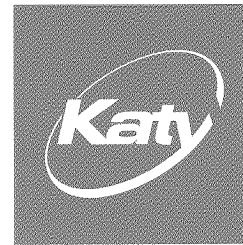
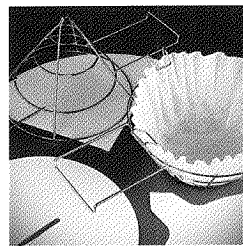
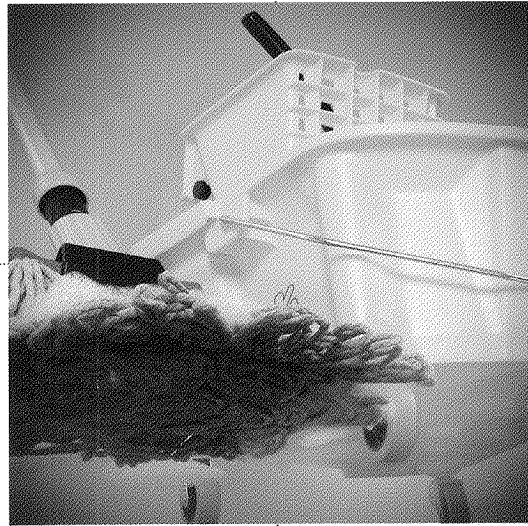
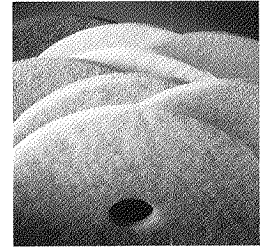
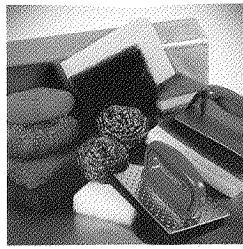




10012870



Recognized as a
trusted provider for
innovative, flexible and
sustainable solutions

KATY INDUSTRIES, INC.

2009 Annual Report

To Our Shareholders

2009 was a challenging year due to the ongoing economic recession, yet we continued to improve our overall business performance. We made significant progress in implementing our key process changes, improved net loss by more than \$10 million and generated positive cash flow from operating activities for the first time since 2006.

As I communicated to you in last year's letter to shareholders, in 2008 we embarked on a plan to change the overall culture at Katy and focus on four core concepts designed to improve customer satisfaction and maximize shareholder value. I am pleased to report that we have made significant progress in each of these areas.

Customer Focus

Despite the economic challenges in the marketplace, our new sales team was able to gain market share in most of our business units in 2009, adding new customers through our focus on innovative, flexible and sustainable solutions. During 2009 we also greatly strengthened our marketing organization and will be rolling out new offerings in 2010, one of which will be our new Earthtone product line. This is an offering of our products that showcases the sustainable/environmentally friendly aspects of both the manufacture and utilization of the cleaning products included in this line.

Niche Market Mindset

We have reintroduced the entrepreneurial attitude within our business units. During 2009 we solidified key customer offerings in new markets and have continued to drive penetration with our channel focus. Our new industrial sales team has not only begun to regain abrasives business but also has improved overall penetration on our maintenance products. We have also landed key customers in non-traditional applications that will help our overall performance in 2010.

Operational Excellence

In April 2009 we announced the hiring of our new VP of Operations who since has facilitated an upgrading of key positions in our sourcing and operations areas. Within sourcing, we now have a direct connection to foreign suppliers that allows us to lower the cost of purchased materials and remain price competitive. Operationally we have instituted a much more rigorous quality process and made selective capital improvements at our Glit facility that has helped reduce costly quality errors and bring overall scrap rates down by 50%. In 2010 we are implementing a Sales and Operations Planning process that will insure that we have the right products to satisfy our customers' needs, thereby improving order fill rates and overall factory efficiency.

Focus on Cash

As I stated in the opening paragraph we generated positive cash flow from operating activities, \$5.1 million, for the first time since 2006. The year over year improvement from 2008 to 2009 was \$10 million. Additionally in 2009, our capital expenditures were \$6 million lower than in 2008. This performance would have been outstanding during any year but with the recent economic environment it was a tremendous effort by the entire Katy team. We will continue to be vigilant about cash usage and expect this positive trend to continue during 2010.

We have made a good deal of progress since I last reported to you but still have significant opportunities to improve the business. We intend to continue our focus on basic business practices and customer satisfaction. The organization is energized and succeeding in a tough environment. Our goal remains to bring Katy Industries back to profitability and deliver shareholder value.

Thank you for your continued support of Katy Industries, Inc.

Respectfully yours,

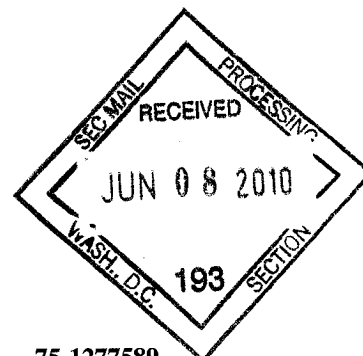


David J. Feldman
President and Chief Executive Officer

United States
Securities and Exchange Commission
Washington, D.C. 20549

FORM 10-K

- Annual Report Pursuant to Section 13 or 15(d)
of the Securities Exchange Act of 1934**
For the fiscal year ended: **December 31, 2009**
OR
 **Transition Report Pursuant to Section 13 or 15(d)
of the Securities Exchange Act of 1934**
Commission file number **1-5558**



Katy Industries, Inc.
(Exact name of registrant as specified in its charter)

Delaware
(State or other jurisdiction of
incorporation or organization)

75-1277589
(I.R.S. Employer
Identification No.)

305 Rock Industrial Park Drive, Bridgeton, Missouri 63044
(Address of principal executive offices) (Zip Code)

Registrant's telephone number, including area code: **(314) 656-4321**

Securities registered pursuant to Section 12(b) of the Act: **None**

Securities registered pursuant to Section 12(g) of the Act:

(Title of class)

Common Stock, \$1.00 par value

Indicate by check mark if the registrant is a well-known seasoned issuer, as defined in Rule 405 of the Securities Act. Yes No

Indicate by check mark if the registrant is not required to file reports pursuant to Section 13 or Section 15(d) of the Act. Yes No

Indicate by check mark whether the registrant: (1) has filed all reports required to be filed by Section 13 or 15(d) of the Securities Exchange Act of 1934 during the preceding 12 months (or for such shorter period that the registrant was required to file such reports), and (2) has been subject to such filing requirements for the past 90 days. Yes No

Indicate by check mark whether the registrant has submitted electronically and posted on its corporate Website, if any, every Interactive Data File required to be submitted and posted pursuant to Rule 405 of Regulation S-T during the preceding 12 months (or for such shorter period that the registrant was required to submit and post such files). Yes No

Indicate by check mark if disclosure of delinquent filers pursuant to Item 405 of Regulation S-K is not contained herein, and will not be contained, to the best of registrant's knowledge, in definitive proxy or information statements incorporated by reference in Part III of this Form 10-K or any amendment to this Form 10-K.

Indicate by check mark whether the registrant is a large accelerated filer, an accelerated filer, a non-accelerated filer, or a smaller reporting company. See the definitions of "large accelerated filer," "accelerated filer" and "smaller reporting company" in Rule 12b-2 of the Exchange Act.

Large accelerated filer

Accelerated filer

Non-accelerated filer (Do not check if a smaller reporting company)

Smaller reporting company

Indicate by check mark whether the registrant is a shell company (as defined in Rule 12b-2 of the Act). Yes No

The aggregate market value of the voting common stock held by non-affiliates of the registrant based upon its closing transaction price on the OTC Bulletin Board on July 3, 2009 was \$6,677,395*.

As of February 26, 2010, 7,951,176 shares of common stock, \$1.00 par value, were outstanding, the only class of the registrant's common stock.

* Calculated by excluding all shares held by executive officers and directors of the registrant without conceding that all such persons are "affiliates" of the registrant for purposes of federal securities laws.

DOCUMENTS INCORPORATED BY REFERENCE

The information required to be furnished pursuant to Part III of this Form 10-K is set forth in, and is hereby incorporated by reference herein from, the registrant's definitive proxy statement for the 2010 annual meeting of stockholders (the "2010 Proxy Statement") to be filed by the registrant with the Securities and Exchange Commission pursuant to Regulation 14A not later than 120 days after the fiscal year ended December 31, 2009. With the exception of the sections of the 2010 Proxy Statement specifically incorporated herein by reference, the 2010 Proxy Statement is not deemed to be filed as part of this Form 10-K.

TABLE OF CONTENTS

PART I		
Item 1.	BUSINESS	1
Item 1A.	RISK FACTORS	4
Item 1B.	UNRESOLVED STAFF COMMENTS	11
Item 2.	PROPERTIES	11
Item 3.	LEGAL PROCEEDINGS	11
Item 4.	(REMOVED AND RESERVED)	11
PART II		
Item 5.	MARKET FOR REGISTRANT’S COMMON EQUITY, RELATED STOCKHOLDER MATTERS AND ISSUER PURCHASES OF EQUITY SECURITIES	12
Item 7.	MANAGEMENT’S DISCUSSION AND ANALYSIS OF FINANCIAL CONDITION AND RESULTS OF OPERATIONS	13
Item 8.	FINANCIAL STATEMENTS AND SUPPLEMENTARY DATA	23
Item 9.	CHANGES IN AND DISAGREEMENTS WITH ACCOUNTANTS ON ACCOUNTING AND FINANCIAL DISCLOSURE	54
Item 9A(T).	CONTROLS AND PROCEDURES	54
Item 9B.	OTHER INFORMATION	54
PART III		
Item 10.	DIRECTORS, EXECUTIVE OFFICERS AND CORPORATE GOVERNANCE	55
Item 11.	EXECUTIVE COMPENSATION	55
Item 12.	SECURITY OWNERSHIP OF CERTAIN BENEFICIAL OWNERS AND MANAGEMENT AND RELATED STOCKHOLDER MATTERS	55
Item 13.	CERTAIN RELATIONSHIPS AND RELATED TRANSACTIONS, AND DIRECTOR INDEPENDENCE	56
Item 14.	PRINCIPAL ACCOUNTING FEES AND SERVICES	56
PART IV		
Item 15.	EXHIBITS, FINANCIAL STATEMENT SCHEDULES	57
SIGNATURES		58
EXHIBITS		60

[This page intentionally left blank.]

PART I

STATEMENT REGARDING FORWARD-LOOKING STATEMENTS

Except for the historical information and current statements contained in this Annual Report on Form 10-K, certain matters discussed herein or incorporated by reference, including, without limitation, "Management's Discussion and Analysis of Financial Condition and Results of Operations", in press releases, written statements or other documents filed with or furnished to the Securities and Exchange Commission ("SEC"), or in our communications or discussions through webcasts, conference calls and other presentations may be deemed to be forward-looking statements within the meaning of the Securities Act of 1933, as amended, and the Securities Exchange Act of 1934, as amended. Forward-looking statements involve risks and uncertainties. Actual results could differ materially from those projected in or contemplated by forward-looking statements due to a number of important factors, including the factors discussed under "Item 1A. Risk Factors" and "Item 7. Management's Discussion and Analysis of Financial Condition and Results of Operations."

Item 1. BUSINESS

Katy Industries, Inc. ("Katy" or the "Company") was organized as a Delaware corporation in 1967. We are a manufacturer, importer and distributor of commercial cleaning and storage products. Our business units operate within a framework of policies and goals aligned under a corporate group. Katy's corporate group is responsible for overall planning, sales management, financial management, human resource management, acquisitions, dispositions, and other related administrative matters.

Operations

Our commercial cleaning products are sold primarily to janitorial/sanitary and foodservice distributors that supply end users such as restaurants, hotels, healthcare facilities and schools. Our storage products are primarily sold through major home improvement and mass market retail outlets. Net sales and operating loss for the Company during 2009 were \$141.2 million and \$6.2 million, respectively. Total assets for the Company were \$66.4 million at December 31, 2009. Continental Commercial Products, LLC ("CCP") was created mainly for the purpose of simplifying our business transactions and improving our customer relationships by allowing customers to order products from various CCP business units on one purchase order. CCP includes as divisions all of our business units. CCP is headquartered in Bridgeton, Missouri near St. Louis and has additional operations in California, Georgia and Canada. Our business units are:

The Continental business unit is a plastics manufacturer and an importer and distributor of products for the commercial janitorial/sanitary maintenance and food service markets. Continental products include commercial waste receptacles, buckets, mop wringers, janitorial carts, and other products designed for commercial cleaning and food service. Continental products are sold under the following brand names: Continental®, Kleen Aire®, Huskee®, SuperKan®, King Kan®, Unibody®, and Tilt-N-Wheel®.

The Contico business unit is a plastics manufacturer and distributor of home storage products, sold primarily through major home improvement and mass market retail outlets. Contico products include plastic home storage units such as domestic storage containers, shelving and hard plastic gun cases and are sold under the brand names Contico® and Tuffbin®. Contico® is a registered trademark used under license from Contico Europe Limited.

The Container business unit is a plastics manufacturer and distributor of industrial storage drums and pails for commercial and industrial use. Products are sold under the Contico® and Contico Container™ brand names.

The Disco business unit is a manufacturer and distributor of filtration, cleaning and specialty products sold to the restaurant/food service industry. Disco products include fryer filters, oil stabilizing powder, grill cleaning implements and other food service items and are sold under the Disco® name as well as BriteSorb®, and the Brillo® line of cleaning products. BriteSorb® is a registered trademark used under license from PQ Corporation, and Brillo® is a registered trademark used under license from Church & Dwight Company.

The Gemtex business unit is a manufacturer and distributor of resin fiber disks and other coated abrasives for the original equipment manufacturer (“OEM”), automotive, industrial, and home improvement markets. The most prominent brand name under which the product is sold is Trim-Kut®.

The Glit business unit is a manufacturer and distributor of non-woven abrasive products for commercial and industrial use and also supplies materials to various OEMs. Glit products include floor maintenance pads, hand pads, scouring pads, specialty abrasives for cleaning and finishing and roof ventilation products. These products are sold primarily in the commercial sanitary maintenance, food service and construction markets under the following brand names: Glit®, Kleenfast®, Glit/Microtron®, Fiber Naturals®, Big Boss II®, Blue Ice®, Brillo®, BAB-O®, Old Dutch® and Twister™. Old Dutch® is a registered trademark used under license from Dial Brands, Inc. and BAB-O® is a registered trademark used under license from Fitzpatrick Bros., Inc. Twister™ is a trademark of HTC Industries, Inc.

The Wilén business unit is an importer and distributor of professional cleaning products that include mops, brooms, brushes, and plastic cleaning accessories. Wilén products are sold primarily through commercial sanitary maintenance and food service markets, with some products sold through consumer retail outlets. Products are sold under the following brand names: Wilén®, Wax-o-matic® and Rototech®.

We have restructured many of our operations in order to maintain what we believe is a low cost structure, which is essential for us to be competitive in the markets we serve. These restructuring efforts include consolidation of facilities, headcount reductions, and evaluation of sourcing strategies to determine the lowest cost method for obtaining finished product. Costs associated with these efforts include expenses for non-cancelable leases at facilities that have been abandoned, severance and other employee termination and exit costs that may be incurred not only with consolidation of facilities, but potentially the complete shut down of certain manufacturing and distribution operations. Additional details regarding severance, restructuring and related charges can be found in Note 16 to the Consolidated Financial Statements included in Part II, Item 8.

See Licenses, Patents and Trademarks below for further discussion regarding the trademarks used by Katy companies.

Markets and Competition

We market a variety of commercial cleaning products and supplies to the commercial janitorial/sanitary maintenance and foodservice markets. Sales and marketing of these products are handled through a combination of direct sales personnel, manufacturers’ sales representatives, and wholesale distributors. The commercial distribution channels for our commercial cleaning products are highly fragmented, resulting in a large number of small customers, mainly distributors of janitorial cleaning products. We also market our products to the construction, packaging and filler market (our pails), and the industrial market (our resin fiber disks). We do not have one single customer that comprises greater than ten percent of consolidated net sales.

The markets for these products are highly competitive. Competition is based primarily on price, the ability to provide superior customer service and on-time product delivery. Other competitive factors include brand recognition, product design, quality and performance of the product. We compete for market share with a number of different competitors depending upon the specific market place. In large part, our competition is unique in each product line. We believe that we have established long standing relationships with our major customers based on quality products and service, and our ability to offer a complete line of products. While each product line is marketed under a different brand name most are sold as complementary products. We also continue to strive to be a low cost producer in all our markets; however, our ability to remain a low cost producer in the industry is highly dependent on the price of our raw materials, primarily resin (see discussion below). Being a low cost producer is also dependent upon our ability to reduce and subsequently control our cost structure, which has benefited from our recent restructuring efforts.

We market branded plastic home storage units to mass merchant retailers in the U.S. and Canada. Sales and marketing of these products are generally handled by direct sales personnel and external representative groups. The consumer distribution channels for these products, especially the in-home products, are highly concentrated, with several large mass merchant retailers representing a very significant portion of the customer base. We compete with a limited number of large companies that offer a broad array of products and many small companies with niche offerings. With few consumer storage products enjoying patent protection, the

primary basis for competition is price. Therefore, efficient manufacturing and distribution capability is critical to success. Ultimately, our ability to remain competitive in these consumer markets is dependent upon our position as a low cost producer. Our ability to become a low cost producer in the industry is highly dependent on the price of our raw materials, primarily thermoplastic resin (see discussion below). Being a low cost producer is also dependent upon our ability to reduce and subsequently control our cost structure, which has benefited from our recent restructuring efforts. Our restructuring efforts have included consolidation of facilities and headcount reductions.

Raw Materials

Our operations did not experience significant difficulties in obtaining raw materials, fuels, parts or supplies for their activities during the year ended December 31, 2009, but no prediction can be made as to possible future supply problems or production disruptions resulting from possible shortages. We are also subject to uncertainties involving labor relations issues at entities involved in our supply chain, both at suppliers and in the transportation and shipping area. Our Continental, Container and Contico business units (and some others to a lesser extent) use polyethylene, polypropylene and other thermoplastic resins as raw materials in a substantial portion of their plastic products. After substantial increases through the first ten months of 2008, prices of plastic resins fell dramatically at the end of 2008 as world demand fell and suppliers sold off excess inventories. Prices increased somewhat in the first quarter of 2009, followed by moderate price increases for polyethylene and substantial price increases for polypropylene during the balance of 2009. The higher polypropylene costs were due to high export demand, low inventories at the producer level, and low production of propylene monomer, which is the primary raw material in the production of polypropylene. Prices of both polyethylene and polypropylene have continued to rise during the first quarter of 2010. We have not employed an active hedging program related to our commodity price risk, but have employed other strategies for managing this risk, including contracting for a certain percentage of resin needs through supply agreements and opportunistic spot purchases. We were able to reduce the impact of some of these increases through supply contracts, opportunistic buying, vendor negotiations and other measures. In addition, some price increases were implemented when possible; however, in a climate of rising raw material costs (especially in the last three years), we experience difficulty in raising prices to shift these higher costs to our consumer customers for our plastic products. We cannot predict the direction our raw material prices will take during 2010 and beyond.

Employees

As of December 31, 2009, we employed 639 people, of which 175 were members of various labor unions. Our labor relations are generally satisfactory and there have been no strikes in recent years. In January 2010, one of our union contracts covering 37 employees expired. We are still in negotiations with the union regarding the contract renewal; however, the contract has been mutually extended during this process. Our only other union contract, covering 138 employees, will expire in December 2010.

Regulatory and Environmental Matters

Our operations are subject to various laws and regulations relating to workplace safety and the environment. Compliance with laws regulating the discharge of materials into the environment or otherwise relating to the protection of the environment has historically had a material effect on our capital expenditures and earnings. See Note 15 to the Consolidated Financial Statements in Part II, Item 8.

Licenses, Patents and Trademarks

The success of our products historically has not depended largely on patent, trademark and license protection, but rather on the quality of our products, proprietary technology, contract performance, customer service and the technical competence and innovative ability of our personnel to develop and introduce products. However, we do rely to a certain extent on patent protection, trademarks and licensing arrangements in the marketing of certain products. Examples of key licensed and protected trademarks include Contico®; Continental®; Glit®, Microtron®, Brillo®, and Kleenfast® (Glit); Wilen®; and Trim-Kut® (Gemtex).

Discontinued Operations

Over the past several years, we identified and sold certain business units that we considered non-core to the future operations of the Company. In 2007 we sold the Electrical Products Group, which was comprised of the Woods Industries, Inc. (“Woods US”) and Woods Industries (Canada), Inc. (“Woods Canada”) business units. The Electrical Products Group’s principal business was the design and distribution of consumer electrical corded products, which were sold principally to national home improvement and mass merchant retailers in the United States and Canada. The Electrical Products Group was sold for gross proceeds of approximately \$50.7 million, including amounts placed into escrow of \$7.7 million related to the filing and receipt of a foreign tax certificate and the sale of specific inventory. During fiscal 2007 we recognized a gain on sale of discontinued businesses of \$1.3 million in connection with this sale. The gain in fiscal 2007 did not include \$0.9 million of the \$7.7 million in escrow as further steps were required to realize those funds. During the year ended December 31, 2008 we received \$7.7 million from escrow upon the receipt of the foreign tax certificate and sale of specific inventory. As a result, we recognized an additional \$0.9 million of gain on sale of discontinued businesses representing the amount in escrow not recognized at the time of sale. Also during the year ended December 31, 2008 we received and recognized \$0.8 million for the final working capital adjustment. As of December 31, 2009 there were no amounts remaining in escrow.

In 2007 we sold the Contico Manufacturing, Ltd. (“CML”) business unit, a distributor of a wide range of cleaning equipment, storage solutions and washroom dispensers for the commercial and sanitary maintenance and food service markets primarily in the U.K., for gross proceeds of approximately \$10.6 million, including a receivable of \$0.6 million associated with final working capital levels. We recorded a gain of \$0.1 million during 2008 in connection with the ultimate collection of the receivable.

In 2006 we sold certain assets of the Metal Truck Box business unit, a manufacturer and distributor of aluminum and steel automotive storage products located in Winters, Texas, for gross proceeds of approximately \$3.6 million, including a note receivable of \$1.2 million. The note receivable is included in Other Assets on the Consolidated Balance Sheets.

Available Information

We file annual, quarterly, and current reports, proxy statements, and other documents with the Securities and Exchange Commission (the “SEC”) under the Securities Exchange Act of 1934, as amended (the “Exchange Act”). The public may read and copy any materials that the Company files with the SEC at the SEC’s Public Reference Room at 100 F Street, NE, Washington, D.C. 20549. The public may obtain information on the operation of the Public Reference Room by calling the SEC at (800) SEC-0330. Also, the SEC maintains an Internet website that contains reports, proxy and information statements, and other information regarding issuers, including Katy, that file electronically with the SEC. The public can obtain documents that we file with the SEC at <http://www.sec.gov>.

We maintain a website at <http://www.katyindustries.com>. We make available, free of charge through our website, our annual reports on Form 10-K, quarterly reports on Form 10-Q, current reports on Form 8-K, and, if applicable, all amendments to these reports as well as Section 16 reports on Forms 3, 4 and 5, as soon as reasonably practicable after such reports are filed with or furnished to the SEC. The information on our website is not, and shall not be deemed to be, a part of this report or incorporated into any other filings we make with the SEC.

Item 1A. RISK FACTORS

In addition to other information and risk disclosures contained in this report, we encourage you to consider the risk factors discussed below in evaluating our business. We work to manage and mitigate risks proactively. Nevertheless, the following risk factors, some of which may be beyond our control, could materially impact our results of operations or cause future results to materially differ from current expectations. Please also see “Forward-Looking Statements” in Item 7.

We may not be able to refinance, extend or repay our indebtedness, which could have a material adverse affect on our business, financial condition, results of operations and common stock price.

As of December 31, 2009, we had \$15.8 million of indebtedness outstanding under our Bank of America Credit Agreement, which will mature on November 30, 2010. The Bank of America Credit Agreement is an asset-based lending agreement. We will need to refinance a significant portion of this indebtedness. There can be no assurance that we will be able to refinance or extend this debt on commercially reasonable terms or at all. During the third quarter of 2008, the global credit markets suffered a significant contraction, including the failure of some large financial institutions. This resulted in a significant disruption in the credit markets and the overall availability of credit. Market disruptions, such as those experienced in 2008 and 2009, may increase the cost of borrowing or adversely affect our ability to refinance debt obligations as they become due. If we are unable to refinance our indebtedness, or if short-term or long-term borrowing costs dramatically increase, our ability to finance current operations and meet our short-term and long-term obligations could be adversely affected.

The ongoing downturn in the general economy and the real estate market has negatively impacted the appraised value of certain of our assets and could negatively impact our ability to refinance our outstanding indebtedness.

The Bank of America Credit Agreement is an asset-based lending agreement. The Company expects that the refinance of this agreement, which matures on November 30, 2010, will be through an asset-based lending agreement. Our access to credit is therefore partially based on the appraised value of our assets. In 2010, independent appraisals indicated that the market value of certain of our assets had declined as a result of the economic downturn and the declining real estate market in the United States. Any further declines in the appraised values of our assets could impact our ability to obtain the financing necessary to operate our business and to refinance our outstanding indebtedness as it becomes due.

Our stock price has been, and likely will continue to be, volatile.

The market price of our common stock has experienced fluctuations and is likely to fluctuate significantly in the future. Our stock price may fluctuate for a number of reasons, including:

- announcements concerning us or our competitors;
- quarterly variations in operating results;
- introduction or abandonment of new technologies or products;
- divestiture or acquisition of business groups or units;
- limited trading in our stock;
- changes in product pricing policies;
- changes in governmental regulations affecting us; and
- changes in earnings estimates by analysts or changes in accounting policies.

These potential factors, as well as general economic, political and market conditions, such as armed hostilities, acts of terrorism, civil disturbances, recessions, international currency fluctuations, or tariffs and other trade barriers, may materially and adversely affect the market price of our common stock. In addition, stock markets have experienced significant price and volume volatility in the past. This volatility has had a substantial effect on the market prices of securities of many public companies for reasons frequently unrelated or disproportionate to the operating performance of the specific companies. If these broad market fluctuations continue, they may adversely affect the market price of our common stock.

Our common stock is quoted on the OTC Bulletin Board, which may have an unfavorable impact on our stock price and liquidity.

Our common stock is quoted on the OTC Bulletin Board under the ticker symbol "KATY." The OTC Bulletin Board is an inter-dealer, over-the-counter market that provides significantly less liquidity than the New York Stock Exchange. Quotes for stocks included on the OTC Bulletin Board are not listed in the financial sections of newspapers as are those for the New York Stock Exchange. Therefore, prices for securities traded solely on the OTC Bulletin Board may be difficult to obtain and holders of our common stock may be unable

to resell their securities at or near their original offering price or at any price. The quotation of our shares on the OTC Bulletin Board may result in a less liquid market available for existing and potential stockholders to trade shares of our common stock, could depress the trading price of our common stock and could have a long-term adverse impact on our ability to raise capital in the future.

We are dependent upon a continuous supply of raw materials from third party suppliers and would be harmed by a significant, prolonged disruption in supply.

Our reliance on suppliers and commodity markets to secure thermoplastic resins and other raw materials used in our products exposes us to volatility in the availability of raw materials. In some instances, we depend upon a single source of supply or participate in commodity markets that may be subject to allocations by suppliers. There is no assurance that we could obtain the required raw materials from other sources on as favorable terms. As a result, any significant delay in or disruption of the supply of our raw materials or commodities could have an adverse affect on our ability to meet our commitments to our customers, substantially increase our cost of materials, require product reformulation or require qualification of new suppliers, any of which could materially adversely affect our business, results of operations or financial condition. We believe that our supply management practices are based on an appropriate balancing of the foreseeable risks and the costs of alternative practices and, although we do not anticipate any loss of our supply sources, the unavailability of some raw materials, should it occur, may have an adverse effect on our results of operations and financial condition.

Price increases in raw materials could adversely affect our operating results and financial condition.

The prices for certain raw materials used in our operations, specifically thermoplastic resin, have demonstrated volatility over the past few years. The volatility of resin prices is expected to continue and may be affected by numerous factors beyond our control, including domestic and international economic conditions, labor costs, the price and production levels of oil, competition, import duties and tariffs and currency exchange rates. We attempt to reduce our exposure to increases in those costs through a variety of programs, including opportunistic buying of product in the spot market, entering into contracts with suppliers, and seeking substitute materials. However, there can be no assurance that we will be able to offset increased raw material costs through price increases and there may be a delay from quarter to quarter between the timing of raw material cost increases and price increases on our products. If we are unable to offset increased raw material costs, our production costs may increase and our margins may decrease, which may have a material adverse effect on our results of operations.

Fluctuations in the price, quality and availability of certain portions of our finished goods due to greater reliance on third party suppliers could negatively impact our results of operations.

Because we are dependent on third party suppliers for a certain portion of our finished goods, we must obtain sufficient quantities of quality finished goods from our suppliers at acceptable prices and in a timely manner. We have no long-term supply contracts with our key suppliers and our ability to maintain close, mutually beneficial relationships with our third party suppliers is important to the ongoing profitability of our business. Unfavorable fluctuations in the price, quality and availability of these finished goods products could negatively impact our ability to meet the demands of our customers and could result in a decrease in our sales and earnings.

Our inability to realize the benefits of our recent facility consolidations and restructuring plans or any future acquisition integration plans could adversely affect our business and results of operations.

During the past several years, we have consolidated several of our manufacturing, distribution and office facilities. The success of these consolidations and any future acquisitions will depend on our ability to integrate assets and personnel, apply our internal control processes to these businesses, and cooperate with our strategic partners. We may encounter difficulties in integrating business units acquired in the future with our operations and in managing strategic investments. Furthermore, we may not realize the degree or timing of benefits we anticipate when we first entered into these organizational changes. Any of the foregoing could adversely affect our business and results of operations.

Our inability to implement our strategy of continuously improving our productivity and streamlining our operations could have an adverse effect on our financial condition and results of operations.

During the past several years, we have restructured many of our operations in order to maintain a low cost structure, which is essential for us to be competitive in the markets we serve. We must continuously improve our manufacturing efficiencies by the use of Lean Manufacturing and other methods in order to reduce our overhead structure. In addition, in the future we will need to develop additional efficiencies within the sourcing/purchasing and administration areas of our operations. The plans and programs we may implement in the future for the purpose of improving efficiencies may not be completed substantially as planned, may be more costly to implement than expected and may not have the positive profit-enhancing impact anticipated. In the event we are unable to continue to improve our productivity and streamline our operations, our financial condition and results of operations may be harmed. In addition, over the past three years we identified and sold certain business assets that we considered non-core to our future operations for the purpose of improving our financial condition. There is no assurance that the sale of the assets will lead to increased profitability and our strategy of divestiture of non-core assets may not be successful in the long-term.

An increase in interest rates may negatively impact our operating results.

As of December 31, 2009 all of our outstanding debt was subject to variable interest rates. An increase in interest rates may have a material adverse effect on our financial condition and results of operations.

The cost of servicing our debt on which we are required to make interest and principal payments may adversely affect our liquidity and financial condition, limit our ability to grow and compete, and prevent us from fulfilling our obligations under our indebtedness.

As of December 31, 2009, we had \$15.8 million of debt outstanding. Subject to limits contained in the agreements governing our outstanding debt, we may incur additional debt in the future. Our indebtedness places significant demands on our cash resources, which may:

- make it more difficult for us to satisfy our outstanding debt obligations;
- require us to dedicate a substantial portion or even all of our cash flow from operations to payments on our debt, thereby reducing the amount of our cash flow available for working capital, capital expenditures, acquisitions, and other general corporate purposes;
- increase the amount of interest expense that we will have to pay because our borrowings are at variable rates of interest, which, if increased, will result in higher interest payments;
- limit our flexibility in planning for, or reacting to, changes in our business and the industries in which we compete;
- place us at a competitive disadvantage compared to our competitors, some of which have lower debt service obligations and greater financial resources than we do;
- limit our ability to borrow additional funds; and
- increase our vulnerability to existing and future adverse economic and industry conditions.

Our ability to make scheduled payments of principal or interest on our debt, or to refinance such debt, will depend upon our future operating performance, which is subject to general economic and competitive conditions and to financial, business and other factors, many of which we cannot control. There can be no assurance that our business will continue to generate sufficient cash flow from operations in the future to service our debt or meet our other cash needs. Should we fail to generate sufficient cash flows from operations to service our debt, we may be required to refinance all or a portion of our existing debt, sell assets at inopportune times or obtain additional financing to meet our debt obligations and other cash needs. We cannot assure you that any such refinancing, sale of assets or additional financing would be possible on terms and conditions, including but not limited to the interest rate, which we would find acceptable.

We are obligated to comply with financial and other covenants in our debt agreements that could restrict our operating activities, and the failure to comply with such covenants could result in defaults that accelerate the payment under our debt.

The agreements relating to our outstanding debt, including our Second Amended and Restated Loan Agreement with Bank of America, N.A. (the “Bank of America Credit Agreement”), contain a number of restrictive covenants that limit our ability to, among other things:

- incur additional debt;
- make certain distributions, investments and other restricted payments;
- limit the ability of restricted subsidiaries to make payments to us;
- enter into transactions with affiliates;
- create certain liens;
- sell assets and if sold, use the proceeds at management’s discretion; and
- consolidate, merge or sell all or substantially all of our assets.

Our secured debt also contains other customary covenants, including, among others, provisions relating to the maintenance of the property securing the debt and restricting our ability to pledge assets or create other liens. In addition, our credit facility requires us to maintain at least \$5.0 million in borrowing availability which represents our eligible collateral base less outstanding borrowings and letters of credit. The borrowing availability requirement contained in our credit facility may restrict our operations and our ability to fund capital expenditures, operations and business opportunities in a normal manner. See “Management’s Discussion and Analysis of Financial Condition and Results of Operations — Bank of America Credit Agreement” for further discussion.

The failure to comply with the covenants contained in our debt agreements could subject us to default remedies, including the acceleration of all or a substantial portion of our existing indebtedness. As of December 31, 2009, we were in compliance with all such covenants. If we were to breach any of our debt covenants and did not cure the breach within any applicable cure period, our lender could require us to repay the debt immediately, and, if the debt is secured, could immediately begin proceedings to take possession of the property securing the loan. Our debt arrangements contain cross-default provisions, which means that the lender under those debt arrangements can place us in default and require immediate repayment of its debt if we breach and fail to cure a covenant under certain of our other debt obligations. As a result, any default under our debt covenants could have an adverse effect on our financial condition, our results of operations, our ability to meet our obligations and the market value of our shares.

If we are unable to comply with the terms of our debt agreements, we could seek to obtain an amendment to such debt agreements and pursue increased liquidity through additional debt financing and/or the sale of assets. It is possible, however, we may not be able to obtain further amendments from the lender or secure additional debt financing or liquidity through the sale of assets on favorable terms or at all.

Work stoppages or other labor issues at our facilities or those of our suppliers could adversely affect our operations.

At December 31, 2009, we employed 639 persons in our various businesses, of which approximately 27% were subject to collective bargaining or similar arrangements. As a result, we are subject to the risk of work stoppages and other labor-relations matters. These collective bargaining agreements expire at various times. In January 2010, one of our union contracts covering 37 employees expired. We are still in negotiations with the union regarding the contract renewal; however, the contract has been mutually extended during this process. Our only other union contract, covering 138 employees, will expire in December 2010.

If our union employees were to engage in a strike, work stoppage or other slowdown, we could experience a significant disruption of our operations or higher ongoing labor costs. We believe our relationships with our union employees are good, but these relationships could deteriorate. Any failure by us to reach a new agreement upon expiration of such union contracts may have a material adverse effect on our business, results of operations, or financial condition. We are also subject to labor relations issues at entities involved in our supply chain, including both suppliers and those entities involved in transportation and

shipping. If any of our suppliers experience a material work stoppage, that supplier may interrupt supply of our necessary production components. This could cause a delay or reduction in our production facilities relating to these products, which could have a material adverse effect on our business, results of operations, or financial condition.

We may not be able to protect our intellectual property rights adequately or assure that third parties will not claim proprietary rights infringement by us in the future.

Part of our success depends upon our ability to use and protect proprietary technology and other intellectual property, which generally covers various aspects in the design and manufacture of our products and processes. We own and use tradenames and trademarks worldwide. We rely upon a combination of trade secrets, confidentiality policies, nondisclosure and other contractual arrangements and patent, copyright and trademark laws to protect our intellectual property rights. The steps we take in this regard may not be adequate to prevent or deter challenges, reverse engineering or infringement or other violation of our intellectual property, and we may not be able to detect unauthorized use or take appropriate and timely steps to enforce our intellectual property rights to the same extent as the laws of the United States.

We are not aware of any assertions that our trademarks or tradenames infringe upon the proprietary rights of third parties, but we cannot assure that third parties will not claim infringement by us in the future. Any such claim, whether or not it has merit, could be time-consuming, result in costly litigation, cause delays in introducing new products in the future or require us to enter into royalty or licensing agreements. As a result, any such claim could have a material adverse effect on our business, results of operations and financial condition.

Disruption of our information technology and communications systems or our failure to adequately maintain our information technology and communications systems could have a material adverse effect on our business and operations.

We extensively utilize computer and communications systems to operate our business and manage our internal operations including demand and supply planning and inventory control. Any interruption of this service from power loss, a telecommunications failure, the failure of our computer systems or a computer virus or other interruption caused by weather, natural disasters or any similar event could disrupt our operations and result in lost sales.

We rely on our management information systems to operate our business and to track our operating results. Our management information systems will require modification and refinement as we grow and our business needs change. If we experience a significant system failure or if we are unable to modify our management information systems to respond to changes in our business needs, our ability to properly manage our business could be adversely affected.

Our future performance is influenced by our ability to remain competitive.

As discussed in “Business — Competition,” we operate in markets that are highly competitive and face substantial competition from numerous competitors in each of our product lines. Our competitive position in the markets in which we participate is, in part, subject to external factors. For example, supply and demand for certain of our products is driven by end-use markets and worldwide capacities which, in turn, impact demand for and pricing of our products. Many of our direct competitors are part of large multi-national companies and may have more resources than we do. Any increase in competition may result in lost market share or reduced prices, which could result in reduced gross profit margins. This may impair our ability to grow or even to maintain current levels of sales and earnings. If we are not as cost efficient as our competitors, or if our competitors are otherwise able to offer lower prices, we may lose customers or be forced to reduce prices, which could negatively impact our financial results.

Failure to maintain effective internal control over financial reporting could have a material adverse effect on our business, results of operations, financial condition and stock price.

Pursuant to the Sarbanes-Oxley Act of 2002, we are required to provide a report by management on internal control over financial reporting, including management’s assessment of the effectiveness of such control. Changes to our business will necessitate ongoing changes to our internal control systems and

processes. Internal control over financial reporting may not prevent or detect misstatements because of its inherent limitations, including the possibility of human error, the circumvention or overriding of controls, or fraud. Therefore, even effective internal controls can provide only reasonable assurance with respect to the preparation and fair presentation of financial statements. In addition, projections of any evaluation of effectiveness of internal control over financial reporting to future periods are subject to the risk that the control may become inadequate because of changes in conditions, or that the degree of compliance with the policies or procedures may deteriorate. If we fail to maintain the adequacy of our internal controls, including any failure to implement required new or improved controls, or if we experience difficulties in their implementation, our business, results of operations and financial condition could be materially adversely harmed, we could fail to meet our reporting obligations and there could be a material adverse effect on our stock price.

Changes in laws and government regulations affecting environmental compliance and income taxes could adversely affect our business and results of operations.

We are subject to many environmental and safety regulations with respect to our operating facilities. Most of our facilities are subject to extensive laws, regulations, rules and ordinances relating to the protection of the environment, including those governing the discharge of pollutants into the air and water and the generation, management and disposal of hazardous substances and wastes or other materials. We may incur substantial costs, including fines, damages and criminal penalties or civil sanctions, or experience interruptions in our operations for actual or alleged violations or compliance requirements arising under environmental laws. Our operations could result in violations under environmental laws, including spills or other releases of hazardous substances to the environment. Given the nature of our business, violations of environmental laws may result in restrictions imposed on our operating activities or substantial fines, penalties, damages or other costs, including costs as a result of private litigation. In addition, we may incur significant expenditures to comply with existing or future environmental laws. Costs relating to environmental matters will be subject to evolving regulatory requirements and will depend on the timing of promulgation and enforcement of specific standards that impose requirements on our operations. Costs beyond those currently anticipated may be required under existing and future environmental laws.

At any point in time, a number of our tax years are subject to audit by various taxing jurisdictions. The results of these audits and negotiations with tax authorities may affect tax positions taken. Additionally, our effective tax rate in a given financial statement period may be materially impacted by changes in the geographic mix or level of earnings.

We are subject to litigation that could adversely affect our operating results.

From time to time we may be a party to lawsuits and regulatory actions relating to our business. Due to the inherent uncertainties of litigation and regulatory proceedings, we cannot accurately predict the ultimate outcome of any such proceedings. An unfavorable outcome could have a material adverse impact on our business, financial condition and results of operations. In addition, regardless of the outcome of any litigation or regulatory proceedings, such proceedings could result in substantial costs and may require that we devote substantial resources to our defense. Further, changes in government regulations both in the United States and Canada could have adverse effects on our business and subject us to additional regulatory actions. We are currently a party to various lawsuits. See Item 3, “Legal Proceedings.”

We are primarily self-insured with respect to health insurance and workers’ compensation. If our reserves for health insurance and workers’ compensation claims and other expenses are inadequate, we may incur additional charges if the actual costs of these claims exceed the amounts estimated.

Because of high deductibles on our casualty and health insurance policies, we are effectively self-insured with respect to these coverages. Employee health claims are self-insured except to the extent of stop-loss coverage on large claims. In our financial statements, we maintain a reserve for health insurance and workers’ compensation claims using actuarial estimates from third-party consultants and historical data for payment patterns, cost trends and other relevant factors. We evaluate the accrual rates for our reserves regularly throughout the year and we have in the past made adjustments as needed. Due to the uncertainties inherent in the actuarial process, the amount reserved may differ from actual claim amounts and we may be required to further adjust our reserves in the future to reflect the actual cost of claims and related expenses. If the actual

cost of such claims and related expenses exceeds the amounts estimated, we may be required to record additional charges for these claims and/or additional reserves may be required.

Management turnover could cause our business, results of operations and financial condition to suffer.

Our continued success in our business is based upon many factors, including but not limited to, the expansion of our customer base, the enhancement of the products we offer existing customers, aggressive sales and marketing efforts, effective cost containment and capital investment measures, and a strong strategic vision. Achievement of this success will require effective management both in headquarters and in business unit operations. During fiscal 2008 and 2009, we had a high level of turnover in our management positions. Any inability to effectively manage our existing business and our future growth may harm our business, results of operations, and financial condition.

Item 1B. UNRESOLVED STAFF COMMENTS

Not applicable.

Item 2. PROPERTIES

As of December 31, 2009, our total building floor area owned or leased was 1,654,000 square feet, of which 185,000 square feet were owned and 1,469,000 square feet were leased. The following table shows a summary by location of our principal facilities including the nature of the facility and the related business unit.

<u>Location</u>	<u>Facility</u>	<u>Business Unit</u>
UNITED STATES		
California		
Norwalk	Office, Manufacturing, Distribution	Continental, Contico, Container
Chino	Distribution	Continental, Contico, Glit, Wilen, Disco
Georgia		
Atlanta	Office, Manufacturing, Distribution	Wilen
McDonough	Office, Manufacturing, Distribution	Glit, Wilen, Disco
Wrens*	Office, Manufacturing, Distribution	Glit
Missouri		
Bridgeton	Office, Manufacturing, Distribution	Continental, Contico, Corporate
Hazelwood	Manufacturing	Contico
CANADA		
Ontario		
Toronto	Office, Manufacturing, Distribution	Gemtex

* Office/manufacturing facility is owned.

We believe that our current facilities have been adequately maintained, generally are in good condition, and are suitable and adequate to meet our needs in our existing markets for the foreseeable future.

Item 3. LEGAL PROCEEDINGS

Information regarding legal proceedings is included in Note 15 to the Consolidated Financial Statements in Part II, Item 8 and is incorporated by reference herein.

Item 4. (REMOVED AND RESERVED)

PART II

Item 5. MARKET FOR REGISTRANT'S COMMON EQUITY, RELATED STOCKHOLDER MATTERS AND ISSUER PURCHASES OF EQUITY SECURITIES

Our common stock is traded on the OTC Bulletin Board system ("OTCBB") under the symbol "KATY." The following table sets forth high and low sales prices for the common stock as reported on the OTCBB. Reported prices from the OTCBB reflect inter-dealer prices, without retail mark-up, mark-down or commission and thus may not necessarily represent actual transactions.

<u>Period</u>	<u>High</u>	<u>Low</u>
2008		
First Quarter	\$2.20	\$0.85
Second Quarter	1.95	0.85
Third Quarter	1.75	0.80
Fourth Quarter	1.44	0.70
2009		
First Quarter	\$1.25	\$0.29
Second Quarter	1.38	0.35
Third Quarter	1.75	0.84
Fourth Quarter	1.80	1.05

As of February 26, 2010, there were 534 holders of record of our common stock, in addition to approximately 600 holders in street name, and there were 7,951,176 shares of common stock outstanding.

Dividend Policy

Dividends are paid at the discretion of our Board of Directors. The Board of Directors suspended quarterly dividends on March 30, 2001 in order to preserve cash for operations, and the Company has not declared or paid any cash dividends on its common stock since that time. In addition, the Bank of America Credit Agreement prohibits the Company from paying dividends on its securities, other than dividends paid solely in securities. The Company currently intends to retain its future earnings, if any, to fund the development and growth of its business and, therefore, does not anticipate paying any dividends, either in cash or securities, in the foreseeable future. Any future decision concerning the payment of dividends on the Company's common stock will be subject to its obligations under the Bank of America Credit Agreement and will depend upon the results of operations, financial condition and capital expenditure plans of the Company, as well as such other factors as the Board of Directors, in its sole discretion, may consider relevant. For a discussion of our Bank of America Credit Agreement, see "Management's Discussion and Analysis of Financial Condition and Results of Operations".

Equity Compensation Plan Information

Information regarding securities authorized for issuance under the Company's equity compensation plans as of December 31, 2009 is set forth in Item 12, "Security Ownership of Certain Beneficial Owners and Management and Related Stockholder Matters."

Item 7. MANAGEMENT'S DISCUSSION AND ANALYSIS OF FINANCIAL CONDITION AND RESULTS OF OPERATIONS

Forward-Looking Statements

This report and the information incorporated by reference in this report contain various "forward-looking statements" as defined in Section 27A of the Securities Act of 1933 and Section 21E of the Exchange Act of 1934, as amended. The forward-looking statements are based on the beliefs of our management, as well as assumptions made by, and information currently available to, our management. We have based these forward-looking statements on current expectations and projections about future events and trends affecting the financial condition of our business. Additional information concerning these and other risks and uncertainties is included in Item 1A under the caption "Risk Factors." Words and phrases such as "expects," "estimates," "will," "intends," "plans," "believes," "should," "anticipates," and the like are intended to identify forward-looking statements. The results referred to in forward-looking statements may differ materially from actual results because they involve estimates, assumptions and uncertainties. Forward-looking statements included herein are as of the date hereof and we undertake no obligation to revise or update such statements to reflect events or circumstances after the date hereof or to reflect the occurrence of unanticipated events. All forward-looking statements should be viewed with caution. These forward-looking statements are subject to risks and uncertainties that may lead to results that differ materially from those expressed in any forward-looking statement made by us or on our behalf, including, among other things:

- Increases in the cost of, or in some cases continuation of, the current price levels of thermoplastic resins, paper board packaging, and other raw materials.*
- Our inability to reduce product costs, including manufacturing, sourcing, freight, and other product costs.*
- Our inability to protect our intellectual property rights adequately.*
- Our inability to reduce our raw materials costs.*
- Our inability to expand our customer base and increase corresponding revenues.*
- Our inability to achieve product price increases, especially as they relate to potentially higher raw material costs.*
- Unfavorable economic or business conditions, as well as our exposure to the credit risks of our customers and distributors, which may reduce our sales or make it difficult to collect accounts receivable.*
- Competition from foreign and domestic competitors.*
- The potential impact of rising interest rates on our debt outstanding under the Bank of America Credit Agreement.*
- Our inability to meet covenants associated with the Bank of America Credit Agreement.*
- Our inability to access funds under our current loan agreements or refinance our loan agreements given the current instability in the credit markets.*
- Our failure to identify, and promptly and effectively remediate, any material weaknesses or significant deficiencies in our internal controls over financial reporting.*
- The potential impact of rising costs for insurance for properties and various forms of liabilities.*
- The potential impact of changes in foreign currency exchange rates related to our Canadian operations.*
- Labor issues, including union activities that require an increase in production costs or lead to a strike, thus impairing production and decreasing sales, and labor relations issues at entities involved in our supply chain, including both suppliers and those involved in transportation and shipping.*
- Changes in significant laws and government regulations affecting environmental compliance and income taxes.*

OVERVIEW

We are a manufacturer, importer and distributor of commercial cleaning and storage products. Our commercial cleaning products are sold primarily to janitorial/sanitary and foodservice distributors that supply end users such as restaurants, hotels, healthcare facilities and schools. Our storage products are primarily sold through major home improvement and mass market retail outlets.

For purposes of this discussion and analysis section, reference is made to the table below and our Consolidated Financial Statements included in Part II, Item 8.

Over the past few years, our management has been focused on a number of restructuring and cost reduction initiatives, including the consolidation of facilities, divestiture of non-core operations, selling, general and administrative cost rationalization and organizational changes. We have and expect to continue to benefit from various profit enhancing strategies such as process improvements, value engineering products and improved sourcing/purchasing.

End-user demand for our products has historically been stable and recurring. Due to the current economic environment, the need for our products has been reduced along with the reduction in overall economic activity. Since our janitorial/sanitary products are used for cleaning buildings and office space as well as general cleaning, as vacancies increase the demand for our products will be reduced. As all customers have been impacted through the reduction of available credit lines, our distributors/wholesale retailers have reduced their overall investment in inventories. Both of these occurrences have caused a shrinkage of available business.

Our core cleaning product sales tend to move in tandem with the rate of growth in U.S. gross domestic product ("GDP"). As more industries emphasize both sanitary standards and environmentally friendly solutions, we expect our revenues to benefit. Demand for consumer plastic storage products is closely linked to "value" items and the ability to pass on raw material increases has been a significant challenge. End-users are sensitive to the price/value relationship more than brand-name and are seeking alternative solutions when the price/value relationship does not meet their expectations.

Key elements in achieving profitability include 1) improving a low cost structure, from a production, distribution and administrative standpoint, 2) providing outstanding customer service and 3) containing raw material costs (especially plastic resins) or raising prices to shift these higher costs to our customers for our plastic products. In addition to continually striving to reduce our cost structure, we are seeking to offset pricing challenges by developing new products, as new products or beneficial modifications of existing products increase demand from our customers, provide novelty to the consumer, and offer an opportunity for favorable pricing from customers. Retention of customers, or more specifically, product lines with those customers, is also very important in the mass merchant retail area, given the size of these national accounts.

Years Ended December 31,

	2009		2008	
	(Amounts in Millions, except per share data and percentages)			
	\$	% to Sales	\$	% to Sales
Net sales	\$141.2	100.0	\$167.8	100.0
Cost of goods sold	121.2	85.8	155.7	92.8
Gross profit	20.0	14.2	12.1	7.2
Selling, general and administrative expenses	25.9	18.3	29.0	17.2
Impairment of long-lived assets	0.1	0.1	—	—
Severance, restructuring and related charges	0.1	0.1	(0.4)	(0.2)
Loss on sale or disposal of assets	0.1	0.1	1.0	0.6
Operating loss	(6.2)	(4.4)	(17.5)	(10.4)
Interest expense	(1.1)		(1.7)	
Other, net	0.7		0.5	
Loss from continuing operations before income tax benefit (provision)	(6.6)		(18.7)	
Income tax benefit (provision) from continuing operations	0.5		(0.1)	
Loss from continuing operations	(6.1)		(18.8)	
Income from operations of discontinued businesses (net of tax)	—		0.6	
Gain on sale of discontinued businesses (net of tax)	—		1.7	
Net loss	\$ (6.1)		\$ (16.5)	
Loss per share of common stock – Basic and diluted				
Loss from continuing operations	\$ (0.77)		\$ (2.36)	
Discontinued operations	—		0.29	
Net loss	\$ (0.77)		\$ (2.07)	

RESULTS OF OPERATIONS — 2009 COMPARED TO 2008

Net sales decreased 15.9% from \$167.8 million during the year ended December 31, 2008 to \$141.2 million during the year ended December 31, 2009. Overall, this decline resulted from lower volumes across almost all of our business units driven by market softness, as well as our decision to exit certain unprofitable business lines. Gross margin was 14.2% for the year ended December 31, 2009, an increase of 7.0 percentage points from the prior year. The increase in gross margin resulted from improved factory productivity and cost controls as well as a favorable year over year variance in our LIFO adjustment of \$1.1 million resulting from a decrease in resin costs and lower inventory levels.

Selling, general & administrative (“SG&A”) expenses decreased 10.5% from the year ended December 31, 2008 to \$25.9 million for the year ended December 31, 2009 due to the following variances:

- \$0.9 million decrease associated with the transition and hiring of our CEO and forfeiture of stock options by our former CEO in 2008, offset by a \$1.3 million increase associated with the transition and hiring of executive level personnel other than our CEO (\$0.7 million in 2008 and \$2.0 million in 2009);
- \$0.7 million decrease in consulting and professional fees;
- \$0.6 million decrease in commissions as related sales are down;
- \$0.6 million decrease in promotional expenses (catalogs, samples, etc.) and product development;

- \$0.5 million decrease from accelerated depreciation expense on abandoned leasehold improvements in 2008;
- \$0.3 million reduction in costs related to our plan to deregister our common stock under the Securities and Exchange Act of 1934, as amended, which was subsequently abandoned; and
- \$1.2 million decrease in salaries and related incentive accruals, adjustments to self-insurance and environmental liability accruals and bad debt expense, partially offset by a \$0.5 million increase in stock-based compensation and franchise tax expense.

See Note 4 to the Consolidated Financial Statements in Part II, Item 8 for discussion on impairment of long-lived assets.

See Note 16 to the Consolidated Financial Statements in Part II, Item 8 for discussion on severance, restructuring and related charges.

Interest expense decreased by \$0.6 million in 2009 compared to 2008 as a result of lower interest rates and average borrowings.

Other income in 2009 consists of \$0.4 million in proceeds from an insurance claim, \$0.1 million in proceeds from the sale of property from one of our non-operating subsidiaries, \$0.1 million in interest income, and a \$0.1 million gain on foreign exchange. See Note 2 to the Consolidated Financial Statements in Part II, Item 8 for further discussion on the insurance claim proceeds. Other income in 2008 consists of a \$0.7 million gain on litigation settlements and \$0.1 million in interest income, partially offset by a \$0.2 million loss on foreign exchange and a \$0.1 million non-operating business loss.

The income tax benefit for the year ended December 31, 2009 reflects a benefit for the recognition of uncertain tax positions of \$0.4 million as the statutes of limitations on certain tax years expired. We recorded an income tax provision from continuing operations of \$0.1 million in 2008, as benefits recognized from our pre-tax loss from continuing operations and the reduction in liabilities related to uncertain tax positions were more than offset by an increase in the valuation allowance for our deferred tax assets and liabilities.

With the sale of the CML, Woods US, and Woods Canada business units in 2007, all activity associated with these units has been classified as discontinued operations. Income from operations, net of tax, for these business units was approximately \$0.6 million in 2008. Gain on sale of discontinued businesses in 2008 of \$1.7 million includes a gain recorded for the finalization and receipt of the working capital adjustment associated with the CML business unit, as well as the receipt of the working capital adjustment and recognition of part of the escrow receivable from the sales of the Woods US and Woods Canada business units.

Overall, we reported a net loss of \$6.1 million, or \$0.77 per share, for the year ended December 31, 2009, as compared to a net loss of \$16.5 million, or \$2.07 per share, in the same period of 2008.

LIQUIDITY AND CAPITAL RESOURCES

We require funding for working capital needs and capital expenditures. We believe that our cash flow from operations and the use of available borrowings under the Bank of America Credit Agreement (as defined below) provide sufficient liquidity for our operations going forward. As of December 31, 2009, we had cash of \$0.7 million. Also as of December 31, 2009, we had outstanding borrowings of \$15.8 million (54% of total capitalization) under the Bank of America Credit Agreement, which matures on November 30, 2010. Our unused borrowing availability at December 31, 2009 on the Revolving Credit Facility (as defined below) was \$1.3 million after the \$5.0 million minimum availability requirement discussed below. As of December 31, 2008, we had outstanding borrowings of \$17.5 million (48% of total capitalization) with unused borrowing availability of \$2.9 million after the \$5.0 million minimum availability requirement.

Bank of America Credit Agreement

On November 30, 2007, the Company entered into the Second Amended and Restated Credit Agreement with Bank of America (the "Bank of America Credit Agreement"). The Bank of America Credit Agreement is a \$50.6 million credit facility with a \$10.6 million term loan ("Term Loan") and a \$40.0 million revolving loan ("Revolving Credit Facility"), including a \$10.0 million sub-limit for letters of credit. The Bank of America Credit Agreement is an asset-based lending agreement involving one bank.

The annual amortization on the Term Loan, paid quarterly, is \$1.5 million with final payment of \$5.8 million due November 30, 2010. At December 31, 2009 the balance of the Term Loan was \$6.9 million and was classified as current. The Term Loan is collateralized by the Company's property, plant and equipment. The Revolving Credit Facility matures on November 30, 2010 and all extensions of credit are collateralized by a first priority security interest in and lien upon the capital stock of each material domestic subsidiary of the Company (65% of the capital stock of certain foreign subsidiaries of the Company), and all present and future assets and properties of the Company.

The Company's borrowing base under the Bank of America Credit Agreement is determined by eligible inventory and accounts receivable, amounting to \$18.4 million at December 31, 2009, and is reduced by the outstanding amount of standby and commercial letters of credit. The Bank of America Credit Agreement requires the Company to maintain a minimum level of availability such that its eligible collateral must exceed the sum of its outstanding borrowings under the Revolving Credit Facility and letters of credit by at least \$5.0 million. Currently, the Company's largest letters of credit relate to its casualty insurance programs. At December 31, 2009, total outstanding letters of credit were \$3.2 million. In addition, the Bank of America Credit Agreement prohibits the Company from paying dividends on its securities, other than dividends paid solely in securities.

Borrowings under the Bank of America Credit Agreement bear interest, at the Company's option, at either a rate equal to the bank's base rate or LIBOR plus a margin based on levels of borrowing availability. Interest rate margins for the Revolving Credit Facility under the applicable LIBOR option range from 2.00% to 2.50%, or under the applicable prime option range from 0.25% to 0.75% on borrowing availability levels of \$20.0 million to less than \$10.0 million, respectively. For the Term Loan, interest rate margins under the applicable LIBOR option range from 2.25% to 2.75%, or under the applicable prime option range from 0.50% to 1.00%. Financial covenants such as minimum fixed charge coverage and leverage ratios are not included in the Bank of America Credit Agreement.

All of the debt under the Bank of America Credit Agreement is re-priced to current rates at frequent intervals. Therefore, its fair value approximates its carrying value at December 31, 2009. For both years ended December 31, 2009 and 2008, the Company had amortization of debt issuance costs, included within interest expense, of \$0.4 million.

The Revolving Credit Facility under the Bank of America Credit Agreement requires lockbox agreements which provide for all Company receipts to be swept daily to reduce borrowings outstanding. These agreements, combined with the existence of a material adverse effect ("MAE") clause in the Bank of America Credit Agreement, resulted in the Revolving Credit Facility being classified as a current liability at December 31, 2008. The MAE clause, which is a fairly common requirement in commercial credit agreements, allows the lender to require the loan to become due if it determines there has been a material adverse effect on the Company's operations, business, properties, assets, liabilities, condition, or prospects. The classification of the Revolving Credit Facility as a current liability at December 31, 2008 is a result only of the combination of the lockbox agreements and the MAE clause.

Cash Flow

Cash provided by operating activities before changes in operating assets and discontinued operations was \$1.9 million in 2009 as compared to cash used of \$10.0 million in 2008. This variance was a result of a \$12.7 million reduction in net loss from continuing operations year over year, offset partially by a lower level of non-cash addbacks, such as loss on sale or disposal of assets. Changes in operating assets and liabilities provided \$3.2 million of cash in 2009 compared to \$4.8 million in 2008, primarily a result of lower accounts receivable and inventory balances year over year. As of December 31, 2009 and 2008, we were turning our inventory at 3.9 times per year. Cash of \$0.2 million and \$0.5 million was used in 2009 and 2008, respectively, to satisfy severance, restructuring and related obligations. Expected cash payments for severance, restructuring and related obligations in 2010 are \$0.2 million, net of sub-lease income.

Capital expenditures from continuing operations totaled \$1.9 million and \$7.5 million for the years ended December 31, 2009 and 2008, respectively. The 2008 amounts include capital spending to rebuild manufacturing lines at our Bridgeton, Missouri location. Cash provided by discontinued operations in 2008

consisted of \$9.2 million in proceeds from receivables from the 2007 sales of the Woods US, Woods Canada and CML business units.

Cash used in financing activities in the year ended December 31, 2009 reflect a \$1.9 million decrease in our debt levels since December 31, 2008.

Off-balance Sheet Arrangements

None.

Transactions with Related and Certain Other Parties

Kohlberg & Co., L.L.C. (“Kohlberg”), an affiliate of Kohlberg Investors IV, L.P., whose affiliate holds all 1,131,551 shares of our Convertible Preferred Stock, provides ongoing management oversight and advisory services to the Company. We paid \$0.5 million annually for such services in 2009 and 2008, which is included as a component of selling, general and administrative expense. We expect to incur \$0.5 million annually in future years.

OUTLOOK FOR 2010

We experienced lower volume performance throughout 2009 in nearly all of our business units driven by market softness, as well as our decision to exit certain unprofitable business lines. Given the current economic environment, we believe the Company has the opportunity to experience growth in-line with gross domestic product (“GDP”) for 2010.

Cost of goods sold is subject to variability in the prices for certain raw materials, most significantly thermoplastic resins used in the manufacture of plastic products for the Continental, Container and Contico businesses. After substantial increases through the first ten months of 2008, prices of plastic resins fell dramatically at the end of 2008 as world demand fell and suppliers sold off excess inventories. Prices increased somewhat in the first quarter of 2009, followed by moderate price increases for polyethylene and substantial price increases for polypropylene during the balance of 2009. The higher polypropylene costs were due to high export demand, low inventories at the producer level, and low production of propylene monomer, which is the primary raw material in the production of polypropylene. Prices of both polyethylene and polypropylene have continued to rise during the first quarter of 2010. We have not employed an active hedging program related to our commodity price risk, but are employing other strategies for managing this risk, including contracting for a certain percentage of resin needs through supply agreements and opportunistic spot purchases. In a climate of rising raw material costs, we have experienced difficulty in raising prices to shift these higher costs to our customers, particularly to our mass merchant customers for our plastic products. Our future earnings may be negatively impacted to the extent further increases in costs for raw materials cannot be recovered or offset through higher selling prices within a timely manner. We cannot predict the direction our raw material prices will take during 2010.

Over the past few years, our management has been focused on a number of restructuring and cost reduction initiatives, including the consolidation of facilities, divestiture of non-core operations, SG&A cost rationalization and organizational changes. We have and expect to continue to benefit from various profit enhancing strategies such as process improvements, value engineering products, and improved sourcing/purchasing.

SG&A expenses as a percentage of sales were higher in 2009 as compared to 2008. The percentage has increased primarily as a result of expenses associated with the transition and hiring of executive level personnel in 2009. The Company will continue to evaluate on an on-going basis the possibility of further consolidation of administrative processes and other SG&A expenses in order to achieve cost improvements.

Interest rates dropped in 2009. Ultimately, we cannot predict the future levels of interest rates. Under the Bank of America Credit Agreement the Company’s interest rates on all of our outstanding borrowings and letters of credit are lower as of December 31, 2009 than they were as of December 31, 2008.

Given our history of operating losses, along with guidance provided by the accounting literature covering accounting for income taxes, we are unable to conclude it is more likely than not that we will be able to

generate future taxable income sufficient to realize the benefits of domestic deferred tax assets carried on our books. Therefore, a full valuation allowance on the net deferred tax asset position was recorded at December 31, 2009, and we do not expect to record the benefit of any deferred tax assets that may be generated in 2010. We will continue to record current expense, within continuing and discontinued operations, associated with foreign and state income taxes.

We expect our working capital levels to remain constant as a percentage of sales. However, inventory carrying values may be adversely affected by higher material costs. We expect to use cash flow in 2010 for capital expenditures and payments due under our Term Loan as well as the settlement of previously established restructuring and settlement accruals. The restructuring accruals relate to non-cancelable lease obligations for abandoned facilities, and the settlement accruals relate to amounts due in accordance with a settlement agreement involving our former Woods business unit. The restructuring accruals do not create incremental cash obligations in that we are obligated to make the associated payments whether we occupy the facilities or not. The amount we will ultimately pay out under these restructuring accruals is dependent on our ability to maintain our current sublet arrangements on a portion of the abandoned facilities.

The Company was in compliance with the covenants of the Bank of America Credit Agreement as of December 31, 2009. The Bank of America Credit Agreement requires the Company to maintain a minimum level of availability (eligible collateral base less outstanding borrowings under the Revolving Credit Facility and letters of credit) such that its eligible collateral must exceed the sum of its outstanding borrowings under the Revolving Credit Facility and letters of credit by at least \$5.0 million.

If we are unable to comply with the terms of the Bank of America Credit Agreement, we could seek to obtain amendments and pursue increased liquidity through additional debt financing and/or the sale of assets. However, there can be no assurance that such financing could be obtained, especially given the current environment within the credit markets. The Company believes that it will be able to comply with its covenants under the Bank of America Credit Agreement throughout the term of the agreement. In addition, we are continually evaluating alternatives relating to the sale of excess assets and divestitures of certain of our business units. Asset sales and business divestitures present opportunities to provide additional liquidity by de-leveraging our financial position. However, the Company may not be able to secure liquidity through the sale of assets on favorable terms or at all.

CRITICAL ACCOUNTING ESTIMATES

Our significant accounting policies are more fully described in Note 2 to the Consolidated Financial Statements of Katy included in Part II, Item 8. Certain of our accounting policies as discussed below require the application of significant judgment by management in selecting the appropriate assumptions for calculating amounts to record in our financial statements. By their nature, these judgments are subject to an inherent degree of uncertainty.

Revenue Recognition — Revenue is recognized for all sales, including sales to distributors, at the time the products are shipped and title has transferred to the customer, provided that a purchase order has been received or a contract has been executed, there are no uncertainties regarding customer acceptances, the sale price is fixed and determinable and collection is deemed probable. The Company's standard shipping terms are FOB shipping point. Sales discounts, returns and allowances, and cooperative advertising are included in net sales. These provisions are estimated at the time of sale. The provision for doubtful accounts is included in selling, general and administrative expenses.

Stock-based Compensation — Compensation cost recognized during the years ended December 31, 2009 and 2008 includes: a) compensation cost for all stock options granted prior to, but not yet vested as of, January 1, 2006, and granted subsequent to January 1, 2006, based on the grant date fair value amortized over the options' vesting period and b) compensation cost for outstanding SARs as of December 31, 2009 and 2008 based on the December 31, 2009 and 2008 fair value, respectively.

Accounts Receivable — We perform ongoing credit evaluations of our customers and adjust credit limits based upon payment history and the customer's current creditworthiness, as determined by our review of their current credit information. We continuously monitor collections and payment from our customers and maintain

a provision for estimated credit losses based upon our historical experience and any specific customer collection issues that we have identified. While such credit losses have historically been within our expectations and the provision established, we cannot guarantee that we will continue to experience the same credit loss rates that we have in the past.

Inventories — We value our inventory at the lower of the actual cost to purchase and/or manufacture the inventory or the current net realizable value of the inventory. We regularly review inventory quantities on hand and record a provision for excess and obsolete inventory based primarily on our estimated forecast of product demand and production requirements for the next twelve months. Our accounting policies state that business units are to identify, at a minimum, those inventory items that are in excess of either one year's historical or one year's forecasted usage, and to use business judgment in determining which is the more appropriate metric. Those inventory items must then be evaluated on a lower of cost or market basis for realization. A significant increase in the demand for our products could result in a short-term increase in the cost of inventory purchases while a significant decrease in demand could result in an increase in the amount of excess inventory quantities on hand. Additionally, our estimates of future product demand may prove to be inaccurate, in which case we may have understated or overstated the provision required for excess and obsolete inventory. In the future, if our inventory is determined to be overvalued, we would be required to recognize such costs in our cost of goods sold at the time of such determination.

Although we make every effort to ensure the accuracy of our forecasts of future product demand, any significant unanticipated changes in demand or product developments could have a significant impact on the value of our inventory and our reported operating results. Our reserves for excess and obsolete inventory were \$1.3 million as of both December 31, 2009 and 2008.

Goodwill and Impairments of Long-Lived Assets — In connection with certain acquisitions, we recorded goodwill representing the cost of the acquisition in excess of the fair value of the net assets acquired. At December 31, 2009 we had goodwill recorded of \$0.7 million. For purposes of evaluating goodwill impairment, the Company consists of one reporting unit, which is the same as the Company itself as a whole. The fair value of the reporting unit is determined annually, or as indicators of impairment are identified, and the fair value is compared to the carrying value of the reporting unit. Fair value is calculated using a combination of a market approach and a discounted cash flow calculation, with equal weight being placed on each calculation. To execute the market approach, an equity fair value calculation is prepared using the share price of the Company's common stock at selected periods of time multiplied by the total outstanding shares. Our preferred shares are assumed converted into common shares for purposes of this calculation, and an equal weight is placed on each share price used. The discounted cash flow calculation uses management's operating budget to project the following fiscal year's cash flows, and forecasted amounts for the next four years based on management's best estimate of increases in sales and operating expenses as well as gross margin improvements. If the fair value exceeds the carrying value, then no adjustment is necessary. If the carrying value of the reporting unit exceeds the fair value, appraisals are performed of long-lived assets and other adjustments are made to arrive at a revised fair value balance sheet. This revised fair value balance sheet (without goodwill) is compared to the fair value of the business previously determined, and a revised goodwill amount is determined. If the indicated goodwill amount meets or exceeds the current carrying value of goodwill, then no adjustment is required. However, if the result indicates a reduced level of goodwill, an impairment is recorded to state the goodwill at the revised level. Any impairments of goodwill are recorded as a component of income from continuing operations. As of December 31, 2009 the fair value of our reporting unit exceeded the carrying value by 105%.

We review our long-lived assets for impairment periodically and/or whenever triggering events indicate that an impairment may have occurred. We monitor our operations for triggering events that may cause us to perform an impairment analysis. These events include, among others, loss of product lines, poor operating performance and abandonment of facilities. For assets that are to be held and used, we compare undiscounted future cash flows associated with the asset (or asset group) and determine if the carrying value of the asset (asset group) will be recovered by those cash flows over the remaining useful life of the asset (or of the primary asset of an asset group). If the future undiscounted cash flows indicate that the carrying value of the asset (asset group) will not be recovered, then the asset is marked to fair value. For assets that are to be disposed of by sale or by a means other than by sale, the identified asset (or disposal group if a group of assets

or entire business unit) is marked to fair value less costs to sell. In the case of the planned sale of a business unit, disposal groups are reported as discontinued operations on the consolidated financial statements if cash flows of the disposal group are separately identifiable.

Deferred Income Taxes — We recognize deferred income tax assets and liabilities based on the differences between the financial statement carrying amounts and the tax bases of assets and liabilities. Deferred income tax assets also include federal, state and foreign net operating loss carry-forwards, primarily due to the significant operating losses incurred during recent years, as well as various tax credits. We regularly review our deferred income tax assets for recoverability taking into consideration historical net income (losses), projected future income (losses) and the expected timing of the reversals of existing temporary differences. We establish a valuation allowance when it is more likely than not that these assets will not be recovered. As of December 31, 2009, we had a valuation allowance of \$75.7 million. Given the negative evidence provided by our history of operating losses, we were unable to conclude that it is more likely than not that our deferred tax assets would be recoverable through the generation of future taxable income. We will continue to evaluate our valuation allowance requirements based on future operating results and business acquisitions and dispositions, and we may adjust our deferred tax asset valuation allowance. Such changes in our deferred tax asset valuation allowance will be reflected in current operations through our income tax provision.

We also carry liabilities for uncertain tax positions in our Consolidated Financial Statements. The evaluation of a tax position is a two-step process, the first step being recognition. We determine whether it is more-likely-than-not that a tax position will be sustained upon tax examination, including resolution of any related appeals or litigation, based on only the technical merits of the position. The technical merits of a tax position derive from both statutory and judicial authority (legislation and statutes, legislative intent, regulations, rulings, and case law) and their applicability to the facts and circumstances of the tax position. If a tax position does not meet the more-likely-than-not recognition threshold, the benefit of that position is not recognized in the financial statements. The second step is measurement. A tax position that meets the more-likely-than-not recognition threshold is measured to determine the amount of benefit to recognize in the financial statements. The tax position is measured as the largest amount of benefit that is greater than 50 percent likely of being realized upon ultimate resolution with a taxing authority.

Workers' Compensation and Product Liabilities — We make payments for workers' compensation and product liability claims generally through the use of a third party claims administrator. We have purchased insurance coverage for large claims over our large deductible program and self-insured retention levels. Our workers' compensation liabilities are developed using actuarial methods based upon historical data for payment patterns, cost trends, and other relevant factors. In order to consider a range of possible outcomes, we have based our estimates of liabilities in this area on several different sources of loss development factors, including those from the insurance industry, the manufacturing industry, and factors developed in-house. Our general approach is to identify a reasonable, logical conclusion, typically in the middle range of the possible outcomes. While we believe that our liabilities for workers' compensation and product liability claims as of December 31, 2009 are adequate and that the judgment applied is appropriate, such estimated liabilities could differ materially from what will actually transpire in the future.

Environmental and Other Contingencies — We and certain of our current and former direct and indirect corporate predecessors, subsidiaries and divisions are involved in remedial activities at certain present and former locations and have been identified by the United States Environmental Protection Agency, state environmental agencies and private parties as potentially responsible parties ("PRPs") at a number of hazardous waste disposal sites under the Comprehensive Environmental Response, Compensation and Liability Act ("Superfund") or equivalent state laws and, as such, may be liable for the cost of cleanup and other remedial activities at these sites. Responsibility for cleanup and other remedial activities at a Superfund site is typically shared among PRPs based on an allocation formula. Under the federal Superfund statute, parties could be held jointly and severally liable, thus subjecting them to potential individual liability for the entire cost of cleanup at the site. Based on our estimate of allocation of liability among PRPs, the probability that other PRPs, many of whom are large, solvent, public companies, will fully pay the costs apportioned to them, currently available information concerning the scope of contamination, estimated remediation costs, estimated legal fees and other factors, we have recorded and accrued for environmental liabilities in amounts that we deem reasonable. The ultimate costs will depend on a number of factors and the amount currently accrued

represents our best current estimate of the total costs to be incurred. We expect this amount to be substantially paid over the next one to four years. See Note 15 to the Consolidated Financial Statements in Part II, Item 8.

Severance, Restructuring and Related Charges — We have completed several cost reduction and facility consolidation initiatives including, (1) the closure or consolidation of manufacturing, distribution and office facilities, and (2) the centralization of business units. These initiatives have resulted in significant severance, restructuring and related charges. Included in these charges are one-time termination benefits including severance, benefits and other employee-related costs associated with employee terminations; contract termination costs mostly related to non-cancelable lease liabilities for abandoned facilities, net of sub-lease revenue; and other costs associated with the consolidation of administrative and operational functions and consultants working on sourcing and other manufacturing and production efficiency initiatives. We recognize costs (including costs for one-time termination benefits) associated with exit or disposal activities as they are incurred. However, charges related to non-cancelable leases require estimates of sub-lease income and adjustments to these liabilities are possible in the future depending on the accuracy of the sub-lease assumptions made.

NEW ACCOUNTING PRONOUNCEMENTS

See Note 2 to the Consolidated Financial Statements in Part II, Item 8 for a discussion of new accounting pronouncements and the potential impact to the Company's consolidated results of operations and financial position.

Item 8. FINANCIAL STATEMENTS AND SUPPLEMENTARY DATA

REPORT OF INDEPENDENT REGISTERED PUBLIC ACCOUNTING FIRM

To the Board of Directors and
Stockholders of Katy Industries, Inc.

We have audited the accompanying consolidated balance sheets of Katy Industries, Inc. and subsidiaries as of December 31, 2009 and 2008, and the related consolidated statements of operations, stockholders' equity and comprehensive income, and cash flows for each of the years in the two-year period ended December 31, 2009. Katy Industries, Inc.'s management is responsible for these consolidated financial statements. Our responsibility is to express an opinion on these consolidated financial statements based on our audits.

We conducted our audits in accordance with the standards of the Public Company Accounting Oversight Board (United States). Those standards require that we plan and perform the audit to obtain reasonable assurance about whether the consolidated financial statements are free of material misstatement. The Company is not required to have, nor were we engaged to perform, an audit of its internal control over financial reporting. Our audit included consideration of internal control over financial reporting as a basis for designing audit procedures that are appropriate in the circumstances, but not for the purpose of expressing an opinion on the effectiveness of the Company's internal control over financial reporting. Accordingly, we express no such opinion. An audit also includes examining, on a test basis, evidence supporting the amounts and disclosures in the consolidated financial statements, assessing the accounting principles used and significant estimates made by management, as well as evaluating the overall financial statement presentation. We believe that our audits provide a reasonable basis for our opinion.

In our opinion, the consolidated financial statements referred to above present fairly, in all material respects, the consolidated financial position of Katy Industries, Inc. and subsidiaries as of December 31, 2009 and 2008, and the consolidated results of their operations and their cash flows for each of the years in the two-year period ended December 31, 2009 in conformity with accounting principles generally accepted in the United States of America.

/s/ UHY LLP

St. Louis, Missouri
March 25, 2010

KATY INDUSTRIES, INC. AND SUBSIDIARIES
CONSOLIDATED BALANCE SHEETS
AS OF DECEMBER 31, 2009 and 2008
(Amounts in Thousands)

ASSETS

	2009	2008
CURRENT ASSETS:		
Cash	\$ 747	\$ 683
Trade accounts receivable, net of allowances of \$146 and \$287	12,831	13,773
Inventories, net	16,195	19,911
Other current assets	1,144	3,516
Total current assets	30,917	37,883
OTHER ASSETS:		
Goodwill	665	665
Intangibles, net	4,010	4,455
Other	2,830	1,809
Total other assets	7,505	6,929
PROPERTY AND EQUIPMENT		
Land and improvements	336	336
Buildings and improvements	9,514	8,686
Machinery and equipment	91,585	92,693
	101,435	101,715
Less – Accumulated depreciation	(73,417)	(69,232)
Property and equipment, net	28,018	32,483
Total assets	\$ 66,440	\$ 77,295

See Notes to Consolidated Financial Statements.

KATY INDUSTRIES, INC. AND SUBSIDIARIES
CONSOLIDATED BALANCE SHEETS
AS OF DECEMBER 31, 2009 and 2008
(Amounts in Thousands, Except Share Data)

LIABILITIES AND STOCKHOLDERS' EQUITY

	2009	2008
CURRENT LIABILITIES:		
Accounts payable	\$ 10,476	\$ 10,283
Book overdraft	1,285	2,289
Accrued compensation	2,614	3,015
Accrued expenses	14,252	14,266
Current maturities, long-term debt	6,899	1,500
Revolving credit agreement	8,856	9,118
Total current liabilities	44,382	40,471
 LONG-TERM DEBT, less current maturities.	 —	 6,928
 OTHER LIABILITIES	 8,739	 10,603
Total liabilities.	53,121	58,002
 COMMITMENTS AND CONTINGENCIES (Notes 15 and 17)		
 STOCKHOLDERS' EQUITY		
15% Convertible preferred stock, \$100 par value; authorized 1,200,000 shares; issued and outstanding 1,131,551 shares; liquidation value \$113,155.	108,256	108,256
Common stock, \$1 par value; authorized 35,000,000 shares; issued 9,822,304 shares.	9,822	9,822
Additional paid-in capital	27,246	27,248
Accumulated other comprehensive loss	(2,053)	(1,742)
Accumulated deficit	(108,515)	(102,397)
Treasury stock, at cost, 1,871,128 shares.	(21,437)	(21,894)
Total stockholders' equity	13,319	19,293
Total liabilities and stockholders' equity	\$ 66,440	\$ 77,295

See Notes to Consolidated Financial Statements.

KATY INDUSTRIES, INC. AND SUBSIDIARIES
CONSOLIDATED STATEMENTS OF OPERATIONS
FOR THE YEARS ENDED DECEMBER 31, 2009 and 2008
(Amounts in Thousands, Except Per Share Data)

	2009	2008
Net sales	\$141,196	\$167,802
Cost of goods sold	121,134	155,678
Gross profit	20,062	12,124
Selling, general and administrative expenses	25,914	28,944
Impairment of long-lived assets	118	—
Severance, restructuring and related charges	92	(360)
Loss on sale or disposal of assets	91	995
Operating loss	(6,153)	(17,455)
Interest expense	(1,165)	(1,686)
Other, net	705	467
Loss from continuing operations before income tax benefit (provision)	(6,613)	(18,674)
Income tax benefit (provision) from continuing operations	495	(127)
Loss from continuing operations	(6,118)	(18,801)
Income from operations of discontinued businesses (net of tax)	—	584
Gain on sale of discontinued businesses (net of tax)	—	1,735
Net loss	\$ (6,118)	\$ (16,482)
Loss per share of common stock – Basic and diluted		
Loss from continuing operations	\$ (0.77)	\$ (2.36)
Discontinued operations	—	0.29
Net loss	\$ (0.77)	\$ (2.07)

See Notes to Consolidated Financial Statements.

KATY INDUSTRIES, INC. AND SUBSIDIARIES
CONSOLIDATED STATEMENTS OF STOCKHOLDERS' EQUITY
FOR THE YEARS ENDED DECEMBER 31, 2009 and 2008
(Amounts in Thousands, Except Share Data)

	Convertible Preferred Stock		Common Stock		Additional Paid-in Capital	Accumulated Other Comprehensive Income (Loss)	Accumulated Deficit	Treasury Stock	Comprehensive Loss	Total Stockholders' Equity
	Number of Shares	Par Value	Number of Shares	Par Value						
Balance,										
January 1, 2008	1,131,551	\$108,256	9,822,304	\$9,822	\$27,338	\$ (1,112)	\$ (85,915)	\$ (21,933)	\$ (16,482)	\$ 36,456
Net loss	—	—	—	—	—	—	(16,482)	—	\$ (16,482)	(16,482)
Foreign currency translation adjustment	—	—	—	—	—	(761)	—	—	(761)	(761)
Pension and other postretirement benefits	—	—	—	—	—	131	—	—	131	131
Comprehensive loss	—	—	—	—	—	—	—	—	<u>\$ (17,112)</u>	(51)
Stock compensation	—	—	—	—	(51)	—	—	—	—	—
Other	—	—	—	—	(39)	—	—	39	—	—
Balance,										
December 31, 2008	1,131,551	\$108,256	9,822,304	\$9,822	\$27,248	\$ (1,742)	\$ (102,397)	\$ (21,894)	\$ (6,118)	\$ 19,293
Net loss	—	—	—	—	—	—	(6,118)	—	\$ (6,118)	(6,118)
Foreign currency translation adjustment	—	—	—	—	—	41	—	—	41	41
Pension and other postretirement benefits	—	—	—	—	—	(352)	—	—	(352)	(352)
Comprehensive loss	—	—	—	—	—	—	—	—	<u>\$ (6,429)</u>	455
Stock compensation	—	—	—	—	455	—	—	—	—	—
Other	—	—	—	—	(457)	—	—	457	—	—
Balance,										
December 31, 2009	1,131,551	\$108,256	9,822,304	\$9,822	\$27,246	\$ (2,053)	\$ (108,515)	\$ (21,437)	\$ (6,118)	\$ 13,319

KATY INDUSTRIES, INC. AND SUBSIDIARIES
CONSOLIDATED STATEMENTS OF CASH FLOWS
FOR THE YEARS ENDED DECEMBER 31, 2009 and 2008
(Amounts in Thousands)

	2009	2008
Cash flows from operating activities:		
Net loss	\$(6,118)	\$(16,482)
Income from discontinued operations	—	(2,319)
Loss from continuing operations	(6,118)	(18,801)
Depreciation	6,305	7,774
Amortization of intangible assets	529	485
Amortization of debt issuance costs	382	382
Impairment of long-lived assets	118	—
Stock-based compensation	560	(186)
Loss on sale or disposal of assets	91	995
Gain on litigation settlement	—	(723)
Deferred income taxes	—	48
	<u>1,867</u>	<u>(10,026)</u>
Changes in operating assets and liabilities:		
Accounts receivable	1,080	4,061
Inventories	3,792	5,738
Other assets	1,152	(1,095)
Accounts payable	78	53
Accrued expenses	(590)	(2,605)
Other	(2,284)	(1,378)
	<u>3,228</u>	<u>4,774</u>
Net cash provided by (used in) continuing operations	<u>5,095</u>	<u>(5,252)</u>
Net cash provided by discontinued operations	—	425
Net cash provided by (used in) operating activities	<u>5,095</u>	<u>(4,827)</u>
Cash flows from investing activities:		
Capital expenditures	(1,948)	(7,535)
Proceeds from sale of assets, net	3	159
Net cash used in continuing operations	(1,945)	(7,376)
Net cash provided by discontinued operations	—	9,169
Net cash (used in) provided by investing activities	<u>(1,945)</u>	<u>1,793</u>
Cash flows from financing activities:		
Net (repayments) borrowings on revolving loans	(365)	6,265
Decrease in book overdraft	(1,004)	(2,254)
Repayments of term loan	(1,529)	(2,172)
Net cash (used in) provided by financing activities	<u>(2,898)</u>	<u>1,839</u>
Effect of exchange rate changes on cash	(188)	(137)
Net increase (decrease) in cash	64	(1,332)
Cash, beginning of period	683	2,015
Cash, end of period	<u>\$ 747</u>	<u>\$ 683</u>

See Notes to Consolidated Financial Statements.

KATY INDUSTRIES, INC. AND SUBSIDIARIES
NOTES TO CONSOLIDATED FINANCIAL STATEMENTS
As of December 31, 2009 and 2008

Note 1. ORGANIZATION OF THE BUSINESS

Katy Industries, Inc. (“Katy” or the “Company”) was organized as a Delaware corporation in 1967. The activities of the Company include the manufacture, import and distribution of a variety of commercial cleaning supplies and storage products. Principal geographic markets are in the United States, Canada, and Europe and include the sanitary maintenance, foodservice, mass merchant retail and home improvement markets.

Note 2. SIGNIFICANT ACCOUNTING POLICIES

Consolidation Policy — The consolidated financial statements include the accounts of Katy Industries, Inc. and subsidiaries in which it has a greater than 50% voting interest or significant influence, collectively “Katy” or the “Company”. All significant intercompany accounts, profits and transactions have been eliminated in consolidation. Investments in affiliates which do not meet the criteria of a variable interest entity, and which are not majority owned but with respect to which the Company exercises significant influence, are reported using the equity method.

As part of the continuous evaluation of its operations, the Company has acquired and disposed of certain of its operating units in recent years. Those which affected the Consolidated Financial Statements for the year ended December 31, 2008 are discussed in Note 5.

Use of Estimates — The preparation of financial statements in conformity with accounting principles generally accepted in the United States of America requires management to make estimates and assumptions that affect the reported amounts of assets and liabilities and disclosure of contingent assets and liabilities at the date of the financial statements and the reported amounts of revenues and expenses during the reporting period. Actual results could differ from those estimates.

Reclassifications — Certain reclassifications on the statement of cash flows were made to prior year amounts in order to consistently present current year disclosure.

Revenue Recognition — Revenue is recognized for all sales, including sales to distributors, at the time the products are shipped and title has transferred to the customer, provided that a purchase order has been received or a contract has been executed, there are no uncertainties regarding customer acceptances, the sale price is fixed and determinable and collection is deemed probable. The Company’s standard shipping terms are FOB shipping point. Sales are net of provisions for returns, discounts, customer allowances (such as volume rebates) and cooperative advertising allowances. The Company’s sales arrangements do not typically contain standard right of return provisions or limit returns at a certain percentage of sales price or margin; however, in certain instances where a product may be returned, the Company recognizes revenue only if all of the following conditions are met: a) the sale price is substantially fixed or determinable at date of sale; b) buyer has either paid or is obligated to pay the seller and the obligation is not contingent on resale of the product; c) buyer’s obligation to seller would not be changed in the event of theft or physical destruction of the product; d) buyer has economic substance apart from the seller; e) seller does not have significant obligations for future performance to directly bring about the resale of product by the buyer; and f) the amount of future returns can be reasonably estimated (i.e. defective/wrong products). The Company records discounts, customer allowances and cooperative advertising allowances as reductions of revenue, provisions for which are estimated on a periodic basis based on historical experience.

Advertising Costs — Advertising costs are expensed as incurred. Advertising costs within continuing operations expensed in 2009 and 2008 were \$0.6 million and \$0.9 million, respectively.

Accounts Receivable and Allowance for Doubtful Accounts — Trade accounts receivable are recorded at the invoiced amount and do not bear interest. The allowance for doubtful accounts is the Company’s best estimate of the amount of probable credit losses in its existing accounts receivable. The Company determines the allowance based on its historical write-off experience. The Company reviews its allowance for doubtful accounts quarterly, which includes a review of past due balances over 30 days. All other balances are reviewed on a pooled basis by market distribution channels. Account balances are charged off against the allowance

KATY INDUSTRIES, INC. AND SUBSIDIARIES
NOTES TO CONSOLIDATED FINANCIAL STATEMENTS
As of December 31, 2009 and 2008

Note 2. SIGNIFICANT ACCOUNTING POLICIES – (continued)

when the Company determines it is probable the receivable will not be recovered. The Company does not have any off-balance-sheet credit exposure related to its customers.

Concentration of Credit Risk—Financial instruments which potentially subject the Company to concentrations of credit risk consist principally of cash and accounts receivable. At times, cash in banks is in excess of the Federal Deposit Insurance Corporation (“FDIC”) insurance limit and the Canada Deposit Insurance Corporation for our Canadian operations. The Company has not experienced any loss as a result of those deposits and does not expect any in the future.

Inventories—Inventories are stated at the lower of cost or market value, and reserves are established for excess and obsolete inventory in order to ensure proper valuation of inventories. Cost includes materials, labor and overhead. At December 31, 2009 and 2008, approximately 56% and 50%, respectively, of the Company’s inventories were accounted for using the last-in, first-out (“LIFO”) method of costing, while the remaining inventories were accounted for using the first-in, first-out (“FIFO”) method. Current cost, as determined using the FIFO method, exceeded LIFO cost by \$3.5 million and \$4.3 million at December 31, 2009 and 2008, respectively. For the years ended December 31, 2009 and 2008, the Company recognized a gain (loss) of \$0.8 million and \$(0.3) million, respectively, of LIFO valuation adjustments. The components of inventories are:

	December 31,	
	2009	2008
	(Amounts in Thousands)	
Raw materials	\$10,240	\$12,764
Work in process	—	718
Finished goods	10,744	12,054
Inventory reserves	(1,315)	(1,345)
LIFO reserve	(3,474)	(4,280)
	\$16,195	\$19,911

Goodwill—Goodwill represents the excess purchase price over the fair value of net assets acquired. Goodwill is not amortized, but is tested for impairment annually as of the end of the fourth quarter. For purposes of evaluating goodwill impairment, the Company consists of one reporting unit, which is the same as the Company itself as a whole. The fair value of the reporting unit is determined annually, or as indicators of impairment are identified, and the fair value is compared to the carrying value of the reporting unit. Fair value is calculated using a combination of a market approach and a discounted cash flow calculation, with equal weight being placed on each calculation. To execute the market approach, an equity fair value calculation is prepared using the share price of the Company’s common stock at selected periods of time multiplied by the total outstanding shares. Preferred shares are assumed converted into common shares for purposes of this calculation, and an equal weight is placed on each share price used. The discounted cash flow calculation uses management’s operating budget to project the following fiscal year’s cash flows, and forecasted amounts for the next four years based on management’s best estimate of increases in sales and operating expenses as well as gross margin improvements. If the fair value exceeds the carrying value, then no adjustment is necessary. If the carrying value of the reporting unit exceeds the fair value, appraisals are performed of long-lived assets and other adjustments are made to arrive at a revised fair value balance sheet. This revised fair value balance sheet (without goodwill) is compared to the fair value of the business previously determined, and a revised goodwill amount is determined. If the indicated goodwill amount meets or exceeds the current carrying value of goodwill, then no adjustment is required. However, if the result indicates a reduced level of goodwill, an impairment is recorded to state the goodwill at the revised level. Any impairments of goodwill are recorded as a component of income from continuing operations. As of December 31, 2009 the fair value of our reporting unit exceeded the carrying value by 105%. See Note 3.

KATY INDUSTRIES, INC. AND SUBSIDIARIES
NOTES TO CONSOLIDATED FINANCIAL STATEMENTS
As of December 31, 2009 and 2008

Note 2. SIGNIFICANT ACCOUNTING POLICIES – (continued)

Property and Equipment—Property and equipment are stated at cost and depreciated using the straight-line method over their estimated useful lives: buildings (10-40 years); machinery and equipment (3 – 20 years); tooling (5 years); and leasehold improvements over the remaining lease period or useful life, if shorter. Costs for repair and maintenance of machinery and equipment are expensed as incurred, unless the result significantly increases the useful life or functionality of the asset, in which case capitalization is considered. Depreciation expense from continuing operations for 2009 and 2008 was \$6.3 million and \$7.8 million, respectively.

An asset retirement obligation associated with the retirement of a tangible long-lived asset is recognized as a liability in the period in which it is incurred or becomes determinable, with an associated increase in the carrying amount of the related long-term asset. The cost of the tangible asset, including the initially recognized asset retirement cost, is depreciated over the useful life of the asset. The Company has recorded as of December 31, 2009 an asset of \$0.2 million and related liability of \$0.9 million for retirement obligations associated with returning certain leased properties to the respective lessors upon the termination of the lease arrangements. A summary of the changes in asset retirement obligation since December 31, 2007 is included in the table below (amounts in thousands):

Asset retirement obligation at January 1, 2008	\$829
Accretion expense	34
Changes in estimates	<u>(36)</u>
Asset retirement obligation at December 31, 2008	827
Accretion expense	29
Asset retirement obligation at December 31, 2009	<u>\$856</u>

On January 1, 2009, the Company entered into a new lease agreement for its largest facility in Bridgeton, Missouri. The new lease agreement utilizes significantly less square footage in order to improve the overhead cost structure. In 2008, the Company accelerated depreciation on certain assets at its Hazelwood, Missouri facility as a result of the planned shutdown of operations at this location. As a result of these two events, the Company incurred approximately \$2.3 million in the non-cash write off of fixed assets in 2008, recognized as a \$0.9 million loss on the sale or disposal of fixed assets and \$0.8 million in accelerated depreciation. Additionally, the Company incurred approximately \$0.6 million in the non-cash write off of abandoned leasehold improvements.

In connection with the new lease agreement the Company was granted a tenant improvement allowance of \$0.7 million in 2009, of which \$0.1 million was still a receivable from the landlord at December 31, 2009. The allowance was recorded as leasehold improvement assets and is being depreciated over the term of the new lease. The Company also recorded a deferred rent liability of \$0.7 million which is being amortized as a reduction of rental expense over the term of the new lease on a straight-line basis. The balance of the deferred rent liability was \$0.6 million at December 31, 2009.

In 2008, the Continental Commercial Products, LLC (“CCP”) facility located in Hazelwood, Missouri was damaged by flood waters associated with unseasonably high rainfall levels. A claim was filed under the business interruption portion of the Company’s insurance policy, which resulted in final payment of \$0.4 million being received in 2009. These proceeds are included in Other, net on the Consolidated Statements of Operations for the year ended December 31, 2009.

Impairment of Long-lived Assets—Long-lived assets, other than goodwill which is discussed above, are reviewed for impairment if events or circumstances indicate the carrying amount of these assets may not be recoverable through future undiscounted cash flows. If this review indicates that the carrying value of these assets will not be recoverable, based on future undiscounted net cash flows from the use or disposition of the asset, the carrying value is reduced to fair value. See Note 4.

KATY INDUSTRIES, INC. AND SUBSIDIARIES
NOTES TO CONSOLIDATED FINANCIAL STATEMENTS
As of December 31, 2009 and 2008

Note 2. SIGNIFICANT ACCOUNTING POLICIES – (continued)

Segment Reporting — Operating segments are components of an enterprise about which separate financial information is available that is evaluated regularly by the chief decision maker or group in deciding how to allocate resources and in assessing performance. The Company's chief decision maker reviews the results of operations and requests for capital expenditures based on one industry segment: manufacturing, importing and distributing commercial cleaning and storage products. The Company's entire revenue is generated through this segment.

Shipping and Handling Costs — Shipping and handling costs are recorded as a component of cost of goods sold.

Income Taxes — Income taxes are accounted for using a balance sheet approach known as the liability method. The liability method accounts for deferred income taxes by applying the statutory tax rates in effect at the date of the balance sheet to the differences between the book basis and tax basis of the assets and liabilities. The Company records a valuation allowance when it is more likely than not that some portion or all of the deferred income tax asset will not be realizable. See Note 11.

Foreign Currency Translation — The results of the Company's Canadian subsidiaries are translated to U.S. dollars using the current-rate method. Assets and liabilities are translated at the year end spot exchange rate, revenue and expenses at average exchange rates and equity transactions at historical exchange rates. Exchange differences arising on translation are recorded as a component of accumulated other comprehensive loss. The Company recorded gains (losses) on foreign exchange transactions from continuing operations (included in Other, net in the Consolidated Statements of Operations) of \$0.1 million and \$(0.2) million in 2009 and 2008, respectively. Cumulative foreign currency translation losses included in accumulated other comprehensive loss at December 31, 2009 and 2008 were \$0.8 million.

Accumulated Other Comprehensive Loss — The components of accumulated other comprehensive loss are foreign currency translation adjustments and pension and other postretirement benefits adjustments. The balance of the foreign currency translation adjustments account was \$0.8 million at December 31, 2009 and 2008. The balance of the pension and other postretirement benefits adjustments account was \$1.3 million and \$0.9 million at December 31, 2009 and 2008, respectively.

Fair Value of Financial Instruments — Appropriate disclosures have been made in the Notes to the Consolidated Financial Statements where the fair values of the Company's financial instrument assets and liabilities differ from their carrying value or the Company is unable to establish the fair value without incurring excessive costs. All other financial instrument assets and liabilities not specifically addressed are believed to be carried at their fair value in the accompanying Consolidated Balance Sheets.

Treasury Stock — During the year ended December 31, 2009, the Company sold shares held in a rabbi trust for a deferred compensation plan in the amount of \$0.5 million. This transaction caused no net impact to stockholders' equity.

Stock Options and Other Stock Awards — Compensation cost recognized during the years ended December 31, 2009 and 2008 includes: a) compensation cost for all stock options granted prior to, but not yet vested as of January 1, 2006, and granted subsequent to January 1, 2006, based on the grant date fair value amortized over the options' vesting period and b) compensation cost for outstanding stock appreciation rights ("SARs") as of December 31, 2009 and 2008 based on the December 31 fair value.

KATY INDUSTRIES, INC. AND SUBSIDIARIES
NOTES TO CONSOLIDATED FINANCIAL STATEMENTS
As of December 31, 2009 and 2008

Note 2. SIGNIFICANT ACCOUNTING POLICIES – (continued)

The following table shows total compensation expense (see Note 10 for descriptions of Stock Incentive Plans) included in the Consolidated Statements of Operations for the years ended December 31 (amounts in thousands):

	2009	2008
Stock option expense (income)	\$455	\$ (51)
Stock appreciation right expense (income).	105	(135)
	\$560	\$(186)

For the year ended December 31, 2008, stock option income resulted from the reversal of compensation expense recognized on the forfeiture and subsequent cancellation of unvested stock options previously held by the Company’s former President and Chief Executive Officer.

The fair value of stock options is estimated at the date of grant using a Black-Scholes option pricing model. As the Company does not have sufficient historical exercise data to provide a basis for estimating the expected term, the Company uses the simplified method for estimating the expected term by averaging the minimum and maximum lives expected for each award. In addition, the Company estimates volatility by considering its historical stock volatility over a term comparable to the remaining expected life of each award. The risk-free interest rate is the current yield available on U.S. treasury issues with a remaining term equal to each award. The Company estimates forfeitures using historical results. Its estimates of forfeitures will be adjusted over the requisite service period based on the extent to which actual forfeitures differ, or are expected to differ, from their estimate. The assumptions for expected term, volatility and risk-free rate for stock options granted during the years ended December 31, 2009 and 2008 are presented in the table below.

	December 31,	
	2009	2008
Expected term (years)	5.5 – 6.5	5.5 – 6.6
Volatility	109.9% – 117.4%	82.2% – 112.9%
Risk-free interest rate	2.0% – 2.3%	2.9% – 3.4%

The fair value of SARs, a liability award, was estimated at December 31, 2009 and 2008 using a Black-Scholes option pricing model. The Company estimated the expected term by averaging the minimum and maximum lives expected for each award. In addition, the Company estimated volatility by considering its historical stock volatility over a term comparable to the remaining expected life of each award. The risk-free interest rate was the current yield available on U.S. treasury issues with a remaining term equal to each award. The Company estimates forfeitures using historical results. Its estimates of forfeitures will be adjusted over the requisite service period based on the extent to which actual forfeitures differ, or are expected to differ, from their estimate. The assumptions for expected term, volatility and risk-free rate are presented in the table below:

	December 31,	
	2009	2008
Expected term (years)	1.4 – 6.4	2.4 – 4.7
Volatility	119.5% – 181.1%	121.3% – 161.5%
Risk-free interest rate	0.8% – 3.2%	0.9% – 1.5%

Recently Adopted Accounting Standards — In June 2009, the Financial Accounting Standards Board (“FASB”) established the Accounting Standards Codification (“AS Codification”) as the source of authoritative GAAP recognized by the FASB to be applied by nongovernmental entities. The AS Codification was not intended to change existing accounting for public companies. The AS Codification identifies the sources of accounting principles and the framework for selecting the principles to be used in the preparation of

KATY INDUSTRIES, INC. AND SUBSIDIARIES
NOTES TO CONSOLIDATED FINANCIAL STATEMENTS
As of December 31, 2009 and 2008

Note 2. SIGNIFICANT ACCOUNTING POLICIES – (continued)

financial statements. For the Company, the AS Codification was effective October 2, 2009. The Company's adoption of the AS Codification did not have a material impact on its consolidated financial statements; however, as part of the transition to the AS Codification, plain English references to the corresponding accounting principles are provided rather than specific numeric AS Codification references.

In December 2007, the FASB issued guidance which established principles and requirements for how an acquirer in a business combination (a) recognizes and measures in its financial statements the identifiable assets acquired, the liabilities assumed, and any noncontrolling interest in the acquiree, (b) recognizes and measures the goodwill acquired in a business combination or a gain from a bargain purchase, and (c) determines what information to disclose to enable users of financial statements to evaluate the nature and financial effects of the business combination. This guidance was effective for the Company for business combination transactions for which the acquisition date is on or after January 1, 2009. No business combination transactions occurred during the year ended December 31, 2009.

In September 2006, the FASB issued guidance which defined fair value, established a framework for measuring fair value in generally accepted accounting principles and expanded disclosure about fair value measurements. This guidance does not require any new fair value measurements but provides guidance in determining fair value measurements presently used in the preparation of financial statements. In October 2008, the FASB clarified this guidance for its application in an inactive market and illustrated how an entity would determine fair value when the market for a financial asset is not active. For the Company, this guidance was originally effective January 1, 2008; however, the effective date was deferred for one year and was effective for the Company January 1, 2009. The Company's adoption of this guidance did not have a material impact on its consolidated financial statements.

In December 2007, the FASB issued guidance which required the recognition of a noncontrolling interest, or minority interest, as equity in the consolidated financial statements and separate from the parent's equity. The amount of net income attributable to the noncontrolling interest would be included in consolidated net income on the face of the income statement. This guidance includes expanded disclosure requirements regarding the interests of the parent and its noncontrolling interest. For the Company, this guidance was effective January 1, 2009. The Company's adoption of this guidance did not have a material impact on its consolidated financial statements.

In March 2008, the FASB issued guidance to improve financial reporting about derivative instruments and hedging activities by requiring enhanced disclosures to enable investors to better understand the effects of the derivative instruments on an entity's financial position, operating results and cash flows. For the Company, this guidance was effective January 1, 2009. The Company's adoption of this guidance did not have a material impact on its consolidated financial statements.

In April 2008, the FASB issued guidance which amended the factors that should be considered in developing renewal or extension assumptions used to determine the useful life of a recognized intangible asset. For the Company, this guidance was effective January 1, 2009. The Company's adoption of this guidance did not have a material impact on its consolidated financial statements.

In December 2008, the FASB issued guidance which requires companies to disclose information about fair value measurements of retirement plans. For the Company, this guidance was effective December 31, 2009. The Company's adoption of this guidance did not have a material impact on the Company's consolidated financial statements.

In April 2009, the FASB issued guidance which related to fair value measurements and related disclosures, and the accounting for impaired debt securities. For the Company, this guidance was effective July 3, 2009. The Company's adoption of this guidance did not have a material impact on its consolidated financial statements.

KATY INDUSTRIES, INC. AND SUBSIDIARIES
NOTES TO CONSOLIDATED FINANCIAL STATEMENTS
As of December 31, 2009 and 2008

Note 2. SIGNIFICANT ACCOUNTING POLICIES – (continued)

In May 2009, the FASB issued guidance which established general standards of accounting for and disclosure of events that occur after the balance sheet date but before financial statements are issued or are available to be issued. For the Company, this guidance was effective July 3, 2009. This guidance did not have a material impact on the Company's consolidated financial statements. In February 2010, the FASB amended this guidance concerning certain disclosure requirements. This amended guidance was effective immediately and the Company's adoption did not have a material impact on the Company's consolidated financial statements.

In August 2009, the FASB issued guidance to provide clarification concerning fair value measurements and disclosures for liabilities and, in particular, for circumstances in which a quoted price in an active market for an identical liability is not available. For the Company, this guidance was effective October 2, 2009. The Company's adoption of this guidance did not have a material impact on the Company's consolidated financial statements.

In September 2009, the FASB issued guidance concerning technical corrections to previously issued guidance on redemptions and induced conversions of equity-classified preferred stock instruments, and their effect on the earnings per share calculation. This amended guidance was effective immediately and the Company's adoption did not have a material impact on the Company's consolidated financial statements.

Accounting Standards Not Yet Adopted— In October 2009, the FASB issued guidance concerning multiple-deliverable arrangements which would enable vendors to account for products or services separately rather than as a combined unit. This guidance is effective for revenue arrangements entered into or materially modified in fiscal years beginning on or after June 15, 2010. The Company is currently evaluating the impact of this guidance on its consolidated financial statements.

Note 3. GOODWILL AND INTANGIBLE ASSETS

Goodwill and other intangible assets are reviewed for impairment at least annually and if a triggering event were to occur in an interim period. The Company performed its annual goodwill impairment test at the end of the fourth quarters of fiscal 2009 and 2008 which resulted in no indication of impairment. Following is detailed information regarding the Company's intangible assets (amounts in thousands):

	December 31, 2009			December 31, 2008		
	Gross Amount	Accumulated Amortization	Net Carrying Amount	Gross Amount	Accumulated Amortization	Net Carrying Amount
Patents	\$ 1,202	\$ (952)	\$ 250	\$ 1,118	\$ (832)	\$ 286
Customer lists	10,231	(8,582)	1,649	10,231	(8,406)	1,825
Tradenames	5,054	(2,943)	2,111	5,054	(2,710)	2,344
Total	<u>\$16,487</u>	<u>\$(12,477)</u>	<u>\$4,010</u>	<u>\$16,403</u>	<u>\$(11,948)</u>	<u>\$4,455</u>

The Company recorded amortization expense on intangible assets from continuing operations of \$0.5 million for both years ended December 31, 2009 and 2008. Estimated aggregate future amortization expense related to intangible assets is as follows (amounts in thousands):

2010	\$ 538
2011	512
2012	486
2013	466
2014	448
Thereafter	<u>1,560</u>
Total	<u>\$4,010</u>

KATY INDUSTRIES, INC. AND SUBSIDIARIES
 NOTES TO CONSOLIDATED FINANCIAL STATEMENTS
 As of December 31, 2009 and 2008

Note 4. IMPAIRMENT OF LONG-LIVED ASSETS

Periodically throughout each year the Company reviews its long-lived assets at all of its business units for impairment. In 2009, one such analysis suggested possible impairment at the Gemtex business unit due to a decline in profitability resulting from increasing foreign competition. The analysis indicated insufficient future cash flows over the remaining useful lives of the assets to cover the carrying values of the assets. The fair value of the assets was determined using an independent appraisal as the basis for estimating fair value and the resulting impairment. As a result of this analysis, the Company recorded impairment of property, plant and equipment at its Gemtex business unit of \$0.1 million.

Note 5. DISCONTINUED OPERATIONS

Certain of the Company's former operations have been classified as discontinued operations as of and for the year ended December 31, 2008. All of these dispositions occurred as a result of determinations by management and the Board of Directors that the businesses were not a core component of the Company's long-term business strategy. The proceeds from each disposition were used to pay off portions of the Company's then outstanding debt.

On June 2, 2006, the Company sold certain assets of the Metal Truck Box business for gross proceeds of approximately \$3.6 million, including a \$1.2 million note receivable. The note receivable is included in Other Assets in the Consolidated Balance Sheets.

On June 6, 2007, the Company sold the Contico Manufacturing, Ltd. business unit for gross proceeds of approximately \$10.6 million, including a receivable of \$0.6 million associated with final working capital levels. The Company recorded a gain of \$0.1 million during 2008 in connection with the ultimate collection of the receivable.

On November 30, 2007, the Company sold the Woods Industries, Inc. and Woods Industries (Canada), Inc. business units for gross proceeds of approximately \$50.7 million, including amounts placed into escrow of \$7.7 million related to the filing and receipt of a foreign tax certificate and the sale of specific inventory. During the year ended December 31, 2008 the Company received \$7.7 million from escrow upon the receipt of the foreign tax certificate and sale of specific inventory. Also during the year ended December 31, 2008, the Company recognized an additional \$0.9 million of gain on sale of discontinued businesses of the \$0.9 million in escrow not recognized at the time of sale. Additionally, during the year ended December 31, 2008, the Company received and recognized an \$0.8 million final working capital adjustment. As of December 31, 2009 there were no amounts remaining in escrow.

The historical operating results of the discontinued business units have been segregated as discontinued operations on the Consolidated Statements of Operations. Selected financial data for discontinued operations is summarized as follows for the year ended December 31 (amounts in thousands):

	2008
Net sales	\$ —
Pre-tax operating loss.	<u>\$ (314)</u>
Pre-tax gain on sale of discontinued businesses	<u>\$1,735</u>

The loss from operations of discontinued businesses, as shown in the Consolidated Statements of Operations, includes a tax benefit of \$0.9 million for the year ended December 31, 2008.

KATY INDUSTRIES, INC. AND SUBSIDIARIES
NOTES TO CONSOLIDATED FINANCIAL STATEMENTS
As of December 31, 2009 and 2008

Note 6. INDEBTEDNESS

Long-term debt consists of the following:

	December 31,	
	2009	2008
	(Amounts in Thousands)	
Term loan payable under the Bank of America Credit Agreement, interest based on LIBOR and Prime Rates (3.00% – 4.25%), due through November 2010	\$ 6,899	\$ 8,428
Revolving loans payable under the Bank of America Credit Agreement, interest based on LIBOR and Prime Rates (2.75% – 4.75%)	<u>8,856</u>	<u>9,118</u>
Total debt.	15,755	17,546
Less revolving loans, classified as current (see below).	(8,856)	(9,118)
Less current maturities	<u>(6,899)</u>	<u>(1,500)</u>
Long-term debt	<u>\$ —</u>	<u>\$ 6,928</u>

Aggregate remaining scheduled maturities of the Term Loan as of December 31, 2009 are as follows (amounts in thousands):

2010	<u>\$6,899</u>
Total	<u>\$6,899</u>

On November 30, 2007, the Company entered into the Second Amended and Restated Credit Agreement with Bank of America (the “Bank of America Credit Agreement”). The Bank of America Credit Agreement is a \$50.6 million credit facility with a \$10.6 million term loan (“Term Loan”), which matures November 30, 2010, and a \$40.0 million revolving loan (“Revolving Credit Facility”), including a \$10.0 million sub-limit for letters of credit. The Bank of America Credit Agreement is an asset-based lending agreement involving one bank.

The annual amortization on the Term Loan, paid quarterly, is \$1.5 million with final payment of \$5.8 million due November 30, 2010. At December 31, 2009 the balance of the Term Loan was \$6.9 million and was classified as current. The Term Loan is collateralized by the Company’s property, plant and equipment. The Revolving Credit Facility has an expiration date of November 30, 2010 and all extensions of credit are collateralized by a first priority security interest in and lien upon the capital stock of each material domestic subsidiary of the Company (65% of the capital stock of certain foreign subsidiaries of the Company), and all present and future assets and properties of the Company.

The Company’s borrowing base under the Bank of America Credit Agreement is determined by eligible inventory and accounts receivable, amounting to \$18.4 million at December 31, 2009, and is reduced by the outstanding amount of standby and commercial letters of credit. The Bank of America Credit Agreement requires the Company to maintain a minimum level of availability such that its eligible collateral must exceed the sum of its outstanding borrowings under the Revolving Credit Facility and letters of credit by at least \$5.0 million. Currently, the Company’s largest letters of credit relate to its casualty insurance programs. At December 31, 2009, total outstanding letters of credit were \$3.2 million. In addition, the Bank of America Credit Agreement prohibits the Company from paying dividends on its securities, other than dividends paid solely in securities.

Borrowings under the Bank of America Credit Agreement bear interest, at the Company’s option, at either a rate equal to the bank’s base rate or LIBOR plus a margin based on levels of borrowing availability. Interest rate margins for the Revolving Credit Facility under the applicable LIBOR option range from 2.00% to 2.50%, or under the applicable prime option range from 0.25% to 0.75% on borrowing availability levels of \$20.0

KATY INDUSTRIES, INC. AND SUBSIDIARIES
NOTES TO CONSOLIDATED FINANCIAL STATEMENTS
As of December 31, 2009 and 2008

Note 6. INDEBTEDNESS – (continued)

million to less than \$10.0 million, respectively. For the Term Loan, interest rate margins under the applicable LIBOR option range from 2.25% to 2.75%, or under the applicable prime option range from 0.50% to 1.00%. Financial covenants such as minimum fixed charge coverage and leverage ratios are not included in the Bank of America Credit Agreement.

All of the debt under the Bank of America Credit Agreement is re-priced to current rates at frequent intervals. Therefore, its fair value approximates its carrying value at December 31, 2009. For both years ended December 31, 2009 and 2008, the Company had amortization of debt issuance costs, included within interest expense, of \$0.4 million.

The Revolving Credit Facility under the Bank of America Credit Agreement requires lockbox agreements which provide for all Company receipts to be swept daily to reduce borrowings outstanding. These agreements, combined with the existence of a material adverse effect (“MAE”) clause in the Bank of America Credit Agreement, resulted in the Revolving Credit Facility being classified as a current liability at December 31, 2008. The MAE clause, which is a fairly common requirement in commercial credit agreements, allows the lender to require the loan to become due if it determines there has been a material adverse effect on the Company’s operations, business, properties, assets, liabilities, condition, or prospects. The classification of the Revolving Credit Facility as a current liability at December 31, 2008 is a result only of the combination of the lockbox agreements and the MAE clause.

Note 7. EARNINGS (LOSS) PER SHARE

The Company’s diluted earnings (loss) per share were calculated using the treasury stock method. The basic and diluted earnings per share (“EPS”) calculations are as follows:

	For the Years Ended December 31,	
	2009	2008
	(Amounts in Thousands, except per share amounts)	
<u>Basic and Diluted EPS:</u>		
Loss from continuing operations	\$(6,118)	\$(18,801)
Discontinued operations	—	2,319
Net loss	\$(6,118)	\$(16,482)
Weighted average shares – Basic and Diluted	7,951	7,951
Per share amount:		
Loss from continuing operations	\$ (0.77)	\$ (2.36)
Discontinued operations	—	0.29
Net loss	\$ (0.77)	\$ (2.07)

As of December 31, 2009 and 2008, 1,125,000 options and no options were in-the-money, and 376,000 options and 1,624,600 options were out-of-the money, respectively. At December 31, 2009 and 2008, 1,131,551 convertible preferred shares were outstanding, which are in total convertible into 18,859,183 shares of Katy common stock. In-the-money options and convertible preferred shares were not included in the calculation of diluted earnings (loss) per share in any period presented because of their anti-dilutive impact as a result of the Company’s net loss position.

KATY INDUSTRIES, INC. AND SUBSIDIARIES
NOTES TO CONSOLIDATED FINANCIAL STATEMENTS
As of December 31, 2009 and 2008

Note 8. RETIREMENT BENEFIT PLANS

Pension and Other Postretirement Plans

Certain subsidiaries have pension plans covering substantially all of their employees. These plans are noncontributory, defined benefit pension plans. The benefits to be paid under these plans are generally based on employees' retirement age and years of service. The Company's funding policies, subject to the minimum funding requirements of employee benefit and tax laws, are to contribute such amounts as determined on an actuarial basis to provide the plans with assets sufficient to meet the benefit obligations. Plan assets consist primarily of fixed income investments, corporate equities and government securities. The Company also provides certain health care and life insurance benefits for some of its retired employees. The postretirement health plans are unfunded.

The Company recognizes the overfunded or underfunded positions of defined benefit postretirement plans as an asset or liability in its Consolidated Balance Sheets and recognizes as a component of other comprehensive loss the gains or losses and prior service costs or credits that arise during the period but were not recognized as components of net periodic benefit cost.

The Company expects to contribute \$45,000 to the pension plans in fiscal 2010. The Company uses a December 31 measurement date for its pension and other postretirement benefit plans. The fair value of plan assets was determined by using quoted prices in active markets for identical assets (Level 1 inputs per the fair value hierarchy). The fair value and allocation of pension plan assets is as follows (amounts in thousands):

Asset Category	December 31,			
	2009		2008	
	Fair Value	Percentage	Fair Value	Percentage
Equity Securities	\$375	42%	\$303	40%
Fixed Income Securities	492	55%	414	55%
Other	23	3%	33	5%
	<u>\$890</u>	<u>100%</u>	<u>\$750</u>	<u>100%</u>

The following table presents the funded status of the Company's pension and postretirement benefit plans for the years ended December 31, 2009 and 2008:

	Pension Benefits		Other Benefits	
	2009	2008	2009	2008
	(Amounts in Thousands)			
Change in projected benefit obligation:				
Projected benefit obligation at beginning of year . .	\$1,147	\$1,398	\$ 2,223	\$ 2,607
Interest cost	76	85	139	140
Actuarial loss (gain)	199	45	260	(280)
Adjustment for change in measurement date	—	8	—	—
Benefits paid	(91)	(389)	(245)	(244)
Projected benefit obligation at end of year	<u>\$1,331</u>	<u>\$1,147</u>	<u>\$ 2,377</u>	<u>\$ 2,223</u>
Change in plan assets:				
Fair value of plan assets at beginning of year	\$ 750	\$1,347	\$ —	\$ —
Actuarial return on plan assets	114	(224)	—	—
Employer contributions	117	18	245	244
Adjustment for change in measurement date	—	(2)	—	—
Benefits paid	(91)	(389)	(245)	(244)
Fair value of plan assets at end of year	<u>\$ 890</u>	<u>\$ 750</u>	<u>\$ —</u>	<u>\$ —</u>
Funded status at end of year	<u>\$ (441)</u>	<u>\$ (397)</u>	<u>\$(2,377)</u>	<u>\$(2,223)</u>

KATY INDUSTRIES, INC. AND SUBSIDIARIES
NOTES TO CONSOLIDATED FINANCIAL STATEMENTS
As of December 31, 2009 and 2008

Note 8. RETIREMENT BENEFIT PLANS – (continued)

	Pension Benefits		Other Benefits	
	2009	2008	2009	2008
	(Amounts in Thousands)			
Amounts recognized in Consolidated Balance				
Sheets:				
Other non-current assets	\$ (37)	\$ (47)	\$ —	\$ —
Accrued expenses	—	—	205	207
Other liabilities	478	444	2,172	2,016
Total	<u>\$441</u>	<u>\$397</u>	<u>\$2,377</u>	<u>\$2,223</u>

Accumulated other comprehensive loss at December 31, 2009 and 2008 included unrecognized actuarial losses of \$0.8 million and \$0.7 million, respectively, that had not yet been recognized in net periodic pension cost. The actuarial loss included in accumulated other comprehensive loss and expected to be recognized in net periodic pension cost during the fiscal year ending December 31, 2010 is \$48,000. The accumulated benefit obligation for all pension plans was \$1.3 million and \$1.1 million at December 31, 2009 and 2008, respectively.

The following table lists the projected benefit obligation (“PBO”), accumulated benefit obligation (“ABO”) and fair value of plan assets for the pension plans with PBOs and ABOs in excess of plan assets at December 31, 2009 and 2008 (amounts in thousands):

	2009		2008	
	Projected benefit obligation exceeds plan assets	Accumulated benefit obligation exceeds plan assets	Projected benefit obligation exceeds plan assets	Accumulated benefit obligation exceeds plan assets
Projected benefit obligation	\$1,149	\$1,149	\$969	\$969
Accumulated benefit obligation	\$1,149	\$1,149	\$969	\$969
Fair value of plan assets	\$ 672	\$ 672	\$525	\$525

The following table presents the assumptions used to determine the Company’s benefit obligations at December 31, 2009 and 2008 along with sensitivity of the Company’s plans to potential changes in certain key assumptions (dollars in thousands):

	Pension Benefits		Other Benefits	
	2009	2008	2009	2008
Assumptions as of December 31:				
Discount rates	5.75%	6.75%	5.75%	6.75%
Expected long-term return rate on assets	7.00%	7.00%	N/A	N/A
Assumed rates of compensation increases	N/A	N/A	N/A	N/A
Medical trend rate pre-65 (initial)	N/A	N/A	7.50%	6.50%
Medical trend rate post-65 (initial) . . .	N/A	N/A	8.50%	7.50%
Medical trend rate (ultimate)	N/A	N/A	5.00%	5.00%
Years to ultimate rate pre-65	N/A	N/A	6	4
Years to ultimate rate post-65	N/A	N/A	8	6

KATY INDUSTRIES, INC. AND SUBSIDIARIES
NOTES TO CONSOLIDATED FINANCIAL STATEMENTS
As of December 31, 2009 and 2008

Note 8. RETIREMENT BENEFIT PLANS – (continued)

	Pension Benefits		Other Benefits	
	2009	2008	2009	2008
<u>Impact of one-percent increase in medical trend rate:</u>				
Increase in accumulated postretirement benefit obligation.			\$201	\$180
Increase in service cost and interest cost.			\$ 11	\$ 12
<u>Impact of one-percent decrease in medical trend rate:</u>				
Decrease in accumulated postretirement benefit obligation . . .			\$175	\$157
Decrease in service cost and interest cost.			\$ 10	\$ 11

The discount rate was based on several factors comparing Moody’s AA Corporate rate and actuarial-based yield curves. In determining the expected return on plan assets, the Company considers the relative weighting of plan assets, the historical performance of total plan assets and individual asset classes and economic and other indicators of future performance. In addition, the Company may consult with and consider the opinions of financial and other professionals in developing appropriate return benchmarks.

The following table presents components of the net periodic benefit cost for the Company’s pension and postretirement benefit plans during 2009 and 2008 (amounts in thousands):

	Pension Benefits		Other Benefits	
	2009	2008	2009	2008
Interest cost	\$ 76	\$ 85	\$139	\$140
Expected return on plan assets.	(54)	(88)	—	—
Amortization of net loss	45	35	—	—
Net periodic benefit cost.	<u>\$ 67</u>	<u>\$ 32</u>	<u>\$139</u>	<u>\$140</u>

During 2008, lump-sum distributions exceeded the settlement threshold resulting in additional expense related to pension benefits of \$0.2 million not included in net periodic benefit cost above.

The following table presents estimated future benefit payments (amounts in thousands):

	Pension Benefits	Other Benefits
2010	\$ 99	\$ 211
2011	39	212
2012	62	211
2013	37	210
2014	91	207
Thereafter	810	957
Total	<u>\$1,138</u>	<u>\$2,008</u>

KATY INDUSTRIES, INC. AND SUBSIDIARIES
NOTES TO CONSOLIDATED FINANCIAL STATEMENTS
As of December 31, 2009 and 2008

Note 8. RETIREMENT BENEFIT PLANS – (continued)

In addition to the plans described above, in 1993 the Company's Board of Directors approved a retirement compensation program for certain officers and employees of the Company and a retirement compensation arrangement for the Company's then Chairman and Chief Executive Officer. The Board approved a total of \$3.5 million to fund such plans. Participants are allowed to defer 50% of their annual compensation as well as be eligible to participate in a profit sharing arrangement in which they vest over a five year period. In 2001, the Company limited participation to existing participants as well as discontinued any profit sharing arrangements. Participants can withdraw from the plan upon the latter of age 62 or termination from the Company. The obligation created by this plan is partially funded. Assets are held in a rabbi trust invested in various mutual funds. Gains and/or losses are earned by the participant. For the unfunded portion of the obligation, interest is accrued at 4% each year. The Company had \$0.9 million and \$1.1 million recorded in accrued compensation and other liabilities at December 31, 2009 and 2008, respectively, for this obligation.

401(k) Plans

The Company offers its employees the opportunity to voluntarily participate in one of two 401(k) plans administered by the Company. The Company makes matching and other contributions in accordance with the provisions of the plans and, under certain provisions, at the discretion of the Company. The Company made annual matching and other contributions for continuing operations of \$0.3 million for both years ended December 31, 2009 and 2008.

Note 9. STOCKHOLDERS' EQUITY

Convertible Preferred Stock

On June 28, 2001, the Company completed a recapitalization following an agreement on June 2, 2001 with KKTY Holding Company, LLC ("KKTY"), an affiliate of Kohlberg Investors IV, L.P. (the "Recapitalization"). Under the terms of the Recapitalization, KKTY purchased 700,000 shares of newly issued preferred stock, \$100 par value per share ("Convertible Preferred Stock"), which is convertible into 11,666,666 common shares, for an aggregate purchase price of \$70.0 million. The Convertible Preferred shares were entitled to a 15% payment in kind ("PIK") dividend (that is, dividends in the form of additional shares of Convertible Preferred Stock), compounded annually, which started accruing on August 1, 2001. PIK dividends were paid on August 1, 2002 (105,000 convertible preferred shares, equivalent to 1,750,000 common shares); August 1, 2003 (120,750 convertible preferred shares, equivalent to 2,012,500 common shares); August 1, 2004 (138,862.5 convertible preferred shares equivalent to 2,314,375 common shares); and on December 31, 2004 (66,938.5 convertible preferred shares, equivalent to 1,115,642 common shares). No dividends accrue or are payable after December 31, 2004. If converted, the 11,666,666 common shares, along with the 7,192,517 equivalent common shares from PIK dividends paid through December 31, 2004, would represent approximately 70% of the outstanding shares of common stock as of December 31, 2009, excluding outstanding options. The accruals of the PIK dividends were recorded as a charge to Additional Paid-in Capital due to the Company's accumulated deficit position, and an increase to Convertible Preferred Stock. The dividends were recorded at fair value and reduced earnings available to common shareholders in the calculation of basic and diluted earnings per share.

The Convertible Preferred Stock is convertible at the option of the holder at any time after the earlier of 1) June 28, 2006, 2) board approval of a merger, consolidation or other business combination involving a change in control of the Company, or a sale of all or substantially all of the assets or liquidation of the Company, or 3) a contested election for directors of the Company nominated by KKTY. The preferred shares 1) are non-voting (with limited exceptions), 2) are non-redeemable, except in whole, but not in part, at the Company's option (as approved only by the Class I directors) at any time after June 30, 2021, 3) were entitled to receive cumulative PIK dividends through December 31, 2004, as mentioned above, at a rate of 15% percent, 4) have no preemptive rights with respect to any other securities or instruments issued by the Company, and 5) have registration rights with respect to any common shares issued upon conversion of the

KATY INDUSTRIES, INC. AND SUBSIDIARIES
NOTES TO CONSOLIDATED FINANCIAL STATEMENTS
As of December 31, 2009 and 2008

Note 9. STOCKHOLDERS' EQUITY – (continued)

Convertible Preferred Stock. Upon a liquidation of the Company, the holders of the Convertible Preferred Stock would receive the greater of (i) an amount equal to the par value (\$100 per share) of their Convertible Preferred Stock, or (ii) an amount that the holders of the Convertible Preferred Stock would have received if their shares of Convertible Preferred Stock were converted into common stock immediately prior to the distribution upon liquidation.

Note 10. STOCK INCENTIVE PLANS

The Company has various stock incentive plans that provide for the granting of stock options, nonqualified stock options, SARs, restricted stock, performance units or shares and other incentive awards to certain employees and directors. Options have been granted at or above the market price of the Company's stock at the date of grant, typically vest over a three-year period, and are exercisable not less than twelve months or more than ten years after the date of grant. SARs have been granted at or above the market price of the Company's stock at the date of grant, typically vest over periods up to three years, and expire ten years from the date of issue. No more than 50% of the cumulative number of vested SARs held by an employee can be exercised in any one calendar year.

Options were granted in fiscal 2009 under the 2009 Vice President-Operations' Plan. All authorized shares from the plan, as approved by the Compensation Committee of the Board of Directors, were granted during 2009. There are no other authorized shares available for grant as of December 31, 2009 due to the expiration of previously approved plans. A summary of the status of the Company's stock option plans as of December 31, 2009, and changes during the year then ended is presented in the table below:

	Options	Weighted Average Exercise Price	Weighted Average Remaining Contractual Life	Aggregate Intrinsic Value (in thousands)
Outstanding at December 31, 2008.	1,624,600	\$ 2.41		
Granted	125,000	1.00		
Expired	(37,100)	13.82		
Cancelled.	<u>(211,500)</u>	<u>2.67</u>		
Outstanding at December 31, 2009.	<u>1,501,000</u>	<u>\$ 1.97</u>	<u>6.81 years</u>	<u>\$654</u>
Vested and Exercisable at December 31, 2009	<u>709,334</u>	<u>\$ 2.88</u>	<u>4.85 years</u>	<u>\$187</u>

A summary of the status of the Company's non-vested stock options as of December 31, 2009, and changes during the year then ended is presented in the table below:

	Options	Weighted Average Fair Value
Non-Vested at December 31, 2008.	1,000,000	\$0.90
Granted	125,000	0.80
Vested	<u>(333,334)</u>	<u>0.88</u>
Non-Vested at December 31, 2009.	<u>791,666</u>	<u>\$0.89</u>

As of December 31, 2009, total unvested compensation expense associated with stock options amounted to \$0.3 million, and is being amortized on a straight-line basis over the respective option's vesting period. The weighted average period in which the above compensation cost will be recognized is 1.1 years as of December 31, 2009. The Company expects all stock options outstanding at December 31, 2009 to vest. The fair value of options that vested during the years ended December 31, 2009 and 2008 was \$0.3 million and

KATY INDUSTRIES, INC. AND SUBSIDIARIES
NOTES TO CONSOLIDATED FINANCIAL STATEMENTS
As of December 31, 2009 and 2008

Note 10. STOCK INCENTIVE PLANS – (continued)

\$0.1 million, respectively. The weighted-average grant-date fair value of options granted during the years ended December 31, 2009 and 2008 was \$0.80 and \$0.90, respectively. The Company generally issues shares from treasury stock to satisfy stock option exercises.

A summary of the status of the Company's SARs plans as of December 31, 2009, and changes during the year then ended is presented in the table below:

	SARs	Weighted Average Fair Value
Non-Vested at December 31, 2008	6,666	\$0.80
Granted	38,000	1.55
Vested	(6,000)	1.59
Cancelled	(6,666)	—
Non-Vested at December 31, 2009	<u>32,000</u>	<u>\$1.54</u>
Total Outstanding at December 31, 2009	<u>495,267</u>	<u>\$1.19</u>

The weighted-average fair value of SARs granted during the years ended December 31, 2009 and 2008 was \$1.55 and \$0.94, respectively.

See Note 2 for a discussion of accounting for stock awards and related fair value disclosures.

Note 11. INCOME TAXES

The income tax (benefit) provision from continuing operations is based on the following pre-tax loss:

	2009	2008
	(Amounts in Thousands)	
Domestic	\$(5,261)	\$(18,288)
Foreign	(1,352)	(386)
Total	<u>\$(6,613)</u>	<u>\$(18,674)</u>

The income tax (benefit) provision from continuing operations consists of the following:

	2009	2008
	(Amounts in Thousands)	
Current tax (benefit) provision:		
Federal	\$(516)	\$ 898
State	21	(55)
Foreign	—	(764)
Total	<u>\$(495)</u>	<u>\$ 79</u>
Deferred tax provision:		
Federal	\$ —	\$ —
State	—	—
Foreign	—	48
Total	<u>\$ —</u>	<u>\$ 48</u>
Total (benefit) provision from continuing operations	<u>\$(495)</u>	<u>\$ 127</u>

The tax expense or benefit recorded in continuing operations is generally determined without regard to other categories of earnings, such as a loss from discontinued operations or other comprehensive income. An

KATY INDUSTRIES, INC. AND SUBSIDIARIES
NOTES TO CONSOLIDATED FINANCIAL STATEMENTS
As of December 31, 2009 and 2008

Note 11. INCOME TAXES – (continued)

exception is provided if there is aggregate pre-tax income from other categories and a pre-tax loss from continuing operations, even if a valuation allowance has been established against deferred tax assets as of the beginning of the year. The tax benefit allocated to continuing operations is the amount by which the loss from continuing operations reduces the tax expense recorded with respect to the other categories of earnings. The income tax provision for the year ended December 31, 2008 reflects a tax benefit of \$0.5 million recorded to offset the provision recorded under discontinued operations for domestic income taxes on domestic pre-tax income.

Actual income tax (benefit) provision reported from continuing operations is different than would have been computed by applying the federal statutory tax rate to loss from continuing operations before income taxes. The reasons for this difference are as follows:

	2009	2008
	(Amounts in Thousands)	
Benefit from income taxes at statutory rate	\$(2,315)	\$(6,514)
State income taxes, net of federal benefit	14	(36)
Foreign tax credits	57	—
Net operating losses adjustments	371	(162)
Valuation allowance adjustments	1,723	7,715
Foreign NOL utilization	—	(123)
Permanent items	29	16
Reduction of tax reserves	(432)	(734)
Other, net	58	(35)
Net (benefit from) provision for income taxes	\$ (495)	\$ 127

The significant components of the Company's deferred income tax liabilities and assets are as follows:

	2009	2008
	(Amounts in Thousands)	
Deferred tax liabilities		
Inventory costs	\$ (852)	\$ (872)
Deferred tax assets		
Allowance for doubtful receivables	\$ 58	\$ 115
Accrued expenses and other items	7,075	8,015
Difference between book and tax bases of property	6,492	8,639
Operating loss carry-forwards – domestic	48,627	44,121
Operating loss carry-forwards – foreign	613	131
Tax credit carry-forwards	13,731	13,872
	76,596	74,893
Less valuation allowance	(75,744)	(74,021)
	852	872
Net deferred income tax asset	\$ —	\$ —

At December 31, 2009, the Company had approximately \$128.3 million of Federal net operating loss carry-forwards (“Federal NOLs”), which will expire in years 2020 through 2029 if not utilized prior to that time. Due to tax laws governing change in control events and their relation to the Recapitalization, approximately \$12.9 million of the Federal NOLs are subject to certain limitations as to the amount that can be used to offset taxable income in any single year. The remainder of the Company's domestic and foreign net operating loss carry-forwards relate to certain U.S. operating subsidiaries, and the Company's Canadian

KATY INDUSTRIES, INC. AND SUBSIDIARIES
NOTES TO CONSOLIDATED FINANCIAL STATEMENTS
As of December 31, 2009 and 2008

Note 11. INCOME TAXES – (continued)

operations, respectively, and can only be used to offset income from these operations. At December 31, 2009, the Company’s Canadian subsidiary has Canadian net operating loss carry-forwards of approximately \$1.8 million that will expire in 2028 and 2029. The tax credit carry-forwards relate to United States federal minimum tax credits of \$1.2 million that have no expiration date, general business credits of \$0.1 million that expire in years 2019 through 2022, and foreign tax credit carryovers of \$12.4 million that expire in years 2010 through 2017.

Valuation allowances are recorded when it is considered more likely than not that some portion or all of the deferred tax assets will not be realized. A history of operating losses incurred by the domestic and certain foreign subsidiaries provides significant negative evidence with respect to the Company’s ability to generate future taxable income, a requirement in order to recognize deferred tax assets. For this reason, the Company was unable to conclude that it was more likely than not that certain deferred tax assets would be utilized in the future. The valuation allowance relates to federal, state and foreign net operating loss carry-forwards, foreign and domestic tax credits, and certain other deferred tax assets to the extent they exceed deferred tax liabilities with the exception of deferred tax assets of certain foreign subsidiaries which are considered realizable.

Accounting for Uncertainty in Income Taxes

A reconciliation of the beginning and ending balance for liabilities associated with unrecognized tax benefits is as follows (amounts in thousands):

Balances at January 1, 2008	\$2,054
Tax positions related to prior years	11
Reductions for tax positions related to prior years	(283)
Lapse of applicable statute of limitations	<u>(463)</u>
Balances at December 31, 2008	1,319
Tax positions related to prior years	140
Reductions for tax positions related to prior years	(159)
Lapse of applicable statute of limitations	<u>(413)</u>
Balances at December 31, 2009	<u>\$ 887</u>

At December 31, 2009 and 2008, the Company had reserves totaling \$0.9 million and \$1.3 million, respectively, primarily for various foreign income tax issues all of which, if recognized, would affect the effective tax rate.

The Company recognizes interest and penalties accrued related to the unrecognized tax benefits in the provision for income taxes. During 2009 and 2008, the Company recognized an insignificant amount in interest and penalties. The Company had approximately \$0.3 million and \$0.4 million for the payment of interest and penalties accrued at December 31, 2009 and 2008, respectively.

The Company believes that it is reasonably possible that the total amount of unrecognized tax benefits will change within the next twelve months. The Company has certain tax return years subject to statutes of limitation which will close within the next twelve months. Unless challenged by tax authorities, the closure of those statutes of limitation is expected to result in the recognition of uncertain tax positions in the amount of \$0.3 million.

Examination of Tax Returns

The Company and its subsidiaries file income tax returns in the U.S. federal jurisdiction, various states and foreign jurisdictions. The Company and its subsidiaries are generally no longer subject to U.S. federal, state and local examinations by tax authorities for years before 2005.

In September 2009, the Company was notified by the Internal Revenue Service (“IRS”) that it intended to examine the Company’s 2007 Federal tax return. The IRS concluded its review in February 2010 and issued a

KATY INDUSTRIES, INC. AND SUBSIDIARIES
NOTES TO CONSOLIDATED FINANCIAL STATEMENTS
As of December 31, 2009 and 2008

Note 11. INCOME TAXES – (continued)

summary report. The results of the 2007 examination did not have a material effect on the Company's unrecognized tax benefits, financial condition or results of operations.

Note 12. LEASE OBLIGATIONS

The Company has entered into non-cancelable operating leases for real property with original lease terms of up to ten years. In addition, the Company leases manufacturing and data processing equipment under operating leases expiring during the next three years.

In most cases, management expects that in the normal course of business, leases will be renewed or replaced by other leases. Future minimum lease payments as of December 31, 2009 are as follows (amounts in thousands):

2010	\$ 4,173
2011	3,072
2012	2,168
2013	2,023
2014	2,073
Thereafter	<u>8,825</u>
Total minimum payments	<u>\$22,334</u>

Liabilities totaling \$0.4 million and \$0.6 million were recorded on the Consolidated Balance Sheets at December 31, 2009 and 2008, respectively, related to the Hazelwood, Missouri leased facility which has been partially abandoned and is available for sub-lease. This facility was abandoned as cost saving measures as a result of efforts to restructure the Company's operations. These liabilities are stated at fair value (i.e., discounted), and include estimates of sub-lease revenue. See Note 16 for further discussion of the liabilities related to the non-cancelable lease of this partially abandoned facility, and Note 17 for the amounts accrued in current and long-term liabilities.

Rental expense for 2009 and 2008 for operating leases from continuing operations was \$4.7 million and \$5.9 million, respectively. Also, \$0.4 million and \$0.5 million of rent was paid and charged against liabilities in 2009 and 2008, respectively, for non-cancelable leases at facilities abandoned as a result of restructuring initiatives. These payments were offset by sub-lease income of \$0.3 million in both years.

Note 13. RELATED PARTY TRANSACTIONS

Kohlberg & Co., L.L.C., whose affiliate holds all 1,131,551 shares of the Company's Convertible Preferred Stock, provides ongoing management oversight and advisory services to the Company. The Company paid \$0.5 million annually for such services in 2009 and 2008, and expects to incur \$0.5 million annually in future years. Such amounts are recorded in selling, general and administrative expenses in the Consolidated Statements of Operations.

KATY INDUSTRIES, INC. AND SUBSIDIARIES
NOTES TO CONSOLIDATED FINANCIAL STATEMENTS
As of December 31, 2009 and 2008

Note 14. GEOGRAPHIC INFORMATION

The Company operates businesses in the United States and foreign countries. The operations of businesses within major geographic areas for 2009 and 2008 are summarized as follows (amounts in thousands):

(Amounts in Thousands)	United States	Canada	Europe	Other	Consolidated
2009:					
Sales to unaffiliated customers	\$126,985	\$7,455	\$3,570	\$3,186	\$141,196
Long-lived assets	\$ 32,360	\$ 333	\$ —	\$ —	\$ 32,693
Total assets	\$ 63,119	\$3,321	\$ —	\$ —	\$ 66,440
2008:					
Sales to unaffiliated customers	\$150,460	\$8,938	\$4,407	\$3,997	\$167,802
Long-lived assets	\$ 37,118	\$ 485	\$ —	\$ —	\$ 37,603
Total assets	\$ 72,869	\$4,426	\$ —	\$ —	\$ 77,295

Net sales for each geographic area include sales to unaffiliated customers located in that area, as reported in the Consolidated Statements of Operations.

Note 15. COMMITMENTS AND CONTINGENCIES

General Environmental Claims

The Company and certain of its current and former direct and indirect corporate predecessors, subsidiaries and divisions are involved in remedial activities at certain present and former locations and have been identified by the United States Environmental Protection Agency (“EPA”), state environmental agencies and private parties as potentially responsible parties (“PRPs”) at a number of hazardous waste disposal sites under the Comprehensive Environmental Response, Compensation and Liability Act (“Superfund”) or equivalent state laws and, as such, may be liable for the cost of cleanup and other remedial activities at these sites. Responsibility for cleanup and other remedial activities at a Superfund site is typically shared among PRPs based on an allocation formula. Under the federal Superfund statute, parties could be held jointly and severally liable, thus subjecting them to potential individual liability for the entire cost of cleanup at the site. Based on its estimate of allocation of liability among PRPs, the probability that other PRPs, many of whom are large, solvent, public companies, will fully pay the costs apportioned to them, currently available information concerning the scope of contamination, estimated remediation costs, estimated legal fees and other factors, the Company has recorded and accrued for environmental liabilities in amounts that it deems reasonable and believes that any liability with respect to these matters in excess of the accruals will not be material. The ultimate costs will depend on a number of factors and the amount currently accrued represents management’s best current estimate on an undiscounted basis of the total costs to be incurred. The Company expects this amount to be substantially paid over the next five to ten years.

W.J. Smith Wood Preserving Company (“W.J. Smith”)

The matter with W. J. Smith, a subsidiary of the Company, originated in the 1980s when the United States and the State of Texas, through the Texas Water Commission, initiated environmental enforcement actions against W.J. Smith alleging that certain conditions on the W.J. Smith property (the “Property”) violated environmental laws. In order to resolve the enforcement actions, W.J. Smith engaged in a series of cleanup activities on the Property and implemented a groundwater monitoring program.

In 1993, the EPA initiated a proceeding under Section 7003 of the Resource Conservation and Recovery Act (“RCRA”) against W.J. Smith and the Company. The proceeding sought certain actions at the site and at certain off-site areas, as well as development and implementation of additional cleanup activities to mitigate off-site releases. In December 1995, W.J. Smith, the Company and the EPA agreed to resolve the proceeding through an Administrative Order on Consent under Section 7003 of RCRA. While the Company has completed

KATY INDUSTRIES, INC. AND SUBSIDIARIES
NOTES TO CONSOLIDATED FINANCIAL STATEMENTS
As of December 31, 2009 and 2008

Note 15. COMMITMENTS AND CONTINGENCIES – (continued)

the cleanup activities required by the Administrative Order on Consent under Section 7003 of RCRA, the Company still has further post-closure obligations in the areas of groundwater monitoring and ongoing site operations and maintenance costs, as well as potential contractual obligations related to real estate matters.

Since 1990, the Company has spent in excess of \$7.0 million undertaking cleanup and compliance activities in connection with this matter. While ultimate liability with respect to this matter is not easy to determine, the Company has recorded and accrued amounts that it deems reasonable for prospective liabilities with respect to this matter.

Asbestos Claims

A. The Company has been named as a defendant in eleven lawsuits filed in state court in Alabama by a total of approximately 325 individual plaintiffs. There are over 100 defendants named in each case. In all eleven cases, the Plaintiffs claim that they were exposed to asbestos in the course of their employment at a former U.S. Steel plant in Alabama and, as a result, contracted mesothelioma, asbestosis, lung cancer or other illness. They claim that while in the plant they were exposed to asbestos in products which were manufactured by each defendant. In nine of the cases, Plaintiffs also assert wrongful death claims. The Company will vigorously defend the claims against it in these matters. The liability of the Company cannot be determined at this time.

B. Sterling Fluid Systems (USA) (“Sterling”) has tendered approximately 2,700 cases pending in Michigan, New Jersey, New York, Illinois, Nevada, Mississippi, Wyoming, Louisiana, Georgia, Massachusetts, Missouri, Kentucky, and California to the Company for defense and indemnification. With respect to one case, Sterling has demanded that the Company indemnify it for a \$200,000 settlement. Sterling bases its tender of the complaints on the provisions contained in a 1993 Purchase Agreement between the parties whereby Sterling purchased the LaBour Pump business and other assets from the Company. Sterling has not filed a lawsuit against the Company in connection with these matters.

The tendered complaints all purport to state claims against Sterling and its subsidiaries. The Company and its current subsidiaries are not named as defendants. The plaintiffs in the cases also allege that they were exposed to asbestos and products containing asbestos in the course of their employment. Each complaint names as defendants many manufacturers of products containing asbestos, apparently because plaintiffs came into contact with a variety of different products in the course of their employment. Plaintiffs claim that LaBour Pump Company, a former division of an inactive subsidiary of the Company, and/or Sterling may have manufactured some of those products.

With respect to many of the tendered complaints, including the one settled by Sterling for \$200,000, the Company has taken the position that Sterling has waived its right to indemnity by failing to timely request it as required under the 1993 Purchase Agreement. With respect to the balance of the tendered complaints, the Company has elected not to assume the defense of Sterling in these matters.

C. LaBour Pump Company, a former division of an inactive subsidiary of the Company, has been named as a defendant in approximately 400 of the New Jersey cases tendered by Sterling. The Company has elected to defend these cases, the majority of which have been dismissed or settled for nominal sums. There are approximately 90 cases which remain active as of December 31, 2009.

While the ultimate liability of the Company related to the asbestos matters above cannot be determined at this time, the Company has recorded and accrued amounts that it deems reasonable for prospective liabilities with respect to this matter.

KATY INDUSTRIES, INC. AND SUBSIDIARIES
NOTES TO CONSOLIDATED FINANCIAL STATEMENTS
As of December 31, 2009 and 2008

Note 15. COMMITMENTS AND CONTINGENCIES – (continued)

Other Claims

There are a number of product liability and workers' compensation claims pending against the Company and its subsidiaries. Many of these claims are proceeding through the litigation process and the final outcome will not be known until a settlement is reached with the claimant or the case is adjudicated. The Company estimates that it can take up to ten years from the date of the injury to reach a final outcome on certain claims. With respect to the product liability and workers' compensation claims, the Company has provided for its share of expected losses beyond the applicable insurance coverage, including those incurred, but not reported to the Company or its insurance providers, which are developed using actuarial techniques. Such accruals are developed using currently available claim information, and represent management's best estimates, including estimated legal fees, on an undiscounted basis. The ultimate cost of any individual claim can vary based upon, among other factors, the nature of the injury, the duration of the disability period, the length of the claim period, the jurisdiction of the claim and the nature of the final outcome.

Although management believes that the actions specified above in this section individually and in the aggregate are not likely to have outcomes that will have a material adverse effect on the Company's financial position, results of operations or cash flow, further costs could be significant and will be recorded as a charge to operations when, and if, current information dictates a change in management's estimates.

Note 16. SEVERANCE, RESTRUCTURING AND RELATED CHARGES

Over the past several years, the Company has initiated several cost reduction and facility consolidation initiatives, resulting in severance, restructuring and related charges. Key initiatives were the consolidation of the St. Louis, Missouri manufacturing/distribution facilities and the consolidation of the Glit facilities. These initiatives resulted from the on-going strategic reassessment of the Company's various businesses as well as the markets in which they operate.

A summary of charges (reductions) by major initiative is as follows (amounts in thousands):

	2009	2008
Consolidation of St. Louis manufacturing/distribution facilities	\$92	\$ 50
Consolidation of Glit facilities	—	(410)
Total severance, restructuring and related charges	\$92	\$(360)

Consolidation of St. Louis manufacturing/distribution facilities — In 2002, the Company committed to a plan to consolidate the manufacturing and distribution of the four CCP facilities in the St. Louis, Missouri area. Management believed that in order to implement a more competitive cost structure, the excess capacity at the four plastic molding facilities in this area would need to be eliminated. This plan was completed by the end of 2003. Charges were incurred in 2009 and 2008 associated with adjustments to the non-cancelable lease accrual at the Hazelwood, Missouri facility due to changes in the estimates of future expenses. Management believes that no further charges will be incurred for this activity, except for potential adjustments to non-cancelable lease liabilities as actual activity compares to assumptions made. Following is a rollforward of restructuring liabilities by type for the consolidation of St. Louis manufacturing/distribution facilities (amounts in thousands):

	Contract Termination Costs
Restructuring liabilities at January 1, 2008	\$ 827
Additions	50
Payments	(308)
Restructuring liabilities at December 31, 2008	\$ 569
Additions	92
Payments	(246)
Restructuring liabilities at December 31, 2009	\$ 415

KATY INDUSTRIES, INC. AND SUBSIDIARIES
NOTES TO CONSOLIDATED FINANCIAL STATEMENTS
As of December 31, 2009 and 2008

Note 16. SEVERANCE, RESTRUCTURING AND RELATED CHARGES – (continued)

Consolidation of Glit facilities—The Company previously approved a plan to consolidate the manufacturing facilities of its Glit business unit in order to implement a more competitive cost structure. During the year ended December 31, 2008, the Company entered into an agreement with the lessor of its abandoned Washington, Georgia facility to cancel the Company’s future lease obligations upon a one-time payment. As a result, the Company recognized \$0.4 million income for the reduction of the remaining balance of the non-cancelable lease liability. Management believes that no further charges will be incurred for this activity. Following is a rollforward of restructuring liabilities by type for the consolidation of Glit facilities (amounts in thousands):

	Contract Termination Costs
Restructuring liabilities at January 1, 2008	\$ 626
Payments	(216)
Other	<u>(410)</u>
Restructuring liabilities at December 31, 2008	\$ —
Additions	—
Payments	—
Restructuring liabilities at December 31, 2009	<u><u>\$ —</u></u>

A rollforward of all restructuring liabilities since December 31, 2007 is as follows (amounts in thousands):

	Contract Termination Costs
Restructuring liabilities at January 1, 2008	\$1,453
Additions	50
Payments	(524)
Other	<u>(410)</u>
Restructuring liabilities at December 31, 2008	\$ 569
Additions	92
Payments	<u>(246)</u>
Restructuring liabilities at December 31, 2009	<u><u>\$ 415</u></u>

These amounts relate to non-cancelable lease liabilities for abandoned facilities, net of potential sub-lease revenue. Total maximum potential amount of lease loss, excluding any sub-lease rentals, is \$1.0 million as of December 31, 2009. The Company has included \$0.6 million as an offset for sub-lease rentals. As of December 31, 2009, the Company does not anticipate any further significant severance, restructuring and other related charges in the upcoming year related to the plans discussed above.

The table below summarizes the future obligations for severance, restructuring and other related charges detailed above (amounts in thousands):

2010	\$200
2011	<u>215</u>
Total Payments	<u><u>\$415</u></u>

KATY INDUSTRIES, INC. AND SUBSIDIARIES
NOTES TO CONSOLIDATED FINANCIAL STATEMENTS
As of December 31, 2009 and 2008

Note 17. SUPPLEMENTAL BALANCE SHEET INFORMATION

The following table provides detail regarding other current assets shown on the Consolidated Balance Sheets (amounts in thousands):

	December 31,	
	2009	2008
Prepays	\$ 738	\$ 769
Non-trade miscellaneous receivables	385	434
Note receivable – Metal Truck Box	—	1,200
Insurance claim receivable	—	1,097
Other	21	16
Total	<u>\$1,144</u>	<u>\$3,516</u>

The following table provides detail regarding other assets shown on the Consolidated Balance Sheets (amounts in thousands):

	December 31,	
	2009	2008
Note receivable – Metal Truck Box	\$1,200	\$ —
Rabbi trust assets	631	669
Debt issuance costs, net	345	727
Deposits	267	264
Trade credits	229	—
Other	158	149
Total	<u>\$2,830</u>	<u>\$1,809</u>

The following table provides detail regarding accrued expenses shown on the Consolidated Balance Sheets (amounts in thousands):

	December 31,	
	2009	2008
Contingent liabilities	\$ 6,180	\$ 7,025
Advertising and rebates	2,777	2,676
Settlement payment – current	1,900	1,500
Accrued SARs	545	440
Commissions	358	363
Medical self insurance	310	292
Non-cancelable lease liabilities – restructuring	227	219
Professional services	219	534
Accrued relocation expense	210	—
Pension and postretirement benefits	209	208
Accrued utilities	179	197
Property taxes	126	29
Asset retirement obligations	105	—
Deferred rent expense	71	—
Other	836	783
Total	<u>\$14,252</u>	<u>\$14,266</u>

KATY INDUSTRIES, INC. AND SUBSIDIARIES
NOTES TO CONSOLIDATED FINANCIAL STATEMENTS
As of December 31, 2009 and 2008

Note 17. SUPPLEMENTAL BALANCE SHEET INFORMATION – (continued)

Contingent liabilities consist of accruals for estimated losses associated with environmental issues and the uninsured portion of general and product liability and workers' compensation claims.

The following table provides detail regarding other liabilities shown on the Consolidated Balance Sheets (amounts in thousands):

	December 31,	
	2009	2008
Pension and postretirement benefits	\$2,646	\$ 2,458
Settlement payment – long-term.	2,200	4,000
Deferred compensation.	1,236	1,555
Accrued income taxes – long-term	887	1,319
Asset retirement obligations	751	827
Deferred rent expense	571	—
Non-cancelable lease liabilities – restructuring	188	351
Deferred lease.	260	93
Total	\$8,739	\$10,603

Note 18. SUPPLEMENTAL CASH FLOW INFORMATION

Cash paid (refunded) for interest and income taxes during the years ended December 31 was as follows (amounts in thousands):

	2009	2008
Interest	\$790	\$1,195
Income taxes	\$(89)	\$ (93)

Item 9. CHANGES IN AND DISAGREEMENTS WITH ACCOUNTANTS ON ACCOUNTING AND FINANCIAL DISCLOSURE

None.

Item 9A(T). CONTROLS AND PROCEDURES

Evaluation of Disclosure Controls and Procedures

We maintain disclosure controls and procedures that are designed to ensure that information required to be disclosed in our filings with the Securities and Exchange Commission (“SEC”) is reported within the time periods specified in the SEC’s rules, regulations and related forms, and that such information is accumulated and communicated to our management, including the principal executive officer and principal financial officer, as appropriate, to allow timely decisions regarding required disclosure.

Pursuant to Rule 13a-15(b) under the Exchange Act, the Company carried out an evaluation, under the supervision and with the participation of our management, including the principal executive officer and principal financial officer, of the effectiveness of the design and operation of our disclosure controls and procedures (pursuant to Rule 13a-15(e) under the Exchange Act) as of the end of the period of our report. Based upon that evaluation, the principal executive officer and principal financial officer concluded that our disclosure controls and procedures are effective as of the end of the period covered by this report.

Management’s Report on Internal Control over Financial Reporting

Management is responsible for establishing and maintaining adequate control over financial reporting, as defined in Exchange Act Rule 13a-15(f). Management has assessed the effectiveness of our internal control over financial reporting as of December 31, 2009 based on criteria established in Internal Control — Integrated Framework issued by the Committee of Sponsoring Organizations of the Treadway Commission. As a result of this assessment, management concluded that, as of December 31, 2009, our internal control over financial reporting was effective in providing reasonable assurance regarding the reliability of financial reporting and the preparation of financial statements for external purposes in accordance with generally accepted accounting principles.

This annual report does not include an attestation report of our independent registered public accounting firm regarding internal control over financial reporting. Management’s report was not subject to attestation by our independent registered public accounting firm pursuant to temporary rules of the Securities and Exchange Commission that permit the company to provide only management’s report in this annual report.

Changes in Internal Control over Financial Reporting

There have been no changes in the Company’s internal control over financial reporting during the year ended December 31, 2009 that have materially affected, or are reasonably likely to materially affect the Company’s internal control over financial reporting.

Item 9B. OTHER INFORMATION

None.

PART III

Item 10. DIRECTORS, EXECUTIVE OFFICERS AND CORPORATE GOVERNANCE

Information regarding the directors of the Company is incorporated herein by reference to the information set forth under the section entitled “Election of Directors” in the Proxy Statement of Katy Industries, Inc. for its 2010 annual meeting of shareholders (the “2010 Proxy Statement”), which will be filed with the Securities and Exchange Commission pursuant to Regulation 14A not later than 120 days after December 31, 2009.

Information regarding executive officers of the Company is incorporated herein by reference to the information set forth under the section entitled “Information Concerning Directors and Executive Officers” in the 2010 Proxy Statement.

Information regarding compliance with Section 16 of the Securities Exchange Act of 1934 is incorporated herein by reference to the information set forth under the Section entitled “Section 16(a) Beneficial Ownership Reporting Compliance” in the 2010 Proxy Statement.

Information regarding the Company’s Code of Ethics is incorporated herein by reference to the information set forth under the Section entitled “Code of Ethics” in the 2010 Proxy Statement.

Item 11. EXECUTIVE COMPENSATION

Information regarding compensation of executive officers is incorporated herein by reference to the information set forth under the section entitled “Executive Compensation” in the 2010 Proxy Statement.

Item 12. SECURITY OWNERSHIP OF CERTAIN BENEFICIAL OWNERS AND MANAGEMENT AND RELATED STOCKHOLDER MATTERS

Information regarding beneficial ownership of stock by certain beneficial owners and by management of the Company is incorporated by reference to the information set forth under the section “Security Ownership of Certain Beneficial Owners” and “Security Ownership of Management” in the 2010 Proxy Statement.

Equity Compensation Plan Information

The following table represents information as of December 31, 2009 with respect to equity compensation plans under which shares of the Company’s common stock are authorized for issuance:

<u>Plan Category</u>	<u>Number of Securities to Be Issued on Exercise of Outstanding Option, Warrants and Rights (a)</u>	<u>Weighted-average Exercise Price of Outstanding Options, Warrants and Rights (b)</u>	<u>Number of Securities Remaining Available for Future Issuances Under Equity Compensation Plans (Excluding Securities Reflected in Column (a)) (c)</u>
Equity Compensation Plans			
Approved by Stockholders	284,250	\$5.66	0
Equity Compensation Plans Not			
Approved by Stockholders	<u>1,712,017</u>	\$2.20	<u>628,513</u>
Total	<u>1,996,267</u>		<u>628,513</u>

Equity Compensation Plans Not Approved by Stockholders

On June 28, 2001, the Company entered into an employment agreement with C. Michael Jacobi, President and Chief Executive Officer. To induce Mr. Jacobi to enter into the employment agreement, on June 28, 2001, the Compensation Committee of the Board of Directors approved the Katy Industries, Inc. 2001 Chief Executive Officer’s Plan. Under this plan, Mr. Jacobi was granted 978,572 stock options. Pursuant to approval by the Katy Board of Directors, the stock options granted to Mr. Jacobi under this plan were vested in March 2004. Upon Mr. Jacobi’s retirement in May 2005, all but 300,000 of these options were cancelled.

On November 21, 2002, the Board of Directors approved the 2002 Stock Appreciation Rights Plan (the “2002 SAR Plan”), authorizing the issuance of up to 1,000,000 SARs. Vesting of the SARs occurs ratably over three years from the date of issue. The 2002 SAR Plan provides limitations on redemption by holders, specifying that no more than 50% of the cumulative number of vested SARs held by an employee could be exercised in any one calendar year. The SARs expire ten years from the date of issue. In 2009, 5,000 SARs each were granted to four employees, and 3,000 SARs each were granted to four employees, with an exercise price of \$1.70. Also in 2009 and 2008, 2,000 SARs each were granted to three directors with a Stand-Alone Stock Appreciation Rights Agreement. These SARs vest immediately and have an exercise price of \$0.96 and \$1.15, respectively. At December 31, 2009, Katy had 495,267 SARs outstanding at a weighted average exercise price of \$1.19. The 2002 SAR Plan also provides that in the event of a Change in Control of the Company, all outstanding SARs may become fully vested. In accordance with the 2002 SAR Plan, a “Change in Control” is deemed to have occurred upon any of the following events: 1) a sale of 100 percent of the Company’s outstanding capital stock, as may be outstanding from time to time; 2) a sale of all or substantially all of the Company’s operating subsidiaries or assets; or 3) a transaction or series of transactions in which any third party acquires an equity ownership in the Company greater than that held by KKTY Holding Company, L.L.C. and in which Kohlberg relinquishes its right to nominate a majority of the candidates for election to the Board of Directors.

On April 21, 2008, the Company entered into an employment agreement with David J. Feldman, its President and Chief Executive Officer. To induce Mr. Feldman to enter into the employment agreement, the Compensation Committee of the Board of Directors approved the Katy Industries, Inc. 2008 Chief Executive Officer’s Plan (the “2008 Chief Executive Officer’s Plan”). Under this plan, Mr. Feldman was granted 750,000 stock options. These options vest in three equal annual installments beginning on the first anniversary of the grant date of April 21, 2008.

On October 27, 2008, the Company entered into an employment agreement with James W. Shaffer, its Vice President, Treasurer and Chief Financial Officer. To induce Mr. Shaffer to enter into the employment agreement, the Compensation Committee of the Board of Directors approved the Katy Industries, Inc. 2008 Chief Financial Officer’s Plan (the “2008 Chief Financial Officer’s Plan”). Under this plan, Mr. Shaffer was granted 125,000 stock options. These options vest in three equal annual installments beginning on the first anniversary of the grant date of October 27, 2008.

On October 27, 2008, the Company entered into an employment agreement with Edward Carter, its Vice President — Sales and Marketing. To induce Mr. Carter to enter into the employment agreement, the Compensation Committee of the Board of Directors approved the Katy Industries, Inc. 2008 Vice President — Sales and Marketing’s Plan (the “2008 Vice President — Sales and Marketing’s Plan”). Under this plan, Mr. Carter was granted 125,000 stock options. These options vest in three equal annual installments beginning on the first anniversary of the grant date of October 27, 2008.

On April 13, 2009, the Company entered into an employment agreement with Robert D. Redmond, its Vice President — Operations. To induce Mr. Redmond to enter into the employment agreement, the Compensation Committee of the Board of Directors approved the Katy Industries, Inc. 2009 Vice President — Operations’ Plan (the “2009 Vice President — Operations’ Plan”). Under this plan, Mr. Redmond was granted 125,000 stock options. These options vest in three equal annual installments beginning on the first anniversary of the grant date of April 13, 2009.

Item 13. CERTAIN RELATIONSHIPS AND RELATED TRANSACTIONS, AND DIRECTOR INDEPENDENCE

Information regarding certain relationships and related transactions with management is incorporated herein by reference to the information set forth under the section entitled “Executive Compensation” in the 2010 Proxy Statement.

Item 14. PRINCIPAL ACCOUNTING FEES AND SERVICES

Information regarding principal accountant fees and services is incorporated herein by reference to the information set forth under the section entitled “Proposal 2 — Ratification of the Independent Public Auditors” in the 2010 Proxy Statement.

PART IV

Item 15. EXHIBITS, FINANCIAL STATEMENT SCHEDULES

(a) 1. Financial Statements

The following financial statements of the Company are set forth in Part II, Item 8, of this Form 10-K:

- Consolidated Balance Sheets as of December 31, 2009 and 2008
- Consolidated Statements of Operations for the years ended December 31, 2009 and 2008
- Consolidated Statements of Stockholders' Equity for the years ended December 31, 2009 and 2008
- Consolidated Statements of Cash Flows for the years ended December 31, 2009 and 2008
- Notes to Consolidated Financial Statements

2. Exhibits

The exhibits filed with this report are listed on the "Exhibit Index."

SIGNATURES

Pursuant to the requirements of Section 13 or 15 (d) of the Securities Exchange Act of 1934, the registrant has duly caused this report to be signed on its behalf by the undersigned, thereunto duly authorized.

Dated: March 25, 2010

KATY INDUSTRIES, INC.
Registrant

/S/ David J. Feldman
David J. Feldman
President and Chief Executive Officer

/S/ James W. Shaffer
James W. Shaffer
Vice President, Treasurer and Chief Financial
Officer

POWER OF ATTORNEY

Each person signing below appoints David J. Feldman and James W. Shaffer, or either of them, his attorneys-in-fact for him in any and all capacities, with power of substitution, to sign any amendments to this report, and to file the same with any exhibits thereto and other documents in connection therewith, with the Securities and Exchange Commission.

Pursuant to the requirements of the Securities Exchange Act of 1934, this report has been signed below by the following persons on behalf of the registrant and in the capacities indicated as of this 25th day of March, 2010.

Signature	Title
<u>/S/ William F. Andrews</u> William F. Andrews	Chairman of the Board and Director
<u>/S/ David J. Feldman</u> David J. Feldman	President, Chief Executive Officer and Director (Principal Executive Officer)
<u>/S/ James W. Shaffer</u> James W. Shaffer	Vice President, Treasurer and Chief Financial Officer (Principal Financial and Accounting Officer)
<u>/S/ Christopher Anderson</u> Christopher Anderson	Director
<u>/S/ Robert M. Baratta</u> Robert M. Baratta	Director
<u>/S/ Daniel B. Carroll</u> Daniel B. Carroll	Director
<u>/S/ Wallace E. Carroll, Jr.</u> Wallace E. Carroll, Jr.	Director
<u>/S/ Samuel P. Frieder</u> Samuel P. Frieder	Director
<u>/S/ Christopher Lacovara</u> Christopher Lacovara	Director
<u>/S/ Shant Mardirossian</u> Shant Mardirossian	Director

KATY INDUSTRIES, INC.
EXHIBIT INDEX
DECEMBER 31, 2009

Exhibit Number	Exhibit Title	Page
2	Preferred Stock Purchase and Recapitalization Agreement, dated as of June 2, 2001 (incorporated by reference to Annex B to the Company's Proxy Statement on Schedule 14A filed June 8, 2001).	*
3.1	The Amended and Restated Certificate of Incorporation of the Company (incorporated by reference to Exhibit 3.1 of the Company's Current Report on Form 8-K on July 13, 2001).	*
3.2	The By-laws of the Company, as amended (incorporated by reference to Exhibit 3.1 of the Company's Quarterly Report on Form 10-Q filed May 15, 2001).	*
10.1	Amended and Restated Katy Industries, Inc. 1995 Long-Term Incentive Plan (incorporated by reference to Exhibit 10.1 of the Company's Quarterly Report on Form 10-Q filed August 9, 2006).	*
10.2	Katy Industries, Inc. Non-Employee Director Stock Option Plan (incorporated by reference to Exhibit 4.1 of the Company's Registration Statement on Form S-8 filed June 21, 1995).	*
10.3	Katy Industries, Inc. Supplemental Retirement and Deferral Plan effective as of June 1, 1995 (incorporated by reference to Exhibit 10.4 to Company's Annual Report on Form 10-K filed April 1, 1996).	*
10.4	Katy Industries, Inc. Directors' Deferred Compensation Plan effective as of June 1, 1995 (incorporated by reference to Exhibit 10.5 to Company's Annual Report on Form 10-K filed April 1, 1996).	*
10.5	Employment Agreement dated as of April 21, 2008 between David J. Feldman and the Company (incorporated by reference to Exhibit 10.1 to the Company's Quarterly Report on Form 10-Q filed May 13, 2008).	*
10.6	Katy Industries, Inc. 2008 Chief Executive Officer's Plan (incorporated by reference to Exhibit 10.2 to the Company's Quarterly Report on Form 10-Q filed May 13, 2008).	*
10.7	CFO Employment Offer Letter dated as of October 27, 2008 between James W. Shaffer and the Company (incorporated by reference to Exhibit 99.1 to the Company's Current Report on Form 8-K filed October 27, 2008).	*
10.8	Vice President, Sales and Marketing Employment Offer Letter dated as of October 27, 2008 between Edward Carter and the Company (incorporated by reference to Exhibit 99.2 to the Company's Current Report on Form 8-K filed October 27, 2008).	*
10.9	Katy Industries, Inc. 2008 Chief Financial Officer's Plan, (incorporated by reference to Exhibit 10.9 to the Company's Annual Report on Form 10-K dated March 31, 2009).	*
10.10	Katy Industries, Inc. 2008 Vice President, Sales and Marketing's Plan, (incorporated by reference to Exhibit 10.10 to the Company's Annual Report on Form 10-K dated March 31, 2009).	*
10.12	Katy Industries, Inc. 2009 Vice President, Operations' Plan, (incorporated by reference to Exhibit 10.2 to the Company's Quarterly Report on Form 10-Q filed August 13, 2009).	*
10.13	Katy Industries, Inc. 2002 Stock Appreciation Rights Plan, dated November 21, 2002, (incorporated by reference to Exhibit 10.17 to the Company's Annual Report on Form 10-K dated April 15, 2003).	*
10.14	Katy Industries, Inc. Executive Bonus Plan dated December 2001 (incorporated by reference to Exhibit 10.18 to the Company's Annual Report on Form 10-K dated April 15, 2005).	*

Exhibit Number	Exhibit Title	Page
10.15	Second Amended and Restated Loan Agreement dated as of November 30, 2007 with Bank of America, (incorporated by reference to Exhibit 10.1 to the Company's Current Report on Form 8-K filed December 5, 2007).	*
10.16	Amended and Restated Katy Industries, Inc. 1997 Long-Term Incentive Plan (incorporated by reference to Exhibit 10.20 of the Company's Quarterly Report on Form 10-Q filed August 9, 2006).	*
10.17	Stand-Alone Stock Appreciation Rights Agreement (incorporated by reference to Exhibit 99.1 of the Company's Current Report on Form 8-K filed September 6, 2006).	*
10.18	Director Compensation Arrangements	62
21	Subsidiaries of Registrant	63
23	Consent of Independent Registered Public Accounting Firm	64
31.1	CEO Certification pursuant to Securities Exchange Act Rule 13a-14, as adopted pursuant to Section 302 of the Sarbanes-Oxley Act of 2002.	65
31.2	CFO Certification pursuant to Securities Exchange Act Rule 13a-14, as adopted pursuant to Section 302 of the Sarbanes-Oxley Act of 2002.	66
32.1	CEO Certification required by 18 U.S.C. Section 1350, as adopted pursuant to Section 906 of the Sarbanes-Oxley Act of 2002.	67#
32.2	CFO Certification required by 18 U.S.C. Section 1350, as adopted pursuant to Section 906 of the Sarbanes-Oxley Act of 2002.	68#

* Indicates incorporated by reference.

These certifications are being furnished solely to accompany this report pursuant to 18 U.S.C. Section 1350, and are not being filed for purposes of Section 18 of the Securities and Exchange Act of 1934, as amended, and are not to be incorporated by reference into any filing of Katy Industries, Inc. whether made before or after the date hereof, regardless of any general incorporation language in such filing.

Exhibit 10.18

Katy Industries, Inc.
Director Compensation Arrangements

1. Retainer
 - a. Each director receives a \$10,000 annual retainer, paid annually in advance.
 - b. Each director receives the cash equivalent of 2,000 shares of the Company's common stock at the closing stock price the day prior to the annual meeting.
 - c. The chair of the Compensation Committee and the chair of the Audit Committee each receive an additional \$6,000 annual retainer, paid annually in advance.
2. Meeting Fees
 - a. Each director is paid \$2,500 for each full meeting of the board of directors he or she attends in person and \$1,000 for each full meeting of the board of directors he or she attends telephonically.
 - b. Each director is paid \$1,000 for each full committee meeting of the board of directors he or she attends in person and \$500 for each full committee meeting of the board of directors he or she attends telephonically.
3. Stock Appreciation Rights
 - a. Each director receives an annual stock appreciation right (SAR) grant of 2,000 stock appreciation rights at the May meeting of the board of directors each year. The exercise price is the fair market value on the date of grant. The director may exercise these stock appreciation rights at any time during the ten years from the date of grant.
4. Meeting Expenses
 - a. Katy reimburses directors for their expenses incurred in attending meetings of the board of director and committee meetings of the board of directors.
5. Deferred Compensation Plan
 - a. Each director may defer directors' fees, retainers and other compensation paid for services as a director until the later of the director's attainment of age 62 or ceasing to be a director. Each director has 30 days before the beginning of a Plan Year (as defined in the Directors' Deferred Compensation Plan) in which to elect to participate in the Directors' Deferred Compensation Plan. Directors may invest these amounts in one or more investment alternatives offered by Katy. Directors may elect to receive distributions of deferred amounts in a lump sum or five annual installments.

Note: Class II directors and those directors that are also officers do not receive the compensation described in this section for their service on the Board of Directors.

Exhibit 21

SUBSIDIARIES OF REGISTRANT

The following list sets forth subsidiaries of Katy Industries, Inc. as of March 25, 2010, as well as operating divisions of such subsidiaries, with successive indentation indicating parent/subsidiary relationships of such subsidiaries. The state of jurisdiction or incorporation of each such subsidiary is stated in parentheses. All such subsidiaries are 100% owned, directly or indirectly, by Katy Industries, Inc. Omitted subsidiaries do not, in the aggregate, constitute a “significant subsidiary”.

American Gage & Machine Company (Illinois)

 WP Liquidating Corp. (Illinois) Ashford Holding Corp. (Delaware)

 Continental Commercial Products, LLC (Delaware)

 Continental (division)

 Contico (division)

 Container (division)

 Disco (division)

 Gemtex (division)

 Glit (division)

 Wilco (division)

 CEH Limited (U.K.)

GCW, Inc. (Delaware)

HPMI, Inc. (Delaware)

Hermann Lowenstein, Inc. (Delaware)

Katy International, Inc. (British Virgin Islands)

Katy Teweh Inc. (Delaware)

Wabash Holding Corp. (Delaware)

W.J. Smith Wood Preserving Company (Texas)

WII, Inc. (Delaware)

 TTI Holdings, Inc. (Delaware)

2155735 Ontario, Inc. (Canada)

 Glit/Gemtex, Ltd. (Canada)

 Gemtex Canada (Division)

 KMG Canada (Division)

Exhibit 23

CONSENT OF INDEPENDENT REGISTERED PUBLIC ACCOUNTING FIRM

We hereby consent to the incorporation by reference in the Registration Statement on Form S-8 (No's. 333-78709, 33-60443, and 33-60449) of Katy Industries, Inc. (the "Company") of our report dated March 25, 2010, on the consolidated financial statements of the Company for the years ended December 31, 2009 and 2008, which appears in the Company's Annual Report on Form 10-K for the year ended December 31, 2009.

/s/ UHY LLP

St. Louis, Missouri

March 25, 2010

Exhibit 31.1

CERTIFICATION PURSUANT TO
RULE 13A-14 OF THE SECURITIES EXCHANGE ACT OF 1934,
AS ADOPTED PURSUANT TO
SECTION 302 OF THE SARBANES-OXLEY ACT OF 2002

I, David J. Feldman, certify that:

1. I have reviewed this Annual Report on Form 10-K of Katy Industries, Inc. (the “registrant”) for the year ended December 31, 2009;
2. Based on my knowledge, this annual report does not contain any untrue statement of a material fact or omit to state a material fact necessary to make the statements made, in light of the circumstances under which such statements were made, not misleading with respect to the period covered by this report;
3. Based on my knowledge, the financial statements, and other financial information included in this annual report, fairly present in all material respects the financial condition, results of operations and cash flows of the registrant as of, and for, the periods presented in this annual report;
4. The registrant’s other certifying officer and I are responsible for establishing and maintaining disclosure controls and procedures (as defined in Exchange Act Rules 13a-15(e) and 15d-15(e)) and internal control over financial reporting (as defined in Exchange Act Rules 13a-15(f) and 15d-15(f)) for the registrant and have:
 - (a) Designed such disclosure controls and procedures, or caused such disclosure controls and procedures to be designed under our supervision, to ensure that material information relating to the registrant, including its consolidated subsidiaries, is made known to us by others within those entities, particularly during the period in which this report is being prepared;
 - (b) Designed such internal control over financial reporting, or caused such internal control over financial reporting to be designed under our supervision, to provide reasonable assurance regarding the reliability of financial reporting and the preparation of financial statements for external purposes in accordance with generally accepted accounting principles;
 - (c) Evaluated the effectiveness of the registrant’s disclosure controls and procedures and presented in this report our conclusions about the effectiveness of the disclosure controls and procedures, as of the end of the period covered by this report based on such evaluation; and
 - (d) Disclosed in this report any change in the registrant’s internal control over financial reporting that occurred during the registrant’s most recent fiscal quarter (the registrant’s fourth fiscal quarter in the case of an annual report) that has materially affected, or is reasonably likely to materially affect, the registrant’s internal control over financial reporting; and
5. The registrant’s other certifying officer and I have disclosed, based on our most recent evaluation of internal control over financial reporting, to the registrant’s auditors and the audit committee of registrant’s board of directors (or persons performing the equivalent function):
 - (a) All significant deficiencies and material weaknesses in the design or operation of internal control over financial reporting which are reasonably likely to adversely affect the registrant’s ability to record, process, summarize and report financial information; and
 - (b) Any fraud, whether or not material, that involves management or other employees who have a significant role in the registrant’s internal control over financial reporting.

Date: March 25, 2010

By: /s/ David J. Feldman
David J. Feldman
Chief Executive Officer

Exhibit 31.2

CERTIFICATION PURSUANT TO
RULE 13A-14 OF THE SECURITIES EXCHANGE ACT OF 1934,
AS ADOPTED PURSUANT TO
SECTION 302 OF THE SARBANES-OXLEY ACT OF 2002

I, James W. Shaffer, certify that:

1. I have reviewed this Annual Report on Form 10-K of Katy Industries, Inc. (the “registrant”) for the year ended December 31, 2009;
2. Based on my knowledge, this annual report does not contain any untrue statement of a material fact or omit to state a material fact necessary to make the statements made, in light of the circumstances under which such statements were made, not misleading with respect to the period covered by this report;
3. Based on my knowledge, the financial statements, and other financial information included in this annual report, fairly present in all material respects the financial condition, results of operations and cash flows of the registrant as of, and for, the periods presented in this annual report;
4. The registrant’s other certifying officer and I are responsible for establishing and maintaining disclosure controls and procedures (as defined in Exchange Act Rules 13a-15(e) and 15d-15(e)) and internal control over financial reporting (as defined in Exchange Act Rules 13a-15(f) and 15d-15(f)) for the registrant and have:
 - (a) Designed such disclosure controls and procedures, or caused such disclosure controls and procedures to be designed under our supervision, to ensure that material information relating to the registrant, including its consolidated subsidiaries, is made known to us by others within those entities, particularly during the period in which this report is being prepared;
 - (b) Designed such internal control over financial reporting, or caused such internal control over financial reporting to be designed under our supervision, to provide reasonable assurance regarding the reliability of financial reporting and the preparation of financial statements for external purposes in accordance with generally accepted accounting principles;
 - (c) Evaluated the effectiveness of the registrant’s disclosure controls and procedures and presented in this report our conclusions about the effectiveness of the disclosure controls and procedures, as of the end of the period covered by this report based on such evaluation; and
 - (d) Disclosed in this report any change in the registrant’s internal control over financial reporting that occurred during the registrant’s most recent fiscal quarter (the registrant’s fourth fiscal quarter in the case of an annual report) that has materially affected, or is reasonably likely to materially affect, the registrant’s internal control over financial reporting; and
5. The registrant’s other certifying officer and I have disclosed, based on our most recent evaluation of internal control over financial reporting, to the registrant’s auditors and the audit committee of registrant’s board of directors (or persons performing the equivalent function):
 - (a) All significant deficiencies and material weaknesses in the design or operation of internal control over financial reporting which are reasonably likely to adversely affect the registrant’s ability to record, process, summarize and report financial information; and
 - (b) Any fraud, whether or not material, that involves management or other employees who have a significant role in the registrant’s internal control over financial reporting.

Date: March 25, 2010

By: /s/ James W. Shaffer
James W. Shaffer
Chief Financial Officer

Exhibit 32.1

CERTIFICATION PURSUANT TO
18 U.S.C. SECTION 1350,
AS ADOPTED PURSUANT TO
SECTION 906 OF THE SARBANES-OXLEY ACT OF 2002

In connection with the Annual Report on Form 10-K of Katy Industries, Inc. (the "Company") for the period ending December 31, 2009 as filed with the Securities and Exchange Commission on the date hereof (the "Report"), I, David J. Feldman, Chief Executive Officer of the Company, certify, pursuant to 18 U.S.C. section 1350, as adopted pursuant to section 906 of the Sarbanes-Oxley Act of 2002, that:

- (1) the Report fully complies with the requirements of Section 13(a) or 15(d) of the Securities Exchange Act of 1934; and
- (2) the information contained in the Report fairly presents, in all material respects, the financial condition and results of operations of the Company.

/s/ David J. Feldman
David J. Feldman
Chief Executive Officer
March 25, 2010

The foregoing certification is being furnished solely to accompany this report pursuant to 18 U.S.C. Section 1350, and is not being filed for purposes of Section 18 of the Securities and Exchange Act of 1934, as amended, and is not to be incorporated by reference into any filing of the Company whether made before or after the date hereof, regardless of any general incorporation language in such filing. A signed original of this written statement required by Section 906, or other document authenticating, acknowledging, or otherwise adopting the signature that appears in typed form within the electronic version of this written statement required by Section 906, has been provided to the Company and will be retained by the Company and furnished to the Securities and Exchange Commission or its staff upon request.

Exhibit 32.2

CERTIFICATION PURSUANT TO
18 U.S.C. SECTION 1350,
AS ADOPTED PURSUANT TO
SECTION 906 OF THE SARBANES-OXLEY ACT OF 2002

In connection with the Annual Report on Form 10-K of Katy Industries, Inc. (the "Company") for the period ending December 31, 2009 as filed with the Securities and Exchange Commission on the date hereof (the "Report"), I, James W. Shaffer, Chief Financial Officer of the Company, certify, pursuant to 18 U.S.C. section 1350, as adopted pursuant to section 906 of the Sarbanes-Oxley Act of 2002, that:

- (1) the Report fully complies with the requirements of Section 13(a) or 15(d) of the Securities Exchange Act of 1934, as amended; and
- (2) the information contained in the Report fairly presents, in all material respects, the financial condition and results of operations of the Company.

/s/ James W. Shaffer

James W. Shaffer
Chief Financial Officer
March 25, 2010

The foregoing certification is being furnished solely to accompany this report pursuant to 18 U.S.C. Section 1350, and is not being filed for purposes of Section 18 of the Securities and Exchange Act of 1934, as amended, and is not to be incorporated by reference into any filing of the Company whether made before or after the date hereof, regardless of any general incorporation language in such filing. A signed original of this written statement required by Section 906, or other document authenticating, acknowledging, or otherwise adopting the signature that appears in typed form within the electronic version of this written statement required by Section 906, has been provided to the Company and will be retained by the Company and furnished to the Securities and Exchange Commission or its staff upon request.

Corporate Information

Board of Directors

Christopher W. Anderson⁽¹⁾⁽³⁾
Partner, Kohlberg & Co.

William F. Andrews⁽²⁾⁽⁴⁾
Chairman of the Board

Robert M. Baratta
Former President and
Chief Executive Officer

Daniel B. Carroll⁽²⁾⁽⁴⁾
Private Investor

Wallace E. Carroll, Jr.⁽³⁾
Chairman of the Board, CRL, Inc.

David J. Feldman⁽¹⁾
President and Chief Executive Officer

Samuel P. Freider⁽⁴⁾
Co-Managing Partner, Kohlberg & Co.

Christopher Lacovara^{(1) (2) (3)}
Co-Managing Partner, Kohlberg & Co.

Shant Mardirossian
Partner and Chief Financial Officer,
Kohlberg & Co.

Corporate Management Committee

David J. Feldman
President and Chief Executive Officer

Edward D. Carter
Vice President, Sales & Marketing

Joseph E. Mata
Vice President, Human Resources

Robert D. Redmond
Vice President, Operations

James W. Shaffer
Vice President, Treasurer,
Chief Financial Officer and Secretary

Headquarters

305 Rock Industrial Park Dr.
Bridgeton, MO 63044
Telephone: 314-656-4321
Fax: 314-656-4398

Shares Listed

Common—Over the Counter Bulletin
Board (“OTC BB”) (Symbol: KATY).

Investor Relations

Stockholders and all prospective
investors are welcome to call, write or
visit our website (www.katyindustries.com) with questions or requests for
additional information.

Contact: James W. Shaffer
Vice President, Treasurer,
Chief Financial Officer and Secretary
Katy Industries, Inc.
305 Rock Industrial Park Dr.
Bridgeton, MO 63044
Telephone: 314-656-4321

Independent Registered Public Accounting Firm

UHY LLP
15 Sunnen Drive, Suite 108
St. Louis, Missouri 63143-3819

Principal Outside Counsel

DLA Piper LLP (US)
One Atlanta Center
1201 West Peachtree Street,
Suite 2800
Atlanta, GA 30309

SEC Certification

We have filed, as exhibits to the
Annual Report on Form 10-K, the
certifications of our principal executive
officer and principal financial officer
required under Section 302 of the
Sarbanes-Oxley Act of 2002 to be
filed with the Securities and Exchange
Commission regarding the quality of
our public disclosure.

Stockholder Inquiry Service

Correspondence concerning stockholder
accounts should be directed to the
Transfer Agent and Registrar:

BNY Mellon
P.O. Box 358015
Pittsburgh, PA 15252-8015
or
480 Washington Boulevard
Jersey City, NJ 07310-1900

Telephone: 866-204-9010
TDD for hearing impaired: 800-231-5469
Foreign Shareowners: 201-680-6578
TDD Foreign Shareowners: 201-680-6610

www.bnymellon.com/shareowner/isd

Stockholder Information

Additional copies of this Annual Report
or our proxy statement and Form 10-K
filed with the Securities and Exchange
Commission are available without
charge to interested stockholders upon
request to:

James W. Shaffer
Vice President, Treasurer,
Chief Financial Officer and Secretary

or by accessing Katy’s website,
www.katyindustries.com.
Select “Investor Relations” from
the main menu.

Forward-Looking Statements

The statements contained in this
Annual Report that are not historical in
nature are forward-looking statements.
Forward-looking statements are not
guarantees since there are inherent
difficulties in predicting future results,
and actual results could differ materially
from those expressed or implied in the
forward-looking statements. For a list
of major factors that could cause actual
results to differ materially from those
projected, refer to Katy Industries’ 2009
Form 10-K, filed with the Securities and
Exchange Commission.

(1) Executive Committee (2) Audit Committee (3) Compensation Committee (4) Nominating and Governance Committee This Annual Report should be read
in conjunction with Katy Industries’ proxy statement and the Form 10-K. Copies of the proxy statement and Form 10-K may be obtained online at www.katyindustries.com.

Our Business Units At a Glance

Continental Manufacturing Company

Manufacturer and distributor of janitorial and food service equipment and supplies.

Markets

Janitorial/Sanitary
Maintenance
Food Service

305 Rock Industrial Park Drive
Bridgeton, MO 63044
800-325-1051



Contico Container

Manufacturer and distributor of plastic industrial storage drums, pails and bins.

Markets

Commercial/
Industrial Storage

15510 Blackburn Avenue
Norwalk, CA 90650
800-843-7360



Glit/Microtron

Manufacturer and distributor of non-woven floor maintenance, hand pads and roof ventilation products.

Markets

Sanitary
Maintenance
Food Service
Construction

809 Broad Street
Wrens, GA 30833
800-325-1051



Wilco Professional Cleaning Products

Manufacturer and distributor of mops, brooms and brushes.

Markets

Sanitary
Maintenance
Food Service

3760 Southside
Industrial Parkway
Atlanta, GA 30354
800-325-1051



Disco

Manufacturer and distributor of filtration, cleaning and specialty products for the food service industry.

Markets

Food Service
Sanitary
Maintenance

1895 Brannan Road
McDonough, GA 30253
800-325-1051



Contico

Manufacturer and distributor of plastic consumer storage, home and automotive products.

Markets

Home and Automotive
Consumer Storage

305 Rock Industrial Park Drive
Bridgeton, MO 63044
800-831-7077



Gemtex

Manufacturer and distributor of resin fiber disks and coated abrasives.

Markets

Automotive
Home Improvement
Industrial
OEM

60 Belfield Road
Toronto, Ontario, Canada
M9W 1G1
800-387-5100

