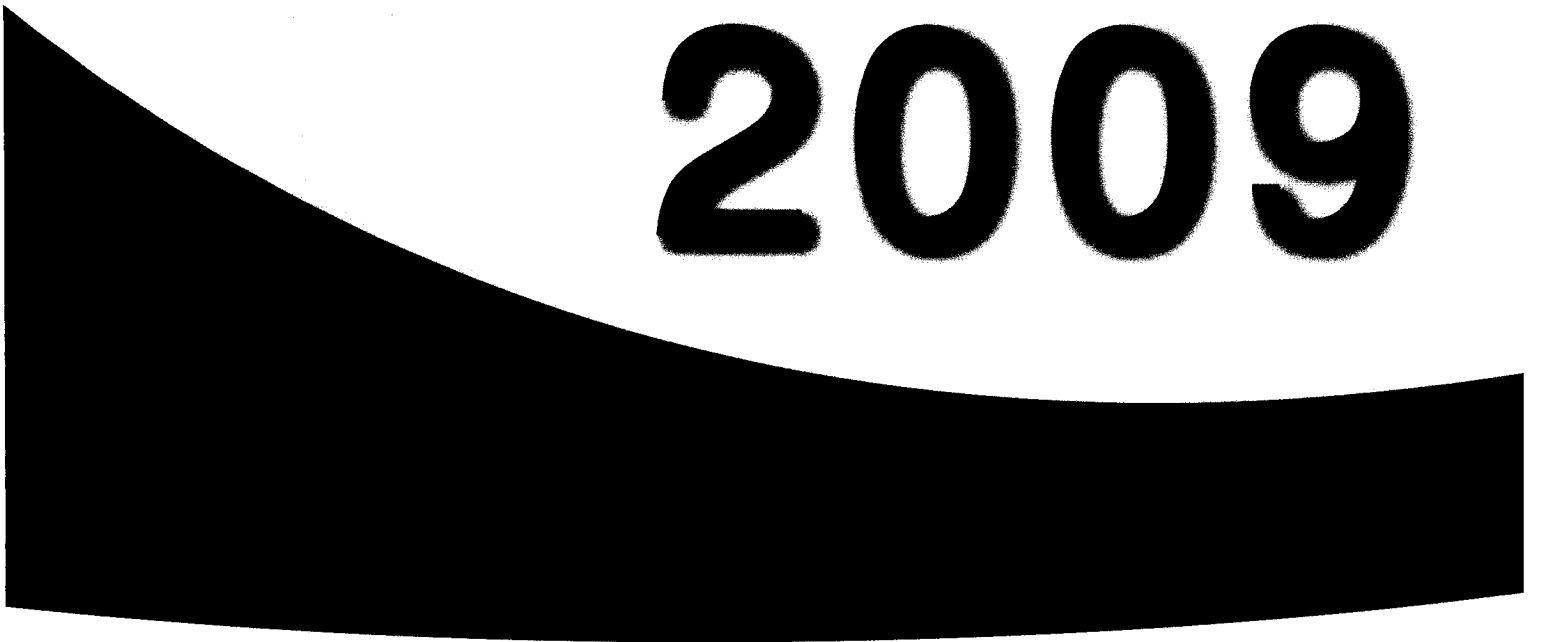


Annual Report

2009



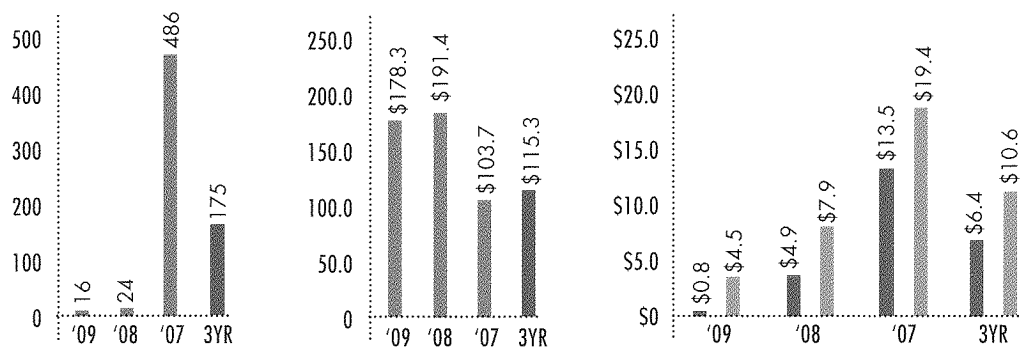
FINANCIAL HIGHLIGHTS

| OPERATIONS | 2009 | 2008 | 2007 | 3 YR AVG |
|---------------------------------|----------------|----------------|----------------|---------------|
| Net Income | \$ 800,570 | \$ 4,834,900 | \$ 13,532,838 | \$ 6,389,436 |
| *EBDDT | \$ 4,531,135 | \$ 7,924,025 | \$ 19,390,631 | \$ 10,615,264 |
| BASIC EARNINGS PER SHARE | | | | |
| Net Income | \$ 0.14 | \$ 0.84 | \$ 2.37 | \$ 1.12 |
| *EBDDT | \$ 0.79 | \$ 1.38 | \$ 3.39 | \$ 1.85 |
| FINANCIAL POSITIONS | | | | |
| Cash | \$ 266,669 | \$ 851,552 | \$ 11,251,376 | |
| Investment Securities | \$ 4,966,864 | \$ 5,260,868 | \$ 10,193,094 | |
| Income Properties | \$ 126,396,631 | \$ 123,114,074 | \$ 110,711,749 | |
| Long-Term Debt | \$ 6,239,967 | \$ 6,532,420 | \$ 6,807,388 | |
| Shareholders Equity | \$ 118,033,579 | \$ 117,814,307 | \$ 116,670,608 | |
| ACRES SOLD | 16 | 24 | 486 | 175 |
| AVG PRICE PER ACRE** | \$ 178,274 | \$ 191,390 | \$ 103,750 | \$ 115,322 |
| Commercial | \$ 178,274 | \$ 191,390 | \$ 229,675 | \$ 214,744 |
| Residential | \$ -- | \$ -- | \$ 47,087 | \$ 47,087 |



AVERAGE ACRES SOLD PRICE/ACRE** NET INCOME / EBDDT

(\$ in thousands) (\$ in millions)



* EBDDT - Earnings Before Depreciation, Amortization, and Deferred Taxes. EBDDT is not a measure of operating results or cash flows from operating activities as defined by U.S. generally accepted accounting principles. Further, EBDDT is not necessarily indicative of cash availability to fund cash needs and should not be considered as an alternative to cash flow as a measure of liquidity. The Company believes, however, that EBDDT provides relevant information about operations and is useful, along with net income, for an understanding of the Company's operating results.

EBDDT is calculated by adding depreciation, amortization, and deferred income taxes to net income as they represent non-cash changes.

** Average price per acre sold in any year is affected by the relative mix and type of commercial and residential land and does not include the amount of wetlands sold in any year.

*“Those who cannot learn from history
are doomed to repeat it.”*

- George Santayana

TO OUR SHAREHOLDERS

*On the 10-year anniversary of our unique business plan,
we thought it appropriate to share with you a thorough
history of the plan and how it came to be.*

THE GENESIS OF OUR BUSINESS PLAN

In 1990, the real estate industry experienced a significant downturn. For the Company, a combination of substantial debt, weak sales, and a lack of stable revenue to fund real estate operations produced a loss before income taxes of over \$12 million. This significant reversal, coupled with the historical knowledge that adverse business cycles typically occur one or more times each decade, was a catalyst for change.

After considering a range of options and the long-term implications of each, the Company elected to liquidate its real estate development operations, including an exit from the home building, residential community, and commercial development businesses. This orderly liquidation allowed the Company to reduce its risk exposure and debt, which totaled \$43 million at December 31, 1990.

The Company focused on obtaining valuable entitlements for its land, such as major roads, a new I-95 interchange in the middle of our land holdings, and valuable land-use approvals for thousands of residential units and millions of square feet of commercial uses located predominantly in our LPGA International Development of Regional Impact (DRI).

The Company partnered with the State of Florida, County of Volusia, City of Daytona Beach, and the Ladies Professional Golf Association to minimize its capital investment, risk, and potential exposure during a future adverse business cycle.

This strategy of obtaining improved entitlements and infrastructure greatly increased our land values, and our sale of select properties to targeted commercial and residential developers proved profitable, reducing our debt exposure from \$43 million as of December 31, 1990 to \$10 million as of December 31, 2000.

While this strategy significantly increased our land values and reduced our risk exposure, as a result of the decline in indebtedness, it did not provide the stable income source needed to sustain operations during periods of little or no sales activity, as we are experiencing today.

The solution for this missing component in our strategy arose out of two events in the late 1990's: (1) the sale of our citrus operations, which generated significant capital; and (2) our "spin off" from our 80% shareholder Baker Fentress & Company, which ended the Company's long-term liquidation of its land holdings and subsequent distribution of a significant portion of its income to shareholders.

A NEW OPERATING PLAN IS ADOPTED IN 2000

Under a new ownership structure, the Company adopted a new business plan that would merge the benefits of the then current strategy of: (1) obtaining enhanced entitlements and infrastructure; and (2) marketing these high-value lands to targeted end users; with the additional concept of, (3) converting the sales of long-held agricultural lands into investments in geographically dispersed income-producing real estate using the like-kind exchange process under Section 1031 of the Internal Revenue Code to defer paying ordinary income taxes.

No longer was the Company liquidating its land holdings, but instead it was exchanging portions of its agricultural properties into a growing portfolio of income-producing assets that would provide stable income.

- *obtaining enhanced entitlements and infrastructure*
- *marketing these high-value lands to targeted end users*
- *converting the sales of long-held agricultural lands into investments in geographically dispersed income-producing properties using the like-kind exchange process to defer paying ordinary income taxes*

OUR ACQUISITION PROFILE UTILIZED THE FOLLOWING CRITERIA

- Single tenant, stand-alone properties
- Long-term double and triple net leases (limiting property management responsibilities)
- Adjacent to interstate interchanges, or at the intersection of, or on major thoroughfare roads
- Credit-quality tenants
- Prime locations in growth areas
- Geographic dispersion initially in central and north Florida, later expanding into Georgia, and North Carolina



The Company selected net-lease credit-tenant properties as the foundation of our portfolio because they have a greater likelihood of producing stable income during difficult economic periods than other higher risk investments. The Company has experienced no defaults in its income property portfolio over the 10-year period we have used this strategy.

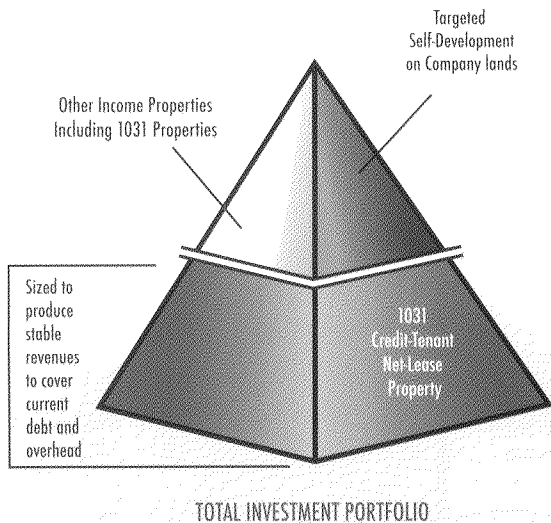


The Company has acquired 26 net-lease credit-tenant retail properties. This \$120 million debt-free portfolio generates annual revenues in excess of \$9.3 million.



Factoring in the benefits of an approximate 38.6% tax deferral, the effective rate of return on our investment of 1031 funds equates to an annual average of 12.5%, a return that has outperformed many other types of investments.

A PLACE FOR SELF-DEVELOPMENT IN THE PORTFOLIO



Our initial self-development project, a partially occupied flex office development, was completed in 2008. Our second self-development project, a Class "A" office building was completed in 2009, and is substantially occupied by two long-term lease tenants.

The vacancy risk associated with the unoccupied portions of our two self-development projects is offset by the recurring cash flow of our 1031 net-lease credit-tenant properties.

The Company's investment portfolio is not limited to net-lease credit-tenant 1031 investments, but these properties function as a strong foundation to build upon. The business plan included diversification into select self-development projects after our net-lease credit-tenant portfolio had grown to over \$90 million.

The Company believes that "targeted" self-development projects, such as office, warehouse, and build-to-suit leaseback projects located on Company owned lands makes good business sense when combined with a strong foundation of 1031 net-lease credit-tenant properties.



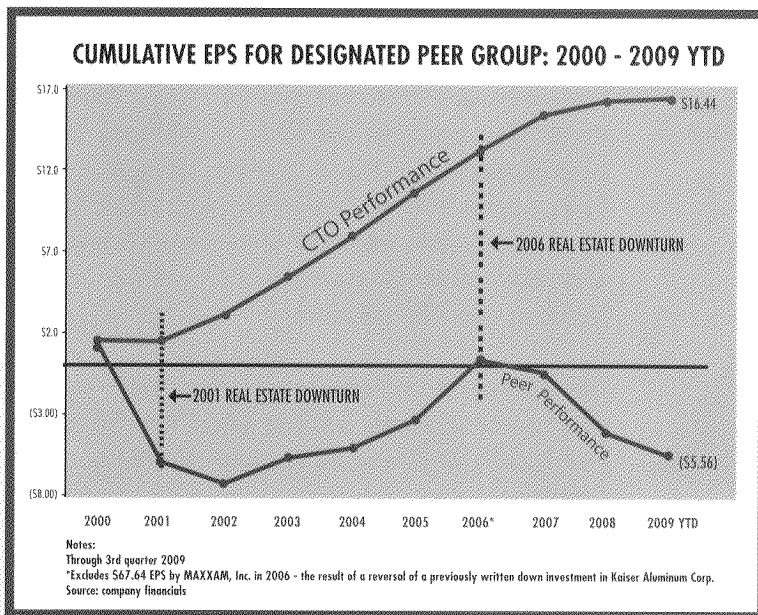
"The proof is in the pudding"

- Miguel de Cervantes

OUR BUSINESS PLAN AND STRATEGIES ARE PROVEN

The effectiveness of our plan to provide asset growth while protecting your investment is evident when compared to **our peers that do not employ similar strategies**. Tracking the prior 10-year cumulative earnings per share performance through December 31, 2009 and focusing on the final three years (after the "real estate bubble burst") underscores the value of our business plan. The plan not only serves as a hedge against losses, but places the Company in the enviable position of not being forced to sell valuable assets at greatly reduced prices as a means of survival.

Shareholder equity increased from \$48 million to \$118 million, a gain of 146% over the same period.



Over the last 10 years, Consolidated Tomoka has delivered higher cumulative earnings per share than the average of its industry peers.

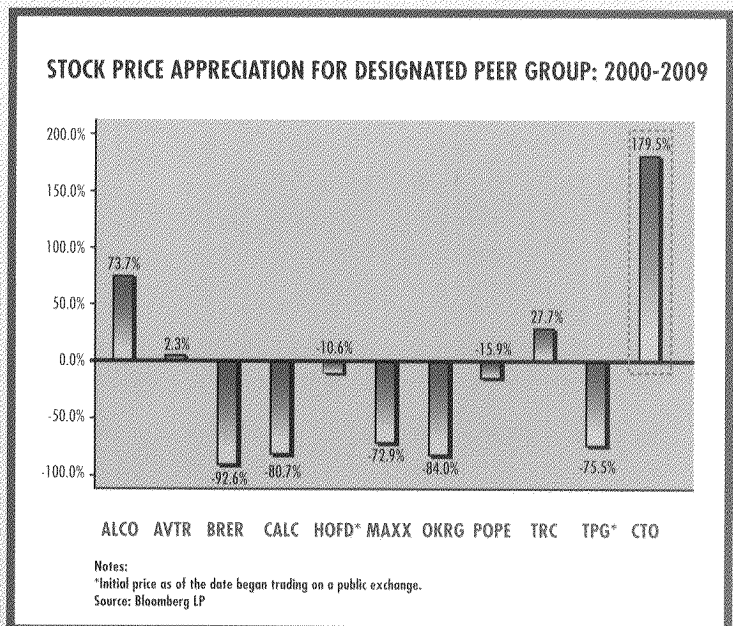
The stable trend in positive earnings has been facilitated by the Section 1031 strategy.

An additional measure of the effectiveness of our business plan to protect shareholder value is a 10-year comparison through December 31, 2009 of the Company's stock performance to that of its peer group.

While our share price is below its mid-decade highs, it has significantly outperformed its peers as well as the S&P 500 and Russell 2000 indexes over the 10-year period.

Since 2000, Consolidated Tomoka's stock has appreciated by over 175% - outpacing its next closest peer by over 100%.

Over the same period, the S&P 500 Index lost 23% of its value while the Russell 2000 Index increased in value by 26%.



ALCO – Alico, Inc.
 AVTR – Avatar Holdings Inc.
 BRER – Bresler & Reiner, Inc.
 CALC – California Coastal Communities, Inc.

COMPANY PEER GROUP

HOFD – Homefed Corp
 MAXX – MAXXAM Inc.
 OKRG – Oakridge Holdings Inc.
 POPE – Pope Resources Inc.

TRC – Tejon Ranch Company
 TPG – Thomas Properties Group, Inc.
 CTO – Consolidated Tomoka Land Co.

Note: The comparative sample group consisted of companies with comparable business operations and relative size identified by the Company's compensation consultant in 2008 and peer companies provided by Research Data Group and used in the performance chart in the 2009 Form 10-K.

LOOKING AHEAD AT THE NEXT 10 YEARS

The strategy we set in motion 10 years ago is not static. The Company always looks to the future to anticipate market changes. As we do, we are encouraged by what we see.

- We anticipate that the Florida real estate market will remain depressed in the near term (that is, the next 2 to 3 years), but we expect that the market will rebound positively as the recession ebbs, partly because of the many intrinsic qualities that have historically made Florida one of the leading states in terms of annual population growth.
- The first wave of the "baby boomer" generation is now reaching retirement age, and we believe that a significant number will choose Florida for their retirement or for a second home.
- We expect that retirement will be the engine that creates new demand for profitable commercial, medical, and related support services in our local market.
- We anticipate that the relative affordability of our area compared to other parts of Florida will result in significant demand in the mid-price range of the market.
- We believe that the existing urban growth boundaries on the west side of our land holdings, coupled with a shortage of competitive undeveloped property, should channel new demand on our land.

We believe that the Company is well-positioned with valuable entitlements to capitalize on these market factors.

BUSINESS PLAN RE-EVALUATION AND UPDATE

Annually, the Board reviews the business plan, corporate strategies, and makes adjustments as circumstances warrant. After the 2010 annual meeting of shareholders, we will hold a special Board workshop to review the results of implementing our business plan over the last 10 years and to focus on changes that may be necessary as we face the challenges of the next decade.

In developing any alternate strategies or changes to the business plan, the Board will be mindful of our proven core principles of maintaining low corporate debt and a sufficient and reliable source of recurring cash flow to sustain business operations during down markets.

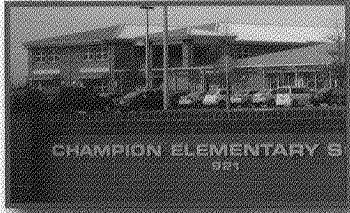
CORPORATE ACTIONS

In February 2009, the Board expanded the number of directors to eleven; John J. Allen and Jeffry B. Fuqua were elected to fill the two new positions. In May 2009, Allen C. Harper was elected to fill the position previously held by James E. Gardner. After the 2009 annual meeting of shareholders, and in response to support for a shareholder proposal, William J. Voges, an independent director, was elected Chairman of the Board. John C. Myers, III, announced his retirement in January 2010, and John C. Adams, Jr. announced that he would retire at the 2010 annual meeting of shareholders. A. Chester Skinner, III, and Thomas P. Warlow, III, have been nominated and will stand for election at the 2010 annual meeting of shareholders along with incumbent director Linda Loomis Shelley. At its February 2010 meeting, the Board approved termination of its Executive Committee because the separation of the positions of chairman and chief executive officer eliminated the need for this committee.

While many of our peers have discontinued their dividend payment, the Company paid dividends totaling \$0.30 per share in 2009. In January 2010, the Board determined that it was appropriate to reduce quarterly dividends to conserve capital due to the overall economic climate and continuing weakness in the real estate industry. The Board continues to review the Company's dividend strategy on a quarterly basis.

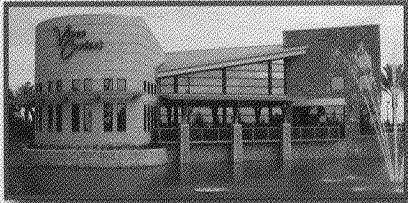
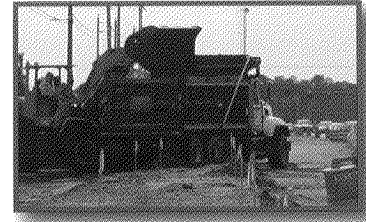
NEW DEVELOPMENTS

Several significant development projects were completed in 2009, creating new marketing opportunities. A good example is the new Florida Hospital, a \$200 million, 277 bed facility, which opened in July on Interstate 95 at the north end of the Company's land holdings. The Company is currently designing and permitting the initial phase of a professional office and medical park adjacent to the hospital. Based on demand, this park could grow to approximately 80 acres.



Infrastructure is critical to creating opportunities for future development. The Company donated land for the construction of a new elementary school, that opened in 2009, west of the LPGA International community, which the Company believes will have long-term benefits in attracting young families to live in homes built on Company land. In February, the City of Daytona Beach opened its new police headquarters on land purchased from the Company adjacent to our Gateway Commerce Park.

Also, during 2009, two significant road projects were completed: Tournament Drive, providing access to the new Champion Elementary School and the Company's residential lands, and Gateway North Drive, providing access to a new upscale restaurant that opened in January 2010 and future commercial development. In October, the Company negotiated a favorable funding agreement with the City of Daytona Beach and Volusia County to access federal and state funding including \$5.7 million of federal stimulus funds to construct a 1.4 mile extension of Dunn Avenue over Interstate 95 to intersect with Tomoka Farms Road. When completed, this roadway will provide improved access to our Interstate Commerce Park, and is ultimately planned to provide access to all of our westerly lands.



Management is currently pursuing approvals for three land use changes on approximately 4,500 acres to increase land values and to better position our land west of Interstate 95 for well-designed residential and commercial development.

SUMMARY

Having learned from prior real estate downturns, the Company is positioned to protect your investment today and prepared to take full advantage of its opportunities when the Florida real estate market rebounds.

W.H. McMunn

William H. McMunn
President and Chief Executive Officer

William J. Voges

William J. Voges
Chairman of the Board

*"Take a simple idea
and take it seriously."*

- Charles T. Munger

**UNITED STATES
SECURITIES AND EXCHANGE COMMISSION**
Washington, DC 20549

SEC Mail Processing
Section

FORM 10-K

APR 06 2010

Washington, DC
110

**ANNUAL REPORT PURSUANT TO SECTION 13 OR 15(d) OF THE SECURITIES
EXCHANGE ACT OF 1934**

For the fiscal year ended December 31, 2009

**TRANSITION REPORT PURSUANT TO SECTION 13 OR 15(d) OF THE SECURITIES
EXCHANGE ACT OF 1934**

For the transition period from _____ to _____

Commission File Number 001-11350

CONSOLIDATED-TOMOKA LAND CO.

(Exact name of registrant as specified in its charter)

Florida

(State or other jurisdiction of
incorporation or organization)

59-0483700

(I.R.S. Employer
Identification No.)

1530 Cornerstone Boulevard,
Suite 100

Daytona Beach, Florida

(Address of principal executive offices)

32117

(Zip Code)

Registrant's Telephone Number, including area code

(386) 274-2202

SECURITIES REGISTERED PURSUANT TO SECTION 12(b) OF THE ACT

Title of each class

Name of each exchange on which registered

COMMON STOCK, \$1 PAR VALUE

NYSE Alternext US

SECURITIES REGISTERED PURSUANT TO SECTION 12(g) OF THE ACT:

NONE

(Title of Class)

Indicate by check mark if the registrant is a well-known seasoned issuer, as defined in Rule 405 of the Securities Act. YES NO

Indicate by check mark if the registrant is not required to file reports pursuant to section 13 or Section 15(d) of the Act. YES NO

Indicate by check mark whether the registrant (1) has filed all reports required to be filed by Section 13 or 15(d) of the Securities Exchange Act of 1934 during the preceding 12 months (or for such shorter period that the registrant was required to file such reports), and (2) has been subject to such filing requirements for the past 90 days. YES NO

Indicate by check mark whether the registrant has submitted electronically and posted on its corporate Website, if any, every Interactive Data File required to be submitted and posted pursuant to Rule 405 of Regulation S-T (S232.405 of this chapter) during the preceding 12 months (or for such shorter period that the registrant was required to submit and post such files). YES NO

Indicate by check mark if disclosure of delinquent filers pursuant to Item 405 of Regulation S-K (S229.405 of this chapter) is not contained herein, and will not be contained, to the best of registrant's knowledge, in definitive proxy or information statements incorporated by reference in Part III of this Form 10-K or any amendment to this Form 10-K.

Indicate by check mark whether the registrant is a large accelerated filer, an accelerated filer, a non-accelerated filer, or a smaller reporting company. See the definitions of "large accelerated filer," "accelerated filer" and "smaller reporting company" in Rule 12b-2 of the Exchange Act.

Large accelerated filer Smaller reporting company Accelerated filer Non-accelerated filer
(Do not check if smaller reporting company)

Indicate by check mark whether the registrant is a shell company (as defined in Rule 12b-2 of the Act). YES NO

The aggregate market value of the shares of common stock held by non-affiliates of the registrant at June 30, 2009, was approximately \$192,269,726.

The number of shares of the registrant's Common Stock outstanding on March 12, 2010 was 5,723,268.

Portions of the Registrant's Proxy Statement for the 2010 Annual Meeting of Shareholders, which will be filed with the Security and Exchange Commission within 120 days after the end of the registrant's fiscal year ended December 31, 2009, are incorporated by reference in Part III of this report.

“Safe Harbor”

Certain statements contained in this Form 10-K (other than statements of historical fact) are forward-looking statements. The words “believe,” “estimate,” “expect,” “intend,” “anticipate,” “will,” “could,” “may,” “should,” “plan,” “potential,” “predict,” “forecast,” “foresee,” “project,” and similar expressions and variations thereof identify certain of such forward-looking statements, which speak only as of the dates on which they were made. Forward-looking statements are made based upon management’s expectations and beliefs concerning future developments and their potential effect upon the Company. There can be no assurance that future developments will be in accordance with management’s expectations or that the effect of future developments on the Company will be those anticipated by management.

The Company wishes to caution readers that the assumptions which form the basis for forward-looking statements with respect to or that may impact earnings for the year ended December 31, 2010, and thereafter, include many factors that are beyond the Company’s ability to control or estimate precisely. These risks and uncertainties include the risk factors set forth in Item 1A below.

While the Company periodically reassesses material trends and uncertainties affecting its results of operations and financial condition, the Company does not intend to review or revise any particular forward-looking statement referenced herein in light of future events.

TABLE OF CONTENTS

| | <u>Page #</u> |
|-------------------------------------------------------------------------------------------------------------------------------|---------------|
| PART I | |
| Item 1. BUSINESS | 1 |
| Item 1A. RISK FACTORS | 8 |
| Item 1B. UNRESOLVED STAFF COMMENTS | 13 |
| Item 2. PROPERTIES | 13 |
| Item 3. LEGAL PROCEEDINGS | 14 |
| Item 4. RESERVED | 14 |
| PART II | |
| Item 5. MARKET FOR REGISTRANT'S COMMON EQUITY, RELATED STOCKHOLDER MATTERS AND ISSUER PURCHASES OF EQUITY SECURITIES | 15 |
| Item 6. SELECTED FINANCIAL DATA | 18 |
| Item 7. MANAGEMENT'S DISCUSSION AND ANALYSIS OF FINANCIAL CONDITION AND RESULTS OF OPERATIONS | 19 |
| Item 7A. QUANTITATIVE AND QUALITATIVE DISCLOSURES ABOUT MARKET RISK | 28 |
| Item 8. FINANCIAL STATEMENTS AND SUPPLEMENTARY DATA | 28 |
| Item 9. CHANGES IN AND DISAGREEMENTS WITH ACCOUNTANTS ON ACCOUNTING AND FINANCIAL DISCLOSURE | 28 |
| Item 9A. CONTROLS AND PROCEDURES | 28 |
| Item 9B. OTHER INFORMATION | 29 |
| PART III | |
| Item 10. DIRECTORS, EXECUTIVE OFFICERS AND CORPORATE GOVERNANCE | 30 |
| Item 11. EXECUTIVE COMPENSATION | 30 |
| Item 12. SECURITY OWNERSHIP OF CERTAIN BENEFICIAL OWNERS AND MANAGEMENT AND RELATED STOCKHOLDER MATTERS | 30 |
| Item 13. CERTAIN RELATIONSHIPS AND RELATED TRANSACTIONS, AND DIRECTOR INDEPENDENCE | 31 |
| Item 14. PRINCIPAL ACCOUNTING FEES AND SERVICES | 31 |
| PART IV | |
| Item 15. EXHIBITS, FINANCIAL STATEMENT SCHEDULES | 32 |
| Signatures | 33 |

PART I

ITEM 1. BUSINESS

Consolidated-Tomoka Land Co. (which is referred to as the “Company,” “we,” “our,” or “us”) is primarily engaged in real estate, income properties, and golf operations (collectively, the “Real Estate Business”) through its wholly-owned subsidiaries, Indigo Group Inc., Indigo Development LLC, Indigo International LLC., Indigo Group Ltd., Indigo Commercial Realty Inc., W. Hay Inc., W. Hay LLC, and Palms Del Mar Inc. Real estate operations include land sales and development, agricultural operations, and leasing properties for oil and mineral exploration. Income properties primarily consist of the ownership of properties leased on a triple-net and double-net basis. Golf operations consist of the operation of two golf courses, a clubhouse facility, and food and beverage activities. These operations are predominantly located in Volusia County, Florida, with various income properties located in Florida, Georgia, and North Carolina.

The following is information regarding the Company’s business segments. The “General, Corporate, and Other” category includes general and administrative expenses, income earned on investment securities, and other miscellaneous income and expense items.

| | 2009 | 2008 | 2007 |
|----------------------------------------------------------------------------------|----------------|-----------|-----------|
| | (IN THOUSANDS) | | |
| Revenues of each segment are as follows: | | | |
| Real Estate | \$ 2,634 | \$ 4,565 | \$ 25,948 |
| Income Properties | 9,570 | 9,236 | 8,725 |
| Golf | 4,724 | 4,672 | 5,160 |
| General, Corporate, and Other | 231 | 2,082 | 3,243 |
| | \$ 17,159 | \$ 20,555 | \$ 43,076 |
| Operating income (loss) before income tax for each segment is as follows: | | | |
| Real Estate | \$ 1,379 | \$ 2,972 | \$ 19,013 |
| Income Properties | 7,299 | 7,337 | 6,956 |
| Golf | (1,920) | (1,843) | (1,749) |
| General, Corporate, and Other | (5,513) | (730) | (2,927) |
| | \$ 1,245 | \$ 7,736 | \$ 21,293 |
| Identifiable assets of each segment are as follows: | | | |
| Real Estate | \$ 41,255 | \$ 36,917 | \$ 33,026 |
| Income Properties | 117,551 | 117,198 | 105,121 |
| Golf | 7,349 | 7,876 | 8,334 |
| General, Corporate, and Other | 10,420 | 11,155 | 25,352 |
| | \$176,575 | \$173,146 | \$171,833 |

Identifiable assets by segment are those assets that are used in each segment. General corporate assets and those used in the Company’s other operations consist primarily of cash, investment securities, notes receivable, and property, plant, and equipment.

BUSINESS PLAN

In 1999, we adopted a business plan that we believed could increase shareholder value year-after-year and also produce stable earnings during depressed real estate markets. We committed to minimizing corporate debt and overhead. The real estate market has always been cyclical. In down markets, significant debt can severely weaken a real estate company by forcing it to sell off valuable assets at a discount. Although our revenues and profits have grown significantly, prior to the national and local economic downturn experienced in 2008 and 2009, we have only 12 full-time corporate employees—less than we had in 2000.

ITEM 1. BUSINESS (Continued)

Except for our agricultural operations, we subcontract all other work. To cover operating expenses and produce stable income during challenging economic conditions, we accumulated a debt-free \$120 million portfolio of net-lease properties. These strategic initiatives have allowed us to continue to sell land at the highest prices per square-foot in our market. We have a policy of not discounting prices to make a sale even during challenging times. We can afford to hold our lands until the market improves. In short, we believe that our business plan allows us to maximize shareholder value in both good and bad times.

Our business plan accelerates the conversion of our agricultural lands located in Daytona Beach into a geographically diverse portfolio of low-risk income properties utilizing income tax deferral under Section 1031 of the Internal Revenue Code. Our long-held lands are carried on our books at a very low tax basis, and as a result, qualifying land sales generate very large taxable gains. The 1031 exchange process allows us to postpone, hopefully indefinitely, the related income taxes and reinvest 100% of the gross sale proceeds of qualifying sales. To equal the equivalent after-tax returns from our 1031 investment portfolio, alternative investments would need to yield a safe return about 40% greater. Our 1031 investment strategy offers a number of options that can further increase shareholder value. For example, because our portfolio is comprised of net-lease tenants with high quality credit, we have the option of borrowing against a property on a non-recourse basis and reinvesting the borrowed funds into any number of alternate investments, including self-development, without triggering the repayment of the deferred taxes. We expect that leveraging our portfolio in future years will allow us to further increase our return on investment and shareholder value. We test alternative strategies under our business plan, which is reviewed annually by the Board of Directors. This analysis consistently indicates that our 1031 tax strategy, when applicable, coupled with self-development yields the highest potential shareholder value year after year.

Real estate sales and development are highly localized activities. Our success is based on execution of our business plan by a small, but talented, team of employees with the local knowledge and contacts to market our products and obtain the necessary entitlements. Our strategy, coupled with our long-term vision, are the critical steps in building shareholder value. While we often refer to “selling land,” in reality, we are exchanging our low income-producing asset—our agricultural land—into a new higher-value geographically dispersed assets that produces predictable income. Coupled with our self-development of certain select income product types, we are growing our assets, cash flow, profits, and shareholder value.

From 2007 through 2009, we expanded into self-development of select office and flex office/warehouse properties. During 2007, we analyzed our Daytona Beach land holdings to determine which core properties we wished to retain for the long term. These identified sites all have the potential to develop over time into high-value net-lease income properties that we believe will meet our adopted criteria to hold for the long term in our portfolio. We anticipate that these select properties will be comprised of build to suit, self-developed or land leases.

REAL ESTATE OPERATIONS

COMMERCIAL DEVELOPMENT. In 1993, the Company received Development of Regional Impact (“DRI”) approval on a 4,500-acre tract of land located both east and west of Interstate 95 in Daytona Beach, Florida. The tract of land includes approximately 3,000 acres west of Interstate 95 in a mixed-used development known as LPGA International. The LPGA International development includes the headquarters of the Ladies Professional Golf Association, along with two championship golf courses, clubhouse facilities, and residential communities. In addition to these uses, the DRI also provides for resort facilities, and other commercial uses. All of the remaining property within the LPGA International development was sold to MSKP Volusia Partners LLC, a Morgan Stanley-Kitson Partnership (“MSKP”) in 2007. As part of that sales transaction we took back a mortgage note in the amount of \$2,158,317. During 2009, the Company reacquired, through the foreclosure process, 317 acres of property with both residential and commercial designations which was held as collateral for

ITEM 1. BUSINESS (Continued)

the note receivable. The remainder of the property owned by MSKP, approximately 1,000 acres, was reacquired by its lender by deed in lieu of foreclosure, and during the first quarter of 2010, a residential development company purchased this property.

The Company owns approximately 1,320 acres of land within the DRI, primarily located east of Interstate 95. At the end of 2002, the Company closed the sale of the first corporate headquarters site at the Company's new Cornerstone Office Park located within the 250-acre Gateway Business Center at the southeast quadrant of the Interstate 95 interchange at LPGA Boulevard. Development of the office park was substantially completed in 2003, with the opening in January 2004 of the first office building owned and constructed by a third party. The Company's corporate office is located in this building. A second site was sold within the development during 2005, with a companion 47,000 square-foot office building owned and constructed by a third party, which opened in early 2006.

Development of a 12-acre, 4-lot commercial complex located at the north east corner of LPGA and Williamson Boulevards commenced in 2007. Site work, building plans, and permitting have been completed. This parcel includes a 22,000 square-foot "Class A" office building constructed by the Company. Occupancy of the office building commenced in the third quarter of 2009, with the building 75% occupied at year end 2009.

Development of the Gateway Commerce Park, a 250-acre industrial, warehouse, and distribution park located south of Gateway Business Center on the east side of Interstate 95 in Daytona Beach, commenced in 2004 with the first phase substantially completed prior to year-end 2004. The first sale within the development closed in February 2004, with construction of a 60,000 square-foot manufacturing and distribution facility by a third party completed in late 2004. Through December 2009, seven sales totaling approximately 70 acres have closed within the Gateway Commerce Park with buildings approximating 350,000 square feet constructed, including 32,000 square feet which was completed in early 2009. The constructed buildings include a two building 31,000 square-foot flex office space complex which was self-developed by the Company to be held in its portfolio of income properties. Leasing efforts have been slow on these two flex office buildings, with 13% occupancy at year end 2009. Total build-out, including expansions of existing buildings, on the sold and developed parcels will approximate 650,000 square feet.

Indigo Commercial Realty Inc., a wholly owned commercial real estate brokerage company formed in 1981, is the Company's agent in the management of developed and undeveloped acreage. Approximately 24 acres of fully developed sites located in the Daytona Beach area and owned by Indigo Group Inc. were available for sale at December 31, 2009. All development and improvements have been completed at these sites.

RESIDENTIAL. During 2005, Indigo Group Ltd. sold its remaining residential lot inventory in Tomoka Heights, a 180-acre development adjacent to Lake Henry in Highlands County, Florida. The remaining residential lots in Riverwood Plantation, a 180-acre community in Port Orange, Florida, were sold during 2004.

AGRICULTURAL OPERATIONS. The Company's agricultural lands encompass approximately 11,000 acres on the west side of Daytona Beach, Florida. Management believes the geographic location of this tract is excellent. In addition to access by major highways (Interstate 95, Interstate 4, State Road 40, and International Speedway Boulevard), the internal road system for forestry and other agricultural purposes is good. In the summer of 1998, wildfires ravaged central Florida, destroying approximately 8,500 acres of the Company's timber land. This event and the sale of an approximate 11,000-acre parcel to St. Johns River Water Management District in 1997 reduced the Company's potential for future income from sales of forest products. Expenses associated with forestry operations consist primarily of real estate taxes, with additional expenses including the costs of installing and maintaining roads and drainage systems, reforestation, and wildfire suppression.

After the wildfires experienced in 1998, the Company began replanting approximately 1,000 acres annually in timber. It is anticipated that the newly planted timber will reach maturity in 14 to 20 years. Based on then

ITEM 1. BUSINESS (Continued)

current growth projections, a significant portion of the replanted lands east of Interstate 95 and along LPGA Boulevard and certain lands west of Interstate 95 appeared to be in the path of the area's growth, which could result in some portions of the property being sold prior to the maturity of the timber crop. This situation prompted the Company to develop a business plan in the early 2000's for conversion of unplanted and immature timber lands into other agricultural uses that would produce saleable crops on a shorter maturity schedule. The timber replanting program was discontinued in 2004.

In late 2004, the Company formed a wholly owned subsidiary, W. Hay LLC, to manage the conversion of these timber lands into hay production. Annually, management assesses which areas should be converted from timber into hay operations. These decisions are based on the current economics of both the timber and hay businesses, and the then-current evaluation of the estimated maturity date of planted timber parcels. It is currently anticipated that over time a significant portion of the Company's lands will be converted into hay production.

During 2005, the Company hired staff to manage and operate equipment for the ongoing hay operations. Approximately 80 acres of land were planted during 2005, with the first harvest in the first quarter of 2006. During 2006 and 2007, the Company continued to expand its hay operations with the addition of new employees and equipment. At the end of 2009, approximately 1,500 acres were planted with an additional 200 acres in various stages of clearing and planting. Harvesting activities were limited both in 2007 through 2009 due to a significant shortage of rainfall in those years.

SUBSURFACE INTERESTS. The Company owns full or fractional subsurface oil, gas, and mineral interests in approximately 516,000 "surface" acres of land owned by others in various parts of Florida, equivalent to approximately 283,000 acres in terms of full interest. The Company leases its interests to mineral exploration firms when such firms deem exploration to be financially feasible.

Leases on 800 acres have reached maturity, but in accordance with their terms, are held by the leasing oil companies without annual rental payments because these acres contain oil wells from which the Company receives royalties.

The Company's current policy is to not release any ownership rights with respect to its reserved mineral rights. The Company will release surface entry rights or other rights upon request of a surface owner who requires such a release for a negotiated release price based on a percentage of the surface value. In connection with any release, the Company charges a minimum administrative fee.

At December 31, 2009, there were two producing oil wells on the Company's interests. Volume in 2009 was 95,882 barrels and volume in 2008 was 74,876 barrels from two producing wells. Production in barrels for prior recent years was: 2007—103,899, 2006—105,553, 2005—95,062, and 2004—109,114.

ITEM 1. BUSINESS (Continued)

INCOME PROPERTIES

The Company's business strategy involves becoming a company, over time, with a more predictable earnings pattern from geographically dispersed real estate holdings. To this end, the Company has acquired twenty-six income properties since 2000. Additionally, in 2007 the Company expanded into self-development of select properties. Following is a summary of these properties:

| <u>LOCATION</u> | <u>TENANT</u> | <u>AREA (SQUARE FEET)</u> | <u>YEAR PURCHASED or DEVELOPED</u> |
|------------------------------------------|---------------------------|-------------------------------|--------------------------------------------|
| Tallahassee, Florida | CVS | 10,880 | 2000 |
| Daytona Beach, Florida | Barnes & Noble | 28,000 | 2001 |
| Lakeland, Florida (1) | Barnes & Noble | 18,150 | 2001 |
| Sanford, Florida | CVS | 11,900 | 2001 |
| Palm Bay, Florida | Walgreens | 13,905 | 2001 |
| Clermont, Florida | CVS | 13,824 | 2002 |
| Melbourne, Florida | CVS | 10,908 | 2003 |
| Sebring, Florida | CVS | 12,174 | 2003 |
| Kissimmee, Florida | Walgreens | 13,905 | 2003 |
| Orlando, Florida | Walgreens | 15,120 | 2003 |
| Sanford, Florida | CVS | 13,813 | 2003 |
| Apopka, Florida | Walgreens | 14,560 | 2004 |
| Clermont, Florida | Walgreens | 13,650 | 2004 |
| Sebastian, Florida | CVS | 13,813 | 2004 |
| Alpharetta, Georgia | Walgreens | 15,120 | 2004 |
| Powder Springs, Georgia | Walgreens | 15,120 | 2004 |
| Lexington, North Carolina | Lowe's | 114,734 | 2005 |
| Alpharetta, Georgia | RBC Centura Bank | 4,128 | 2005 |
| Asheville, North Carolina | Northern Tool & Equipment | 25,454 | 2005 |
| Altamonte Springs, Florida | RBC Centura Bank | 4,135 | 2005 |
| Vero Beach, Florida | CVS | 13,813 | 2005 |
| Orlando, Florida | RBC Centura Bank | 4,128 | 2005 |
| Clermont, Florida | CVS | 13,813 | 2005 |
| McDonough, Georgia | Dick's Sporting Goods | 46,315 | 2006 |
| McDonough, Georgia | Best Buy | 30,038 | 2006 |
| Charlotte, North Carolina | Harris Teeter Supermarket | 45,089 | 2008 |
| 26 Properties Acquired | | <u>536,489</u> | |
| Self-Developed Properties | | | |
| Daytona Beach, Florida | Multi-Tenant | 22,012 | 2009 |
| Daytona Beach, Florida | Multi-Tenant | 30,720 | 2009 |
| 2 Self-Developed Properties | | <u>52,732</u> | |
| Total 28 Properties | | <u><u>589,221</u></u> | |

(1) Barnes & Noble vacated this property on the expiration of its lease on January 31, 2010.

With the exception of the Dick's Sporting Goods and Best Buy properties acquired in 2006 and the two self-developed properties, all properties are initially leased on a long-term, double or triple-net lease basis.

During the third quarter of 2004, CVS Corp. ("CVS") completed the acquisition of a portion of the Eckerd pharmacy chain, including all of the Florida stores. As part of the integration of the Eckerd chain into its system,

ITEM 1. BUSINESS (Continued)

some of the acquired stores were closed. Four stores owned by the Company were closed by CVS. The tenant is obligated on the leases and continues to make lease payments. Two of the four closed stores have been subleased.

During the fourth quarter of 2009, RBC Centura Bank closed its branch in Altamonte Springs, Florida. The tenant is obligated on the leases and continues to make lease payments.

In the third quarter of 2009, we were notified by Barnes & Noble that it would be vacating its store in Lakeland, Florida, upon the expiration of the original lease term at the end of January 2010. The building has since been vacated by Barnes & Noble. The Company is exploring all strategic alternatives on this 18,150 square-foot property. All remaining properties are leased with the average remaining lease term in excess of 11 years, excluding additional option years. The Barnes & Noble store in Daytona Beach, Florida, which has a lease termination date at the end of January 2011, excluding option years, is the next lease up for renewal. No other leases have less than six years remaining on the initial lease term.

As mentioned previously the Company intends to self-develop certain select income properties to hold in our income property portfolio. To date, these self-developed properties consist of the 22,000 square-foot "Class A" office building located at the corner of LPGA and Williamson Boulevards, completed in the third quarter of 2009, and the two-building 30,720 square-foot flex office space complex located in Gateway Commerce Park. Leasing efforts are continuing on both complexes with the Class A office building 75% occupied and the flex office space 13 % leased at December 31, 2009.

Other rental property is limited to ground leases for billboards, a communication tower site, and hunting leases covering 6,500 acres. A 12-acre auto dealership site, formerly under lease, was sold in 2006 at a profit approximating \$437,000 before income taxes.

The average occupancy rates, expressed as a percentage, of our acquired single tenant net lease income properties for each of the last five years on a portfolio basis are as follows:

| <u>Year</u> | <u>Occupancy (1)</u> |
|-------------|----------------------|
| 2005 | 100% |
| 2006 | 100% |
| 2007 | 100% |
| 2008 | 100% |
| 2009 | 95% |

(1) As set forth previously, four CVS Corp. (CVS), (then Eckerd) stores, consisting of a total of 50,708 square feet, were closed during the third quarter of 2004. CVS has continued to make current lease payments in accordance with the terms of the applicable lease agreements.

During 2005, two of the closed CVS stores, consisting of a total of 23,082 square feet, were subleased by CVS.

The average effective annual rental per square foot for our income properties for each of the last five years is as follows:

| <u>Year</u> | <u>Annual Rental Per Square Foot</u> |
|-------------------|--------------------------------------|
| 2005 | \$17.85 |
| 2006 | \$17.26 |
| 2007 | \$17.27 |
| 2008 | \$16.99 |
| 2009 | \$14.46 |
| 2005 – 2009 | \$17.23 |

ITEM 1. BUSINESS (Continued)

The information on lease expirations for each of the ten years starting with 2009 is as follows:

| <u>Year</u> | <u># of Tenant Leases Expiring</u> | <u>Total Square Feet of Leases Expiring</u> | <u>Annual Rents Expiring</u> | <u>Percentage of Gross Annual Rents Expiring</u> |
|-------------|------------------------------------|---------------------------------------------|------------------------------|--------------------------------------------------|
| 2009 | 0 | 0 | 0 | 0 |
| 2010 | 1 | 18,150 | \$ 319,882 | 3.4% |
| 2011 | 1 | 28,000 | \$ 559,893 | 6.0% |
| 2012 | 0 | 0 | 0 | 0 |
| 2013 | 0 | 0 | 0 | 0 |
| 2014 | 0 | 0 | 0 | 0 |
| 2015 | 0 | 0 | 0 | 0 |
| 2016 | 2 | 40,918 | \$ 687,718 | 7.5% |
| 2017 | 2 | 161,049 | \$1,266,785 | 13.9% |
| 2018 | 0 | 0 | 0 | 0 |

Each lease has additional option periods beyond the original term of the lease which are exercisable at the tenant's option.

CVS and Walgreen each account for 10% or more of both rentable square feet and gross income property revenues while Lowe's accounts for more than 10% of rentable square feet. Information regarding those tenants, including principal provisions of our leases with these tenants is as follows:

CVS Corp.—20% of portfolio by square feet, 27% by Revenue

- 100% of CVS Stores owned by CTO were originally leased and occupied by Eckerd Corporation; CVS Pharmacy Inc. acquired Eckerd Corporation in August 2004 and assumed the leases.
- Primarily 20 year initial lease terms (one lease term is 25 years).
- Primarily 4 option periods of 5 years each.
- Primarily no rent increases until option period.
- Rent ranges from \$19+/- per square foot (PSF) to \$27+/- PSF.
- All CVS leases are triple-net (no Landlord operating expense and maintenance responsibility).

Walgreen's Co.—17% of portfolio by square feet, 23% by Revenue

- 20 year or 25 year initial lease terms.
- Primarily 6 option periods of 5 years each.
- No rent increases until option period.
- Rent ranges from \$19+/- to \$26+/- PSF.
- Walgreen leases are either double-net (Landlord responsible for structure, roof and in some leases the parking lot) or triple-net (no Landlord operating expense and maintenance responsibility).

Lowe's Corporation (19% of portfolio by square feet, 7% by Revenue)

- 20 year initial lease term.
- 6 option periods of 5 years each.
- No rent increases until option period.
- Rent of \$6+ PSF.

ITEM 1. BUSINESS (Continued)

- Double-net (Landlord responsible for structure, roof, and parking lot).

GOLF OPERATIONS

On September 1, 1997, responsibility for the operations of the LPGA International golf courses was transferred from the City of Daytona Beach to a wholly-owned subsidiary of the Company. The agreement with the City of Daytona Beach provided for a second golf course and a clubhouse to be constructed by the Company in return for a long-term lease from the City on both golf courses.

The second golf course was constructed by the Company and opened for play in October 1998. The first phase of the clubhouse, which consisted primarily of the cart barn, was completed in 1999. Construction of the final phase of the clubhouse, consisting of a 17,000 square-foot facility including a pro shop, locker rooms, formal dining and banquet rooms, and a swimming pool, was completed in December 2000 and opened for business in January 2001.

COMPETITION

The real estate business in the Volusia County area is highly competitive and fragmented. We compete with numerous developers of varying sizes, ranging from local to national in scope, some of which may have greater financial resources than we have.

EMPLOYEES

The Company has twenty-one full time employees, nine of which work for W. Hay, LLC, and considers its employee relations to be satisfactory.

AVAILABLE INFORMATION

The Company's website is www.ctlc.com. The Company makes available on this website, free of charge, its annual reports on Form 10-K, quarterly reports on Form 10-Q, current reports on Form 8-K and amendments to those reports filed or furnished pursuant to Section 13(a) or 15(d) of the Securities Exchange Act of 1934, as soon as reasonably practicable after the Company electronically files or furnishes such materials to the SEC. The Company will also provide paper copies of these filings free of charge upon a specific request in writing for such filing to the Company's Corporate Secretary, P.O. Box 10809, Daytona Beach, Florida 32120-0809. All reports the Company files with or furnishes to the SEC also are available free of charge via the SEC's electronic data gathering and retrieval ("EDGAR") system available through the SEC's website at <http://www.sec.gov>. The public may read and copy any materials filed by us with the SEC at the SEC's Public Reference Room, 100 F Street, N.E., Washington, D.C. 20549. The public may obtain information on the operation of the Public Reference Room by calling the SEC at 1-800-SEC-0330.

ITEM 1A. RISK FACTORS

The real estate business is subject to a number of significant risks. The risks described below may not be the only risks which potentially could impact our business. These additional risks include those which are unknown at this time or that are currently considered immaterial. If any of the circumstances described below actually occur to a significant degree, our business, financial condition, and/or results of operations could suffer, and the trading price of our common stock could decline.

FUTURE CHANGES IN THE REAL ESTATE MARKET COULD AFFECT THE VALUE OF OUR PROPERTIES AND BUSINESS

We have extensive real estate holdings in the City of Daytona Beach in Volusia County, Florida. The economic growth of Daytona Beach, Florida, where the majority of our land is located, is an important factor in

ITEM 1A. RISK FACTORS (Continued)

creating demand for our products and services. The creation of new jobs is an important factor in economic growth of the region. The value of the real property and the revenue from related sale and/or development activities may be adversely affected by a number of factors, including:

- national, regional, and local economic climate;
- local real estate market conditions (such as an oversupply of land or a reduction in demand for real estate in an area);
- competition from other available property;
- availability of roads and utilities;
- unexpected construction costs or delays;
- government regulations and changes in real estate, zoning, land use, environmental or tax laws;
- interest rate levels and the availability of financing; and
- potential liabilities under environmental and other laws.

A PROLONGED RECESSION IN THE NATIONAL ECONOMY, OR A FURTHER DOWNTURN IN NATIONAL OR REGIONAL ECONOMIC CONDITIONS, ESPECIALLY IN FLORIDA, COULD CONTINUE TO ADVERSELY IMPACT OUR BUSINESS

The collapse of the housing market, together with the crisis in the credit markets, have resulted in a recession in the national economy with rising unemployment, shrinking gross domestic product and drastically reduced consumer spending. At such times, potential customers often defer or avoid real estate purchases due to the substantial costs involved.

Our business is especially sensitive to economic conditions in Florida, where our real estate (other than certain income properties) and self-developed properties are located. Florida is currently experiencing recessionary conditions. There is no consensus as to when the recession will end, and Florida, as one of the hardest hit states, could take longer to recover than the rest of the nation. A prolonged recession could have a material adverse effect on our business, results of operations and financial condition.

OUR FUTURE SUCCESS WILL DEPEND UPON OUR ABILITY TO SUCCESSFULLY EXECUTE ACQUISITION OR DEVELOPMENT STRATEGIES

There is no assurance that we will be able to continue to implement our strategy of investing in income properties successfully. Additionally, there is no assurance that the income property portfolio will expand at all, or if it will expand at any specified rate or to any specified size. In addition, investment in additional real estate assets is subject to a number of risks. As we expect to invest in markets other than the ones in which currently owned properties are located, we will be subject to risks associated with investment in new markets that may be relatively unfamiliar to us.

Development activities are subject to the risks normally associated with these activities. These risks include those relating to the availability and timely receipt of zoning and other regulatory approvals, the cost and timely completion of construction (including risks from factors beyond our control, such as weather, labor conditions, or material shortages), and the ability to obtain both construction and permanent financing on favorable terms. These risks could result in substantial unanticipated delays or expenses and, under certain circumstances, could prevent completion of development activities once undertaken or provide a tenant the opportunity to terminate a lease. Any of these situations may delay or eliminate proceeds or cash flows expected from these projects, which could have an adverse affect on our financial condition and results of operations.

ITEM 1A. RISK FACTORS (Continued)

OUR OPERATIONS COULD BE NEGATIVELY IMPACTED BY THE LOSS OF KEY MANAGEMENT PERSONNEL

Our future success depends, to a significant degree, on the efforts of each member of senior management. Replacement of any member of senior management could adversely affect our operations and our ability to execute business strategies. We do not have key man life insurance policies on members of senior management.

CHANGES IN LOCAL, REGIONAL, AND NATIONAL ECONOMIC CONDITIONS COULD ADVERSELY AFFECT OUR BUSINESS

The real estate development industry is cyclical in nature and is particularly vulnerable to shifts in local, regional, and national economic conditions outside of our control, such as:

- short and long-term interest rates;
- housing demand;
- population growth;
- employment levels and job growth;
- property taxes; and
- property and casualty insurance.

The real estate business is subject to a number of economic factors including the impact of rising and falling interest rates, which can affect the ability of purchasers to obtain financing, and population growth, which impacts supply and demand for new homes, as well as goods and services; and hence, land to meet those needs.

In addition, weather conditions and natural disasters such as hurricanes, tornadoes, floods, droughts, fires, and other environmental conditions can adversely affect our business.

THE REAL ESTATE BUSINESS IS SUBJECT TO ENVIRONMENTAL AND LAND USE REGULATIONS

We are subject to a wide variety of federal, state, and local laws and regulations relating to land use and development and to environmental compliance and permitting obligations, including those related to the use, storage, discharge, emission, and disposal of hazardous materials. Any failure to comply with these laws could result in capital or operating expenditures or the imposition of severe penalties or restrictions on operations that could adversely effect present and future operations.

Municipalities may restrict or place moratoriums on the availability of utilities, such as water and sewer taps. Additionally, development moratoriums may be imposed due to traffic over capacity on roads. In some areas, municipalities may enact growth control initiatives, which will restrict the number of building permits available in a given year. If municipalities in which we own land and operate take actions like these, it could have an adverse effect by causing delays, increasing costs, or limiting the ability to operate in those municipalities.

WE SELL PROPERTY IN A HIGHLY COMPETITIVE MARKET, WHICH COULD HURT FUTURE BUSINESS

Our competitors are primarily other landowners in the Volusia County area. These competitive conditions can make it difficult to sell land at desirable prices and can adversely affect operations, financial condition, or results of operations.

ITEM 1A. RISK FACTORS (Continued)

OUR QUARTERLY RESULTS ARE SUBJECT TO VARIABILITY

We have historically derived a substantial portion of our income from land sales. The timing of commercial land sales activity is not predictable and is generally subject to the purchaser's ability to obtain approvals from the city, county and regulatory agencies for their intended use of the land on a timely basis. As these approvals are subject to third party responses, it is not uncommon for delays to occur, which affect the timing of sales closings. These timing issues have caused, and may continue to cause, our operating results to vary significantly from quarter to quarter and year to year.

LOSS OF REVENUES FROM MAJOR TENANTS WOULD REDUCE CASH FLOW

Our two largest income property tenants—CVS and Walgreens—accounted for in excess of 10% of consolidated revenues individually and in the aggregate approximately 28% of consolidated revenues for the year ended December 31, 2009. The default, financial distress, or bankruptcy of one or both of these tenants could cause substantial vacancies. Vacancies reduce revenues until the affected properties can be re-leased and could decrease the ultimate sale value of each such vacant property. Upon the expiration of the leases that are currently in place, we may not be able to re-lease a vacant property at a comparable lease rate or without incurring additional expenditures in connection with such re-leasing.

THERE ARE A NUMBER OF RISKS INHERENT IN OWNING INCOME PROPERTIES

Factors beyond our control can affect the performance and value of the income properties' portfolio. Changes in national, regional, and local economic and market conditions may affect the performance of the income properties and their value. Local real estate market conditions may include excess supply and intense competition for tenants, including competition based on:

- rental rates;
- attractiveness and location of the property; and
- quality of maintenance, insurance, and management services.

In addition, other factors may adversely affect the performance and value of the income properties, including changes in laws and governmental regulations, changes in interest rates, and the availability of financing.

In addition, because real estate investments are relatively illiquid, the ability to adjust the portfolio of income properties promptly in response to economic or other conditions is limited. Certain significant expenditures generally do not change in response to economic or other conditions, including debt service (if any), real estate taxes, and operating and maintenance costs.

As of December 31, 2009, the Company owned two self-developed flex-space income properties, which total approximately 31,000 square feet. These properties were 13% leased at December 31, 2009. The Company is actively marketing these properties for lease but may not be able to lease these properties on favorable terms or at all. In addition, the lost revenues and increased property expenses resulting from the rejection by any bankrupt tenant of any of their respective leases with the Company could have a material adverse effect on the liquidity and results of operations of the Company if the Company is unable to re-lease the income properties at comparable rental rates and in a timely manner.

During early 2010 our Lakeland property was vacated by Barnes & Noble as their lease expired.

ITEM 1A. RISK FACTORS (Continued)

FUTURE GROWTH AND REAL ESTATE DEVELOPMENT REQUIRES ADDITIONAL CAPITAL THE AVAILABILITY OF WHICH IS NOT ASSURED

We expect to continue making investments in real estate development. Based on the status of several specific real estate projects, we will continue to invest significant amounts in real estate over the next several years. We could finance future expenditures from any of the following sources:

- cash flow from operations;
- bank borrowings;
- non-recourse, sale leaseback, or other financing;
- public offerings of debt or equity;
- private placement of debt or equity; or
- some combination of the above.

Financing for future expenditures may not be available on favorable terms or at all.

COMPETITION AND MARKET CONDITIONS RELATING TO GOLF OPERATIONS COULD ADVERSELY AFFECT OPERATING RESULTS

Golf operations face competition from similar nearby golf operations. Any new competitive golf operations that are developed close to our existing golf operations also may adversely impact results of operations. We have no intention at this time to allow golf course development on our adjoining property. Golf operations are also subject to adverse market conditions such as population trends and changing demographics, any of which could adversely affect results of operations. In addition, the golf operations may suffer if the economy weakens, if the popularity of golf decreases, or if unusual weather conditions or other factors cause a reduction in rounds played. Our golf operations are seasonal, primarily due to the impact of the winter tourist season and summer Florida heat and rain.

OUR COMMON STOCK IS THINLY TRADED, AND THEREFORE, THE STOCK PRICE MAY FLUCTUATE MORE THAN THE STOCK MARKET AS A WHOLE

As a result of the thin trading market for our stock, its market price may fluctuate significantly more than the stock market as a whole or the stock prices of similar companies. Without a larger float, common stock will be less liquid than the stock of companies with broader public ownership, and as a result, the trading prices for our common stock may be more volatile. Among other things, trading of a relatively small volume of common stock may have a greater impact on the trading price than would be the case if public float were larger.

OUR LARGEST SHAREHOLDER'S INTERESTS MAY CONFLICT WITH THE INTERESTS OF OTHER INVESTORS, THE BOARD OF DIRECTORS AND MANAGEMENT

Our largest shareholder, Wintergreen Advisers, LLC, which owns more than 25% of our outstanding shares, has expressed support for pursuing business strategies which conflict with our current business plan. In addition, this shareholder has presented and obtained approval of certain corporate governance policies which affect operation of the Board of Directors. The effects of these changes on our profitability and operations are unknown.

WE ARE CURRENTLY INVOLVED IN LITIGATION THAT COULD BE COSTLY AND DIVERT MANAGEMENT'S ATTENTION FROM OPERATING OUR BUSINESS.

We are currently involved in litigation with our largest shareholder, Wintergreen Advisers, LLC, relating to the inspection of certain corporate records. We are vigorously defending this action. We cannot, however,

ITEM 1A. RISK FACTORS (Continued)

determine with certainty the outcome or resolution of this litigation or the timing of its resolution. Litigation can be expensive, lengthy, and disruptive to normal business operations.

In addition to the expense and burden incurred in defending this litigation, our management's efforts and attention may be diverted from ordinary business operations in order to address these claims. See Item 3. "Legal Proceedings" below for more information concerning this litigation.

ITEM 1B. UNRESOLVED STAFF COMMENTS

NONE

ITEM 2. PROPERTIES

Land holdings of the Company and its affiliates, which are primarily located in Florida, include: approximately 11,600 acres (including commercial/retail sites) in the Daytona Beach area of Volusia County; approximately 3 acres in Highlands County; retail buildings located on 74 acres throughout Florida, Georgia, and North Carolina, two self-developed multi-tenant buildings located on 12 acres in Daytona Beach, Florida; and full or fractional subsurface oil, gas, and mineral interests in approximately 516,000 "surface acres" in 20 Florida counties. Approximately 3,000 acres of the lands located in Volusia County were encumbered under a mortgage, until they were released when the financing agreement was amended in March 2007. The conversion and subsequent utilization of these assets provides the base of the Company's operations.

The Volusia County holdings include approximately 10,500 acres within the city limits of Daytona Beach and 33 acres in the City of Ormond Beach. During 2003, the Company acquired 946 acres of land, which will be used for wetlands mitigation. During 2005, the Company purchased \$5.1 million of wetland mitigation credits, equivalent to 200 credits. At December 31, 2009, there were 65 mitigation credits remaining with a book value of \$1.8 million. Of the 10,500 acres inside the city limits of Daytona Beach, approximately 1,420 acres have received development approval by governmental agencies. The 1,420 acres plus approximately 730 acres owned by the City of Daytona Beach, 446 acres owned by Indigo Community Development District, and 1,900 acres sold to others for development are the site of a long-term, mixed-use development, which includes "LPGA International." LPGA International includes the national headquarters of the Ladies Professional Golf Association, along with two "Signature" golf courses and a residential community, a clubhouse, a maintenance facility, and main entrance roads to serve the LPGA International community.

On October 22, 2004, the Company closed on the sale of most of the remaining land (over 1,000 acres) within the LPGA International community, with all the remaining land sold in 2007. The sale to MSKP, which had previously purchased 261 acres within the development, was for a price of approximately \$18,000,000. The sale included acreage around the Legends golf course, several commercial parcels fronting International Speedway Boulevard and LPGA Boulevard, and a hotel/resort parcel adjacent to the LPGA International Clubhouse. A subsidiary of the Company continues to operate the golf facilities. As part of the 2007 transaction we took back a mortgage note in the amount of \$2,158,317. The mortgage note receivable, which was collateralized by a first mortgage on 317 acres of land with both residential and commercial land use designations, was foreclosed on by the Company in the fourth quarter of 2009. The note receivable was written-off and the land reacquired, with no gain or loss recognized on the transaction with the value supported by independent appraisal.

The Company completed foreclosure on an additional mortgage note receivable during 2009. The \$1,845,376 mortgage note receivable was collateralized by a first mortgage on 6 acres of vacant commercial property with Interstate 95 frontage in Daytona Beach, Florida. This note receivable was also written-off and the land reacquired, with no gain or loss recognized on the transaction, with the value supported by independent appraisal.

ITEM 2. PROPERTIES (Continued)

The lands not currently being developed, including those on which development approvals have been received, are involved in active agricultural operations. These lands straddle Interstate 95 for 6-1/2 miles between International Speedway Boulevard (U. S. Highway 92) and State Road 40, with approximately 9,700 acres west and 1,500 acres east of the interstate.

A 12-acre parcel located in Port Orange, Florida, was sold in 2007.

Subsidiaries of the Company are holders of the developed Volusia County properties and are involved in the development of additional lands zoned for commercial or industrial purposes.

The Company's oil, gas, and mineral interests, which are equivalent to full rights on 283,000 acres, were acquired by retaining subsurface rights when acreage was sold many years ago. During 2005, the Company sold its remaining lot inventory located at the 180-acre Tomoka Heights development in Highlands County, Florida. Indigo Group Ltd. developed this community, located adjacent to Lake Henry, which consisted of single-family and duplex units.

The Company also owns and operates properties for leasing. These properties are discussed under "Business-Income Properties" above.

ITEM 3. LEGAL PROCEEDINGS

In December 2008, Wintergreen Advisers, LLC ("Wintergreen"), a Delaware limited liability company and the largest shareholder of the Company, filed a Verified Application for Court Ordered Inspection of the Company's business records in the Circuit Court of the Seventh Judicial Circuit in and for Volusia County, Florida. The complaint alleges that the Company has not satisfied Wintergreen's second demand to inspect certain corporate records, and Wintergreen is seeking an order requiring the Company to make additional records available for inspection and also requiring the Company to pay Wintergreen's costs, including reasonable attorneys' fees, incurred to obtain the order. The Company does not believe Wintergreen's second demand meets Florida's statutory requirements for the production of records and is vigorously defending this action. Trial is currently underway and no relief has been granted as of the date of the filing of this Form 10-K.

From time to time, we may be a party to certain legal proceedings, incidental to the normal course of our business. While the outcome of these legal proceedings cannot be predicted with certainty, we do not expect that these proceedings will have a material effect upon our financial condition or results of operations.

ITEM 4. RESERVED

PART II

ITEM 5. MARKET FOR REGISTRANT'S COMMON EQUITY, RELATED STOCKHOLDER MATTERS, AND ISSUER PURCHASES OF EQUITY SECURITIES

COMMON STOCK PRICES AND DIVIDENDS

The Company's common stock trades on the NYSE Alternext US under the symbol CTO. The Company has paid dividends on a continuous basis since 1976, the year in which its initial dividends were paid. The following table summarizes aggregate annual dividends paid per share over the two years ended December 31, 2009:

| | |
|------------|--------|
| 2009 | \$.30 |
| 2008 | \$.40 |

On January 27, 2010, a dividend of \$.01 per share was declared by the Company's Board of Directors payable on March 1, 2010 to shareholders of record on February 10, 2010.

The level of future quarterly dividends will be subject to an ongoing review of the overall economy with emphasis on our local real estate market, cash flow, and our capital needs including stock repurchases.

Indicated below are high and low sales prices of our stock for each full quarter within the last two fiscal years. All quotations represent actual transactions.

| | 2009 | | 2008 | |
|----------------------|-------|-------|-------|-------|
| | High | Low | High | Low |
| | \$ | \$ | \$ | \$ |
| First Quarter | 39.97 | 21.56 | 62.42 | 42.50 |
| Second Quarter | 38.19 | 28.13 | 60.00 | 42.00 |
| Third Quarter | 43.76 | 32.06 | 50.57 | 37.00 |
| Fourth Quarter | 40.48 | 32.46 | 42.72 | 24.00 |

The number of shareholders of record as of March 1, 2010 (without regard to shares held in nominee or street name) was 694.

There have been no sales of unregistered securities within the past three years.

ITEM 5. MARKET FOR REGISTRANT'S COMMON EQUITY, RELATED STOCKHOLDER MATTERS, AND ISSUER PURCHASES OF EQUITY SECURITIES (Continued)

STOCK PERFORMANCE GRAPH

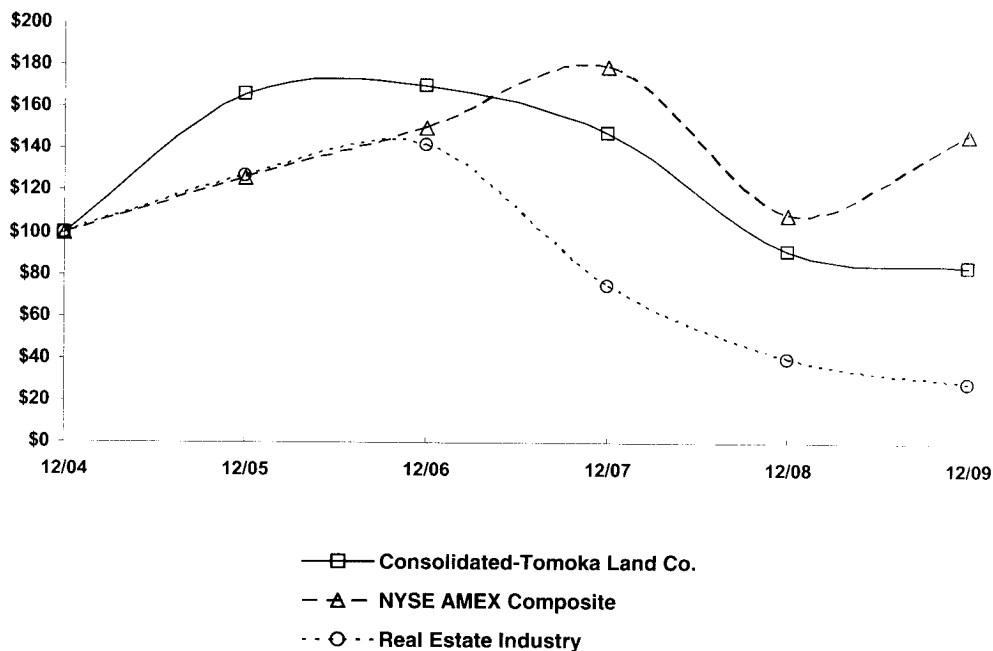
COMPARISON OF 5 YEAR CUMULATIVE TOTAL RETURN*

Among Consolidated-Tomoka Land Co., the AMEX Composite Index and a Peer Group

The following performance graph shows a comparison of cumulative total shareholder return from a \$100 investment in stock of the Company over the five-year period ending December 31, 2009, with the cumulative shareholder return of the American Stock Exchange Composite Index and a Real Estate Industry Index provided by Research Data Group, which consists of four companies; Avatar Holdings, California Coastal Communities Inc., Maxxam Inc., and Oakridge Holdings Inc. Note that historic stock price performance is not necessarily indicative of future price performance.

COMPARISON OF 5 YEAR CUMULATIVE TOTAL RETURN*

Among Consolidated-Tomoka Land Co., The AMEX Composite Index
And Real Estate Industry Index



*\$100 invested on 12/31/04 in stock or index, including reinvestment of dividends.
Fiscal year ending December 31.

| | 12/04 | 12/05 | 12/06 | 12/07 | 12/08 | 12/09 |
|-----------------------------------|--------|--------|--------|--------|--------|--------|
| Consolidated-Tomoka Land Co. | 100.00 | 165.70 | 170.12 | 148.07 | 91.04 | 84.04 |
| NYSE Amex Composite | 100.00 | 125.80 | 150.40 | 178.95 | 108.56 | 147.27 |
| Real Estate Industry | 100.00 | 126.74 | 141.76 | 75.00 | 39.90 | 28.39 |

ITEM 5. MARKET FOR REGISTRANT'S COMMON EQUITY, RELATED STOCKHOLDER MATTERS, AND ISSUER PURCHASES OF EQUITY SECURITIES (Continued)

ISSUER REPURCHASES OF EQUITY SECURITIES

In November 2008, the Company's Board of Directors authorized the repurchase by the Company from time to time of up to \$8 million of its common stock. The Company has repurchased 4,660 shares of its common stock at a cost of \$104,648 under this plan and remains authorized to repurchase shares of its common stock up to a dollar value of \$8 million. There is no expiration date for the plan.

The following table shows that the Company made no repurchases of its common stock during the quarter ended December 31, 2009, under the stock repurchase program described above:

| <u>Period</u> | <u>Total Number of Shares Purchased</u> | <u>Average Price Paid per Share</u> | <u>Total Number of Shares Purchased as Part of Publicly Announced Plans or Programs</u> | <u>Maximum Approximate Dollar Value of Shares that May Yet Be Purchased Under the Plans or Programs</u> |
|------------------------------------------------|-----------------------------------------|-------------------------------------|-----------------------------------------------------------------------------------------|---------------------------------------------------------------------------------------------------------|
| October 1, 2009 – October 31, 2009 | — | — | — | \$7,895,352 |
| November 1, 2009 – November 30, 2009 | — | — | — | \$7,895,352 |
| December 1, 2009 – December 31, 2009 | — | — | — | \$7,895,352 |
| Total | — | — | — | \$7,895,352 |

ITEM 6. SELECTED FINANCIAL DATA

The following selected financial data should be read in conjunction with the Company's Consolidated Financial Statements and Notes along with "Management's Discussion and Analysis of Financial Condition and Results of Operations" included in this report.

| | Five-Year Financial Highlights | | | | |
|-------------------------------------------------------------------------------------------------------------|-----------------------------------------|----------------|----------------|----------------|----------------|
| | 2009 | 2008 | 2007 | 2006 | 2005 |
| | (Unaudited) | | | | |
| | (In thousands except per share amounts) | | | | |
| | \$ | \$ | \$ | \$ | \$ |
| Summary of Operations: | | | | | |
| Revenues: | | | | | |
| Real Estate | 16,928 | 18,473 | 39,833 | 42,336 | 43,510 |
| Profit on Sales of Other Real Estate Interest | 36 | 1,370 | 2,580 | 679 | 272 |
| Interest and Other Income | 195 | 712 | 663 | 574 | 938 |
| TOTAL | 17,159 | 20,555 | 43,076 | 43,589 | 44,720 |
| Operating Costs and Expenses | | | | | |
| General and Administrative Expenses | (5,744) | (2,813) | (6,170) | (6,819) | (7,997) |
| Income Taxes | (444) | (2,901) | (7,760) | (7,486) | (8,126) |
| Income Before Discontinued Operations, and Cumulative Effect of Change in Accounting Principles | | | | | |
| | 801 | 4,835 | 13,533 | 14,004 | 14,822 |
| Income (Loss) from Discontinued Operations, Net of tax | | | | | |
| | — | — | — | 240 | (4) |
| Cumulative Effect of Change in Accounting Principles, Net of tax | | | | | |
| | — | — | — | (216) | — |
| Net Income | 801 | 4,835 | 13,533 | 14,028 | 14,818 |
| Basic Earnings Per Share: | | | | | |
| Income Before Discontinued Operations and Cumulative Effect of Change in Accounting Principles | | | | | |
| | \$ 0.14 | \$ 0.84 | \$ 2.37 | \$ 2.47 | \$ 2.62 |
| Income (Loss) from Discontinued Operations, Net of Tax | | | | | |
| | — | — | — | 0.04 | — |
| Cumulative Effect of Change in Accounting Principles, Net of Tax | | | | | |
| | — | — | — | (0.04) | — |
| Net Income | \$ 0.14 | \$ 0.84 | \$ 2.37 | \$ 2.47 | \$ 2.62 |
| Diluted Earnings Per Share: | | | | | |
| Income Before Discontinued Operations, and Cumulative Effect of Change in Accounting Principles | | | | | |
| | \$ 0.14 | \$ 0.84 | \$ 2.36 | \$ 2.46 | \$ 2.58 |
| Income (Loss) from Discontinued Operations, Net of Tax | | | | | |
| | — | — | — | \$ 0.04 | — |
| Cumulative Effect of Change in Accounting Principles, Net of Tax | | | | | |
| | — | — | — | \$ (0.04) | — |
| Net Income | \$ 0.14 | \$ 0.84 | \$ 2.36 | \$ 2.46 | \$ 2.58 |
| Dividends Paid Per Share | \$ 0.30 | \$ 0.40 | \$ 0.38 | \$ 0.34 | \$ 0.30 |
| Summary of Financial Position: | | | | | |
| Total Assets | 176,575 | 173,146 | 171,833 | 153,774 | 143,258 |
| Shareholders' Equity | 118,034 | 117,814 | 116,671 | 102,997 | 94,268 |
| Long-Term Debt | 13,210 | 8,550 | 6,807 | 7,062 | 7,298 |

ITEM 7. MANAGEMENT'S DISCUSSION AND ANALYSIS OF FINANCIAL CONDITION AND RESULTS OF OPERATIONS

OPERATIONS OVERVIEW

We are primarily engaged in real estate land sales and development, reinvestment of land sales proceeds into income properties, and golf course operations. We own approximately 11,600 acres in Florida, of which approximately 10,500 are located within and form a substantial portion of the western boundary of The City of Daytona Beach. Our lands are well-located in the central Florida Interstate 4 corridor, providing an opportunity for reasonably stable land sales in future years.

With our substantial land holdings in Daytona Beach, we have parcels available for the entire spectrum of real estate uses. Along with land sales, we selectively develop parcels primarily for commercial uses. Although pricing levels and changes by us and our immediate competitors can affect sales, we generally enjoy a competitive edge due to low costs associated with long-time land ownership and a significant ownership position in the immediate market. As a general policy we do not discount sales prices to accelerate land sales.

Until the dramatic downturn in the national and local economies in 2008, sales activity on Company- owned lands had been strong over several years. Sales during 2009 consisted of the sale of 16 acres of land, of which fourteen acres were uplands and two acres were wetlands. Development activities on and around Company- owned lands continued relatively strong throughout 2008 and into 2009 with the commencement and completion of projects planned or in process before the downturn. Sales and development activities over the last several years included: the sale of 120 acres of land to Florida Hospital for the construction of a new hospital, which opened in July of this year; the expansion of the Daytona Beach Auto Mall; the opening of a second office building in the Cornerstone Office Park; continued development within the 250-acre Gateway Commerce Park (where a 32,000 square-foot industrial building was completed in early 2009) and the 60-acre Interstate Commerce Park, both adjacent to Interstate 95; and the sale of approximately 100 acres of land west of Interstate 95 on which Father Lopez, a private high school, was constructed and opened in August 2008. In early 2009, the City of Daytona Beach police headquarters, located adjacent to Gateway Commerce Park, was completed and occupied. Also in 2009, construction was completed on a 288-unit apartment complex and a medical office building, with development of a townhouse residential community on the east side of Interstate 95 continuing. During the first quarter of 2009, construction commenced on an upscale restaurant on a parcel adjacent to the Interstate 95 and LPGA Boulevard interchange, which the Company sold during the fourth quarter of 2008. This restaurant facility, Vince Carter's, opened for business in February 2010. On the west side of Interstate 95, development has been completed on a fire station, a hotel, and a 59,000 square-foot furniture retail store, Furniture Row, in the Interstate Commerce Park, along with a new elementary school which opened in August 2009.

Historical sales and profits are not indicative of future results because of the discrete nature of land sales and variations in the cost basis of owned land. A significant portion of the Company's profits, in any given year, are generated through relatively large discreet commercial land sales transactions. The process for these land sales transactions, from the time of preliminary discussions through contract negotiations, due diligence periods, and the closing, can last from several months to several years. The trend in Company profits in 2005 through 2009, in particular profits from real estate sales during that period, followed the overall general trend of the national and local economies and the real estate markets. The residential real estate market reached its peak in late 2005 and early 2006 with the market, hampered by the overall economy and credit crisis, reaching its low point in 2008 and 2009. The local commercial real estate market lagged the residential market downturn by approximately two years. The Company was able to close sales contracts during 2007 which were generated during the years of the strong real estate market. We entered 2008 with a relatively strong contract backlog of real estate contracts. As the economy, real estate markets, and credit markets continued to slow, several of the contracts in place did not result in closings as buyers took a more conservative approach. We do not expect a significant improvement in economic conditions, in particular the real estate market, throughout 2010.

ITEM 7. MANAGEMENT'S DISCUSSION AND ANALYSIS OF FINANCIAL CONDITION AND RESULTS OF OPERATIONS (Continued)

In 2000, we initiated a strategy of investing in income properties utilizing the proceeds of agricultural land sales qualifying for income tax deferral through like-kind exchange treatment for tax purposes. Through the end of 2009, we had invested approximately \$120 million in twenty-six income properties through this process.

With this investment base in income properties, lease revenue of approximately \$9.4 million is projected to be generated annually. This income, along with income from additional net-lease income property investments, is expected to decrease earnings volatility in future years and add to overall financial performance. This has enabled us to enter into the business of building, leasing, and holding in our portfolio select income properties that are strategically located on our lands.

In the third quarter of 2009, we were notified by Barnes & Noble that it would be vacating its store in Lakeland, Florida, upon the expiration of the original lease term at the end of January 2010. The building has since been vacated by Barnes & Noble. The Company is exploring all strategic alternatives on this 18,150 square-foot property. All remaining properties remain leased with the average remaining lease term in excess of 11 years, excluding additional option years. The Barnes & Noble store in Daytona Beach, Florida, which has a lease termination date at the end of January 2011, excluding option years, is the next lease up for renewal. No other leases have less than six-years remaining on the initial lease term.

During the fourth quarter of 2009 RBC Centura Bank closed its branch in Altamonte Springs, Florida. The tenant is obligated on the lease and continues to make lease payments.

We currently have two self-developed projects in the lease up stage. The first project is a two-building 31,000 square-foot flex office space complex located within Gateway Commerce Park. Construction of these buildings was completed in 2008. As of December 31, 2009, there was one tenant under lease for approximately 3,840 square feet, with negotiations ongoing with additional tenant prospects. The second property is the first phase of a 12-acre, 4-lot commercial complex located at the northeast corner of LPGA and Williamson Boulevards in Daytona Beach, Florida. The parcel includes a 22,000 square-foot "Class A" office building. With the exception of additional tenant improvements, which are to be made as vacant space is leased, construction of the building has been completed. Approximately 75% of the building is under lease to two tenants, with both tenants beginning occupancy in the third quarter of 2009.

Golf operations consist of the operation of two golf courses, a clubhouse facility, and food and beverage activities within the LPGA International mixed-use residential community on the west side of Interstate 95, south and east of LPGA Boulevard. The Champions course was designed by Rees Jones and the Legends course was designed by Arthur Hills.

Prior to 2007, golf operations revenues had grown despite an overall decline in golf course revenues in Florida. The Florida golf industry has been hurt by over building of golf courses and hurricane activity in past years. During 2007, we made changes in management within the golf operation looking for improved operating results for the future. The overall weak national and local economies led to continued losses in 2008 and throughout 2009. We believe that improvement in golf course operations will be a function of stronger economic conditions, increased tourist demand, a reduction in new golf course construction which has been experienced in the last several years, and most importantly, increased residential growth in LPGA International and adjoining land to the west and northwest. LPGA International and nearby projects currently under development are planned to contain about 6,000 additional dwelling units. Our efforts to improve revenues and profitability have focused on providing quality products and services while maintaining consistent and stringent cost control for both golf course and food service activities.

Our agricultural operations consist of growing, managing, and selling timber and hay on approximately 10,700 acres of land on the west side of Daytona Beach, Florida. We are currently in the process of converting a significant portion of our timberlands to hay production.

ITEM 7. MANAGEMENT'S DISCUSSION AND ANALYSIS OF FINANCIAL CONDITION AND RESULTS OF OPERATIONS (Continued)

SUMMARY OF 2009 OPERATING RESULTS

For the year ended December 31, 2009, profits totaling \$800,570 were earned, equivalent to \$.14 per share. These profits represented an 83% decline from 2008 calendar year profits of \$4,834,900, equivalent to \$.84 per share. The decrease in profitability was primarily attributable to lower profits from land sales, in addition to substantially higher general and administrative expenses due to increased expenses associated with stock option accruals. A decrease in the price of our stock in 2008 resulted in an addition to income of \$1,208,095, after income taxes, related to reductions in stock option accruals for that year.

We also use Earnings before Depreciation, Amortization, and Deferred Taxes (EBDDT) as a performance measure. Our strategy of investing in income properties through the deferred tax like-kind exchange process produces significant amounts of depreciation and deferred taxes.

The following is the calculation of EBDDT for the 2009 and 2008 fiscal years:

| | <u>Year Ended</u> | |
|--------------------------------------------------------------------------|------------------------------------|------------------------------------|
| | <u>December 31,</u> <u>2009</u> | <u>December 31,</u> <u>2008</u> |
| Net Income | \$ 800,570 | \$4,834,900 |
| Add Back: | | |
| Depreciation and Amortization | 2,771,633 | 2,655,088 |
| Deferred Taxes | 958,932 | 434,037 |
| Earnings before Depreciation, Amortization, and Deferred Taxes | <u>\$4,531,135</u> | <u>\$7,924,025</u> |

EBDDT is calculated by adding depreciation, amortization, and change in deferred income tax to net income, as they represent non-cash charges. EBDDT is not a measure of operating results or cash flows from operating activities as defined by U.S. generally accepted accounting principles. Further, EBDDT is not necessarily indicative of cash availability to fund cash needs and should not be considered as an alternative to cash flow as a measure of liquidity. We believe, however, that EBDDT provides relevant information about operations and is useful, along with net income, for an understanding of our operating results.

EBDDT totaled \$4,531,135 for 2009, with EBDDT totaling \$7,924,025 for 2008. The decrease in EBDDT from the prior year was primarily associated with the lower net income. EBDDT for 2009 included an increase in deferred income taxes of \$669,460 associated with decreased pension liabilities while 2008 EBDDT included a reduction of deferred income taxes of \$780,125 due to increased pension liabilities, with both amounts recorded directly in shareholders equity.

RESULTS OF OPERATIONS

2009 Compared to 2008

REAL ESTATE OPERATIONS

REAL ESTATE SALES

Real estate sales posted a profit of \$1,378,594 on the sale of 16 acres of commercial property for the year ended December 31, 2009. The sales consisted of 14 acres of uplands and 2 acres of wetlands and generated revenues totaling \$2,633,947. The average sales price per upland acre was \$178,274 for the year. During 2008, 24 acres of land were sold, all of which were for commercial uses. These sales consisted of 22 acres of uplands and 2 acres of wetlands and generated total revenues and profits from real estate sales of \$4,565,599 and \$2,972,030, respectively. The average sales price for 2008 per upland acre sold was \$191,390. Real estate sales

ITEM 7. MANAGEMENT'S DISCUSSION AND ANALYSIS OF FINANCIAL CONDITION AND RESULTS OF OPERATIONS (Continued)

costs and expenses totaled \$1,255,353 in 2009 and represented a decline of 21% from costs and expenses amounting to \$1,593,569 during 2008. This decrease was primarily associated with lower cost of sales on the reduced sales volume.

INCOME PROPERTIES

During 2009 income properties revenues increased 4% to \$9,570,129, with revenues in 2008 totaling \$9,235,775. The gain in revenues for the year was the result of lease revenues from the new self-developed Class A office building located in Daytona Beach, Florida coupled with full year revenues from the Charlotte, North Carolina, Harris Teeter supermarket building which was acquired in April 2008. These revenue increases were more than offset by a 20% rise in income properties costs and expenses, resulting in a 1% fall in profits. Profits from income properties amounted to \$7,299,202 and \$7,337,494 for 2009 and 2008, respectively. The increase in costs and expenses, to \$2,270,927 in 2009, was attributed to costs, including depreciation, from the office building along with costs associated with the Gateway Commerce Park flex buildings and additional depreciation from full year ownership of the Harris Teeter supermarket building. Income properties costs and expenses were \$1,898,281 in 2008.

GOLF OPERATIONS

Golf operations posted a loss of \$1,920,000 in 2009. This loss represented a 4% increase over the loss of \$1,843,094 realized in 2008. Revenues totaling \$4,723,825 were generated during 2009, a 1% increase over prior year's revenues amounting to \$4,671,618. The revenue gain was achieved on a 6% increase in food and beverage revenues, offset by a 1% decline in revenues from golfing activities. The number of golf rounds played during 2009 rose 23% over 2008, but was offset by a 17% reduction in the average rate paid per round played. Golf operations costs and expenses increased 2% over the prior year to \$6,643,825, and included a one time charge of approximately \$115,000 for the settlement of a lawsuit. Excluding that charge golf costs and expenses were in line with 2008 costs and expenses totaling \$6,514,712.

GENERAL, CORPORATE, AND OTHER

Profits on sales of undeveloped real estate interests during 2009 totaled \$35,839 on the release of mineral surface entry rights on 18 acres of land. In 2008, the release of mineral surface entry rights on 1,344 acres generated profits amounting to \$1,369,696.

When compared to the prior year interest and other income declined 73% to \$195,609, with interest and other income of \$712,496 earned in 2008. This decrease was the result of lower investment interest earned on decreased investment securities, lower interest earned on mortgage notes receivable due to the non-accrual of interest on delinquent notes and decreased interest on funds held for reinvestment through the like-kind exchange process.

General and administrative expenses rose significantly in 2009 to \$5,744,659 compared to \$2,812,803 in 2008. Increased stock option accruals accounted for \$2,220,206 of the increase. This variance resulted from a significant decrease in the price of Company stock during 2008. Also contributing to the higher expenses were approximately \$735,000 of legal and other costs associated with a shareholder lawsuit and proxy contest.

SUMMARY OF 2008 OPERATING RESULTS

For the year ended December 31, 2008, profits of \$4,834,900 were earned, equivalent to \$0.84 per share. These profits represented a 64% decrease from calendar year 2007 profits totaling \$13,532,838, equivalent to \$2.37 per share. The downturn was primarily attributable to lower profits from commercial land sales and

ITEM 7. MANAGEMENT’S DISCUSSION AND ANALYSIS OF FINANCIAL CONDITION AND RESULTS OF OPERATIONS (Continued)

increased losses from golf operations. Earnings from income properties partially offset these declines with a 6% increase in earnings resulting from the Harris Teeter property acquired in April 2008. General and administrative expenses declined in 2008 compared to 2007 primarily as a result of the net change in stock option expenses resulting from a decrease in the price of our stock in 2008 and an increase in stock price during 2007.

We also use Earnings before Depreciation, Amortization, and Deferred Taxes (EBDDT) as a performance measure. Our strategy of investing in income properties through the deferred tax like-kind exchange process produces significant amounts of depreciation and deferred taxes.

The following is the calculation of EBDDT for the 2008 and 2007 fiscal years:

| | <u>Year Ended</u> | |
|----------------------------------------------------------------------|------------------------------|------------------------------|
| | <u>December 31, 2008</u> | <u>December 31, 2007</u> |
| Net Income | \$4,834,900 | \$13,532,838 |
| Add Back: | | |
| Depreciation and Amortization | 2,655,088 | 2,466,981 |
| Deferred Taxes | 434,037 | 3,390,812 |
| Earnings before Depreciation, Amortization, and Deferred Taxes | <u>\$7,924,025</u> | <u>\$19,390,631</u> |

EBDDT is calculated by adding depreciation, amortization, and change in deferred income tax to net income, as they represent non-cash charges. EBDDT is not a measure of operating results or cash flows from operating activities as defined by U.S. generally accepted accounting principles. Further, EBDDT is not necessarily indicative of cash availability to fund cash needs and should not be considered as an alternative to cash flow as a measure of liquidity. We believe, however, that EBDDT provides relevant information about operations and is useful, along with net income, for an understanding of our operating results.

EBDDT totaled \$7,924,025 for the year ended December 31, 2008. This EBDDT represented a 59% decrease from EBDDT of \$19,390,631 posted for the 2007 fiscal year. The downturn was the result of the lower net income coupled with a reduction in the add-back for deferred taxes on the reduced real estate sales volume and the associated deferred tax gains. EBDDT for 2008 included a reduction for deferred income taxes of \$780,125 associated with increased pension liabilities charged to shareholders’ equity.

RESULTS OF OPERATIONS

2008 Compared to 2007

REAL ESTATE OPERATIONS

REAL ESTATE SALES

During calendar year 2008, 24 acres of land were sold, all of which were for commercial uses. These sales consisted of 22 acres of uplands and 2 acres of wetlands and generated total revenues and profits from real estate sales of \$4,565,599 and \$2,972,030, respectively. The average sales price per acre of upland acres sold was \$191,390 for the year. Revenues and profits from real estate sales were down significantly when compared to the revenues totaling \$25,947,800 and profits of \$19,013,088 generated during 2007 on the sale of 486 acres of land, of which 263 acres were upland acres. Sales during 2007 included the charitable contribution of 25 acres of land at a value of \$1,500,000 and \$1,900,000 of impact fee credits. The average sales price of commercial acreage was \$229,675 per upland acre during 2007 with the price of residential acres sold averaging \$47,087 per upland

ITEM 7. MANAGEMENT'S DISCUSSION AND ANALYSIS OF FINANCIAL CONDITION AND RESULTS OF OPERATIONS (Continued)

acre. Costs and expenses from real estate sales declined substantially in 2008 compared to 2007 on the significant volume decrease. Costs and expenses in 2007 also included higher costs associated with both the charitable contribution and impact fee credits.

INCOME PROPERTIES

Income properties produced a profit of \$7,337,494 on revenues totaling \$9,235,775 for the twelve months of 2008. These profits and revenues represented increases of 5% and 6%, respectively, when compared to the prior year. The increases were primarily generated on the April 2008 addition of the Harris Teeter supermarket located in Charlotte, North Carolina. During 2007 profits totaled \$6,956,345 on revenues of \$8,725,096.

GOLF OPERATIONS

Golf operations posted a loss of \$1,843,094 during 2008, a 5% increase over the loss totaling \$1,749,191 recorded in 2007. The increased loss was realized on a 9% decrease in revenues. Both golf and food and beverage activities contributed to the revenue decline as golf activities revenues fell 4% while revenues from food and beverage activities decreased 17%. The number of golf rounds played during 2008 was down 12% when compared to the prior year, with the average greens fee per round played increasing 6%. Revenues totaled \$4,671,618 in 2008 and \$5,160,070 in 2007. Partially offsetting the lower revenue was a 6% drop in costs and expenses, with costs and expenses totaling \$6,514,712 in 2008 and \$6,909,261 in the prior year. In addition to the reduced cost of sales associated with the lower volume, the decline in golf costs and expenses was also attributed to lower payroll costs, particularly related to golf activities.

GENERAL, CORPORATE, AND OTHER

Profits on sales of undeveloped real estate interests during 2008 totaled \$1,369,696 on the release of mineral surface entry rights on 1,344 acres of land. In 2007, the release of mineral surface entry rights on 4,049 acres generated profits of \$2,579,827.

During 2008, interest and other income totaled \$712,496 and represented a 7% gain over the interest and other income of \$663,231 recorded in calendar year 2007. Higher interest earned on increased balances from mortgage notes receivable, from year-end 2007 land sales, and \$100,000 of income from the capture of a deposit on a canceled land sales transaction accounted for this gain. Partially offsetting these items was lower interest earned on investment securities.

General and administrative expenses decreased 54% for calendar year 2008 to \$2,812,803. The significant variance was primarily the result of a \$3,308,442 net change in stock option expenses resulting from a decrease in the price of our stock in 2008 and an increase in stock price during 2007. Somewhat offsetting the decrease in general and administrative expenses were higher legal and other costs related to shareholder relations. These costs approximated \$273,000 during 2008. General and administrative expenses totaled \$6,170,242 during 2007.

LIQUIDITY AND CAPITAL RESOURCES

Cash and investments securities totaled \$5,233,533 at December 31, 2009, with no cash being held for reinvestment through the like-kind exchange process. This amount represents a decrease of \$878,887 from the balance of \$6,112,420 at year end 2008. This decline, along with a \$4,952,527 increase in the balance on the Company's \$20 million line of credit, represents a use of funds totaling \$5,831,414 for the year. The balance on the line of credit was \$6,970,422 and \$2,017,895 at December 31, 2009 and 2008, respectively.

The uses of these funds during the year were centered on construction and development activities, continued hay conversion, the acquisition of land and the payment of dividends and income taxes. The completion of the

ITEM 7. MANAGEMENT'S DISCUSSION AND ANALYSIS OF FINANCIAL CONDITION AND RESULTS OF OPERATIONS (Continued)

22,000 square-foot Class A office building along with the completion of the construction of a road, Tournament Drive, on our core lands adjacent to LPGA Boulevard in Daytona Beach, Florida were the primary uses of the \$3,200,000 expended for construction and development, while hay conversion costs approximated \$1,200,000.

The Company reinvested approximately \$1,900,000 with the acquisition of 9 acres of land through Internal Revenue Code Section 1033 involuntary conversion under threat of condemnation tax deferral provisions. We plan to reinvest an additional \$9,100,000 in future years through this process, including the scheduled purchase of 10 acres in 2010 for approximately \$2,700,000.

The payment of income taxes amounted to \$1,900,000 million with the payment of dividends totaling \$1,700,000, equivalent to \$.30 per share.

During August 2009 the Company completed the reacquisition of a 6 acre parcel of land through the foreclosure of a mortgage note receivable. The mortgage note receivable was written-off with the land recorded in Land and Development costs in the amount of \$1,961,324. An additional mortgage note receivable was foreclosed in early November. This mortgage note, which was secured by 317 acres of property, was also written-off with the land recorded in Land and Development costs in the amount of \$2,606,412. There was no gain or loss recognized on either transaction. In determining impairment on the notes receivable we evaluated the fair market value of the property collateralizing the loan based on our knowledge of the Daytona Beach real estate market as the largest landowner, and obtained independent appraisals to support the values.

During the fourth quarter of 2008, our Board of Directors authorized a program to repurchase shares of our common stock having an aggregate value of up to \$8,000,000. The authorization permits us to effect the repurchases from time to time through a variety of methods including open market repurchases and privately negotiated transactions. The repurchase plan is intended to be funded through reduced dividend payments in the future. We have no plans to increase debt to fund the repurchase plan. Through March 1, 2010, 4,660 shares had been repurchased at a total cost of \$104,647, with no repurchases occurring in the fourth quarter of 2009.

Capital expenditures planned for 2010 are projected to be approximately \$6,100,000. These expenditures include \$2,700,000 for the acquisition of approximately 10 acres of land through the IRS Section 1033 process, mentioned earlier, \$2,200,000 for the continuation of our hay conversion and \$880,000 for funding of road construction.

Additional funds will be expended on tenant improvements on our self-developed income properties and the recently vacated property in Lakeland, Florida as leases are secured; other than the \$880,000 commitment to road construction, capital expenditures can be reduced at our discretion based on operating cash needs.

The funds for road construction come as the results of efforts at the end of 2008 to obtain federal stimulus dollars to extend Dunn Avenue, a major east/west thoroughfare bridging Interstate 95, to provide improved access to Company lands. In June 2009, the Company entered into a cost sharing agreement with the City of Daytona Beach and the County of Volusia that will allow the use of federal funds to build this road project. The Company's cost participation, originally projected to be \$1,125,000, is now estimated at approximately \$880,000.

Capital to fund the planned expenditures in 2010 is expected to be provided from cash and investment securities (as they mature), operating activities, and financing sources that are currently in place, including the revolving line of credit. On March 9, 2010, we received a commitment letter for the renewal of the line of credit, which comes due March 29, 2010, for the requested amount of \$15 million. The term of the renewal, which is unsecured, is for a one year or two year period, at our option and will expire in March 2011 or March 2012, depending on which option is selected. The interest rate will be at the 1-month LIBOR plus a spread of 281 – 310 basis points, with commitment fees and unused capacity fees of .25 – .50% based on the option chosen.

ITEM 7. MANAGEMENT’S DISCUSSION AND ANALYSIS OF FINANCIAL CONDITION AND RESULTS OF OPERATIONS (Continued)

We also believe that we have the ability, if needed, to borrow on a non-recourse basis against our existing income properties, which are all free of debt as of the date of this filing. As additional funds become available through qualified sales, we expect to reinvest in additional real estate opportunities.

Our Board of Directors and management continually review the allocation of any excess capital with the goal of providing the highest long-term return for all shareholders. The reviews consider various alternatives, including increasing or decreasing regular dividends, declaring special dividends, repurchasing stock, and retaining funds for reinvestment, including road development and hay conversion of timber lands. The Board of Directors has reaffirmed its support for the stated business plan of reinvesting agricultural land sales proceeds into 1031 tax-deferred income-producing properties, self-development of income properties, and the creation of infrastructure and entitlements on Company lands to increase long-term shareholder value.

At its regular Board of Directors meeting on January 27, 2010, the Company declared a dividend of \$.01 per share. The Company recognizes the importance of providing a quarterly dividend and maintaining that commitment during the recent economic downturn. The Board of Directors believed it appropriate to reduce the dividend at this time, from \$.05 paid in the prior quarter, in order to conserve capital due to the continuing weakness in the real estate industry.

CONTRACTUAL OBLIGATIONS AND COMMITMENTS

We have various contractual obligations which are recorded as liabilities in our consolidated financial statements. Other items, such as certain development obligations, are not recognized as liabilities in our consolidated financial statements, but are required to be disclosed.

The following table summarizes our significant contractual obligations and commercial commitments on an undiscounted basis at December 31, 2009, and the future periods in which such obligations are expected to be settled in cash. In addition, the table reflects the timing of principal and interest payments on outstanding borrowings.

PAYMENT DUE BY PERIOD

| <u>Contractual Obligations</u> | <u>Total</u> | <u>Less Than 1 Year</u> | <u>1-3 Years</u> | <u>3-5 Years</u> | <u>More Than 5 Years</u> |
|------------------------------------|-------------------|-------------------------|------------------|------------------|--------------------------|
| | \$ | \$ | \$ | \$ | \$ |
| Long-Term Debt Obligations | 14,246,955 | 7,669,524 | 6,577,431 | — | — |
| Operating Leases Obligations | 6,759,552 | 709,898 | 1,120,768 | 1,095,553 | 3,833,333 |
| Development Obligations | 880,000 | 880,000 | — | — | — |
| Total | <u>21,886,507</u> | <u>9,259,422</u> | <u>7,698,199</u> | <u>1,095,553</u> | <u>3,833,333</u> |

CRITICAL ACCOUNTING POLICIES

The profit on sales of real estate is accounted for in accordance with the provisions of the Accounting for Sales of Real Estate Topic of FASB ASC. We recognize revenue from the sale of real estate at the time the sale is consummated unless the property is sold on a deferred payment plan and the initial payment does not meet established criteria or we retain continuing involvement with the property. A majority of our land sales contracts contain an anti-speculation clause. This clause requires the buyer to begin construction of their project within a specified period of time. If this requirement is not met, we have the right, but not the obligation, to repurchase the property at its original sales price.

ITEM 7. MANAGEMENT'S DISCUSSION AND ANALYSIS OF FINANCIAL CONDITION AND RESULTS OF OPERATIONS (Continued)

All transactions closed in 2009 and 2008 met the criteria established under the Accounting for Sales of Real Estate Topic of FASB ASC, and no income was deferred from the transactions at December 31, 2009.

Prior to 2007, we closed transactions for which we had post-closing obligations to provide off-site utilities and/or road improvements and thus a portion of the revenues and profits were deferred. Full cash payment was received at closing, and warranty deeds were transferred and recorded. The sales contracts did not provide any offsets, rescission, or buy-back if the improvements were not made. Total profits deferred at December 31, 2006 on these transactions amounted to \$563,467. During 2007, all post-closing obligations were completed, and the \$563,467 of profits deferred at December 31, 2006, was recognized during 2007.

We acquire income properties with long-term leases in place. Upon acquisition, the portion of the purchase price which represents the market value associated with the lease is allocated to an intangible asset. The amount of the intangible asset represents the cost of replacing the tenant should the lease be discontinued. Factors such as vacancy period, tenant improvements, and lease commissions, among others, are considered in calculating the intangible asset. The intangible asset is amortized over the remaining life of the lease at the time of acquisition. At December 31, 2009, the intangible asset associated with the income properties totaled \$4,588,649 net of amortization of \$2,007,891. At December 31, 2008 and 2007 the intangible assets totaled \$5,009,819 and \$4,717,699, respectively. These amounts were net of amortization of \$1,586,721 and \$1,174,356 for 2008 and 2007, respectively.

In accordance with the Accounting for the Impairment or Disposal of Long-Lived Assets Topic of FASB ASC we have reviewed the recoverability of long-lived assets, including real estate development, income properties, and other property, plant, and equipment for impairment whenever events or changes in circumstances indicate that the carrying amount of an asset may or may not be recoverable. Long-lived assets are evaluated for impairment by using an undiscounted cash flow approach which considers future estimated capital expenditures. Impairment on long-lived assets is measured at fair value by estimating discounted future operating cash flow and sales price, less cost to sell. There has been no impairment of long-lived assets reflected in the consolidated financial statements.

At the time our debt was refinanced in 2002, we entered into an interest rate swap agreement. This swap arrangement changes the variable-rate cash flow exposure on the debt obligations to fixed cash flows so that we can manage fluctuations in cash flows resulting from interest rate risk. This swap arrangement essentially creates the equivalent of fixed-rate debt. The above referenced transaction is accounted for under the Accounting for Derivative Instruments and Certain Hedging Activities Topic of FASB ASC. The accounting requires the derivative to be recognized on the balance sheet at its fair value and the changes in fair value to be accounted for as other comprehensive income or loss.

We measure the ineffectiveness of the interest rate swap derivative by comparing the present value of the cumulative change in the expected future cash flows on the variable leg of the swap with the present value of the cumulative change in the expected future interest cash flows on the floating rate liability. This measure resulted in no ineffectiveness for the three years ended December 31, 2009. A liability in the amount of \$685,513 and \$947,765 at December 31, 2009 and 2008, respectively, has been established on our balance sheet. The change in fair value, net of applicable taxes, in the cumulative amount of \$421,076 and \$582,165 at December 31, 2009 and 2008, respectively, has been recorded as accumulated other comprehensive loss, a component of shareholders' equity.

We maintain a stock option plan pursuant to which 500,000 shares of our common stock may be issued. The current Plan was approved at the April 25, 2001 Shareholders' meeting. Under the Plan, the option exercise price equals the stock market price on the date of grant.

ITEM 7. MANAGEMENT'S DISCUSSION AND ANALYSIS OF FINANCIAL CONDITION AND RESULTS OF OPERATIONS (Continued)

The options generally vest over five years and all expire after ten years. The Plan provides for the grant of (1) incentive stock options, which satisfy the requirements of Internal Revenue Code (IRC) Section 422, and (2) non-qualified options, which are not entitled to favorable tax treatment under IRC Section 422. No optionee may exercise incentive stock options in any calendar year for shares of common stock having a total market value of more than \$100,000 on the date of grant (subject to certain carryover provisions).

In connection with the grant of non-qualified options, a stock appreciation right for each share covered by the option may also be granted. The stock appreciation right will entitle the optionee to receive a supplemental payment, which may be paid in whole or in part in cash or in shares of common stock, equal to a portion of the spread between the exercise price and the fair market value of the underlying shares at the time of exercise. All options granted to date have been non-qualified options.

Both our stock options and stock appreciation rights are liability classified awards under the Share Based Payment Topic of FASB ASC and are required to be remeasured to fair value at each balance sheet date until the award is settled.

ITEM 7A. QUANTITATIVE AND QUALITATIVE DISCLOSURES ABOUT MARKET RISK

The principal market risk (i.e., the risk of loss arising from adverse changes in market rates and prices) to which we are exposed is interest rates. The objective of our asset management activities is to provide an adequate level of liquidity to fund operations and capital expansion, while minimizing market risk. We utilize overnight sweep accounts and short-term investments to minimize the interest rate risk. We do not actively invest or trade in equity securities. We do not believe that its interest rate risk related to cash equivalents and short-term investments is material due to the nature of the investments.

We manage our debt, considering investment opportunities and risk, tax consequences, and overall financial strategies. We are primarily exposed to interest rate risk on our \$8,000,000 (\$6,239,967 outstanding at December 31, 2009) long-term mortgage. The borrowing bears a variable rate of interest based on market rates. Management's objective is to limit the impact of interest rate changes on earnings and cash flows and to lower the overall borrowing costs. To achieve this objective, we entered into an interest rate swap agreement during the second quarter of 2002. A hypothetical change in the interest rate of 100 basis points (i.e. 1%) would not materially affect our financial position, results of operations, or cash flows.

ITEM 8. FINANCIAL STATEMENTS AND SUPPLEMENTARY DATA

The Company's Consolidated Financial Statements appear beginning on page F-1 of this report. See Item 15 of this report.

ITEM 9. CHANGES IN AND DISAGREEMENTS WITH ACCOUNTANTS ON ACCOUNTING AND FINANCIAL DISCLOSURE

There have been no disagreements with our accountants on accounting and financial disclosures.

ITEM 9A. CONTROLS AND PROCEDURES

DISCLOSURE CONTROLS AND PROCEDURES

As of the end of the period covered by this report, an evaluation, as required by rules 13(a)-15 and 15(d)-15 of the Securities Exchange Act of 1934 (the "Exchange Act") was carried out under the supervision and with the participation of the Company's management, including the Chief Executive Officer ("CEO") and Chief Financial

ITEM 9A. CONTROLS AND PROCEDURES (Continued)

Officer (“CFO”), of the effectiveness of the Company’s disclosure controls and procedures (as defined in Rules 13a-15(e) or 15d-15(e) of the Exchange Act). Based on that evaluation, the CEO and CFO have concluded that the design and operation of the Company’s disclosure controls and procedures are effective to ensure that information required to be disclosed by the Company in reports that it files or submits under the Exchange Act is recorded, processed, summarized, and reported within the time periods specified in Securities and Exchange Commission rules and forms, and to provide reasonable assurance that information required to be disclosed by the Company in such reports is accumulated and communicated to the Company’s management, including its CEO and CFO, as appropriate to allow timely decisions regarding required disclosure.

MANAGEMENT’S REPORT ON INTERNAL CONTROL OVER FINANCIAL REPORTING

The management of the Company is responsible for establishing and maintaining adequate internal control over financial reporting as defined in Rules 13a-15(f) and 15d-15(f) under the Exchange Act.

The Company’s management assessed the effectiveness of the Company’s internal control over financial reporting as of December 31, 2009. In conducting this assessment, it used the criteria set forth by the Committee of Sponsoring Organizations of the Treadway Commission (COSO) in Internal Control-Integrated Framework. Based on management’s assessment and those criteria, management believes that the Company has maintained effective internal control over financial reporting as of December 31, 2009. The report of the independent registered accounting firm that audited the financial statements included in this Annual Report on Form 10-K is incorporated herein at Item 15.

CHANGES IN INTERNAL CONTROL OVER FINANCIAL REPORTING

There were no changes in the Company’s internal control over financial reporting (as defined in Rules 13a-15(f) or 15d-15(f) of the Exchange Act) during the fourth fiscal quarter covered by this report that have materially affected, or are reasonably likely to materially affect, the Company’s internal control over financial reporting.

LIMITATIONS ON THE EFFECTIVENESS OF INTERNAL CONTROLS

The Company’s internal control over financial reporting is designed to provide reasonable assurance regarding the reliability of financial reporting and the preparation of financial statements for external purposes in accordance with U.S. generally accepted accounting principles. All internal control systems, no matter how well designed, have inherent limitations. Therefore, even those systems determined to be effective can provide only reasonable assurance with respect to financial statement preparation and presentation.

Also, projections of any evaluation of effectiveness to future periods are subject to the risk that controls may become inadequate because of changes in conditions, or that the degree of compliance with the policies or procedures may deteriorate.

ITEM 9B. OTHER INFORMATION

None.

PART III

ITEM 10. DIRECTORS, EXECUTIVE OFFICERS, AND CORPORATE GOVERNANCE

The information required to be set forth herein, except for the information included under the heading "Executive Officers of the Registrant" below, is included in the Company's definitive proxy statement for its 2010 annual shareholders' meeting to be filed with the SEC within 120 days after the end of the registrant's fiscal year ended December 31, 2009 (the "Proxy Statement"), which sections are incorporated herein by reference.

EXECUTIVE OFFICERS OF THE REGISTRANT

The executive officers of the Company, their ages at January 31, 2009, their business experience during the past five years, and the year first elected as an executive officer of the Company are as follows:

William H. McMunn, 63, chairman of the board from April 2008 to June 2009, president of the Company since January 2000, and chief executive officer since April 2001. Executive officer since 2000.

Bruce W. Teeters, 64, senior vice president-finance and treasurer since January 1988. Executive officer since 1988.

All of the above are elected annually as provided in the Company's By-laws.

ITEM 11. EXECUTIVE COMPENSATION

The information required to be set forth herein is included in the Proxy Statement, which sections are incorporated herein by reference.

ITEM 12. SECURITY OWNERSHIP OF CERTAIN BENEFICIAL OWNERS AND MANAGEMENT AND RELATED STOCKHOLDER MATTERS

EQUITY COMPENSATION PLAN INFORMATION

The Company maintains the 2001 Stock Option Plan ("The Plan") pursuant to which 500,000 shares of the Company's common stock may be issued. The Plan in place was approved at the April 25, 2001 shareholders' meeting. Under the Plan, the option exercise price equals the stock market price on the date of grant. The options vest over five years and all expire after ten years. The Plan provides for the grant of (1) incentive stock options, which satisfy the requirements of Internal Revenue Code (IRC) Section 422, and (2) non-qualified options, which are not entitled to favorable tax treatment under IRC Section 422. No optionee may exercise incentive stock options in any calendar year for shares of common stock having a total market value of more than \$100,000 on the date of grant (subject to certain carryover provisions). In connection with the grant of non-qualified options, a stock appreciation right for each share covered by the option may also be granted. The stock appreciation right will entitle the optionee to receive a supplemental payment, which may be paid in whole or in part in cash or in shares of common stock equal to a portion of the spread between the exercise price and the fair market value of the underlying share at the time of exercise. All options granted to date have been non-qualified options.

| <i>Plan Category</i> | <u>Number of Securities to be Issued Upon Exercise of Outstanding Options, Warrants, and Rights</u> | <u>Weighted Average Exercise Price of Outstanding Options, Warrants, and Rights</u> | <u>Number of Securities Remaining Available for Future Issuance</u> |
|-------------------------------------------------------------------|---------------------------------------------------------------------------------------------------------------------|---------------------------------------------------------------------------------------------------------|-------------------------------------------------------------------------------------|
| Equity Compensation Plans Approved by Security Holders: | 256,400 | \$52.67 | 22,400 |
| Equity Compensation Plans not Approved by Security Holders: | — | — | — |
| TOTAL | <u>256,400</u> | <u>\$52.67</u> | <u>22,400</u> |

ITEM 12. SECURITY OWNERSHIP OF CERTAIN BENEFICIAL OWNERS AND MANAGEMENT AND RELATED STOCKHOLDER MATTERS (Continued)

The other information required to be set forth herein is included in the Proxy Statement, which sections are incorporated herein by reference.

ITEM 13. CERTAIN RELATIONSHIPS AND RELATED TRANSACTIONS, AND DIRECTOR INDEPENDENCE

The information required to be set forth herein is included in the Proxy Statement, which sections are incorporated herein by reference.

ITEM 14. PRINCIPAL ACCOUNTING FEES AND SERVICES

The information required to be set forth herein is included in the Proxy Statement, which section is incorporated herein by reference.

PART IV

ITEM 15. EXHIBITS, FINANCIAL STATEMENT SCHEDULES

1. FINANCIAL STATEMENTS

The following financial statements are filed as part of this report:

| | <u>Page No.</u> |
|-------------------------------------------------------------------------------------------------------------------------------|-----------------|
| Reports of Independent Registered Public Accounting Firm | F-2 |
| Consolidated Balance Sheets as of December 31, 2009 and 2008 | F-4 |
| Consolidated Statements of Income for the three years ended December 31, 2009 | F-5 |
| Consolidated Statements of Shareholders' Equity and Comprehensive Income for the three years ended December 31, 2009 | F-6 |
| Consolidated Statements of Cash Flows for the three years ended December 31, 2009 | F-7 |
| Notes to Consolidated Financial Statements | F-9 |

2. FINANCIAL STATEMENT SCHEDULES

Included in Part IV on Form 10-K:

Schedule III—Real Estate and Accumulated Depreciation

Other Schedules are omitted because of the absence of conditions under which they are required, materiality, or because the required information is given in the financial statements or notes thereof.

3. EXHIBITS

See Index to Exhibits on page 35 of this Annual Report on Form 10-K.

SIGNATURES

Pursuant to the requirements of Section 13 or 15(d) of the Securities Exchange Act of 1934, the registrant has duly caused this report to be signed on its behalf by the undersigned, thereunto duly authorized.

CONSOLIDATED-TOMOKA LAND CO. (Registrant)

03/12/10 By: /s/ WILLIAM H. MCMUNN
William H. McMunn
President and Chief Executive Officer

Pursuant to the requirements of the Securities Exchange Act of 1934, this report has been signed below by the following persons on behalf of the Registrant and in the capacities and on the dates indicated.

3/12/10 President and Chief Executive Officer /s/ WILLIAM H. MCMUNN
(Principal Executive Officer), and Director

3/12/10 Senior Vice President-Finance, Treasurer /s/ BRUCE W. TEETERS
(Principal Financial and Accounting
Officer)

3/12/10 Chairman of the Board, Director /s/ WILLIAM J. VOGES

3/12/10 Director /s/ JOHN C. ADAMS, JR.

3/12/10 Director /s/ JOHN J. ALLEN

3/12/10 Director /s/ WILLIAM H. DAVISON

3/12/10 Director /s/ GERALD L. DEGOOD

3/12/10 Director /s/ JEFFRY B. FUQUA

3/12/10 Director /s/ ALLEN C. HARPER

3/12/10 Director /s/ WILLIAM L. OLIVARI

3/12/10 Director /s/ LINDA LOOMIS SHELLEY

**SECURITIES AND EXCHANGE COMMISSION
WASHINGTON, DC 20549**

**EXHIBITS
TO
FORM 10-K**

**ANNUAL REPORT PURSUANT TO SECTION 13 OR 15(d)
OF THE SECURITIES EXCHANGE ACT OF 1934**

**FOR THE FISCAL YEAR ENDED DECEMBER 31, 2009
COMMISSION FILE NO. 001-11350**

**CONSOLIDATED-TOMOKA LAND CO.
(Exact name of registrant as specified in the charter)**

EXHIBIT INDEX

| | | <u>Page No.</u> |
|------------|----------------------------------------------------------------------------------------------------------------------------------------------------------------------------------------------------------------------------------------------------------------------------------------------------------|---------------------|
| (3.1) | Amended and Restated Articles of Incorporation of Consolidated-Tomoka Land Co., dated October 28, 2009 filed as Exhibit 3.1 to registrants Current Report on Form 8-K filed October 30, 2009, and incorporated herein by this reference. | * |
| (3.2) | Amended and Restated By Laws of Consolidated-Tomoka Land Co., dated October 29, 2009, filed as Exhibit 3.2 to the registrant's Current Report on Form 8-K filed October 30, 2009, and incorporated herein by this reference. | * |
| 10 | Material Contracts: | |
| (10.3) | The Consolidated-Tomoka Land Co. 2001 Stock Option Plan effective April 25, 2001, filed with the registrant's Registration Statement on Form S-8 filed on June 20, 2001 and incorporated by this reference (File No. 333-63400). | * |
| (10.4) | Lease Agreement dated August 28, 1997, between the City of Daytona Beach and Indigo International Inc., a wholly owned subsidiary of Consolidated-Tomoka Land Co., filed with the registrants Annual Report on Form 10-K for the year ended December 31, 1997, and incorporated by this reference. | * |
| (10.5) | Development Agreement dated August 18, 1997 between the City of Daytona Beach and Indigo International Inc., a wholly owned subsidiary of Consolidated-Tomoka Land Co., filed with the registrant's Annual Report on Form 10-K for the year ended December 31, 1997, and incorporated by this reference. | * |
| (10.6) | Master Loan and Security Agreement between Consolidated-Tomoka Land Co. and SunTrust Bank dated July 1, 2002, filed with the registrant's Quarterly Report on Form 10-Q for the quarter ended June 30, 2002, and incorporated by this reference. | * |
| (10.7) | Amendment dated March 29, 2007 to Master Loan and Security Agreement dated May 31, 2002, between Consolidated-Tomoka Land Co. and SunTrust Bank, filed with the registrant's Current Report on Form 8-K on April 3, 2007, and incorporated by this reference. | * |
| (10.8) | Master Loan and Security Agreement between Consolidated-Tomoka Land Co. and SunTrust Bank dated May 31, 2002, filed with the registrants Quarterly Report on Form 10-Q for the quarter ended June 30, 2002, and incorporated by this reference. | * |
| (10.9) | Amendment dated March 29, 2007 to Master Loan and Security Agreement dated July 1, 2002, between Consolidated-Tomoka Land Co., and SunTrust Bank, filed with the registrant's Current Report on Form 8-K on April 3, 2007, and incorporated by this reference. | * |
| (10.10) | International Swap Dealers Association, Inc. Master Agreement dated April 8, 2002, between Consolidated-Tomoka Land Co. and SunTrust Bank, filed with the registrant's Quarterly Report on Form 10-Q for the quarter ended June 30, 2002, and incorporated by this reference. | * |
| (10.11) | Confirmation of Interest Rate Transaction dated April 9, 2002, between Consolidated-Tomoka Land Co. and SunTrust Bank, filed with the registrant's Quarterly Report on Form 10-Q for the quarter ended June 30, 2002, and incorporated by this reference. | * |
| ** (10.12) | Form of Stock Option and SAR Agreement under the Consolidated-Tomoka Land Co. 2001 Stock Option Plan filed with the registrant's Annual Report on Form 10-K for the year ended December 31, 2007, and incorporated by this reference. | * |
| ** (10.14) | Separation Agreement, Waiver and Full Release dated December 18, 2009, between Consolidated-Tomoka Land Co., and Robert F. Apgar, filed with the registrant's Current Report on Form 8-K on December 21, 2009, and incorporated by this reference. | |

EXHIBIT INDEX (CONTINUED)

| | <u>Page No.</u> |
|-----------------------------------------------------------------------------------------------------------------------------|---------------------|
| (21) Subsidiaries of the Registrant. | * |
| (23) Consent of Independent Registered Public Accounting Firm. | * |
| (31.1) Certification furnished pursuant to Section 302 of Sarbanes-Oxley Act of 2002. | * |
| (31.2) Certification furnished pursuant to Section 302 of Sarbanes-Oxley Act of 2002. | * |
| (32.1) Certification pursuant to 18 U.S.C. Section 1350, adopted pursuant to Section 906 of the Sarbanes-Oxley Act of 2002. | * |
| (32.2) Certification pursuant to 18 U.S.C. Section 1350, adopted pursuant to Section 906 of the Sarbanes-Oxley Act of 2002. | * |
| <hr/> | |
| * - Incorporated by Reference | |
| ** - Management Contract or Compensatory Plan or Arrangement | |

Consent of Independent Registered Public Accounting Firm

**To the Board of Directors
Consolidated-Tomoka Land Co.:**

We consent to the incorporation by reference in Registration Statements (Nos. 033-62679 and 333-63400) on Form S-8 of Consolidated-Tomoka Land Co. and subsidiaries of our reports dated March 12, 2010, with respect to the consolidated balance sheets of Consolidated-Tomoka Land Co. and subsidiaries as of December 31, 2009 and 2008, and the related consolidated statements of income, shareholders' equity and comprehensive income and cash flows for each of years in the three-year period ended December 31, 2009 and the related financial statement schedule and the effectiveness of internal control over financial reporting as of December 31, 2009, which reports appear in the December 31, 2009 annual report on Form 10-K of Consolidated-Tomoka Land Co.

/s/ KPMG LLP
Orlando, Florida
March 12, 2010
Certified Public Accountants

CERTIFICATIONS

I, William H. McMunn, certify that:

1. I have reviewed this annual report on Form 10-K of Consolidated-Tomoka Land Co.;
2. Based on my knowledge, this report does not contain any untrue statement of a material fact or omit to state a material fact necessary to make the statements made, in light of the circumstances under which such statements were made, not misleading with respect to the period covered by this report;
3. Based on my knowledge, the financial statements, and other financial information included in this report, fairly present in all material respects the financial condition, results of operations and cash flows of the registrant as of, and for, the periods presented in this report;
4. The registrant's other certifying officer and I are responsible for establishing and maintaining disclosure controls and procedures (as defined in Exchange Act Rules 13a-15(e) and 15d-15(e)) and internal control over financial reporting (as defined in Exchange Act Rules 13a-15(f) and 15d-15(f)) for the registrant and have:
 - (a) Designed such disclosure controls and procedures, or caused such disclosure controls and procedures to be designed under our supervision, to ensure that material information relating to the registrant, including its consolidated subsidiaries, is made known to us by others within those entities, particularly during the period in which this report is being prepared;
 - (b) Designed such internal control over financial reporting, or caused such internal control over financial reporting to be designed under our supervision, to provide reasonable assurance regarding the reliability of financial reporting and the preparation of financial statements for external purposes in accordance with generally accepted accounting principles;
 - (c) Evaluated the effectiveness of the registrant's disclosure controls and procedures and presented in this report our conclusions about the effectiveness of the disclosure controls and procedures, as of the end of the period covered by this report based on such evaluation; and
 - (d) Disclosed in this report any change in the registrant's internal control over financial reporting that occurred during the registrant's most recent fiscal quarter that has materially affected, or is reasonably likely to materially affect, the registrant's internal control over financial reporting; and
5. The registrant's other certifying officer and I have disclosed, based on our most recent evaluation of internal control over financial reporting, to the registrant's auditors and the audit committee of the registrant's board of directors:
 - (a) All significant deficiencies and material weaknesses in the design or operation of internal control over financial reporting which are reasonably likely to adversely affect the registrant's ability to record, process, summarize and report financial information; and
 - (b) Any fraud, whether or not material, that involves management or other employees who have a significant role in the registrant's internal control over financial reporting.

Date: March 12, 2010

By: /s/ WILLIAM H. MCMUNN
William H. McMunn
President and Chief Executive Officer

CERTIFICATIONS

I, Bruce W. Teeters, certify that:

1. I have reviewed this annual report on Form 10-K of Consolidated-Tomoka Land Co.;
2. Based on my knowledge, this report does not contain any untrue statement of a material fact or omit to state a material fact necessary to make the statements made, in light of the circumstances under which such statements were made, not misleading with respect to the period covered by this report;
3. Based on my knowledge, the financial statements, and other financial information included in this report, fairly present in all material respects the financial condition, results of operations and cash flows of the registrant as of, and for, the periods presented in this report;
4. The registrant's other certifying officer and I are responsible for establishing and maintaining disclosure controls and procedures (as defined in Exchange Act Rules 13a-15(e) and 15d-15(e)) and internal control over financial reporting (as defined in Exchange Act Rules 13a-15(f) and 15d-15(f)) for the registrant and have:
 - (a) Designed such disclosure controls and procedures, or caused such disclosure controls and procedures to be designed under our supervision, to ensure that material information relating to the registrant, including its consolidated subsidiaries, is made known to us by others within those entities, particularly during the period in which this report is being prepared;
 - (b) Designed such internal control over financial reporting, or caused such internal control over financial reporting to be designed under our supervision, to provide reasonable assurance regarding the reliability of financial reporting and the preparation of financial statements for external purposes in accordance with generally accepted accounting principles;
 - (c) Evaluated the effectiveness of the registrant's disclosure controls and procedures and presented in this report our conclusions about the effectiveness of the disclosure controls and procedures, as of the end of the period covered by this report based on such evaluation; and
 - (d) Disclosed in this report any change in the registrant's internal control over financial reporting that occurred during the registrant's most recent fiscal quarter that has materially affected, or is reasonably likely to materially affect, the registrant's internal control over financial reporting; and
5. The registrant's other certifying officer and I have disclosed, based on our most recent evaluation of internal control over financial reporting, to the registrant's auditors and the audit committee of the registrant's board of directors:
 - (a) All significant deficiencies and material weaknesses in the design or operation of internal control over financial reporting which are reasonably likely to adversely affect the registrant's ability to record, process, summarize and report financial information; and
 - (b) Any fraud, whether or not material, that involves management or other employees who have a significant role in the registrant's internal control over financial reporting.

Date: March 12, 2010

By: _____ /s/ BRUCE W. TEETERS

Bruce W. Teeters
Senior Vice President-Finance
and Treasurer

**CERTIFICATION PURSUANT TO
18 U.S.C. SECTION 1350,
AS ADOPTED PURSUANT TO
SECTION 906 OF THE SARBANES-OXLEY ACT OF 2002**

In connection with the Annual Report of Consolidated-Tomoka Land Co. (the "Company") on Form 10-K for the period ending December 31, 2009, as filed with the Securities and Exchange Commission on the date hereof (the "Report"), I, William H. McMunn, President and Chief Executive Officer of the Company, certify, pursuant to 18 U.S.C. Section 1350, as adopted pursuant to Section 906 of the Sarbanes-Oxley Act of 2002, that:

- (1) The Report fully complies with the requirements of Section 13(a) or 15(d) of the Securities Exchange Act of 1934; and
- (2) The information contained in the Report fairly presents, in all material respects, the financial condition and results of operations of the Company.

March 12, 2010

/s/ WILLIAM H. MCMUNN

William H. McMunn
President and Chief Executive Officer

**CERTIFICATION PURSUANT TO
18 U.S.C. SECTION 1350,
AS ADOPTED PURSUANT TO
SECTION 906 OF THE SARBANES-OXLEY ACT OF 2002**

In connection with the Annual Report of Consolidated-Tomoka Land Co. (the "Company") on Form 10-K for the period ending December 31, 2009, as filed with the Securities and Exchange Commission on the date hereof (the "Report"), I, Bruce W. Teeters, Senior Vice President—Finance and Treasurer of the Company, certify, pursuant to 18 U.S.C. Section 1350, as adopted pursuant to Section 906 of the Sarbanes-Oxley Act of 2002, that:

- (1) The Report fully complies with the requirements of Section 13(a) or 15(d) of the Securities Exchange Act of 1934; and
- (2) The information contained in the Report fairly presents, in all material respects, the financial condition and results of operations of the Company.

March 12, 2010

/s/ BRUCE W. TEETERS

Bruce W. Teeters
Senior Vice President-Finance and Treasurer

[THIS PAGE INTENTIONALLY LEFT BLANK]

**CONSOLIDATED-TOMOKA LAND CO.
INDEX TO FINANCIAL STATEMENTS**

| | |
|-------------------------------------------------------------------------------------------------------------------------------|-----|
| Reports of Independent Registered Public Accounting Firm | F-2 |
| Consolidated Balance Sheets as of December 31, 2009 and 2008 | F-4 |
| Consolidated Statements of Income for the three years ended December 31, 2009 | F-5 |
| Consolidated Statements of Shareholders' Equity and Comprehensive Income for the three years ended December 31, 2009 | F-6 |
| Consolidated Statements of Cash Flows for the three years ended December 31, 2009 | F-7 |
| Notes to Consolidated Financial Statements | F-9 |

Report of Independent Registered Public Accounting Firm

The Board of Directors and Stockholders Consolidated-Tomoka Land Co.:

We have audited the accompanying consolidated balance sheets of Consolidated-Tomoka Land Co. and subsidiaries as of December 31, 2009 and 2008, and the related consolidated statements of income, stockholders' equity and comprehensive income, and cash flows for each of the years in the three-year period ended December 31, 2009. In connection with our audits of the consolidated financial statements, we also have audited financial statement schedule III—*Real Estate and Accumulated Depreciation*. These consolidated financial statements and financial statement schedule are the responsibility of the Company's management. Our responsibility is to express an opinion on these consolidated financial statements and financial statement schedule based on our audits.

We conducted our audits in accordance with the standards of the Public Company Accounting Oversight Board (United States). Those standards require that we plan and perform the audit to obtain reasonable assurance about whether the financial statements are free of material misstatement. An audit includes examining, on a test basis, evidence supporting the amounts and disclosures in the financial statements. An audit also includes assessing the accounting principles used and significant estimates made by management, as well as evaluating the overall financial statement presentation. We believe that our audits provide a reasonable basis for our opinion.

In our opinion, the consolidated financial statements referred to above present fairly, in all material respects, the financial position of Consolidated-Tomoka Land Co. and subsidiaries as of December 31, 2009 and 2008, and the results of their operations and their cash flows for each of the years in the three-year period ended December 31, 2009, in conformity with U.S. generally accepted accounting principles. Also in our opinion, the related financial statement schedule, when considered in relation to the basic consolidated financial statements taken as a whole, presents fairly, in all material respects, the information set forth therein.

We also have audited, in accordance with the standards of the Public Company Accounting Oversight Board (United States), Consolidated-Tomoka Land Co.'s internal control over financial reporting as of December 31, 2009, based on criteria established in *Internal Control—Integrated Framework* issued by the Committee of Sponsoring Organizations of the Treadway Commission (COSO), and our report dated March 12, 2010, expressed an unqualified opinion on the effectiveness of the Company's internal control over financial reporting.

/s/ KPMG LLP
Jacksonville, Florida
March 12, 2010
Certified Public Accountants

Report of Independent Registered Public Accounting Firm

The Board of Directors and Stockholders Consolidated-Tomoka Land Co.:

We have audited Consolidated-Tomoka Land Co.'s internal control over financial reporting as of December 31, 2009, based on criteria established in *Internal Control—Integrated Framework* issued by the Committee of Sponsoring Organizations of the Treadway Commission (COSO). Consolidated-Tomoka Land Co.'s management is responsible for maintaining effective internal control over financial reporting and for its assessment of the effectiveness of internal control over financial reporting, included in the accompanying Management's Report on Internal Control over Financial Reporting appearing under Item 9A. Our responsibility is to express an opinion on the Company's internal control over financial reporting based on our audit.

We conducted our audit in accordance with the standards of the Public Company Accounting Oversight Board (United States). Those standards require that we plan and perform the audit to obtain reasonable assurance about whether effective internal control over financial reporting was maintained in all material respects. Our audit included obtaining an understanding of internal control over financial reporting, assessing the risk that a material weakness exists, and testing and evaluating the design and operating effectiveness of internal control based on the assessed risk. Our audit also included performing such other procedures as we considered necessary in the circumstances. We believe that our audit provides a reasonable basis for our opinion.

A company's internal control over financial reporting is a process designed to provide reasonable assurance regarding the reliability of financial reporting and the preparation of financial statements for external purposes in accordance with generally accepted accounting principles. A company's internal control over financial reporting includes those policies and procedures that (1) pertain to the maintenance of records that, in reasonable detail, accurately and fairly reflect the transactions and dispositions of the assets of the company; (2) provide reasonable assurance that transactions are recorded as necessary to permit preparation of financial statements in accordance with generally accepted accounting principles, and that receipts and expenditures of the company are being made only in accordance with authorizations of management and directors of the company; and (3) provide reasonable assurance regarding prevention or timely detection of unauthorized acquisition, use, or disposition of the company's assets that could have a material effect on the financial statements.

Because of its inherent limitations, internal control over financial reporting may not prevent or detect misstatements. Also, projections of any evaluation of effectiveness to future periods are subject to the risk that controls may become inadequate because of changes in conditions, or that the degree of compliance with the policies or procedures may deteriorate.

In our opinion, Consolidated-Tomoka Land Co. maintained, in all material respects, effective internal control over financial reporting as of December 31, 2009, based on criteria established in *Internal Control—Integrated Framework* issued by the Committee of Sponsoring Organizations of the Treadway Commission.

We also have audited, in accordance with the standards of the Public Company Accounting Oversight Board (United States), the consolidated balance sheets of Consolidated-Tomoka Land Co. and subsidiaries as of December 31, 2009 and 2008, and the related consolidated statements of income, stockholders' equity and comprehensive income, and cash flows for each of the years in the three-year period ended December 31, 2009, and financial statement schedule III—*Real Estate and Accumulated Depreciation*, and our report dated March 12, 2010, expressed an unqualified opinion on those consolidated financial statements.

/s/ KPMG LLP
Jacksonville, Florida
March 12, 2010
Certified Public Accountants

CONSOLIDATED BALANCE SHEETS

| | December 31, | |
|----------------------------------------------------------------------------------------------------------------------------------------------------------------------------|---------------|---------------|
| | 2009 | 2008 |
| Assets | | |
| Cash | \$ 266,669 | \$ 388,787 |
| Restricted Cash (Note 1) | — | 462,765 |
| Investment Securities (Note 2) | 4,966,864 | 5,260,868 |
| Notes Receivable (Note 4) | — | 4,153,693 |
| Land and Development Costs (Note 5) | 26,700,494 | 18,973,138 |
| Intangible Assets (Note 1) | 4,588,649 | 5,009,819 |
| Other Assets | 6,067,023 | 6,048,126 |
| | 42,589,699 | 40,297,196 |
| Property, Plant, and Equipment | | |
| Land, Agriculture and Subsurface Interests | 13,960,019 | 12,643,391 |
| Golf Buildings, Improvements, and Equipment | 11,798,679 | 11,750,711 |
| Income Properties: Land, Buildings, and Improvements | 119,800,091 | 116,517,534 |
| Other Furnishings and Equipment | 3,262,345 | 3,207,845 |
| Construction in Process | — | 1,217,549 |
| Total Property, Plant, and Equipment | 148,821,134 | 145,337,030 |
| Less Accumulated Depreciation and Amortization | (14,835,701) | (12,488,163) |
| Net Property, Plant, and Equipment | 133,985,433 | 132,848,867 |
| Total Assets | \$176,575,132 | \$173,146,063 |
| Liabilities | | |
| Accounts Payable | \$ 864,186 | \$ 706,095 |
| Accrued Liabilities | 7,385,250 | 7,204,749 |
| Accrued Stock Based Compensation (Note 9) | 1,428,641 | 1,190,725 |
| Pension Liability (Note 7) | 1,377,719 | 3,127,230 |
| Income Taxes Payable (Note 3) | — | 1,236,206 |
| Deferred Income Taxes (Note 3) | 34,275,368 | 33,316,436 |
| Notes Payable (Note 6) | 13,210,389 | 8,550,315 |
| Total Liabilities | 58,541,553 | 55,331,756 |
| Shareholders' Equity | | |
| Preferred Stock—50,000 Shares Authorized, \$100 Par Value; None Issued | — | — |
| Common Stock—25,000,000 Shares Authorized; \$1 Par Value; 5,723,268 and 5,727,515 Shares Issued and Outstanding at December 31, 2009 and 2008, respectively | 5,723,268 | 5,727,515 |
| Additional Paid-In Capital | 5,131,246 | 5,217,955 |
| Retained Earnings | 108,639,227 | 109,556,103 |
| Accumulated Other Comprehensive Loss | (1,460,162) | (2,687,266) |
| Total Shareholders' Equity | 118,033,579 | 117,814,307 |
| Total Liabilities and Shareholders' Equity | \$176,575,132 | \$173,146,063 |

The accompanying notes are an integral part of these financial statements.

CONSOLIDATED STATEMENTS OF INCOME

| | Calendar Year | | |
|------------------------------------------------------|----------------------|----------------------|----------------------|
| | December 31, 2009 | December 31, 2008 | December 31, 2007 |
| Income: | | | |
| Real Estate Operations: | | | |
| Real Estate Sales | | | |
| Sales and Other Income | \$ 2,633,947 | \$ 4,565,599 | \$25,947,800 |
| Costs and Other Expenses | (1,255,353) | (1,593,569) | (6,934,712) |
| | 1,378,594 | 2,972,030 | 19,013,088 |
| Income Properties | | | |
| Leasing Revenues and Other Income | 9,570,129 | 9,235,775 | 8,725,096 |
| Costs and Other Expenses | (2,270,927) | (1,898,281) | (1,768,751) |
| | 7,299,202 | 7,337,494 | 6,956,345 |
| Golf Operations | | | |
| Sales and Other Income | 4,723,825 | 4,671,618 | 5,160,070 |
| Costs and Other Expenses | (6,643,825) | (6,514,712) | (6,909,261) |
| | (1,920,000) | (1,843,094) | (1,749,191) |
| Total Real Estate Operations | 6,757,796 | 8,466,430 | 24,220,242 |
| Profit on Sales of Other Real Estate Interests | 35,839 | 1,369,696 | 2,579,827 |
| Interest and Other Income | 195,609 | 712,496 | 663,231 |
| Operating Income | 6,989,244 | 10,548,622 | 27,463,300 |
| General and Administrative Expenses | (5,744,659) | (2,812,803) | (6,170,242) |
| Income Before Income Taxes | 1,244,585 | 7,735,819 | 21,293,058 |
| Income Taxes (Note 3) | (444,015) | (2,900,919) | (7,760,220) |
| Net Income | \$ 800,570 | \$ 4,834,900 | \$13,532,838 |
| Per Share Information (Note 10): | | | |
| Basic Net Income Per Share | \$ 0.14 | \$ 0.84 | \$ 2.37 |
| Diluted Net Income Per Share | \$ 0.14 | \$ 0.84 | \$ 2.36 |

The accompanying notes are an integral part of these financial statements.

**CONSOLIDATED STATEMENTS OF SHAREHOLDERS' EQUITY
AND COMPREHENSIVE INCOME**

| | Common Stock | Additional Paid-in Capital | Retained Earnings | Accumulated Other Comprehensive Loss | Total Shareholders' Equity | Comprehensive Income (Loss) |
|--------------------------------------------------------------|--------------------|----------------------------------|----------------------|-----------------------------------------------|----------------------------------|--------------------------------|
| Balance December 31, 2006 | \$5,693,007 | \$2,630,748 | \$ 95,650,170 | \$ (976,618) | \$102,997,307 | |
| Net Income | — | — | 13,532,838 | — | 13,532,838 | \$13,532,838 |
| Other Comprehensive Income (Loss): | | | | | | |
| Cash Flow Hedging Derivative (Net of Tax of \$76,061) | | | | (121,117) | (121,117) | (121,117) |
| Pension: | | | | | | |
| Transition Obligation (Net of Tax of \$2,888) | — | — | — | (4,599) | (4,599) | (4,599) |
| Prior Service Cost (Net of Tax \$8,185) | — | — | — | 13,033 | 13,033 | 13,033 |
| Actuarial Net Loss (Net of Tax \$68,144) | — | — | — | (108,509) | (108,509) | (108,509) |
| Comprehensive Income | | | | | | <u>\$13,311,646</u> |
| Exercise of Liability Classified Stock Options | 32,799 | 2,499,826 | — | — | 2,532,625 | |
| Cash Dividends (\$.38 per share) | — | — | (2,170,970) | — | (2,170,970) | |
| Balance December 31, 2007 | \$5,725,806 | \$5,130,574 | \$107,012,038 | \$(1,197,810) | \$116,670,608 | |
| Net Income | — | — | 4,834,900 | — | 4,834,900 | \$ 4,834,900 |
| Other Comprehensive Income (Loss): | | | | | | |
| Cash Flow Hedging Derivative (Net of Tax of \$155,256) | — | — | — | (247,223) | (247,223) | (247,223) |
| Pension: | | | | | | |
| Transition Obligation (Net of Tax of \$2,888) | — | — | — | (4,599) | (4,599) | (4,599) |
| Prior Service Cost (Net of Tax of \$8,185) | — | — | — | 13,033 | 13,033 | 13,033 |
| Actuarial Net Loss (Net of Tax of \$785,419) | — | — | — | (1,250,667) | (1,250,667) | (1,250,667) |
| Comprehensive Income | | | | | | <u>\$ 3,345,444</u> |
| Exercise of Liability Classified Stock Options | 1,709 | 87,381 | — | — | 89,090 | |
| Cash Dividends (\$.40 per share) | — | — | (2,290,835) | — | (2,290,835) | |
| Balance, December 31, 2008 | \$5,727,515 | \$5,217,955 | \$109,556,103 | \$(2,687,266) | \$117,814,307 | |
| Net Income | — | — | 800,570 | — | 800,570 | \$ 800,570 |
| Other Comprehensive Income (Loss): | | | | | | |
| Cash Flow Hedging Derivative (Net of Tax of \$101,164) | — | — | — | 161,088 | 161,088 | 161,088 |
| Pension: | | | | | | |
| Transition Obligation (Net of Tax of \$2,888) | — | — | — | (4,599) | (4,599) | (4,599) |
| Prior Service Cost (Net of Tax of \$8,185) | — | — | — | 13,033 | 13,033 | 13,033 |
| Actuarial Net Gain (Net of Tax of \$664,163) | — | — | — | 1,057,582 | 1,057,582 | 1,057,582 |
| Comprehensive Income | | | | | | <u>\$ 2,027,674</u> |
| Exercise of Liability Classified Stock Options | 413 | 13,278 | — | — | 13,691 | |
| Stock Buyback | (4,660) | (99,987) | — | — | (104,647) | |
| Cash Dividends (\$.30 per share) | — | — | (1,717,446) | — | (1,717,446) | |
| Balance December 31, 2009 | <u>\$5,723,268</u> | <u>\$5,131,246</u> | <u>\$108,639,227</u> | <u>\$(1,460,162)</u> | <u>\$118,033,579</u> | |

The accompanying notes are in integral part of these consolidated statements.

CONSOLIDATED STATEMENTS OF CASH FLOWS

| | Calendar Year | | |
|-----------------------------------------------------------------------------------|----------------------|----------------------|----------------------|
| | December 31, 2009 | December 31, 2008 | December 31, 2007 |
| Cash Flow from Operating Activities: | | | |
| Net Income | \$ 800,570 | \$ 4,834,900 | \$ 13,532,838 |
| Adjustments to Reconcile Net Income to Net Cash Provided by Operating Activities: | | | |
| Depreciation and Amortization | 2,771,633 | 2,655,088 | 2,466,981 |
| Loss on Sale of Property, Plant, and Equipment | — | 13,357 | 219,690 |
| Deferred Income Taxes | 958,932 | 434,037 | 3,390,812 |
| Stock Based Compensation | 253,424 | (1,966,781) | 1,341,661 |
| Decrease (Increase) in Assets: | | | |
| Notes Receivable | 150,000 | 1,010,728 | (4,464,421) |
| Land and Development Costs | (3,723,663) | (3,318,682) | (596,116) |
| Other Assets | (18,897) | 1,851,684 | (2,330,205) |
| Increase (Decrease) in Liabilities: | | | |
| Accounts Payable | 158,091 | 254,005 | 284,712 |
| Accrued Liabilities, Accrued Stock Based Compensation and Pension Liability | (341,904) | 158,348 | 713,861 |
| Deferred Profit | — | — | (563,467) |
| Income Taxes Payable | (1,236,206) | (1,821,843) | 3,058,049 |
| Net Cash (Used In) Provided by Operating Activities | <u>(228,020)</u> | <u>4,104,841</u> | <u>17,054,395</u> |
| Cash Flow from Investing Activities: | | | |
| Acquisition of Property, Plant, and Equipment | (3,487,029) | (18,153,273) | (5,614,256) |
| Acquisition of Intangible Assets | — | (704,485) | — |
| Decrease (Increase) in Restricted Cash for Acquisitions | | | |
| Through the Like-Kind Exchange Process | 462,765 | 9,924,785 | (9,201,588) |
| Proceeds from Calls or Maturities of Investment Securities | | | |
| Securities | 7,596,993 | 15,725,687 | 26,087,013 |
| Acquisition of Investment Securities | (7,302,989) | (10,793,461) | (24,499,902) |
| Net Cash Used In Investing Activities | <u>(2,730,260)</u> | <u>(4,000,747)</u> | <u>(13,228,733)</u> |
| Cash Flow from Financing Activities: | | | |
| Proceeds from Notes Payable | 16,463,000 | 12,745,000 | 4,965,000 |
| Payments on Notes Payable | (11,802,926) | (11,002,073) | (5,219,143) |
| Cash Proceeds from Exercise of Stock Options | 2,059 | 5,090 | 16,762 |
| Cash Used to Settle Stock Appreciation Rights | (3,878) | (36,315) | (1,291,749) |
| Cash Used for Repurchase of Common Stock | (104,647) | — | — |
| Dividends Paid | (1,717,446) | (2,290,835) | (2,170,970) |
| Net Cash Provided By (Used In) Financing Activities | <u>2,836,162</u> | <u>(579,133)</u> | <u>(3,700,100)</u> |
| Net (Decrease) Increase in Cash | (122,118) | (475,039) | 125,562 |
| Cash, Beginning of Year | 388,787 | 863,826 | 738,264 |
| Cash, End of Year | <u>\$ 266,669</u> | <u>\$ 388,787</u> | <u>\$ 863,826</u> |

CONSOLIDATED STATEMENTS OF CASH FLOWS (Continued)

Supplemental Disclosure of Cash Flows:

In connection with the sale of real estate and income properties, and the release of subsurface entry rights, the Company received, as consideration, notes receivable of \$4,464,421 in 2007. There were no notes receivable taken as consideration in 2008 or 2009.

The Company completed foreclosure on two notes receivable during 2009 totaling \$4,153,693, plus accrued interest totaling \$211,799, with the notes receivable and accrued interest written off and the land reacquired. There was no gain or loss recognized on the transactions.

Total interest paid was \$546,383, \$537,077, and \$514,021 for the years 2009, 2008, and 2007, respectively. Interest paid included interest of \$137,644, \$185,503, and \$119,418, capitalized to land development and construction in process in 2009, 2008, and 2007, respectively.

Income taxes of \$1,924,972, \$3,353,343, and \$1,134,784, were paid in 2009, 2008, and 2007, respectively.

A charitable contribution of 26 acres of land, with a fair market value of \$1,500,000, was made during 2007. This contribution was recorded as real estate sales at fair market value with an offset to real estate costs and expenses, resulting in no gain or loss on the charitable contribution.

The accompanying notes are an integral part of these consolidated statements.

NOTES TO CONSOLIDATED FINANCIAL STATEMENTS

December 31, 2009, 2008, and 2007

NOTE 1 SUMMARY OF SIGNIFICANT ACCOUNTING POLICIES

PRINCIPLES OF CONSOLIDATION

The consolidated financial statements include the accounts of Consolidated-Tomoka Land Co., a Florida corporation, and its wholly owned subsidiaries: Indigo Group Inc., Indigo Group Ltd., Indigo International LLC, Indigo Development LLC, Indigo Commercial Realty Inc., W. Hay Inc., W. Hay LLC, and Palms Del Mar Inc. (collectively, "the Company"). All significant intercompany accounts and transactions have been eliminated in consolidation.

NATURE OF OPERATIONS

The Company is primarily engaged, through its wholly owned subsidiaries, in the real estate industry. Real estate operations, which are primarily commercial in nature, also include golf operations, income properties, leasing properties for oil and mineral exploration, and agricultural operations. These operations are predominantly located in Volusia County, Florida, with various income properties owned within Florida, Georgia, and North Carolina.

USE OF ESTIMATES IN THE PREPARATION OF FINANCIAL STATEMENTS

The preparation of financial statements in conformity with U.S. generally accepted accounting principles requires management to make estimates and assumptions that affect the reported amounts of assets and liabilities, and disclosure of contingent assets and liabilities at the date of the financial statements, and the reported amounts of revenues and expenses during the reporting period. Actual results could differ from those estimates.

Because of the adverse market conditions that currently exist in the Florida and national real estate markets, and financial and credit markets, it is possible that the estimates and assumptions, most notably with the Company's investment in investment securities, income properties, and its pension liability, could change materially during the time span associated with the continued weakened state of these real estate markets and financial markets.

CASH AND CASH EQUIVALENTS

Cash and Cash equivalents include cash on hand, bank demand accounts and money market accounts having original maturities at acquisition date of 90 days or less.

RESTRICTED CASH

The Company's qualified intermediary held \$462,765 in escrow, for the benefit of the Company at December 31, 2008, with no funds being held at December 31, 2009. The funds were being held to complete the purchase of income properties through the like-kind exchange process. The funds were returned to the Company in 2009, as the purchase of the property was not completed. Income taxes of approximately \$178,500 were paid on the transaction.

ACCOUNTS AND NOTES RECEIVABLE

Accounts and notes receivable primarily consist of mortgage notes receivables from land sales and rent receivables from income properties. The impairment of these receivables is determined based on a review of specifically identified accounts using judgments which are made with respect to the collectability of the receivable based on historical experience and current economic trends. In determining impairment on notes receivable, the Company also evaluates the property which supports the mortgage note. The accrual of interest on the notes receivable is stopped at the time it is determined collection of the receivable is unlikely. Actual losses could differ from those estimates.

NOTE 1 SUMMARY OF SIGNIFICANT ACCOUNTING POLICIES (Continued)

LAND AND DEVELOPMENT COSTS

The carrying value of land and development includes the initial acquisition costs of land, improvements thereto, and other costs incidental to the acquisition or development of land.

These costs are allocated to properties on a relative sales value basis and are charged to costs of sales as specific properties are sold. Due to the nature of the business, land and development costs have been classified as an operating activity on the consolidated statements of cash flows.

Interest of \$96,762, \$96,638, and \$102,840 was capitalized to land and development during 2009, 2008, and 2007, respectively.

INTANGIBLE ASSETS

Intangible assets consist of the in-place lease value associated with single-tenant income properties acquired by the Company. This in-place lease value was determined by estimating the cost of replacing the lease should it not be in-place. Factors, such as foregone rent and leasing commissions among others, are taken into account to determine the in-place lease value. This value is amortized over the remaining term of the lease at the time the properties are purchased. At December 31, 2009, the in-place lease value totaled \$4,588,649, net of amortization of \$2,007,891. At December 31, 2008, the in-place lease value totaled \$5,009,819, net of amortization of \$1,586,721 for 2008.

The estimated amortization expense for each of the calendar years 2010-2013 is \$421,170. The weighted average amortization period of the in place lease value is 17 years.

PROPERTY, PLANT, AND EQUIPMENT

Property, plant, and equipment are stated at cost, less accumulated depreciation and amortization. Such properties are depreciated on a straight-line basis over their estimated useful lives. Renewals and betterments are capitalized to property accounts. The cost of maintenance and repairs is expensed as incurred. The cost of property retired or otherwise disposed of, and the related accumulated depreciation or amortization, are removed from the accounts, and any resulting gain or loss is taken into income. Subsurface interests are included in property, plant, and equipment with no net cost basis at December 31, 2009. The amount of depreciation and amortization of property, plant, and equipment, exclusive of amortization related to intangible assets, recognized for the years 2009, 2008, and 2007, was \$2,350,464, \$2,242,724, and, \$2,081,030, respectively. Interest of \$40,882, \$88,865, and \$16,578 was capitalized to construction in process during 2009, 2008, and 2007, respectively.

The range of estimated useful lives for property, plant, and equipment is as follows:

| | |
|----------------------------------------------------|-------------|
| Golf Buildings and Improvements | 10-43 Years |
| Golf Equipment | 5-10 Years |
| Income Properties Buildings and Improvements | 40 Years |
| Other Furnishings and Equipment | 5-25 Years |
| Agriculture Equipment | 5-10 Years |

LONG-LIVED ASSETS

The Company reviews the recoverability of long-lived assets, including real estate held for development and sale, and property, plant, and equipment, for impairment whenever events or changes in circumstances indicate that the carrying amount of an asset may not be recoverable. Long-lived assets are evaluated for impairment by

NOTE 1 SUMMARY OF SIGNIFICANT ACCOUNTING POLICIES (Continued)

using an undiscounted cash flow approach which considers future estimated capital expenditures. Impairment on long-lived assets is measured at fair value by estimating discounted future operating cash flow and sales price, less cost to sell. There has been no impairment of long-lived assets reflected in the consolidated financial statements for the three years ended December 31, 2009.

SALE OF REAL ESTATE

The profit on sales of real estate is accounted for as required by the Accounting for Sales of Real Estate Topic of Financial Accounting Standards Board Accounting Standards Codification ("FASB ASC"). The Company recognizes revenue from the sale of real estate at the time the sale is consummated, unless the property is sold on a deferred payment plan and the initial payment does not meet established criteria, or the Company retains some form of continuing involvement in the property.

No revenues or profits were deferred for the years ended December 31, 2009, 2008, and 2007.

INCOME PROPERTIES

The rental of the Company's income properties are classified as operating leases. The Company recognizes lease income on these properties on a straight-line basis over the term of the lease.

OPERATING LEASE EXPENSE

The Company leases property and equipment under leases, which are classified as operating leases. The Company recognizes lease expense on a straight-line basis over the term of the lease.

GOLF OPERATIONS

The Company operates two golf courses and a clubhouse facility, including food and beverage operations. Revenues from this operation, including greens fees, cart rentals, merchandise, and food and beverage sales, are recognized at the time of sale. Initiation fees and membership dues are recognized over the life of the membership.

OTHER REAL ESTATE INTERESTS

The Company owns full or fractional subsurface oil, gas, and mineral interest in approximately 516,000 "surface" acres of land owned by others in various parts of Florida, equivalent to approximately 283,000 acres in terms of full interest. The Company leases its interest to mineral exploration firms for exploration. Leases on 800 acres have reached maturity; but, in accordance with their terms, are held by oil companies without annual rental payments because of producing oil wells, from which the Company receives royalties. Revenues are recognized at the time the Company receives the royalty payment.

From time to time the Company will release surface or subsurface entry rights upon request of the surface owner. The Company recognizes revenue from the release at the time the transaction is consummated, unless the property is released under a deferred payment plan and the initial payment does not meet the criteria establish under The Sales of Real Estate Topic of FASB ASC, the Company retains some form of continuing involvement in the property, or the transaction does not meet other requirements.

UNFUNDED DEFERRED COMPENSATION PLANS

The Company maintains two unfunded deferred compensation plans. One plan is established for the Board of Directors of the Company, with the second plan established for the officers and key employees of the Company. Under the plans, any member of the Board of Directors, officer, or key employee may elect to defer all or a portion of their compensation.

NOTE 1 SUMMARY OF SIGNIFICANT ACCOUNTING POLICIES (Continued)

The amount of deferred compensation shall increase annually by an amount which is equal to interest on the deferred compensation at the rate of return earned by the Company on its investment securities. Compensation credited to a participant shall be deferred until such participant ceases to be a member of the Board of Directors, officer, or key employee, at which time the amounts accumulated shall be distributed in the manner elected. The plans are non-qualified plans as defined by the Internal Revenue Service. The amount of deferred compensation reflected in accrued liabilities on the consolidated balance sheets at December 31, 2009 and 2008 was \$2,155,935 and \$2,080,311, respectively. Deferred compensation expense for the three years ended December 31, 2009, was \$147,026, \$152,102, and \$127,697, respectively.

PENSION

The Company has a funded, non-contributory defined benefit pension plan covering all eligible employees. The Company's method of funding and accounting for pension costs is to fund and accrue all normal costs plus an amount necessary to amortize past service cost over a period of 30 years. (See Note 7 "Pension Plan").

STOCK OPTIONS

The Company maintains a stock option plan ("the Plan") pursuant to which 500,000 shares of the Company's common stock may be issued. The Plan in place was approved at the April 25, 2001 shareholders' meeting. Under the Plan, the option exercise price equals the stock market price on the date of grant. The options generally vest over five years and all expire after ten years. In connection with the grant of non-qualified options, a stock appreciation right for each share covered by the option may also be granted. The stock appreciation right will entitle the optionee to receive a supplemental payment, which may be paid in whole or in part in cash or in shares of common stock equal to a portion of the spread between the exercise price and the fair market value of the underlying share at the time of exercise. The expenses associated with stock options and stock appreciation rights are recognized on a straight-line basis over their requisite service period.

Both the Company's stock options and stock appreciation rights are liability classified awards and are required to be remeasured to fair value at each balance sheet date until the award is settled, as required by provisions of the Share-Based Payments Topic of FASB ASC. (See Note 9 "Stock Option Plan").

INCOME TAXES

The Company uses the asset and liability method to account for income taxes. Deferred income taxes result primarily from the net tax effect of temporary differences between the carrying amounts of assets and liabilities for financial reporting purposes and the amounts used for income tax purposes (See Note 3 "Income Taxes").

EARNINGS PER COMMON SHARE

Basic and diluted earnings per common share are presented in accordance with The Earnings Per Share Topic of FASB ASC. Basic earnings per common share is computed by dividing net income by the weighted average number of shares outstanding. Diluted earnings per common share are based on the assumption of the conversion of stock options using the treasury stock method at average cost for the year (see Note 10 "Earnings Per Share").

CONCENTRATION OF CREDIT RISK

Financial instruments, which potentially subject the Company to concentrations of credit risk, consist principally of cash, investment securities, accounts receivables, and notes receivable.

NOTE 1 SUMMARY OF SIGNIFICANT ACCOUNTING POLICIES (Continued)

The Company's real estate investments are concentrated in the State of Florida. Uncertainty of the duration of a prolonged real estate and economic downturn could have an adverse impact on the Company's real estate values.

The largest of the Company's income property tenants consist of CVS Corporation and Walgreen Co., which the Company considers good credit quality tenants. CVS Corporation revenues accounted for 15% of consolidated revenue during 2009, with Walgreen Co. accounting for 13% of consolidated revenue. CVS Corporation and Walgreen Co. accounted for 20% and 17% of the Company's income portfolio in terms of rentable square feet in 2009, respectively. The Company has diversified its income property tenant mix with Barnes & Noble, Lowe's Home Improvement Center, Northern Tool & Equipment Co., RBC Centura Bank, Dick's Sporting Goods, Harris Teeter Supermarket, and Best Buy, as tenants.

FAIR VALUE OF FINANCIAL INSTRUMENTS

The largest carrying amounts of the Company's financial assets and liabilities, including cash, accounts receivable, and accounts payable at December 31, 2009 and 2008, approximate fair value because of the short maturity of these instruments. The carrying amount of the Company's notes receivable and notes payable approximates fair value at December 31, 2009 and 2008, since the notes are at floating rates or fixed rates, which approximate current market rates for notes with similar risks and maturities. The interest rate swap derivative is carried at its fair value at December 31, 2009 and 2008.

At the time the Company's debt was refinanced in 2002, the Company entered into an interest rate swap agreement. This swap arrangement changes the variable rate cash flow exposure on the debt obligations to fixed cash flows so that we can manage fluctuations in cash flows resulting from interest rate risk. This swap arrangement essentially creates the equivalent of fixed-rate debt. The above referenced transaction is accounted for under the Derivative Instruments and Hedging Activities Topic of FASB ASC, which requires the derivative to be recognized on the balance sheet at its fair value and the changes in fair value to be accounted for as other comprehensive income or loss. The fair market value of the interest rate swap agreement was determined using Significant Other Observable Inputs (Level 2). A financial model is used to determine the fair market value of the interest rate swap. The model estimates the expected cash flows discounted at the risk-free rate, using the treasury yield curve, plus the current market observable LIBOR interest rate spread to treasuries, adjusted for the credit risk of the Company. The Fair Market Value recorded on the Balance Sheet at December 31, 2009, was a liability of \$685,513. The change in fair value, net of applicable taxes, in the cumulative amount of \$421,076 at December 31, 2009, has been recorded as accumulated other comprehensive loss, a component of shareholders' equity.

DERIVATIVE INSTRUMENTS AND CERTAIN HEDGING ACTIVITY

The Company accounts for derivatives and hedging activity under, the Accounting for Derivative Instruments and Certain Hedging Activities Topic of FASB ASC.

All derivatives are recognized on the balance sheet at their fair value. On the date the derivative contract is entered into, the Company designates the derivative as a hedge of the variability of cash flows to be paid related to a recognized liability ("cash flow hedge"). The Company formally documents all relationships between hedging instruments and hedged items, as well as its risk-management objective and strategy for undertaking various hedge transactions. This process includes linking all derivatives that are designated as cash-flow hedges to specific liabilities on the balance sheet. The Company also formally assesses, both at the hedge's inception and on an ongoing basis, whether the derivatives that are used in hedging transactions are highly effective in offsetting changes in cash flows of hedged items. When it is determined that a derivative is not highly effective as a hedge or that it has ceased to be a highly effective hedge, the Company discontinues hedge accounting prospectively.

NOTE 1 SUMMARY OF SIGNIFICANT ACCOUNTING POLICIES (Continued)

Changes in the fair value of a derivative that is highly effective and that is designated and qualifies as a cash-flow hedge are recorded in other comprehensive loss, until earnings are affected by the variability in cash flows of the designated hedged item.

The Company discontinues hedge accounting prospectively when it is determined that the derivative is no longer effective in offsetting changes in the cash flows of the hedged item, the derivative expires or is sold, terminated, or exercised, the derivative is re-designated as a non-hedging instrument or management determines that designation of the derivative as a hedging instrument is no longer appropriate. When hedge accounting is discontinued, the Company continues to carry the derivative at its fair value on the balance sheet, and recognizes any changes in its fair value in earnings.

ACCOUNTING PRONOUNCEMENTS

In June 2008, guidance was issued related to determining whether instruments granted in share-based payment transactions are participating securities. The guidance holds that unvested share-based payment awards that contain non-forfeitable rights to dividends or dividend equivalents are “participating securities” and therefore should be included in computing earnings per share using the two-class method. The guidance is effective for financial statements issued in fiscal years beginning after December 15, 2008, and interim periods within those years. The Company implemented the Staff Position on January 1, 2009. The Staff Position did not have an impact on the Company’s financial statements.

In December 2008, the FASB issued guidance on Employers’ Disclosures about Pensions and Other Postretirement Benefits, which requires disclosures about plan assets to be provided for fiscal years ending after December 15, 2009. Under the guidance disclosures requirements include information about how investment allocation decisions are made, the fair value of each major category of plan assets and the inputs and valuation techniques used to develop fair value measurements of plan assets. The Company adopted the guidance during the fourth quarter of 2009. The adoption of this guidance did not have a material impact on the Company’s financial statements.

Effective January 1, 2009, the Company adopted policies related to accounting for non-controlling interests in consolidated financial statements, which clarified that a non-controlling interest in a subsidiary is an ownership interest in the consolidated entity that should be reported as equity or capital in the consolidated financial statements. The adoption of these policies did not have an impact on the Company’s financial statements.

In June 2009, guidance was issued for the accounting for transfers of financial assets, and is effective for annual reporting periods beginning after November 15, 2009. The guidance modifies the accounting and disclosure requirements regarding transfers of financial assets, including securitization transactions, and where companies have continuing exposure to the risks related to transferred financial assets. The statement eliminates the concept of a “qualifying special-purpose entity,” changes the requirements for derecognizing financial assets and requires additional disclosures about transfers of financial assets. The Company does not expect the guidance to have an impact on its financial statements.

In June 2009, the FASB issued the FASB Accounting Standards Codification (Codification) which identifies the sources of accounting principles and the framework for selecting the principles used in the preparation of its financial statements that are presented in conformity with GAAP. Effective September 30, 2009, the Company adopted the Codification, which did not have a material impact on the Company’s financial statements.

NOTE 2 INVESTMENT SECURITIES

The Company accounts for investment securities in accordance with the Accounting for Certain Investments in Debt and Equity Securities Topic of FASB ASC. This standard requires classification of the investment portfolio into three categories: held to maturity, trading, and available for sale.

The Company classifies as held to maturity those securities, which the Company has the intent and ability to hold through their stated maturity date. Investment securities, which are classified as held to maturity, are carried at cost, adjusted for amortization of premiums and accretion of discounts. Gains and losses are determined using the specific identification method. For the years ended December 31, 2009, 2008, and 2007, losses of \$44,966, \$75,227, and \$74,519, respectively, were recognized on the disposition of investment securities.

Investment securities as of December 31, 2009 and 2008, are as follows:

| | <u>2009</u> | <u>2008</u> |
|---------------------------------------------------------------------------------|--------------------|--------------------|
| Investments Held to Maturity | | |
| Debt Securities Issued by States and Political Subdivisions of States | \$4,837,620 | \$5,131,624 |
| Preferred Stocks | <u>129,244</u> | <u>129,244</u> |
| Total Investments Held to Maturity | <u>\$4,966,864</u> | <u>\$5,260,868</u> |

The contractual maturities of investment securities held to maturity are as follows:

| <u>Maturity Date</u> | <u>Amount</u> |
|--------------------------|--------------------|
| Within 1 year | \$2,474,487 |
| 1-5 Years | 1,605,022 |
| 6-10 Years | 115,513 |
| After 10 Years | <u>771,842</u> |
| | <u>\$4,966,864</u> |

The amortized cost, gross unrealized holding gains, gross unrealized holding losses, and fair value of held-to-maturity securities by major security type and class of security at December 31, 2009 and 2008, were as follows:

| <u>At December 31, 2009</u> | <u>Amortized Cost</u> | <u>Gross Unrealized Holding Gains</u> | <u>Gross Unrealized Holding Losses</u> | <u>Fair Value</u> |
|---------------------------------------------------------------------------------|---------------------------|---------------------------------------------------|----------------------------------------------------|--------------------|
| Debt Securities Issued by States and Political Subdivisions of States | \$4,837,620 | \$5,421 | \$ (89,179) | \$4,753,862 |
| Preferred Stocks | <u>129,244</u> | <u>—</u> | <u>(43,502)</u> | <u>85,742</u> |
| | <u>\$4,966,864</u> | <u>\$5,421</u> | <u>\$(132,681)</u> | <u>\$4,839,604</u> |
| <u>At December 31, 2008</u> | | | | |
| Debt Securities Issued by States and Political Subdivisions of States | \$5,131,624 | \$3,134 | \$(168,460) | \$4,966,298 |
| Preferred Stocks | <u>129,244</u> | <u>—</u> | <u>(32,642)</u> | <u>96,602</u> |
| | <u>\$5,260,868</u> | <u>\$3,134</u> | <u>\$(201,102)</u> | <u>\$5,062,900</u> |

NOTE 2 INVESTMENT SECURITIES (Continued)

The following tables show the Company's investments' gross unrealized losses and fair value, aggregated by investment category and length of time that individual securities have been in a continuous unrealized loss position at December 31, 2009 and 2008, respectively. The unrealized losses on investments in debt securities issued by states and political subdivisions of states were caused by interest rate increases. The contractual terms of these investments do not permit the issuer to settle the securities at a price less than the amortized cost of the investment. Because the Company has the ability and intent to hold these investments until a market price recovery or maturity, these investments are not considered other-than-temporarily impaired. The Fair Value of all investment securities were measured using quoted prices in active markets, Level 1 inputs.

| | Less than 12 Months | | 12 Months or More | | Total | |
|------------------------------------------------------------------------|---------------------|-------------------|--------------------|-------------------|--------------------|-------------------|
| | Fair Value | Unrealized Losses | Fair Value | Unrealized Losses | Fair Value | Unrealized Losses |
| Held at December 31, 2009 | | | | | | |
| Securities Issued by States and Political Subdivisions of States . . . | \$1,890,982 | \$19,712 | \$1,661,285 | \$ 69,467 | \$3,552,267 | \$ 89,179 |
| Preferred Stocks | — | — | 85,742 | 43,502 | 85,742 | 43,502 |
| | <u>\$1,890,982</u> | <u>\$19,712</u> | <u>\$1,747,027</u> | <u>\$112,969</u> | <u>\$3,638,009</u> | <u>\$132,681</u> |

| | Less than 12 Months | | 12 Months or More | | Total | |
|------------------------------------------------------------------------|---------------------|-------------------|--------------------|-------------------|--------------------|-------------------|
| | Fair Value | Unrealized Losses | Fair Value | Unrealized Losses | Fair Value | Unrealized Losses |
| Held at December 31, 2008 | | | | | | |
| Securities Issued by States and Political Subdivisions of States . . . | \$1,102,920 | \$42,068 | \$2,714,872 | \$126,392 | \$3,817,792 | \$168,460 |
| Preferred Stocks | — | — | 96,602 | 32,642 | 96,602 | 32,642 |
| | <u>\$1,102,920</u> | <u>\$42,068</u> | <u>\$2,811,474</u> | <u>\$159,034</u> | <u>\$3,914,394</u> | <u>\$201,102</u> |

NOTE 3 INCOME TAXES

The Company accounts for income taxes under the Accounting For Income Taxes Topic of FASB ASC.

The provisions for income taxes are summarized as follows:

| | 2009 | | 2008 | | 2007 | |
|-------------------|------------------|------------------|--------------------|--------------------|--------------------|--------------------|
| | Current | Deferred | Current | Deferred | Current | Deferred |
| Federal | \$168,074 | \$195,969 | \$1,278,620 | \$1,128,226 | \$3,540,065 | \$3,057,676 |
| State | 37,260 | 42,712 | 252,881 | 241,192 | 690,433 | 472,046 |
| Total | <u>\$205,334</u> | <u>\$238,681</u> | <u>\$1,531,501</u> | <u>\$1,369,418</u> | <u>\$4,230,498</u> | <u>\$3,529,722</u> |

Deferred tax assets and liabilities are recognized for the future tax consequences attributable to the differences between the financial statement carrying amounts of existing assets and liabilities and their respective tax bases and operating loss and tax credit carryforwards. Deferred tax assets and liabilities are measured using enacted tax rates expected to apply to taxable income in the years in which those temporary differences are expected to be recovered or settled. The effect on deferred tax assets and liabilities of a change in tax rates is recognized in income in the period that includes the enactment date.

NOTE 3 INCOME TAXES (Continued)

The sources of these differences and the related deferred income tax assets (liabilities) are summarized as follows:

| | DEFERRED TAX | |
|--------------------------------------------------|-----------------------|-----------------------|
| | 2009 | 2008 |
| Deferred Tax Assets | | |
| Depreciation | \$ 2,075,433 | \$ 1,585,801 |
| Deferred Compensation | 831,652 | 802,480 |
| Charitable Contributions Carryforward | 1,963,398 | 1,967,695 |
| Interest Rate Swap | 264,437 | 365,600 |
| Deferred Lease Expense | 1,357,809 | 1,305,315 |
| Pension and Other Post Retirement Benefits | 630,090 | 1,310,883 |
| Stock Options | 551,098 | 459,321 |
| Gross Deferred Tax Assets | 7,673,917 | 7,797,095 |
| Less-Valuation Allowance | (2,093,381) | (2,043,584) |
| Net Deferred Tax Assets | 5,580,536 | 5,753,511 |
| Deferred Tax Liabilities | | |
| Sales of Real Estate | (39,208,078) | (38,455,129) |
| Basis Difference in Joint Venture | (342,638) | (342,734) |
| Other—Net | (305,188) | (272,084) |
| Total Deferred Tax Liabilities | (39,855,904) | (39,069,947) |
| Net Deferred Tax Liability | <u>\$(34,275,368)</u> | <u>\$(33,316,436)</u> |

In assessing the realizability of deferred tax assets, management considers whether it is more likely than not that some portion or all of the deferred tax assets will not be realized. The ultimate realization of deferred tax assets is dependent upon the realization of future taxable income during the periods in which those temporary differences become deductible. Management considers past history, the scheduled reversal of taxable temporary differences, projected future taxable income, and tax planning strategies in making this assessment. As of December 31, 2009 and 2008, management believes it is more likely than not that a portion of the Company's deferred tax assets will not be realized. A valuation allowance for deferred tax assets is provided when it is more likely than not that some portion of all of the deferred tax assets will not be realized. As of December 31, 2009 and 2008, the valuation allowance was \$2,093,381, and \$2,043,584, respectively.

The valuation allowance is primarily related to charitable contribution carryforwards, in addition to basis difference in joint ventures. The valuation allowance was unchanged in 2008, with an increase of \$49,797 in 2009. The change in valuation allowance in 2009 was due to modification of management's projections of the utilization of the charitable contribution over the five-year carryforward period. Taxes related to the deduction for charitable contribution carryforwards, which expire in 2011 and 2012, approximate \$1,615,000 and \$65,000, respectively.

NOTE 3 INCOME TAXES (Continued)

Following is a reconciliation of the income tax computed at the federal statutory rate of 35% for 2009, 2008, and 2007:

| | CALENDAR YEAR | | |
|-------------------------------------------------------------|------------------|--------------------|--------------------|
| | 2009 | 2008 | 2007 |
| Income Tax Expense Computed at Federal Statutory Rate | \$435,605 | \$2,707,537 | \$7,452,570 |
| Increase (Decrease) Resulting from: | | | |
| State Income Tax, Net of Federal Income Tax Benefit | 47,367 | 321,148 | 783,881 |
| Tax Exempt Interest Income | (83,161) | (120,814) | (166,136) |
| Charitable Contribution of Land | — | — | (578,625) |
| Adjustment to Valuation Allowance | 49,797 | — | 393,464 |
| Other Reconciling Items | (5,593) | (6,952) | (124,934) |
| Provision for Income Taxes | <u>\$444,015</u> | <u>\$2,900,919</u> | <u>\$7,760,220</u> |

The Company files a consolidated income tax return in the United States Federal jurisdiction and the States of Florida, Georgia, and North Carolina. The Internal Revenue Service has audited the federal tax returns through the year 2006, with all proposed adjustments settled. The Company recognizes all potential accrued interest and penalties to unrecognized tax benefits in income tax expense.

Income taxes of \$1,924,972 were paid in the year ended December 31, 2009.

NOTE 4 NOTES RECEIVABLE

Notes receivable in 2008 related to the financing of real estate sales, bore interest at a market rate, and were recorded at face value. Amounts collected on notes receivable are included in net cash provided by operating activities in the consolidated statements of cash flows.

Notes Receivable consisted of the following:

| | December 31, | |
|--------------------------------------------------------------------------------------------------------------------------|--------------|--------------------|
| | 2009 | 2008 |
| Mortgage notes with fixed interest rates between 6.5 – 7.25% collateralized by real estate, | \$ — | \$1,995,376 |
| Mortgage note with variable interest rate at 200 basis points above the 30-day London Interbank Offer Rate “LIBOR” | — | 2,158,317 |
| | <u>\$ —</u> | <u>\$4,153,693</u> |

The Company completed foreclosure on two notes during 2009 in the amounts of \$1,845,376 and \$2,158,317. The \$1,845,376 mortgage note receivable was collateralized by a first mortgage on 6 acres of vacant commercial property with Interstate 95 frontage. The \$2,158,317 mortgage note receivable was collateralized by a first mortgage on 317 acres of land with both residential and commercial land use designations. Both properties are located in Daytona Beach, FL. The notes receivable were written off and the land reacquired with no gains or losses recognized on the transactions. In measuring for impairment of the loans, we evaluated the fair value of the property collateralizing the loan based on our knowledge of the Daytona Beach real estate market as the largest landowner, and subsequently obtained independent appraisals to support the book values.

NOTE 4 NOTES RECEIVABLE (Continued)

Following are the amounts of recorded investments in the impaired notes receivable as of:

| | December 31, | |
|-----------------------------------------------------------------|--------------|--------------------|
| | 2009 | 2008 |
| Investment in Impaired Notes with Allowance for Losses | \$ — | \$ — |
| Investment in Impaired Notes with No Allowance for Losses | — | 1,945,912 |
| | <u>\$ —</u> | <u>\$1,945,912</u> |

Following are average investments in impaired loans and accrued interest income recorded for the periods ending:

| | December 31, | |
|-------------------------------------------------------------------------------|--------------|-----------|
| | 2009 | 2008 |
| Average Investment in Impaired Loans | \$3,117,898 | \$773,325 |
| Interest Income Recorded on Impaired Loans while Loans were Impaired | — | — |
| Interest Income Recognized Using Cash-Basis Method of Accounting | — | — |

There was no allowance for credit losses during the periods as we looked at the fair value of the collateral supporting the notes receivable and determined no provision was necessary.

As a policy, interest income is not accrued once the note has been determined to be impaired, and no cash receipts were received on the impaired notes.

NOTE 5 LAND AND DEVELOPMENT COSTS

Land and development costs at December 31, 2009 and 2008, are summarized as follows:

| | December 31, | |
|----------------------------------|---------------------|---------------------|
| | 2009 | 2008 |
| Undeveloped Land | \$ 1,004,607 | \$ 1,004,607 |
| Land and Development Costs | 25,695,887 | 17,968,531 |
| | <u>\$26,700,494</u> | <u>\$18,973,138</u> |

NOTE 6 NOTES PAYABLE

Notes Payable consisted of the following:

| | December 31, | |
|----------------------------------------------------------------------------------------------------------------------------------------------------------------------------------------------------------------------|---------------------|--------------------|
| | 2009 | 2008 |
| MORTGAGE NOTES PAYABLE | | |
| Payable monthly based on 20-year amortization, interest floating based on the 30-day LIBOR Market Index rate plus 1.25%. Principal balance due July 2012 (See discussion of interest rate swap below) | \$6,239,967 | \$6,532,420 |
| LINE OF CREDIT | | |
| A line of credit totaling \$20,000,000 at December 31, 2009, expiring March 2010, with interest at the 30-day LIBOR Market Index rate plus 1.4% ... | 6,970,422 | 2,017,895 |
| | <u>\$13,210,389</u> | <u>\$8,550,315</u> |

NOTE 6 NOTES PAYABLE (Continued)

The required annual principal payments on notes payable are as follows:

| <u>Year Ending December 31,</u> | <u>Amount</u> |
|---------------------------------|---------------------|
| 2010 | \$ 7,259,616 |
| 2011 | 338,447 |
| 2012 | 5,612,326 |
| 2013 | — |
| | <u>\$13,210,389</u> |

Interest expense was \$408,739, \$351,574, and \$394,603, net of capitalized interest, for 2009, 2008, and 2007, respectively.

On April 8, 2002, the Company entered into an interest rate swap agreement to mitigate the interest rate risk on the variable rate debt of the Company. The Company expects the cash flows related to the swap to be highly effective in offsetting the changes in the cash flows of the variable rate debt.

On July 1, 2002, the Company entered into an \$8,000,000 long-term financing arrangement. The new variable rate debt is for a ten-year term, which has been fixed at a rate of 7.35% through the use of an interest rate swap and secured by approximately 3,000 acres of the Company's most westerly lands until March 29, 2007 at which time the agreement was amended and the property was released as collateral.

The change in the fair value of the interest rate swap, from its inception, has resulted in the recording of an accrued liability in the amount of \$685,513 and \$947,765 at December 31, 2009 and 2008, respectively. The cumulative change in fair value, net of applicable taxes, in the amount of \$421,076 and \$582,165 at December 31, 2009 and 2008, respectively, has been recorded as accumulated other comprehensive loss, a component of shareholders' equity. This activity represents a non-cash transaction. The notional amount of the interest rate swap was equivalent to the outstanding balance of the financing, \$6,239,967 at December 31, 2009, and \$6,532,420 at December 31, 2008.

In addition, the Company has an unsecured \$20,000,000 revolving line of credit with the same financing source. There was a balance of \$6,970,422 outstanding on the line of credit at December 31, 2009 with an outstanding balance of \$2,017,895 on the line of credit at December 31, 2008. The Company had letters of credit outstanding totaling \$127,351 and \$257,351 at December 31, 2009 and 2008, respectively. These letters of credit guarantee development work will be completed and reserve capacity under the line of credit. The balance available to borrow on the line of credit was \$12,902,227 and \$17,724,754 at December 31, 2009 and 2008, respectively.

On March 9, 2010, we received a commitment letter for the renewal of the line of credit, which comes due March 29, 2010, for the requested amount of \$15 million. The term of the renewal, which is unsecured, is for a one year or two year period, at our option and will expire in March 2011 or March 2012, depending on which option is selected. The interest rate will be at the 1-month LIBOR plus a spread of 281 – 310 basis points, with commitment fees and unused capacity fees of .25 – .50% based on the option chosen.

NOTE 7 PENSION PLAN

The Company maintains a defined benefit plan for all employees who have attained the age of 21 and completed one year of service. The pension benefits are based primarily on years of service and the average compensation for the highest five years during the final ten years of employment. The benefit formula generally provides for a life annuity benefit.

The Company uses a December 31 measurement date.

NOTE 7 PENSION PLAN (Continued)

Following are the components of the Net Period Benefit Cost:

| | December 31, | | |
|-------------------------------------------------------|-------------------|-------------------|-------------------|
| | 2009 | 2008 | 2007 |
| Service Cost | \$ 355,211 | \$ 336,368 | \$ 290,862 |
| Interest Cost | 451,011 | 435,201 | 402,731 |
| Expected Return on Plan Assets | (464,385) | (520,466) | (505,184) |
| Amortization of Unrecognized Transition Gain | (7,487) | (7,487) | (7,487) |
| Amortization of Unrecognized Prior Service Cost | 21,218 | 21,218 | 21,218 |
| Amortization of Net Loss from Earlier Periods | 175,612 | 65,785 | 36,261 |
| Net Periodic Benefit Cost | <u>\$ 531,180</u> | <u>\$ 330,619</u> | <u>\$ 238,401</u> |

The change in projected benefit obligation is as follows:

| | December 31, | |
|-----------------------------------------------|--------------------|--------------------|
| | 2009 | 2008 |
| Benefit Obligation at Beginning of Year | \$8,195,631 | \$7,185,160 |
| Service Cost | 355,211 | 336,368 |
| Interest Cost | 451,011 | 435,201 |
| Actuarial (Gain)/Loss | (495,209) | 673,482 |
| Benefits and Plan Expenses Paid | <u>(400,328)</u> | <u>(434,580)</u> |
| Benefit Obligation at End of Year | <u>\$8,106,316</u> | <u>\$8,195,631</u> |

The change in plan assets is as follows:

| | December 31, | |
|------------------------------------------------------|--------------------|--------------------|
| | 2009 | 2008 |
| Fair Value of Plan Assets at Beginning of Year | \$5,068,401 | \$5,582,164 |
| Actual Return on Plan Assets | 1,515,309 | (907,926) |
| Employer Contribution | 545,215 | 828,743 |
| Plan Expenses Paid | (70,772) | (68,049) |
| Benefits Paid | <u>(329,556)</u> | <u>(366,531)</u> |
| Fair Value of Plan Assets at End of Year | <u>\$6,728,597</u> | <u>\$5,068,401</u> |

The funded status of the pension obligation consists of the following:

| | December 31, | |
|-------------------------------------------------------------------|----------------------|----------------------|
| | 2009 | 2008 |
| Estimated Pension Benefit Obligation | | |
| Accumulated Benefit Obligation | \$(7,708,971) | \$(7,563,343) |
| Additional Benefits Based on Estimated Future Salary Levels | (397,345) | (632,288) |
| Projected Benefit Obligation | (8,106,316) | (8,195,631) |
| Fair Value of Plan Assets | <u>6,728,597</u> | <u>5,068,401</u> |
| Accrued Pension Liability | <u>\$(1,377,719)</u> | <u>\$(3,127,230)</u> |

The accumulated benefits obligation at December 31, 2009 and 2008 was \$7,708,971 and \$7,563,343, respectively.

NOTE 7 PENSION PLAN (Continued)

The actuarial assumptions made to determine the projected benefit obligation and the fair value of plan assets are as follows:

| | <u>December 31,</u> | |
|---------------------------------------------|---------------------|-------------|
| | <u>2009</u> | <u>2008</u> |
| Weighted Average Discount Rate | 6.00% | 6.00% |
| Weighted Average Asset Rate of Return | 9.00% | 9.00% |
| Compensation Scale | 5.00% | 5.00% |

The Company uses the “Citigroup Pension Liability Index” to determine the discount rate. The weighted average asset rate of return is primarily based on historical returns of the portfolio as a whole.

OTHER PENSION PLAN DISCLOSURE INFORMATION

Amortization Periods:

The transition liability (asset) re-established on January 1, 2001, is being amortized in level amounts over 11.07 years.

The excess of the unrecognized (gain) or loss (if any) over the larger of 10% of the projected benefit obligation or 10% of the market related value of assets is amortized in level amounts over 11.88 years.

The prior service cost re-established on January 1, 2001, is being amortized in level amounts over 11.07 years.

The prior service cost established on January 1, 2002, is being amortized in level amounts over 11.67 years.

Funding Policy:

Periodic employer contributions are made in conformance with minimum funding requirements and maximum deductible limitations.

Benefit Payments and Other Disbursements:

During the measurement period, disbursements from plan assets were as follows:

| | |
|-------------------------------|------------------|
| Benefit Payments | \$329,556 |
| Administrative Expenses | <u>70,772</u> |
| Total | <u>\$400,328</u> |

Unrecognized (Gain) or Loss:

The unrecognized gain or (loss) determined subsequent to last year’s measurement date is determined as follows:

| | |
|---------------------------------------------------------------------------------------------------------------|--------------------|
| Liability gain determined from the January 1, 2009 census and included in this year’s net periodic cost | \$ 495,209 |
| Asset gain occurring over the measurement period | <u>1,050,924</u> |
| Total unrecognized gain | <u>\$1,546,133</u> |

NOTE 7 PENSION PLAN (Continued)

Plan Assets

The Company’s investment policy for pension funds is to achieve four major objectives as follows:

- 1) Growth in the invested assets to maintain future purchasing power.
- 2) Provide a stable, increasing stream of investment income to support needs.
- 3) Ensure the preservation of asset values equal to or greater than the nominal book value of assets over the intermediate term or a complete economic cycle, whichever is longer.
- 4) Maintain liquidity.

The Company’s overall investment strategy is to achieve a mix of approximately 75-85% of investments for long-term growth and 15-25% for near-term benefit payments with a diversification of asset types and strategies.

The allocation of investments are targeted at 60% in common equities and 40% in fixed income securities, exclusive of cash and cash equivalents with a typical 10% range of fluctuation. Equity securities primarily include investments in large-cap, mid-cap, and small-cap companies primarily located in the United States. Fixed income securities primarily include corporate bonds of diversified industries also primarily located in the United States. No single security, except short-term obligations of the U.S. government, shall constitute more than 4% of consolidated assets.

The plan’s weighted average asset allocations at December 31, 2009 and 2008 by asset category are as follows:

| | <u>December 31,</u> | |
|---------------------------------------|---------------------|-------------|
| | <u>2009</u> | <u>2008</u> |
| Equity Securities | 41% | 46% |
| Fixed Income Securities | 34% | 39% |
| Cash and Money Market Funds | 25% | 15% |
| Total | <u>100%</u> | <u>100%</u> |

The following is a table of the Fair Values of Plan Assets and Fair Value Measurements at December 31, 2009:

| <u>Asset Category</u> | <u>Total</u> | <u>Quoted Prices in Active Markets (Level 1 Inputs)</u> |
|-------------------------------------|--------------------|-----------------------------------------------------------------|
| Cash and Cash Equivalents | \$1,706,501 | \$1,706,501 |
| Equity Securities | 2,724,637 | 2,724,637 |
| Fixed Income Securities | 2,297,459 | 2,297,459 |
| Total | <u>\$6,728,597</u> | <u>\$6,728,597</u> |

The long-term rate of return on plan assets represents an estimate of long-term returns on an investment portfolio consisting of a mixture of equities, fixed income and alternative investments. When determining the long-term rate of return on plan assets, the Company considers long-term rates of return on the asset classes (both historical and forecasted) in which the Company expects the pension funds to be invested.

Cash Flows:

Contributions

The Company makes periodic contributions in accordance with minimum funding requirements and maximum allowable deductions. It is estimated the 2010 contribution will be in the \$550,000 to \$600,000 range.

NOTE 7 PENSION PLAN (Continued)

Estimated Future Benefit Payments

The following benefit payments, which reflect expected future service as appropriate, are expected to be paid.

| <u>Year Ending December 31,</u> | <u>Amount</u> |
|---------------------------------|---------------|
| 2010 | \$ 397,700 |
| 2011 | 440,400 |
| 2012 | 609,900 |
| 2013 | 712,500 |
| 2014 | 716,600 |
| 2015-2019 | 3,887,000 |

The following assumptions have been made regarding estimated benefit payments:

All currently retired participants survive through 2019.

All currently active participants survive and retire on their normal retirement dates.

Earnings are assumed to increase at the rate of 5% per year for active participants to their normal retirement dates.

NOTE 8 POST-RETIREMENT BENEFIT PLANS OTHER THAN PENSIONS

The Company has a current policy regarding post-retirement benefit programs for certain health care and life insurance benefits for eligible retired employees. All full-time employees become eligible to receive life benefits if they retire after reaching age 55 with 20 or more years of service, and supplemental medicare benefits if they reach age 65 and 20 years of service. The post-retirement health care plan is contributory with retiree contributions adjusted annually; the life insurance plan is non-contributory up to \$5,000 of coverage.

The Company recognizes post-retirement expenses in accordance with the Employers' Accounting for Post-Retirement Benefits Other Than Pensions Topic of FASB ASC, which requires that expected costs of post-retirement benefits be charged to expense during the years the employees render service. The accrued post-retirement benefit cost reflected in the consolidated balance sheet in accrued liabilities at December 31, 2009 and 2008, was \$255,697 and \$271,040, respectively.

NOTE 9 STOCK OPTION PLAN

The Company maintains a stock option plan ("the Plan") pursuant to which 500,000 shares of the Company's common stock may be issued. The Plan in place was approved at the April 25, 2001 shareholders' meeting. Under the Plan, the option exercise price equals the stock market price on the date of grant. The options generally vest over five years and all expire after ten years. The Plan provides for the grant of (1) incentive stock options, which satisfy the requirements of Internal Revenue Code (IRC) Section 422, and (2) non-qualified options, which are not entitled to favorable tax treatment under IRC Section 422. No optionee may exercise incentive stock options in any calendar year for shares of common stock having a total market value of more than \$100,000 on the date of grant (subject to certain carryover provisions). In connection with the grant of non-qualified options, a stock appreciation right for each share covered by the option may also be granted. The stock appreciation right will entitle the optionee to receive a supplemental payment, which may be paid in whole or in part in cash or in shares of common stock equal to a portion of the spread between the exercise price and the fair market value of the underlying share at the time of exercise. All options granted to date have been non-qualified options.

NOTE 9 STOCK OPTION PLAN (Continued)

The Company accounts for stock options as required by the Share-Based Payment Topic of FASB ASC. The provisions require the classification of share-based payment arrangements as liability or equity instruments. Both the Company's stock options and stock appreciation rights are liability classified awards and are required to be remeasured to fair value at each balance sheet date until the award is settled. The Company recognizes compensation equal to remeasured fair value prorated over the remaining vesting period of the award.

Amounts recognized in the financial statements for stock options and stock appreciation rights are as follows:

| | <u>Year Ended December 31,</u> | | |
|-------------------------------------------------------------------|--------------------------------|-------------------|---------------------|
| | <u>2009</u> | <u>2008</u> | <u>2007</u> |
| Total Cost of Share-Based Plans Charged Against Income (Added To) | | | |
| Before Tax Effect | \$253,425 | \$(1,966,781) | \$1,341,661 |
| Income Tax Expense (Benefit) | | | |
| Recognized in Income | <u>\$ (97,759)</u> | <u>\$ 758,686</u> | <u>\$ (517,546)</u> |

The fair value of each share option and stock appreciation right is estimated on the measurement date using the Black-Scholes option pricing model based on assumptions noted in the following table. Expected volatility is based on the historical volatility and other factors of the Company. The Company has elected to use the simplified method of estimating the expected term of the options and stock appreciation rights.

Due to the small number of employees included in the Plan, the Company uses the specific identification method to estimate forfeitures and includes all participants in one group. The risk-free rate for periods within the contractual term of the share option is based on the U.S. Treasury rates in effect at the time of measurement.

The Company issues new, previously unissued, shares as options are exercised.

Following are assumptions used in determining the fair value of stock options and stock appreciation rights:

| <u>Assumptions at December 31,</u> | <u>2009</u> | <u>2008</u> | <u>2007</u> |
|------------------------------------|-------------|-------------|-------------|
| Expected Volatility | 37.97% | 31.73% | 27.54% |
| Expected Dividends | .57% | .26% | .64% |
| Expected Term | 4 years | 4 years | 4 years |
| Risk-Free Rate | 2.03% | 1.22% | 3.32% |

A summary of share option activity under the Plan as of December, 31 2009, and changes during the year ended is presented below:

STOCK OPTIONS FOR THE YEAR ENDED DECEMBER 31, 2009

| | <u>Shares</u> | <u>Wtd. Avg. Ex. Price</u> | <u>Wtd. Avg. Remaining Contractual Term (Years)</u> | <u>Aggregate Intrinsic Value</u> |
|----------------------------------------|----------------|--------------------------------|---------------------------------------------------------------------|------------------------------------------|
| Outstanding December 31, 2008 | 226,000 | \$58.11 | | |
| Granted | 55,000 | 33.16 | | |
| Exercised | (1,600) | 25.88 | | |
| Expired | (23,000) | 61.32 | | |
| Outstanding December 31, 2009 | <u>256,400</u> | <u>52.67</u> | <u>6.96</u> | <u>\$283,108</u> |
| Exercisable at December 31, 2009 | <u>88,800</u> | <u>\$51.90</u> | <u>5.48</u> | <u>\$185,208</u> |

NOTE 9 STOCK OPTION PLAN (Continued)

STOCK APPRECIATION RIGHTS FOR THE YEAR ENDED DECEMBER 31, 2009

| | Shares | Wtd. Avg. Fair Value | Wtd. Avg. Remaining Contractual Term (Years) | Aggregate Intrinsic Value |
|----------------------------------------|----------------|----------------------------|----------------------------------------------------------|---------------------------------|
| Outstanding December 31, 2008 | 226,000 | \$3.12 | | |
| Granted | 55,000 | 4.76 | | |
| Exercised | (1,600) | 2.42 | | |
| Expired | (23,000) | 2.41 | | |
| Outstanding December 31, 2009 | <u>256,400</u> | <u>3.69</u> | <u>6.96</u> | <u>\$152,443</u> |
| Exercisable at December 31, 2009 | <u>88,000</u> | <u>\$2.74</u> | <u>5.48</u> | <u>\$ 99,727</u> |

In connection with the exercise of 1,600 option shares, 413 shares of stock were issued and 1,187 shares of stock were surrendered to relieve the stock option liability by \$11,632. Cash proceeds of \$2,059 were received on the exercise of the stock options.

The weighted-average grant date fair value at December 31, 2009, of options granted during 2009, 2008, and 2007 was \$13.48, \$7.52, and \$2.79 respectively. Stock appreciation rights granted during 2009, 2008, and 2007 had weighted-average fair values of \$7.26, \$4.05, and \$1.50, respectively. The total intrinsic value of options exercised for the year ended December 31, 2009, 2008, and 2007 was \$11,632, \$84,000, and \$2,515,863, respectively. Stock appreciation rights exercised during the years ended December 31, 2009, 2008, and 2007 had intrinsic values of \$3,878, \$36,615, and 1,291,749, respectively.

The total fair value of shares vested during the three years ended December 31, 2009 were \$368,224, \$319,790, and \$789,424, respectively.

As of December 31, 2009, there was \$1,278,162, valued at fair value, of total unrecognized compensation costs related to non-vested stock options and stock appreciation rights granted under the Plan. That cost is expected to be recognized over a weighted-average period of 1.43 years.

The liability for stock options and stock appreciation rights valued at fair value, reflected on the consolidated balance sheet at December 31, 2009 and 2008, was \$1,428,641 and \$1,190,725, respectively.

NOTE 10 EARNINGS PER SHARE

Basic earnings per common share were computed by dividing net income by the weighted average number of shares of common stock outstanding during the year. Diluted earnings per common share were determined based on the assumption of the conversion of stock options using the treasury stock method at average market prices for the periods.

| | Calendar Year | | |
|------------------------------------------------------------------------------------|-------------------|--------------------|---------------------|
| | 2009 | 2008 | 2007 |
| Income Available to Common Shareholders: | | | |
| Net Income | <u>\$ 800,570</u> | <u>\$4,834,900</u> | <u>\$13,532,838</u> |
| Weighted Average Shares Outstanding | 5,724,067 | 5,727,183 | 5,716,564 |
| Common Shares Applicable to Stock Options Using the Treasury Stock Method | | — | 15,360 |
| Total Shares Applicable to Diluted Earnings Per Share | <u>5,724,067</u> | <u>5,727,183</u> | <u>5,731,924</u> |
| Per Share Information: | | | |
| Basic Net Income Per Share | <u>\$ 0.14</u> | <u>\$ 0.84</u> | <u>\$ 2.37</u> |
| Diluted Net Income Per Share | <u>\$ 0.14</u> | <u>\$ 0.84</u> | <u>\$ 2.36</u> |

NOTE 10 EARNINGS PER SHARE (Continued)

No impact was considered on the conversion of stock options during the 2009 and 2008 as the effect would be antidilutive. The number of anti-dilutive common shares for 2009 and 2008 were 171,375 and 82,897, respectively.

NOTE 11 COMMITMENTS AND CONTINGENCIES

The Company leases, as lessee, certain equipment, land, and improvements under operating leases.

Minimum future rental payments under non-cancelable operating leases having remaining terms in excess of one year as of December 31, 2009, are summarized as follows:

| <u>Year Ending December 31,</u> | <u>Amounts</u> |
|----------------------------------------|--------------------|
| 2010 | \$ 709,898 |
| 2011 | 571,029 |
| 2012 | 549,739 |
| 2013 | 595,553 |
| 2014 | 500,000 |
| 2015 and thereafter (cumulative) | 3,833,333 |
| Total | <u>\$6,759,552</u> |

Rental expense under all operating leases amounted to \$1,085,741, \$1,106,031, and \$1,051,487, for the years ended December 31, 2009, 2008, and 2007, respectively.

Additionally, the Company, as lessor, leases certain land, buildings, and improvements under operating leases.

Minimum future rental receipts under non-cancelable operating leases having remaining terms in excess of one year as of December 31, 2009, are summarized as follows:

| <u>Year Ending December 31,</u> | <u>Amounts</u> |
|----------------------------------------|----------------------|
| 2010 | \$ 9,199,207 |
| 2011 | 8,679,109 |
| 2012 | 8,643,166 |
| 2013 | 8,689,640 |
| 2014 | 8,712,821 |
| 2015 and thereafter (cumulative) | 172,805,730 |
| Total | <u>\$216,729,673</u> |

At the end of 2008, the Company focused its efforts on obtaining federal stimulus dollars to extend Dunn Avenue, a major east/west thoroughfare bridging Interstate 95, to provide improved access to Company lands. In June, the Company entered into a cost sharing agreement with the City of Daytona Beach and the County of Volusia that will allow the use of federal funds to build this road project. The Company's cost participation projected to be \$880,000 (originally estimated at \$1,125,000) is due in 2010.

In November 2008, the Company's Board of Directors authorized the repurchase by the Company from time to time, of up to \$8 million of its common stock. Through December 31, 2009 the Company has repurchased 4,660 shares at a total cost of \$104,648.

NOTE 11 COMMITMENTS AND CONTINGENCIES (Continued)

In December 2008, Wintergreen Advisers, LLC (“Wintergreen”), a Delaware limited liability company and the largest shareholder of the Company, filed a Verified application for Court Ordered Inspection of the Company’s business records in the Circuit Court of the Seventh Judicial Circuit in and for Volusia County, Florida. The complaint alleges that the Company has not satisfied Wintergreen’s second demand to inspect certain corporate records, and Wintergreen is seeking an order requiring the Company to make additional records available for inspection and also requiring the Company to pay Wintergreen’s costs, including reasonable attorney’s fees, reasonably incurred to obtain the order. The Company does not believe Wintergreen’s second demand meets Florida’s statutory requirements for the production of records and is vigorously defending this action.

NOTE 12 BUSINESS SEGMENT DATA

The Company primarily operates in three business segments: real estate, income properties, and golf operations. Real estate operations include land sales and development, agricultural operations, and leasing properties for oil and mineral exploration.

The Company evaluates performance based on profit or loss from operations before income taxes. The Company’s reportable segments are strategic business units that offer different products. They are managed separately because each segment requires different management techniques, knowledge, and skills.

NOTE 12 BUSINESS SEGMENT DATA (Continued)

Information about the Company's operations in different segments for each of the three years ended December 31, is as follows (amounts in thousands):

| | Calendar Year | | |
|---------------------------------------|------------------|------------------|------------------|
| | 2009 | 2008 | 2007 |
| Revenues: | | | |
| Real Estate | \$ 2,634 | \$ 4,565 | \$ 25,948 |
| Income Properties | 9,570 | 9,236 | 8,725 |
| Golf | 4,724 | 4,672 | 5,160 |
| General, Corporate, and Other | 231 | 2,082 | 3,243 |
| | <u>\$ 17,159</u> | <u>\$ 20,555</u> | <u>\$ 43,076</u> |
| Income (Loss): | | | |
| Real Estate | \$ 1,379 | \$ 2,972 | \$ 19,013 |
| Income Properties | 7,299 | 7,337 | 6,956 |
| Golf | (1,920) | (1,843) | (1,749) |
| General, Corporate, and Other | (5,513) | (730) | (2,927) |
| | <u>\$ 1,245</u> | <u>\$ 7,736</u> | <u>\$ 21,293</u> |
| Identifiable Assets: | | | |
| Real Estate | \$ 41,255 | \$ 36,917 | \$ 33,026 |
| Income Properties | 117,551 | 117,198 | 105,121 |
| Golf | 7,349 | 7,876 | 8,334 |
| General, Corporate, and Other | 10,420 | 11,155 | 25,352 |
| | <u>\$176,575</u> | <u>\$173,146</u> | <u>\$171,833</u> |
| Depreciation and Amortization: | | | |
| Real Estate | \$ 417 | \$ 400 | \$ 359 |
| Income Properties | 1,778 | 1,639 | 1,523 |
| Golf | 488 | 497 | 486 |
| General, Corporate, and Other | 89 | 119 | 99 |
| | <u>\$ 2,772</u> | <u>\$ 2,655</u> | <u>\$ 2,467</u> |
| Capital Expenditures: | | | |
| Real Estate | \$ 1,301 | \$ 3,732 | \$ 2,947 |
| Income Properties | 2,116 | 12,915 | 2 |
| Golf | 49 | 38 | 271 |
| General, Corporate, and Other | 21 | 1,468 | 2,394 |
| | <u>\$ 3,487</u> | <u>\$ 18,153</u> | <u>\$ 5,614</u> |

Income represents income (loss) from continuing operations before income taxes. Identifiable assets by industry are those assets that are used in the Company's operations in each industry. General corporate assets and assets used in the Company's other operations consist primarily of cash, investment securities, notes receivable, and property, plant, and equipment.

NOTE 13 RELATED PARTIES

William H. Davison, a director of the Company, retired as Chairman, President, and Chief Executive Officer of SunTrust Bank, East Central Florida in September 2007. The Company and SunTrust Bank are parties to a Master Loan and Security Agreement dated July 1, 2002, and amended March 29, 2007 for a term loan in the maximum amount of \$8,000,000; the largest aggregate amount of indebtedness outstanding on this loan at any time since January 1, 2007 was \$6,807,388 and interest paid on this loan during 2009 was \$453,183. The loans were made by SunTrust to the Company prior to Mr. Davison becoming a director of the Company.

The outstanding balance on this loan at December 31, 2009 was \$6,239,967. This loan was secured by approximately 3,000 acres of the Company's lands, until the agreement was amended on March 29, 2007 at which time the property was released as collateral. The Company and SunTrust Bank are also parties to a Master Loan and Security Agreement dated May 31, 2002, for an unsecured line of credit in the maximum of \$20,000,000; the largest aggregate amount of indebtedness outstanding on this line of credit at any time since January 1, 2008 was \$6,970,421 and interest paid on this loan during 2009 was \$93,200. The outstanding balance on this line of credit at December 31, 2009, was \$6,970,421. The Company had letters of credit outstanding at December 31, 2009, in the amount of \$127,351, which reserved capacity under the line of credit. The Company and SunTrust are also parties to an International Swap Dealers Association, Inc. Master Agreement dated April 8, 2002, with respect to an interest rate swap with regard to the \$8,000,000 term loan described above. The Company believes that these loans were made in the ordinary course of business, were made on substantially the same terms, including interest rates and collateral, as those prevailing at the time for comparable loans with persons not related to the lender, and did not involve more than the normal risk of collectability or present other unfavorable features.

NOTE 14 SUBSEQUENT EVENTS

The Company has evaluated subsequent events through March 12, 2010, the date of issuance of the accompanying consolidated financial statements. On March 9, 2010, we received a commitment letter for the renewal of the line of credit, which comes due March 29, 2010, for the requested amount of \$15 million. The term of the renewal, which is unsecured, is for a one year or two year period, at our option and will expire in March 2011 or March 2012, depending on which option is selected. The interest rate will be at the 1-month LIBOR plus a spread of 281 – 310 basis points, with commitment fees and unused capacity fees of .25 – .50% based on the option chosen.

QUARTERLY FINANCIAL DATA (UNAUDITED)
THREE MONTHS ENDED

| | March 31, | | June 30, | | September 30, | | December 31, | |
|-------------------------------------|-------------|-------------|-------------|-------------|---------------|-------------|--------------|-------------|
| | 2009 | 2008 | 2009 | 2008 | 2009 | 2008 | 2009 | 2008 |
| Income | \$ | \$ | \$ | \$ | \$ | \$ | \$ | \$ |
| Real Estate Operations: | | | | | | | | |
| Real Estate Sales | 6,093 | 74,844 | 1,620,800 | 2,186,210 | 959,081 | 97,735 | 47,973 | 2,206,810 |
| Sales and Other Income | (244,128) | (417,778) | (312,742) | (469,075) | (256,400) | (345,055) | (442,083) | (361,661) |
| Costs and Other Expenses | (238,035) | (342,934) | 1,308,058 | 1,717,135 | 702,681 | (247,320) | (394,110) | 1,845,149 |
| Income Properties | | | | | | | | |
| Leasing Revenues and Other In | 2,338,970 | 2,173,473 | 2,338,079 | 2,320,993 | 2,429,747 | 2,380,052 | 2,463,333 | 2,361,257 |
| income | (492,296) | (429,243) | (513,747) | (464,693) | (606,771) | (515,425) | (658,113) | (488,920) |
| Costs and Other Expenses | 1,846,674 | 1,744,230 | 1,824,332 | 1,856,300 | 1,822,976 | 1,864,627 | 1,805,220 | 1,872,337 |
| Golf Operations | | | | | | | | |
| Sales and Other Income | 1,422,767 | 1,379,551 | 1,262,204 | 1,288,152 | 881,775 | 814,067 | 1,157,079 | 1,189,848 |
| Costs and Other Expenses | (1,567,194) | (1,616,968) | (1,739,978) | (1,768,806) | (1,540,284) | (1,531,483) | (1,796,369) | (1,597,455) |
| | (144,427) | (237,417) | (477,774) | (480,654) | (658,509) | (717,416) | (639,290) | (407,607) |
| Total Real Estate Operations | 1,464,212 | 1,163,879 | 2,654,616 | 3,092,781 | 1,867,148 | 899,891 | 771,820 | 3,309,879 |
| Profit on Sales of Other | | | | | | | | |
| Real Estate Interests | 11,550 | 8,000 | 3,000 | 196,257 | 18,289 | 590,439 | 3,000 | 575,000 |
| Interest and Other Income | 66,547 | 302,628 | 39,447 | 142,122 | 55,718 | 91,089 | 33,897 | 176,657 |
| General and Administrative Expenses | 1,542,309 | 1,474,507 | 2,697,063 | 3,431,160 | 1,941,155 | 1,581,419 | 808,717 | 4,061,536 |
| | (1,025,417) | (1,221,000) | (2,386,052) | 76,058 | (1,602,005) | (1,410,864) | (731,185) | (256,997) |
| Income Before Income Taxes | 516,892 | 253,507 | 311,011 | 3,507,218 | 339,150 | 170,555 | 77,532 | 3,804,539 |
| Income Taxes | (194,686) | (97,383) | (123,202) | (1,336,026) | (129,488) | (65,309) | 3,361 | (1,402,201) |
| Net Income (loss) | 322,206 | 156,124 | 187,809 | 2,171,192 | 209,662 | 105,246 | 80,893 | 2,402,338 |
| Per Share Information: | | | | | | | | |
| Basic Income Per Share | \$ 0.06 | \$ 0.03 | \$ 0.03 | \$ 0.38 | \$ 0.04 | \$ 0.02 | \$ 0.01 | \$ 0.41 |
| Net Income (loss) | \$ 0.06 | \$ 0.03 | \$ 0.03 | \$ 0.38 | \$ 0.04 | \$ 0.02 | \$ 0.01 | \$ 0.41 |
| Diluted Income Per Share | | | | | | | | |
| Net Income (loss) | \$ 0.06 | \$ 0.03 | \$ 0.03 | \$ 0.38 | \$ 0.04 | \$ 0.02 | \$ 0.01 | \$ 0.41 |

[THIS PAGE INTENTIONALLY LEFT BLANK]

BOARD OF DIRECTORS

John C. Adams, Jr. (1)(2)

Retired Executive Vice President
of Brown & Brown, Inc.
(an insurance agency)

John J. Allen (2)

President of Allen Land Group, Inc.
(a commercial real estate brokerage company)

William H. Davison (1)(3)

Retired President and Chief Executive Officer of
SunTrust Bank, East Central Florida

Gerald L. DeGood (2)

Consultant

Jeffry B. Fuqua (3)

President of Amick Construction Co., Inc.
(a highway, heavy construction, and land
development company)

Allen C. Harper (1)(3)

Chairman, CEO, and Owner of American
Heritage Railways

William H. McMunn

President and Chief Executive
Officer of the Company

William L. Olivari (1)(2)

Certified Public Accountant and Partner of Olivari
and Associates

Linda Loomis Shelley (3)

Attorney and Shareholder with Fowler White Boggs PA

William J. Voges

Chairman of the Board of the Company; President,
Chief Executive Officer, and General Counsel of The Root
Organization (a private investment company with
diversified holdings)

(1) Member of the Compensation and Stock Option Committee

(2) Member of the Audit Committee

(3) Member of the Governance Committee

OFFICERS

William H. McMunn*

President and Chief Executive Officer

Linda Crisp

Vice President and Corporate Secretary

Bruce W. Teeters*

Senior Vice President-Finance and Treasurer

Gary Moothart

Vice President and Controller

* Executive Officers

INFORMATION

Counsel

Holland & Knight LLP
200 South Orange Avenue, Suite 2600
Orlando, FL 32801

Auditors

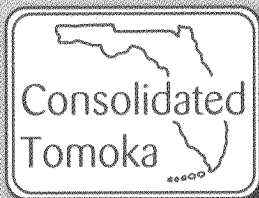
KPMG LLP
One Independent Drive
Jacksonville, FL 32202

Registrar and Stock Transfer Agent

Registrar and Transfer Company
10 Commerce Drive
Cranford, NJ 07016-3752

Mailing Address

Consolidated-Tomoka Land Co.
P.O. Box 10809
Daytona Beach, FL 32120-0809
www.ctlc.com



1530 Cornerstone Boulevard, Suite 100
P.O. Box 10809 (32120) • Daytona Beach 32117
Tel: 386-274-2202 • Fax: 386-274-1223
www.ctlc.com • NYSE Amex Symbol: CTO