

ING VUL-CV
A FLEXIBLE PREMIUM VARIABLE UNIVERSAL LIFE INSURANCE POLICY
 issued by
Security Life of Denver Insurance Company and its Security Life Separate Account L1

<p>The Policy</p> <ul style="list-style-type: none"> • Is issued by Security Life of Denver Insurance Company. • Is returnable by you during the free look period if you are not satisfied. <p>Premium Payments</p> <ul style="list-style-type: none"> • Are flexible, so the premium amount and frequency may vary. • Are allocated to the variable account and the fixed account, based on your instructions. • Are subject to specified fees and charges. <p>The Policy Value</p> <ul style="list-style-type: none"> • Is the sum of your holdings in the fixed account, the variable account and the loan account. • Has no guaranteed minimum value under the variable account. The value varies with the value of the subaccounts you select. • Has a minimum guaranteed rate of return for amounts in the fixed account. • Is subject to specified fees and charges including possible surrender charges. <p>Death Benefit Proceeds</p> <ul style="list-style-type: none"> • Are paid if your policy is in force when the insured person dies. • Are calculated under your choice of options: <ul style="list-style-type: none"> ▷ Option 1 – the base death benefit is the greater of the amount of base insurance coverage you have selected or your policy value multiplied by the appropriate factor from the definition of life insurance factors described in Appendix A; ▷ Option 2 – the base death benefit is the greater of the amount of base insurance coverage you have selected plus the policy value or your policy value multiplied by the appropriate factor from the definition of life insurance factors described in Appendix A; or ▷ Option 3 – the base death benefit is the greater of the amount of base insurance coverage you have selected plus premiums paid minus withdrawals taken or your policy value multiplied by the appropriate factor from the definition of life insurance factors described in Appendix A. • Are equal to the base death benefit plus any rider benefits minus any outstanding loan and accrued loan interest, accelerated benefit lien and accrued lien interest and unpaid fees and charges. • Are generally not subject to federal income tax if your policy continues to meet the federal income tax definition of life insurance. <p>Sales Compensation</p> <ul style="list-style-type: none"> • We pay compensation to broker/dealers whose registered representatives sell the policy. See <i>Distribution of the Policy</i>, page 82, for further information about the amount of compensation we pay. 	<p>Fund Managers</p> <p>Funds managed by the following investment managers are available through the policy:</p> <ul style="list-style-type: none"> • AllianceBernstein, L.P. • BAMCO, Inc. • BlackRock Investment Management, LLC • Capital Research and Management Company • Columbia Management Advisors, LLC • Evergreen Investment Management Company, LLC. • Fidelity Management & Research Co. • Ibbotson Associates • ING Clarion Real Estate Securities L.P. • ING Investment Management Advisors, B.V. • ING Investment Management Co. • J.P. Morgan Investment Management Inc. • Julius Baer Investment Management, LLC • Legg Mason Capital Management, Inc. • Marsico Capital Management, LLC • Massachusetts Financial Services Company • Morgan Stanley Investment Management, Inc. (d/b/a Van Kampen) • Neuberger Berman, LLC • Neuberger Berman Management Inc. • OppenheimerFunds, Inc. • Pacific Investment Management Company LLC • Pioneer Investment Management, Inc. • T. Rowe Price Associates, Inc. • UBS Global Asset Management (Americas) Inc. • Wells Capital Management, Inc.
---	---

This prospectus describes what you should know before purchasing the ING VUL-CV variable universal life insurance policy. Please read it carefully and keep it for future reference.

Neither the Securities and Exchange Commission (“SEC”) nor any state securities commission has approved or disapproved of these securities or determined if this prospectus is accurate or complete. Any representation to the contrary is a criminal offense.

The policy described in this prospectus is not a deposit with, obligation of or guaranteed or endorsed by any bank, nor is it insured or guaranteed by the FDIC, the Federal Reserve Board or any other government agency.

The date of this prospectus is February 6, 2008.

TABLE OF CONTENTS

	Page		Page
POLICY SUMMARY	3	Special Features and Benefits	56
The Policy’s Features and Benefits	3	Termination of Coverage	65
Factors You Should Consider Befor		TAX CONSIDERATIONS	67
Purchasing a Policy	6	Tax Status of the Company	68
Fees and Charges	8	Tax Status of the Policy	68
THE COMPANY, THE VARIABLE		Diversification and Investor Control Requirements ..	69
ACCOUNT AND THE FIXED ACCOUNT	15	Tax Treatment of Policy Death Benefits	69
Security Life of Denver Insurance Company	15	Distributions Other than Death Benefits	70
The Investment Options	17	Other Tax Matters	72
DETAILED INFORMATION ABOUT		ADDITIONAL INFORMATION.....	75
THE POLICY.....	21	General Policy Provisions	75
Underwriting	22	Distribution of the Policy	82
Purchasing a Policy	23	Legal Proceedings	84
Fees and Charges	28	Financial Statements	85
Death Benefits	35	APPENDIX A.....	A-1
Additional Insurance Benefits	42	APPENDIX B.....	B-1
Policy Value	54	MORE INFORMATION IS AVAILABLE	Back Cover

TERMS TO UNDERSTAND

The following is a list of some of the key defined terms and the page number on which each is defined:

	Page Where		Page Where
<u>Term</u>	<u>Defined</u>	<u>Term</u>	<u>Defined</u>
Age	23	Policy Date	23
Fixed Account	3	Policy Value	54
Fixed Account Value	54	Segment or Coverage Segment	36
Loan Account	56	Surrender Value	5
Loan Account Value	56	Target Premium	25
Monthly Processing Date	30	Valuation Date	55
Net Premium	3	Variable Account	3
Net Policy Value	4	Variable Account Value	54

“Security Life,” “we,” “us,” “our” and the “company” refer to Security Life of Denver Insurance Company. “You” and “your” refer to the policy owner. The policy owner is the individual, entity, partnership, representative or party who may exercise all rights over the policy and receive the policy benefits during the insured person’s lifetime.

State Variations – State variations are covered in a special policy form used in that state. This prospectus provides a general description of the policy. Your actual policy and any riders are the controlling documents. If you would like to review a copy of the policy and riders, contact our Customer Service Center or your agent/registered representative.

You may contact us about the policy at our: **ING Customer Service Center**
P.O. Box 5065
Minot, ND 58702-5065
1-877-253-5050
www.ingservicecenter.com

POLICY SUMMARY

This summary highlights the features and benefits of the policy, the risks that you should consider before purchasing a policy and the fees and charges associated with the policy and its benefits. More detailed information is included in the other sections of this prospectus that should be read carefully before you purchase the policy.

The Policy's Features and Benefits

The Policy	<ul style="list-style-type: none">• This prospectus describes our standard ING VUL-CV variable universal life insurance policy. The policy provides death benefits, policy values and other features of traditional life insurance contracts. There may be variations in policy features, benefits and charges because of requirements of the state where we issue your policy. We describe all such differences in your policy.• If you would like to know about state variations, please ask your agent/registered representative. We can provide him/her with the list of variations that will apply to your policy.
Temporary Insurance	<ul style="list-style-type: none">• If you apply and qualify, we may issue temporary insurance equal to the total amount of insurance coverage for which you applied.• The maximum amount of temporary insurance is \$1 million, which includes other in-force coverage you have with us.• Temporary insurance may not be available in all states.
See Temporary Insurance, page 27.	
Premium Payments	<ul style="list-style-type: none">• You choose when to pay and how much to pay.• You will need to pay sufficient premiums to keep the policy in force. Failure to pay sufficient premiums may cause your policy to lapse without value.• You cannot pay additional premiums after age 121.• We may refuse any premium that would disqualify your policy as life insurance under Section 7702 of the Internal Revenue Code or that would cause your policy to become a modified endowment contract.• We deduct a premium expense charge from each premium payment and credit the remaining premium (the “net premium”) to the variable account or the fixed account according to your instructions.
See Premium Payments, page 24.	
Investment Options	<ul style="list-style-type: none">• You may allocate your net premiums to the subaccounts of Security Life Separate Account L1 (the “variable account”) and to our fixed account.• The variable account is one of our separate accounts and consists of subaccounts that invest in corresponding funds. When you allocate premiums to a subaccount, we invest any net premiums in shares of the corresponding fund.• Your variable account value will vary with the investment performance of the funds underlying the subaccounts and the charges we deduct from your variable account value.• The fixed account is part of our general account and consists of all of our assets other than those in our separate accounts (including the variable account) and loan account.• We credit interest of at least 3.00% per year on amounts allocated to the fixed account, and we may, in our sole discretion, credit interest in excess of this amount.
See The Investment Options, page 17.	
Free Look Period	<ul style="list-style-type: none">• During the free look period, you have the right to examine your policy and return it for a refund if you are not satisfied for any reason.• The free look period is generally ten days from your receipt of the policy, although certain states may allow more than ten days. The length of the free look period that applies in your state will be stated in your policy.• Generally, there are two types of free look refunds:<ul style="list-style-type: none">▷ Some states require a return of all premium we have received; and▷ Other states require that we return your policy value plus a refund of all fees and charges deducted. <p>The free look refund that applies in your state will be stated in your policy.</p> <p>See Allocation of Net Premium, page 26, for details about how net premium will be allocated during the free look period.</p>
See Free Look Period, page 26.	

Death Benefits

See *Death Benefits*,
page 35.

- Death benefits are paid if your policy is in force when the insured person dies.
- Until age 121, the amount of the death benefit will depend on which death benefit option is in effect when the insured person dies.
- There are three death benefit options available under your policy:
 - ▷ Option 1 – the base death benefit is the greater of the amount of base insurance coverage you have selected or your policy value multiplied by the appropriate factor from the definition of life insurance factors described in Appendix A;
 - ▷ Option 2 – the base death benefit is the greater of the amount of base insurance coverage you have selected plus your policy value or your policy value multiplied by the appropriate factor from the definition of life insurance factors described in Appendix A; or
 - ▷ Option 3 – the base death benefit is the greater of the amount of base insurance coverage you have selected plus premiums paid minus withdrawals taken or your policy value multiplied by the appropriate factor from the definition of life insurance factors described in Appendix A.
- After age 121, death benefit Option 1 will apply to all policies and the amount of base insurance coverage selected will equal the amount of base insurance coverage in effect on the policy anniversary nearest the insured person’s 121st birthday plus the amount of coverage, if any, under the Adjustable Term Insurance Rider on that date.
- We reduce the death benefit proceeds payable under any death benefit option by any outstanding loan and accrued loan interest, accelerated benefit lien and accrued lien interest and unpaid fees and charges.
- The death benefit is generally not subject to federal income tax if your policy continues to meet the federal income tax definition of life insurance.

Death Benefit Guarantees

See *Death Benefit Guarantees*, page 41.

- Your policy will not lapse as long as your policy value minus any loan account value and accrued loan interest (the “net policy value”) is enough to pay the periodic fees and charges when due.
- Even if your net policy value is not enough to pay the periodic fees and charges, when due, the policy has two optional death benefit guarantee riders that can keep your policy from lapsing:
 - ▷ For issue ages 25-75, the 20-Year/Age 65 Death Benefit Guarantee Rider is an optional rider benefit that may be available, but only when you apply for the policy. If you select this rider, your policy and any Adjustable Term Insurance Rider coverage is guaranteed not to lapse for the greater of 20 years or to age 65 provided:
 - Your cumulative premium payments minus any partial withdrawals and any outstanding loan amount and accrued loan interest are at least equal to the sum of the 20-Year/Age 65 death benefit guarantee premium payments to the next monthly processing date; and
 - Your net policy value meets certain diversification requirements.
 - ▷ For issue ages 25-75, the Lifetime Death Benefit Guarantee Rider is an optional rider benefit that may be available, but only when you apply for the policy. If you select this rider, your policy and any Adjustable Term Insurance Rider coverage is guaranteed not to lapse for the lifetime of the insured person provided:
 - Your cumulative premium payments minus any partial withdrawals and any outstanding loan amount and accrued loan interest are at least equal to the sum of the lifetime death benefit guarantee premium payments to the next monthly processing date; and
 - Your net policy value meets certain diversification requirements.
- There is a separate monthly charge for each of these riders.
- The death benefit guarantee riders are subject to state approval and may not be available in some states.

Rider Benefits

See *Additional Insurance Benefits*,
page 42.

- Your policy may include additional insurance benefits, attached by rider. There are two types of rider benefits:
 - ▷ Optional rider benefits that you must select before they are added to your policy; and
 - ▷ Rider benefits that automatically come with your policy.
- In many cases, we deduct an additional monthly charge for these benefits.
- Not all riders may be available under your policy or in your state.

Transfers

See *Transfers*, page 58.

- You currently may make an unlimited number of transfers between the subaccounts and to the fixed account. Transfers are, however, subject to limits, conditions and restrictions that we or the funds whose shares are involved may impose. See **Limits on Frequent or Disruptive Transfers**, page 60.
- There are certain restrictions on transfers from the fixed account.
- We do not charge for transfers.

Asset Allocation Programs	<ul style="list-style-type: none"> • Dollar cost averaging is a systematic program of transferring policy values to selected subaccounts of the variable account. It is intended to help reduce the risk of investing too much when the price of a fund's shares is high. It also helps to reduce the risk of investing too little when the price of a fund's shares is low. • Automatic rebalancing is a systematic program through which your variable and fixed account values are periodically reallocated among your selected investment options to maintain the allocation percentages you have chosen. • There is no charge to participate in these asset allocation programs. There are, however, certain conditions on participation in these asset allocation programs. • Neither of these asset allocation programs assures a profit nor do they protect you against a loss in a declining market.
See Dollar Cost Averaging, page 58.	
See Automatic Rebalancing, page 59.	
Loans	<ul style="list-style-type: none"> • After the first policy month, you may take loans against your policy's surrender value. • A loan must be at least \$100 and is generally limited to your surrender value less the periodic fees and charges to your next policy anniversary (or periodic fees and charges for the next 13 months if you take a loan within the 30-day period before your next policy anniversary). • When you take a loan we transfer an amount equal to your loan to the loan account as collateral for your loan. The loan account is part of our general account. • We credit amounts held in the loan account with interest at an annual rate no less than 3.00%. • We also charge interest on loans. Interest is due in arrears on each policy anniversary and accrues daily at an annual rate of 3.75% in policy years one through five and at an annual rate of 3.00% (guaranteed not to exceed 3.15%) in all years thereafter. • Loans reduce your policy's death benefit proceeds and may cause your policy to lapse. • Loans may have tax consequences, and you should consult with a qualified tax adviser before taking a loan against your policy's surrender value.
See Loans, page 56.	
Partial Withdrawals	<ul style="list-style-type: none"> • After the first policy year, you may take up to 12 partial withdrawals each policy year. In certain circumstances you may take partial withdrawals during the first policy year. • A partial withdrawal must be at least \$100 and may not exceed the amount which leaves your surrender value less than \$500. • We charge a fee of \$10 for each partial withdrawal. • Partial withdrawals may reduce the amount of base and total insurance coverage under your policy and will reduce your policy value. • Partial withdrawals may also have tax consequences, and you should consult with a qualified tax adviser before taking a partial withdrawal from your policy.
See Partial Withdrawals, page 64.	
Surrenders	<ul style="list-style-type: none"> • You may surrender your policy for its surrender value at any time after the free look period while the insured person is alive. • Your surrender value is your policy value minus any surrender charge and your outstanding loan amount and accrued loan interest. • Surrender charges apply for the first ten years of each segment of base insurance coverage. The surrender charge rates shown are for the first through third segment years. Surrender charge rates generally decline beginning in the fourth segment year and reach zero beginning in the eleventh segment year. • Surrender charge rates vary by the insured person's age at the time each base insurance coverage segment is established and gender. • All insurance coverage ends on the date we receive your surrender request in good order. • If you surrender your policy it cannot be reinstated. • Surrendering the policy may have tax consequences, and you should consult with a qualified tax adviser before surrendering your policy.
See Surrender, page 65.	

Reinstatement

See *Reinstatement*,
page 67.

- You may reinstate your policy and riders (other than the death benefit guarantee riders or Guaranteed Minimum Accumulation Benefit Rider) within five years of lapse if you still own the policy and did not surrender it and the insured person is still insurable.
 - You will need to pay the required reinstatement premium.
 - If you had an outstanding loan when coverage lapsed, we will reinstate it with accrued loan interest to the date of the lapse unless directed otherwise.
 - When we reinstate your policy, we reinstate the surrender charges for the amount and time remaining when your policy lapsed.
 - A policy that is reinstated more than 90 days after lapsing may be considered a modified endowment contract for tax purposes.
 - Reinstating your policy may have tax consequences, and you should consult with a qualified tax adviser before reinstating your policy.
-

Factors You Should Consider Before Purchasing a Policy

The decision to purchase a policy should be discussed with your agent/registered representative. Make sure you understand the policy's investment options, its other features and benefits, its risks and the fees and charges you will incur when you consider purchasing the policy and investing in the subaccounts of the variable account.

Life Insurance Coverage

- The policy is not a short-term savings vehicle and should be purchased only if you need life insurance coverage. Evaluate your need for life insurance coverage before purchasing a policy.
 - You should purchase a policy only if you intend and have the financial capability to keep the policy in force for a substantial period of time.
-

Fees and Charges

See *Fees and Charges*,
page 28.

- In the early policy years the surrender charge may exceed the policy value because the surrender charge may be more than the cumulative premiums minus policy fees and charges. Therefore, you should purchase a policy only if you intend and have the financial capability to keep the policy in force for a substantial period of time.
 - The policy's fees and charges reflect the costs associated with its features and benefits, the services we render, the expenses we expect to incur and the risks we assume under the policy.
 - We believe that the policy's fees and charges, in the aggregate, are reasonable, but before purchasing a policy you should compare the value that the policy's various features and benefits and the available services have to you, given your particular circumstances, with the fees and charges associated with those features, benefits and services.
-

Lapse

See *Lapse*, page 66.

- Your policy may lapse and your insurance coverage under the policy may terminate if on any monthly processing date:
 - ▷ A death benefit guarantee is not in effect; and
 - ▷ Your net policy value is not enough to pay the periodic fees and charges when due.
 - If you meet these conditions, we will send you notice and give you a 61 day grace period to make a sufficient premium payment.
 - If you do not make a sufficient premium payment by the end of the 61 day grace period, your life insurance coverage will terminate and your policy will lapse without value.
 - Partial withdrawals and loans have an adverse impact on your net policy value. Before taking a partial withdrawal or loan consider its effect on your ability to keep your policy from lapsing.
-

Exchanges

See *Purchasing a Policy*, page 23.

- Replacing an existing life insurance policy(ies) and/or annuity contract(s) with the policy described in this prospectus may not be beneficial to you.
 - Before purchasing a policy, determine whether your existing policy(ies) and/or contract(s) will be subject to fees or penalties upon surrender or cancellation.
 - Also compare the fees, charges, coverage provisions and limitations, if any, of your existing policy(ies) and/or contract(s) with those of the policy described in this prospectus.
-

Investment Risk

See *The Variable Account*, page 17.

- You should evaluate the policy's long-term investment potential and risks before purchasing a policy.
- For amounts you allocate to the subaccounts of the variable account:
 - ▷ Your values will fluctuate with the markets, interest rates and the performance of the underlying funds;
 - ▷ You assume the risk that your values may decline or may not perform to your expectations;
 - ▷ Your policy could lapse without value or you may be required to pay additional premium because of poor fund performance;
 - ▷ Each fund has various investment risks, and some funds are riskier than others;
 - ▷ You should read each fund's prospectus and understand the risks associated with the fund before allocating your premiums to its corresponding subaccount; and
 - ▷ There is no assurance that any fund will achieve its stated investment objective.
- For amounts you allocate to the fixed account:
 - ▷ Interest rates we declare will change over time; and
 - ▷ You assume the risk that interest rates may decline, although never below the guaranteed minimum annual rate of 3.00%.

Taxation

See *TAX CONSIDERATIONS*, page 67.

- Under current federal income tax law, death benefits of life insurance policies generally are not subject to income tax. In order for this treatment to apply, the policy must qualify as a life insurance contract. We believe it is reasonable to conclude that the policy will qualify as a life insurance contract.
- Assuming the policy qualifies as a life insurance contract under current federal income tax law, your policy earnings are generally not subject to income tax as long as they remain within your policy. Depending on your circumstances, however, the following events may have tax consequences for you:
 - ▷ Reduction in the amount of your insurance coverage;
 - ▷ Partial withdrawals;
 - ▷ Loans;
 - ▷ Surrender;
 - ▷ Lapse; and
 - ▷ Reinstatement.
- In addition, if your policy is a modified endowment contract, a partial withdrawal, surrender or a loan against or secured by the policy will be taxable to you to the extent of any gain in the policy. A penalty tax may be imposed on a distribution from a modified endowment contract as well.
- There is always the possibility that the tax treatment of the policy could be changed by legislation or otherwise. You should consult a qualified tax adviser with respect to legislative developments and their effect on the policy.
- **Consult with a qualified legal or tax adviser before you purchase a policy.**

Sales**Compensation**

See *Distribution of the Policy*, page 82.

- We pay compensation to broker/dealers whose registered representatives sell the policy.
- Broker/dealers may be able to choose to receive their compensation under various payment options, but their choice will not affect the fees and charges you will pay for the policy.
- We generally pay more compensation on premiums paid for base insurance coverage than we do on premiums paid for coverage under the Adjustable Term Insurance Rider. Talk to your agent/registered representative about the right blend of base coverage and Adjustable Term Insurance Rider coverage for you.

Other Products

- We and our affiliates offer other insurance products that may have different features, benefits, fees and charges. These other products may better match your needs.
 - Contact your agent/registered representative if you would like information about these other products.
-

Fees and Charges

The following tables describe the fees and charges you will pay when buying, owning and surrendering the policy.

Transaction Fees and Charges. The following table describes the fees and charges deducted at the time you make a premium payment, take a partial withdrawal, surrender your policy, request an excess illustration or exercise the Accelerated Benefit Rider or Overloan Lapse Protection Rider benefit. **See Transaction Fees and Charges, page 28.**

Charge	When Deducted	Amount Deducted
Premium Expense Charge	<ul style="list-style-type: none"> • Deducted when you make a premium payment. 	<ul style="list-style-type: none"> • 9.00% of premium up to target premium and 6.00% of premium in excess of target premium in segment year 1, and lower thereafter.
Partial Withdrawal Fee	<ul style="list-style-type: none"> • Deducted when you take a partial withdrawal. 	<ul style="list-style-type: none"> • \$10.
Surrender Charge ¹	<ul style="list-style-type: none"> • Deducted during the first ten segment years when you surrender your policy, decrease your base insurance coverage, take a partial withdrawal which decreases your base insurance coverage or allow your policy to lapse. 	<ul style="list-style-type: none"> • Minimum Rates per \$1,000 of base insurance coverage – <ul style="list-style-type: none"> ▷ \$3.40. • Maximum Rates per \$1,000 of base insurance coverage – <ul style="list-style-type: none"> ▷ \$42.00. • Rates for a representative insured person per \$1,000 of base insurance coverage – <ul style="list-style-type: none"> ▷ \$23.00. ▷ The representative insured person is a male age 45.
Excess Illustration Fee	<ul style="list-style-type: none"> • Deducted each time you request an illustration after the first each policy year. 	<ul style="list-style-type: none"> • \$25 – maximum. • \$0 – current.
Accelerated Benefit Rider Administrative Charge	<ul style="list-style-type: none"> • On the date the acceleration request is processed. 	<ul style="list-style-type: none"> • \$300 per acceleration request.
Overloan Lapse Protection Rider Charge	<ul style="list-style-type: none"> • On the monthly processing date on or next following the date we receive your request to exercise this rider's benefit. 	<ul style="list-style-type: none"> • 3.50% of the policy value.²

¹ The surrender charge rates shown are for the first through third segment years. Surrender charge rates generally decline beginning in the fourth segment year and reach zero beginning in the 11th segment year. The rates that apply to you vary by the insured person's age at the time each base insurance coverage segment is established and gender. The rates for the representative insured person listed above may be more or less than you will pay, and you should contact your agent/registered representative for information about the rates that apply to you.

² Your policy value is the sum of your holdings in the fixed account, the variable account and the loan account.

Periodic Fees and Charges. The following table describes the fees and charges deducted each month on the monthly processing date, not including fund fees and expenses. **See Periodic Fees and Charges, page 30.**

Charge	When Deducted	Amount Deducted
Cost of Insurance Charge ³	<ul style="list-style-type: none"> On the monthly processing date. 	<ul style="list-style-type: none"> Minimum Rates per \$1,000 of base insurance coverage – <ul style="list-style-type: none"> ▷ \$0.02 – guaranteed. ▷ \$0.01 – current. Maximum Rates per \$1,000 of base insurance coverage – <ul style="list-style-type: none"> ▷ \$83.33 – guaranteed and current. Rates for a representative insured person per \$1,000 of base insurance coverage – <ul style="list-style-type: none"> ▷ \$0.22 – guaranteed. ▷ \$0.08 – current. ▷ The representative insured person is a male, age 45 in the preferred no tobacco risk class and fully underwritten.
Mortality & Expense Risk Charge ⁴	<ul style="list-style-type: none"> On the monthly processing date. 	<ul style="list-style-type: none"> Percentage of policy value invested in the variable account – <ul style="list-style-type: none"> ▷ 0.025% (0.30% on an annual basis) – guaranteed. ▷ 0.00% – current.
Policy Charge ⁵	<ul style="list-style-type: none"> On the monthly processing date. 	<ul style="list-style-type: none"> \$30 per month in all policy years – guaranteed. \$30 per month in policy years 1–5 and lower thereafter – current.
Administrative Charge ⁶	<ul style="list-style-type: none"> On the monthly processing date. 	<ul style="list-style-type: none"> Minimum Rates per \$1,000 of base insurance coverage – <ul style="list-style-type: none"> ▷ \$0.03. Maximum Rates per \$1,000 of base insurance coverage – <ul style="list-style-type: none"> ▷ \$3.85. Rates for a representative insured person per \$1,000 of base insurance coverage – <ul style="list-style-type: none"> ▷ \$0.24. ▷ The representative insured person is male, age 45 in the preferred no tobacco risk class and fully underwritten.
Loan Interest Charge	<ul style="list-style-type: none"> Accrues daily but is due in arrears on each policy anniversary. 	<ul style="list-style-type: none"> 3.75% per annum of the amount held in the loan account in policy years 1–5, and lower thereafter.

³ The minimum and maximum rates shown are for a fully underwritten policy for an insured person in the standard risk class. The rates have been rounded to the nearest penny. Consequently, the actual rates are either more or less than these rounded rates. The rates that apply to you depend on the insured person's age, gender, policy duration, underwriting type and risk class and generally increase each year after the first segment year. Different cost of insurance rates will apply to each segment of base insurance coverage. A segment or coverage segment is a block of insurance coverage. The rates for the representative insured person listed above are for the first policy year and may be more or less than you will pay, and you should contact your agent/registered representative for information about the rates that apply to you. The guaranteed maximum cost of insurance rates for an insured person in the substandard risk class is \$83.33 per \$1,000 of base insurance coverage.

⁴ The monthly mortality and expense risk charge rate has been rounded to the nearest one hundredth of one percent. Consequently, the actual rates are either more or less than these rounded rates. **See Mortality and Expense Risk Charge, page 31, for the monthly rate without rounding.**

⁵ The policy charge varies based on the amount of base insurance coverage and underwriting type. The current Policy Charge also varies based on policy duration. The current monthly Policy Charge shown is for fully underwritten policies with at least \$100,000 in base insurance coverage. It remains level for the first five policy years and decreases thereafter. For regular guaranteed issue policies with at least \$100,000 in base insurance coverage, the current Policy Charge is \$30 per month during the first ten policy years and decreases thereafter. For select guaranteed or simplified issue policies with at least \$100,000 in base insurance coverage, the current Policy Charge is \$30 per month during the first five policy years and decreases thereafter. **See Policy Charge, page 31, for more detail about the policy charge rates.**

⁶ The minimum and maximum rates shown are for a fully underwritten policy for an insured person in the standard risk class. The administrative charge rates shown are for the first policy year. The rates that apply to you depend on the insured person's age, gender, underwriting type and risk class and generally decrease each year after the fifth segment year. The rates shown have been rounded to the nearest penny. Consequently, the actual rates are either more or less than these rounded rates. The rates for the representative insured person listed above are for the first policy year and may be more or less than you will pay and you should contact your agent/registered representative for information about the rates that apply to you.

Optional Rider Fees and Charges. The following tables describe the charges deducted each month on the monthly processing date for each of the optional rider benefits. **See Optional Rider Fees and Charges, page 32.**

20-Year/Age 65 Death Benefit Guarantee Rider

Charge	When Deducted	Amount Deducted
20-Year/Age 65 Death Benefit Guarantee Rider Charge ⁷	<ul style="list-style-type: none"> Deducted on each monthly processing date during the guarantee period. 	<ul style="list-style-type: none"> Minimum Rates per \$1,000 of guaranteed coverage – <ul style="list-style-type: none"> ▷ \$0.01. Maximum Rates per \$1,000 of guaranteed coverage – <ul style="list-style-type: none"> ▷ \$0.02. Rates for a representative insured person per \$1,000 of guaranteed coverage – <ul style="list-style-type: none"> ▷ \$0.01. ▷ The representative insured person is age 45.

Additional Insured Rider

Charge	When Deducted	Amount Deducted
Additional Insured Rider Charge ⁸	<ul style="list-style-type: none"> Deducted on each monthly processing date. 	<ul style="list-style-type: none"> Minimum Rates per \$1,000 of rider benefit – <ul style="list-style-type: none"> ▷ \$0.02 – guaranteed. ▷ \$0.01 – current. Maximum Rates per \$1,000 of rider benefit – <ul style="list-style-type: none"> ▷ \$17.84 – guaranteed. ▷ \$16.52 – current. Rates for a representative insured person per \$1,000 of rider benefit – <ul style="list-style-type: none"> ▷ \$0.14 – guaranteed. ▷ \$0.14 – current. ▷ The representative insured person is female age 45 in the preferred no tobacco risk class and fully underwritten.

⁷ The rates for this guarantee depends on the insured person's age at issue. The minimum rate and the representative rate for the 20-year/Age 65 Death Benefit Guarantee Rider have been rounded up to the nearest penny, and the actual rates may be less than these rounded rates. The other rates stated have been rounded to the nearest penny, consequently, the actual rates may be more or less than these rounded rates. The rates for the representative insured person listed above may be more or less than you will pay, and you should contact your agent/registered representative for information about the rates that apply to you.

⁸ The minimum and maximum rates shown are for an additional insured person in the standard risk class. The rates have been rounded to the nearest penny. Consequently, the actual rates are either more or less than these rounded rates. The rates that apply to you depend on the additional insured person's age, gender, underwriting type and risk class and generally increase with age. The rates for the representative additional insured person listed above are for the first policy year and may be more or less than you will pay, and you should contact your agent/registered representative for information about the rates that apply to you. The guaranteed maximum cost of insurance rates for an additional insured person in the substandard risk class is \$89.20 per \$1,000 of rider coverage.

Optional Rider Fees and Charges, *continued.*

Adjustable Term Insurance Rider

Charge	When Deducted	Amount Deducted
Adjustable Term Insurance Rider Cost of Insurance Charge ⁹	<ul style="list-style-type: none"> On the monthly processing date. 	<ul style="list-style-type: none"> Minimum Rates per \$1,000 of rider benefit – <ul style="list-style-type: none"> ▷ \$0.02 – guaranteed. ▷ \$0.01 – current. Maximum Rates per \$1,000 of rider benefit – <ul style="list-style-type: none"> ▷ \$83.33 – guaranteed and current. Rates for a representative insured person per \$1,000 of rider benefit – <ul style="list-style-type: none"> ▷ \$0.28 – guaranteed. ▷ \$0.05 – current. ▷ The representative insured person is a male age 45 in the preferred no tobacco risk class and fully underwritten.
Adjustable Term Insurance Rider Administrative Charge ¹⁰	<ul style="list-style-type: none"> On the monthly processing date. 	<ul style="list-style-type: none"> Minimum Rates per \$1,000 of the difference between base coverage and total coverage – <ul style="list-style-type: none"> ▷ \$0.01. Maximum Rates per \$1,000 of the difference between base coverage and total coverage – <ul style="list-style-type: none"> ▷ \$2.73. Rates for a representative insured person per \$1,000 of the difference between base coverage and total coverage – <ul style="list-style-type: none"> ▷ \$0.15. ▷ The representative insured person is a male age 45 in the preferred no tobacco risk class and fully underwritten.

Guaranteed Minimum Accumulation Benefit Rider

Charge	When Deducted	Amount Deducted
Guaranteed Minimum Accumulation Benefit Rider Charge	<ul style="list-style-type: none"> Deducted on each monthly processing date during the guarantee period. 	<ul style="list-style-type: none"> 0.10% (1.15% on an annual basis) of the minimum accumulation value.¹¹

⁹ The minimum and maximum rates shown are for a fully underwritten policy for an insured person in the standard risk class. The rates have been rounded to the nearest penny. Consequently, the actual rates are either more or less than these rounded rates. The rates that apply to you depend on the insured person's age, gender, policy duration, underwriting type and risk class and generally increase each year after the first segment year. The rates for the representative insured person listed above are for the first policy year and may be more or less than you will pay, and you should contact your agent/registered representative for information about the rates that apply to you. The guaranteed maximum cost of insurance rates for an insured person in the substandard risk class is \$83.33 per \$1,000 of rider coverage.

¹⁰ The minimum and maximum rates shown are for a fully underwritten policy for an insured person in the standard risk class. The rates shown are for the first policy year. The rates that apply to you depend on the insured person's gender, underwriting type and risk class and generally decrease after the fifth segment year. The rates shown have been rounded to the nearest penny. Consequently, the actual rates are either more or less than these rounded rates. The rates for the representative insured person listed above are for the first policy year and may be more or less than you will pay and you should contact your agent/registered representative for information about the rates that apply to you.

¹¹ The minimum accumulation value equals the sum of all premium payments we have received for the policy and attached riders minus all partial withdrawals and all fees and charges deducted from your policy value (or that may have been waived under the provisions of the policy or another rider), with the result accrued at an annual interest rate that may vary by policy year. The monthly percentage shown has been rounded up to the nearest tenth of one percent and the actual percentage charged is lower than this rounded amount. See **Guaranteed Minimum Accumulation Benefit Rider, page 48, for more detail about the features and benefits of and charge for this rider, (including the unrounded monthly amount of the charge).**

Optional Rider Fees and Charges, *continued.*

Lifetime Death Benefit Guarantee Rider

Charge	When Deducted	Amount Deducted
Lifetime Death Benefit Guarantee Rider Charge ¹²	<ul style="list-style-type: none"> • Deducted on each monthly processing date during the guarantee period. 	<ul style="list-style-type: none"> • Minimum Rates per \$1,000 of guaranteed coverage – <ul style="list-style-type: none"> ▷ \$0.02. • Maximum Rates per \$1,000 of guaranteed coverage – <ul style="list-style-type: none"> ▷ \$0.06. • Rates for a representative insured person per \$1,000 of guaranteed coverage – <ul style="list-style-type: none"> ▷ \$0.02. ▷ The representative insured person is age 45.

Waiver of Cost of Insurance Rider

Charge	When Deducted	Amount Deducted
Waiver of Cost of Insurance Rider Charge ¹³	<ul style="list-style-type: none"> • Deducted on each monthly processing date. 	<ul style="list-style-type: none"> • Minimum Rates per \$100 of rider coverage – <ul style="list-style-type: none"> ▷ \$3.82. • Maximum Rates per \$100 of rider coverage – <ul style="list-style-type: none"> ▷ \$19.48. • Rates for a representative insured person per \$100 of rider coverage – <ul style="list-style-type: none"> ▷ \$8.43. ▷ The representative insured person is age 45.

Waiver of Specified Premium Rider

Charge	When Deducted	Amount Deducted
Waiver of Specified Premium Rider Charge ¹³	<ul style="list-style-type: none"> • Deducted on each monthly processing date. 	<ul style="list-style-type: none"> • Minimum Rates per \$100 of rider coverage – <ul style="list-style-type: none"> ▷ \$1.70. • Maximum Rates per \$100 of rider coverage – <ul style="list-style-type: none"> ▷ \$25.40. • Rates for a representative insured person per \$100 of rider coverage – <ul style="list-style-type: none"> ▷ \$3.90. ▷ The representative insured person is a male age 45 and fully underwritten.

¹² The rates for this guarantee depends on the insured person’s age at issue. The rates for the Lifetime Death Benefit Guarantee Rider have been rounded to the nearest penny, and the actual rates may be more or less than these rounded rates. The rates for the representative insured person listed above may be more or less than you will pay, and you should contact your agent/registered representative for information about the rates that apply to you.

¹³ The rates for a particular rider depend on various factors that may include the insured person’s age, gender, policy duration and/or underwriting type. Rates generally increase each year after the first policy year until age 59 and generally decrease thereafter. The rates for the representative insured person listed above are for the first policy year and may be more or less than you will pay, and you should contact your agent/registered representative for information about the rates that apply to you.

Fund Fees and Expenses. The following table shows the minimum and maximum total gross annual fund expenses that you may pay during the time you own the policy. Fund expenses vary from fund to fund and may change from year to year. **For more detail about a fund’s fees and expenses, review the fund’s prospectus. See also Fund Fees and Expenses, page 33.**

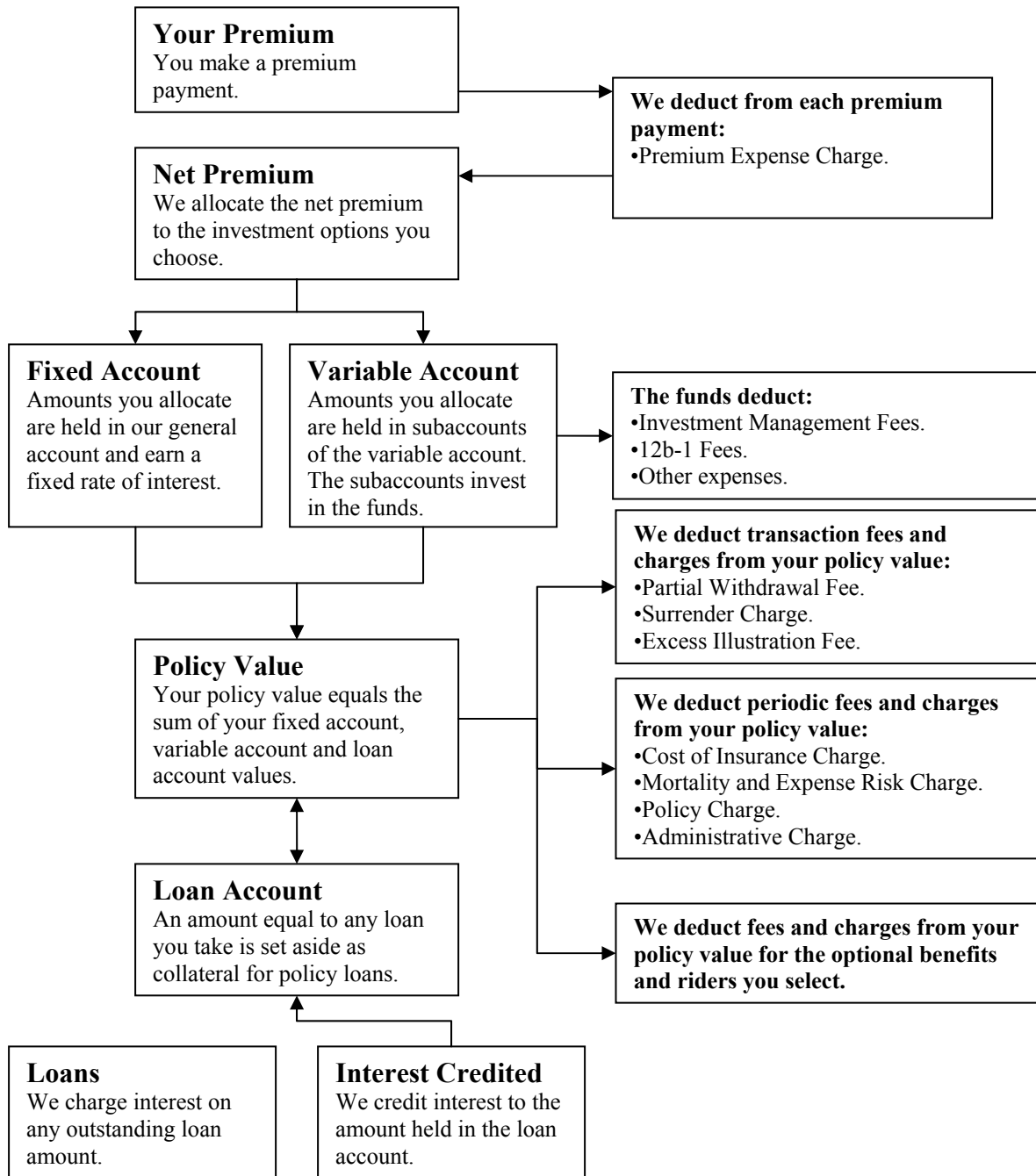
	Minimum	Maximum
Total Gross Annual Fund Expenses ¹⁴ (deducted from fund assets)	0.27%	1.93%

Total gross annual fund expenses are deducted from amounts that are allocated to the fund. They include management fees and other expenses and may include distribution (12b-1) fees. Other expenses may include service fees that may be used to compensate service providers, including the company and its affiliates, for administrative and policy owner services provided on behalf of the fund. Distribution (12b-1) fees are used to finance any activity that is primarily intended to result in the sale of fund shares.

If a fund is structured as a “fund of funds,” total gross annual fund expenses also include the fees associated with the funds in which it invests. Because of this a fund that is structured as a “fund of funds” may have higher fees and expenses than a fund that invests directly in debt and equity securities. **For a list of the “fund of funds” available through the policy, see the chart of funds available through the variable account on page 18.**

¹⁴ Some funds which are available through the policy have contractual arrangements to waive and/or reimburse certain fund fees and expenses. The minimum and maximum total gross annual fund expenses shown above do not reflect any of these waiver and/or reimbursement arrangements.

How the Policy Works



THE COMPANY, THE VARIABLE ACCOUNT AND THE FIXED ACCOUNT

Security Life of Denver Insurance Company

We are a stock life insurance company organized in 1929 and incorporated under the laws of the State of Colorado. We are admitted to do business in the District of Columbia and all states except New York. Our headquarters is at 1290 Broadway, Denver, Colorado 80203-5699.

We are a wholly owned indirect subsidiary of ING Groep N.V., a global financial institution active in the fields of insurance, banking and asset management. ING Groep N.V. is headquartered in Amsterdam, The Netherlands. Although we are an indirect subsidiary of ING Groep N.V., ING Groep N.V. is not responsible for the obligations under the policy. The obligations under the policy are solely the responsibility of Security Life of Denver Insurance Company.

We are also a charter member of the Insurance Marketplace Standards Association (“IMSA”). Companies that belong to IMSA subscribe to a rigorous set of standards that cover the various aspects of sales and service for individually sold life insurance and annuities. IMSA members have adopted policies and procedures that demonstrate a commitment to honesty, fairness and integrity in all customer contacts involving sales and service of individual life insurance and annuity products.

Regulatory Developments – The Company and the Industry

As with many financial services companies, Security Life and its affiliates have received informal and formal requests for information from various state and federal governmental agencies and self-regulatory organizations in connection with inquiries and investigations of the products and practices of the financial services industry. In each case, the company and its affiliates have been and are providing full cooperation.

Insurance and Retirement Plan Products and Other Regulatory Matters

The New York Attorney General (the “NYAG”), other federal and state regulators and self-regulatory agencies are also conducting broad inquiries and investigations involving the insurance and retirement industries. These initiatives currently focus on, among other things, compensation, revenue sharing, and other sales incentives; potential conflicts of interest; potential anti-competitive activity; reinsurance; marketing practices; specific product types (including group annuities and indexed annuities); and disclosure. It is likely that the scope of these industry investigations will further broaden before they conclude. The company and certain of its U.S. affiliates have received formal and informal requests in connection with such investigations, and are cooperating fully with each request. Some of these matters could result in regulatory action involving the company or certain of its U.S. affiliates.

These initiatives also may result in new legislation and regulation that could significantly affect the financial services industry, including businesses in which the company is engaged.

In light of these and other developments, U.S. affiliates of ING, including the company, periodically review whether modifications to their business practices are appropriate.

Investment Product Regulatory Issues. Since 2002, there has been increased governmental and regulatory activity relating to mutual funds and variable insurance products. This activity has primarily focused on inappropriate trading of fund shares; directed brokerage; compensation; sales practices, suitability, and supervision; arrangements with service providers; pricing; compliance and controls; adequacy of disclosure; and document retention.

In addition to responding to governmental and regulatory requests on fund trading issues, ING management, on its own initiative, conducted, through special counsel and a national accounting firm, an extensive internal review of mutual fund trading in ING insurance, retirement, and mutual fund products. The goal of this review was to identify any instances of inappropriate trading in those products by third parties or by ING investment professionals and other ING personnel.

The internal review identified several isolated arrangements allowing third parties to engage in frequent trading of mutual funds within the variable insurance and mutual fund products of certain subsidiaries of ING, and identified other circumstances where frequent trading occurred despite measures taken by ING intended to combat market timing. Each of the arrangements has been terminated and disclosed to regulators, to the independent trustees of ING Funds (U.S.) and in reports previously filed by affiliates of the company with the SEC pursuant to the Securities Exchange Act of 1934, as amended.

Action may be taken by regulators with respect to the company or certain affiliates before investigations relating to fund trading are completed. The potential outcome of such action is difficult to predict but could subject the company or certain affiliates to adverse consequences, including, but not limited to, settlement payments, penalties, and other financial liability. It is not currently anticipated, however, that the actual outcome of any such action will have a material adverse effect on ING or ING's U.S.-based operations, including the company.

ING has agreed to indemnify and hold harmless the ING Funds from all damages resulting from wrongful conduct by ING or the employees of its subsidiaries or from ING's internal investigation, any investigations conducted by any governmental or self-regulatory agencies, litigation or other formal proceedings, including any proceedings by the SEC. Management reported to the ING Funds Board that ING management believes that the total amount of any indemnification obligations will not be material to ING or ING's U.S.-based operations, including the company.

Product Regulation. Our products are subject to a complex and extensive array of state and federal tax, securities and insurance laws, and regulations, which are administered and enforced by a number of governmental and self-regulatory

authorities. Specifically, U.S. federal income tax law imposes certain requirements relating to product design, administration and investments that are conditions for beneficial tax treatment of such products under the Internal Revenue Code. **See TAX CONSIDERATIONS, page 67, for further discussion of some of these requirements.** Failure to administer certain product features could affect such beneficial tax treatment. In addition, state and federal securities and insurance laws impose requirements relating to insurance product design, offering and distribution, and administration. Failure to meet any of these complex tax, securities or insurance requirements could subject the company to administrative penalties, unanticipated remediation or other claims and costs.

The Investment Options

You may allocate your premium payments to any of the available investment options. These options include subaccounts of the variable account and the fixed account. The investment performance of a policy depends on the performance of the investment options you choose.

The Variable Account

We established Security Life Separate Account L1 on November 3, 1993, as one of our separate accounts under the laws of the State of Colorado. It is a unit investment trust, registered with the SEC under the Investment Company Act of 1940, as amended (“1940 Act”).

In the policy the “variable account” is referred to as the “Separate Account.”

We own all of the assets of the variable account and are obligated to pay all amounts due under a policy according to the terms of the policy. Income, gains and losses credited to, or charged against, the variable account reflect the investment experience of the variable account and not the investment experience of our other assets. Additionally, Colorado law provides that we cannot charge the variable account with liabilities arising out of any other business we may conduct. This means that if we ever became insolvent, the variable account assets will be used first to pay variable account policy claims. Only if variable account assets remain after these claims have been satisfied can these assets be used to pay owners of other policies and creditors.

The variable account is divided into subaccounts. Each subaccount invests in a corresponding fund. When you allocate premium payments to a subaccount, you acquire accumulation units of that subaccount. You do not invest directly in or hold shares of the funds when you allocate premium payments to the subaccounts of the variable account.

Funds Available Through the Variable Account. The following chart lists the funds that are available through the variable account. For additional information about each fund’s investment adviser/subadviser and investment objective, see Appendix B to this prospectus. More detailed information about each fund can be found in each fund’s current prospectus.

Certain funds that are available through the variable account are structured as “fund of funds.” These funds may have higher fees and expenses than a fund that invests directly in debt and equity securities because they also incur the fees and expenses of the underlying funds in which they invest. The “fund of funds” available through the policy are identified in the following chart.

Funds Available Through the Variable Account

- | | |
|---|---|
| <ul style="list-style-type: none"> • American Funds – Growth Fund (Class 2) • American Funds – Growth-Income Fund (Class 2) • American Funds – International Fund (Class 2) • Fidelity® VIP Contrafund® Portfolio (Service Class) • Fidelity® VIP Equity-Income Portfolio (Service Class) • ING AllianceBernstein Mid Cap Growth Portfolio (Class I) • ING BlackRock Large Cap Growth Portfolio (Class I) • ING Evergreen Health Sciences Portfolio (Class I) • ING Evergreen Omega Portfolio (Class I) • ING FMRSM Diversified Mid Cap Portfolio (Class I) • ING Global Resources Portfolio (Class I) • ING JPMorgan Emerging Markets Equity Portfolio (Class I) • ING JPMorgan Small Cap Core Equity Portfolio (Class I) • ING JPMorgan Value Opportunities Portfolio (Class I) • ING Julius Baer Foreign Portfolio (Class I) • ING Legg Mason Value Portfolio (Class I) • ING LifeStyle Aggressive Growth Portfolio (Class I)* • ING LifeStyle Growth Portfolio (Class I)* • ING LifeStyle Moderate Growth Portfolio (Class I)* • ING LifeStyle Moderate Portfolio (Class I)* • ING Limited Maturity Bond Portfolio (Class S) • ING Liquid Assets Portfolio (Class S) • ING Marsico Growth Portfolio (Class I) • ING Marsico International Opportunities Portfolio (Class I) • ING MFS Total Return Portfolio (Class I) • ING MFS Utilities Portfolio (Class S) • ING Oppenheimer Main Street Portfolio® (Class I) • ING Pioneer Fund Portfolio (Class I) • ING Pioneer Mid Cap Value Portfolio (Class I) • ING Stock Index Portfolio (Class I) | <ul style="list-style-type: none"> • ING T. Rowe Price Capital Appreciation Portfolio (Class I) • ING T. Rowe Price Equity Income Portfolio (Class I) • ING Van Kampen Capital Growth Portfolio (Class I) • ING Van Kampen Growth and Income Portfolio (Class S) • ING VP Index Plus International Equity Portfolio (Class S) • ING Wells Fargo Small Cap Disciplined Portfolio (Class S) • ING Baron Small Cap Growth Portfolio (I Class) • ING Columbia Small Cap Value II Portfolio (I Class) • ING JP Morgan Mid Cap Value Portfolio (I Class) • ING Neuberger Berman Partners Portfolio (I Class) • ING Oppenheimer Global Portfolio (I Class) • ING Oppenheimer Strategic Income Portfolio (S Class) • ING PIMCO Total Return Portfolio (I Class) • ING T. Rowe Price Diversified Mid Cap Growth Portfolio (I Class) • ING UBS U.S. Large Cap Equity Portfolio (I Class) • ING Van Kampen Comstock Portfolio (I Class) • ING Van Kampen Equity and Income Portfolio (I Class) • ING VP Balanced Portfolio (Class I) • ING VP Intermediate Bond Portfolio (Class I) • ING VP Index Plus LargeCap Portfolio (Class I) • ING VP Index Plus MidCap Portfolio (Class I) • ING VP Index Plus SmallCap Portfolio (Class I) • ING VP High Yield Bond Portfolio (Class I) • ING VP Real Estate Portfolio (Class S) • ING VP SmallCap Opportunities Portfolio (Class I) • Neuberger Berman AMT Socially Responsive Portfolio® (Class I) |
|---|---|

* These funds are structured as “fund of funds.” See the Fund Fees and Expenses table on page 13 and the Fund Fees and Expenses section on page 33 for more information about “fund of funds.”

See Appendix B to this prospectus for more information about the funds available through the variable account, including information about each fund's investment adviser/subadviser and investment objective. More detailed information about each fund, including information about their investment risks and fees and expenses, can be found in the fund's current prospectus and Statement of Additional Information. You may obtain these documents by contacting us at our Customer Service Center.

A fund available through the variable account is not the same as a retail mutual fund with the same or similar name. Accordingly, the management, fees and expenses and performance of a fund available through the variable account is likely to differ from a similarly named retail mutual fund.

Voting Privileges. We invest each subaccount's assets in shares of a corresponding fund. We are the legal owner of the fund shares held in the variable account, and we have the right to vote on certain issues. Among other things, we may vote on issues described in the fund's current prospectus or issues requiring a vote by shareholders under the 1940 Act.

Even though we own the shares, we give you the opportunity to tell us how to vote the number of shares attributable to your policy. We count fractional shares. If you have a voting interest, we send you proxy material and a form on which to give us your voting instructions.

Each fund share has the right to one vote. The votes of all fund shares are cast together on a collective basis, except on issues for which the interests of the funds differ. In these cases, voting is on a fund-by-fund basis.

Examples of issues that require a fund-by-fund vote are changes in the fundamental investment policy of a particular fund or approval of an investment advisory agreement.

We vote the shares in accordance with your instructions at meetings of the fund's shareholders. We vote any fund shares that are not attributable to policies and any fund shares for which the owner does not give us instructions in the same proportion as we vote the shares for which we did receive voting instructions. This means that instructions from a small number of shareholders can determine the outcome of a vote. There is no minimum number of shares for which we must receive instructions before we vote the shares.

We reserve the right to vote fund shares without getting instructions from policy owners if the federal securities laws, regulations or their interpretations change to allow this.

You may instruct us only on matters relating to the funds corresponding to those subaccounts in which you have invested assets as of the record date set by the fund's Board for the shareholders meeting. We determine the number of fund shares in each subaccount of your policy by dividing your variable account value in that subaccount by the net asset value of one share of the matching fund.

Right to Change the Variable Account. Subject to state and federal law and the rules and regulations thereunder, we may, from time to time, make any of the following changes to our variable account with respect to some or all classes of policies:

- Change the investment objective;
- Offer additional subaccounts that will invest in funds we find appropriate for policies we issue;
- Eliminate subaccounts;
- Combine two or more subaccounts;
- Close subaccounts. We will notify you in advance by a supplement to this prospectus if we close a subaccount. If a subaccount is closed or otherwise is unavailable for new investment, unless you provide us with alternative allocation instructions, all future premiums directed to the subaccount that was closed or is unavailable may be automatically allocated among the other available subaccounts according to your most recent allocation instructions. You may give us alternative allocation instructions by contacting our Customer Service Center. See also the **Transfers** section of this prospectus, page 58, for information about making subaccount allocation changes;
- Substitute a new fund for a fund in which a subaccount currently invests. A substitution may become necessary if, in our judgment:
 - ▷ A fund no longer suits the purposes of your policy;
 - ▷ There is a change in laws or regulations;
 - ▷ There is a change in the fund's investment objectives or restrictions;
 - ▷ The fund is no longer available for investment; or
 - ▷ Another reason we deem a substitution is appropriate.
- In the case of a substitution, the new fund may have different fees and charges than the fund it replaced;
- Transfer assets related to your policy class to another separate account;
- Withdraw the variable account from registration under the 1940 Act;
- Operate the variable account as a management investment company under the 1940 Act;
- Cause one or more subaccounts to invest in a fund other than, or in addition to, the funds currently available;
- Stop selling the policy;
- End any employer or plan trustee agreement with us under the agreement's terms;
- Limit or eliminate any voting rights for the variable account; or
- Make any changes required by the 1940 Act or its rules or regulations.

We will not make a change until the change is disclosed in an effective prospectus or prospectus supplement, authorized, if necessary, by an order from the SEC and approved, if necessary, by the appropriate state insurance department(s). We will notify you of changes. If you wish to transfer the amount you have in the affected subaccount to another subaccount or to the fixed account, you may do so free of charge. Just notify us at our Customer Service Center.

The Fixed Account

You may allocate all or a part of your net premium and transfer your net policy value into the fixed account. We declare the interest rate that applies to all amounts in the fixed account. Although the interest rate will change over time, the interest rate will never be less than 3.00%. Additionally, we guarantee that the interest rate will not change more frequently than every policy anniversary. Interest compounds daily at an effective annual rate that equals the declared rate. We credit interest to the fixed account on a daily basis. We pay interest regardless of the actual investment performance of our general account. We bear all of the investment risk for the fixed account.

In the policy the “fixed account” is referred to as the “Guaranteed Interest Division.”

Your fixed account value equals the net premium you allocate to the fixed account, plus interest earned, minus amounts you transfer out or withdraw. It may be reduced by fees and charges assessed against your policy value.

The fixed account guarantees principal and is part of our general account. The general account supports our non-variable insurance and annuity obligations. We have not registered interests in the fixed account under the Securities Act of 1933, as amended (“1933 Act”). Also, we have not registered the fixed account or the general account as an investment company under the 1940 Act (because of exemptive and exclusionary provisions). This means that the general account, the fixed account and interests in it are generally not subject to regulation under these Acts.

The SEC staff has not reviewed the disclosures in this prospectus relating to the general account and the fixed account. These disclosures, however, may be subject to certain requirements of the federal securities law regarding accuracy and completeness of statements made.

DETAILED INFORMATION ABOUT THE POLICY

This prospectus describes our standard ING VUL-CV variable universal life insurance policy. The policy provides death benefits, policy values and other features of traditional life insurance contracts. There may be variations in policy features, benefits and charges because of requirements of the state where we issue your policy. We describe all such differences in your policy.

If you would like to know about state variations, please ask your agent/registered representative. We can provide him/her with the list of variations that will apply to your policy.

We and our affiliates offer various other products with different features and terms than the policy offered through this prospectus, and that may offer some or all of the same funds. These products have different benefits, fees and charges, and may or may not better match your needs. Please note that some of the company's management personnel and certain other employees may receive a portion of their employment compensation based on the amount of policy values allocated to funds affiliated with ING. You should be aware that there may be alternative products available, and, if you are interested in learning more about these other products, contact our Customer Service Center or your agent/registered representative.

Underwriting

On the application you will provide us with certain health and other necessary information. Upon receipt of an application, we will follow our underwriting procedures to determine whether the proposed insured person is insurable by us. Before we can make this determination, we may need to request and review medical examinations of and other information about the proposed insured person. Through our underwriting process we also determine the risk class for the proposed insured person if the application is accepted. Risk class is based on such factors as the proposed insured person's age, gender, health and occupation. Risk class will impact the cost of insurance rates you will pay and may also affect premiums and other policy fees, charges and benefits.

We offer policies on a fully underwritten, simplified issue and guaranteed issue basis.

Simplified issue and guaranteed issue policies are available for certain individuals in group or sponsored arrangements. We issue simplified issue and guaranteed issue policies up to a preset face amount with reduced evidence of insurability as compared to fully underwritten policies. More evidence of insurability is required for fully underwritten policies than simplified issue policies, and even less evidence is required for guaranteed issue policies. Eligibility for a simplified issue policy versus a guaranteed issue policy will depend on the nature of the individuals in the group or sponsored arrangement to be covered and such factors as the proposed insured person's age and/or health and the amount of coverage.

Eligibility for a simplified issue or a guaranteed issue policy also requires that each proposed insured person:

- Is actively at work at least 30 hours per week performing normal duties;
- Has been currently employed and actively at work for the past 90 days;
- Must answer certain health related questions and may be required to provide certain medical information;
- Must indicate tobacco use, type and frequency. Tobacco use includes use of any substance in the past 12 months that contains nicotine; and
- Must consent to be insured.

We also have select and regular rates for simplified issue and guaranteed issue policies. Eligibility for select or regular rates also depends on the nature and characteristics of the individuals in the group or sponsored arrangement to be covered. In general, regular rates are available to certain executive, professional and technical groups and select rates are available only to executive groups.

Simplified issue and guaranteed issue policies carry different mortality risks compared with policies that are fully underwritten, and the cost of insurance, mortality and expense risk, policy and administrative charges may be greater for simplified issue and guaranteed issue policies. These charges under these circumstances may depend on the:

- Issue age of the insured person; and
- Risk class of the insured person.

Based on simplified issue and guaranteed issue underwriting, a proposed insured can be rated or excluded from coverage based on, among other things, serious illness, hospitalization, employment status and/or citizenship.

Generally, on a current basis, the overall charges are higher for simplified issue or guaranteed issue policies with regular rates than for those with select rates, and both have higher overall charges than similar fully underwritten policies in the standard rate classes. This means that an insured person in a group or sponsored arrangement could get individual fully underwritten insurance coverage at a lower overall cost.

We reserve the right to reject an application for any reason permitted by law. If an application is rejected, any premium received will be returned without interest.

Purchasing a Policy

To purchase a policy you must submit an application to us. On that application you will, among other things, select:

- The amount of your total insurance coverage (which generally must be at least \$50,000);
- Your initial death benefit option;
- The death benefit qualification test to apply to your policy; and
- Any riders or optional benefits.

On the date coverage under the policy begins (the “policy date”), the person on whose life we issue the policy (the “insured person”) generally can be no more than age 85 (70 for guaranteed and simplified issue policies). “Age” under the policy means the insured person’s age on the birthday nearest to the policy date. From time to time, we may accept an insured person who exceeds our normal maximum age limit. We will not unfairly discriminate in determining the maximum age at issue. All exceptions to our normal limits are dependent upon our ability to obtain acceptable reinsurance coverage for our risk with an older insured. We may also set a minimum age to issue a policy.

You may request that we back-date the policy up to six months to allow the insured person to give proof of a younger age for the purposes of your policy. Except for cash on delivery policies, we generally will not reissue a policy to change the policy date.

Important Information About the Adjustable Term Insurance Rider. It may be to your economic advantage to include all or part of your insurance coverage under the Adjustable Term Insurance Rider. Working with your agent/registered representative, consider the factors described in the **Adjustable Term Insurance Rider** section of this prospectus, page 44, when deciding whether to include coverage under the Adjustable Term Insurance Rider and in what proportion to the total amount of coverage under your policy.

Premium Payments

Premium payments are flexible and you may choose the amount and frequency of premium payments, within limits, including:

- We may refuse to accept any premium less than \$25;
- You cannot pay additional premiums after age 121;
- We may refuse any premium that would disqualify your policy as life insurance under Section 7702 of the Internal Revenue Code;
- We may refuse any premium that would cause your policy to become a modified endowment contract under Section 7702A of the Internal Revenue Code without your prior written acknowledgement accepting your policy as a modified endowment contract; and
- We may refuse to accept any premium that does not comply with our anti-money laundering program. **See Anti-Money Laundering, page 77.**

After we deduct the premium expense charge from your premium payments, we apply the net premium to your policy as described below.

A premium payment is received by us when it is received at our offices. After you have paid your initial premium, we suggest you send payments directly to us, rather than through your agent/registered representative, to assure the earliest crediting date.

Your initial premium must be at least equal to the sum of the scheduled premium from the policy date through the investment date. The investment date is the date we apply the net premium to your policy.

Scheduled Premium. You may select your scheduled (planned) premium (within our limits) when you apply for your policy. The scheduled premium, shown in your policy and schedule, is the amount you choose to pay over a stated time period. This amount may or may not be enough to keep your policy in force. You may receive premium reminder notices for the scheduled premium on a quarterly, semi-annual or annual basis. You are not required to pay the scheduled premium.

You can change the amount of your scheduled premium within our minimum and maximum limits at any time. If you fail to pay your scheduled premium or if you change the amount of your scheduled premium, your policy performance will be affected.

If you have an optional death benefit guarantee rider, your scheduled premium should not be less than the guarantee period annual premium shown in your policy. **See Death Benefit Guarantees, page 41.**

Unscheduled Premium Payments. Generally speaking, you may make unscheduled premium payments at any time, however:

- We may refuse to accept any premium less than \$25;
- You cannot pay additional premiums after age 121;
- We may refuse to accept or limit the amount of an unscheduled premium payment if it would result in an increase in the amount of the base death benefit required by the federal income tax law definition of life insurance. We may require satisfactory evidence that the insured person is insurable according to our normal underwriting rules for the applicable risk class and rating at the time that you make the unscheduled premium payment if the base death benefit is increased due to an unscheduled premium payment;
- We may require satisfactory evidence that the insured person is insurable according to our normal underwriting rules for the applicable risk class and rating at the time that you make the unscheduled premium payment if an unscheduled premium payment will cause the net amount at risk to increase;
- We will return premium payments that would cause your policy to become a modified endowment contract, unless you have acknowledged in writing the new modified endowment contract status for your policy; and
- Our acceptance of an unscheduled premium payment may be subject to certain issue limitations and conditioned on the availability of reinsurance coverage.

Satisfactory evidence of insurability may include receipt of an application and required medical information.

Target Premium. Target premium is not based on your scheduled premium. Target premium is actuarially determined based on the age and gender of the insured person. The target premium is used to determine your premium expense charge and the sales compensation we pay. It may or may not be enough to keep your policy in force. You are not required to pay the target premium and there is no penalty for paying more or less. The target premium for your policy and additional segments is listed in your policy schedule pages.

Premium Payments Affect Your Coverage. Unless you have an optional death benefit guarantee rider, your coverage lasts only as long as you have a positive net policy value that is enough to pay the periodic fees and charges due each month. If you do not meet this requirement, your policy will enter a 61-day grace period and you must make a sufficient premium payment to keep your policy from lapsing. **See Lapse, page 66.**

If you have an optional death benefit guarantee rider, we guarantee that your policy will not lapse during the guarantee period provided your cumulative premium payments minus any partial withdrawals and any outstanding loan amount and accrued loan interest are at least equal to the guarantee period annual premium and your net policy value meets certain diversification requirements. **See Death Benefit Guarantees, page 41.**

Allocation of Net Premium. Until your initial net premium is allocated as described below, we hold premiums in a general suspense account. Premiums held in this suspense account do not earn interest.

We apply the initial net premium to your policy after all of the following conditions have been met:

- We receive the required initial premium;
- All issue requirements have been received by our Customer Service Center; and
- We approve your policy for issue.

Amounts you designate for the fixed account will be allocated to that account on the investment date. If your state requires return of your premium during the free look period, we initially invest amounts you have designated for the subaccounts of the variable account in the subaccount that invests in the ING Liquid Assets Portfolio. We later transfer these amounts from this subaccount to the available subaccounts that you have selected based on your most recent premium allocation instructions. This transfer occurs five days after the date we mailed your policy to you plus the length of your state free look period.

If your state provides for return of your policy value during the free look period (or provides no free look period), we allocate amounts you designated for the subaccounts of the variable account directly into those subaccounts.

All net premiums we receive after the applicable period are allocated to your policy on the valuation date of their receipt in good order. We will allocate net premiums to the available subaccounts using your most recent premium allocation instructions specified in percentages stated to the nearest tenth and totaling 100%. If your most recent premium allocation instructions includes a fund that corresponds to a subaccount that is closed to new investment (we will notify you in advance by a supplement to this prospectus if we close a subaccount) or is otherwise unavailable, net premium received that would have been allocated to the subaccount corresponding to the closed or otherwise unavailable fund may be automatically allocated among the other available subaccounts according to your most recent allocation instructions. If your most recent allocation instructions do not include any available funds, you must provide us with alternative allocation instructions or the premium payment will be returned to you. You may give us alternative allocation instructions by contacting our Customer Service Center. Your failure to provide us with alternative allocation instructions before we return your premium payment(s) may result in your policy entering the 61 day grace period and/or your policy lapsing without value. **See Lapse, page 66, for more information about how to keep your policy from lapsing. See also Reinstatement, page 67, for more information about how to put your policy back in force if it has lapsed.**

Free Look Period

You have the right to examine your policy and return it to us (for any reason) within the period shown in the policy. The period during which you have this right is called the free look period and starts on the date you receive your policy. If you return your policy to us within the free look period, we cancel it as of your policy date.

If you cancel your policy during the free look period, you will receive a refund as determined by state law. Generally, there are two types of free look refunds:

- Refund of all premium we have received from you; or
- Refund of your policy value plus a refund of all charges deducted.

The type of refund that applies in your state will be specified in your policy. The type of free look refund will affect when premium received before the end of the free look period is allocated to the subaccounts. **See Allocation of Net Premium, page 26.**

Temporary Insurance

If you apply and qualify, we may issue temporary insurance in an amount equal to the amount of insurance coverage for which you applied, up to \$1million, which includes other in-force coverage you have with us.

Temporary insurance coverage begins when all of the following events have occurred:

- You have completed and signed our temporary insurance coverage form;
- We have received and accepted a premium payment of at least your scheduled premium (selected on your application); and
- The necessary parts of the application are complete.

Unless otherwise provided by state law, temporary insurance coverage ends on the earliest of:

- Five days after we mail the premium refund to the address on your application;
- Five days after we mail notice of termination to the address on your application;
- Your policy date;
- The date we refuse to issue a policy based on your application; or
- 90 days after you sign our temporary life insurance coverage form.

There is no death benefit under the temporary insurance coverage if any of the following events occur:

- There is a material misrepresentation in your answers on the temporary insurance coverage form;
- There is a material misrepresentation in statements on your application;
- The person or persons intended to be insured die by suicide or self-inflicted injury; or
- The bank does not honor your premium check or authorized withdrawal.

During the period of temporary insurance coverage your premium payments are held by us in a general suspense account until underwriting is completed and the policy is issued or the temporary insurance coverage otherwise ends. Premiums held in this suspense account do not earn interest and they are not allocated to the investment options available under the policy until a policy is issued. If a policy is not issued and temporary coverage ends, any premium received will be returned without interest. **See Allocation of Net Premium, page 26.**

Fees and Charges

We deduct fees and charges under the policy to compensate us for:

- Providing the insurance benefits of the policy (including any rider benefits);
- Administering the policy;
- Assuming certain risks in connection with the policy; and
- Incurring expenses in distributing the policy.

The amount of a fee or charge may be more or less than the cost associated with the service or benefit. Accordingly, excess proceeds from one fee or charge may be used to make up a shortfall on another fee or charge, and we may earn a profit on one or more of these fees and charges. We may use any such profits for any proper corporate purpose, including, among other things, payment of sales expenses.

Transaction Fees and Charges

We deduct the following transaction fees and charges from your policy value each time you make certain transactions.

Premium Expense Charge. We deduct a premium expense charge from each premium payment we receive.

<u>Segment Year</u>	<u>Premium Expense Charge for Amounts up to Target Premium</u>	<u>Premium Expense Charge for Amounts in Excess of Target Premium</u>
1	9.00%	6.00%
2 +	4.50%	3.00%

This charge helps offset:

- The expenses we incur in selling the policy;
- The costs of various state and local taxes. We pay state and local taxes in almost all states. These taxes vary in amount from state to state and may vary from jurisdiction to jurisdiction within a state; and
- The cost associated with the federal income tax treatment of our deferred acquisition costs. This cost is determined solely by the amount of life insurance premium we receive.

Partial Withdrawal Fee. We deduct a partial withdrawal fee each time you take a partial withdrawal from your policy. The amount of this fee is \$10. We deduct the partial withdrawal fee proportionately from your fixed and variable account values that remain after the partial withdrawal.

This fee helps offset the expenses we incur when processing a partial withdrawal.

Surrender Charge. We deduct a surrender charge during the first ten segment years when you:

- Surrender your policy;
- Allow your policy to lapse;
- Decrease your base insurance coverage; or
- Take a partial withdrawal that decreases the amount of your base insurance coverage.

The amount of the surrender charge depends on the amount of base insurance coverage surrendered or decreased and the surrender charge rates.

When you purchase a policy or increase your base insurance coverage, we set surrender charge rates based on the gender and age of the insured person. Surrender charges apply for the first ten years of each segment of base insurance coverage. Surrender charge rates generally decline beginning in the fourth segment year and reach zero beginning in the eleventh segment year. Each coverage segment will have its own set of surrender charge rates which will apply only to that segment. **See Changes in the Amount of Your Insurance Coverage, page 35.** The rates that apply to you will be set forth in your policy. **See the Transaction Fees and Charges table on page 8 for the minimum and maximum surrender charge rates and the rates for a representative insured person.**

For full surrenders, you will receive the surrender value of your policy. For decreases in the amount of base insurance coverage, the surrender charge will reduce your policy value. If there are multiple segments of base insurance coverage, the coverage decreases and surrender charges assessed will be processed on a pro rata basis.

In the early policy years the surrender charge may exceed the policy value because the surrender charge may be more than the cumulative premiums paid minus policy fees and charges. Therefore, you should purchase a policy only if you intend and have the financial capability to keep the policy in force for a substantial period of time.

The surrender charge helps offset the expenses we incur in issuing and distributing the policy.

Excess Illustration Fee. We currently do not assess this fee, but we reserve the right to assess a fee of up to \$25 for each illustration of your policy values that you request after the first each policy year.

This fee helps offset the costs we incur when processing requests for excess illustrations.

Redemption Fees. If applicable, we may deduct the amount of any redemption fees imposed by the underlying mutual funds as a result of withdrawals, transfers or other fund transactions you initiate. Redemption fees, if any, are separate and distinct from any transaction charges or other charges deducted from your policy value.

Periodic Fees and Charges

We deduct the following periodic fees and charges from your policy value on the monthly processing date. The monthly processing date is the same date each month as your policy date. If that date is not a valuation date, then the monthly processing date is the next valuation date.

At any time you may choose one investment option from which we will deduct your periodic fees and charges. If you do not choose the investment option or the amount in your chosen investment option is not enough to cover the periodic fees and charges, then your periodic fees and charges are taken from the subaccounts and fixed account in the same proportion that your value in each has to your net policy value.

Cost of Insurance. Each month we deduct a cost of insurance charge equal to our current monthly cost of insurance rates multiplied by the net amount at risk for each segment of your base insurance coverage. The net amount at risk as calculated on each monthly processing date equals the difference between:

- Your current base death benefit, discounted to take into account one month's interest earnings at an assumed 3.00% annual interest rate; and
- Your policy value minus the periodic fees and charges due on that date, other than cost of insurance charges.

Monthly cost of insurance rates are based on the insured person's age at issue and each date you increase your insurance coverage (a "segment date"), gender, underwriting type, risk class and segment year. They will not, however, be greater than the guaranteed cost of insurance rates shown in the policy, which are based on the 2001 Commissioner's Standard Ordinary Sex Distinct Mortality Tables. We will apply unisex rates where appropriate under the law. This currently includes policies issued in the state of Montana and policies issued to employers or employee organizations in connection with employment related insurance or benefit programs. The rates that apply to you will be set forth in your policy. **See the Periodic Fees and Charges table on page 9 for the minimum and maximum cost of insurance rates and the rates for a representative insured person.**

Separate cost of insurance rates apply to each segment of your base insurance coverage. The maximum rates for the initial segment and each new segment of your base insurance coverage will be printed in your policy schedule pages.

The cost of insurance charge varies from month to month because of changes in your net amount at risk, changes in your death benefit and the increasing age of the insured person. The net amount at risk is affected by the same factors that affect your policy value, namely:

- The net premium applied to your policy;
- The fees and charges we deduct;
- Any partial withdrawals you take;
- Interest earnings on the amounts allocated to the fixed account;
- Interest earned on amounts held in the loan account; and
- The investment performance of the funds underlying the subaccounts of the variable account.

We calculate the net amount at risk separately for each segment of your base insurance coverage. We allocate the net amount at risk to segments of the base death benefit in the same proportion that each segment has to the total base death benefit for all insurance coverage as of the monthly processing date.

There are no cost of insurance charges during the continuation of coverage period.

The cost of insurance charge compensates us for the ongoing costs of providing insurance coverage, including the expected cost of paying death benefit proceeds that may be more than your policy value.

Mortality and Expense Risk Charge. Each month we may deduct from your policy value a mortality and expense risk charge based on the amount invested in the subaccounts according to the following rates:

Percentage of the Amount Invested in the Variable Account	
Current	Guaranteed
0.00%	0.025% (0.30% on an annual basis)

This charge, if assessed, will help compensate us for the mortality and expense risks we assume when we issue a policy. The mortality risk is the risk that insured people, as a group, may live less time than we estimated. The expense risk is the risk that the costs of issuing and administering the policies and operating the subaccounts of the variable account are greater than we estimated.

Policy Charge. Each month we deduct a policy charge. This charge varies based on underwriting type, the amount of base insurance coverage and policy duration. The current policy charge each month for policies with at least \$100,000 in base insurance coverage is as follows:

Policy Year	Fully Underwritten	Regular Guaranteed Issue Underwriting	Select Guaranteed/Simplified Issue Underwriting
	Current	Current	Current
1-5	\$30	\$30	\$30
6-10	\$15	\$30	\$15
11-20	\$10	\$20	\$15
21+	\$8	\$20	\$15

The guaranteed policy charge for all policies with at least \$100,000 in base coverage and the current and guaranteed policy charge for all policies with less than \$100,000 in base insurance coverage is \$30 per month in all policy years.

This charge helps compensate us for the costs associated with:

- Processing applications;
- Conducting medical examinations;
- Establishing policy records; and
- Underwriting.

Administrative Charge. Each month we deduct an administrative charge equal to our current monthly administrative charge rates multiplied by the amount of your base insurance coverage divided by 1,000. The rates vary based on the insured person's age, gender, underwriting type and risk class and generally decrease each year after the fifth and tenth segment years. The rates that apply to you will be set forth in your policy. **See the Periodic Fees and Charges table on page 9 for the minimum and maximum administrative charge rates and the rates for a representative insured person.**

This charge helps offset the costs we incur in administering the policy, including costs associated with:

- Billing and collecting premiums;
- Processing claims and policy transactions;
- Keeping records;
- Reporting and communicating with policy owners; and
- Our overhead and other expenses.

Optional Rider Fees and Charges

There are separate fees and charges for optional rider benefits. **See the Optional Rider Fees and Charges table beginning on page 10, and the Optional Rider Benefits section on page 42 for more information about the optional rider benefits and the applicable fees and charges.**

Waiver and Reduction of Fees and Charges

We may waive or reduce any of the fees and charges under the policy, as well as the minimum amount of insurance coverage set forth in this prospectus. Any waiver or reduction will be based on expected economies that result in lower sales, administrative or mortality expenses. For example, we may expect lower expenses in connection with sales to:

- Certain groups or sponsored arrangements (including our employees, employees of our affiliates, our appointed sales agents and certain family members of each of these groups of individuals);
- Corporate or business policy owners/purchasers (including sales related to a corporate or business policy owner's election to substitute one insured person who is an employee for another); or
- Our policyholders or the policyholders of our affiliated companies.

Any variation in fees and charges will be based on differences in costs or services and our rules in effect at the time. We may change our rules from time to time, but we will not unfairly discriminate in any waiver or reduction.

Fund Fees and Expenses

As shown in the fund prospectuses and described in the Fund Fees and Expenses table on page 13 of this prospectus, each fund deducts management fees from the amounts allocated to the fund. In addition, each fund deducts other expenses which may include service fees that may be used to compensate service providers, including the company and its affiliates, for administrative and policy owner services provided on behalf of the fund. Furthermore, certain funds may deduct a distribution or 12b-1 fee, which is used to finance any activity that is primarily intended to result in the sale of fund shares. **For a more complete description of the funds' fees and expenses, review each fund's prospectus.**

The company or its U.S. affiliates receive substantial revenue from each of the funds or the funds' affiliates, although the amount and types of revenue vary with respect to each of the funds offered through the policy. This revenue is one of several factors we consider when determining the policy fees and charges and whether to offer a fund through our policies. **Fund revenue is important to the company's profitability, and it is generally more profitable to offer affiliated funds than to offer unaffiliated funds.**

In terms of total dollar amounts received, the greatest amount of revenue generally comes from assets allocated to funds managed by Directed Services LLC or other company affiliates, which funds may or may not also be subadvised by another company affiliate. Assets allocated to funds managed by a company affiliate but subadvised by unaffiliated third parties generally generate the next greatest amount of revenue. Finally, assets allocated to unaffiliated funds generate the least amount of revenue. The company expects to make a profit from this revenue to the extent it exceeds the company's expenses, including the payment of sales compensation to our distributors.

Types of Revenue Received from Affiliated Funds. Affiliated funds are (a) funds managed by Directed Services LLC or other company affiliates, which funds may or may not also be subadvised by another company affiliate; and (b) funds managed by a company affiliate but that are subadvised by unaffiliated third parties.

Revenues received by the company from affiliated funds may include:

- A share of the management fee deducted from fund assets;
- Service fees that are deducted from fund assets;
- For certain share classes, the company or its affiliates may also receive compensation paid out of 12b-1 fees that are deducted from fund assets; and
- Other revenues that may be based either on an annual percentage of average net assets held in the fund by the company or a percentage of the fund's management fees.

These revenues may be received as cash payments or according to a variety of financial accounting techniques that are used to allocate revenue and profits across the organization. In the case of affiliated funds subadvised by unaffiliated third parties, any sharing of the management fee between the company and the affiliated investment adviser is based on the amount of such fee remaining after the subadvisory fees has been paid to the unaffiliated subadviser. Because subadvisory fees vary by subadviser, varying amounts of revenue are retained by the affiliated investment adviser and ultimately shared with the company.

Types of Revenue Received from Unaffiliated Funds. Revenue received from each of the unaffiliated funds or their affiliates is based on an annual percentage of the average net assets held in that fund by the company. Some unaffiliated funds or their affiliates pay us more than others and some of the amounts we receive may be significant. Revenues received by the company from unaffiliated funds and/or their affiliates may include:

- For certain funds, compensation paid from 12b-1 fees or service fees that are deducted from fund assets; and
- Additional payments for administrative, recordkeeping or other services that we provide to the funds or their affiliates, such as processing purchase and redemption requests and mailing fund prospectuses, periodic reports and proxy materials. These additional payments may be used by us to finance distribution of the policy.

These revenues are received as cash payments, and if the three unaffiliated fund families currently offered through the policy were individually ranked according to the total amount they paid to the company or its affiliates in 2006, that ranking would be as follows:

- Fidelity[®] Variable Insurance Product Portfolios;
- American Funds Insurance Series; and
- Neuberger Berman AMT Portfolios[®].

If the revenues received from affiliated funds were included in this list, payments from Directed Services LLC and other company affiliates would be at the top of the list.

In addition to the types of revenue received from affiliated and unaffiliated funds described above, affiliated and unaffiliated funds and their investment advisers, subadvisers or affiliates may participate at their own expense in company sales conferences or educational and training meetings. In relation to such participation, a fund's investment adviser, subadviser or affiliate may make fixed dollar payments to help expense offset the cost of the meetings or sponsor events associated with the meetings. In exchange for these expense offset or sponsorship arrangements, the investment adviser, subadviser or affiliate may receive certain benefits and access opportunities to company sales representatives and wholesalers rather than monetary benefits. These benefits and opportunities include, but are not limited to, co-branded marketing materials, targeted marketing sales opportunities, training opportunities at meetings, training modules for sales personnel and opportunity to host due diligence meetings for representatives and wholesalers.

Certain funds may be structured as “fund of funds.” These funds may have higher fees and expenses than a fund that invests directly in debt and equity securities because they also incur the fees and expenses of the underlying funds in which they invest. These funds are affiliated funds, and the underlying funds in which they invest may be affiliated funds as well. The fund prospectuses disclose the aggregate annual operating expenses of each portfolio and its corresponding underlying fund or funds. The “fund of funds” available through the policy are identified in the list of funds available through the variable account on page 18.

Please note that certain management personnel and other employees of the company or its affiliates may receive a portion of their total employment compensation based on the amount of net assets allocated to affiliated funds. ***See Distribution of the Policy, page 82.***

Death Benefits

You decide the amount of life insurance protection you need, now and in the future. Generally, we require a minimum of \$50,000 of base insurance coverage to issue your policy. We may lower this minimum for certain group, sponsored or corporate purchasers. The amount of insurance coverage in effect on your policy date is your initial coverage segment.

In the policy the amount of base insurance coverage you select is referred to as the “Stated Death Benefit”

It may be to your economic advantage to include part of your insurance coverage under the Adjustable Term Insurance Rider. ***See Important Information About the Adjustable Term Insurance Rider, page 24.***

Changes in the Amount of Your Insurance Coverage

Subject to certain limitations, generally you may change the amount of your insurance coverage after the first policy year (first monthly processing date for an increase). The change will be effective on the next monthly processing date after we approve your written request, however changes scheduled for the future will be effective on the applicable policy anniversary.

There may be underwriting or other requirements that must be met before we will approve a change. If we approve your requested change we will send a new policy schedule page to you. You should attach it to your policy. We may ask you to return your policy to our Customer Service Center so that we may do this for you.

Changes in the amount of your insurance coverage must be for at least \$1,000.

You may request an increase in the amount of your insurance coverage, subject to the following:

- Increases after age 90 (age 75 for guaranteed issue and simplified issue policies) are not allowed; and
- Increases are subject to underwriting approval and such approval may be conditioned on certain issue limitations and availability of reinsurance coverage.

See also Adjustable Term Insurance Rider, page 44.

A requested increase in base insurance coverage will cause a new coverage segment to be created. A coverage segment or segment is a block of insurance coverage. Once we create a new segment, it is permanent unless law requires differently.

Each new segment will have:

- A new premium expense charge;
- New cost of insurance charges, guaranteed and current;
- New administrative charges;
- A new incontestability period;
- A new suicide exclusion period;
- A new target premium; and
- A new surrender charge.

If a death benefit option change causes the amount of base insurance coverage to increase, no new segment is created. Instead, the size of each existing segment(s) is (are) changed. If a death benefit option change causes the amount of base insurance coverage to decrease, each segment is decreased.

In determining the net amount at risk for each coverage segment we allocate the net amount at risk among the base coverage segments in the same proportion that each segment bears to the total amount of base insurance coverage.

Refusal of a scheduled increase or your request to decrease the amount of your insurance coverage will terminate all future scheduled increases. Certain requests to increase the amount of your insurance coverage may also cancel all future scheduled increases.

You may decrease the amount of your insurance coverage, however, decreases below the minimum we require to issue you a policy are not allowed.

Decreases in insurance coverage may result in:

- Surrender charges on the amount of the decrease;
- Reduced target premium amounts; and
- Reduced cost of insurance charges.

Decreases in the amount of insurance coverage will first reduce your total insurance coverage amount. We decrease your base insurance coverage amount only after your Adjustable Term Insurance Rider coverage is reduced to zero. If you have more than one segment, we divide decreases in base coverage among your coverage segments pro rata unless law requires differently.

We reserve the right not to approve a requested change in your insurance coverage that would disqualify your policy as life insurance under Section 7702 of the Internal Revenue Code. In addition, we may refuse to approve a requested change in your insurance coverage that would cause your policy to become a modified endowment contract under Section 7702A of the Internal Revenue Code without your prior written acknowledgment accepting your policy as a modified endowment contract. Decreasing the amount of insurance coverage under your policy could cause your policy to be considered a modified endowment contract. If this happens, prior and subsequent distributions from the policy (including loans) may be subject to adverse tax treatment. You should consult a qualified tax adviser before changing your amount of insurance coverage. **See Modified Endowment Contracts, page 70**

Continuation of Coverage

The continuation of coverage feature automatically continues your insurance coverage in force beyond the policy anniversary nearest the insured person's 121st birthday (the "continuation of coverage period"), unless prohibited by state law. If you do not surrender your policy before this date, on this date:

- The amount of your total insurance coverage becomes your base insurance coverage amount;
- Death benefit options 2 and 3 are converted to death benefit Option 1, if applicable;
- All riders are terminated;
- Your net policy value is transferred into the fixed account and subsequent transfers into the subaccounts are not allowed; and
- Dollar cost averaging and automatic rebalancing programs are terminated.

Your insurance coverage continues in force until the death of the insured person, unless the policy lapses or is surrendered. However:

- We accept no further premium payments; and
- We deduct no further fees and charges except transaction fees and charges, if applicable.

Partial withdrawals and loans are allowed during the continuation of coverage period. If you have an outstanding loan, interest continues to accrue. If you fail to make sufficient loan or loan interest payments, it is possible that the outstanding loan amount plus accrued loan interest may become greater than your policy value and cause your policy to lapse. To avoid lapse, you may repay the loan and loan interest during the continuation of coverage period.

If you wish to stop coverage during the continuation of coverage period, you may surrender your policy and receive the net policy value. There is no surrender charge during this period. All other normal consequences of surrender apply. **See Surrender, page 65.**

The continuation of coverage feature is not available in all states. If a state has approved this feature, it is automatic under your policy. In certain states the death benefit during the continuation of coverage period is the net policy value. Contact your agent/registered representative or our Customer Service Center to find out if this feature is available in your state and which type of death benefit applies in your state.

The tax consequences of coverage continuing beyond the insured person's 100th birthday are uncertain. You should consult a qualified tax adviser as to those consequences. See Continuation of a Policy, page 72.

Death Benefit Qualification Tests

The death benefit proceeds are generally not subject to federal income tax if your policy continues to meet the federal income tax definition of life insurance. Your policy will meet this definition of life insurance provided that it meets the requirements of either the guideline premium test or the cash value accumulation test.

When you apply for a policy you must choose either the guideline premium test or the cash value accumulation test to make sure your policy complies with the Internal Revenue Code's definition of "life insurance." You cannot change this choice once the policy is issued.

Guideline Premium Test. The guideline premium test requires that premium payments do not exceed certain statutory limits and your death benefit is at least equal to your policy value multiplied by a factor defined by law. The guideline premium test provides for a maximum amount of premium in relation to the death benefit and a minimum amount of death benefit in relation to policy value. The factors for the guideline premium test can be found in Appendix A to this prospectus.

Certain changes to a policy that uses the guideline premium test may allow the payment of premium in excess of the statutory limits in order to keep the policy from lapsing. In this circumstance, any such excess premium will be allocated to the fixed account in order for the policy to continue to meet the federal income tax definition of life insurance.

Cash Value Accumulation Test. The cash value accumulation test requires a policy's surrender value not to exceed the net single premium necessary to fund the policy's future benefits. Under the cash value accumulation test, there is generally no limit to the amount that may be paid in premiums as long as there is enough death benefit in relation to policy value at all times. The death benefit at all times must be at least equal to an actuarially determined factor, depending on the insured person's age and gender at any point in time, multiplied by the policy value. A description of how the cash value accumulation test factors are determined can be found in Appendix A to this prospectus.

Which Death Benefit Qualification Test to Choose. The guideline premium test limits the amount of premium that may be paid into a policy. If you do not want to pay premiums in excess of the guideline premium test limitations, you should consider the guideline premium test.

The cash value accumulation test does not limit the amount of premium that may be paid into a policy. If you desire to pay premiums in excess of the guideline premium test limitations you should elect the cash value accumulation test. However, any premium that would increase the net amount at risk is subject to evidence of insurability satisfactory to us. Required increases in the death benefit due to growth in policy value will generally be greater under the cash value accumulation test than under the guideline premium test. Required increases in the death benefit will increase the cost of insurance under the policy, thereby reducing the policy value.

Death Benefit Options

There are three death benefit options available under the policy. You choose the option you want when you apply for the policy. You may change that choice after your first monthly processing date and before age 121.

- Option 1.** Under death benefit Option 1, the base death benefit is the greater of:
- The amount of base insurance coverage in effect on the date of the insured person's death; or
 - Your policy value on the date of the insured person's death multiplied by the appropriate factor from the definition of life insurance factors described in Appendix A.

Under this option your base death benefit will remain level unless your policy value multiplied by the appropriate factor described in Appendix A exceeds the amount of base insurance coverage. In this case, your death benefit will vary as the policy value varies.

With Option 1, positive investment performance generally reduces your net amount at risk, which lowers your policy's cost of insurance charge. Option 1 also offers insurance coverage at a set amount with potentially lower cost of insurance charges over time.

- Option 2.** Under death benefit Option 2, the base death benefit is the greater of:
- The amount of base insurance coverage in effect on the date of the insured person's death plus your policy value; or
 - Your policy value on the date of the insured person's death multiplied by the appropriate factor from the definition of life insurance factors described in Appendix A.

Under this option your base death benefit will vary as the policy value varies and investment performance is reflected in your insurance coverage.

Option 2 is not available after age 121. If Option 2 is in effect at age 121, it automatically converts to death benefit Option 1. **See Continuation of Coverage, page 37.**

- Option 3.** Under death benefit Option 3, the base death benefit is the greater of:
- The amount of base insurance coverage in effect on the date of the insured person's death plus premiums paid minus withdrawals taken; or
 - Your policy value on the date of the insured person's death multiplied by the appropriate factor from the definition of life insurance factors described in Appendix A.

Under this option your base death benefit will vary as you pay premiums and take withdrawals or if your policy value multiplied by the appropriate factor described in Appendix A exceeds the amount of base insurance coverage plus premiums paid minus withdrawals taken.

Option 3 is not available after age 121. If Option 3 is in effect at age 121, it automatically converts to death benefit Option 1. **See Continuation of Coverage, page 37.**

Which Death Benefit Option to Choose. If you are satisfied with the amount of your base insurance coverage and prefer to have premium payments and favorable investment performance reflected to the maximum extent in the policy value and lower cost of insurance charges, you should choose death benefit Option 1. If you prefer to have premium payments and favorable investment performance reflected partly in the form of an increasing death benefit, you should choose death benefit Option 2. If you require a specific death benefit that would include a return of the premium paid, death benefit Option 3 may best meet your needs.

Changing Death Benefit Options. On or after the first monthly processing date and before age 121 you may change death benefit options as described below. We may require evidence of insurability under our normal rules of underwriting for some death benefit option changes.

Changing your death benefit option may reduce or increase your base and total insurance coverage amounts but it will not change the amount of your base and total death benefits. We may not approve a death benefit option change if it reduces the amount of insurance coverage below the minimum we require to issue your policy. The following death benefit option changes are allowed, and on the effective date of the change the amount of your base insurance coverage will change as follows:

Change From:	Change To:	Base Insurance Coverage Following the Change:
Option 1	Option 2	<ul style="list-style-type: none"> • Your base insurance coverage before the change minus your policy value as of the effective date of the change.
Option 2	Option 1	<ul style="list-style-type: none"> • Your base insurance coverage before the change plus your policy value as of the effective date of the change.
Option 3	Option 1	<ul style="list-style-type: none"> • Your base insurance coverage before the change plus the sum of all premium payments we have received minus all partial withdrawals you have taken as of the effective date of the change.

Your death benefit option change is effective on your next monthly processing date after we approve it.

After we approve your request, we send a new policy schedule page to you. You should attach it to your policy. We may ask you to return your policy to our Customer Service Center so that we can make this change for you.

If a death benefit option change causes the amount of insurance coverage to change, no new coverage segment(s) is (are) created. Instead, the size of each existing segment(s) is (are) changed. If you change death benefit options, there is no change to the amount of term insurance if you have the Adjustable Term Insurance Rider. **See Adjustable Term Insurance Rider, page 44.**

We do not impose a surrender charge if a death benefit option change results in a decrease in the amount of your base insurance coverage. Additionally, we do not adjust the target premium when you change your death benefit option. **See Surrender Charge, page 29.**

If your death benefit option is changed to Option 1 because you exercised the Overloan Lapse Protection Rider, notwithstanding any other information in this section your insurance coverage following the change will equal your policy value immediately before the change minus the Overloan Lapse Protection Rider charge with the difference multiplied by the appropriate guideline premium test factor described in Appendix A.

Changing your death benefit option may have tax consequences. You should consult a qualified tax adviser before making changes.

Death Benefit Proceeds

After the insured person's death, if your policy is in force we pay the death benefit proceeds to the beneficiaries. The beneficiaries are the people you name to receive the death benefit proceeds from your policy. The death benefit proceeds are equal to:

- Your base death benefit; plus
- The amount of any rider benefits; minus
- Any outstanding loan amount and accrued loan interest; minus
- Any outstanding accelerated benefit lien and accrued lien interest; minus
- Any outstanding fees and charges incurred before the insured person's death.

The death benefit is calculated as of the date of the insured person's death and will vary depending on the death benefit option you have chosen.

Death Benefit Guarantees

The following optional Death Benefit Guarantee Riders may be available and provide that the policy will not lapse even if the net policy value is not enough to pay the periodic fees and charges each month:

- 20-Year/Age 65 Death Benefit Guarantee Rider; and
- Lifetime Death Benefit Guarantee Rider.

If available, these optional rider benefits may be selected only when you apply for the policy. There may be a separate monthly charge for these rider guarantees. See **20-Year/Age 65 Death Benefit Guarantee Rider, page 42** and **Lifetime Death Benefit Guarantee Rider, page 49**.

Additional Insurance Benefits

Your policy may include additional insurance benefits, attached by rider. There are two types of riders:

- Those that provide optional benefits that you must select before they are effective; and
- Those that automatically come with the policy.

The following information does not include all of the terms and conditions of each rider, and you should refer to the rider to fully understand its benefits and limitations. We may offer riders not listed here. Not all riders may be available under your policy. Contact your agent/registered representative for a list of riders and their availability.

Optional Rider Benefits

The following riders may have an additional cost, but you may cancel optional riders at any time. ***Adding or canceling riders may have tax consequences. See Modified Endowment Contracts, page 70.***

20-Year/Age 65 Death Benefit Guarantee Rider. The 20-Year/Age 65 Death Benefit Guarantee Rider provides a guarantee that your policy and any Adjustable Term Insurance Rider coverage will not lapse for the greater of 20 years or to age 65 provided:

- Your cumulative premium payments minus any partial withdrawals and any outstanding loan amount and accrued loan interest are at least equal to the sum of the 20 year death benefit guarantee premium payments to the next monthly processing date; and
- Your net policy value meets one of the following diversification requirements:
 - ▷ Your net policy value is allocated to at least five investment options with no more than 35% invested in any one investment option; or
 - ▷ At least 65% of your net policy value is allocated to one or more of the ING LifeStyle portfolios.

Each month during the guarantee period we deduct a charge for this rider based on a rate that varies depending on the issue age of the insured person. **See the Optional Rider Fees and Charges table beginning on page 10.** The amount of this charge will be determined by dividing the amount of guaranteed coverage by 1,000 and multiplying the result by the rate set forth in your policy. The amount of guaranteed coverage equals the amount of your total insurance coverage minus your policy value.

You should consider the following when deciding whether to add the 20-Year/Age 65 Death Benefit Guarantee Rider to your policy:

- This rider is available for issue ages 25-75;
- You may add this rider only when you apply for the base policy;
- The 20-Year/Age 65 death benefit guarantee period begins on the policy date;
- The minimum premium required to keep this rider in effect will be set forth in your policy and will be based on monthly rates that vary according to the insured person's gender, risk class, age, underwriting type and death benefit option selected;
- If your policy benefits change, the minimum premium for this rider will also change;
- Transfers between investment options that are made in response to our notice to you that your policy is not sufficiently diversified will not count as transfers for purposes of any limits or restrictions on transfers that we may impose (**see Transfers, page 58**);
- This rider covers only your base policy and Adjustable Term Insurance Rider, if any. If your policy and any Adjustable Term Insurance Rider are kept in force because of the guarantee under this rider, coverage under all other riders may terminate;
- This rider may not be available for certain risk classes;
- This rider cannot be added to a policy with death benefit Option 3 or the Lifetime Death Benefit Guarantee Rider;
- You may terminate this rider at any time during the guarantee period upon written notice to us;
- A loan may cause the termination of this guarantee because we deduct your loan amount plus accrued interest from cumulative premiums paid when calculating whether you have paid sufficient premiums to keep the guarantee in effect; and
- Even if this rider terminates, your policy will not necessarily lapse (**see Lapse, page 66**).

We will notify you if on any monthly processing date you have not paid enough premium to keep this rider in force or your policy is not sufficiently diversified. This notice will show the amount of premium required to maintain this rider benefit and, if applicable, explain the diversification requirement. If we do not receive the required premium payment or you do not adequately diversify your policy within 61 days from the date of our notice, this rider will terminate. If this rider terminates, it cannot be reinstated.

Additional Insured Rider. This rider provides death benefits upon the death of a named immediate family member. The insured person under this rider can be no older than age 85. You may add up to five Additional Insured Riders to your policy. We require proof of insurability for each additional insured person. Minimum coverage for each additional insured person is \$10,000 for ages 0 to 14 and \$15,000 for ages 15 and older. Maximum coverage for all additional insured persons is five times your base insurance coverage. There is no defined premium for a given amount of Additional Insured Rider coverage. Instead, we deduct a separate monthly cost of insurance charge from your policy value. The cost of insurance for this rider is calculated as the monthly cost of insurance rate for the rider coverage(s) multiplied by the Additional Insured Rider death benefit(s) in effect at the monthly processing date. The cost of insurance rates are determined by us from time to time. They are based on the issue age(s), gender(s) and risk class(es) of the additional insured person(s), as well as the length of time since the rider was added to your policy. Rates for this rider will not exceed the levels in the 2001 Commissioner’s Standard Ordinary Sex Distinct, Smoker Distinct Mortality Table. **See the Optional Rider Fees and Charges table on beginning on page 10 for the minimum rates, maximum rates and the rates for a representative insured person.**

Adjustable Term Insurance Rider. You may increase the amount of your total insurance coverage under the policy by adding coverage under the Adjustable Term Insurance Rider. This rider allows you to schedule the pattern of insurance coverage appropriate for your anticipated needs. As the name suggests, the Adjustable Term Insurance Rider adjusts over time to maintain your desired level of total coverage.

You specify your amount of total insurance coverage when you apply for this rider. The amount of total insurance coverage can be level for the life of your policy or can be scheduled to change at the beginning of selected policy years.

Generally, the minimum amount of total insurance coverage under a policy is \$50,000.

The Adjustable Term Insurance Rider benefit is the difference between the amount of your total death benefit and your base death benefit, but not less than zero. The rider’s benefit automatically adjusts daily as the amount of your base death benefit changes. Your death benefit proceeds depend on which death benefit option is in effect.

Under death benefit Option 1, the total death benefit is the greater of:

- The amount of total insurance coverage you have selected; or
- Your policy value multiplied by the appropriate factor from the definition of life insurance factors described in Appendix A.

In the policy “base insurance coverage” or “base coverage” is referred to as the “Stated Death Benefit”; the “total insurance coverage” or “total coverage” is referred to as the “Target Death Benefit.”

Under death benefit Option 2, the total death benefit is the greater of:

- The amount of total insurance coverage you have selected plus your policy value; or
- Your policy value multiplied by the appropriate factor from the definition of life insurance factors described in Appendix A.

Under death benefit Option 3, the total death benefit is the greater of:

- The amount of total insurance coverage you have selected plus the sum of the premium payments we have received minus partial withdrawals you have taken; or
- Your policy value multiplied by the appropriate factor from the definition of life insurance factors described in Appendix A.

For example, under death benefit Option 1, assume your base death benefit changes as a result of a change in your policy value. The Adjustable Term Insurance Rider adjusts to provide death benefit proceeds equal to your total insurance coverage in each year:

<u>Base Death Benefit</u>	<u>Total Insurance Coverage</u>	<u>Adjustable Term Insurance Benefit</u>
\$201,500	\$250,000	\$48,500
\$202,500	\$250,000	\$47,500
\$202,250	\$250,000	\$47,750

It is possible that the amount of your adjustable term insurance may be zero if your base death benefit increases enough. Using the same example, if the base death benefit under your policy grew to \$250,000 or more, the adjustable term insurance benefit would be zero.

Even when the adjustable term insurance benefit is reduced to zero, your rider remains in effect until you remove it from your policy. Therefore, if the base death benefit later drops below the amount of your total insurance coverage, the Adjustable Term Insurance Rider coverage reappears to maintain the amount of your total insurance coverage.

Subject to the requirements outlined in the **Changes in the Amount of Your Insurance Coverage** section on page 35, once each policy year you may change the amount of your Adjustable Term Insurance Rider coverage (and thereby your total insurance coverage) provided:

- An increase in rider coverage may not exceed the lesser of 25% of the amount of your initial base insurance coverage or 200% of the most recent increase; and
- All increases in rider coverage, in total, may not exceed the lesser of four times the amount of your initial base insurance coverage or \$20 million.

There may be underwriting or other requirements that must be met before we will approve a change in your Adjustable Term Insurance Rider coverage.

We may choose to waive certain issue requirements and/or limitations on changes in Adjustable Term Insurance Rider coverage in certain circumstances, including those in which the policy is issued in relation to certain deferred compensation arrangements. We will not unfairly discriminate in any such waiver.

Unless you request and we approve a new schedule of changes in the amount of your total insurance coverage, any request to change the amount of your total insurance coverage will automatically terminate all changes that were previously scheduled and after the change the amount of your total insurance coverage will remain level and be equal to the amount in effect immediately following the change. Also, unless you request otherwise any request to increase your total insurance coverage will also be considered a request to increase the amount of base insurance coverage in an equal amount.

Partial withdrawals, changes from death benefit Option 1 to Option 2, and decreases in the amount of your base insurance coverage may reduce the amount of your total insurance coverage. **See Partial Withdrawals, page 64; and Changes in the Amount of Your Insurance Coverage, page 35.**

There is no defined premium for a given amount of adjustable term insurance benefit. Instead, we deduct separate monthly cost of insurance and administrative charges from your policy value. The cost of insurance for this rider is calculated as the monthly cost of insurance rate for the rider benefit multiplied by the amount of adjustable term insurance benefit in effect at the monthly processing date. The cost of insurance rates are determined by us from time to time. They are based on the issue age, gender, underwriting type and risk class of the insured person, as well as the length of time since your policy date. As a general rule, the current cost of insurance rates for a rider based on simplified issue or guaranteed issue underwriting are higher than those for a rider which is fully underwritten. This means that a healthy individual could pay higher cost of insurance rates for this rider than they would pay for a substantially similar rider if they use simplified issue or guaranteed issue underwriting methods. **See Underwriting, page 22.**

Each month we deduct an administrative charge for this rider equal to our current monthly administrative charge rates multiplied by the difference between the amount of your total insurance coverage and your base insurance coverage divided by 1,000. The rates vary based on the insured person's gender, underwriting type and risk class and generally decrease each year after the fifth segment year. The rates that apply to you will be set forth in your policy. **See the Optional Rider Fees and Charges table beginning on page 10 for the minimum and maximum administrative charge rates and the rates for a representative insured person.**

The total charges that you pay may be more or less if you have some coverage under an Adjustable Term Insurance Rider rather than just base insurance coverage. There are no premium expense charges or surrender charges for this coverage.

If the total insurance coverage is increased by you after the Adjustable Term Insurance Rider is issued, we use the same cost of insurance rate schedule for the entire coverage for this rider. These rates are based on the original risk class even though satisfactory new evidence of insurability is required for the increased schedule. Although the maximum cost of insurance rates for this rider are greater than the maximum cost of insurance rates for the base insurance coverage, the current rates for this rider are generally lower than current cost of insurance rates for the base insurance coverage.

Not all policy features may apply to the Adjustable Term Insurance Rider.

This rider will terminate on the earliest of the following dates:

- The expiration date of the policy grace period;
- The date the policy is terminated or surrendered;
- The next monthly processing date after we receive your written notice to cancel the rider; or
- The policy anniversary nearest the insured's 121st birthday.

If this rider terminates, it cannot be reinstated.

Important Information About the Adjustable Term Insurance Rider. It may be to your economic advantage to include all or part of your insurance coverage under the Adjustable Term Insurance Rider. Working with your agent/registered representative, consider the following when deciding whether to include coverage under the Adjustable Term Insurance Rider and in what proportion to the total amount of coverage under your policy:

- **Cost of Insurance and Other Fees and Charges.** The cost of insurance rates and other fees and charges affect the value of your policy. The lower the cost of insurance and other fees and charges, the greater the policy value. Accordingly, please be aware that:
 - ▷ The current cost of insurance rates for coverage under the Adjustable Term Insurance Rider are generally less than the current cost of insurance rates for coverage under the base policy;
 - ▷ The guaranteed maximum cost of insurance rates for coverage under the Adjustable Term Insurance Rider are generally more than the guaranteed maximum cost of insurance rates for coverage under the base policy; and
 - ▷ Some policy fees and charges that apply to coverage under the base policy may not apply to coverage under the Adjustable Term Insurance Rider.
- **Features and Benefits.** Certain features and benefits are limited or unavailable if you have Adjustable Term Insurance Rider coverage, including Death Benefit Guarantees.
- **Compensation.** We generally pay more compensation to your agent/registered representative on premiums paid for coverage under the base policy than we do on premiums paid for coverage under the Adjustable Term Insurance Rider. See *Distribution of the Policy*, page 82.

With these factors in mind, you should discuss with your agent/registered representative how the use of the Adjustable Term Insurance Rider will affect the costs, benefits, features and performance of your policy. You should also review illustrations based on different combinations of base policy and Adjustable Term Insurance Rider coverage so that you can decide what combination best meets your needs. The foregoing discussion does not contain all of the terms and conditions or limitations of coverage under the policy or the Adjustable Term Insurance Rider, and you should read them carefully to fully understand their benefits and limitations.

Guaranteed Minimum Accumulation Benefit Rider. The Guaranteed Minimum Accumulation Benefit Rider provides a guarantee that at the end of the guarantee period your policy value will not be less than the minimum accumulation value, provided:

- Your net policy value is allocated to at least five investment options with no more than 35% invested in any one investment option; or
- At least 65% of your net policy value is allocated to one or more of the ING LifeStyle portfolios.

The guarantee period is 20 years from the policy date. The guaranteed minimum accumulation value is equal to the sum of all premium payments we have received minus all partial withdrawals you have taken and all fees and charges we have deducted from your policy value (or that may have been waived under the provisions of your policy or another rider), accrued at an annual interest rate that may vary by policy year. The rate is currently 3.00% for all policy years.

At the end of the guarantee period we will compare your policy value with the minimum accumulation value. If the policy value is greater, then there will be no adjustment to your policy value and this rider will terminate. If the minimum accumulation value is greater, then we will increase your policy value by allocating an amount equal to the difference between the policy value and the minimum accumulation value among the various investment options in which your policy value is allocated, on a pro rata basis taking into account any outstanding loan account value.

Each month during the guarantee period we deduct a charge for this rider. **See the Optional Rider Fees and Charges table beginning on page 10.** The amount of this charge will be determined by multiplying minimum accumulation value by the amount shown in your policy. The current amount of this charge is 0.09583% on a monthly basis (1.15% on an annual basis).

You should consider the following when deciding whether to add the Guaranteed Minimum Accumulation Benefit Rider to your policy:

- You may add this rider only when you apply for the base policy;
- There is currently only one guarantee period available: 20 years;
- The guarantee period is measured from the policy date;
- Transfers between investment options that are made in response to our notice to you that your policy is not sufficiently diversified will not count as transfers for purposes of any limits or restrictions on transfers that we may impose (**see Transfers, page 58**);
- This rider may not be available for certain risk classes;
- You may terminate this rider at any time during the guarantee period upon written notice to us;
- If this rider terminates, it cannot be reinstated.

We will notify you if on any monthly processing date your policy is not sufficiently diversified. This notice will explain the diversification requirement. If you do not sufficiently diversify your policy within 61 days from the monthly processing date on which your policy was not sufficiently diversified, this rider will terminate.

Lifetime Death Benefit Guarantee Rider. The Lifetime Death Benefit Guarantee Rider provides a guarantee that your policy and any Adjustable Term Insurance Rider will not lapse during your lifetime provided:

- Your cumulative premium payments minus any partial withdrawals and any outstanding loan amount and accrued loan interest are at least equal to the sum of the lifetime death benefit guarantee premium payments to the next monthly processing date; and
- Your net policy value meets one of the following diversification requirements:
 - ▷ Your net policy value is allocated to at least five investment options with no more than 35% invested in any one investment option; or
 - ▷ At least 65% of your net policy value is allocated to one or more of the ING LifeStyle portfolios.

Each month during the guarantee period we deduct a charge for this rider based on a rate that varies depending on the issue age of the insured person. **See the Optional Rider Fees and Charges table beginning on page 10.** The amount of this charge will be determined by dividing the amount of guaranteed coverage by 1,000 and multiplying the result by the rate set forth in your policy. The amount of guaranteed coverage equals the amount of your total insurance coverage minus your policy value.

You should consider the following when deciding whether to add the Lifetime Death Benefit Guarantee Rider to your policy:

- This rider is available for issue ages 25-75;
- You may add this rider only when you apply for the base policy;
- The lifetime death benefit guarantee period begins on the policy date;
- The minimum premium required to keep this rider in effect will be set forth in your policy and will be based on monthly rates that vary according to the insured person's gender, risk class, age, underwriting type and death benefit option selected;
- If your policy benefits change, minimum premium for this rider will also change;
- Transfers between investment options that are made in response to our notice to you that your policy is not sufficiently diversified will not count as transfers for purposes of any limits or restrictions on transfers that we may impose (**see Transfers, page 58**);
- This rider covers only your base policy and Adjustable Term Insurance Rider, if any. If your policy and any Adjustable Term Insurance Rider are kept in force because of this rider, coverage under all other riders may terminate;
- This rider cannot be added to a policy with death benefit Option 3 or the 20-year Death Benefit Guarantee Rider;
- You may terminate this rider at any time during the guarantee period upon written notice to us;
- A loan may cause the termination of this guarantee because we deduct your loan amount plus accrued interest from cumulative premiums paid when calculating whether you have paid sufficient premiums to keep the guarantee in effect; and
- Even if this rider terminates, your policy will not necessarily lapse (**see Lapse, page 66**).

We will notify you if on any monthly processing date you have not paid enough premium to keep this rider in force or your policy is not sufficiently diversified. This notice will show the amount of premium required to maintain this rider guarantee and, if applicable, explain the diversification requirement. If we do not receive the required premium payment or you do not adequately diversify your policy by the second monthly processing date following the notice, this rider will terminate. If this rider terminates, it cannot be reinstated.

Waiver of Cost of Insurance Rider. If the insured person becomes totally disabled while your policy is in force, this rider provides that we waive the periodic fees and charges and rider charges during the disability period. The insured person must be no less than age 10 and no more than age 55. **See the Optional Rider Fees and Charges table beginning on page 10 for the minimum rates, maximum rates and the rates for a representative insured person.** The cost of this rider is included as part of the monthly cost of insurance charge.

If you add this rider to your policy, you may not add the Waiver of Specified Premium Rider. This rider is not available if your policy is issued based on guaranteed issue underwriting.

Waiver of Specified Premium Rider. If the insured person becomes totally disabled while your policy is in force, this rider provides that after a waiting period, we credit a specified premium amount monthly to your policy during the disability period. Subject to our underwriting, you specify this amount on the application for the policy. The insured person must be no less than age 10 and no more than age 55. The minimum coverage under this rider is \$25 per month. **See the Optional Rider Fees and Charges table beginning on page 10 for the minimum rates, maximum rates and the rates for a representative insured person.**

A policy may contain either the Waiver of Cost of Insurance Rider or the Waiver of Specified Premium Rider, but not both.

Automatic Rider Benefits

The following rider benefits may come with your policy automatically.

Accelerated Benefit Rider. Under certain circumstances, the Accelerated Benefit Rider allows you to accelerate payment of a portion of the eligible death benefit that we otherwise would pay upon the insured person's death.

Generally, we will provide an accelerated benefit under this rider if the insured person has one or more of the following:

- A non-correctable illness or physical condition that, with a reasonable degree of medical certainty, will result in the death of the insured person in less than 12 months from the date of receipt of certification by a physician;
- A medical condition that has required or requires extraordinary medical intervention without which the insured person would die. Such conditions may include, but are not limited to:
 - ▷ A major organ transplant; and
 - ▷ Continuous artificial life support.
- A medical condition that usually requires continuous confinement in an eligible institution and in which the insured person is expected to remain for the rest of his or her life; or
- A medical condition that would, in the absence of extensive or extraordinary medical treatment, result in a drastically limited life span. Such conditions may include, but are not limited to:
 - ▷ Coronary artery disease resulting in an acute infarction or requiring surgery;
 - ▷ Permanent neurological deficit resulting from cerebral vascular accident; or
 - ▷ End stage renal failure.

Before we will pay an accelerated benefit under this rider we will require certification by a licensed physician that the insured person meets one or more of these conditions.

The maximum accelerated benefit available under this rider is the lesser of 50% of the eligible death benefit that would be payable at the death of the insured person or \$1 million. The minimum available accelerated benefit is \$10,000.

Consider the following when deciding whether to accelerate the death benefit under this rider:

- Only one accelerated benefit may be paid per policy to which this rider is attached;
- We assess an administrative charge of up to \$300 when we pay the accelerated benefit (**see Transaction Fees and Charges table, page 8**);
- The accelerated benefit will first be used to repay any outstanding policy loans and accrued loan interest due. The remainder of the accelerated benefit (less the administrative charge) will be paid to you;
- Accelerating the death benefit will not affect the amount of premium payable on the policy nor the cost of insurance or other charges due under the policy;

- The accelerated benefit requested plus any amounts we pay to keep the policy in force plus interest as described below will be a lien against the policy and any additional term insurance rider benefits that are part of the eligible death benefit. When there is a lien against your policy:
 - ▷ The amount payable at the death of the insured under your policy and any additional term insurance rider benefits that are part of the eligible death benefit will be reduced by the amount of the lien;
 - ▷ Your access to the value of your policy, if any, through surrender, withdrawal, or loan will be limited to the excess of the value of your policy over the amount of the lien;
 - ▷ You may not make any changes to your policy that would reduce the proceeds payable at death without written permission from us. We reserve the right to require you to repay all or part of the lien before you make any changes to your policy;
 - ▷ Any premiums or other payments required under the terms of the policy will continue to be due and payable and will be based upon the pre-accelerated benefit amount;
 - ▷ Any payments required to keep the policy in force (not including scheduled premiums, minimum monthly premiums, or any other amount the payment of which will insure that the policy will not lapse notwithstanding the fact that the policy's value is zero or less) that are not paid by you will be paid by us, and the amount of any such payments will be added to the amount of the lien; and
 - ▷ Interest on the amount of the lien accrues daily and is added to the amount of the lien. The maximum interest rate used will not be more than the greater of the current yield on 90 day treasury bills or the current maximum statutory adjustable policy loan interest rate; and
- There may be tax consequences to requesting payment under this rider, and you should consult with a qualified tax adviser for further information. **See Accelerated Benefit Rider, page 72.**

Certain conditions, limitations, and restrictions on your receipt of an accelerated benefit payment under this rider are described in the rider. Additionally, the benefit may vary by state. You should consult your agent/registered representative as to whether and to what extent the rider is available in your particular state and on any particular policy.

Overloan Lapse Protection Rider. The Overloan Lapse Protection Rider is a benefit which guarantees that your policy will not lapse even if your surrender value or net policy value, as applicable, is not enough to pay the periodic fees and charges when due. This rider may help you keep your policy in force and avoid tax consequences resulting from your policy lapsing with a loan outstanding. **See *Distributions Other than Death Benefits*, page 70.**

You may exercise this rider by written request if all of the following conditions are met:

- You elected to have your policy meet the requirements of the guideline premium test (**see Death Benefit Qualification Tests, page 38**);
- At least 15 years have elapsed since your policy date;
- You are at least age 75;
- Your loan account value is equal to or greater than the amount of your base insurance coverage (or total insurance coverage, if greater);
- Your loan account value less any unearned loan interest does not exceed your policy value less the transaction charge for this rider (**see Loan Account Value, page 56; see also Loan Interest, page 56**);
- Exercise of this rider does not cause your policy to become a modified endowment contract under Section 7702A of the Internal Revenue Code (**see Modified Endowment Contracts, page 70**); and
- Exercise of this rider does not cause your policy to violate the statutory premium limits allowed under the guideline premium test (**see Guideline Premium Test, page 38**).

We will notify you if you meet all of these conditions and explain the consequences of choosing to exercise this rider.

You should consider the following consequences when deciding whether to exercise the Overloan Lapse Protection Rider:

- On the monthly processing date on or next following the date we receive your request to exercise this rider:
 - ▷ We will assess a one time transaction charge. This charge equals 3.50% of your policy value (**see Transaction Fees and Charges table, page 8**);
 - ▷ If another death benefit option is in effect, the death benefit option will automatically be changed to death benefit Option 1 (**see Death Benefit Options, page 39**);
 - ▷ The amount of insurance coverage after exercise of this rider will equal your policy value (less the transaction charge) multiplied by the appropriate guideline premium test factor described in Appendix A;
 - ▷ Amounts allocated to the subaccounts of the variable account will be transferred to the fixed account; and
 - ▷ All other benefit riders will be terminated.
- Insurance coverage under your policy will continue in force, subject to the following limitations and restrictions:
 - ▷ We will continue to deduct monthly periodic fees and charges (other than the Mortality and Expense Risk charge which will no longer apply);
 - ▷ You may not make any further premium payments;
 - ▷ Any unpaid loan interest will be added to your loan account balance;
 - ▷ You may not make any future transfers from the fixed account to the subaccounts of the variable account;
 - ▷ You may not add any additional benefits by rider in the future; and
 - ▷ You may not increase or decrease the amount of insurance coverage, change the death benefit option or make any partial withdrawals.

This rider may not be available in all states. You should consult your agent/registered representative as to whether and to what extent the rider is available in your particular state.

Policy Value

Your policy value equals the sum of your fixed account, variable account and loan account values. Your policy value reflects:

- The net premium applied to your policy;
- Any rider benefits applied to your policy;
- The fees and charges that we deduct;
- Any partial withdrawals you take;
- Interest earned on amounts allocated to the fixed account;
- The investment performance of the funds underlying the subaccounts of the variable account; and
- Interest earned on amounts held in the loan account.

Fixed Account Value

Your fixed account value equals the net premium you allocate to the fixed account, plus any rider benefits allocated to the fixed account, plus interest earned, minus amounts you transfer out or withdraw. It may be reduced by fees and charges assessed against your policy value. **See The Fixed Account, page 21.**

Variable Account Value

Your variable account value equals your policy value attributable to amounts invested in the subaccounts of the variable account.

In the policy the “policy value” is referred to as the “Account Value”; the “fixed account value” is referred to as the “Account Value of the Guaranteed Interest Division”; the “variable account value” is referred to as the “Account Value of the Subaccounts of the Separate Account”; and the “loan account value” is referred to as the “Value of the Loan Division.”

Determining Values in the Subaccounts. The value of the amount invested in each subaccount is measured by accumulation units and accumulation unit values. The value of each subaccount is the accumulation unit value for that subaccount multiplied by the number of accumulation units you own in that subaccount. Each subaccount has a different accumulation unit value.

The accumulation unit value is the value determined on each valuation date. The accumulation unit value of each subaccount varies with the investment performance of its underlying fund. It reflects:

- Investment income;
- Realized and unrealized gains and losses;
- Fund expenses (including fund redemption fees, if applicable); and
- Taxes, if any.

A valuation date is a date on which a fund values its shares and the New York Stock Exchange is open for business, except for days on which valuations are suspended by the SEC. Each valuation date ends at 4:00 p.m. Eastern time. We reserve the right to revise the definition of valuation date as needed in accordance with applicable federal securities laws and regulations.

You purchase accumulation units when you allocate premium or make transfers to a subaccount (including transfers from the loan account) and when rider benefits are allocated to a subaccount.

We redeem accumulation units:

- When amounts are transferred from a subaccount (including transfers to the loan account);
- For the monthly deduction of the periodic fees and charges from your policy value;
- For policy transaction fees (including fund redemption fees, if any);
- When you take a partial withdrawal;
- If you surrender your policy; and
- To pay the death benefit proceeds.

To calculate the number of accumulation units purchased or sold we divide the dollar amount of your transaction by the accumulation unit value for the subaccount calculated at the close of business on the valuation date of the transaction.

The date of a transaction is the date we receive your premium or transaction request at our Customer Service Center in good order, so long as the date of receipt is a valuation date. We use the accumulation unit value that is next calculated after we receive your premium or transaction request and we use the number of accumulation units attributable to your policy on the date of receipt.

We deduct the periodic fees and charges each month from your policy value on the monthly processing date. If your monthly processing date is not a valuation date, the monthly deduction is processed on the next valuation date.

The value of amounts allocated to the subaccounts goes up or down depending on investment performance of the corresponding funds. **There is no guaranteed minimum value of amounts invested in the subaccounts of the variable account.**

How We Calculate Accumulation Unit Values. We determine the accumulation unit value for each subaccount on each valuation date.

We generally set the accumulation unit value for a subaccount at \$10 when the subaccount is first opened. After that, the accumulation unit value on any valuation date is:

- The accumulation unit value for the preceding valuation date, multiplied by;
- The subaccount's accumulation experience factor for the valuation period.

Every valuation period begins at 4:00 p.m. Eastern time on a valuation date and ends at 4:00 p.m. Eastern time on the next valuation date. We reserve the right to revise the definition of valuation period as needed in accordance with applicable federal securities laws and regulations.

We calculate an accumulation experience factor for each subaccount every valuation date as follows:

- We take the net asset value of the underlying fund shares as reported to us by the fund managers as of the close of business on that valuation date;
- We add dividends or capital gain distributions declared and reinvested by the fund during the current valuation period;
- We subtract a charge for taxes, if applicable; and
- We divide the resulting amount by the net asset value of the shares of the underlying fund at the close of business on the previous valuation date.

Loan Account Value

When you take a loan from your policy we transfer an amount equal to your loan to the loan account as collateral for your loan. The loan account is part of our general account and we credit interest to the amount held in the loan account. Your loan account value is equal to your outstanding loan amount plus accrued interest in the loan account. **See Loans, page 56.**

In the policy the “loan account” is referred to as the “Loan Division.”

Special Features and Benefits

Loans

You may borrow money from us at any time after the first policy month, by using your policy as collateral for the loan. Unless state law requires otherwise, a new loan amount must be at least \$100 and the maximum amount you may borrow is limited to the surrender value of your policy minus the monthly periodic fees and charges to your next policy anniversary or the monthly periodic fees and charges for the next thirteen months if you take a loan within thirty days before your next policy anniversary.

Your loan request must be directed to our Customer Service Center. When you request a loan you may specify the investment options from which the loan collateral will be taken. If you do not specify the investment options, the loan collateral will be taken proportionately from each active investment option you have, including the fixed account.

If you request an additional loan, we add the new loan amount to your existing loan. This way, there is only one loan outstanding on your policy at any time.

Loan Interest. We credit amounts held in the loan account with interest at an annual rate of 3.00%. Interest that we credit to the loan account becomes part of your loan account value until the next policy anniversary when it is transferred to the investment options according to your most recent allocation instructions.

We also charge interest on loans you take. The annual interest rate charged is 3.75% in policy years one through five and currently 3.00% in all years thereafter (guaranteed not to exceed 3.15%). Loans with this reduced interest rate are called preferred loans. Interest accrues daily but is due in arrears on each policy anniversary. If you do not pay the interest when it is due, we add it to your loan amount.

Loan Repayment. You may repay your loan at any time. We assume that payments you make, other than scheduled premium payments, are loan repayments. You must tell us if you want unscheduled payments to be premium payments.

When you make a loan repayment, we transfer an amount equal to your payment from the loan account to the subaccounts and fixed account in the same proportion as your current premium allocation, unless you tell us otherwise.

Effects of a Loan. Using your policy as collateral for a loan will affect your policy in various ways. You should carefully consider the following before taking a loan:

- If you do not make loan repayments your policy could lapse if your loan amount and accrued loan interest is greater than your policy value, less any surrender charges;
- A loan may cause the termination of the death benefit guarantees because we deduct your loan amount and accrued loan interest from cumulative premiums paid when calculating whether you have paid sufficient premiums to keep the death benefit guarantees in effect;
- Taking a loan reduces your opportunity to participate in the investment performance of the subaccounts and the interest guarantees of the fixed account;
- Accruing loan interest will change your policy value as compared to what it would have been if you did not take a loan;
- Even if you repay your loan, it will have a permanent effect on your policy value;
- If you use the continuation of coverage feature and you have a loan, loan interest continues to accrue and could cause your policy to lapse;
- If you do not repay your loan we will deduct any outstanding loan amount and accrued loan interest from amounts payable under the policy; and
- Loans may have tax consequences and if your policy lapses with a loan outstanding, you may have further tax consequences. **See *Distributions Other than Death Benefits*, page 70.**

Transfers

You currently may make an unlimited number of transfers of your variable account value between the subaccounts and to the fixed account. Transfers are subject to any conditions, limits or charges (including redemption fees) that we or the funds whose shares are involved may impose, including:

- If your state requires a refund of premium during the free look period, you may not make transfers until after your free look period ends;
- The minimum amount you may transfer is \$100;
- If the amount remaining in the investment option after a transfer will be less than \$100, we will transfer the entire amount; and
- We may limit the number of transfers or restrict or refuse transfers because of frequent or disruptive transfers, as described below.

Any conditions or limits we impose on transfers between the subaccounts or to the fixed account will generally apply equally to all policy owners. However, we may impose different conditions or limits on policy owners or third parties acting on behalf of policy owners, such as market timing services, who violate our excessive trading policy. **See Limits on Frequent and Disruptive Transfers, page 60.**

One transfer from the fixed account to the subaccounts of the variable account may be made only within 30 days of each policy anniversary. This transfer is limited to the greater of:

- 25% of your fixed account value at the time of the first such transfer in a policy year;
- The sum of the amounts transferred and withdrawn from the fixed account during the prior policy year; or
- \$100.

We reserve the right to liberalize these restrictions on transfers from the fixed account, depending on market conditions. Any such liberalization will generally apply equally to all policy owners. However, we may impose different restrictions on third parties acting on behalf of policy owners, such as market timing services.

We process all transfers and determine all values in connection with transfers on the valuation date we receive your request in good order, except as described below for the dollar cost averaging or automatic rebalancing programs.

Dollar Cost Averaging. Anytime you have at least \$10,000 invested in a subaccount that invests in the ING Limited Maturity Bond Portfolio or the ING Liquid Assets Portfolio (the “source subaccount”), you may elect dollar cost averaging. There is no charge for this feature.

Dollar cost averaging is a long-term investment program through which you direct us to automatically transfer at regular intervals a specific dollar amount or percentage of subaccount value from the source subaccount to one or more of the other subaccounts. We do not permit transfers to the fixed account or the loan account under this program. You may request that the dollar cost averaging transfers occur on a monthly, quarterly, semi-annual or annual basis.

This systematic plan of transferring policy values is intended to help reduce the risk of investing too much when the price of a fund's shares is high. It also helps reduce the risk of investing too little when the price of a fund's shares is low. Because you transfer the same dollar amount to the subaccounts each period, you purchase more units when the unit value is low and you purchase fewer units when the unit value is high.

You may add dollar cost averaging to your policy at any time. The first dollar cost averaging date must be at least one day after we receive your dollar cost averaging request. If your state requires a refund of all premium received during the free look period, dollar cost averaging begins after the end of your free look period.

You may have both dollar cost averaging and automatic rebalancing at the same time. However, your dollar cost averaging source subaccount cannot be included in your automatic rebalancing program.

Dollar cost averaging does not assure a profit nor does it protect you against a loss in a declining market.

You may discontinue your dollar cost averaging program at any time. We reserve the right to discontinue, modify or suspend this program, and dollar cost averaging will automatically terminate on:

- The date you specify;
- The date your balance in the source subaccount reaches a dollar amount you set;
- The date your balance in the source subaccount is equal to or less than the amount to be transferred. In this situation we will transfer the entire balance of the source subaccount to the other subaccounts you have selected; or
- Any date when dollar cost averaging transfers are scheduled and the policy is in the grace period.

Automatic Rebalancing. Automatic rebalancing is a program for simplifying the process of asset allocation and maintaining a consistent allocation of your variable and fixed account values among your chosen investment options. There is no charge for this feature.

If you elect automatic rebalancing, we periodically transfer amounts among the investment options to match the asset allocation percentages you have chosen. This action rebalances the amounts in the investment options that do not match your set allocation percentages. This mismatch can happen if an investment option outperforms another investment option over the time period between automatic rebalancing transfers.

Automatic rebalancing may occur on the same day of the month on a monthly, quarterly, semi-annual or annual basis. If you do not specify a frequency, automatic rebalancing will occur quarterly.

The first transfer occurs on the date you select (after your free look period if your state requires return of premium during the free look period). If you do not request a date, processing is on the last valuation date of the calendar quarter in which we receive your request in good order.

You may have both automatic rebalancing and dollar cost averaging at the same time. However, the source subaccount for your dollar cost averaging program cannot be included in your automatic rebalancing program. You may not include the loan account.

Automatic rebalancing does not assure a profit nor does it protect you against a loss in a declining market.

You may change your allocation percentages for automatic rebalancing at any time. Your allocation change is effective on the valuation date that we receive it in good order at our Customer Service Center. If you reduce the amount allocated to the fixed account, it is considered a transfer from that account. You must meet the requirements for the maximum transfer amount and time limitations on transfers from the fixed account.

If you have a death benefit guarantee and you ask for an automatic rebalancing allocation that does not meet the death benefit guarantee diversification requirements, we will notify you and ask you for revised instructions. If you have a death benefit guarantee and you terminate automatic rebalancing, you still must meet the diversification requirements for the guarantee period to continue. **See Death Benefit Guarantees, page 41.**

You may discontinue your automatic rebalancing program at any time. We reserve the right to discontinue, modify or suspend this program, and automatic rebalancing will automatically terminate if the policy is in the grace period on any date when automatic rebalancing transfers are scheduled.

Limits on Frequent or Disruptive Transfers

The policy is not designed to serve as a vehicle for frequent transfers. Frequent transfer activity can disrupt management of a fund and raise its expenses through:

- Increased trading and transaction costs;
- Forced and unplanned portfolio turnover;
- Lost opportunity costs; and
- Large asset swings that decrease the fund's ability to provide maximum investment return to all policy owners.

This in turn can have an adverse effect on fund performance. **Accordingly, individuals or organizations that use market-timing investment strategies or make frequent transfers should not purchase the policy.**

Excessive Trading Policy. We and the other members of the ING family of companies that provide multi-fund variable insurance and retirement products have adopted a common Excessive Trading Policy to respond to the demands of the various fund families that make their funds available through our products to restrict excessive fund trading activity and to ensure compliance with Rule 22c-2 of the 1940 Act.

We actively monitor fund transfer and reallocation activity within our variable insurance products to identify violations of our Excessive Trading Policy. Our Excessive Trading Policy is violated if fund transfer and reallocation activity:

- Meets or exceeds our current definition of Excessive Trading, as defined below; or
- Is determined, in our sole discretion, to be disruptive or not in the best interests of other owners of our variable insurance and retirement products.

We currently define Excessive Trading as:

- More than one purchase and sale of the same fund (including money market funds) within a 60 calendar day period (hereinafter, a purchase and sale of the same fund is referred to as a “round-trip”). This means two or more round-trips involving the same fund within a 60 calendar day period would meet our definition of Excessive Trading; or
- Six round-trips involving the same fund within a rolling twelve month period.

The following transactions are excluded when determining whether trading activity is excessive:

- Purchases or sales of shares related to non-fund transfers (for example, new purchase payments, withdrawals and loans);
- Transfers associated with scheduled dollar cost averaging, scheduled rebalancing or scheduled asset allocation programs;
- Purchases and sales of fund shares in the amount of \$5,000 or less;
- Purchases and sales of funds that affirmatively permit short-term trading in their fund shares, and movement between such funds and a money market fund; and
- Transactions initiated by us, another member of the ING family of companies or a fund.

If we determine that an individual or entity has made a purchase of a fund within 60 days of a prior round-trip involving the same fund, we will send them a letter warning that another sale of that same fund within 60 days of the beginning of the prior round-trip will be deemed to be Excessive Trading and result in a six month suspension of their ability to initiate fund transfers or reallocations through the Internet, facsimile, Voice Response Unit (VRU), telephone calls to the ING Customer Service Center or other electronic trading medium that we may make available from time to time (“Electronic Trading Privileges”). Likewise, if we determine that an individual or entity has made five round-trips involving the same fund within a rolling twelve month period, we will send them a letter warning that another purchase and sale of that same fund within twelve months of the initial purchase in the first round-trip will be deemed to be Excessive Trading and result in a suspension of their Electronic Trading Privileges. According to the needs of the various business units, a copy of any warning letters may also be sent, as applicable, to the person(s) or entity authorized to initiate fund transfers or reallocations, the agent/registered representative or the investment adviser for that individual or entity. A copy of the warning letters and details of the individual’s or entity’s trading activity may also be sent to the fund whose shares were involved in the trading activity.

If we determine that an individual or entity has violated our Excessive Trading Policy, we will send them a letter stating that their Electronic Trading Privileges have been suspended for a period of six months. Consequently, all fund transfers or reallocations, not just those that involve the fund whose shares were involved in the activity that violated our Excessive Trading Policy, will then have to be initiated by providing written instructions to us via regular U.S. mail. Suspension of Electronic Trading Privileges may also extend to products other than the product through which the Excessive Trading activity occurred. During the six month suspension period, electronic “inquiry only” privileges will be permitted where and when possible. A copy of the letter restricting future transfer and reallocation activity to regular U.S. mail and details of the individual’s or entity’s trading activity may also be sent, as applicable, to the person(s) or entity authorized to initiate fund transfers or reallocations, the agent/registered representative or investment adviser for that individual or entity and the fund whose shares were involved in the activity that violated our Excessive Trading Policy.

Following the six month suspension period during which no additional violations of our Excessive Trading Policy are identified, Electronic Trading Privileges may again be restored. We will continue to monitor the fund transfer and reallocation activity, and any future violations of our Excessive Trading Policy will result in an indefinite suspension of Electronic Trading Privileges. A violation of our Excessive Trading Policy during the six month suspension period will also result in an indefinite suspension of Electronic Trading Privileges.

We reserve the right to suspend Electronic Trading Privileges with respect to any individual or entity, with or without prior notice, if we determine, in our sole discretion, that the individual’s or entity’s trading activity is disruptive or not in the best interests of other owners of our variable insurance and retirement products, regardless of whether the individual’s or entity’s trading activity falls within the definition of Excessive Trading set forth above.

Our failure to send or an individual’s or entity’s failure to receive any warning letter or other notice contemplated under our Excessive Trading Policy will not prevent us from suspending that individual’s or entity’s Electronic Trading Privileges or taking any other action provided for in our Excessive Trading Policy.

We do not allow exceptions to our Excessive Trading Policy. We reserve the right to modify our Excessive Trading Policy, or the policy as it relates to a particular fund, at any time without prior notice, depending on, among other factors, the needs of the underlying fund(s), the best interests of policy owners and fund investors and/or state or federal regulatory requirements. If we modify our policy, it will be applied uniformly to all policy owners or, as applicable, to all policy owners investing in the underlying fund.

Our Excessive Trading Policy may not be completely successful in preventing market timing or excessive trading activity. If it is not completely successful, fund performance and management may be adversely affected, as noted above.

Limits Imposed by the Funds. Each underlying fund available through the variable insurance and retirement products offered by us and/or the other members of the ING family of companies, either by prospectus or stated policy, has adopted or may adopt its own excessive/frequent trading policy, and orders for the purchase of fund shares are subject to acceptance or rejection by the underlying fund. We reserve the right, without prior notice, to implement fund purchase restrictions and/or limitations on an individual or entity that the fund has identified as violating its excessive/frequent trading policy and to reject any allocation or transfer request to a subaccount if the corresponding fund will not accept the allocation or transfer for any reason. All such restrictions and/or limitations (which may include, but are not limited to, suspension of Electronic Trading Privileges and/or blocking of future purchases of a fund or all funds within a fund family) will be done in accordance with the directions we receive from the fund.

Agreements to Share Information with Fund Companies. As required by Rule 22c-2 under the 1940 Act, we have entered into information sharing agreements with each of the fund companies whose funds are offered through the policy. Policy owner trading information is shared under these agreements as necessary for the fund companies to monitor fund trading and our implementation of our Excessive Trading Policy. Under these agreements, the company is required to share information regarding policy owner transactions, including but not limited to information regarding fund transfers initiated by you. In addition to information about policy owner transactions, this information may include personal policy owner information, including names and social security numbers or other tax identification numbers.

As a result of this information sharing, a fund company may direct us to restrict a policy owner's transactions if the fund determines that the policy owner has violated the fund's excessive/frequent trading policy. This could include the fund directing us to reject any allocations of premium or policy value to the fund or all funds within the fund family.

Conversion to a Guaranteed Policy

During the first two policy years you may permanently convert your policy to a guaranteed policy, unless state law requires differently. If you elect to make this change, unless state law requires that we issue to you a new guaranteed policy, we will permanently transfer the amounts you have invested in the subaccounts of the variable account to the fixed account and allocate all future net premium to the fixed account. After you exercise this right you may not allocate future premium payments or make transfers to the subaccounts of the variable account. We do not charge for this change. Contact our Customer Service Center or your agent/registered representative for information about the conversion rights available in your state.

Partial Withdrawals

Beginning in the second policy year (or the first policy year for “in corridor” policies) you may withdraw part of your policy’s surrender value. Twelve partial withdrawals are currently allowed each policy year, and a partial withdrawal must be at least \$100. The maximum partial withdrawal you may take is the amount which leaves \$500 as your surrender value (or for in corridor policies during the first policy year, the amount that would cause your policy to no longer qualify as “in corridor”). If your withdrawal request is for more than the maximum, we will require you to surrender your policy or reduce the amount of the withdrawal.

A policy is “in corridor” if:

- Under death benefit Option 1, your policy value multiplied by the appropriate factor from the definition of life insurance factors described in Appendix A is greater than the amount of your base insurance coverage;
- Under death benefit Option 2, your policy value multiplied by the appropriate factor from the definition of life insurance factors described in Appendix A is greater than your base insurance coverage plus your policy value; or
- Under death benefit Option 3, your policy value multiplied by the appropriate factor from the definition of life insurance factors described in Appendix A is greater than your base insurance coverage plus the sum of your premium payments minus partial withdrawals.

We charge a partial withdrawal fee of \$10 for each partial withdrawal. **See Partial Withdrawal Fee, page 28.**

Unless you specify a different allocation, we will take partial withdrawals from the fixed account and the subaccounts of the variable account in the same proportion that your value in each has to your net policy value immediately before the withdrawal. We will determine these proportions at the end of the valuation period during which we receive your partial withdrawal request. However, amounts withdrawn from the fixed account may not exceed the amount of the total withdrawal multiplied by the ratio of your policy value in the fixed account to your net policy value immediately before the partial withdrawal.

Unless you request otherwise, proceeds from a partial withdrawal generally will be paid into an interest bearing account that you can access, without penalty, through a checkbook feature. **See Transaction Processing, page 78.**

Effects of a Partial Withdrawal. We will reduce your policy value by the amount of the partial withdrawal plus the partial withdrawal fee. Your policy value may also be reduced by the amount of a surrender charge if you take a partial withdrawal which decreases your base insurance coverage.

A partial withdrawal may also cause the termination of the death benefit guarantee because we deduct the amount of the partial withdrawal from the total premiums paid when calculating whether you have paid sufficient premiums in order to maintain the death benefit guarantee.

The amount of your base insurance coverage is not reduced by the amount of a partial withdrawal when the base death benefit has been increased to qualify your policy as life insurance under the Internal Revenue Code and the amount withdrawn is not greater than that which reduces your policy value to the level which no longer requires that the base death benefit be increased for Internal Revenue Code purposes. Otherwise, depending upon the death benefit option in effect, a partial withdrawal may reduce the amount of your base insurance coverage.

Under death benefit Option 1, a partial withdrawal will reduce the amount of your base insurance coverage by the amount of the partial withdrawal.

Under death benefit Option 2, a partial withdrawal will not reduce the amount of your base insurance coverage.

Under death benefit Option 3, a partial withdrawal will reduce the amount of your base insurance coverage by the amount of a partial withdrawal in excess of the total premium we have received from you minus the sum of all your prior partial withdrawals.

If a partial withdrawal reduces the amount of base insurance coverage, the total amount of insurance coverage will also be reduced for the current year and all future years by an equal amount. Therefore, a partial withdrawal can affect the amount of pure insurance protection under the policy.

We will not allow a partial withdrawal if the amount of base insurance coverage after the withdrawal would be less than \$50,000.

A reduction in the amount of base insurance coverage as a result of a partial withdrawal will be pro-rated among the existing coverage segments, unless state law requires otherwise.

A partial withdrawal may have adverse tax consequences depending on the circumstances. **See *Tax Status of the Policy*, page 68.**

Termination of Coverage

Your insurance coverage will continue under the policy until you surrender your policy or it lapses.

Surrender

You may surrender your policy for its surrender value at any time after the free look period while the insured person is alive. Your surrender value is your policy value minus any surrender charge and any outstanding loan amount and accrued loan interest.

You may take your surrender value in other than one payment.

We compute your surrender value as of the valuation date we receive your written surrender request in good order and policy at our Customer Service Center. All insurance coverage ends on the date we receive your surrender request and policy.

Unless you request otherwise, we will deposit your surrender value into an interest bearing account that you can access, without penalty, through a checkbook feature. **See Transaction Processing, page 78.**

If you surrender your policy we may deduct a surrender charge. **See Surrender Charge, page 29.** Surrender of your policy may have adverse tax consequences. **See Distributions Other than Death Benefits, page 70.**

Lapse

Your policy will not lapse and your insurance coverage under the policy will continue if on any monthly processing date:

- A death benefit guarantee is in effect;
- Your net policy value is enough to pay the periodic fees and charges when due; or
- During the continuation of coverage period, your policy value exceeds your outstanding loan amount plus accrued loan interest.

Grace Period. If on a monthly processing date you do not meet any of these conditions, your policy will enter the 61-day grace period during which you must make a sufficient premium payment to avoid having your policy lapse and insurance coverage terminate.

We will notify you that your policy is in a grace period at least 30 days before it ends. We will send this notice to you (and a person to whom you have assigned your policy) at your last known address in our records. We will notify you of the premium payment necessary to prevent your policy from lapsing. This amount generally equals the past due charges, plus the estimated periodic fees and charges, and charges of any optional rider benefits for the next two months. If we receive payment of the required amount before the end of the grace period, we apply it to your policy in the same manner as your other premium payments, and then we deduct the overdue amounts from your policy value.

If you do not pay the full amount within the 61-day grace period, your policy and its riders lapse without value. We withdraw your remaining variable and fixed account values, deduct amounts you owe us and inform you that your coverage has ended.

If the insured person dies during the grace period we pay death benefit proceeds to your beneficiaries with reductions for your outstanding loan amount, accrued loan interest and periodic fees and charges owed.

During the early policy years your net policy value may not be enough to cover the periodic fees and charges due each month, and you may need to pay sufficient premium to keep the death benefit guarantee in force. **See Premium Payments, page 24.**

If your policy lapses, any distribution of policy value may be subject to current taxation. See *Distributions Other than Death Benefits*, page 70.

Reinstatement

Reinstatement means putting a lapsed policy back in force. You may reinstate a lapsed policy and its riders (other than a death benefit guarantee rider or the Guaranteed Minimum Accumulation Benefit Rider) by written request any time within five years after it has lapsed. A policy that was surrendered may not be reinstated.

To reinstate the policy and available riders, you must submit evidence of insurability satisfactory to us and pay a premium large enough to keep the policy and any rider benefits in force during the grace period and for at least two months after reinstatement. When we reinstate your policy, we reinstate the surrender charges for the amount and time remaining as if your coverage had not lapsed. If you had a loan existing when coverage lapsed, we will reinstate it with accrued loan interest to the date of reinstatement unless directed otherwise.

A policy that lapses during a seven pay testing period and is reinstated more than 90 days after lapsing may be classified as a modified endowment contract for tax purposes. In general, a seven pay testing period is the first seven policy years and the first seven years after certain changes to your policy. You should consult with a qualified tax adviser to determine whether reinstating a lapsed policy will cause it to be classified as a modified endowment contract. See *Modified Endowment Contracts*, page 70.

TAX CONSIDERATIONS

The following summary provides a general description of the federal income tax considerations associated with the policy and does not purport to be complete or to cover federal estate, gift and generation-skipping tax implications, state and local taxes or other tax situations. This discussion is not intended as tax advice. Counsel or other qualified tax advisers should be consulted for more complete information. This discussion is based upon our understanding of the present federal income tax laws. No representation is made as to the likelihood of continuation of the present federal income tax laws or as to how they may be interpreted by the Internal Revenue Service (“IRS”).

The following discussion generally assumes that the policy will qualify as a life insurance contract for federal tax purposes.

Tax Status of the Company

We are taxed as a life insurance company under the Internal Revenue Code. The variable account is not a separate entity from us. Therefore, it is not taxed separately as a “regulated investment company,” but is taxed as part of the company. We automatically apply investment income and capital gains attributable to the separate account to increase reserves under the policy. Because of this, under existing federal tax law we believe that any such income and gains will not be taxed to us. In addition, any foreign tax credits attributable to the separate account will first be used to reduce any income taxes imposed on the variable account before being used by the company.

In summary, we do not expect that we will incur any federal income tax liability attributable to the variable account and we do not intend to make provisions for any such taxes. However, if changes in the federal tax laws or their interpretation result in our being taxed on income or gains attributable to the variable account, then we may impose a charge against the variable account (with respect to some or all of the policies) to set aside provisions to pay such taxes.

Tax Status of the Policy

This policy is designed to qualify as a life insurance contract under the Internal Revenue Code. All terms and provisions of the policy shall be construed in a manner that is consistent with that design. In order to qualify as a life insurance contract for federal income tax purposes and to receive the tax treatment normally accorded life insurance contracts under federal tax law, a policy must satisfy certain requirements that are set forth in Section 7702 of the Internal Revenue Code. Specifically, the policy must meet the requirements of either the cash value accumulation test or the guideline premium test. **See Death Benefit Qualification Tests, page 38.** If your variable life policy does not satisfy one of these two alternate tests, it will not be treated as life insurance under Internal Revenue Code 7702. You would then be subject to federal income tax on your policy income as you earn it. While there is very little guidance as to how these requirements are applied, we believe it is reasonable to conclude that our policies satisfy the applicable requirements. If it is subsequently determined that a policy does not satisfy the applicable requirements, we will take appropriate and reasonable steps to bring the policy into compliance with such requirements and we reserve the right to restrict policy transactions or modify your policy in order to do so. **See Tax Treatment of Policy Death Benefits, page 69.** If we return premium in order to bring your policy into compliance with the requirements of Section 7702, it will be refunded on a last-in, first-out basis and be taken from the investment options in which your policy value is allocated on a pro rata basis.

Diversification and Investor Control Requirements

In addition to meeting the Internal Revenue Code Section 7702 tests, Internal Revenue Code Section 817(h) requires investments within a separate account, such as our variable account, to be adequately diversified. The Treasury has issued regulations that set the standards for measuring the adequacy of any diversification, and the Internal Revenue Service has published various revenue rulings and private letter rulings addressing diversification issues. To be adequately diversified, each subaccount and its corresponding fund must meet certain tests. If these tests are not met your variable life policy will not be adequately diversified and not treated as life insurance under Internal Revenue Code Section 7702. You would then be subject to federal income tax on your policy income as you earn it. Each subaccount's corresponding fund has represented that it will meet the diversification standards that apply to your policy. Accordingly, we believe it is reasonable to conclude that the diversification requirements have been satisfied. If it is determined, however, that your variable life policy does not satisfy the applicable diversification regulations and rulings because a subaccount's corresponding fund fails to be adequately diversified for whatever reason, we will take appropriate and reasonable steps to bring your policy into compliance with such regulations and rulings and we reserve the right to modify your policy as necessary in order to do so.

In certain circumstances, owners of a variable life insurance policy have been considered, for federal income tax purposes, to be the owners of the assets of the separate account supporting their policies, due to their ability to exercise investment control over such assets. When this is the case, the policy owners have been currently taxed on income and gains attributable to the separate account assets. Your ownership rights under your policy are similar to, but different in some ways from those described by the IRS in rulings in which it determined that policy owners are not owners of separate account assets. For example, you have additional flexibility in allocating your premium payments and your policy values. These differences could result in the IRS treating you as the owner of a pro rata share of the variable account assets. We do not know what standards will be set forth in the future, if any, in Treasury regulations or rulings. We reserve the right to modify your policy, as necessary, to try to prevent you from being considered the owner of a pro rata share of the variable account assets, or to otherwise qualify your policy for favorable tax treatment.

Tax Treatment of Policy Death Benefits

The death benefit, or an accelerated death benefit, under a policy is generally excludable from the gross income of the beneficiary(ies) under Section 101(a)(1) of the Internal Revenue Code. However, there are exceptions to this general rule. Additionally, federal, state and local transfer, estate, inheritance and other tax consequences of ownership or receipt of policy proceeds depend on the circumstances of each policy owner or beneficiary(ies). A qualified tax adviser should be consulted about these consequences.

Distributions Other than Death Benefits

Generally, the policy owner will not be taxed on any of the policy value until there is a distribution. When distributions from a policy occur, or when loan amounts are taken from or secured by a policy, the tax consequences depend on whether or not the policy is a “modified endowment contract.”

Modified Endowment Contracts

Under the Internal Revenue Code, certain life insurance contracts are classified as “modified endowment contracts” and are given less favorable tax treatment than other life insurance contracts. Due to the flexibility of the policies as to premiums and benefits, the individual circumstances of each policy will determine whether or not it is classified as a modified endowment contract. The rules are too complex to be summarized here, but generally depend on the amount of premiums we receive during the first seven policy years. Certain changes in a policy after it is issued, such as reduction or increase in benefits, policy reinstatement or substitution of the insured person, could also cause it to be classified as a modified endowment contract or increase the period during which the policy must be tested. A current or prospective policy owner should consult with a qualified tax adviser to determine whether or not a policy transaction will cause the policy to be classified as a modified endowment contract.

If a policy becomes a modified endowment contract, distributions that occur during the policy year will be taxed as distributions from a modified endowment contract. In addition, distributions from a policy within two years before it becomes a modified endowment contract will be taxed in this manner. This means that a distribution made from a policy that is not a modified endowment contract could later become taxable as a distribution from a modified endowment contract.

Additionally, all modified endowment contracts that are issued by us (or our affiliates) to the same policy owner during any calendar year are treated as one modified endowment contract for purposes of determining the amount includible in the policy owner’s income when a taxable distribution occurs.

Once a policy is classified as a modified endowment contract, the following tax rules apply both prospectively and to any distributions made in the prior two years:

- All distributions other than death benefits, including distributions upon surrender and withdrawals, from a modified endowment contract will be treated first as distributions of gain, if any, taxable as ordinary income. Amounts will be treated as tax-free recovery of the policy owner’s investment in the policy only after all gain has been distributed. The amount of gain in the policy will be equal to the difference between the policy’s value, determined without regard to any surrender charges, and the investment in the policy;

- Loan amounts taken from or secured by a policy classified as a modified endowment contract, and also assignments or pledges of such a policy (or agreements to assign or pledge such a policy), are treated first as distributions of gain, if any, taxable as ordinary income. Amounts will be treated as tax-free recovery of the policy owner's investment in the policy only after all gain has been distributed; and
- A 10% additional income tax penalty may be imposed on the distribution amount subject to income tax. This tax penalty generally does not apply to distributions (a) made on or after the date on which the taxpayer attains age 59½; (b) that are attributable to the taxpayer becoming disabled (as defined in the Internal Revenue Code); or (c) that are part of a series of substantially equal periodic payments (not less frequently than annually) made for the life (or life expectancy) of the taxpayer or the joint lives (or joint life expectancies) of the taxpayer and his or her beneficiary. Consult a qualified tax adviser to determine whether or not you may be subject to this penalty tax.

If we discover that your policy has inadvertently become a modified endowment contract, we will assume that you do not want it to be classified as a modified endowment contract and attempt to fix this by refunding any excess premium with related interest. The excess gross premium will be refunded on a last-in, first-out basis and be taken from the investment options in which your policy value is allocated on a pro rata basis.

Policies That Are Not Modified Endowment Contracts

Distributions other than death benefits from a policy that is not classified as a modified endowment contract are generally treated first as a recovery of the policy owner's investment in the policy. Only after the recovery of all investment in the policy is there taxable income. However, certain distributions made in connection with policy benefit reductions during the first 15 policy years may be treated in whole or in part as ordinary income subject to tax. Consult a qualified tax adviser to determine whether or not any distributions made in connection with a reduction in policy benefits will be subject to tax.

Loan amounts from or secured by a policy that is not a modified endowment contract are generally not taxed as distributions. However, the tax consequences of such a loan that is outstanding after policy year five are uncertain and a qualified tax adviser should be consulted about such loans. Finally, neither distributions from, nor loan amounts from or secured by, a policy that is not a modified endowment contract are subject to the 10% additional income tax penalty.

Investment in the Policy

Your investment in the policy is generally the total of your aggregate premiums. When a distribution is taken from the policy, your investment in the policy is reduced by the amount of the distribution that is tax free.

Other Tax Matters

Policy Loans

In general, interest on a policy loan will not be deductible. A limited exception to this rule exists for certain interest paid in connection with certain “key person” insurance. You should consult a qualified tax adviser before taking out a loan to determine whether you qualify under this exception.

Moreover, the tax consequences associated with a preferred loan (loans where the interest rate charged is less than or equal to the interest rate credited) available in the policy are uncertain. Before taking out a policy loan, you should consult a qualified tax adviser as to the tax consequences.

If a loan from a policy is outstanding when the policy, other than a modified endowment contract, is surrendered or lapses, then the amount of the outstanding indebtedness will be added to the amount treated as a distribution from the policy and will be taxed accordingly.

Accelerated Benefit Rider

We believe that payments under the Accelerated Benefit Rider should be fully excludable from the gross income of the beneficiary if the beneficiary is the insured under the policy, or is an individual who has no business or financial connection with the insured. **(See Accelerated Benefit Rider, page 50, for more information about this rider.)** However, you should consult a qualified tax adviser about the consequences of adding this rider to a policy or requesting payment under this rider.

Continuation of a Policy

The tax consequences of continuing the policy after the insured person reaches age 100 are unclear. For example, in certain situations it is possible that after the insured person reaches age 100 the IRS could treat you as being in constructive receipt of the policy value if the policy value becomes equal to the death benefit. If this happens, an amount equal to the excess of the policy value over the investment in the policy would be includible in your income at that time. Because we believe the policy will continue to constitute life insurance at that time and the IRS has not issued any guidance on this issue, we do not intend to tax report any earnings due to the possibility of constructive receipt in this circumstance. You should consult a qualified tax adviser if you intend to keep the policy in force after the insured person reaches age 100.

Section 1035 Exchanges

Internal Revenue Code Section 1035 provides, in certain circumstances, that no gain or loss will be recognized on the exchange of one life insurance policy solely for another life insurance policy or an endowment, annuity or qualified long term care contract. We accept Section 1035 exchanges with outstanding loans. Special rules and procedures apply to Section 1035 exchanges. These rules can be complex, and if you wish to take advantage of Section 1035, you should consult your qualified tax adviser.

Tax-exempt Policy Owners

Special rules may apply to a policy that is owned by a tax-exempt entity. Tax-exempt entities should consult a qualified tax adviser regarding the consequences of purchasing and owning a policy. These consequences could include an effect on the tax-exempt status of the entity and the possibility of the unrelated business income tax.

Tax Law Changes

Although the likelihood of legislative action or tax reform is uncertain, there is always the possibility that the tax treatment of the policy could be changed by legislation or other means. It is also possible that any change may be retroactive (that is, effective before the date of the change). You should consult a qualified tax adviser with respect to legislative developments and their effect on the policy.

Policy Changes to Comply with the Law

So that your policy continues to qualify as life insurance under the Internal Revenue Code, we reserve the right to refuse to accept all or part of your premium payments or to change your death benefit. We may refuse to allow you to make partial withdrawals that would cause your policy to fail to qualify as life insurance. We also may make changes to your policy or its riders or make distributions from your policy to the degree that we deem necessary to qualify your policy as life insurance for tax purposes.

If we make any change of this type, it applies the same way to all affected policies. Any increase in your death benefit will cause an increase in your cost of insurance charges.

Policy Availability and Qualified Plans

Policy owners may use the policy in various arrangements, including:

- Certain qualified plans;
- Non-qualified deferred compensation or salary continuance plans;
- Split dollar insurance plans;
- Executive bonus plans;
- Retiree medical benefit plans; and
- Other plans.

The tax consequences of these plans may vary depending on the particular facts and circumstances of each arrangement. If you want to use your policy with any of these various arrangements, you should consult a qualified tax adviser regarding the tax issues of your particular arrangement.

Life Insurance Owned by Businesses

In recent years, Congress has adopted new rules relating to life insurance owned by businesses. For example, in the case of a policy issued to a nonnatural taxpayer, or held for the benefit of such an entity, a portion of the taxpayer's otherwise deductible interest expenses may not be deductible as a result of ownership of a policy even if no loans are taken under the policy. (An exception to this rule is provided for certain life insurance contracts that cover the life of an individual who is a 20% owner, or an officer, director, or employee of a trade or business.) In addition, in certain instances, a portion of the death benefit payable under an employer-owned policy may be taxable. As another example, special rules apply if you are subject to the alternative minimum tax. Any business contemplating the purchase of a new policy or a change in an existing policy should consult a qualified tax adviser.

Income Tax Withholding

The IRS requires us to withhold income taxes from any portion of the amounts individuals receive in a taxable transaction. We generally do not withhold income taxes if you elect in writing not to have withholding apply. If the amount withheld for you is insufficient to cover income taxes, you will have to pay additional income taxes and possibly penalties later. We will also report to the IRS the amount of any taxable distributions.

Policy Transfers

The transfer of the policy or designation of a beneficiary may have federal, state and/or local transfer and inheritance tax consequences, including the imposition of gift, estate and generation-skipping transfer taxes. The individual situation of each policy owner or beneficiary will determine the extent, if any, to which federal, state and local transfer and inheritance taxes may be imposed and how ownership or receipt of policy proceeds will be treated for purposes of federal, state and local estate, inheritance, generation skipping and other taxes.

You should consult qualified legal or tax advisers for complete information on federal, state, local and other tax considerations.

ADDITIONAL INFORMATION

General Policy Provisions

Your Policy

The policy is a contract between you and us and is the combination of:

- Your policy;
- A copy of your original application and applications for benefit increases or decreases;
- Your riders;
- Your endorsements;
- Your policy schedule pages; and
- Your reinstatement applications.

If you make a change to your coverage, we give you a copy of your changed application and new policy schedules. If you send your policy to us, we attach these items to your policy and return it to you. Otherwise, you need to attach them to your policy.

Unless there is fraud, we consider all statements made in an application to be representations and not guarantees. We use no statement to deny a claim, unless it is in an application.

A president or other officer of our company and our secretary or assistant secretary must sign all changes or amendments to your policy. No other person may change its terms or conditions.

Age

We issue your policy at the insured person's age (stated in your policy schedule) based on the nearest birthday to the policy date. On the policy date, the insured person can generally be no more than age 85 (age 70 for guaranteed and simplified issue policies).

We often use age to calculate rates, charges and values. We determine the insured person's age at a given time by adding the number of completed policy years to the age calculated at issue and shown in the schedule.

Ownership

The original owner is the person named as the owner in the policy application. The owner can exercise all rights and receive benefits during the life of the insured person. These rights include the right to change the owner, beneficiaries or the method designated to pay death benefit proceeds.

As a matter of law, all rights of ownership are limited by the rights of any person who has been assigned rights under the policy and any irrevocable beneficiaries.

You may name a new owner by giving us written notice. The effective date of the change to the new owner is the date the prior owner signs the notice. However, we will not be liable for any action we take before a change is recorded at our Customer Service Center. A change in ownership may cause the prior owner to recognize taxable income on gain under the policy.

Beneficiaries

You, as owner, name the beneficiaries when you apply for your policy. The primary beneficiaries who survive the insured person receive the death benefit proceeds. Other surviving beneficiaries receive death benefit proceeds only if there are no surviving primary beneficiaries. If more than one beneficiary survives the insured person, they share the death benefit proceeds equally, unless you specify otherwise. If none of your policy beneficiaries has survived the insured person, we pay the death benefit proceeds to you or to your estate, as owner. If a beneficiary is a minor, the death benefit proceeds will be held in an interest bearing account until that beneficiary attains the age of majority.

You may name new beneficiaries during the insured person's lifetime. We pay death benefit proceeds to the beneficiaries whom you have most recently named according to our records. We do not make payments to multiple sets of beneficiaries. **The designation of certain beneficiaries may have tax consequences. See *Other Tax Matters*, page 72.**

Collateral Assignment

You may assign your policy by sending written notice to us. After we record the assignment, your rights as owner and the beneficiaries' rights (unless the beneficiaries were made irrevocable beneficiaries under an earlier assignment) are subject to the assignment. It is your responsibility to make sure the assignment is valid. **The transfer or assignment of a policy may have tax consequences. See *Other Tax Matters*, page 72.**

Incontestability

After your policy has been in force and the insured person is alive for two years from the policy date and from the effective date of any new coverage segment, an increase in any other benefit or reinstatement, we will not question the validity of statements in your applicable application.

Misstatements of Age or Gender

Notwithstanding the Incontestability provision above, if the insured person's age or gender has been misstated, we adjust the death benefit to the amount that would have been purchased for the insured person's correct age and gender. We base the adjusted death benefit on the cost of insurance charges deducted from your policy value on the last monthly processing date before the insured person's death, or as otherwise required by law.

If unisex cost of insurance rates apply, we do not make any adjustments for a misstatement of gender.

Suicide

If the insured person commits suicide (while sane or insane), within two years of your policy date, unless otherwise required by law, we limit death benefit proceeds to:

- The total premium we receive to the time of death; minus
- Outstanding loan account value plus accrued loan interest; minus
- Partial withdrawals taken.

We make a limited payment to the beneficiaries for a new coverage segment or other increase if the insured person commits suicide (while sane or insane), within two years of the effective date of a new coverage segment or within two years of an increase in any other benefit, unless otherwise required by law. The limited payment is equal to the cost of insurance and periodic fees and charges which that deducted for the increase.

Anti-Money Laundering

In order to protect against the possible misuse of our products in money laundering or terrorist financing, we have adopted an anti-money laundering program satisfying the requirements of the USA PATRIOT Act. Among other things, this program requires us, our agents and customers to comply with certain procedures and standards that serve to assure that our customers' identities are properly verified and that premiums are not derived from improper sources.

Under our anti-money laundering program, we may require policy owners, insured persons and/or beneficiaries to provide sufficient evidence of identification, and we reserve the right to verify any information provided to us by accessing information databases maintained internally or by outside firms.

We may also refuse to accept certain forms of premium payments or loan repayments (traveler's cheques, for example) or restrict the amount of certain forms of premium payments or loan repayments (money orders totaling more than \$5,000, for example). In addition, we may require information as to why a particular form of payment was used (third party checks, for example) and the source of the funds of such payment in order to determine whether or not we will accept it. Use of an unacceptable form of payment may result in us returning the payment to you and your policy either entering the 61-day grace period or lapsing. **See Lapse, page 66. See also Premium Payments Affect Your Coverage, page 25.**

Applicable laws designed to prevent terrorist financing and money laundering might, in certain circumstances, require us to block certain transactions until authorization is received from the appropriate regulator. We may also be required to provide additional information about you and your policy to government regulators.

Our anti-money laundering program is subject to change without notice to take account of changes applicable in laws or regulations and our ongoing assessment of our exposure to illegal activity.

Transaction Processing

Generally, within seven days of when we receive all information required to process a payment, we pay:

- Death benefit proceeds;
- Surrender value;
- Partial withdrawals; and
- Loan proceeds.

We may delay processing these transactions if:

- The New York Stock Exchange is closed for trading;
- Trading on the New York Stock Exchange is restricted by the SEC;
- There is an emergency so that it is not reasonably possible to sell securities in the subaccounts or to determine the value of a subaccount's assets; and
- A governmental body with jurisdiction over the variable account allows suspension by its order.

SEC rules and regulations generally determine whether or not these conditions exist.

We execute transfers among the subaccounts as of the valuation date of our receipt of your request at our Customer Service Center.

We determine the death benefit as of the date of the insured person's death. The death benefit proceeds are not affected by subsequent changes in the value of the subaccounts.

We may delay payment from our fixed account for up to six months, unless law requires otherwise, of surrender proceeds, withdrawal amounts or loan amounts. If we delay payment more than 30 days, we pay interest at our declared rate (or at a higher rate if required by law) from the date we receive your complete request.

Unless you request otherwise, we generally pay death benefit proceeds, surrender value and partial withdrawals into an interest bearing account that may be accessed by you or the beneficiary, as applicable, through a checkbook feature. This interest bearing account is backed by our general account, and the checkbook feature may be used to access the payment at any time without penalty.

Notification and Claims Procedures

Except for certain authorized telephone requests, we must receive in writing any election, designation, change, assignment or request made by the owner.

You must use a form acceptable to us. We are not liable for actions taken before we receive and record the written notice. We may require you to return your policy for changes to your policy or if you surrender it.

If the insured person dies while your policy is in force, please let us know as soon as possible. We will send you instructions on how to make a claim. As proof of the insured person's death, we may require proof of the deceased insured person's age and a certified copy of the death certificate.

The beneficiaries and the deceased insured person's next of kin may need to sign authorization forms. These forms allow us to get information such as medical records of doctors and hospitals used by the deceased insured person.

Telephone Privileges

Telephone privileges are automatically provided to you and your agent/registered representative, unless you decline it on the application or contact our Customer Service Center. Telephone privileges allow you or your agent/registered representative to call our Customer Service Center to:

- Make transfers;
- Change premium allocations;
- Change your dollar cost averaging and automatic rebalancing programs; and
- Request a loan.

Our Customer Service Center uses reasonable procedures to make sure that instructions received by telephone are genuine. These procedures may include:

- Requiring some form of personal identification;
- Providing written confirmation of any transactions; and
- Tape recording telephone calls.

By accepting telephone privileges, you authorize us to record your telephone calls with us. If we use reasonable procedures to confirm instructions, we are not liable for losses from unauthorized or fraudulent instructions. We may discontinue this privilege at any time. **See Limits on Frequent or Disruptive Transfers, page 60.**

Telephone and facsimile privileges may not always be available. Telephone or fax systems, whether yours, your service provider's or your agent/agent representative's, can experience outages or slowdowns for a variety of reasons. These outages or slowdowns may prevent or delay our receipt of your request. Although we have taken precautions to help our systems handle heavy use, we cannot promise complete reliability under all circumstances. If you are experiencing problems, you should make your transfer request by written request.

Non-participation

Your policy does not participate in the surplus earnings of Security Life of Denver Insurance Company.

Advertising Practices and Sales Literature

We may use advertisements and sales literature to promote this product, including:

- Articles on variable life insurance and other information published in business or financial publications;
- Indices or rankings of investment securities; and
- Comparisons with other investment vehicles, including tax considerations.

We may use information regarding the past performance of the subaccounts and funds. Past performance is not indicative of future performance of the subaccounts or funds and is not reflective of the actual investment experience of policy owners.

We may feature certain subaccounts, the underlying funds and their managers, as well as describe asset levels and sales volumes. We may refer to past, current, or prospective economic trends and investment performance or other information we believe may be of interest to our customers.

Settlement Options

You may elect to take the surrender value in other than one lump-sum payment. Likewise, you may elect to have the beneficiaries receive the death benefit proceeds other than in one lump-sum payment, if you make this election during the insured person's lifetime. If you have not made this election, the beneficiaries may do so within 60 days after we receive proof of the insured person's death.

The investment performance of the subaccounts does not affect payments under these settlement options. Instead, interest accrues at a fixed rate based on the option you choose. The declared interest rate will never be less than 3.00%, and any declared interest rate will be in effect for at least 12 months. Payment options are subject to our rules at the time you make your selection. Currently, a periodic payment must be at least \$20 and the total proceeds must be at least \$2,000.

The following settlement options are available:

- **Option 1** – The proceeds and interest are paid in equal installments for a specified period until the proceeds and interest are all paid;
- **Option 2** – The proceeds provide an annuity payment with a specified number of months. The payments are continued for the life of the primary payee. If the primary payee dies before the certain period is over, the remaining payments are paid to a contingent payee;
- **Option 3** – The proceeds are left with us to earn interest. Withdrawals and any changes are subject to our approval;
- **Option 4** – The proceeds and interest are paid in equal installments of a specified amount until the proceeds and interest are all paid; and
- **Option 5** – Other options we offer at the time we pay the benefit.

If none of these settlement options have been elected, your surrender value or the death benefit proceeds will be paid in one lump-sum payment.

Unless you request otherwise, death benefit proceeds generally will be paid into an interest bearing account that is backed by our general account and can be accessed by the beneficiary through a checkbook feature. The beneficiary may access the death benefit proceeds at any time without penalty. Interest earned on this account may be less than interest paid under other settlement options. **See Transaction Processing, page 78.**

Reports

Annual Statement. We will send you an annual statement once each policy year showing the amount of insurance coverage under your policy as well as your policy's death benefit, policy and surrender values, the amount of premiums you have paid, the amounts you have withdrawn, borrowed or transferred and the fees and charges we have imposed since the last statement.

We send semi-annual reports with financial information on the funds, including a list of investment holdings of each fund.

We send confirmation notices to you throughout the year for certain policy transactions such as transfers between investment options, partial withdrawals and loans. You are responsible for reviewing the confirmation notices to verify that the transactions are being made as requested.

Illustrations. To help you better understand how your policy values will vary over time under different sets of assumptions, we will provide you with a personalized illustration projecting future results based on the age and risk classification of the insured person and other factors such as the amount of insurance coverage, death benefit option, planned premiums and rates of return (within limits) you specify. We may assess a charge not to exceed \$25 for each illustration you request after the first in a policy year. **See Excess Illustration Fee, page 29.** Subject to regulatory approval, personalized illustrations may be based upon a weighted average rather than an arithmetic average of fund expenses.

Other Reports. We will mail to you at your last known address of record at least annually a report containing such information as may be required by any applicable law. To reduce expenses, only one copy of most financial reports and prospectuses, including reports and prospectuses for the funds, will be mailed to your household, even if you or other persons in your household have more than one policy issued by us or an affiliate. Call our Customer Service Center toll-free at 1-877-253-5050 if you need additional copies of financial reports, prospectuses, historical account information or annual or semi-annual reports or if you would like to receive one copy for each policy in all future mailings.

Distribution of the Policy

We sell the policy through licensed insurance agents who are registered representatives of affiliated and unaffiliated broker/dealers. All broker/dealers who sell the policy have entered into selling agreements with ING America Equities, Inc., our affiliate and the principal underwriter and distributor of the policy. ING America Equities, Inc. is organized under the laws of the State of Colorado, registered with the SEC as a broker/dealer under the Securities Exchange Act of 1934, and a member of the Financial Industry Regulatory Authority. Its principal office is located at 1290 Broadway, Denver, Colorado 80203-5699.

ING America Equities, Inc. offers the securities under the policies on a continuous basis. For the years ended December 31, 2007, 2006, and 2005, the aggregate amount of underwriting commissions we paid to ING America Equities, Inc. was \$34,635,694, \$30,168,287 and \$35,623,260, respectively.

ING America Equities, Inc. does not retain any commissions or other amounts paid to it by us for sales of the policy. Rather, it pays all the amounts received from us to the broker/dealers for selling the policy, and part of that payment goes to your agent/registered representative.

The following is a list of broker/dealers affiliated with the company which have selling agreements with ING America Equities, Inc.:

- Bancnorth Investment Group, Inc.
- Financial Network Investment Corporation
- Guaranty Brokerage Services, Inc.
- ING Financial Advisers, LLC
- ING Financial Partners, Inc.
- Multi-Financial Securities Corporation
- PrimeVest Financial Services, Inc.

The amounts that we pay for the sale of the policy can generally be categorized as either commissions or other amounts. The commissions we pay can be further categorized as base commissions which may include a portion for wholesaling or supplemental commissions. However categorized, commissions paid will not exceed the total of the percentages shown below.

Base commissions consist of a percentage of premium we receive for the policy up to the target premium amount, a percentage of premium we receive for the policy in excess of the target premium amount and, as a trail commission, a percentage of your average net policy value. We pay up to 90% of premium received up to target premium and 3% of premium received in excess of target premium received in the first policy year, 3% of premium received in renewal years two through ten and 0.10% of the average net policy value beginning in the second policy year. These percentages may decrease thereafter.

Supplemental or wholesaling commissions are paid based on a percentage of target premiums we receive for the policy and certain other designated insurance products sold during a calendar year. The percentages of such commissions that we pay may increase as the aggregate amount of premiums received for all products issued by the company and/or its affiliates during the calendar year increases. The maximum percentage of supplemental commissions that we may pay is 43%.

Generally, the commissions paid on premiums for base coverage under the policy are greater than those paid on premiums for coverage under the Adjustable Term Insurance Rider. Be aware of this and discuss with your agent/registered representative the right blend of base coverage and Adjustable Term Insurance Rider coverage for you.

In addition to the sales compensation described above, ING America Equities, Inc. may also pay broker/dealers additional compensation or reimbursement of expenses for their efforts in selling the policy to you and other customers. These amounts may include:

- Marketing/distribution allowances which may be based on the percentages of premium received, the aggregate commissions paid and/or the aggregate assets held in relation to certain types of designated insurance products issued by the company and/or its affiliates during the year;
- Loans or advances of commissions in anticipation of future receipt of premiums (a form of lending to agents/registered representatives). These loans may have advantageous terms such as reduction or elimination of the interest charged on the loan and/or forgiveness of the principal amount of the loan, which terms may be conditioned on fixed insurance product sales;
- Education and training allowances to facilitate our attendance at certain educational and training meetings to provide information and training about our products. We also hold training programs from time to time at our own expense;
- Sponsor payments or reimbursements for broker/dealers to use in sales contests and/or meetings for their agents/registered representatives who sell our products. We do not hold contests based solely on sales of this product;
- Certain overrides and other benefits that may include cash compensation based on the amount of earned commissions, agent/representative recruiting or other activities that promote the sale of policies; and
- Additional cash or noncash compensation and reimbursements permissible under existing law. This may include, but is not limited to, cash incentives, merchandise, trips, occasional entertainment, meals and tickets to sporting events, client appreciation events, business and educational enhancement items, payment for travel expenses (including meals and lodging) to pre-approved training and education seminars and payment for advertising and sales campaigns.

We may pay commissions, dealer concessions, wholesaling fees, overrides, bonuses, other allowances and benefits and the costs of all other incentives or training programs from our resources, which include the fees and charges imposed under the policy.

The following is a list of the top 25 broker/dealers that, during 2006, received the most, in the aggregate, from us in connection with the sale of registered variable life insurance policies issued by us, ranked by total dollars received:

- ING Financial Partners, Inc.
- NFP Securities, Inc.
- Multi-Financial Securities Corporation
- Transamerica Financial Advisors, Inc.
- M Holdings Securities, Inc.
- Linsco/Private Ledger Corp.
- Securities America, Inc.
- Wachovia Securities, LLC
- American General Securities Incorporated
- Waterstone Financial Group, Inc.
- FSC Agency, Inc.
- ProEquities, Inc.
- Park Avenue Securities LLC
- ValMark Securities, Inc.
- Newbridge Securities Corporation
- R. A. Bench Securities, Inc.
- UBS Financial Services Inc.
- Associated Securities Corp.
- Raymond James Financial Services, Inc.
- Capital Analysts, Incorporated
- World Equity Group, Inc.
- The Leaders Group, Inc.
- Jefferson Pilot Securities Corporation
- Financial Network Investment Corporation
- SII Investments, Inc.

This is a general discussion of the types and levels of compensation paid by us for the sale of our variable life insurance policies. It is important for you to know that the payment of volume or sales-based compensation to a broker/dealer or registered representative may provide that registered representative a financial incentive to promote our policies over those of another company and may also provide a financial incentive to promote the policy offered by this prospectus over one of our other policies.

Legal Proceedings

We are not aware of any pending legal proceedings that involve the variable account as a party.

The company is involved in threatened or pending lawsuits/arbitrations arising from the normal conduct of business. Due to the climate in insurance and business litigation/arbitrations, suits against the company sometimes include claims for substantial compensatory, consequential, or punitive damages and other types of relief. Moreover, certain claims are asserted as class actions, purporting to represent a group of similarly situated individuals. While it is not possible to forecast the outcome of such lawsuits/arbitrations, in light of existing insurance, reinsurance, and established reserves, it is the opinion of management that the disposition of such lawsuits/arbitrations will not have a materially adverse effect on the company's operations or financial position.

ING America Equities, Inc., the principal underwriter and distributor of the policy, is a party to threatened or pending lawsuits/arbitration that generally arise from the normal conduct of business. Some of these suits may seek class action status and sometimes include claims for substantial compensatory, consequential or punitive damages and other types of relief. ING America Equities, Inc. is not involved in any legal proceeding that, in the opinion of management, is likely to have a material adverse effect on its ability to distribute the policy.

Financial Statements

Financial statements of the variable account and the company are contained in the Statement of Additional Information. To request a free Statement of Additional Information, please contact our Customer Service Center at the address or telephone number on the back of this prospectus.

APPENDIX A

Definition of Life Insurance Factors

Guideline Premium Test Factors

Attained		Attained		Attained		Attained		Attained	
<u>Age</u>	<u>Factor</u>	<u>Age</u>	<u>Factor</u>	<u>Age</u>	<u>Factor</u>	<u>Age</u>	<u>Factor</u>	<u>Age</u>	<u>Factor</u>
0-40	2.50	48	1.97	56	1.46	64	1.22	72	1.11
41	2.43	49	1.91	57	1.42	65	1.20	73	1.09
42	2.36	50	1.85	58	1.38	66	1.19	74	1.07
43	2.29	51	1.78	59	1.34	67	1.18	75 – 90	1.05
44	2.22	52	1.71	60	1.30	68	1.17	91	1.04
45	2.15	53	1.64	61	1.28	69	1.16	92	1.03
46	2.09	54	1.57	62	1.26	70	1.15	93	1.02
47	2.03	55	1.50	63	1.24	71	1.13	94	1.01
								95 +	1.00

Cash Value Accumulation Test Factors

The cash value accumulation test factors vary depending on the age and gender of the insured person.

Generally, the cash value accumulation test requires that a policy's death benefit must be sufficient so that the policy value does not at any time exceed the net single premium required to fund the policy's future benefits. The net single premium for a policy is calculated using the greater of 4.00% or the rates of interest guaranteed in the Guaranteed Interest Division of the policy and the 2001 Commissioner's Standard Ordinary Mortality Table and will vary according to the age and gender of the insured person. The factors for the cash value accumulation test are then equal to 1 divided by the net single premium per dollar of paid up whole life insurance for the applicable age and gender.

APPENDIX B

Funds Available Through the Variable Account

The following chart lists the funds that are currently available through the subaccounts of the variable account, along with each fund's investment adviser/subadviser and investment objective. More detailed information about the funds can be found in the current prospectus for each fund.

There is no assurance that the stated investment objectives of any of the funds will be achieved. Shares of the funds will rise and fall in value and you could lose money by allocating policy value to the subaccounts that invest in the funds. Shares of the funds are not bank deposits and are not guaranteed, endorsed or insured by any financial institution, the Federal Deposit Insurance Corporation or any other government agency. Except as noted, all funds are diversified, as defined under the 1940 Act.

Fund Name	Investment Adviser/ Subadviser	Investment Objective
American Funds – Growth Fund (Class 2)	<u>Investment Adviser:</u> Capital Research and Management Company	Seeks growth of capital by investing primarily in U.S. common stocks.
American Funds – Growth-Income Fund (Class 2)	<u>Investment Adviser:</u> Capital Research and Management Company	Seeks capital growth and income over time by investing primarily in U.S. common stocks and other securities that appear to offer potential for capital appreciation and/or dividends.
American Funds – International Fund (Class 2)	<u>Investment Adviser:</u> Capital Research and Management Company	Seeks growth of capital over time by investing primarily in common stocks of companies based outside the United States.
Fidelity® VIP Contrafund® Portfolio (Service Class)	<u>Investment Adviser:</u> Fidelity Management & Research Company <u>Subadvisers:</u> FMR Co., Inc.; Fidelity Research & Analysis Company; Fidelity Management & Research (U.K.) Inc.; Fidelity International Investment Advisors, Fidelity International Investment Advisors (U.K.) Limited; Fidelity Investments Japan Limited	Seeks long-term capital appreciation.
Fidelity® VIP Equity-Income Portfolio (Service Class)	<u>Investment Adviser:</u> Fidelity Management & Research Company <u>Subadvisers:</u> FMR Co., Inc.; Fidelity Research & Analysis Company; Fidelity Management & Research (U.K.), Inc.; Fidelity International Investment Advisors; Fidelity International Investment Advisors (U.K.) Limited; Fidelity Investments Japan Limited	Seeks reasonable income. Also considers the potential for capital appreciation. Seeks to achieve a yield which exceeds the composite yield on the securities comprising the Standard & Poor's 500 SM Index (S&P 500 [®]).

Fund Name	Investment Adviser/ Subadviser	Investment Objective
ING AllianceBernstein Mid Cap Growth Portfolio (Class I)	<u>Investment Adviser:</u> Directed Services LLC <u>Subadviser:</u> AllianceBernstein, L.P.	Seeks long-term growth of capital. The portfolio's investment objective is not fundamental and may be changed without a shareholder vote.
ING BlackRock Large Cap Growth Portfolio (Class I)	<u>Investment Adviser:</u> Directed Services LLC <u>Subadviser:</u> BlackRock Investment Management, LLC	Seeks long-term growth of capital.
ING Evergreen Health Sciences Portfolio (Class I)	<u>Investment Adviser:</u> Directed Services LLC <u>Subadviser:</u> Evergreen Investment Management Company, LLC	A <i>non-diversified</i> portfolio that seeks long-term capital growth. The portfolio's investment objective is not fundamental and may be changed without a shareholder vote.
ING Evergreen Omega Portfolio (Class I)	<u>Investment Adviser:</u> Directed Services LLC <u>Subadviser:</u> Evergreen Investment Management Company, LLC	Seeks long-term capital growth. The portfolio's investment objective is not fundamental and may be changed without a shareholder vote.
ING FMRSM Diversified Mid Cap Portfolio (Class I)	<u>Investment Adviser:</u> Directed Services LLC <u>Subadviser:</u> Fidelity Management & Research Co.	Seeks long-term growth of capital.
ING Global Resources Portfolio (Class I)	<u>Investment Adviser:</u> Directed Services LLC <u>Subadviser:</u> ING Investment Management Co.	A <i>non-diversified</i> portfolio that seeks long-term capital appreciation.
ING JPMorgan Emerging Markets Equity Portfolio (Class I)	<u>Investment Adviser:</u> Directed Services LLC <u>Subadviser:</u> J.P. Morgan Investment Management Inc.	Seeks capital appreciation.
ING JPMorgan Small Cap Core Equity Portfolio (Class I)	<u>Investment Adviser:</u> Directed Services LLC <u>Subadviser:</u> J.P. Morgan Investment Management Inc.	Seeks capital growth over the long term. The portfolio's investment objective is not fundamental and may be changed without a shareholder vote.
ING JPMorgan Value Opportunities Portfolio (Class I)	<u>Investment Adviser:</u> Directed Services LLC <u>Subadviser:</u> J. P. Morgan Investment Management Inc.	Seeks to provide long-term capital appreciation. The portfolio's investment objective is not fundamental and may be changed without a shareholder vote.
ING Julius Baer Foreign Portfolio (Class I)	<u>Investment Adviser:</u> Directed Services LLC <u>Subadviser:</u> Julius Baer Investment Management, LLC	Seeks long-term growth of capital. The portfolio's investment objective is not fundamental and may be changed without a shareholder vote.
ING Legg Mason Value Portfolio (Class I)	<u>Investment Adviser:</u> Directed Services LLC <u>Subadviser:</u> Legg Mason Capital Management, Inc.	A non-diversified portfolio that seeks long-term growth of capital. The portfolio's investment objective is not fundamental and may be changed without a shareholder vote.

Fund Name	Investment Adviser/ Subadviser	Investment Objective
ING LifeStyle Aggressive Growth Portfolio (Class I)	<u>Investment Adviser:</u> ING Investments, LLC <u>Subadvisers:</u> Ibbotson Associates and ING Investment Management Co.	Seeks growth of capital. This objective is not fundamental and may be changed without a shareholder vote.
ING LifeStyle Growth Portfolio (Class I)	<u>Investment Adviser:</u> ING Investments, LLC <u>Subadvisers:</u> Ibbotson Associates and ING Investment Management Co.	Seeks growth of capital and some current income. This objective is not fundamental and may be changed without a shareholder vote.
ING LifeStyle Moderate Growth Portfolio (Class I)	<u>Investment Adviser:</u> ING Investments, LLC <u>Subadvisers:</u> Ibbotson Associates and ING Investment Management Co.	Seeks growth of capital and a low to moderate level of current income. This objective is not fundamental and may be changed without a shareholder vote.
ING LifeStyle Moderate Portfolio (Class I)	<u>Investment Adviser:</u> ING Investments, LLC <u>Subadvisers:</u> Ibbotson Associates and ING Investment Management Co.	Seeks growth of capital and current income. This objective is not fundamental and may be changed without a shareholder vote.
ING Limited Maturity Bond Portfolio (Class S)	<u>Investment Adviser:</u> Directed Services LLC <u>Subadviser:</u> ING Investment Management Co.	Seeks highest current income consistent with low risk to principal and liquidity and secondarily, seeks to enhance its total return through capital appreciation when market factors, such as falling interest rates and rising bond prices, indicate that capital appreciation may be available without significant risk to principal.
ING Liquid Assets Portfolio (Class S)	<u>Investment Adviser:</u> Directed Services LLC <u>Subadviser:</u> ING Investment Management Co.	Seeks high level of current income consistent with the preservation of capital and liquidity.
ING Marsico Growth Portfolio (Class I)	<u>Investment Adviser:</u> Directed Services LLC <u>Subadviser:</u> Marsico Capital Management, LLC	Seeks capital appreciation.
ING Marsico International Opportunities Portfolio (Class I)	<u>Investment Adviser:</u> Directed Services LLC <u>Subadviser:</u> Marsico Capital Management, LLC	Seeks long-term growth of capital. The portfolio's investment objective is not fundamental and may be changed without a shareholder vote.
ING MFS Total Return Portfolio (Class I)	<u>Investment Adviser:</u> Directed Services LLC <u>Subadviser:</u> Massachusetts Financial Services Company	Seeks above-average income (compared to a portfolio entirely invested in equity securities) consistent with the prudent employment of capital. Secondarily seeks reasonable opportunity for growth of capital and income.

Fund Name	Investment Adviser/ Subadviser	Investment Objective
ING MFS Utilities Portfolio (Class S)	<u>Investment Adviser:</u> Directed Services LLC <u>Subadviser:</u> Massachusetts Financial Services Company	A <i>non-diversified</i> portfolio that seeks total return. The portfolio's investment objective is not fundamental and may be changed without a shareholder vote.
ING Oppenheimer Main Street Portfolio[®] (Class I)	<u>Investment Adviser:</u> Directed Services LLC <u>Subadviser:</u> OppenheimerFunds, Inc.	Seeks long-term growth of capital and future income.
ING Pioneer Fund Portfolio (Class I)	<u>Investment Adviser:</u> Directed Services LLC <u>Subadviser:</u> Pioneer Investment Management, Inc.	Seeks reasonable income and capital growth. The portfolio's investment objective is not fundamental and may be changed without a shareholder vote.
ING Pioneer Mid Cap Value Portfolio (Class I)	<u>Investment Adviser:</u> Directed Services LLC <u>Subadviser:</u> Pioneer Investment Management, Inc.	Seeks capital appreciation. The portfolio's investment objective is not fundamental and may be changed without a shareholder vote.
ING Stock Index Portfolio (Class I)	<u>Investment Adviser:</u> Directed Services LLC <u>Subadviser:</u> ING Investment Management Co.	Seeks total return. The portfolio's investment objective is not fundamental and may be changed without a shareholder vote.
ING T. Rowe Price Capital Appreciation Portfolio (Class I)	<u>Investment Adviser:</u> Directed Services LLC <u>Subadviser:</u> T. Rowe Price Associates, Inc.	Seeks, over the long-term, a high total investment return, consistent with the preservation of capital and prudent investment risk.
ING T. Rowe Price Equity Income Portfolio (Class I)	<u>Investment Adviser:</u> Directed Services LLC <u>Subadviser:</u> T. Rowe Price Associates, Inc.	Seeks substantial dividend income as well as long-term growth of capital.
ING Van Kampen Capital Growth Portfolio (Class I)	<u>Investment Adviser:</u> Directed Services LLC <u>Subadviser:</u> Morgan Stanley Investment Management, Inc. (d/b/a Van Kampen)	Seeks long-term capital appreciation.
ING Van Kampen Growth and Income Portfolio (Class S)	<u>Investment Adviser:</u> Directed Services LLC <u>Subadviser:</u> Morgan Stanley Investment Management, Inc. (d/b/a Van Kampen)	Seeks long-term growth of capital and income.
ING VP Index Plus International Equity Portfolio (Class S)	<u>Investment Adviser:</u> ING Investments, LLC <u>Subadviser:</u> ING Investment Management Advisors, B. V.	Seeks to outperform the total return performance of the Morgan Stanley Capital International Europe Australasia and Far East [®] Index ("MSCI EAFE [®] Index"), while maintaining a market level of risk. The portfolio's investment objective is not fundamental and may be changed without a shareholder vote.

Fund Name	Investment Adviser/ Subadviser	Investment Objective
ING Wells Fargo Small Cap Disciplined Portfolio (Class S)	<u>Investment Adviser:</u> Directed Services LLC <u>Subadviser:</u> Wells Capital Management, Inc.	Seeks long-term capital appreciation. The portfolio's investment objective is not fundamental and may be changed without a shareholder vote.
ING Baron Small Cap Growth Portfolio (Initial Class)	<u>Investment Adviser:</u> Directed Services LLC <u>Subadviser:</u> BAMCO, Inc.	Seeks capital appreciation.
ING Columbia Small Cap Value II Portfolio (Initial Class)	<u>Investment Adviser:</u> Directed Services LLC <u>Subadviser:</u> Columbia Management Advisors, LLC	Seeks long-term growth of capital.
ING JP Morgan Mid Cap Value Portfolio (Initial Class)	<u>Investment Adviser:</u> Directed Services LLC <u>Subadviser:</u> J.P. Morgan Investment Management, Inc.	<i>A non-diversified</i> portfolio that seeks growth from capital appreciation.
ING Neuberger Berman Partners Portfolio (Initial Class)	<u>Investment Adviser:</u> Directed Services LLC <u>Subadviser:</u> Neuberger Berman Management Inc.	Seeks capital growth.
ING Oppenheimer Global Portfolio (Initial Class)	<u>Investment Adviser:</u> Directed Services LLC <u>Subadviser:</u> OppenheimerFunds, Inc.	Seeks capital appreciation.
ING Oppenheimer Strategic Income Portfolio (Service Class)	<u>Investment Adviser:</u> Directed Services LLC <u>Subadviser:</u> OppenheimerFunds, Inc.	Seeks a high level of current income principally derived from interest on debt securities.
ING PIMCO Total Return Portfolio (Initial Class)	<u>Investment Adviser:</u> Directed Services LLC <u>Subadviser:</u> Pacific Investment Management Company LLC	Seeks maximum total return, consistent with capital preservation and prudent investment management.
ING T. Rowe Price Diversified Mid Cap Growth Portfolio (Initial Class)	<u>Investment Adviser:</u> Directed Services LLC <u>Subadviser:</u> T. Rowe Price Associates, Inc.	Seeks long-term capital appreciation.
ING UBS U.S. Large Cap Equity Portfolio (Initial Class)	<u>Investment Adviser:</u> Directed Services LLC <u>Subadviser:</u> UBS Global Asset Management (Americas) Inc.	Seeks long-term growth of capital and future income.
ING Van Kampen Comstock Portfolio (Initial Class)	<u>Investment Adviser:</u> Directed Services LLC <u>Subadviser:</u> Morgan Stanley Investment Management, Inc. (d/b/a Van Kampen)	Seeks capital growth and income.

Fund Name	Investment Adviser/ Subadviser	Investment Objective
ING Van Kampen Equity and Income Portfolio (Initial Class)	<u>Investment Adviser:</u> Directed Services LLC <u>Subadviser:</u> Morgan Stanley Investment Management, Inc. (d/b/a Van Kampen)	Seeks total return, consisting of long-term capital appreciation and current income.
ING VP Balanced Portfolio, Inc (Class I)	<u>Investment Adviser:</u> ING Investments, LLC <u>Subadviser:</u> ING Investment Management Co.	Seeks to maximize investment return, consistent with reasonable safety of principal, by investing in a diversified portfolio of one or more of the following asset classes: stocks, bonds and cash equivalents, based on the judgment of the portfolio's management, of which of those sectors or mix thereof offers the best investment prospects.
ING VP Intermediate Bond Portfolio (Class I)	<u>Investment Adviser:</u> ING Investments, LLC <u>Subadviser:</u> ING Investment Management Co.	Seeks to maximize total return consistent with reasonable risk, through investment in a diversified portfolio consisting primarily of debt securities.
ING VP Index Plus LargeCap Portfolio (Class I)	<u>Investment Adviser:</u> ING Investments, LLC <u>Subadviser:</u> ING Investment Management Co.	Seeks to outperform the total return performance of the Standard & Poor's 500 Composite Stock Price Index (S&P 500 Index), while maintaining a market level of risk.
ING VP Index Plus MidCap Portfolio (Class I)	<u>Investment Adviser:</u> ING Investments, LLC <u>Subadviser:</u> ING Investment Management Co.	Seeks to outperform the total return performance of the Standard & Poor's MidCap 400 Index (S&P MidCap 400 Index) while maintaining a market level of risk.
ING VP Index Plus SmallCap Portfolio (Class I)	<u>Investment Adviser:</u> ING Investments, LLC <u>Subadviser:</u> ING Investment Management Co.	Seeks to outperform the total return performance of the Standard & Poor's SmallCap 600 Index (S&P SmallCap 600 Index) while maintaining a market level of risk.
ING VP High Yield Bond Portfolio (Class I)	<u>Investment Adviser:</u> ING Investments, LLC <u>Subadviser:</u> ING Investment Management Co.	Seeks to provide investors with a high level of current income and total return.
ING VP Real Estate Portfolio (Class S)	<u>Investment Adviser:</u> ING Investments, LLC <u>Subadviser:</u> ING Clarion Real Estate Securities L.P.	A non-diversified portfolio that seeks total return. This objective is not fundamental and may be changed without a shareholder vote.
ING VP SmallCap Opportunities Portfolio (Class I)	<u>Investment Adviser:</u> ING Investments, LLC <u>Subadviser:</u> ING Investment Management Co.	Seeks long-term capital appreciation.
Neuberger Berman AMT Socially Responsive Portfolio® (Class I)	<u>Investment Adviser:</u> Neuberger Berman Management Inc. <u>Subadviser:</u> Neuberger Berman, LLC	Seeks long-term growth of capital by investing primarily in securities of companies that meet the fund's financial criteria and social policy.

MORE INFORMATION IS AVAILABLE

If you would like more information about us, the variable account or the policy, the following documents are available free upon request:

- **Statement of Additional Information (“SAI”)** – The SAI contains more specific information about the variable account and the policy, as well as the financial statements of the variable account and the company. The SAI is incorporated by reference into (made legally part of) this prospectus. The following is the Table of Contents for the SAI:

	<u>Page</u>
General Information and History	2
Performance Reporting and Advertising	2
Experts	4
Financial Statements	4
Financial Statements of Security Life Separate Account L1	1
Unaudited Financial Statements of Security Life Separate Account L1 for the Nine-Month Period Ended September 30, 2007	1
Statutory Basis Financial Statements of Security Life of Denver Insurance Company	1
Unaudited Statutory Basis Financial Statements of Security Life of Denver Insurance Company for the Nine-Month Period Ended September 30, 2007	09/30/07 F-1

- **A personalized illustration of policy benefits** – A personalized illustration can help you understand how the policy works, given the policy’s fees and charges along with the investment options, features and benefits and optional benefits you select. A personalized illustration can also help you compare the policy’s death benefits, policy value and surrender value with other life insurance policies based on the same or similar assumptions. We reserve the right to assess a fee of up to \$25 for each personalized illustration you request after the first each policy year. **See Excess Illustration Fee, page 29.**

To request a free SAI or personalized illustration of policy benefits or to make other inquiries about the policy, please contact us at our:

**ING Customer Service Center
P.O. Box 5065
Minot, ND 58702-5065
1-877-253-5050
www.ingservicecenter.com**

Additional information about us, the variable account or the policy (including the SAI) can be reviewed and copied from the SEC’s Internet website (<http://www.sec.gov>) or at the SEC’s Public Reference Branch in Washington, DC. Copies of this additional information may also be obtained, upon payment of a duplicating fee, by writing the SEC’s Public Reference Branch at 100 F Street, NE, Room 1580, Washington, DC 20549. More information about operation of the SEC’s Public Reference Branch can be obtained by calling 202-551-8090. When looking for information regarding the policy offered through this prospectus, you may find it useful to use the number assigned to the registration statement under the 1933 Act. This number is 333-147534.