



**SUPPLEMENTAL INFORMATION**

---

June 30, 2014

# Table of Contents

---

Disclaimer	3
Profile	4
Investments	5
Concentration	5
Performance	5
Financial	6
RIDEA Relationship	6
Dividends	7
Value	7
Leadership	7
Balance Sheets	8
Statements of Income	9
FFO, Normalized FFO, AFFO & FAD	10
Fixed Charge Coverage	11
Debt Maturities	11
Portfolio Summary	12
Annualized Revenue	13
Adjusted EBITDA & EBITDARM	13
Facility Types	13
Fixed Charges	13
Normalized FFO, AFFO & FAD	13
Stabilized Lease	14
Total Return	14
RIDEA	14
WACY	14

# Disclaimer

---

This Supplemental Information and other materials we have filed or may file with the Securities and Exchange Commission, as well as information included in oral statements made, or to be made, by our senior management contain certain “forward-looking” statements as that term is defined by the Private Securities Litigation Reform Act of 1995. All statements regarding our expected future financial position, results of operations, cash flows, funds from operations, continued performance improvements, ability to service and refinance our debt obligations, ability to finance growth opportunities, and similar statements including, without limitations, those containing words such as “may,” “will,” “believes,” “anticipates,” “expects,” “intends,” “estimates,” “plans,” and other similar expressions are forward-looking statements.

Forward-looking statements involve known and unknown risks and uncertainties that may cause our actual results in future periods to differ materially from those projected or contemplated in the forward-looking. Such risks and uncertainties include, among other things, the following risks, which are described in more detail under the heading “Risk Factors” in Item 1A in our Form 10-K for the year ended December 31, 2013:

- We depend on the operating success of our customers (facility operators) for collection of our revenues during this time of uncertain economic conditions in the U.S.;
- We are exposed to the risk that our tenants and borrowers may not be able to meet the rent, principal and interest or other payments due us, which may result in an operator bankruptcy or insolvency, or that an operator might become subject to bankruptcy or insolvency proceedings for other reasons;
- We are exposed to risks related to governmental regulations and payors, principally Medicare and Medicaid, and the effect that lower reimbursement rates will have on our tenants’ and borrowers’ business;
- We are exposed to the risk that the cash flows of our tenants and borrowers will be adversely affected by increased liability claims and general and professional liability insurance costs;
- We are exposed to risks related to environmental laws and the costs associated with the liability related to hazardous substances;
- We are exposed to the risk that we may not be indemnified by our lessees and borrowers against future litigation;
- We depend on the success of future acquisitions and investments;
- We depend on the ability to reinvest cash in real estate investments in a timely manner and on acceptable terms;
- We may need to incur more debt in the future, which may not be available on terms acceptable to the Company;
- We have covenants related to our indebtedness which impose certain operational limitations and a breach of those covenants could materially adversely affect our financial condition and results of operations;
- We are exposed to the risk that the illiquidity of real estate investments could impede our ability to respond to adverse changes in the performance of our properties;
- We are exposed to risks associated with our investments in unconsolidated entities, including our lack of sole decision-making authority and our reliance on the financial condition of other interests;
- We depend on revenues derived mainly from fixed rate investments in real estate assets, while our debt capital used to finance those investments is primarily at variable rates. This circumstance creates interest rate risk to the Company;
- We are exposed to the risk that our assets may be subject to impairment charges;
- We depend on the ability to continue to qualify as a real estate investment trust;
- We have ownership limits in our charter with respect to our common stock and other classes of capital stock which may delay, defer or prevent a transaction or a change of control that might involve a premium price for our common stock or might otherwise be in the best interests of our stockholders;
- We are subject to certain provisions of Maryland law and our charter and bylaws that could hinder, delay or prevent a change in control transaction, even if the transaction involves a premium price for our common stock or our stockholders believe such transaction to be otherwise in their best interests.

In this Supplemental Information, we refer to non-GAAP financial measures. These non-GAAP measures are not prepared in accordance with generally accepted accounting principles. A reconciliation of the non-GAAP financial measures to the most directly comparable GAAP measures is included in this presentation.

Throughout this presentation, certain abbreviations and acronyms are used to simplify the format. A list of definitions is provided at the end of this presentation to clarify the meaning of any reference that may be ambiguous.

Unless otherwise noted, all amounts are unaudited and are as of or for the year to date period ended June 30th.



*Selective Growth.  
Shareholder Value.*

## Profile

**NATIONAL HEALTH INVESTORS, INC. (NYSE: NHI)**, a Maryland corporation incorporated and publicly listed in 1991, is a healthcare real estate investment trust (REIT) specializing in financing healthcare real estate by purchase and leaseback transactions, RIDEA transactions and by mortgage loans. NHI's investments include senior housing (independent living, assisted living & senior living campuses), skilled nursing facilities, medical office buildings, and hospitals.

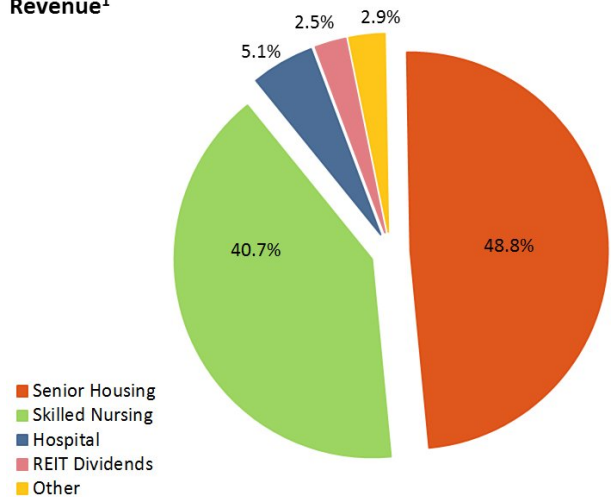
### HIGHLIGHTS

- Geographic & asset class diversification
- Consistent dividend growth since 2001
- Low-leverage balance sheet
- Cash flow growth from lease escalators

### STRATEGY

- Partner with top-tier operators
- Prioritize direct referrals and existing customers
- Continue focus on need-driven senior care
- Prioritize toward AL and newer SNF campuses
- Prioritize toward private pay and Medicare potential
- Develop assisted living and memory care communities

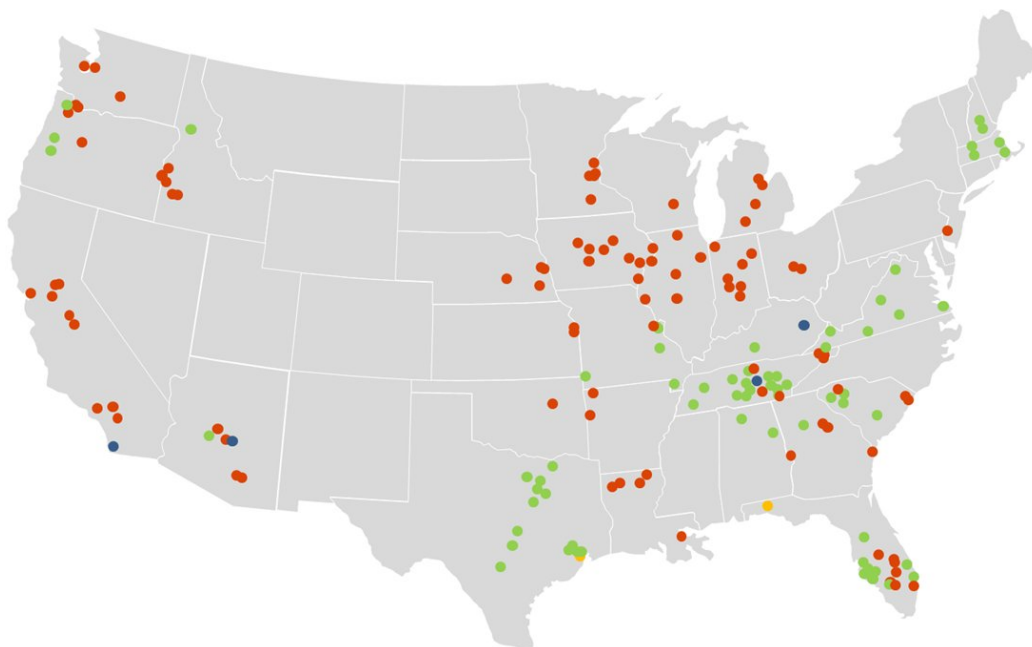
Revenue<sup>1</sup>



<sup>1</sup> excludes straight-line rent income

### GEOGRAPHIC DIVERSIFICATION

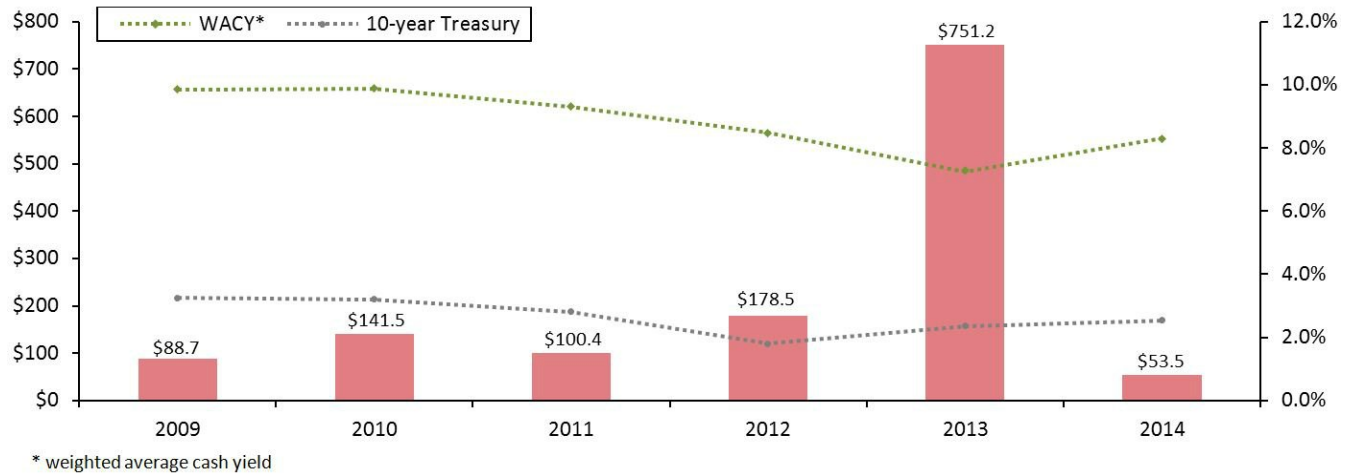
30 Partners | 30 States | 173 Properties



- 96 Senior Housing
- 71 Skilled Nursing
- 4 Hospital
- 2 Medical Office Building

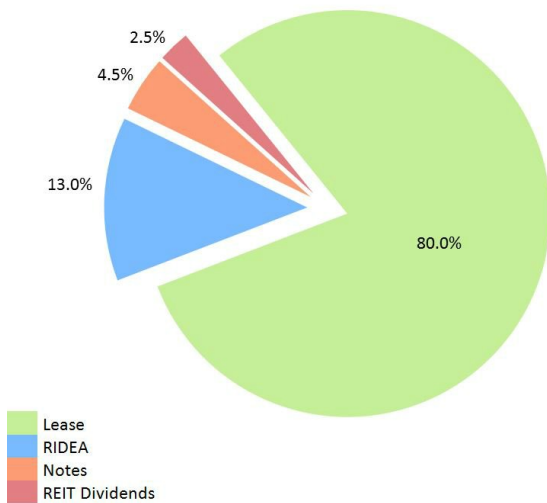
# Investments

(in millions)

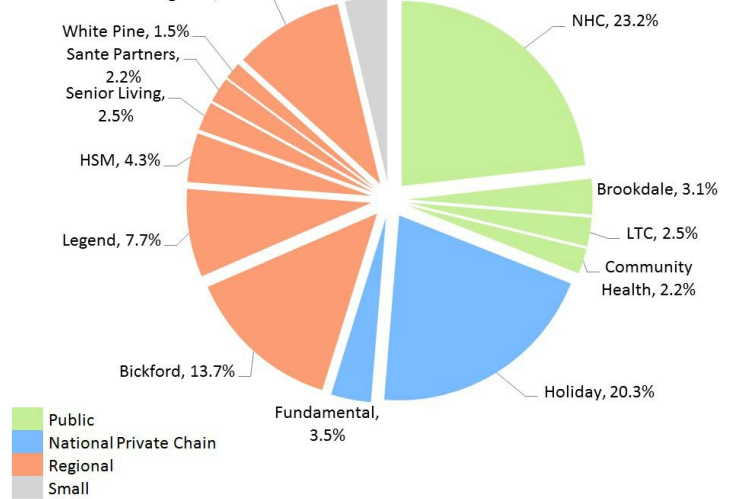


# Concentration

Revenue<sup>1</sup>



Partners<sup>1</sup>

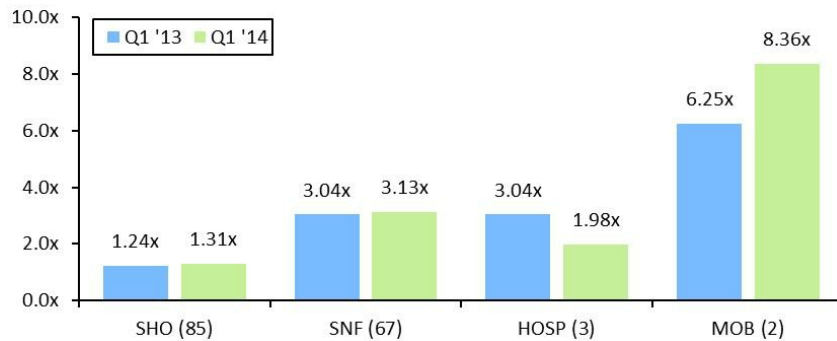


<sup>1</sup> excludes straight-line rent income

# Performance

## STABILIZED LEASE PORTFOLIO

### EBITDARM Coverage<sup>1</sup>



<sup>1</sup> based on trailing twelve months; full portfolio coverage is **2.23x**

(#) indicates the number of properties; excludes development, and lease-up properties; includes 27 stabilized Bickford RIDEA assets

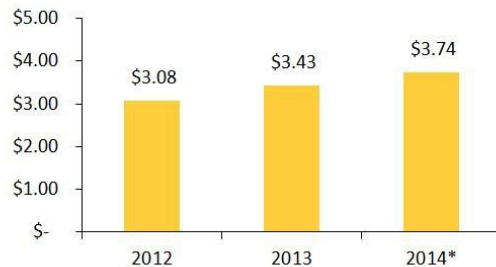
# Financial

## FINANCIAL HIGHLIGHTS

Normalized FFO (per diluted share, \*annualized)



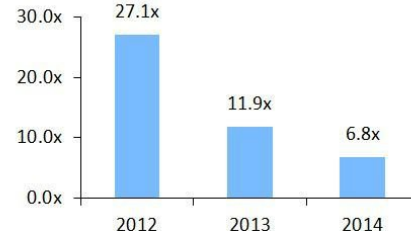
Normalized AFFO (per diluted share, \*annualized)



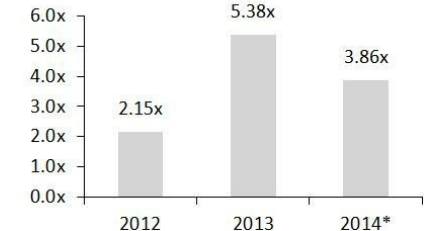
Adjusted EBITDA (millions, \*annualized)



Fixed Charge Coverage



Debt to Adjusted EBITDA (\*annualized)



## RIDEA Relationship

### BICKFORD SENIOR LIVING

A Platform for Growth

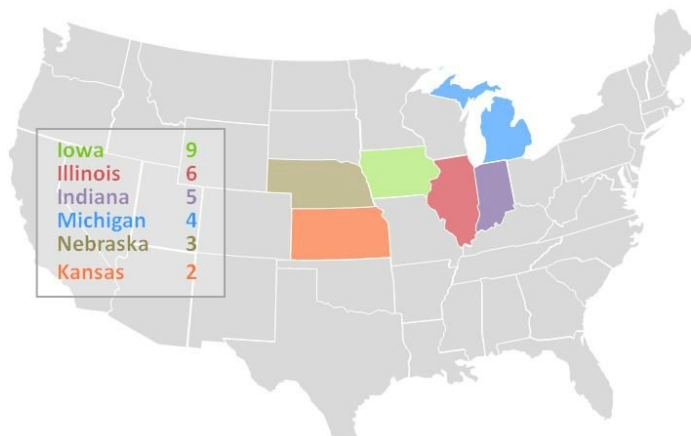


Bickford Senior Living, founded in 1991, is headquartered in Olathe, Kansas and operates 50 assisted living, memory

care and independent living communities in Kansas, Iowa, Illinois, Indiana, Missouri, Georgia, Nebraska and Michigan and has experience in constructing over 150 senior living communities across the country. Their mission: "Bickford exists to enrich HAPPINESS in the lives of our residents, our beloved friends. Happiness is a very personal thing and it has become our mission to discover what that is for each of our residents, based on their life story, their expressed wishes and desires, even based on their day". As part of a joint venture relationship, NHI owns 85% of the operations and real estate in 30 Bickford communities while affiliates of Bickford Senior Living own 15% and manage the communities.

Three months ended (in thousands)

	Q2 '14	Q1 '14	Q4 '13	Q3 '13	Q2 '13
<b>Properties</b>	<b>29</b>	<b>29</b>	<b>29</b>	27	27
Units	1,355	1,355	1,355	1,239	1,239
Average occupied units	1,095	1,100	1,099	1,050	1,044
<b>Average occupancy</b>	<b>80.8%</b>	<b>81.2%</b>	<b>81.1%</b>	84.7%	84.2%
Monthly RPU <sup>1</sup>	\$ 4,820	\$ 4,810	\$ 4,696	\$ 4,712	\$ 4,677
Revenues	\$15,839	\$15,876	\$15,480	\$14,838	\$14,641
Operating expenses	9,834	9,835	9,695	9,272	8,809
<b>EBITDARM</b>	<b>\$ 6,005</b>	<b>\$ 6,041</b>	<b>\$ 5,785</b>	<b>\$ 5,566</b>	<b>\$ 5,832</b>



NHI Annual Revenue from Bickford (in millions)



\* annualized based on Q1 & Q2 2014

## Dividends



The Board of Directors approves a regular quarterly dividend which is reflective of expected taxable income on a recurring basis. Company transactions that are infrequent and non-recurring that generate additional taxable income have been distributed to shareholders in the form of special dividends. Taxable income is determined in accordance with the Internal Revenue Code and differs from net income for financial statement purposes determined in accordance with US GAAP.

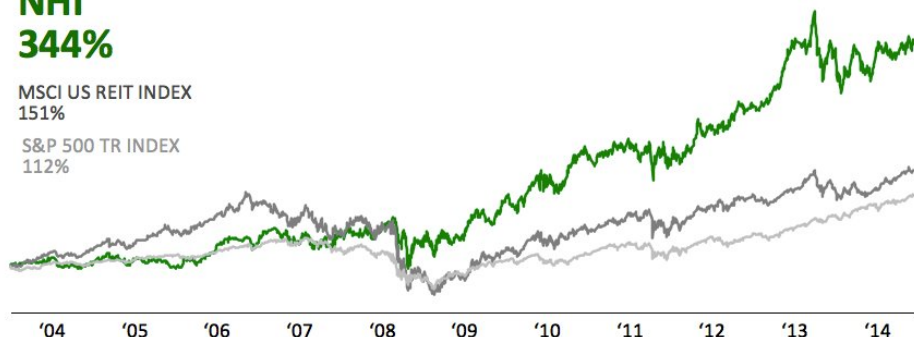
## Value

### 10-Year Total Return

**NHI**  
**344%**

MSCI US REIT INDEX  
151%

S&P 500 TR INDEX  
112%



“NHI's long history of outperforming the market has returned *significant value* to our shareholders.”

Justin Hutchens, President & CEO

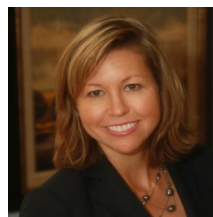
## Leadership



Justin Hutchens  
President & CEO



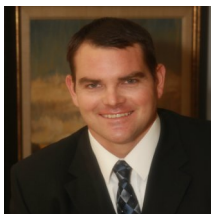
Kristin S. Gaines  
Chief Credit Officer



Mandi Hogan  
National Director,  
Marketing



Roger R. Hopkins  
Chief Accounting  
Officer



Kevin Pascoe  
Senior VP,  
Investments



Ron Reel  
Controller

(615) 890-9100 - [investorrelations@nhireit.com](mailto:investorrelations@nhireit.com)

## Balance Sheets

(in thousands, except share amounts)

	As of	June 30, 2014	June 30, 2013
<b>Assets:</b>			
Real estate properties:			
Land	\$	93,950	\$ 65,674
Buildings and improvements		1,374,727	795,455
Construction in progress		13,973	9,954
		<u>1,482,650</u>	<u>871,083</u>
Less accumulated depreciation		(193,018)	(172,097)
Real estate properties, net		1,289,632	698,986
Mortgage and other notes receivable, net		60,854	65,229
Investment in preferred stock, at cost		38,132	38,132
Cash and cash equivalents		7,157	36,469
Marketable securities		13,991	14,205
Straight-line rent receivable		27,181	15,065
Equity-method investment and other assets		46,180	17,537
Assets held for sale, net		—	1,611
Total Assets	\$	<u>1,483,127</u>	\$ <u>887,234</u>
<b>Liabilities and Stockholders' Equity:</b>			
Debt	\$	638,019	\$ 386,778
Real estate purchase liabilities		4,000	5,856
Accounts payable and accrued expenses		11,084	3,894
Dividends payable		25,452	20,489
Lease deposit liabilities		22,775	—
Deferred income		1,415	1,230
Total Liabilities		<u>702,745</u>	<u>418,247</u>
<b>Commitments and Contingencies</b>			
<b>National Health Investors Stockholders' Equity:</b>			
Common stock, \$.01 par value; 60,000,000 and 40,000,000 shares authorized; 33,054,599 and 27,876,176 shares issued and outstanding, respectively		331	279
Capital in excess of par value		762,703	470,639
Cumulative net income in excess (deficit) of dividends		969	(22,695)
Accumulated other comprehensive income		6,024	9,982
Total National Health Investors Stockholders' Equity		<u>770,027</u>	<u>458,205</u>
Noncontrolling interest		10,355	10,782
Total Equity		<u>780,382</u>	<u>468,987</u>
Total Liabilities and Stockholders' Equity	\$	<u>1,483,127</u>	\$ <u>887,234</u>



## Statements of Income

(in thousands, except share and per share amounts)

	Year to date as of	June 2014	December 2013	December 2012
<b>Revenues:</b>				
Rental income	\$	81,666	\$ 106,029	\$ 81,482
Interest income from mortgage and other notes		3,504	7,633	7,426
Investment income and other		2,126	4,166	4,409
		<u>87,296</u>	<u>117,828</u>	<u>93,317</u>
<b>Expenses:</b>				
Depreciation and amortization		18,777	20,101	14,772
Interest, including amortization of debt discount and issuance costs		13,715	9,229	3,492
Legal		83	784	766
Franchise, excise and other taxes		712	616	771
General and administrative		4,785	9,254	7,799
Loan impairments		—	1,976	(2,195)
		<u>38,072</u>	<u>41,960</u>	<u>25,405</u>
Income before equity-method investee, discontinued operations and noncontrolling interest		49,224	75,868	67,912
Income from equity-method investee		210	324	45
Investment and other gains		—	3,306	4,877
Income from continuing operations		<u>49,434</u>	<u>79,498</u>	<u>72,834</u>
Discontinued operations				
Income from discontinued operations		—	5,426	6,098
Gain on sales of real estate		—	22,258	11,966
Income from discontinued operations		<u>—</u>	<u>27,684</u>	<u>18,064</u>
Net income		49,434	107,182	90,898
Net income attributable to noncontrolling interest		(606)	(999)	(167)
Net income attributable to common stockholders	\$	<u>48,828</u>	<u>\$ 106,183</u>	<u>\$ 90,731</u>
<b>Weighted average common shares outstanding:</b>				
Basic		33,052,083	28,362,398	27,811,813
Diluted		33,086,258	28,397,702	27,838,720
<b>Earnings per common share:</b>				
<b>Basic:</b>				
Income from continuing operations attributable to common stockholders	\$	1.48	\$ 2.77	\$ 2.61
Discontinued operations		—	.97	.65
Net income attributable to common stockholders	\$	<u>1.48</u>	<u>\$ 3.74</u>	<u>\$ 3.26</u>
<b>Diluted:</b>				
Income from continuing operations attributable to common stockholders	\$	1.48	\$ 2.77	\$ 2.61
Discontinued operations		—	.97	.65
Net income attributable to common stockholders	\$	<u>1.48</u>	<u>\$ 3.74</u>	<u>\$ 3.26</u>
Regular dividends declared per common share	\$	1.54	\$ 2.90	\$ 2.64

## FFO, Normalized FFO, AFFO & FAD

(in thousands, except share and per share amounts)

	Year to date as of		
	June 2014	December 2013	December 2012
Net income attributable to common stockholders	\$ 48,828	\$ 106,183	\$ 90,731
Elimination of certain non-cash items in net income:			
Depreciation in continuing operations	18,777	20,101	14,772
Depreciation related to noncontrolling interest	(494)	(634)	(87)
Depreciation in discontinued operations	—	557	2,209
Net gain on sales of real estate	—	(22,258)	(11,966)
<b>Funds from operations</b>	<b>67,111</b>	<b>103,949</b>	<b>95,659</b>
Investment gains	—	(3,256)	(4,760)
Debt issuance costs expensed due to credit facility modifications	2,145	416	—
Non-cash write-off of straight-line rent receivable	—	—	963
Write-offs and expenses due to early lease termination	—	—	297
Acquisition costs under business combination accounting	—	208	—
Legal settlement	—	—	365
Loan impairment	—	1,976	(2,195)
Other items, net	—	—	(271)
<b>Normalized FFO</b>	<b>69,256</b>	<b>103,293</b>	<b>90,058</b>
Straight-line lease revenue, net	(8,490)	(6,560)	(4,627)
Straight-line lease revenue, net, related to noncontrolling interest	34	55	—
Amortization of original issue discount	278	—	—
Amortization of debt issuance costs	854	706	320
<b>Normalized AFFO</b>	<b>61,932</b>	<b>97,494</b>	<b>85,751</b>
Non-cash stock based compensation	1,573	2,339	2,168
<b>Normalized FAD</b>	<b>\$ 63,505</b>	<b>\$ 99,833</b>	<b>\$ 87,919</b>

### BASIC

Weighted average common shares outstanding	33,052,083	28,362,398	27,811,813
FFO per common share	\$ 2.03	\$ 3.67	\$ 3.44
Normalized FFO per common share	\$ 2.10	\$ 3.64	\$ 3.24
Normalized AFFO per common share	\$ 1.87	\$ 3.44	\$ 3.08
Normalized FAD per common share	\$ 1.92	\$ 3.52	\$ 3.16

### DILUTED

Weighted average common shares outstanding	33,086,258	28,397,702	27,838,720
FFO per common share	\$ 2.03	\$ 3.66	\$ 3.44
Normalized FFO per common share	\$ 2.09	\$ 3.64	\$ 3.23
Normalized AFFO per common share	\$ 1.87	\$ 3.43	\$ 3.08
Normalized FAD per common share	\$ 1.92	\$ 3.52	\$ 3.16

### Payout ratios:

Regular dividends per common share (YTD 2014 annualized <sup>1</sup> )	\$ 3.08	\$ 2.90	\$ 2.64
Normalized FFO payout ratio per diluted common share	73.7%	79.7%	81.7%
Normalized AFFO payout ratio per diluted common share	82.4%	84.5%	85.7%
Normalized FAD payout ratio per diluted common share	80.2%	82.4%	83.5%

<sup>1</sup> Through June 30, 2014, we declared dividends of \$1.54 per common share.

NOTE: FFO and Normalized FFO per diluted common share for the six months ended June 30, 2013 differ by \$.04 and \$.04, respectively, from the amounts previously reported as a result of our revised interpretation of the NAREIT definition of FFO. Normalized FAD per diluted common share for the six months ended June 30, 2013 differs by \$.02, from the amount previously reported as a result of changes we made to our definition of FAD.

For the six months ended June 30, 2012, FFO and Normalized FFO per diluted common share differ by \$.02 and \$.02, respectively, from the amounts previously reported as a result of our revised interpretation of the NAREIT definition of FFO. Normalized FAD per diluted common share for the six months ended June 30, 2012 also increased by \$.01, from the amount previously reported as a result of changes we made to our definition of FAD.

See our Form 8-K dated May 5, 2014 which describes these revisions.

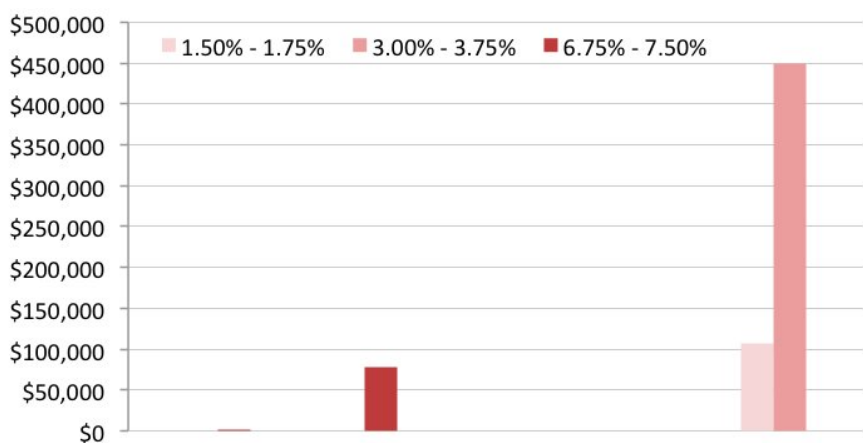
## Fixed Charge Coverage

(dollars in thousands)

	Year to date as of	June 2014	December 2013	December 2012
Net income	\$	49,434	\$ 107,182	\$ 90,898
Interest expense, includes amortization of debt discount and issuance costs		11,570	9,229	3,492
Franchise, excise and other taxes		712	616	771
Depreciation in continuing and discontinued operations		18,777	20,658	16,981
Net gain on sales of real estate		—	(22,258)	(11,966)
Investment gains		—	(3,256)	(4,760)
Debt issuance costs expensed due to credit facility modifications		2,145	416	—
Non-cash write-off of straight-line rent receivable		—	—	963
Write-offs and expenses due to early lease termination		—	—	297
Acquisition costs under business combination accounting		—	208	—
Legal settlement		—	—	365
Loan impairment		—	1,976	(2,195)
Other items, net		—	—	(271)
Adjusted EBITDA	\$	82,638	\$ 114,771	\$ 94,575
Interest expense	\$	11,570	\$ 9,229	\$ 3,492
Principal payments		526	405	—
Fixed Charges	\$	12,096	\$ 9,634	\$ 3,492
Fixed Charge Coverage Ratio		7:1	12:1	27:1

## Debt Maturities

(in thousands)



	2014	2015	2016	2017	Thereafter
Revolving credit facility - unsecured	\$ —	\$ —	\$ —	\$ —	\$ 116,000
Convertible senior notes - unsecured	—	—	—	—	200,000
Bank term loans - unsecured	—	—	—	—	250,000
Fannie Mae term loans - secured	530	77,268	—	—	—
	\$ 530	\$ 77,268	\$ —	\$ —	\$ 566,000

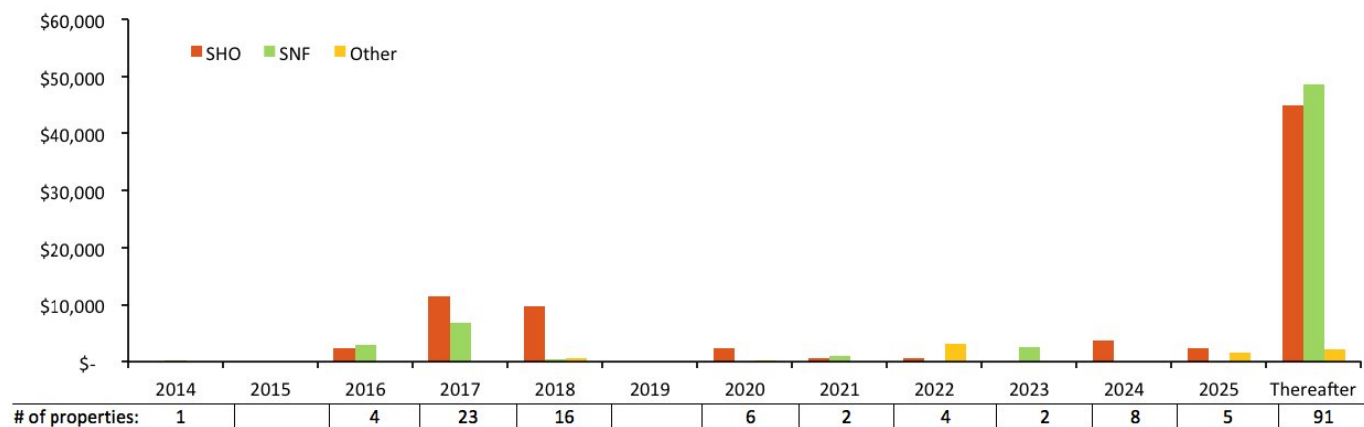
# Portfolio Summary

(dollars in thousands)

	Properties	Units/ Sq. Ft.	YTD Revenue
<b>Leases</b>			
Skilled Nursing <sup>1</sup>	64	8,370	\$ 32,050
Senior Housing	93	6,929	45,371
Hospitals	3	181	3,759
Medical Office Buildings	2	88,517	486
<b>Total Leases</b>	<b>162</b>		<b>\$ 81,666</b>
<b><sup>1</sup> Skilled Nursing</b>			
NHC facilities	39	5,404	\$ 18,227
All other facilities	25	2,966	13,823
	<b>64</b>	<b>8,370</b>	<b>\$ 32,050</b>
<b>Mortgages and Other Notes Receivable</b>			
Skilled Nursing	7	594	\$ 696
Senior Housing	3	386	533
Hospital	1	70	597
Other Notes Receivable	—	—	1,678
<b>Total Mortgages</b>	<b>11</b>	<b>1,050</b>	<b>\$ 3,504</b>

## LEASE MATURITIES

(annualized 2014 cash rent; in thousands)



## TENANT PURCHASE OPTIONS

(% of annualized 2014 cash rent)

Property Type	Option Open Date												
	2014	2015	2016	2017	2018	2019	2020	2021	2022	2023	2024	2025	Thereafter
SHO	—	—	—	—	—	—	3.3%	—	—	—	—	—	—
SNF	—	—	4.1%	—	4.0%	—	—	—	—	—	—	2.3%	0.3%
HOSP	—	—	—	—	1.4%	—	1.1%	—	2.1%	—	—	—	—
MOB	0.4%	—	—	—	—	—	—	—	—	—	—	—	—
	<b>0.4%</b>	<b>—</b>	<b>4.1%</b>	<b>—</b>	<b>5.4%</b>	<b>—</b>	<b>4.4%</b>	<b>—</b>	<b>2.1%</b>	<b>—</b>	<b>—</b>	<b>2.3%</b>	<b>0.3%</b>

## Annualized Revenue

The term *Annualized Revenue* refers to the amount of revenue that our portfolio would generate if all leases and mortgages were in effect for the twelve-month calendar year, regardless of the commencement date, maturity date, or renewals. Therefore, annualized revenue is used for financial analysis purposes, and is not indicative of actual or expected results.

## Adjusted EBITDA & EBITDARM

We consider Adjusted EBITDA to be an important supplemental measure because it provides information which we use to evaluate our performance and serves as an indication of our ability to service debt. We define Adjusted EBITDA as consolidated earnings before interest, taxes, depreciation and amortization, including amounts in discontinued operations, excluding real estate asset impairments and gains on dispositions and certain items which, due to their infrequent or unpredictable nature, may create some difficulty in comparing Adjusted EBITDA for the current period to similar prior periods, and may include, but are not limited to, impairment of non-real estate assets, gains and losses attributable to the acquisition and disposition of assets and liabilities, and recoveries of previous write-downs. Since others may not use our definition of Adjusted EBITDA, caution should be exercised when comparing our Adjusted EBITDA to that of other companies.

EBITDARM is earnings before interest, taxes, depreciation, amortization, rent and management fees.

## Facility Types

SHO - Senior housing

HOSP - Hospital

MOB - Medical office building

SNF -Skilled nursing facility

## Fixed Charges

The term *Fixed Charges* refers to interest expense and debt principal.

## Normalized FFO, AFFO & FAD

These operating performance measures may not be comparable to similarly titled measures used by other REITs. Consequently, our FFO, normalized FFO, normalized AFFO & normalized FAD may not provide a meaningful measure of our performance as compared to that of other REITs. Since other REITs may not use our definition of these operating performance measures, caution should be exercised when comparing our Company's FFO, normalized FFO, normalized AFFO & normalized FAD to that of other REITs. These financial performance measures do not represent cash generated from operating activities in accordance with generally accepted accounting principles ("GAAP") (these measures do not include changes in operating assets and liabilities) and therefore should not be considered an alternative to net earnings as an indication of operating performance, or to net cash flow from operating activities as determined by GAAP as a measure of liquidity, and is not necessarily indicative of cash available to fund cash needs.

FFO, as defined by the National Association of Real Estate Investment Trusts ("NAREIT") and applied by us, is net income (computed in accordance with GAAP), excluding gains (or losses) from sales of real estate property, plus real estate depreciation and amortization, and after adjustments for unconsolidated partnerships and joint ventures, if any. The Company's computation of FFO may not be comparable to FFO reported by other REITs that do not define the term in accordance with the current NAREIT definition or have a different interpretation of the current NAREIT definition from that of the Company; therefore, caution should be exercised when comparing our Company's FFO to that of other REITs. Diluted FFO assumes the exercise of stock options and other potentially dilutive securities. Normalized FFO excludes from FFO certain items which, due to their infrequent or unpredictable nature, may create some difficulty in comparing FFO for the current period to similar prior periods, and may include, but are not limited to, impairment of non-real estate assets, gains and losses attributable to the acquisition and disposition of assets and liabilities, and recoveries of previous write-downs.

We believe that FFO and normalized FFO are important supplemental measures of operating performance for a REIT. Because the historical cost accounting convention used for real estate assets requires depreciation (except on land), such accounting presentation implies that the value of real estate assets diminishes predictably over time. Since real estate values instead have historically risen and fallen with market conditions, presentations of operating results for a REIT that uses historical cost accounting for depreciation could be less informative, and should be supplemented with a measure such as FFO. The term FFO was designed by the REIT industry to address this issue.

We believe that normalized AFFO is an important supplemental measure of operating performance for a REIT. GAAP requires a lessor to recognize contractual lease payments into income on a straight-line basis over the expected term of the lease. This straight-line adjustment has the effect of reporting lease income that is significantly more or less than the contractual cash flows received pursuant to the terms of the lease agreement. GAAP also requires the original issue discount of our convertible senior notes and debt issuance costs to be amortized as a non-cash adjustment to earnings. Normalized AFFO

is useful to our investors as it reflects the growth inherent in our contractual lease payments without the distortion caused by non-cash amortization.

We believe that normalized FAD is an important supplemental measure of operating performance for a REIT, also providing a useful indicator of the ability to distribute dividends to shareholders.

#### **Stabilized Lease**

A newly acquired triple-net lease property is generally considered *stabilized* upon lease-up (typically when senior-care residents occupy at least 80% of the total number of certified units). Newly completed developments, including redevelopments, are considered stabilized upon lease-up, as described above.

#### **Total Return**

The term *Total Return* refers to the total return an investor would have realized on an annual basis over a certain period assuming that all dividends are reinvested on the dividend payment date.

#### **RIDEA**

Our joint ventures are designed to be compliant with the provisions of the REIT Diversification and Empowerment Act of 2007, or RIDEA.

#### **WACY**

The term WACY refers to *Weighted Average Cash Yield*, which is the anticipated rate of return upon initial investment excluding the impact of any discounts received or premiums paid.