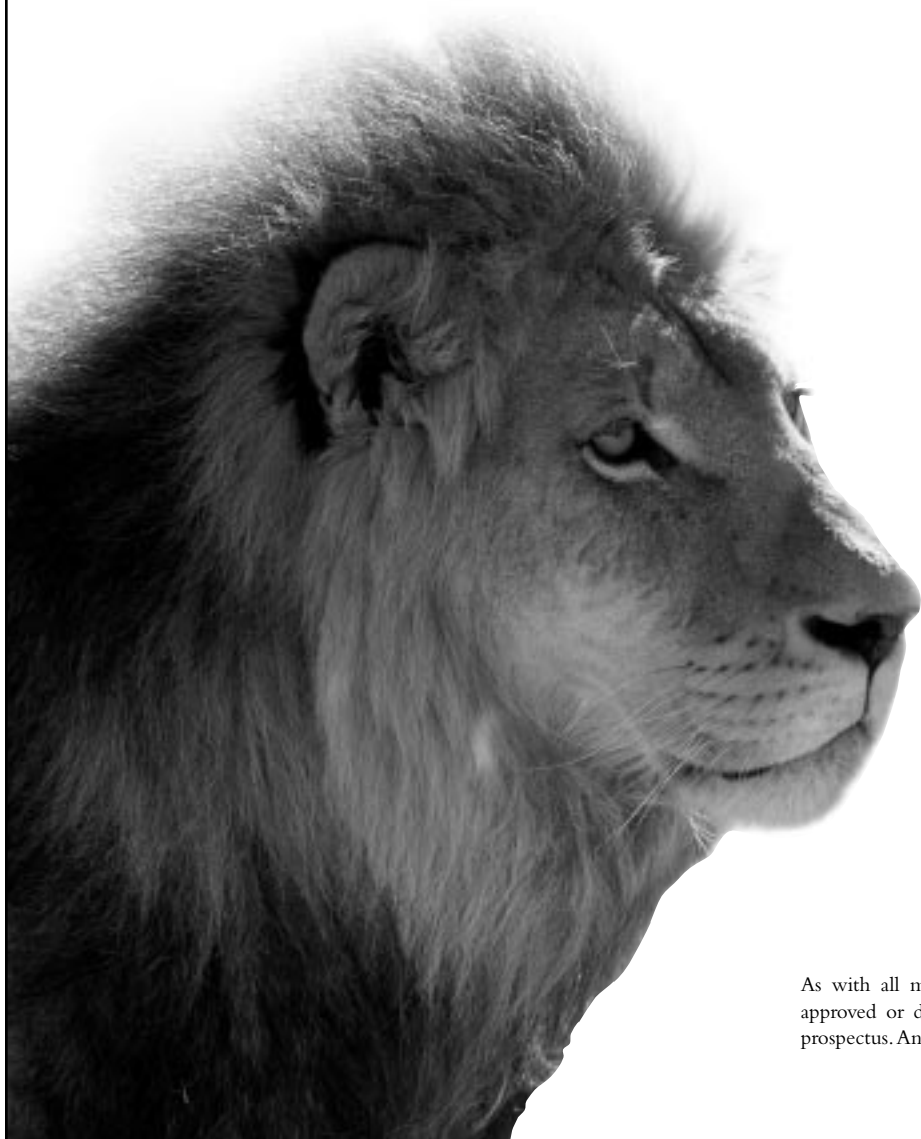


Dreyfus Stock Index Fund, Inc.

Seeks to match the performance
of the S&P 500®

PROSPECTUS May 1, 2008



As with all mutual funds, the Securities and Exchange Commission has not approved or disapproved these securities or passed upon the adequacy of this prospectus. Any representation to the contrary is a criminal offense.



BNY MELLON
ASSET MANAGEMENT

 **Dreyfus**

Contents



GOAL/APPROACH

The Fund

Goal/Approach	Inside cover
Main Risks	1
Past Performance	2
Expenses	3
Management	4
Financial Highlights	6

Account Information

Account Policies	8
Distributions and Taxes	10
Exchange Privilege	10

For More Information

See back cover.

Fund shares are offered only to separate accounts established by insurance companies to fund variable annuity contracts (VA contracts) and variable life insurance policies (VLI policies). Individuals may not purchase shares directly from, or place sell orders directly with, the fund. The VA contracts and VLI policies are described in the separate prospectuses issued by the participating insurance companies, over which the fund assumes no responsibility. Conflicts may arise between the interests of VA contract holders and VLI policyholders (collectively, policyowners). The board of directors will monitor events to identify any material conflicts and, if such conflicts arise, determine what action, if any, should be taken.

The fund currently offers two classes of shares: Initial shares and Service shares. Policyowners should consult the applicable prospectus of the separate account of the participating insurance company to determine which class of fund shares may be purchased by the separate account.

While the fund's investment objective and policies may be similar to those of other funds managed by the investment advisers, the fund's investment results may be higher or lower than, and may not be comparable to, those of the other funds.

The fund seeks to match the total return of the Standard & Poor's 500 Composite Stock Price Index. To pursue this goal, the fund generally invests in all 500 stocks in the S&P 500® in proportion to their weighting in the index.

The fund attempts to have a correlation between its performance and that of the S&P 500 Index of at least .95 before expenses. A correlation of 1.00 would mean that the fund and the index were perfectly correlated.

The S&P 500 is an unmanaged index of 500 common stocks chosen to reflect the industries of the U.S. economy and is often considered a proxy for the stock market in general. S&P adjusts each company's stock weighted in the index by the number of available float shares (i.e., those shares available to public investors) divided by the company's total shares outstanding, which means larger companies with more available float shares have greater representation in the index than smaller ones. The fund also may use stock index futures as a substitute for the sale or purchase of securities.

Concepts to understand

Index funds: mutual funds that are designed to meet the performance of an underlying benchmark index.

In seeking to match index performance, the manager uses a passive management approach and purchases all or a representative sample of the stocks comprising the benchmark index. Because the fund has expenses, performance will tend to be slightly lower than that of the target benchmark.

Standard & Poor's®, S&P®, Standard & Poor's 500® and S&P 500® are trademarks of The McGraw-Hill Companies, Inc. and have been licensed for use by the fund. The fund is not sponsored, endorsed, sold or promoted by Standard & Poor's, and Standard & Poor's makes no representation regarding the advisability of investing in the fund.



MAIN RISKS

The fund's principal risks are discussed below. The value of the shareholder's investment in the fund will fluctuate, sometimes dramatically, which means shareholders could lose money.

- *Market risk.* The market value of a security may decline due to general market conditions that are not specifically related to a particular company, such as real or perceived adverse economic conditions, changes in the general outlook for corporate earnings, changes in interest or currency rates or adverse investor sentiment generally. A security's market value also may decline because of factors that affect a particular industry or industries, such as labor shortages or increased production costs and competitive conditions within an industry.
- *Issuer risk.* The value of a security may decline for a number of reasons which directly relate to the issuer, such as management performance, financial leverage and reduced demand for the issuer's products or services.
- *Indexing strategy risk.* The fund uses an indexing strategy. It does not attempt to manage market volatility, use defensive strategies or reduce the effects of any long-term periods of poor stock performance. The correlation between fund and index performance may be affected by the fund's expenses, changes in securities markets, changes in the composition of the index and the timing of purchases and redemptions of fund shares.

- *Derivatives risk.* The fund may use stock index futures contracts whose performance is tied to the S&P 500 Index. While used primarily as a substitute for the sale or purchase of securities, such investments can increase the fund's volatility and lower its return. Derivatives, such as futures contracts, can be illiquid, and a small investment in certain derivatives could have a potentially large impact on the fund's performance.

Other potential risks

The fund may lend its portfolio securities to brokers, dealers and other financial institutions. In connection with such loans, the fund will receive collateral from the borrower equal to at least 100% of the value of the loaned securities. If the borrower of the securities fails financially, there could be delays in recovering the loaned securities or exercising rights to the collateral.

What this fund is – and isn't

This fund is a mutual fund: a pooled investment that is professionally managed and gives you the opportunity to participate in financial markets. It strives to reach its stated goal, although as with all mutual funds, it cannot offer guaranteed results.

An investment in the fund is not a bank deposit. It is not insured or guaranteed by the FDIC or any other government agency. It is not a complete investment program. Shareholders could lose money in this fund, but shareholders also have the potential to make money.



PAST PERFORMANCE

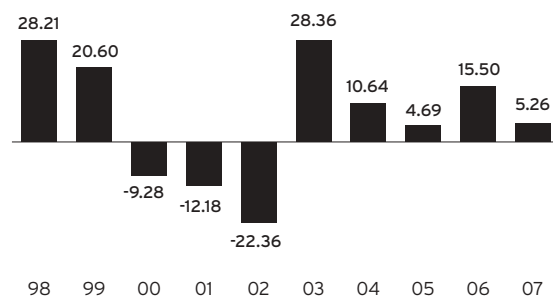
The bar chart and table shown illustrate the risks of investing in the fund. The bar chart shows the performance of the fund's Initial shares from year to year. The table compares the average annual total returns of each of the fund's share classes to those of the S&P 500, a broad measure of U.S. stock market performance. Performance for the fund's Service shares, which commenced operations on December 31, 2000, is based on the performance of the fund's Initial shares prior to that date. The historical performance of the fund's Service shares prior to December 31, 2000 has not been adjusted to reflect the higher operating expenses of the Service shares; if these expenses had been reflected, such performance would have been lower. All returns assume reinvestment of dividends and distributions. Of course, past performance is no guarantee of future results. Performance for each share class will vary due to differences in expenses.

Additional costs

Performance information reflects the fund's expenses only and does not reflect the fees and charges imposed by participating insurance companies under their VA contracts or VLI policies. Because these fees and charges will reduce total return, policyowners should consider them when evaluating and comparing the fund's performance. Policyowners should consult the prospectus for their contract or policy for more information.

Year-by-year total returns *as of 12/31 each year (%)*

Initial shares



Best Quarter: Q4 '98 +21.22%
Worst Quarter: Q3 '02 -17.33%

Average annual total returns *as of 12/31/07*

	1 Year	5 Years	10 Years
Initial shares	5.26%	12.57%	5.63%
Service shares	4.99%	12.29%	5.44%
S&P 500	5.49%	12.82%	5.91%



EXPENSES

Investors pay certain fees and expenses in connection with the fund, which are described in the table below. Annual fund operating expenses are paid out of fund assets, so their effect is included in the fund's share price. As with the performance information given previously, these figures do not reflect any fees or charges imposed by participating insurance companies under their VA contracts or VLI policies.

Fee table

	Initial shares	Service shares
Annual fund operating expenses		
<i>% of average daily net assets</i>		
Management fees	0.25%	0.25%
Rule 12b-1 fee	none	0.25%
Shareholder services fee	0.00%	none
Other expenses	0.02%	0.02%
Total	0.27%	0.52%

Expense example

	1 Year	3 Years	5 Years	10 Years
Initial shares	\$28	\$87	\$152	\$343
Service shares	\$53	\$167	\$291	\$653

This example shows what an investor could pay in expenses over time. It uses the same hypothetical conditions other funds use in their prospectuses: \$10,000 initial investment, 5% total return each year and no changes in expenses. This example does not reflect fees and expenses incurred under VA contracts and VLI policies; if they were reflected, the figures in the example would be higher. The figures shown would be the same whether investors sold their shares at the end of a period or kept them. Because actual returns and expenses will be different, the example is for comparison only.

Concepts to understand

Management fee: the fee paid to Dreyfus for managing the fund and assisting in all aspects of the fund's operations.

Rule 12b-1 fee: the fee paid to the fund's distributor for distributing Service shares, for advertising and marketing related to Service shares, and for providing account service and maintenance for holders of Service shares. The distributor may pay all or part of this fee to participating insurance companies and the broker-dealer acting as principal underwriter for their variable insurance products. Because this fee is paid on an ongoing basis out of fund assets attributable to Service shares, over time it will increase the cost of an investment in Service shares which could be more than that payable with respect to other types of sales charges.

Shareholder services fee: a fee of up to 0.25% used to reimburse the fund's distributor for providing account service and maintenance for holders of Initial shares.

Other expenses: fees paid by the fund for miscellaneous items such as transfer agency, custody, professional and registration fees. The fund also makes payments to certain financial intermediaries, including affiliates, who provide sub-administration, recordkeeping and/or sub-transfer agency services to beneficial owners of the fund.



MANAGEMENT

Investment adviser

The investment adviser for the fund is The Dreyfus Corporation (Dreyfus), 200 Park Avenue, New York, New York 10166. Founded in 1947, Dreyfus manages approximately \$284 billion in approximately 180 mutual fund portfolios. For the past fiscal year, the fund paid Dreyfus a management fee at the annual rate of 0.25% of the fund's average daily net assets. A discussion regarding the basis for the board's approving the fund's management agreement with Dreyfus is available in the fund's semi-annual report for the six-month period ended June 30, 2007. Dreyfus is the primary mutual fund business of The Bank of New York Mellon Corporation (BNY Mellon), a global financial services company focused on helping clients move and manage their financial assets, operating in 34 countries and serving more than 100 markets. BNY Mellon is a leading provider of financial services for institutions, corporations and high-net-worth individuals, providing asset and wealth management, asset servicing, issuer services, and treasury services through a worldwide client-focused team. BNY Mellon has more than \$23 trillion in assets under custody and administration and \$1 trillion in assets under management, and it services more than \$11 trillion in outstanding debt. Additional information is available at www.bnymellon.com.

The Dreyfus asset management philosophy is based on the belief that discipline and consistency are important to investment success. For each fund, Dreyfus seeks to establish clear guidelines for portfolio management and to be systematic in making decisions. This approach is designed to provide each fund with a distinct, stable identity.

Dreyfus has engaged its affiliate, Mellon Capital Management Corporation (Mellon Cap), to serve as the fund's index fund manager. As of February 29, 2008, Mellon Cap, located at 500 Grant Street, Pittsburgh, Pennsylvania 15258, managed approximately \$215 billion in assets and provided investment advisory services for four other investment companies.

Thomas Durante, CFA, is the fund's primary portfolio manager. He has managed the fund since March 2000. Mr. Durante is a portfolio manager with Mellon Cap, where he has been employed since January 2000. He also has been employed by Dreyfus since August 1982.

The fund's Statement of Additional Information (SAI) provides additional information about the portfolio manager's compensation, other accounts managed by the portfolio manager, and the portfolio manager's ownership of fund shares.

Distributor

The fund's distributor is MBSC Securities Corporation (MBSC), a wholly-owned subsidiary of Dreyfus. Dreyfus or MBSC may provide cash payments out of its own resources to financial intermediaries that sell shares of the fund or provide other services. Such payments are separate from any 12b-1 fees and/or shareholder services fees or other expenses paid by the fund to those intermediaries. Because those payments are not made by you or the fund, the fund's total expense ratio will not be affected by any such payments. These additional payments may be made to intermediaries, including affiliates and participating insurance companies, that provide shareholder servicing, sub-administration, recordkeeping and/or sub-transfer agency services, marketing support and/or access to sales meetings, sales representatives and management representatives of the financial intermediary. Cash compensation also may be paid from Dreyfus' or MBSC's own resources to intermediaries for inclusion of the fund on a sales list, including a preferred or select sales list or in other sales programs. These payments sometimes are referred to as "revenue sharing." From time to time, Dreyfus or MBSC also may provide cash or non-cash compensation to financial intermediaries or their representatives in the form of occasional gifts; occasional meals, tickets or other entertainment; support for due diligence trips; educational conference sponsorship; support for recognition programs; and other forms of cash or non-cash compensation permissible under broker-dealer regulations. In some cases, these payments or compensation may create an incentive for a financial intermediary or its employees to recommend or sell shares of the fund to you. Please contact your financial representative for details about any payments they or their firm may receive in connection with the sale of fund shares or the provision of services to the fund.

Code of ethics

The fund, Dreyfus, Mellon Cap and MBSC have each adopted a code of ethics that permits its personnel, subject to such code, to invest in securities, including securities that may be purchased or held by the fund. Each of the Dreyfus and Mellon Cap code of ethics restricts the personal securities transactions of its employees, and requires portfolio managers and other investment personnel to comply with the respective code's preclearance and disclosure procedures. The primary purpose of the respective code is to ensure that personal trading by Dreyfus or Mellon Cap employees does not disadvantage any fund managed by Dreyfus or Mellon Cap, as the case may be.



FINANCIAL HIGHLIGHTS

This table describes the fund's performance for the fiscal periods indicated. "Total return" shows how much your investment in the fund would have increased (or decreased) during each period, assuming you had reinvested all dividends and distributions. Beginning with the 2007 fiscal year, these figures have been audited by Ernst & Young LLP, an independent registered public accounting firm, whose report, along with the fund financial state-

ments, is included in the annual report, which is available upon request. PricewaterhouseCoopers LLP, had been the fund's independent registered public accounting firm effective through the completion of services related to the audit of the 2006 financial statements. The fund had no disagreements with PricewaterhouseCoopers LLP on any matter of accounting principles or practices, financial statement disclosure or auditing scope or procedure.

Initial shares	2007	Year Ended December 31,			
		2006	2005	2004	2003
Per-Share Data (\$):					
Net asset value, beginning of period	36.15	31.82	30.89	28.43	22.47
Investment operations:					
Investment income – net ¹	.64	.56	.49	.51	.37
Net realized and unrealized gain (loss) on investments	1.26	4.33	.94	2.48	5.96
Total from investment operations	1.90	4.89	1.43	2.99	6.33
Distributions:					
Dividends from investment income – net	(.65)	(.56)	(.50)	(.53)	(.37)
Dividends from return of capital	–	–	(.00) ²	(.00) ²	–
Total distributions	(.65)	(.56)	(.50)	(.53)	(.37)
Net asset value, end of period	37.40	36.15	31.82	30.89	28.43
Total Return (%)	5.26	15.50	4.69	10.64	28.36
Ratios/Supplemental Data (%):					
Ratio of total expenses to average net assets	.27	.27	.27	.26	.28
Ratio of net investment income to average net assets	1.70	1.67	1.60	1.76	1.52
Portfolio turnover rate	4.54	4.91	6.09	3.78	2.80
Net assets, end of period (\$ x 1,000)	2,702,209	3,594,085	3,616,211	3,842,397	3,771,728

¹ Based on average shares outstanding at each month end.

² Amount represents less than \$.01 per share.

Service shares	<i>Year Ended December 31,</i>				
	2007	2006	2005	2004	2003
Per-Share Data (\$):					
Net asset value, beginning of period	36.16	31.82	30.90	28.40	22.44
Investment operations: Investment income – net ¹	.55	.47	.42	.46	.32
Net realized and unrealized gain (loss) on investments	1.26	4.35	.93	2.46	5.93
Total from investment operations	1.81	4.82	1.35	2.92	6.25
Distributions: Dividends from investment income – net	(.56)	(.48)	(.43)	(.42)	(.29)
Dividends from return of capital	–	–	(.00) ²	(.00) ²	–
Total distributions	(.56)	(.48)	(.43)	(.42)	(.29)
Net asset value, end of period	37.41	36.16	31.82	30.90	28.40
Total Return (%)	4.99	15.21	4.43	10.35	28.05
Ratios/Supplemental Data (%):					
Ratio of total expenses to average net assets	.52	.52	.52	.51	.53
Ratio of net investment income to average net assets	1.45	1.43	1.35	1.59	1.27
Portfolio turnover rate	4.54	4.91	6.09	3.78	2.80
Net assets, end of period (\$ x 1,000)	532,711	590,965	530,037	503,456	283,150

¹ Based on average shares outstanding at each month end.

² Amount represents less than \$.01 per share.

Account Information



ACCOUNT POLICIES

Buying/Selling shares

Fund shares may be purchased or sold (redeemed) by separate accounts of participating insurance companies. Policyowners should consult the prospectus of the separate account of the participating insurance company for more information about buying or selling fund shares.

The price for fund shares is the net asset value per share (NAV) of the relevant class, which is generally calculated as of the close of trading on the New York Stock Exchange (NYSE) (usually 4:00 p.m. Eastern time) on days the NYSE is open for regular business. Purchase and sale orders from separate accounts received in proper form by the participating insurance company on a given business day are priced at the NAV calculated on such day, provided that the orders are received by the fund in proper form on the next business day. The participating insurance company is responsible for properly transmitting purchase and sale orders.

The fund's investments are valued on the basis of market quotations or official closing prices. If market quotations or official closing prices are not readily available, or are determined not to reflect accurately fair value, the fund may value those investments at fair value as determined in accordance with procedures approved by the fund's board. Fair value of investments may be determined by the fund's board, its pricing committee or its valuation committee in good faith using such information as it deems appropriate under the circumstances. Fair value of foreign equity securities may be determined with the assistance of a pricing service using correlations between the movement of prices of foreign securities and indexes of domestic securities and other appropriate indicators, such as closing market prices of relevant ADRs and futures contracts. Using fair value to price securities may result in a value that is different from a security's most recent closing price and from the prices used by other mutual funds to calculate their net asset values.

The fund is designed for long-term investors. Frequent purchases, redemptions and exchanges may disrupt fund management strategies and harm fund performance by diluting the value of fund shares and increasing brokerage and administrative costs. As a result, Dreyfus and the fund's board have adopted a policy of discouraging excessive trading, short-term market timing and other abusive trading practices (frequent trading) that could adversely affect the fund or its operations. Dreyfus and the fund will not enter into arrangements with any person or group to permit frequent trading.

The fund reserves the right to:

- change or discontinue its exchange privilege, or temporarily suspend the privilege during unusual market conditions
- change its minimum or maximum investment amounts
- delay sending out redemption proceeds for up to seven days (generally applies only during unusual market conditions or in cases of very large redemptions or excessive trading)
- "redeem in kind," or make payments in securities rather than cash, if the amount redeemed is large enough to affect fund operations (for example, if it exceeds 1% of the fund's assets)
- refuse any purchase or exchange request, including those from any participating insurance company, individual or group who, in Dreyfus' view, is likely to engage in frequent trading

Transactions in fund shares are processed by the participating insurance companies using omnibus accounts that aggregate the trades of multiple policyowners. Dreyfus' ability to monitor the trading activity of these policyowners is limited because their individual transactions in fund shares are not disclosed to the fund. Accordingly, Dreyfus relies to a significant degree on the participating insurance company to detect and deter frequent trading. The

agreement with the participating insurance company includes obligations to comply with all applicable federal and state laws. All participating insurance companies have been sent written reminders of their obligations under the agreements, specifically highlighting rules relating to trading fund shares. Further, all participating insurance companies have been requested in writing to notify Dreyfus immediately if, for any reason, they cannot meet their commitment to make fund shares available in accordance with the terms of the prospectus and relevant rules and regulations.

Dreyfus supplements the surveillance processes in place at participating insurance companies by monitoring total purchases and redemptions of fund shares on a periodic basis. If Dreyfus identifies patterns that may be indicative of frequent trading of large amounts, Dreyfus contacts the participating insurance company for assistance in disaggregating selected omnibus trades into their component parts. When this process identifies multiple roundtrips (i.e., an investment that is substantially liquidated within 60 days), Dreyfus instructs the participating insurance company to temporarily or permanently bar such policyowner's future purchases of fund shares if Dreyfus concludes the policyowner is likely to engage in frequent trading. Dreyfus also may instruct the participating insurance company to apply these restrictions across all accounts under common ownership, control or perceived affiliation. In all instances, Dreyfus seeks to make these determinations to the best of its abilities in a manner that it believes is consistent with shareholder interests.

In addition to applying restrictions on future purchases or exchanges, Dreyfus or the participating insurance company may cancel or reverse the purchase or exchange on the business day following the transaction if the participating insurance company's surveillance system identifies the account as one that is likely to engage in frequent trading. Dreyfus may also instruct the participating insurance company to cancel or reverse the purchase or exchange on the following business day if the trade represents a significant amount of the fund's assets and Dreyfus has concluded that the account is likely to engage in frequent trading.

Although the fund's frequent trading and fair valuation policies and procedures are designed to discourage market timing and excessive trading, none of these tools alone, nor all of them together, completely eliminates the potential for frequent trading.



DISTRIBUTIONS AND TAXES

The fund earns dividends, interest and other income from its investments, and distributes this income (less expenses) to shareholders as dividends. The fund also realizes capital gains from its investments, and distributes these gains (less any losses) to shareholders as capital gain distributions. The fund normally pays dividends and distributes capital gains annually. Fund dividends and capital gain distributions will be reinvested in the fund unless the participating insurance company instructs otherwise.

Since the fund's shareholders are the participating insurance companies and their separate accounts, the tax treatment of dividends and distributions will depend on the tax status of the participating insurance company. Accordingly, no discussion is included as to the federal personal income tax consequences to policyowners. For this information, policyowners should consult the prospectus of the separate account of the participating insurance company or their tax advisers.

Participating insurance companies should consult their tax advisers about federal, state and local tax consequences.

Who the shareholders are

The participating insurance companies and their separate accounts are the shareholders of the fund. From time to time, a shareholder may own a substantial number of fund shares. The sale of a large number of shares could hurt the fund's NAV.



EXCHANGE PRIVILEGE

Policyowners may exchange shares of a class for shares of other portfolios or funds offered by the VA contracts or VLI policies through the insurance company separate accounts subject to the terms and conditions set forth in the prospectuses of such VA contracts or VLI policies. Policyowners should refer to the applicable insurance company prospectus for more information on exchanging fund shares.

For More Information

Dreyfus Stock Index Fund, Inc.

More information on this fund is available free upon request, including the following:

Annual/Semiannual Report

Describes the fund's performance, lists portfolio holdings and contains a letter from the portfolio manager discussing recent market conditions, economic trends and fund strategies that significantly affected the fund's performance during the last fiscal year. The fund's most recent annual and semiannual reports are available at www.dreyfus.com.

Statement of Additional Information (SAI)

Provides more details about the fund and its policies. A current SAI is available at www.dreyfus.com and is on file with the Securities and Exchange Commission (SEC). The SAI is incorporated by reference (is legally considered part of this prospectus).

Portfolio Holdings

The fund will disclose its complete schedule of portfolio holdings, as reported on a month-end basis, at www.dreyfus.com, under Mutual Fund Center – Dreyfus Mutual Funds – Mutual Fund Total Holdings. The information will be posted with a one-month lag and will remain accessible until the fund files a report on Form N-Q or Form N-CSR for the period that includes the date as of which the information was current. In addition, fifteen days following the end of each calendar quarter, the fund will publicly disclose at www.dreyfus.com its complete schedule of portfolio holdings as of the end of such quarter.

A complete description of the fund's policies and procedures with respect to the disclosure of the fund's portfolio securities is available in the fund's SAI.

SEC file number: 811-5719

To obtain information:

By telephone

Call 1-800-554-4611 or 516-338-3300

By mail Write to:

The Dreyfus Family of Funds
144 Glenn Curtiss Boulevard
Uniondale, NY 11556-0144
Attn: Institutional Services Department

By E-mail Send your request to info@dreyfus.com

On the Internet Text-only versions of certain fund documents can be viewed online or downloaded from:

SEC <http://www.sec.gov>

Dreyfus <http://www.dreyfus.com>

You can also obtain copies, after paying a duplicating fee, by visiting the SEC's Public Reference Room in Washington, DC (for information, call 1-202-551-8090) or by E-mail request to publicinfo@sec.gov, or by writing to the SEC's Public Reference Section, Washington, DC 20549-0102.



DREYFUS STOCK INDEX FUND, INC.
INITIAL SHARES AND SERVICE SHARES
STATEMENT OF ADDITIONAL INFORMATION
MAY 1, 2008

This Statement of Additional Information, which is not a prospectus, supplements and should be read in conjunction with the current Prospectus of Dreyfus Stock Index Fund, Inc. (the “Fund”), dated May 1, 2008, as the Prospectus may be revised from time to time. To obtain a copy of the Fund’s Prospectus, please call your financial adviser, write to the Fund at 144 Glenn Curtiss Boulevard, Uniondale, New York 11556-0144, visit the www.dreyfus.com, or call 1-800-554-4611 or 516-338-3300.

Fund shares are offered only to variable annuity and variable life insurance separate accounts established by insurance companies (“Participating Insurance Companies”) to fund variable annuity contracts (“VA contracts”) and variable life insurance policies (“VLI policies,” and together with VA contracts, the “Policies”). Individuals may not purchase shares directly from the Fund. The Policies are described in the separate prospectuses issued by the Participating Insurance Companies.

The Fund currently offers two classes of shares: Initial shares and Service shares. VA contract holders and VLI policyholders should consult the applicable prospectus of the separate account of the Participating Insurance Company to determine which class of Fund shares may be purchased by the separate account.

The Fund’s most recent Annual Report and Semi-Annual Report to Shareholders are separate documents supplied with this Statement of Additional Information, and the financial statements, accompanying notes and report of the independent registered public accounting firm appearing in the Annual Report are incorporated by reference into this Statement of Additional Information.

TABLE OF CONTENTS

	<u>Page</u>
Description of the Fund	B-2
Management of the Fund	B-8
Management Arrangements	B-15
How to Buy Shares	B-21
Distribution Plan (Service Shares Only)	B-22
Shareholder Services Plan (Initial Shares Only)	B-23
How to Redeem Shares	B-23
Exchange Privilege	B-24
Determination of Net Asset Value	B-25
Dividends, Distributions and Taxes	B-26
Portfolio Transactions	B-27
Summary of the Proxy Voting Policy, Procedures and Guidelines of the Dreyfus Family of Funds	B-30
Information About the Fund	B-32
Counsel and Independent Registered Public Accounting Firm	B-35
Appendix	B-36

DESCRIPTION OF THE FUND

The Fund is a Maryland corporation formed on January 24, 1989 that commenced operations on September 29, 1989 under the name Dreyfus Life and Annuity Index Fund, Inc. On April 23, 2002, the Fund's name was changed to Dreyfus Stock Index Fund, Inc.

The Dreyfus Corporation ("Dreyfus" or the "Manager") serves as the Fund's manager. Dreyfus has engaged its affiliate, Mellon Capital Management Corporation ("Mellon Cap"), to serve as the Fund's index fund manager and provide day-to-day management of the Fund's investments. Dreyfus and Mellon Cap are referred to collectively as the "Advisers."

MBSC Securities Corporation (the "Distributor") serves as the distributor of the Fund's shares.

Certain Portfolio Securities

The following information supplements and should be read in conjunction with the Fund's Prospectus. When the Fund has cash reserves or as otherwise described below, it may invest in the following securities.

U.S. Government Securities. Securities issued or guaranteed by the U.S. Government or its agencies or instrumentalities include U.S. Treasury securities that differ in their interest rates, maturities and times of issuance. Some obligations issued or guaranteed by U.S. Government agencies and instrumentalities are supported by the full faith and credit of the U.S. Treasury; others by the right of the issuer to borrow from the Treasury; others by discretionary authority of the U.S. Government to purchase certain obligations from the agency or instrumentality; and others only by the credit of the agency or instrumentality. These securities bear fixed, floating or variable rates of interest. While the U.S. Government provides financial support for such U.S. Government-sponsored agencies and instrumentalities, no assurance can be given that it will always do so since it is not so obligated by law.

Repurchase Agreements. In a repurchase agreement, the Fund buys, and the seller agrees to repurchase, a security at a mutually agreed upon time and price. The repurchase agreement thereby determines the yield during the purchaser's holding period, while the seller's obligation to repurchase is secured by the value of the underlying security. The Fund's custodian or sub-custodian will have custody of, and will hold in a segregated account, securities acquired by the Fund under a repurchase agreement. Repurchase agreements are considered by the staff of the Securities and Exchange Commission (the "SEC") to be loans by the Fund. Repurchase agreements could involve risks in the event of a default or insolvency of the other party to the agreement, including possible delays or restrictions upon the Fund's ability to dispose of the underlying securities. In an attempt to reduce the risk of incurring a loss on a repurchase agreement, the Fund will require that additional securities be deposited with it if the value of the securities purchased should decrease below resale price.

Bank Obligations. The Fund may purchase certificates of deposit, time deposits, bankers' acceptances and other short-term obligations issued by domestic banks, foreign subsidiaries or

foreign branches of domestic banks, domestic and foreign branches of foreign banks, domestic savings and loan associations and other banking institutions. With respect to such securities issued by foreign subsidiaries or foreign branches of domestic banks, and domestic and foreign branches of foreign banks, the Fund may be subject to additional investment risks that are different in some respects from those incurred by a fund which invests only in debt obligations of U.S. domestic issuers.

Certificates of deposit are negotiable certificates evidencing the obligation of a bank to repay funds deposited with it for a specified period of time.

Time deposits are non-negotiable deposits maintained in a banking institution for a specified period of time (in no event longer than seven days) at a stated interest rate.

Bankers' acceptances are credit instruments evidencing the obligation of a bank to pay a draft drawn on it by a customer. These instruments reflect the obligation both of the bank and the drawer to pay the face amount of the instruments upon maturity. The other short-term obligations may include uninsured, direct obligations bearing fixed, floating or variable interest rates.

Commercial Paper. Commercial paper consists of short-term, unsecured promissory notes issued to finance short-term credit needs. The commercial paper purchased by the Fund will consist only of direct obligations which, at the time of their purchase, are (a) rated at least Prime-1 by Moody's Investors Service, Inc. ("Moody's") or A-1 by Standard & Poor's Ratings Services ("S&P"), (b) issued by companies having an outstanding unsecured debt issue currently rated at least Aa by Moody's or at least AA- by S&P, or (c) if unrated, determined by the Advisers to be of comparable quality to those rated obligations which may be purchased by the Fund.

Investment Companies. The Fund may invest in securities issued by other investment companies. Under the Investment Company Act of 1940, as amended (the "1940 Act"), the Fund's investment in such securities, subject to certain exceptions, currently is limited to (i) 3% of the total voting stock of any one investment company, (ii) 5% of the Fund's total assets with respect to any one investment company and (iii) 10% of the Fund's total assets in the aggregate. As a shareholder of another investment company, the Fund would bear, along with other shareholders, its pro rata portion of the other investment company's expenses, including advisory fees. These expenses would be in addition to the advisory fees and other expenses that the Fund bears directly in connection with its own operations. The Fund also may invest its uninvested cash reserves or cash it receives as collateral from borrowers of its portfolio securities in connection with the Fund's securities lending program in shares of one or more money market funds advised by Dreyfus. Such investments will not be subject to the limitations described above. See "Lending Portfolio Securities."

Investment Techniques

The following information supplements and should be read in conjunction with the Fund's Prospectus.

General. The Fund seeks to match the total return of the Standard & Poor's 500 Composite Stock Price Index (the "Index"). The Index is composed of 500 common stocks, most of which are traded on the New York Stock Exchange ("NYSE"), chosen by S&P to best capture the price performance of a large cross-section of the U.S. publicly traded stock market. The Index is structured to approximate the general distribution of industries in the U.S. economy. The 500 securities represent approximately 75% of the market value of all U.S. common stocks. Component stocks included in the Index are chosen with the aim of achieving a distribution at the index level representative of the various components of the U.S. economy and therefore do not represent the 500 largest companies. Aggregate market value and trading activity are also considered in the selection process. A limited percentage of the Index may include foreign securities and real estate investment trusts ("REITs").

The Fund will attempt to achieve a correlation between the performance of its portfolio and that of the Index of at least 0.95, without taking into account expenses. A correlation of 1.00 would indicate perfect correlation, which would be achieved when the Fund's net asset value, including the value of its dividends and capital gains distributions, increases or decreases in exact proportion to changes in the Index. The Fund's ability to correlate its performance with the Index, however, may be affected by, among other things, changes in securities markets, the manner in which the Index is calculated by S&P and the timing of purchases and redemptions. In the future, the Fund's Board, subject to the approval of shareholders, may select another index if such a standard of comparison is deemed to be more representative of the performance of common stocks.

The Fund's ability to duplicate the performance of the Index also depends to some extent on the size of the Fund's portfolio and the size of cash flows into and out of the Fund. Investment changes to accommodate these cash flows are made to maintain the similarity of the Fund's portfolio to the Index to the maximum practicable extent.

Borrowing Money. The Fund is permitted to borrow money only for temporary or emergency (not leveraging) purposes, in an amount up to 5% of the value of its total assets (including the amount borrowed) valued at the lesser of cost or market, less liabilities (not including the amount borrowed) at the time the borrowing is made.

Lending Portfolio Securities. The Fund may lend securities from its portfolio to brokers, dealers and other financial institutions needing to borrow securities to complete certain transactions. In connection with such loans, the Fund remains the owner of the loaned securities and continues to be entitled to payments in amounts equal to the interest, dividends or other distributions payable on the loaned securities. The Fund also has the right to terminate a loan at any time. The Fund may call the loan to vote proxies if a material issue affecting the Fund's investment is to be voted upon. Loans of portfolio securities may not exceed 33-1/3% of the value of the Fund's total assets (including the value of all assets received as collateral for the loan). The Fund will receive collateral consisting of cash, U.S. Government securities or irrevocable letters of credit which will be maintained at all times in an amount equal to at least 100% of the current market value of the loaned securities. If the collateral consists of a letter of credit or securities, the borrower will pay the Fund a loan premium fee. If the collateral consists

of cash, the Fund will reinvest the cash and pay the borrower a pre-negotiated fee or “rebate” from any return earned on the investment. The Fund may participate in a securities lending program operated by Mellon Bank, N.A., as lending agent (the “Lending Agent”). The Lending Agent will receive a percentage of the total earnings of the Fund derived from lending its portfolio securities. Should the borrower of the securities fail financially, the Fund may experience delays in recovering the loaned securities or exercising its rights in the collateral. Loans are made only to borrowers that are deemed by Dreyfus to be of good financial standing. In a loan transaction, the Fund will also bear the risk of any decline in value of securities acquired with cash collateral. The Fund will minimize this risk by limiting the investment of cash collateral to money market funds advised by Dreyfus, repurchase agreements or other high quality instruments with short maturities.

Derivatives. The Fund may invest in, or enter into, derivatives, such as stock index futures, in anticipation of taking a market position when, in the opinion of the Advisers, available cash balances do not permit an economically efficient trade in the cash market, to hedge dividend accruals or to meet liquidity needs. Derivatives may provide a cheaper, quicker or more specifically focused way for the Fund to invest than “traditional” securities would.

Derivatives can be volatile and involve various types and degrees of risk, depending upon the characteristics of the particular derivative and the portfolio as a whole. Derivatives permit the Fund to increase or decrease the level of risk, or change the character of the risk, to which its portfolio is exposed in much the same way as the Fund can increase or decrease the level of risk, or change the character of the risk, of its portfolio by making investments in specific securities. However, derivatives may entail investment exposures that are greater than their cost would suggest, meaning that a small investment in derivatives could have a large potential impact on the Fund’s performance.

If the Fund invests in derivatives at inopportune times or judges market conditions incorrectly, such investments may lower the Fund’s return or result in a loss. The Fund also could experience losses if its derivatives were poorly correlated with its other investments, or if the Fund were unable to liquidate its position because of an illiquid secondary market. The market for many derivatives is, or suddenly can become, illiquid. Changes in liquidity may result in significant, rapid and unpredictable changes in the prices for derivatives.

Derivatives may be purchased on established exchanges or through privately negotiated transactions referred to as over-the-counter derivatives. Exchange-traded derivatives generally are guaranteed by the clearing agency that is the issuer or counterparty to such derivatives. This guarantee usually is supported by a daily variation margin system operated by the clearing agency in order to reduce overall credit risk. As a result, unless the clearing agency defaults, there is relatively little counterparty credit risk associated with derivatives purchased on an exchange. In contrast, no clearing agency guarantees over-the-counter derivatives. Therefore, each party to an over-the-counter derivative bears the risk that the counterparty will default. Accordingly, the Advisers will consider the creditworthiness of counterparties to over-the-counter derivatives in the same manner as it would review the credit quality of a security to be purchased by the Fund. Over-the-counter derivatives are less liquid than exchange-traded derivatives since the other party to the transaction may be the only investor with sufficient

understanding of the derivative to be interested in bidding for it.

Pursuant to regulations and/or published positions of the SEC, the Fund may be required to segregate permissible liquid assets, or engage in other measure approved by the SEC or its staff, to “cover” the Fund’s obligations relating to its transactions in derivatives. For example, in the case of futures contracts that are not contractually required to cash settle, the Fund must set aside liquid assets equal to such contracts’ full notional value (generally, the total numerical value of the asset underlying a futures contract at the time of valuation) while the positions are open. With respect to futures contracts that are contractually required to cash settle, however, the Fund is permitted to set aside liquid assets in an amount equal to the Fund’s daily marked to market net obligations (i.e., the Fund’s daily net liability) under the contracts, if any, rather than such contracts’ full notional value. By setting aside assets equal to only its net obligations under cash-settled futures contracts, the Fund may employ leverage to greater extent than if the Fund were required to segregate assets equal to the full notional value of such contracts.

The Fund will not be a commodity pool. The Fund has filed notice with the Commodity Futures Trading Commission and National Futures Association of its eligibility as a registered investment company for an exclusion from the definition of commodity pool operator and that the Fund is not subject to registration or regulation as a commodity pool operator under the Commodity Exchange Act.

Stock Index Futures. A stock index future obligates the Fund to pay or receive an amount of cash equal to a fixed dollar amount specified in the futures contract multiplied by the difference between the settlement price of the contract on the contract’s last trading day and the value of the index based on the stock prices of the securities that comprise it at the opening of trading in such securities on the next business day. The Fund purchases and sells futures contracts on the stock index for which it can obtain the best price with consideration also given to liquidity.

Using futures in anticipation of market transactions involves certain risks. Although the Fund intends to purchase or sell futures contracts only if there is an active market for such contracts, no assurance can be given that a liquid market will exist for any particular contract at any particular time. In addition, the price of stock index futures may not correlate perfectly with the movement in the stock index due to certain market distortions. First, all participants in the futures market are subject to margin deposit and maintenance requirements. Rather than meeting additional margin deposit requirements, investors may close futures contracts through offsetting transactions which would distort the normal relationship between the index and futures markets. Secondly, from the point of view of speculators, the deposit requirements in the futures market are less onerous than margin requirements in the securities market. Therefore, increased participation by speculators in the futures market also may cause temporary price distortions. Because of the possibility of price distortions in the futures market and the imperfect correlation between movements in the stock index and movements in the price of stock index futures, a correct forecast of general market trends still may not result in a successful hedging transaction.

Investment Restrictions

The Fund's investment objective is a fundamental policy, which cannot be changed without approval by the holders of a majority (as defined in the 1940 Act) of the Fund's outstanding voting shares. In addition, the Fund has adopted investment restrictions numbered 1 through 9 as fundamental policies. The Fund may not:

1. Purchase securities of any company having less than three years' continuous operations (including operations of any predecessors) if such purchase would cause the value of the Fund's investments in all such companies to exceed 5% of the value of its total assets.
2. Invest in commodities, except that the Fund may invest in futures contracts as described in the Prospectus and Statement of Additional Information.
3. Purchase, hold or deal in real estate, or oil and gas interests, but the Fund may purchase and sell securities that are secured by real estate or issued by companies that invest or deal in real estate.
4. Borrow money or pledge, mortgage or hypothecate its assets, except as described in the Fund's Prospectus and the Statement of Additional Information and in connection with entering into futures contracts. Collateral arrangements with respect to initial or variation margin for futures contracts will not be deemed to be pledges of the Fund's assets.
5. Lend any securities or make loans to others, except to the extent permitted under the 1940 Act (which currently limits such loans to no more than 33-1/3% of the value of the Fund's total assets) or as otherwise permitted by the SEC. For purposes of this Investment Restriction, the purchase of debt obligations (including acquisitions of loans, loan participations or other forms of debt instruments) and the entry into repurchase agreements shall not constitute loans by the Fund. Any loans of portfolio securities will be made according to guidelines established by the SEC and the Fund's Board.
6. Act as an underwriter of securities of other issuers or purchase securities subject to restrictions on disposition under the Securities Act of 1933 (so-called "restricted securities"). The Fund may not enter into repurchase agreements providing for settlement in more than seven days after notice or purchase securities which are not readily marketable, if, in the aggregate, more than 10% of the value of the Fund's net assets would be so invested. The Fund will not enter into time deposits maturing in more than seven days and time deposits maturing from two businesses through seven calendar days will not exceed 10% of the Fund's total assets.
7. Invest in the securities of a company for the purpose of exercising management or control, but the Fund will vote the securities it owns in its portfolio as a shareholder in accordance with its views.
8. Purchase, sell or write puts, calls or combinations thereof.

9. Invest more than 25% of its assets in investments in any particular industry or industries (including banking), except to the extent the Index also is so concentrated, provided that, when the Fund has adopted a temporary defensive posture, there shall be no limitation on the purchase of obligations issued or guaranteed by the U.S. Government, its agencies or instrumentalities.

In addition to the investment restrictions adopted as set forth above, the Fund has adopted certain additional non-fundamental policies which may be changed by vote of a majority of the Board members at any time. The Fund may not: (i) engage in arbitrage transactions, (ii) purchase warrants (other than those acquired by the Fund in units or attached to securities), (iii) sell securities short, but reserves the right to sell securities short against the box, (iv) invest more than 10% of its total assets in the securities of any single issuer or hold more than 10% of the voting securities of any single issuer, or (v) purchase securities of other investment companies, except to the extent permitted under the 1940 Act. In addition, the Fund intends to: (i) comply with the diversification requirements under Section 817(h) of the Internal Revenue Code of 1986, as amended (the "Code"), and (ii) comply in all material respects with relevant insurance laws and regulations applicable to investments of separate accounts of Participating Insurance Companies.

If a percentage restriction is adhered to at the time of investment, a later change in percentage resulting from a change in values or assets will not constitute a violation of such restriction.

MANAGEMENT OF THE FUND

The Fund's Board is responsible for the management and supervision of the Fund and approves all significant agreements with those companies that furnish services to the Fund. These companies are as follows:

The Dreyfus Corporation	Manager
Mellon Capital Management Corporation, LLP	Index Fund Manager
MBSC Securities Corporation.	Distributor
Dreyfus Transfer, Inc.	Transfer Agent
Mellon Trust of New England, N.A.	Custodian

Board Members of the Fund¹

Board members of the Fund, together with information as to their positions with the Fund, principal occupations and other board memberships and affiliations, are shown below.

<u>Name (Age)</u> <u>Position with Fund (Since)</u>	<u>Principal Occupation</u> <u>During Past 5 Years</u>	<u>Other Board Memberships and Affiliations</u>
Joseph S. DiMartino (64) Chairman of the Board (1995)	Corporate Director and Trustee	The Muscular Dystrophy Association, <i>Director</i> Century Business Services, Inc., a provider of outsourcing functions for small and medium size companies, <i>Director</i> The Newark Group, a provider of a national market of paper recovery facilities, paperboard mills and paperboard converting plants, <i>Director</i> Sunair Services Corporation, a provider of certain outdoor-related services to homes and businesses, <i>Director</i>
Peggy C. Davis (65) Board Member (2006)	Shad Professor of Law, New York University School of Law (1983 – present) Writer and teacher in the fields of evidence, constitutional theory, family law, social sciences and the law, legal process and professional methodology and training	None
David P. Feldman (68) Board Member (1996)	Corporate Director and Trustee	BBH Mutual Funds Group (11 funds), <i>Director</i> The Jeffrey Company, a private investment company, <i>Director</i>
James F. Henry (77) Board Member (2006)	President, The International Institute for Conflict Prevention and Resolution, a non-profit organization principally engaged in the development of alternatives to business litigation (Retired 2003) Advisor to The Elaw Forum, a consultant on managing corporate legal costs Advisor to John Jay Homstead (the restored home of the first U.S. Chief Justice) Individual Trustee of several trusts	Director, advisor and mediator involved in several non-profit organizations, primarily engaged in domestic and international dispute resolution, and historic preservation

¹ None of the Board members are “interested persons” of the Fund, as defined in the 1940 Act.

Name (Age) Position with Fund (Since)	Principal Occupation <u>During Past 5 Years</u>	<u>Other Board Memberships and Affiliations</u>
Ehud Houminer (67) Board Member (1993)	Executive-in-Residence at the Columbia Business School, Columbia University	Avnet Inc., an electronics distributor, <i>Director</i> International Advisory Board to the MBA Program School of Management, Ben Gurion University, <i>Chairman</i>
Gloria Messinger (78) Board Member(1993)	Arbitrator for American Arbitration Association and National Association of Securities Dealers, Inc. Consultant in Intellectual Property	Theater for a New Audience, Inc., <i>Director</i> Brooklyn Philharmonic, <i>Director</i>
Dr. Martin Peretz (68) Board Member (2006)	Editor-in-Chief of The New Reput Magazine Lecturer in Social Studies at Harvard University (1965- 2002) Director of TheStreet.com, a financial information service on the web	American Council of Trustees and Alumni, <i>Director</i> Pershing Square Capital Management, <i>Advisor</i> Montefiore Ventures, <i>General Partner</i> Harvard Center for Blood Research, <i>Trustee</i> Bard College, <i>Trustee</i> Board of Overseers of YIVO Institute for Jewish Research, <i>Chairman</i>
Anne Wexler (78) Board Member (1996)	Chairman of the Wexler & Walker Public Policy Associates, consultants specializing in government relations and public affairs from January 1981 to present	Wilshire Mutual Funds (5 funds), <i>Director</i> The Community Foundation for the National Capital Region, <i>Director</i> Member of the Council of Foreign Relations Member of the National Park Foundation

Board members are elected to serve for an indefinite term. The Fund has standing audit, nominating and compensation committees, each comprised of its Board members who are not “interested persons” of the Fund, as defined in the 1940 Act. The function of the audit committee is to (i) oversee the Fund’s accounting and financial reporting processes and the audit of the Fund's financial statements and (ii) to assist in the Board's oversight of the integrity of the Fund's financial statements, the Fund's compliance with legal and regulatory requirements and the independent registered public accounting firm’s qualifications, independence and performance. The Fund's nominating committee is responsible for selecting and nominating persons as members of the Board for election or appointment by the Board and for election by shareholders. In evaluating potential nominees, including any nominees recommended by shareholders, the committee takes into consideration various factors listed in the nominating committee charter, including charter and integrity, business and professional experience, and whether the committee believes the person has the ability to apply sound and independent business judgment and would act in the interest of the Fund and its shareholders. The nominating committee will consider recommendations for nominees from shareholders submitted to the Secretary of the Fund, c/o the Dreyfus Corporation Legal Department, 200 Park Avenue, 8th Floor East, New York, New York 10166, which includes information regarding the recommended nominee as specified in the nominating committee charter. The function of the compensation committee is to establish the appropriate compensation for serving on the Board. The Fund also has a standing pricing committee comprised of any one Board member. The function of the pricing committee is to assist in valuing the Fund’s investments. The audit committee met four times and the compensation, nominating and pricing committees did not meet during the fiscal year ended December 31, 2007.

The table below indicates the dollar range of each Board member’s ownership of Fund shares and shares of other funds in the Dreyfus Family of Funds for which he or she is a Board member, in each case as of December 31, 2007.

<u>Name of Board Member</u>	<u>Dreyfus Stock Index Fund</u>	<u>Aggregate Holding of Funds in the Dreyfus Family of Funds for which Responsible as a Board Member</u>
Joseph S. DiMartino	None	Over \$100,000
Peggy C. Davis	None	\$10,001 – 50,000
David P. Feldman	None	Over \$100,000
James F. Henry	None	Over \$100,000
Ehud Houminer	None	Over \$100,000
Gloria Messinger	None	Over \$100,000
Dr. Martin Peretz	None	\$1 – 10,000
Anne Wexler	None	None

As of December 31, 2007, none of the Board members or their immediate family members owned securities of Dreyfus, Mellon Cap, the Distributor or any person (other than a registered investment company) directly or indirectly controlling, controlled by or under common control with Dreyfus, Mellon Cap or the Distributor.

The Company and 13 other funds (comprised of 43 portfolios) in the Dreyfus Family of Funds pay each Board member their respective allocated portion of an annual retainer of \$85,000, and a fee of \$10,000 for each regularly scheduled Board meeting attended, \$2,000 for separate in-person committee meetings attended which are not held in conjunction with a regularly scheduled Board meeting and \$1,000 for Board meetings and separate committee meetings attended that are conducted by telephone. The Chairman of the Board receives an additional 25% of such compensation and the audit committee chairman receives an additional \$15,000 per annum. The Company also reimburses each Board member for travel and out of pocket expenses in connection with attending Board or committee meetings. Emeritus Board members are entitled to receive an annual retainer and a per meeting attended fee of one-half the amount paid to them as Board members. The aggregate amount of compensation paid to each Board member by the Company for the fiscal year ended December, 2007, and by all funds in the Dreyfus Family of Funds for which such person is a Board member (the number of portfolios of such funds is set forth in parenthesis next to each Board member's total compensation) for the year ended December 31, 2007, was as follows:

<u>Name of Board Member</u>	<u>Aggregate Compensation From the Fund*</u>	<u>Total Compensation From the Fund and Fund Complex Paid to Board Member**</u>
Joseph S. DiMartino	\$22,956	\$819,865 (196)
Peggy C. Davis	\$18,386	\$243,500 (81)
David P. Feldman	\$20,434	\$204,713 (60)
John M. Fraser, Jr. ⁺	\$2,275	\$32,500 (49)
James F. Henry	\$18,363	\$138,000 (49)
Ehud Houminer	\$18,363	\$223,500 (79)
Dr. Paul A. Marks ⁺⁺	\$9,191	\$69,500 (49)
Gloria Messinger	\$18,386	\$140,000 (49)
Dr. Martin Peretz ⁷	\$17,070	\$130,000(49)
Anne Wexler	\$18,386	\$193.213 (60)

* Amount does not include the cost of office space, secretarial services and health benefits for the Chairman and expenses reimbursed to Board members for attending Board meetings, which in the aggregate amounted to \$6,096.

** Represents the number of separate portfolios comprising the investment companies in the Fund Complex, including the Fund, for which the Board member serves.

+ Emeritus Board member as of May 24, 2000.

++ Emeritus Board member as of December 31, 2006.

Officers of the Fund

J. DAVID OFFICER, President since December 2006. Chief Operating Officer, Vice Chairman and a director of the Manager, and an officer of 78 investment companies (comprised of

163 portfolios) managed by the Manager. He is 59 years old and has been an employee of the Manager since April 1998.

PHILLIP N. MAISANO, Executive Vice President since July 2007. Chief Investment Officer, Vice Chair and a director of the Manager, and an officer of 78 investment companies (comprised of 163 portfolios) managed by the Manager. Mr. Maisano also is an officer and/or board member of certain other investment management subsidiaries of The Bank of New York Mellon Corporation, each of which is an affiliate of the Manager. He is 60 years old and has been an employee of the Manager since November 2006. Prior to joining the Manager, Mr. Maisano served as Chairman and Chief Executive Officer of EACM Advisors, an affiliate of the Manager, since August 2004, and served as Chief Executive Officer of Evaluation Associates, a leading institutional investment consulting firm, from 1988 until 2004.

MICHAEL A. ROSENBERG, Vice President and Secretary since September 2003. Associate General Counsel of the Manager, and an officer of 79 investment companies (comprised of 180 portfolios) managed by the Manager. He is 48 years old and has been an employee of the Manager since October 1991.

JAMES BITETTO, Vice President and Assistant Secretary since August 2005. Associate General Counsel and Secretary of the Manager, and an officer of 79 investment companies (comprised of 180 portfolios) managed by the Manager. He is 41 years old and has been an employee of the Manager since December 1996.

JONI LACKS CHARATAN, Vice President and Assistant Secretary since August 2005. Associate General Counsel of the Manager, and an officer of 79 investment companies (comprised of 180 portfolios) managed by the Manager. She is 52 years old and has been an employee of the Manager since October 1988.

JOSEPH M. CHIOFFI, Vice President and Assistant Secretary since August 2005. Associate General Counsel of the Manager, and an officer of 79 investment companies (comprised of 180 portfolios) managed by the Manager. He is 46 years old and has been an employee of the Manager since June 2000.

JANETTE E. FARRAGHER, Vice President and Assistant Secretary since August 2005. Associate General Counsel of the Manager, and an officer of 79 investment companies (comprised of 180 portfolios) managed by the Manager. She is 45 years old and has been an employee of the Manager since February 1984.

JOHN B. HAMMALIAN, Vice President and Assistant Secretary since August 2005. Associate General Counsel of the Manager, and an officer of 79 investment companies (comprised of 180 portfolios) managed by the Manager. He is 44 years old and has been an employee of the Manager since February 1991.

ROBERT R. MULLERY, Vice President and Assistant Secretary since August 2005. Associate General Counsel of the Manager, and an officer of 79 investment companies (comprised

of 180 portfolios) managed by the Manager. He is 56 years old and has been an employee of the Manager since May 1986.

JEFF PRUSNOFSKY, Vice President and Assistant Secretary since September 2003. Associate General Counsel of the Manager, and an officer of 79 investment companies (comprised of 180 portfolios) managed by the Manager. He is 42 years old and has been an employee of the Manager since October 1990.

JAMES WINDELS, Treasurer since September 2003. Director-Mutual Fund Accounting of the Manager, and an officer of 79 investment companies (comprised of 180 portfolios) managed by the Manager. He is 49 years old and has been an employee of the Manager since April 1985.

RICHARD CASSARO, Assistant Treasurer since January 2007 Senior Accounting Manager – Money Market and Municipal Bond Funds of the Manager, and an officer of 79 investment companies (comprised of 180 portfolios) managed by the Manager. He is 49 years old and has been an employee of the Manager since 1982.

ROBERT SVAGNA, Assistant Treasurer since September 2003. Senior Accounting Manager – Equity Funds of the Manager, and an officer of 79 investment companies (comprised of 180 portfolios) managed by the Manager. He is 40 years old and has been an employee of the Manager since November 1990.

GAVIN C. REILLY, Assistant Treasurer since December 2005. Tax Manager of the Investment Accounting and Support Department of the Manager, and an officer of 79 investment companies (comprised of 180 portfolios) managed by the Manager. He is 39 years old and has been an employee of the Manager since April 1991.

ROBERT S. ROBOL, Assistant Treasurer since August 2005. Senior Accounting Manager – Fixed Income Funds of the Manager, and an officer of 79 investment companies (comprised of 180 portfolios) managed by the Manager. He is 43 years old and has been an employee of the Manager since October 1988.

ROBERT SALVILOLO, Assistant Treasurer since July 2007. Senior Accounting Manager – Equity Funds of the Manager, and an officer of 79 investment companies (comprised of 180 portfolios) managed by the Manager. He is 40 years old and has been an employee of the Manager since June 1989.

WILLIAM GERMENIS, Anti-Money Laundering Compliance Officer since September 2003. Vice President and Anti-Money Laundering Compliance Officer of the Distributor, and the Anti-Money Laundering Compliance Officer of 75 investment companies (comprised of 176 portfolios) managed by the Manager. He is 37 years old and has been an employee of the Distributor since October 1998.

JOSEPH W. CONNOLLY, Chief Compliance Officer since October 2004. Chief Compliance Officer of the Manager and The Dreyfus Family of Funds (79 investment companies,

comprised of 180 portfolios). From November 2001 through March 2004, Mr. Connolly was first Vice-President, Mutual Fund Servicing for Mellon Global Securities Services. In that capacity, Mr. Connolly was responsible for managing Mellon's Custody, Fund Accounting and Fund Administration services to third-party mutual fund clients. He is 50 years old and has served in various capacities with the Manager since 1980, including manager of the firm's Fund Accounting Department from 1997 through October 2001.

The address of each Board member and officer of the Fund is 200 Park Avenue, New York, New York 10166.

Board members and officers, as a group, owned less than 1% of the Fund's shares outstanding on March 30, 2008. See "Information About the Fund" for a list of shareholders known by the Fund to own of record 5% or more of the Fund's outstanding voting securities as of March 30, 2008.

MANAGEMENT ARRANGEMENTS

Manager. The Manager is a wholly-owned subsidiary of The Bank of New York Mellon Corporation ("BNY Mellon"), a global financial services company focused on helping clients move and manage their financial assets, operating in 34 countries and serving more than 100 markets. BNY Mellon is a leading provider of financial services for institutions, corporations and high-net-worth individuals, providing asset and wealth management, asset servicing, issuer services, and treasury services through a worldwide client-focused team.

Dreyfus provides management services pursuant to the Management Agreement (the "Management Agreement") between the Fund and Dreyfus. The Management Agreement is subject to annual approval by (i) the Fund's Board or (ii) vote of a majority (as defined in the 1940 Act) of the outstanding voting securities of the Fund, provided that in either event the continuance also is approved by a majority of the Board members who are not "interested persons" (as defined in the 1940 Act) of the Fund or Dreyfus by vote cast in person at a meeting called for the purpose of voting on such approval. The Management Agreement is terminable without penalty, on 60 days' notice, by the Fund's Board or by vote of the holders of a majority of the Fund's shares, or, upon not less than 90 days' notice, by Dreyfus. The Management Agreement will terminate automatically in the event of its assignment (as defined in the 1940 Act).

The following persons are officers and/or directors of the Manager: Jonathan Little, Chair of the Board; Jonathan Baum, Chief Executive Officer and a director; J. Charles Cardona, President and a director; Diane P. Durnin, Vice Chair and a director; Phillip N. Maisano, Chief Investment Officer, Vice Chair and a director; J. David Officer, Chief Operating Officer, Vice Chair and a director; Patrice M. Kozlowski, Senior Vice President-Corporate Communications; Jill Gill, Vice President-Human Resources; Anthony Mayo, Vice President-Information Systems; Theodore A. Schachar, Vice President-Tax; John E. Lane, Vice President; Jeanne M. Login, Vice President; Gary Pierce, Controller; Joseph W. Connolly, Chief Compliance Officer; James Bitetto, Secretary; and Mitchell E. Harris, Ronald P. O'Hanley III and Scott E. Wennerholm,

directors.

The Company, the Manager, Mellon Cap and the Distributor have each adopted a Code of Ethics that permits its personnel, subject to such code, to invest in securities, including securities that may be purchased or held by the Fund. Dreyfus' Code of Ethics subjects its employees' personal securities transactions to various restrictions to ensure that such trading does not disadvantage any fund advised by Dreyfus. In that regard, portfolio managers and other investment personnel of Dreyfus must preclear and report their personal securities transactions and holdings, which are reviewed for compliance with the Code of Ethics and are also subject to the oversight of BNY Mellon's Investment Ethics Committee. Portfolio managers and other investment personnel who comply with the Code of Ethics preclearance and disclosure procedures of the Code of Ethics and the requirements of the Committee, may be permitted to purchase, sell or hold securities which also may be or are held in fund(s) they manage or for which they otherwise provide investment advice.

Dreyfus maintains office facilities on behalf of the Fund, and furnishes the Fund statistical and research data, clerical help, accounting, data processing, bookkeeping and internal auditing and certain other required services to the Fund. Dreyfus, from time to time, may make payments from its own assets, including past profits but not including the management fees paid by the Portfolios, to Participating Insurance Companies in connection with the provision of certain administrative services to one or more Portfolios or servicing and/or maintaining shareholder accounts. Dreyfus also may make such advertising and promotional expenditures, using its own resources, as it from time to time deems appropriate.

Index Fund Manager. Mellon Cap provides investment advisory assistance and day-to-day management of the Fund's investments pursuant to the Index Management Agreement (the "Index Management Agreement") between Mellon Cap and Dreyfus. The Index Management Agreement is subject to annual approval by (i) the Fund's Board or (ii) vote of a majority (as defined in the 1940 Act) of the Fund's outstanding voting securities, provided that in either event the continuance also is approved by a majority of the Fund's Board members who are not "interested persons" (as defined in the 1940 Act) of the Fund or Mellon Cap, by vote cast in person at a meeting called for the purpose of voting on such approval. The Index Management Agreement is terminable without penalty (i) by Dreyfus on 60 days' notice, (ii) by the Fund's Board or by vote of the holders of a majority of the Fund's shares on 60 days' notice, or (iii) by Mellon Cap on not less than 90 days' notice. The Index Management Agreement will terminate automatically in the event of its assignment (as defined in the 1940 Act) or upon the termination of the Management Agreement for any reason.

The following persons are executive officers and/or directors of Mellon Cap: Thomas Loeb, Chairman of the Board of Directors; Charles J. Jacklin, President, Chief Executive Officer and a director; James R. Tufts, Executive Vice President; Brenda J. Oakley, Executive Vice President and Chief Administrative Officer; Thomas Hazuka, Vice Chairman; William Rydell, Vice Chairman, William L. Fouse, Chairman Emeritus, Vikas Oswal, Executive Vice President and Chief Investment Strategist; Michael Ho, Chief Investment Officer, Gabriela F. Parcella, Executive Vice President and Chief Operating Officer, and Phil Maisano, Ronald P. O'Hanley III and Scott E. Wennerholm, directors.

Mellon Cap provides day-to-day management of the Fund's investments in accordance with the stated policies of the Fund, subject to the supervision of Dreyfus and approval of the Fund's Board. Mellon Cap has agreed to pay for the custody services provided to the Fund by Mellon Trust of New England, N.A. (the "Custodian").

Portfolio Management. Dreyfus manages the Fund's investments in accordance with the stated policies of the Fund, subject to the approval of the Fund's Board. Mellon Cap provides day-to-day management of the Fund's investments subject to the supervision of Dreyfus and the Fund's Board. The Fund's portfolio manager is Thomas Durante.

Portfolio Manager Compensation. The portfolio managers responsible for managing mutual funds are generally eligible for compensation consisting of base salary, bonus, and payments under Mellon Capital's long-term incentive compensation program. All compensation is paid by Mellon Capital and not by the mutual funds. The same methodology described below is used to determine portfolio manager compensation with respect to the management of mutual funds and other accounts.

Mutual fund portfolio managers are also eligible for the standard retirement benefits and health and welfare benefits available to all Mellon Capital employees. Certain portfolio managers may be eligible for additional retirement benefits under several supplemental retirement plans that Mellon Capital provides to restore dollar-for-dollar the benefits of management employees that had been cut back solely as a result of certain limits due to the tax laws. These plans are structured to provide the same retirement benefits as the standard retirement benefits. In addition, mutual fund portfolio managers whose compensation exceeds certain limits may elect to defer a portion of their salary and/or bonus under the Mellon Financial Corporation deferred compensation plan.

A portfolio manager's base salary is determined by the manager's experience and performance in the role, taking into account the ongoing compensation benchmark analyses. A portfolio manager's base salary is generally a fixed amount that may change as a result of an annual review, upon assumption of new duties, or when a market adjustment of the position occurs.

A portfolio manager's bonus is determined by a number of factors. One factor is performance of the mutual fund relative to expectations for how the mutual fund should have performed, given its objectives, policies, strategies and limitations, and the market environment during the measurement period. Additional factors include the overall financial performance of Mellon Capital, the performance of all accounts (relative to expectations) for which the portfolio manager has responsibility, the portfolio manager's contributions to the investment management functions within the sub-asset class, contributions to the development of other investment professionals and supporting staff, and overall contributions to strategic planning and decisions for the investment management group. The target bonus is expressed as a percentage of base salary. The actual bonus paid may be more or less than the target bonus, based on how well the manager satisfies the objectives stated above. The bonus is paid on an annual basis.

Under the long-term incentive compensation program, certain portfolio managers are eligible to receive a payment from Mellon Capital's long-term incentive compensation plan based on their years of service, job level and, if applicable, management responsibilities. Each year, a portion of the firm's profits is allocated to the long-term incentive compensation award. The annual awards are paid after three years.

Additional Information About Portfolio Managers. The following table lists the number and types of other accounts advised by the Fund's primary portfolio manager and assets under management in those accounts as of the end of the Fund's fiscal year, December 31, 2007:

<u>Portfolio Manager</u>	<u>Registered Investment Company Accounts</u>	<u>Assets Managed</u>	<u>Pooled Accounts</u>	<u>Assets Managed</u>	<u>Other Accounts</u>	<u>Assets Managed</u>
Thomas Durante	12	\$11.5 B	3	\$218.7 M	10	\$735.3 M

None of the funds or accounts managed by Mr. Durante are subject to a performance-based advisory fee.

The dollar range of Fund shares beneficially owned by the primary portfolio manager as of the end of the Fund's fiscal year is as follows:

<u>Portfolio Manager</u>	<u>Fund Name</u>	<u>Dollar Range of Fund Shares Beneficially Owned</u>
Thomas Durante	Dreyfus Stock Index Fund, Inc.	None

Portfolio managers at Dreyfus may manage multiple accounts for a diverse client base, including mutual funds, separate accounts (assets managed on behalf of institutions such as pension funds, insurance companies and foundations), bank common trust accounts and wrap fee programs ("Other Accounts").

Potential conflicts of interest may arise because of Dreyfus' management of the Fund and Other Accounts. For example, conflicts of interest may arise with both the aggregation and allocation of securities transactions and allocation of limited investment opportunities, as Dreyfus may be perceived as causing accounts it manages to participate in an offering to increase Dreyfus' overall allocation of securities in that offering, or to increase Dreyfus' ability to participate in future offerings by the same underwriter or issuer. Allocations of bunched trades, particularly trade orders that were only partially filled due to limited availability and allocation of investment opportunities generally, could raise a potential conflict of interest, as Dreyfus may have an incentive to allocate securities that are expected to increase in value to preferred accounts. Initial public offerings ("IPOs"), in particular, are frequently of very limited availability. Additionally, portfolio managers may be perceived to have a conflict of interest if there are a large number of Other Accounts, in addition to the Fund, that they are managing on behalf of Dreyfus. Dreyfus periodically reviews each portfolio manager's overall responsibilities to ensure that he or she is able to allocate the necessary time and resources to effectively manage the Fund. In addition, Dreyfus could be viewed as having a conflict of interest to the extent that Dreyfus or its affiliates and/or portfolios managers have a materially

larger investment in Other Accounts than their investment in the Fund.

Other Accounts may have investment objectives, strategies and risks that differ from those of the Fund. For these or other reasons, the portfolio manager may purchase different securities for the Fund and the Other Accounts, and the performance of securities purchased for the Fund may vary from the performance of securities purchased for Other Accounts. The portfolio manager may place transactions on behalf of Other Accounts that are directly or indirectly contrary to investment decisions made for the Fund, which could have the potential to adversely impact the Fund, depending on market conditions.

A potential conflict of interest may be perceived to arise if transactions in one account closely follow related transactions in another account, such as when a purchase increases the value of securities previously purchase by the other account, or when a sale in one account lowers the sale price received in a sale by a second account.

Dreyfus' goal is to provide high quality investment services to all of its clients, while meeting Dreyfus' fiduciary obligation to treat all clients fairly. Dreyfus has adopted and implemented policies and procedures, including brokerage and trade allocation policies and procedures that it believes address the conflicts associated with managing multiple accounts for multiple clients. In addition, Dreyfus monitors a variety of areas, including compliance with Fund guidelines, the allocation of IPOs, and compliance with the firm's Code of Ethics. Furthermore, senior investment and business personnel at Dreyfus periodically review the performance of the portfolio managers for Dreyfus-managed funds.

Expenses. All expenses incurred in the operation of the Fund are borne by the Fund, except to the extent specifically assumed by Dreyfus and/or Mellon Cap. The expenses borne by the Fund include: taxes, interest, loan commitment fees, interest and distributions paid on securities sold short, brokerage fees and commissions, if any, fees of Board members who are not officers, directors, employees or holders of 5% or more of the outstanding voting securities of Dreyfus or Mellon Cap or any of their affiliates, SEC fees, state Blue Sky qualification fees, advisory fees, transfer and dividend disbursing agents' fees, certain insurance premiums, industry association fees, outside auditing and legal expenses, costs of independent pricing services, costs of maintaining the Fund's existence, costs attributable to investor services (including, without limitation, telephone and personnel expenses), costs of preparing and printing prospectuses and statements of additional information for regulatory purposes and for distribution to existing shareholders, costs of shareholder's reports and meetings, and any extraordinary expenses. In addition, each class of shares bears any class specific expenses allocated to such class, such as expenses related to the distribution and/or shareholder servicing of such class. The Fund's Initial shares are subject to an annual shareholder services fee (see "Shareholder Services Plan (Initial Shares Only)") and the Fund's Service shares are subject to an annual distribution fee (see "Distribution Plan (Service Shares Only)").

As compensation for Dreyfus' services, the Fund has agreed to pay Dreyfus a monthly fee at the annual rate of 0.25% of the value of the Fund's average daily net assets. As compensation for Mellon Cap services, Dreyfus has agreed to pay Mellon Cap a monthly fee at the annual rate of 0.06% of the value of the Fund's average daily net assets. All fees and

expenses are accrued daily and deducted before declaration of dividends to shareholders. For the fiscal years ended December 31, 2007, 2006 and 2005, the Fund paid Dreyfus management fees of \$9,078,491, \$10,061,215 and \$10,426,789, respectively, and Dreyfus paid Mellon Cap index management fees of \$2,211,652, \$2,331,986 and \$2,376,750, respectively.

The aggregate fee payable to Dreyfus and Mellon Cap is not subject to reduction as the value of the Fund's net assets increases.

Distributor. The Distributor, a wholly-owned subsidiary of Dreyfus located at 200 Park Avenue, New York, New York 10166, serves as the Fund's distributor on a best efforts basis pursuant to an agreement with the Fund which is renewable annually. The Distributor also acts as distributor for the other funds in the Dreyfus Family of Funds, Mellon Funds Trust and Mellon Institutional Funds. Before June 30, 2007, the Distributor was known as "Dreyfus Service Corporation."

The Manager or the Distributor may provide cash payments out of its own resources to Participating Insurance Companies and other financial intermediaries that sell shares of the Funds or provide other services. Such payments are separate from any 12b-1 fees and/or shareholder services fees or other expenses paid by the Funds to the intermediaries. Because those payments are not made by you or the Fund, the Fund's expense ratio will not be affected by any such payments. These additional payments may be made to Participating Insurance Companies and other financial intermediaries, including affiliates, that provide shareholder servicing, sub-administration, recordkeeping and/or sub-transfer agency services, marketing support and/or access to sales meetings, sales representatives and management representatives of the Participating Insurance Companies. Cash compensation also may be paid from the Manager's or the Distributor's own resources to Participating Insurance Companies for inclusion of a Fund on a sales list, including a preferred or select sales list or in other sales programs. These payments sometimes are referred to as "revenue sharing." From time to time, the Manager or the Distributor also may provide cash or non-cash compensation to Participating Insurance Companies in the form of: occasional gifts; occasional meals, tickets, or other entertainment; support for due diligence trips; educational conference sponsorship; support for recognition programs; and other forms of cash or non-cash compensation permissible under broker-dealer regulations. In some cases, these payments or compensation may create an incentive for the Participating Insurance Company to recommend or sell shares of the Fund to you. Please contact your Participating Insurance Company for details about any payments it may receive in connection with the sale of Fund shares or the provision of services to the Funds.

Transfer and Dividend Disbursing Agent and Custodian. Dreyfus Transfer, Inc. (the "Transfer Agent"), a wholly-owned subsidiary of Dreyfus, 200 Park Avenue, New York, New York 10166, is the Fund's transfer and dividend disbursing agent. Under a transfer agency agreement with the Fund, the Transfer Agent arranges for the maintenance of shareholder account records for the Fund, the handling of certain communications between shareholders and the Fund and the payment of dividends and distributions payable by the Fund. For these services, the Transfer Agent receives a monthly fee computed on the basis of the number of

shareholder accounts it maintains for the Fund during the month, and is reimbursed for certain out-of-pocket expenses. Dreyfus pays the Fund's transfer agency fees.

The Custodian, an indirect subsidiary of BNY Mellon, One Boston Place, Boston, Massachusetts 02108, is the Fund's custodian. Under a custody agreement with the Fund, the Custodian holds the Fund's securities and keeps all necessary accounts and records. For its custody services, the Custodian receives a monthly fee based on the market value of the Fund's domestic assets held in custody and receives certain securities transactions charges. The Custodian's fees for its services to the Fund are paid by Mellon Cap.

HOW TO BUY SHARES

The Fund offers two classes of shares – Initial shares and Service shares. The classes are identical, except as to the expenses borne by each class which may affect performance. See “Shareholder Services Plan (Initial Shares Only)” and “Distribution Plan (Service Shares Only).” Fund shares currently are offered only to separate accounts of Participating Insurance Companies. **Individuals may not place purchase orders directly with the Fund.**

As discussed under "Management Arrangements—Distributor," Participating Insurance Companies may receive revenue sharing payments from Dreyfus or the Distributor. The receipt of such payments could create an incentive for a Participating Insurance Company to recommend or sell shares of the Fund instead of other mutual funds where such payments are not received. Please contact your Participating Insurance Company to recommend or sell shares of the Fund instead of other mutual funds where such payments are not received. Please contact your Participating Insurance Company for details about any payments it may receive in connection with the sale of Fund shares or the provision of services to the Fund.

Separate accounts of the Participating Insurance Companies place orders based on, among other things, the amount of premium payments to be invested pursuant to Policies. See the prospectus of the separate account of the applicable Participating Insurance Company for more information on the purchase of Fund shares, including the class of Fund shares available for investment. The Fund does not issue share certificates.

Purchase orders from separate accounts based on premiums and transaction requests received by the Participating Insurance Company on a given business day in accordance with procedures established by the Participating Insurance Company will be effected at the net asset value of the Fund determined on such business day if the orders are received by the Fund in proper form and in accordance with applicable requirements on the next business day and Federal Funds (monies of member banks within the Federal Reserve System which are held on deposit at a Federal Reserve Bank) in the net amount of such orders are received by the Fund on the next business day in accordance with applicable requirements. It is each Participating Insurance Company's responsibility to properly transmit purchase orders and Federal Funds in accordance with applicable requirements. Policyholders should refer to the prospectus for their Policies in this regard.

Fund shares are sold on a continuous basis. Net asset value per share is determined as of the close of trading on the floor of the New York Stock Exchange on each day the New York Stock Exchange is open for regular business. For purposes of determining net asset value, certain futures contracts may be valued 15 minutes after the close of trading on the floor of the New York Stock Exchange. Net asset value per share of each class of shares is computed by dividing the value of the Fund's net assets represented by such class (i.e., the value of its assets less liabilities) by the total number of shares of such class outstanding. For information regarding the methods employed in valuing the Fund's investments, see "Determination of Net Asset Value."

DISTRIBUTION PLAN (SERVICE SHARES ONLY)

Rule 12b-1 (the "Rule") adopted by the SEC under the 1940 Act provides, among other things, that an investment company may bear expenses of distributing its shares only pursuant to a plan adopted in accordance with the Rule. The Fund's Board has adopted such a plan (the "Distribution Plan") with respect to the Fund's Service shares pursuant to which the Fund pays the Distributor at an annual rate of 0.25% of the value of the Fund's average daily net assets attributable to Service shares for distributing Service shares, for advertising and marketing related to Service shares and for servicing and/or maintaining accounts of Service class shareholders. Under the Distribution Plan, the Distributor may make payments to Participating Insurance Companies and the broker-dealers acting as principal underwriter for their variable insurance products in respect of these services. The fees payable under the Distribution Plan are payable without regard to actual expenses incurred. The Board believes that there is a reasonable likelihood that the Distribution Plan will benefit the Fund and the holders of its Service shares.

A quarterly report of the amounts expended under the Distribution Plan, and the purposes for which such expenditures were incurred, must be made to the Fund's Board for its review. In addition, the Distribution Plan provides that it may not be amended to increase materially the costs which holders of Service shares may bear pursuant to the Distribution Plan without the approval of the holders of such class of shares and that other material amendments of the Distribution Plan must be approved by the Board, and by the Board members who are not "interested persons" (as defined in the 1940 Act) of the Fund and have no direct or indirect financial interest in the operation of the Distribution Plan or in any agreements entered into in connection with the Distribution Plan, by vote cast in person at a meeting called for the purpose of considering such amendments. The Distribution Plan is subject to annual approval by such vote of the Board members cast in person at a meeting called for the purpose of voting on the Distribution Plan. The Distribution Plan may be terminated at any time by vote of a majority of the Board members who are not "interested persons" and have no direct or indirect financial interest in the operation of the Distribution Plan or in any agreements entered into in connection with the Distribution Plan or by vote of the holders of a majority of the Fund's Service shares.

For the fiscal year ended December 31, 2007, the Fund, with respect to its Service shares, paid \$1,468,294 to the Distributor pursuant to the Distribution Plan.

SHAREHOLDER SERVICES PLAN (INITIAL SHARES ONLY)

The Fund has adopted a Shareholder Services Plan for its Initial shares pursuant to which the Fund reimburses the Distributor an amount not to exceed an annual rate of 0.25% of the value of the average daily net assets attributable to Initial shares for certain allocated expenses with respect to servicing and/or maintaining accounts of Initial class shareholders.

A quarterly report of the amounts expended under the Plan, and the purposes for which such expenditures were incurred, must be made to the Fund's Board for its review. In addition, the Shareholder Services Plan provides that material amendments of the Plan must be approved by the Fund's Board and by the Board members who are not "interested persons" (as defined in the 1940 Act) of the Fund and have no direct or indirect financial interest in the operation of the Shareholder Services Plan, by vote cast in person at a meeting called for the purpose of considering such amendments. The Shareholder Services Plan is subject to annual approval by such vote of the Board members cast in person at a meeting called for the purpose of voting on the Shareholder Services Plan. The Plan is terminable at any time by vote of a majority of the Board members who are not "interested persons" (as defined in the 1940 Act) of the Fund and have no direct or indirect financial interest in the operation of the Shareholder Services Plan.

For the fiscal year ended December 31, 2007, the Fund, with respect to its Initial shares, paid the Distributor \$22,223 under the Shareholder Services Plan.

HOW TO REDEEM SHARES

General. Fund shares may be redeemed at any time by the separate accounts of the Participating Insurance Companies. **Individuals may not place redemption orders directly with the Fund.** Redemption requests received by the Participating Insurance Company from separate accounts on a given business day in accordance with procedures established by the Participating Insurance Company will be effected at the net asset value of the Fund determined on such business day if the requests are received by the Fund in proper form and in accordance with applicable requirements on the next business day. It is each Participating Insurance Company's responsibility to properly transmit redemption requests in accordance with applicable requirements. Policyholders should consult their Policy prospectus in this regard. To maximize the Fund's ability to track the Index, shareholders are urged to transmit redemption requests so that they may be received by the Fund or its agent prior to 12:00 noon, Eastern time, on the day upon which separate accounts of Participating Insurance Companies want their redemption requests to be effective. The value of the shares redeemed may be more or less than their original cost, depending on the Fund's then-current net asset value. No charges are imposed by the Fund when shares are redeemed.

The Fund ordinarily will make payment for all shares redeemed within seven days after receipt by the Transfer Agent of a redemption request in proper form, except as provided by the rules of the SEC.

Should any conflict between VA contract holders and VLI policyholders arise which would require that a substantial amount of assets be withdrawn from the Fund, orderly portfolio management could be disrupted to the potential detriment of shareholders.

Redemption Commitment. The Fund has committed to pay in cash all redemption requests by any shareholder of record, limited in amount during any 90-day period to the lesser of \$250,000 or 1% of the value of the Fund's net assets at the beginning of such period. Such commitment is irrevocable without the prior approval of the SEC. In the case of requests for redemption in excess of such amount, the Fund's Board reserves the right to make payments in whole or part in securities or other assets of the Fund in case of an emergency or any time a cash distribution would impair the liquidity of the Fund to the detriment of the existing shareholders. In such event, the securities would be valued in the same manner as the Fund's portfolio is valued. If the recipient sold such securities, brokerage charges would be incurred.

Suspension of Redemptions. The right of redemption may be suspended or the date of payment postponed (a) during any period when the New York Stock Exchange is closed (other than customary weekend and holiday closings), (b) when trading in the markets the Fund ordinarily utilizes is restricted, or when an emergency exists as determined by the SEC so that disposal of the Fund's investments or determination of its net asset value is not reasonably practicable or (c) for such other periods as the SEC by order may permit to protect the Fund's shareholders.

EXCHANGE PRIVILEGE

Investors can exchange shares of a class for shares of the same class of any other fund or portfolio managed by Dreyfus that is offered only to separate accounts established by Participating Insurance Companies to fund Policies, or into shares of any such money market portfolio, subject to the terms and conditions relating to exchanges set forth in the applicable Participating Insurance Company prospectus. Policyholders should refer to the applicable Participating Insurance Company prospectus for more information on exchanging Fund shares. The Fund reserves the right to modify or discontinue its exchange program at any time upon 60 days' notice to the Participating Insurance Company.

DETERMINATION OF NET ASSET VALUE

Valuation of Portfolio Securities. The Fund's portfolio securities are valued at the last sale price on the securities exchange or national securities market on which such securities are primarily traded. For this purpose, the official closing price on a securities exchange or national securities market shall be the last sale price. Securities not listed on an exchange or national securities market, or securities in which there were no transactions, are valued at the average of the most recent bid and asked prices, except in the case of open short positions where the asked price is used for valuation purposes. Bid price is used when no asked price is available. Market quotations for foreign securities in foreign currencies are translated into U.S. dollars at the prevailing rates of exchange. Certain short-term investments may be carried at amortized cost, which approximates value. Any securities or other assets for which recent market quotations are not readily available are valued at fair value as determined in good faith by the Fund's Board. Expenses and fees of a fund, including the advisory fees and any fees pursuant to the Distribution Plan, are accrued daily and taken into account for the purpose of determining the net asset value of the Fund's shares.

Restricted securities, as well as securities or other assets for which recent market quotations or official closing prices are not readily available or are determined by the Dreyfus not to reflect accurately fair value (such as when the value of a security has been materially affected by events occurring after the close of the exchange or market on which the security is principally traded (for example, a foreign exchange or market) but after the Fund calculates its NAV), are valued at fair value as determined in good faith based on procedures approved by the Board. Fair value of investments may be determined by the Fund's Board, its pricing committee or its valuation committee in good faith using such information as it deems appropriate. The factors that may be considered when fair valuing a security include fundamental analytical data, the nature and duration of restrictions on disposition, an evaluation of the forces that influence the market in which the securities are purchased or sold, and public trading in similar securities of the issuer or comparable issuers. Fair value of foreign equity securities may be determined with the assistance of a pricing service using correlations between the movement of prices of foreign securities and indices of domestic securities and other appropriate indicators, such as closing market prices of relevant ADRs and futures contracts. The valuation of a security based on a fair value procedures may differ from the security's most recent closing price, and from the prices used by other mutual funds to calculate their net asset values. Foreign securities held by the Fund may trade on days that the Fund is not open for business, thus affecting the value of the Fund's assets on days when Fund investors have no access to the Fund. Restricted securities which are, or are convertible into, other securities of the same class of securities for which a public market exists usually will be valued at market value less the same percentage discount at which such restricted securities were purchased. This discount will be revised by the Board, if the Board members believe that it no longer reflects the value of the restricted securities. Restricted securities not of the same class as securities for which a public market exists usually will be valued initially at cost. Any subsequent adjustment from cost will be based upon considerations deemed relevant by the Fund's Board.

New York Stock Exchange Closings. The holidays (as observed) on which the New York Stock Exchange is closed currently are: New Year's Day, Martin Luther King Jr. Day, Presidents' Day, Good Friday, Memorial Day, Independence Day, Labor Day, Thanksgiving and Christmas.

DIVIDENDS, DISTRIBUTIONS AND TAXES

Management of the Fund believes that the Fund has qualified as a "regulated investment company" under the Code, for its most recent fiscal year. The Fund intends to continue to so qualify so long as such qualification is in the best interests of its shareholders. Qualification as a regulated investment company relieves the Fund from any liability for Federal income taxes to the extent its earnings are distributed in accordance with the applicable provisions of the Code. To qualify as a regulated investment company, the Fund must distribute at least 90% of its net income (consisting of net investment income and net short-term capital gain) to its shareholders and meet certain asset diversification and other requirements. If the Fund does not qualify as a regulated investment company, it will be subject to the general rules governing the Federal income taxation of corporations under the Code. The term "regulated investment company" does not imply the supervision of management or investment practices or policies by any government agency.

Section 817(h) of the Code requires that the investments of a segregated asset account of an insurance company be "adequately diversified" as provided therein or in accordance with U.S. Treasury Regulations, in order for the account to serve as the basis for VA contracts or VLI policies. Section 817(h) and the U.S. Treasury Regulations issued thereunder provide the manner in which a segregated asset account will treat investments in a regulated investment company for purposes of the diversification requirements. If the Fund satisfies certain conditions, a segregated asset account owning shares of the Fund will be treated as owning multiple investments consisting of the account's proportionate share of each of the assets of the Fund. The Fund intends to satisfy these conditions so that the shares of the Fund owned by a segregated asset account of a Participating Insurance Company will be treated as multiple investments. Further, the Fund intends to satisfy the diversification standards prescribed by Section 817(h) for segregated accounts. By meeting these and other requirements, the Participating Insurance Companies, rather than VA contract holders or VLI policyholders, should be subject to tax on distributions received with respect to Fund shares. The tax treatment on distributions made to a Participating Insurance Company will depend on the Participating Insurance Company's tax status.

If, however, the Fund were not to satisfy these conditions, a segregated asset account of a Participating Insurance Company owning shares of the Fund would be required to treat such shares as a single investment asset (and, accordingly, would not be able to treat its proportionate interest in the Fund's assets as being directly owned) for purposes of determining whether the segregated asset account is "adequately diversified" within the meaning of Section 817(h) of the Code. This, in turn, would make it more difficult for any such segregated asset account to satisfy the diversification standards of the Code. If a segregated asset account is not adequately diversified, it may not serve as the basis for VA contracts or VLI policies.

Ordinarily, gains and losses realized from portfolio transactions will be treated as capital gain or loss. In addition, all or a portion of the gain realized from engaging in “conversion transactions” (generally including certain transactions designed to convert ordinary income into capital gain) may be treated as ordinary income.

Gain or loss, if any, realized by the Fund from certain financial futures transactions (“Section 1256 contracts”) will be treated as 60% long-term capital gain or loss and 40% short-term capital gain or loss. Gain or loss will arise upon the exercise or lapse of Section 1256 contracts as well as from closing transactions. In addition, any Section 1256 contracts remaining unexercised at the end of the Fund’s taxable year will be treated as sold for their then fair market value, resulting in additional gain or loss to the Fund characterized in the manner described above.

Offsetting positions held by the Fund involving futures may constitute “straddles.” Straddles are defined to include “offsetting positions” in actively traded personal property. To the extent the straddle rules apply to positions established by a Fund, losses realized by the Fund may be deferred to the extent of unrealized gain in the offsetting position. In addition, short-term capital loss on straddle positions may be recharacterized as long-term capital loss, and long-term capital gains on straddle positions may be treated as short-term capital gains or ordinary income. Certain of the straddle positions held by the Fund may constitute “mixed straddles.” The Fund may make one or more elections with respect to the treatment of “mixed straddles,” resulting in different tax consequences. In certain circumstances, the provisions governing the tax treatment of straddles override or modify certain of the provisions discussed above.

The foregoing is only a general summary of some of the important Federal income tax considerations generally affecting the Fund and its shareholders. No attempt is made to present a complete explanation of the Federal tax treatment of the Fund’s activities or to discuss state and local tax matters affecting the Fund. Policyholders are urged to consult their own tax advisers for more detailed information concerning tax implications of investments in the Fund. For more information concerning the Federal income tax consequences, Policyholders should refer to the prospectus for their Policies.

PORTFOLIO TRANSACTIONS

General. The Manager assumes general supervision over the placement of securities purchase and sale orders on behalf of the funds it manages. Funds managed by dual employees of the Manager and an affiliated entity, and funds that employ a sub-investment adviser, execute portfolio transactions through the trading desk of the affiliated entity or sub-investment adviser, as applicable (the “Trading Desk”). Those funds use the research facilities, and are subject to the internal policies and procedures, of applicable affiliated entity or sub-investment adviser.

The Trading Desk generally has the authority to select brokers (for equity securities) or dealers (for fixed income securities) and the commission rates or spreads to be paid. Allocation of brokerage transactions is made in the best judgment of the Trading Desk and in a manner deemed fair and reasonable. In choosing brokers or dealers, the Trading Desk evaluates the ability of the broker or dealer to execute the transaction at the best combination of price and

quality of execution.

In general, brokers or dealers involved in the execution of portfolio transactions on behalf of a fund are selected on the basis of their professional capability and the value and quality of their services. The Trading Desk attempts to obtain best execution for the funds by choosing brokers or dealers to execute transactions based on a variety of factors, which may include, but are not limited to, the following: (i) price; (ii) liquidity; (iii) the nature and character of the relevant market for the security to be purchased or sold; (iv) the quality and efficiency of the broker's or dealer's execution; (v) the broker's or dealer's willingness to commit capital; (vi) the reliability of the broker or dealer in trade settlement and clearance; (vii) the level of counterparty risk (*i.e.*, the broker's or dealer's financial condition); (viii) the commission rate or the spread; (ix) the value of research provided; (x) the availability of electronic trade entry and reporting links; and (xi) the size and type of order (*e.g.*, foreign or domestic security, large block, illiquid security). In selecting brokers or dealers no factor is necessarily determinative; however, at various times and for various reasons, certain factors will be more important than others in determining which broker or dealer to use. Seeking to obtain best execution for all trades takes precedence over all other considerations.

Investment decisions for one fund or account are made independently from those for other funds or accounts managed by the portfolio managers. Under the Trading Desk's procedures, portfolio managers and their corresponding Trading Desks may seek to aggregate (or "bunch") orders that are placed or received concurrently for more than one fund or account. In some cases, this policy may adversely affect the price paid or received by a fund or an account, or the size of the position obtained or liquidated. As noted above, certain brokers or dealers may be selected because of their ability to handle special executions such as those involving large block trades or broad distributions, provided that the primary consideration of best execution is met. Generally, when trades are aggregated, each fund or account within the block will receive the same price and commission. However, random allocations of aggregate transactions may be made to minimize custodial transaction costs. In addition, at the close of the trading day, when reasonable and practicable, the completed securities of partially filled orders will generally be allocated to each participating fund and account in the proportion that each order bears to the total of all orders (subject to rounding to "round lot" amounts and other relevant factors).

Portfolio turnover may vary from year to year as well as within a year. In periods in which extraordinary market conditions prevail, the portfolio managers will not be deterred from changing a Fund's investment strategy as rapidly as needed, in which case higher turnover rates can be anticipated which would result in greater brokerage expenses. The overall reasonableness of brokerage commissions paid is evaluated by the Trading Desk based upon its knowledge of available information as to the general level of commissions paid by other institutional investors for comparable services. Higher portfolio turnover rates usually generate additional brokerage commissions and transaction costs, and any short-term gains realized from these transactions are taxable to shareholders as ordinary income.

To the extent that a fund invests in foreign securities, certain of such fund's transactions in those securities may not benefit from the negotiated commission rates available to funds for transactions in securities of domestic issuers. For funds that permit foreign exchange

transactions, such transactions are made with banks or institutions in the interbank market at prices reflecting a mark-up or mark-down and/or commission.

The portfolio managers may deem it appropriate for one fund or account they manage to sell a security while another fund or account they manage is purchasing the same security. Under such circumstances, the portfolio managers may arrange to have the purchase and sale transactions effected directly between the funds and/or accounts (“cross transactions”). Cross transactions will be effected in accordance with procedures adopted pursuant to Rule 17a-7 under the 1940 Act.

Funds and accounts managed by the Manager, an affiliated entity or a sub-investment adviser may own significant positions in portfolio companies which, depending on market conditions, may affect adversely the ability to dispose of some or all of such positions.

For its portfolio securities transactions for the fiscal years ended December 31, 2007, 2006 and 2005, the Fund paid total brokerage commissions of \$18,948, \$23,536 and \$171,870, respectively, none of which was paid to the Distributor. For the fiscal years ended December 31, 2007, 2006 and 2005, the Fund paid spreads and concessions on principal transactions of \$0, \$135,072 and \$19,726, respectively, none of which was paid to the Distributor. Brokerage commissions increased in 2005 due to an increase in trading activity.

There were no transactions conducted on an agency basis through a broker, for among other things, research services for the fiscal year ended December 31, 2007.

Regular Broker-Dealers. The Fund may acquire securities issued by one or more of its “regular brokers or dealers,” as defined in Rule 10b-1 under the 1940 Act. Rule 10b-1 provides that a “regular broker or dealer” is one of the ten brokers or dealers that, during the Fund’s most recent fiscal year (i) received the greatest dollar amount of brokerage commissions from participating, either directly or indirectly, in the Fund’s portfolio transactions, (ii) engaged as principal in the largest dollar amount of the Fund’s portfolio transactions or (iii) sold the largest dollar amount of the Fund’s securities. The following is a list of the Fund’s regular brokers or dealers whose securities the Fund acquired, and the aggregate value of such securities, as of December 31, 2007: Banc of America Securities, LLC - \$45,764,000; Wachovia Securities, Inc. - 18,776,000; Citigroup Global Markets, Inc. - \$36,732,000; Goldman, Sachs & Co. - \$21,365,000; J.P. Morgan Chase Bank - \$36,645,000; Merrill Lynch, Pierce, Fenner & Smith, Inc. - \$11,484,000; and Morgan Stanley - \$14,086,000.

Disclosure of Portfolio Holdings. It is the policy of Dreyfus to protect the confidentiality of funds portfolio holdings and prevent the selective disclosure of non-public information about such holdings. Each fund, or its duly authorized service providers, may publicly disclose its holdings in accordance with regulatory requirements, such as periodic portfolio disclosure in filings with the Securities and Exchange Commission. Each non-money market fund, or its duly authorized service providers, may publicly disclose its complete schedule of portfolio holdings, at month-end, with a one-month lag, on the Dreyfus website at www.dreyfus.com. In addition fifteen days following the end of each calendar quarter, each non-money market fund, or its duly authorized service providers may publicly disclose on the website its complete schedule of

portfolio holdings as of the end of such quarter. Each money market fund, or its duly authorized service providers, may publicly disclose on the website its complete schedule of holdings twice a month, on the 15th day of the month and the last business day of the month, with a 15-day lag. Portfolio holdings will remain available on the website until the date on which the fund files a Form N-CSR or Form N-Q for the period that includes the date as of which the website information is current.

If a fund's portfolio holdings are released pursuant to an ongoing arrangement with any party, such fund must have a legitimate business purpose for doing so, and neither the fund, nor Dreyfus or its affiliates, may receive any compensation in connection with an arrangement to make available information about the fund's portfolio holdings. Funds may distribute portfolio holdings to mutual fund evaluation services such as Standard & Poor's, Morningstar or Lipper Analytical Services; due diligence departments of broker-dealers and wirehouses that regularly analyze the portfolio holdings of mutual funds before their public disclosure; and broker-dealers that may be used by the fund, for the purpose of efficient trading and receipt of relevant research, provided that: (a) the recipient does not distribute the portfolio holdings to persons who are likely to use the information for purposes of purchasing or selling fund shares or fund portfolio holdings before the portfolio holdings become public information; and (b) the recipient signs a written confidentiality agreement.

Funds may also disclose any and all portfolio information to their service providers and others who generally need access to such information in the performance of their contractual duties and responsibilities and are subject to duties of confidentiality, including a duty not to trade on non-public information, imposed by law and/or contract. These service providers include the fund's custodian, auditors, investment adviser, administrator, and each of their respective affiliates and advisers.

Disclosure of portfolio holdings may be authorized only by the fund's Chief Compliance Officer, and any exceptions to this policy are reported quarterly to the fund's Board.

SUMMARY OF THE PROXY VOTING POLICY, PROCEDURES AND GUIDELINES OF THE DREYFUS FAMILY OF FUNDS

The Board of each fund in the Dreyfus Family of Funds has delegated to the Manager the authority to vote proxies of companies held in the fund's portfolio. The Manager, through its participation on the BNY Mellon Proxy Policy Committee (the "PPC"), applies BNY Mellon's Proxy Voting Policy, related procedures, and voting guidelines when voting proxies on behalf of the funds.

The Manager recognizes that an investment adviser is a fiduciary that owes its clients, including funds it manages, a duty of utmost good faith and full and fair disclosure of all material facts. An investment adviser's duty of loyalty requires an adviser to vote proxies in a manner consistent with the best interest of its clients and precludes the adviser from subrogating the clients' interests to its own. In addition, an investment adviser voting proxies on behalf of a fund must do so in a manner consistent with the best interests of the fund and its shareholders.

The Manager seeks to avoid material conflicts of interest by participating in the PPC, which applies detailed, pre-determined written proxy voting guidelines (the “Voting Guidelines”) in an objective and consistent manner across client accounts, based on internal and external research and recommendations provided by a third party vendor, and without consideration of any client relationship factors. Further, the Manager and its affiliates engage a third party as an independent fiduciary to vote all proxies of funds managed by BNY Mellon or its affiliates (including the Dreyfus Family of Funds), and may engage an independent fiduciary to vote proxies of other issuers at its discretion.

All proxies received by the funds are reviewed, categorized, analyzed and voted in accordance with the Voting Guidelines. The guidelines are reviewed periodically and updated as necessary to reflect new issues and any changes in BNY Mellon’s or the Manager’s policies on specific issues. Items that can be categorized under the Voting Guidelines are voted in accordance with any applicable guidelines or referred to the PPC, if the applicable guidelines so require. Proposals that cannot be categorized under the Voting Guidelines are referred to the PPC for discussion and vote. Additionally, the PPC reviews proposals where it has identified a particular company, industry or issue for special scrutiny. With regard to voting proxies of foreign companies, the Manager weighs the cost of voting and potential inability to sell the securities (which may occur during the voting process) against the benefit of voting the proxies to determine whether or not to vote. With respect to securities lending transactions, the Manager seeks to balance the economic benefits of continuing to participate in an open securities lending transaction against the inability to vote proxies.

When evaluating proposals, the PPC recognizes that the management of a publicly-held company may need protection from the market’s frequent focus on short-term considerations, so as to be able to concentrate on such long-term goals as productivity and development of competitive products and services. In addition, the PPC generally supports proposals designed to provide management with short-term insulation from outside influences so as to enable them to bargain effectively with potential suitors to the extent such proposals are discrete and not bundled with other proposals. The PPC believes that a shareholder’s role in the governance of a publicly-held company is generally limited to monitoring the performance of the company and its management and voting on matters which properly come to a shareholder vote. However, the PPC generally opposes proposals designed to insulate an issuer’s management unnecessarily from the wishes of a majority of shareholders. Accordingly, the PPC generally votes in accordance with management on issues that the PPC believes neither unduly limit the rights and privileges of shareholders nor adversely affect the value of the investment.

On questions of social responsibility where economic performance does not appear to be an issue, the PPC attempts to ensure that management reasonably responds to the social issues. Responsiveness will be measured by management’s efforts to address the particular social issue including, where appropriate, assessment of the implications of the proposal to the ongoing operations of the company. The PPC will pay particular attention to repeat issues where management has failed in its commitment in the intervening period to take actions on issues.

In evaluating proposals regarding incentive plans and restricted stock plans, the PPC typically employs a shareholder value transfer model. This model seeks to assess the amount of

shareholder equity flowing out of the company to executives as options are exercised. After determining the cost of the plan, the PPC evaluates whether the cost is reasonable based on a number of factors, including industry classification and historical performance information. The PPC generally votes against proposals that permit the repricing or replacement of stock options without shareholder approval or that are silent on repricing and the company has a history of repricing stock options in a manner that the PPC believes is detrimental to shareholders.

Information regarding how the Manager voted proxies for the Fund is available on the Dreyfus Family of Funds' website at <http://www.dreyfus.com> and on the SEC's website at <http://www.sec.gov> on the Funds' Form N-PX filed with the SEC.

INFORMATION ABOUT THE FUND

The Fund's shares are classified into two classes. Each share has one vote and shareholders will vote in the aggregate and not by class, except as otherwise required by law or with respect to any matter which affects only one class. Each Fund share, when issued and paid for in accordance with the terms of the offering, is fully paid and non-assessable. Fund shares have no preemptive, subscription or conversion rights and are freely transferable.

Unless otherwise required by the 1940 Act, ordinarily it will not be necessary for the Fund to hold annual meetings of shareholders. As a result, Fund shareholders may not consider each year the election of Board members or the appointment of auditors. However, the holders of at least 10% of the shares outstanding and entitled to vote may require the Fund to hold a special meeting of shareholders for purposes of removing a Board member from office. Fund shareholders may remove a Board member by the affirmative vote of a majority of the Fund's outstanding voting shares. In addition, the Fund's Board will call a meeting of shareholders for the purpose of electing Board members if, at any time, less than a majority of the Board members then holding office have been elected by shareholders.

The Fund sends annual and semi-annual financial statements to all its shareholders.

The Fund is intended to be a long-term investment vehicle and is not designed to provide investors with a means of speculating on short-term market movements. A pattern of frequent purchases and exchanges can be disruptive to efficient portfolio management and, consequently, can be detrimental to the Fund's performance and its shareholders. If Fund management determines that an investor is following an abusive investment strategy, it may reject any purchase request, or terminate the investor's exchange privilege, with or without prior notice. Such investors also may be barred from purchasing share of other funds in the Dreyfus Family of Funds. Accounts under common ownership or control may be considered as one account for purposes of determining a pattern of excessive or abusive trading. In addition, the Fund may refuse or restrict purchase or exchange requests for Fund shares by any Participating Insurance Company, person or group if, in the judgment of the Fund's management, the Fund would be unable to invest the money effectively in accordance with its investment objective and policies or could otherwise be adversely affected or if the Fund receives or anticipates receiving simultaneous orders that may significantly affect the Fund. If an exchange request is refused, the Fund will take no other action with respect to the Fund shares until it receives further

instructions from the investor. While the Fund will take reasonable steps to prevent excessive short term trading deemed to be harmful to the Fund, it may not be able to identify excessive trading conducted through certain financial intermediaries or omnibus accounts.

The Fund is not sponsored, endorsed, sold or promoted by S&P. S&P makes no representation or warranty, express or implied, to the owners of the Fund or any member of the public regarding the advisability of investing in securities generally or in the Fund particularly or the ability of the S&P 500 Index to track general stock market performance. S&P's only relationship to the Fund is the licensing of certain trademarks and trade names of S&P and of the S&P 500 Index which is determined, composed and calculated by S&P without regard to the Fund. S&P has no obligation to take the needs of the Fund or the owners of the Fund into consideration in determining, composing or calculating the S&P 500 Index. S&P is not responsible for and has not participated in the calculation of the Fund's net asset value, nor is S&P a distributor of the Fund. S&P has no obligation or liability in connection with the administration, marketing or trading of the Fund.

S&P DOES NOT GUARANTEE THE ACCURACY AND/OR THE COMPLETENESS OF THE S&P 500 INDEX OR ANY DATA INCLUDED THEREIN. S&P MAKES NO WARRANTY, EXPRESS OR IMPLIED, AS TO RESULTS TO BE OBTAINED BY THE FUND, OWNERS OF THE FUND, OR ANY OTHER PERSON OR ENTITY FROM THE USE OF THE S&P 500 INDEX OR ANY DATA INCLUDED THEREIN. S&P MAKES NO EXPRESS OR IMPLIED WARRANTIES, AND EXPRESSLY DISCLAIMS ALL WARRANTIES OF MERCHANTABILITY OR FITNESS FOR A PARTICULAR PURPOSE OR USE WITH RESPECT TO THE S&P 500 INDEX OR ANY DATA INCLUDED THEREIN. WITHOUT LIMITING ANY OF THE FOREGOING, IN NO EVENT SHALL S&P HAVE ANY LIABILITY FOR ANY SPECIAL, PUNITIVE, INDIRECT, OR CONSEQUENTIAL DAMAGES (INCLUDING LOST PROFITS), EVEN IF NOTIFIED OF THE POSSIBILITY OF SUCH DAMAGES.

The following separate accounts are known by the Fund to own of record 5% or more of the Fund's voting securities outstanding on March 30, 2008. A shareholder who beneficially owns, directly or indirectly, more than 25% of the Fund's voting securities may be deemed a "control person" (as defined in the 1940 Act) of the Fund.

Initial shares

Nationwide Corporation 65.201%
P.O. Box 182029
Columbus, OH 43218-2029

Service Shares

Allianz Life Insurance Company of North America..... 56.2497%
5701 Golden Hills Drive
Minneapolis, MN 55416-1297

Nationwide Corporation 25.839%
P.O. Box 182029
Columbus, OH 43218-2029

Symetra Life Insurance Co. 7.5843%
P.O. Box 3882
Seattle, WA 98124-3882

Transamerica Occidental Life 6.5646%
Insurance Company
4333 Edgewood Rd. NE
Cedar Rapids, IA 52499-0001

COUNSEL AND INDEPENDENT REGISTERED PUBLIC ACCOUNTING FIRM

Stroock & Stroock & Lavan LLP, 180 Maiden Lane, New York, New York 10038-4982, as counsel for the Fund, has rendered its opinion as to certain legal matters regarding the due authorization and valid issuance of the shares being sold pursuant to the Funds' Prospectus.

Ernst & Young LLP, 5 Times Square, New York, New York 10036, an independent registered public accounting firm, have been selected as the independent registered public accounting firm for the Fund.

APPENDIX

Description of S&P A-1 Commercial Paper Rating:

The rating A is the highest rating and is assigned by S&P to issues that are regarded as having the greatest capacity for timely payment. Issues in this category are delineated with the number 1, 2 or 3 to indicate the relative degree of safety. Paper rated A-1 indicates that the degree of safety regarding timely payment is either overwhelming or very strong. Those issues determined to possess overwhelming safety characteristics are denoted with a plus (+) sign designation.

Description of Moody's Prime-1 Commercial Paper Rating:

The rating Prime-1 (P-1) is the highest commercial paper rating assigned by Moody's. Issuers of P-1 paper must have a superior capacity for repayment of short-term promissory obligations, and ordinarily will be evidenced by leading market positions in well established industries, high rates of return on funds employed, conservative capitalization structures with moderate reliance on debt and ample asset protection, broad margins in earnings coverage of fixed financial charges and high internal cash generation, and well established access to a range of financial markets and assured sources of alternate liquidity.