

OMB APPROVAL
OMB Number: 3235-0060
Expires: April 30, 2009
Estimated average burden hours per response: 38

**UNITED STATES
SECURITIES AND EXCHANGE COMMISSION
WASHINGTON, D.C. 20549**

FORM 8-K

**Current Report
Pursuant to Section 13 or 15(d) of the
Securities Exchange Act of 1934**

Date of Report (Date of Earliest Event Reported): February 23, 2009

THUNDER MOUNTAIN GOLD
(Exact Name of Registrant as Specified in its Charter)

Idaho (State or other jurisdiction of incorporation)	001-08429 (Commission File Number)	91-1031075 (IRS Employer Identification No.)
5248 W. Chinden, Boise, Idaho (Address of principal executive offices)		83714 (Zip Code)

Registrant's telephone number, including area code: **208-658-1037**

(Former Name or Former Address if Changed Since Last Report)

Check the appropriate box below if the Form 8K filing is intended to simultaneously satisfy the filing obligation of the registrant under any of the following provisions:

- Written communications pursuant to Rule 425 under the Securities Act (17CFR230.425)
- Soliciting material pursuant to Rule 14a-12 under the Exchange Act (17CFR 240.14a-12)
- Pre-commencement communications pursuant to Rule 14d-2(b) under the Exchange Act (17 CFR 240.14d-2(b))
- Pre-commencement communication pursuant to Rule 13e-4(c) under the Exchange Act (17 CFR 240.13e-4(c))

SEC 873 (3-05) Potential persons who are to respond to the collection of information contained in this form are not required to respond unless the form displays a currently valid OMB control number.

Item 7.01 Other Events.

Attached hereto as Exhibit 99.1 is a presentation anticipated to be delivered by officers of Thunder Mountain Gold, Inc. to individuals on February 23, 2009 at offices located in Boise Idaho, and to individuals at the Four Seasons Hotel in Santa Barbara, California on March 3, 2009.

In accordance with General Instruction B.2 of Form 8-K, the information in this Item 7.01 of this report shall not be deemed "filed" for the purpose of Section 18 of the Securities Exchange Act of 1934, nor shall it be deemed incorporated by reference in any filing.

Item 9.01 Exhibits.

Exhibits

99.1 Presentation

SIGNATURES

FORM 8-K

Pursuant to the requirements of the Securities Exchange Act of 1934, the registrant has duly caused this report to be signed on its behalf by the undersigned hereunto duly authorized.

THUNDER MOUNTAIN GOLD, INC.
(Registrant)

By: /s/ E. JAMES COLLORD


E. James Collord
President, Director and Chief Executive Officer

Date: February 23, 2009

Thunder Mountain Gold, Inc. 2009 Exploration & Project Overview Spring 2009



Thunder Mountain Gold, Inc.
5848 Chinden Blvd.
Boise, Idaho 83714



Forward-Looking Statements: Statements made which are not historical facts, such as anticipated production, exploration results, costs or sales performance are "*forward-looking statements*", and involve a number of risks and uncertainties that could cause actual results to differ materially from those projected, anticipated, expected or implied. These risks and uncertainties include, but are not limited to, metals prices volatility, volatility of metals production, exploration project uncertainties, industrial minerals market conditions and project development risks. Refer to the Company's Periodic Filings for a more detailed discussion of factors that may impact expected future results. Thunder Mountain Gold undertakes no obligation to publicly update or revise any forward-looking statements.

Cautionary Note to Investors - The United States Securities and Exchange Commission ("SEC") permits mining companies, in their filings with the SEC, to disclose only those mineral deposits that a company can economically and legally extract or produce.

Presentation Objectives

Exploration Project Summary

- South Mountain, Idaho
- Clover Mountain, Idaho
- Trout Creek, Nevada
- Tonopah, Nevada
- Portland, Arizona
- Gold Hill, Arizona



INCORPORATED:

Idaho, 1935
Nevada, 2008

TRADING:

NASDAQ – OTCBB

COMMON SHARES AUTHORIZED:

200,000,000 Shares

PREFERRED SHARES AUTHORIZED:

5,000,000

COMMON SHARES OUTSTANDING:

17.5M shares of Common
Stock/Warrants - 07/31/08


“FREE TRADING” SHARES:

6M (approximate)

CONTROL SHARE POSITION:

30 individuals own approximately
8.9M shares or 51% (fully diluted)





COMMON SHAREHOLDERS: 2,038 (06/30/08)

12 Mo. TRADING RANGE: \$0.20-\$0.45 US

ASSETS: Properties and approx.
\$200K cash (1/1/09)

ADDITIONAL ASSET: \$7.5 million Charitable Contribution Deduction
made in 2005. Carryover for 5 years.

LIABILITIES/DEBT: None

FINANCIALS: Audited and SOX Compliant

OWNED SUBSIDIARIES: Thunder Mountain Resources
South Mountain Mines, Inc.



2008 Exploration and Development

- ☐ Technical Report Completed by Kleinfelder
- ☐ Drilled 2,085 Feet of NQ and BQ Core
- ☐ Identified Ore Mineralization 300' Below Sonneman
- ☐ Rehabilitated Sonneman Portal and Workings
- ☐ Leased 490 Private Acres of Adjoining Ground (816 Total Private Acres)
- ☐ Staked 21 Unpatented Mining Claims (420 Acres)
- ☐ Completed Survey of the Patented Claims, Laxey Underground Workings, and Leased Ground
- ☐ Identified Intrusive Breccia Au Anomaly (1.7 ppm Au Rock Chips, 0.31 ppm soils)
- ☐ Identified Au Soil Anomalies at Clover Mountain



South Mountain Project

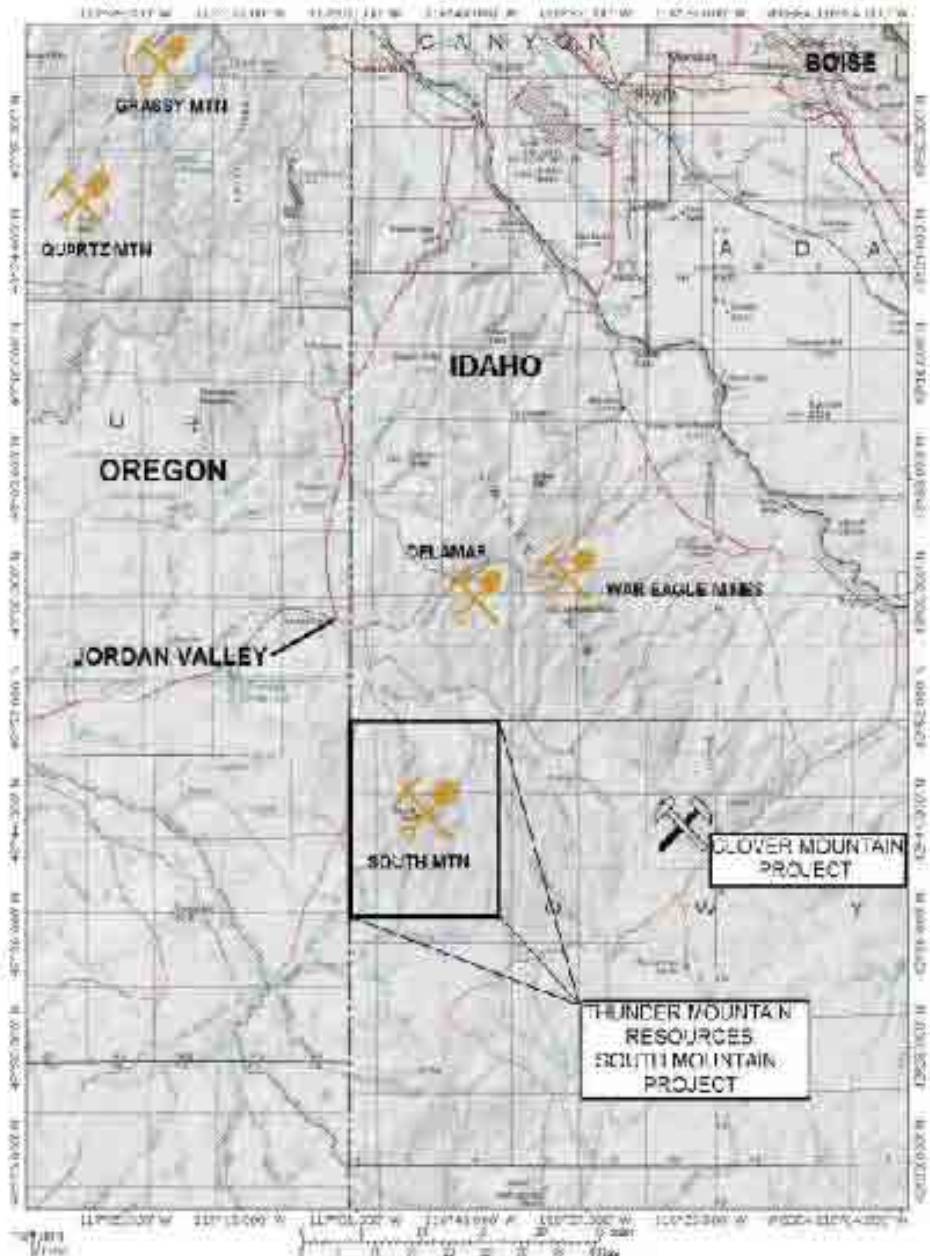
Located in Sections 33,34; T.7S.;
R.5W. and Sections 9,10,11,14,15;
T.8S.; R.5W. Boise Meridian,
Owyhee County, Idaho

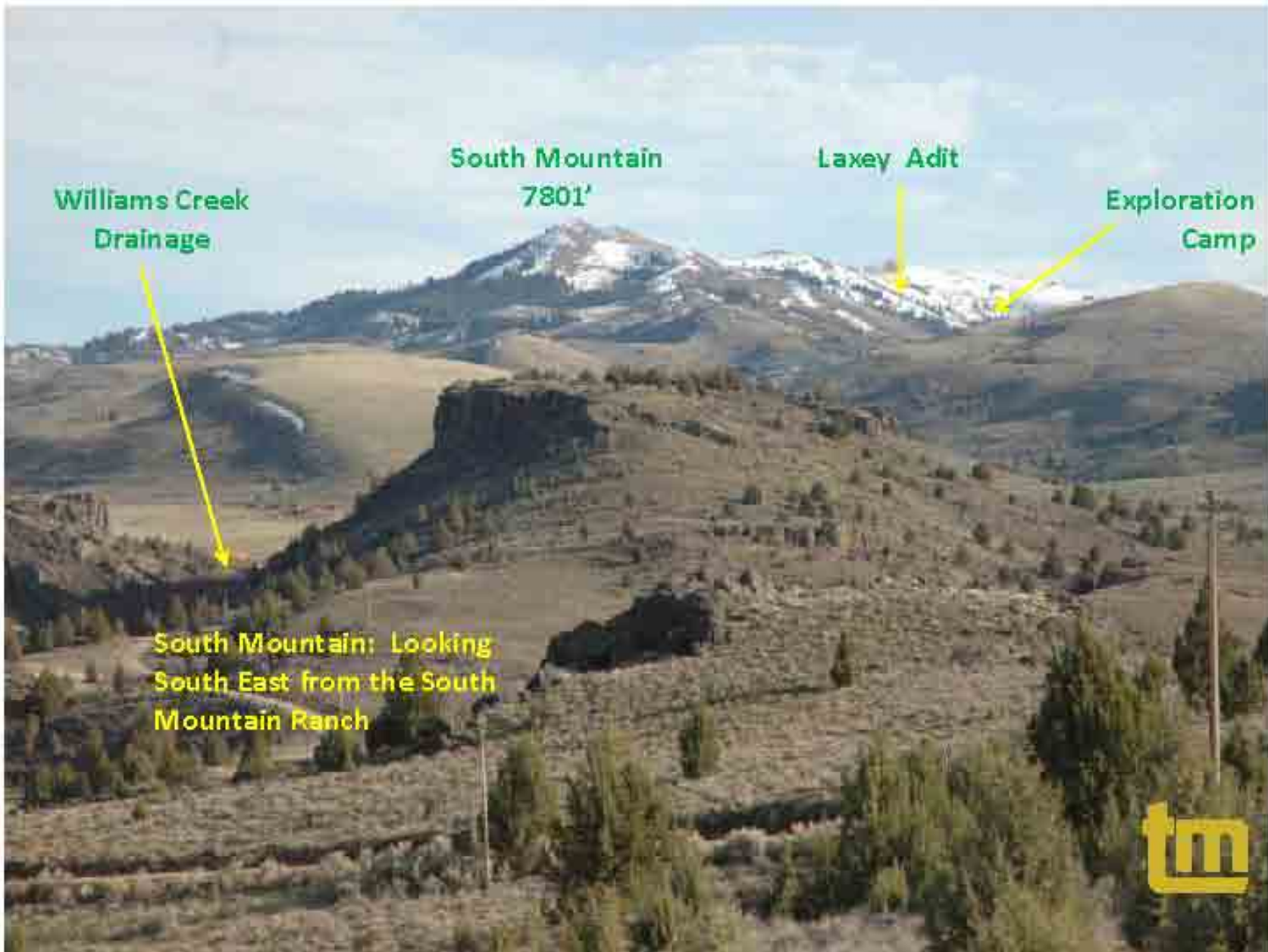
Latitude: 42° 44' 40" North
Longitude: 116° 55' 16" West

Approximately 70 air miles SW of
Boise, Idaho and approximately 24
miles SE of Jordan Valley, Oregon

17 patented mining claims (326
acres) 21 unpatented mining claims
(420 acres)

Two exploration leases totaling 490
acres of adjoining private ground





Williams Creek
Drainage

South Mountain
7801'

Laxey Adit

Exploration
Camp

South Mountain: Looking
South East from the South
Mountain Ranch



South Mountain Camp and Workings

South

North

Bay State Shaft

Sonneman Adit

Exploration Camp

Williams Creek

Laxey Adit



South Mountain District History

- ❑ 1868: Gold and Silver Quartz Veins Discovered
- ❑ 1874: South Mountain Consolidated Mining and Smelting
- ❑ 1875: Bullion City had 3,000 Residents
- ❑ 1930's: Development of the Laxey and Sonneman Levels
- ❑ 1940's: Anaconda Direct Ships 53,635 Tons to Utah Smelter
- ❑ 1950's: Defense Minerals Exploration Administration (DMEA)
- ❑ 1969: Property Consolidated & Purchased by W.A. Bowes, Inc
- ❑ 1977: South Mountain Mining, Inc. Sonneman & Laxey
- ❑ 2007: THMG/THMR Purchases 326 Acres (17 Patented Claims)
- ❑ 2008: THMG/THMR Lease 490 Private Acres. Au/Ag Anomalies



Crude Ore Shipments: 1941-1953

Total Tons: 53,653

Metal	Grade	Total Metal	Unit Value Current Price (January 2009)	Total Value
Gold	0.058 opt	3,120 oz	\$900.00	\$ 2,808,000
Silver	10.6 opt	566,440 oz	\$12.50	\$ 7,080,500
Copper	1.4%	1,485,200 lbs	\$1.35	\$ 2,005,020
Lead	2.4%	2,562,300 lbs	\$.50	\$ 1,281,150
Zinc	14.5%	15,593,100 lbs	\$.50	\$7,796,550
Total				\$20,971,220
Value per Ton				\$391

Grades and Amounts Confirmed by Smelter Reports

South Mountain Mines: 1985 Ore Resource

Estimate: **470,000 Tons**

Metal	Grade	Total Metal	Unit Value Current Price (January 2009)	Total Gross Value
Gold	0.050 opt	23,500 oz	\$900.00	\$ 21,150,000
Silver	7.53 opt	3,539,100 oz	\$12.50	\$ 44,238,750
Copper	0.94%	8,836,000 lbs	\$1.35	\$ 11,928,600
Lead	1.4%	13,160,000 lbs	\$.50	\$ 6,580,000
Zinc	9.77%	91,638,000 lbs	\$.50	\$45,819,000
Total				\$129,716,350
Value per Ton				\$276

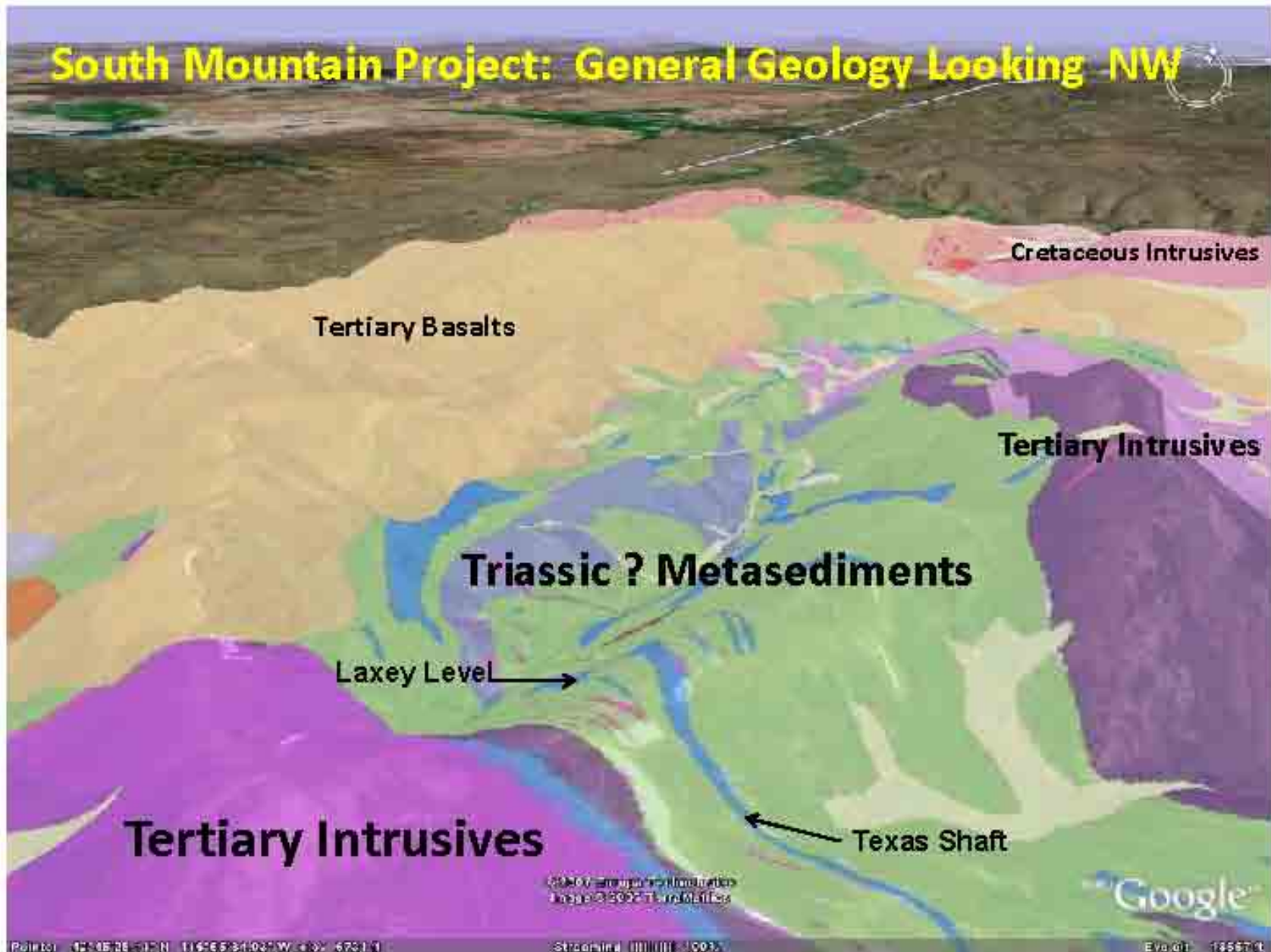
Grades and Amounts Confirmed by Kleinfelder

Thunder Mountain Gold Inc.
South Mountain Mine Economics
Internal Scoping Study

- **Resource Estimate:** 470,000 Tons (Base Case)
- **Inputs:** \$21M CapX; 5 Yr. Mine Life; 5% Disc. Rate
- **Net Present Value:** \$ 40M
- **Net Present Value (Gross Rev.):** \$ 69M
- **Current Share Price:** \$0.25
- **Shares Outstanding:** 17.5M fully diluted
- **Comparable Market Valuation:** 2X NPV

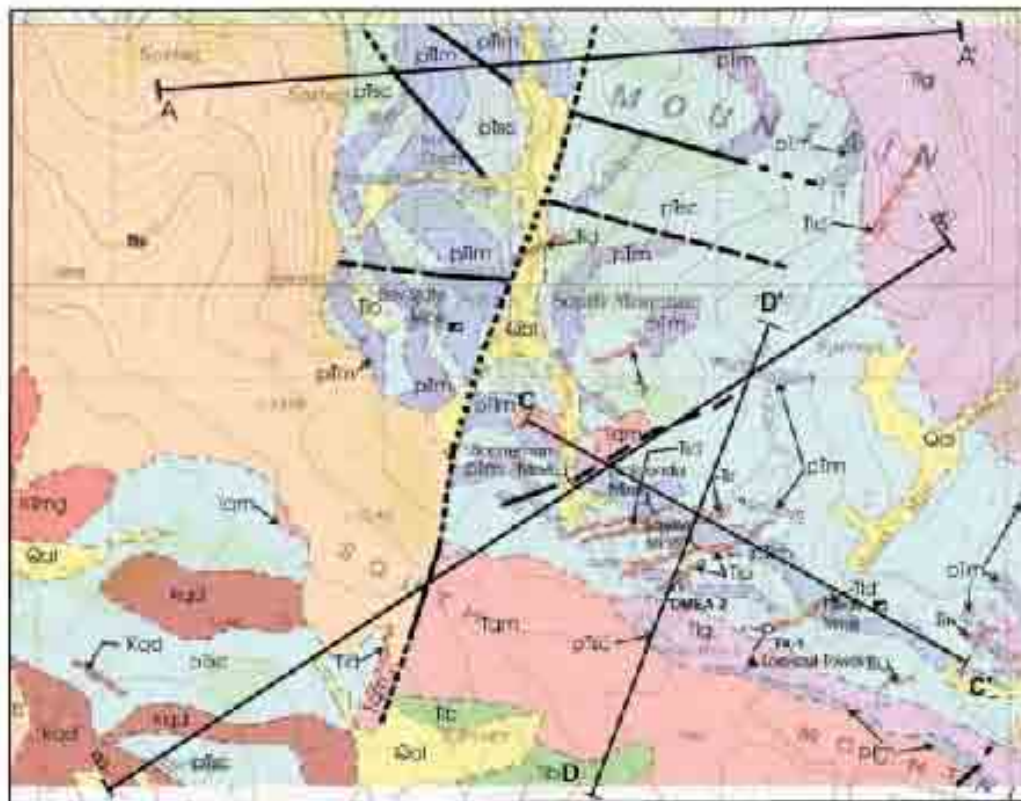
* Economics conducted internally, and through the help of outside P.E. and consultant

South Mountain Project: General Geology Looking NW



South Mountain Geology

- ❑ Isolated Exposure of Metasedimentary (Triassic?) and Intrusive Rocks
- ❑ Mineralization Occurs as Skarn-Hosted, Zinc-Rich Polymetallic Sulfide Bodies and as Silver-Lead Replacement Veins
- ❑ Massive Sulfide: Pyrrhotite+Sphalerite+Chalcopyrite+Galena
- ❑ Ore Zones Trend at 250°; -50° SW: Possible Au/Zn and Ag/Cu Correlation



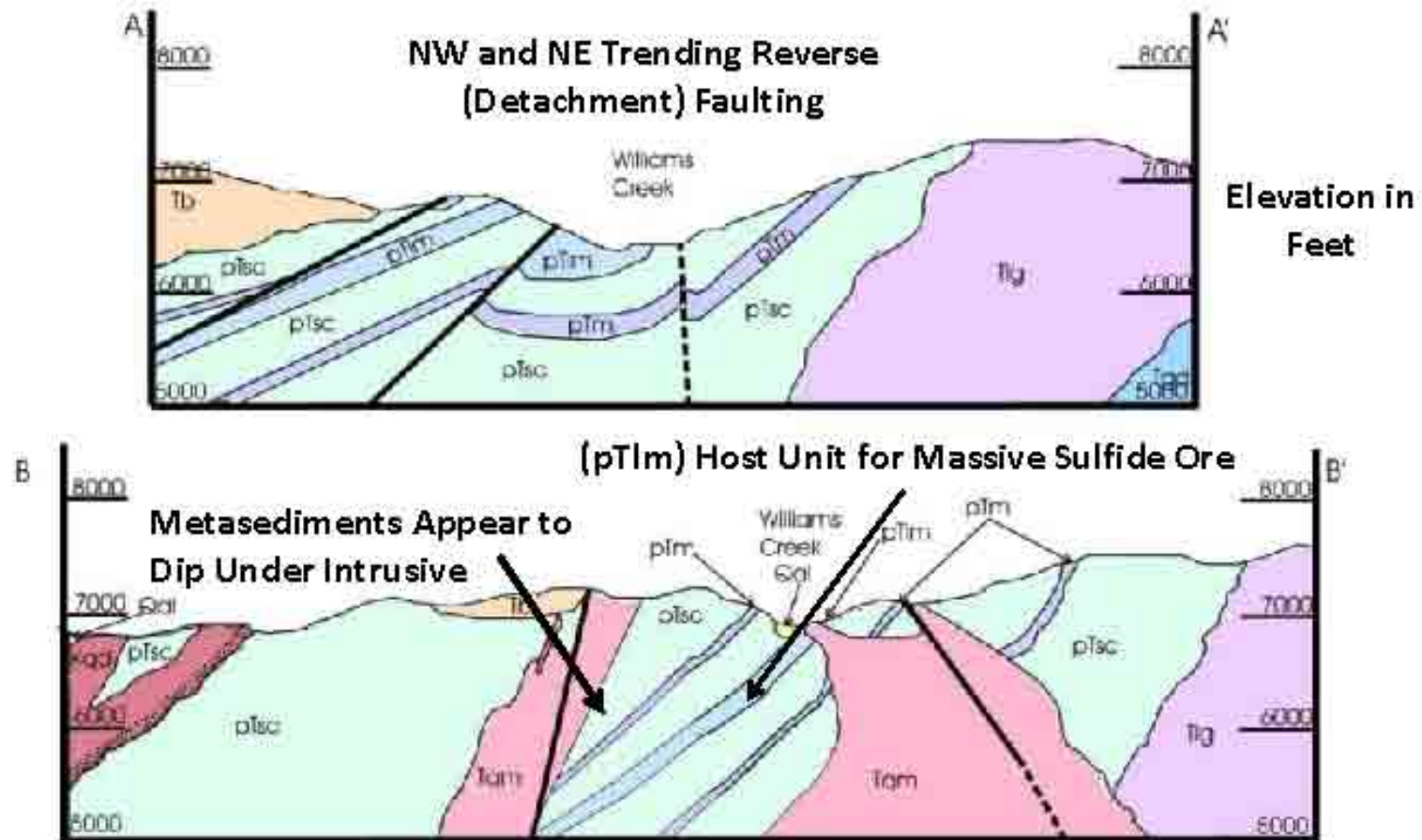
Legend

Qal	Alluvium and Col. vein.	Tc	Intermediate Dikes.
Tb	Basalt	Tls	Intrusive Breccia.
Tam	Quartz monzodiorite	pfac	Undifferentiated Metamorphics.
Tg	Leucocratic Granite	pfm	Undifferentiated Marble.
Td	Lower Tuff.	pfm	Lower Marble.
Tn	Basalt Dikes	rtm	Leucocratic microcline granite.
Tc	Pyrrhotite Dikes.	Kod	Quartz dyptic rocks.

Fault, dashed where approximate, dotted where concealed.
 Lithologic contact, Dashed where inferred.
 Mine Shaft Drill Hole
 Mine Portal
 A-A' and B-B' - represent cross-sectional lines shown in Figure

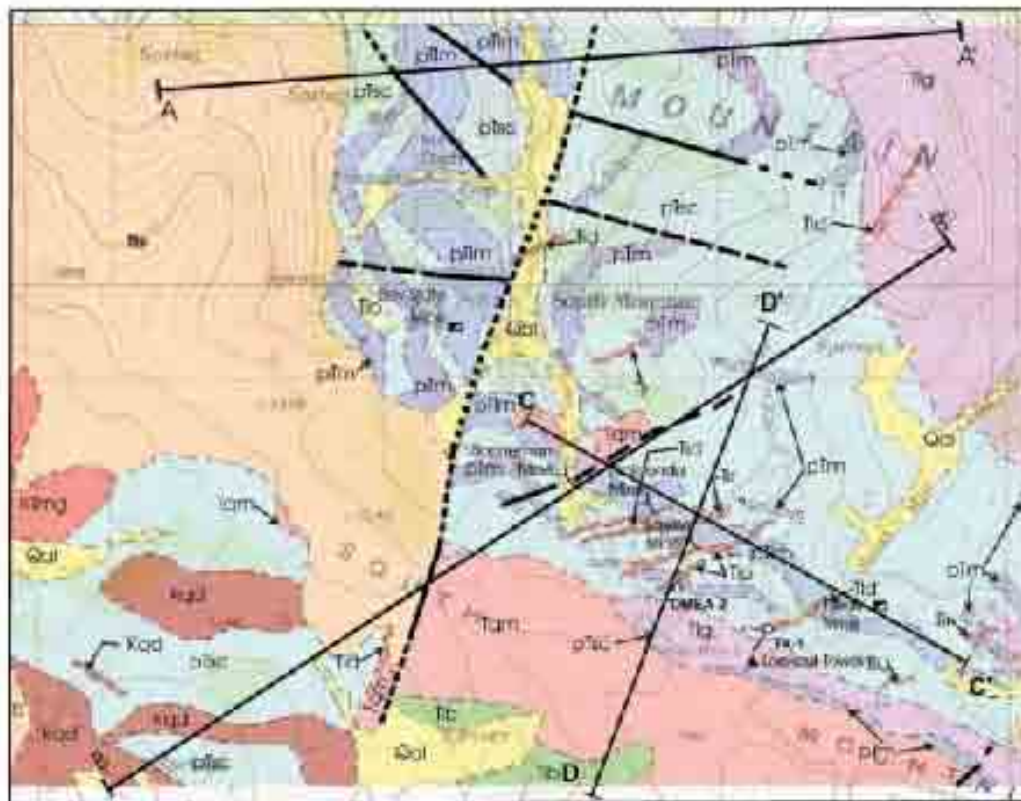
1 Km 0.5 0 0.5 1 Km

South Mountain Sections A-A' and B-B'



South Mountain Geology

- ❑ Isolated Exposure of Metasedimentary (Triassic?) and Intrusive Rocks
- ❑ Mineralization Occurs as Skarn-Hosted, Zinc-Rich Polymetallic Sulfide Bodies and as Silver-Lead Replacement Veins
- ❑ Massive Sulfide: Pyrrhotite+Sphalerite+Chalcopyrite+Galena
- ❑ Ore Zones Trend at 250°; -50° SW: Possible Au/Zn and Ag/Cu Correlation



Legend

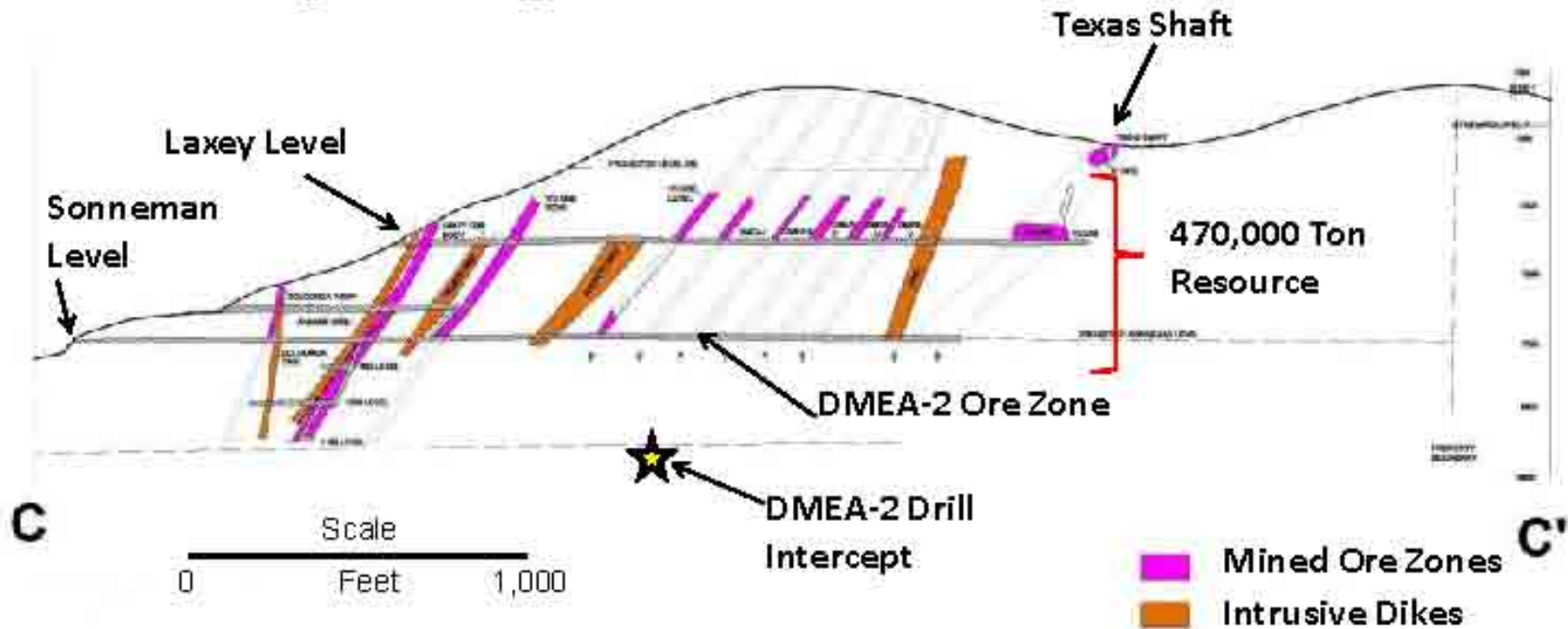
Qal Alluvium and Colluvium.	Tc Intermediate Dikes.
Tb Basalt	Tis Intrusive Breccia.
Tam Quartz monzodiorite	pfac Undifferentiated Metamorphics.
Tg Tertiary Granites	pfm Undifferentiated Marble.
Td Lower Tuff.	pim Lower Marble.
Tn Basalt Dikes	pimn Tertiary meta-sedimentary granites.
Tc Pegmatite Dikes.	Kad Quartz dyke stocks.

Fault, dashed where approximate, dotted where concealed.
 Lithologic contact, Dashed where inferred
 Mine Shaft Drill Hole
 Mine Portal
 A-A' and B-B' - represent cross-sectional lines shown in Figure

1 Km 0.5 0 0.5 1 Km

Long Section C-C' Showing Ore Zones & Underground Workings

Surface Drilling: 4,777 Feet
Underground Drilling: 10,237 Feet



Approximately 8,000 Feet of Underground Workings

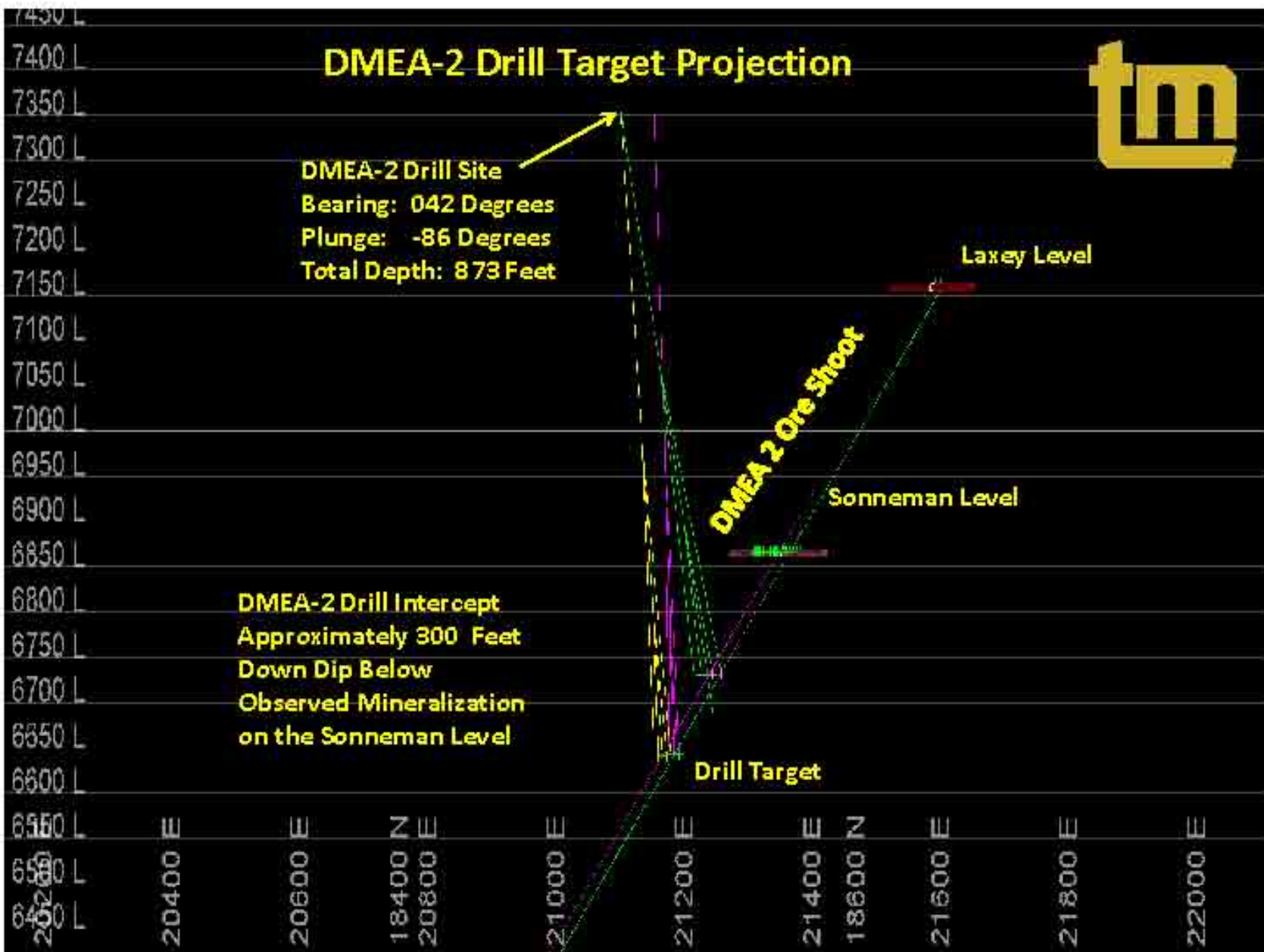
\$383.83	\$515.14						\$314.49			DMEA-2 Ore Zone 5'x5'5' Block Calculation									
\$531.64	\$499.50	\$355.73	\$411.26	\$387.91	\$284.43	\$371.62	\$545.25	\$368.39											
	\$482.09	\$539.31	\$550.97	\$582.05	\$580.93	\$396.30	\$458.08	\$877.26	\$574.76	\$693.66									
		\$430.51	\$361.43	\$442.16	\$493.25	\$475.03	\$476.18	\$482.73	\$539.88	\$636.09	\$648.41								
			\$429.04	\$228.42	\$360.93	\$480.84	\$501.76	\$482.03	\$494.80	\$598.19	\$685.82	\$524.99	\$479.96						
			\$249.00	\$207.61		\$271.66	\$523.38	\$485.76	\$411.36	\$439.75	\$296.36	\$415.66	\$473.22	\$461.23	\$335.25				
							\$320.18	\$325.88	\$383.64	\$344.61	\$376.76	\$374.74	\$636.22	\$379.97	\$242.02	\$284.02			
Sonneman Level Plan View								\$233.40		\$239.24	\$252.89	\$287.74	\$409.05	\$657.95	\$271.65	\$266.27			
						\$279.33	\$214.99				\$237.44	\$419.73	\$738.70	\$229.36	\$274.90				
											\$277.51	\$479.80	\$417.87	\$599.05					
										\$220.85	\$258.72	\$464.99	\$545.01						
										\$281.70	\$321.54	\$323.88							
											\$283.46	\$317.38							
												\$260.40							

- 50' Vertical Projection
- 10 Cubic Feet/Ton
- \$4,759,797 Contained Value

Laxey Ore Zone: Stope on the Sonneman Level



Primary Ore Zone for Crude Ore Shipments (53,653 Tons) to Utah



DMEA-2: 657'-669.5' (12.5')



DMEA 2: BOX 71: 656' - 666'

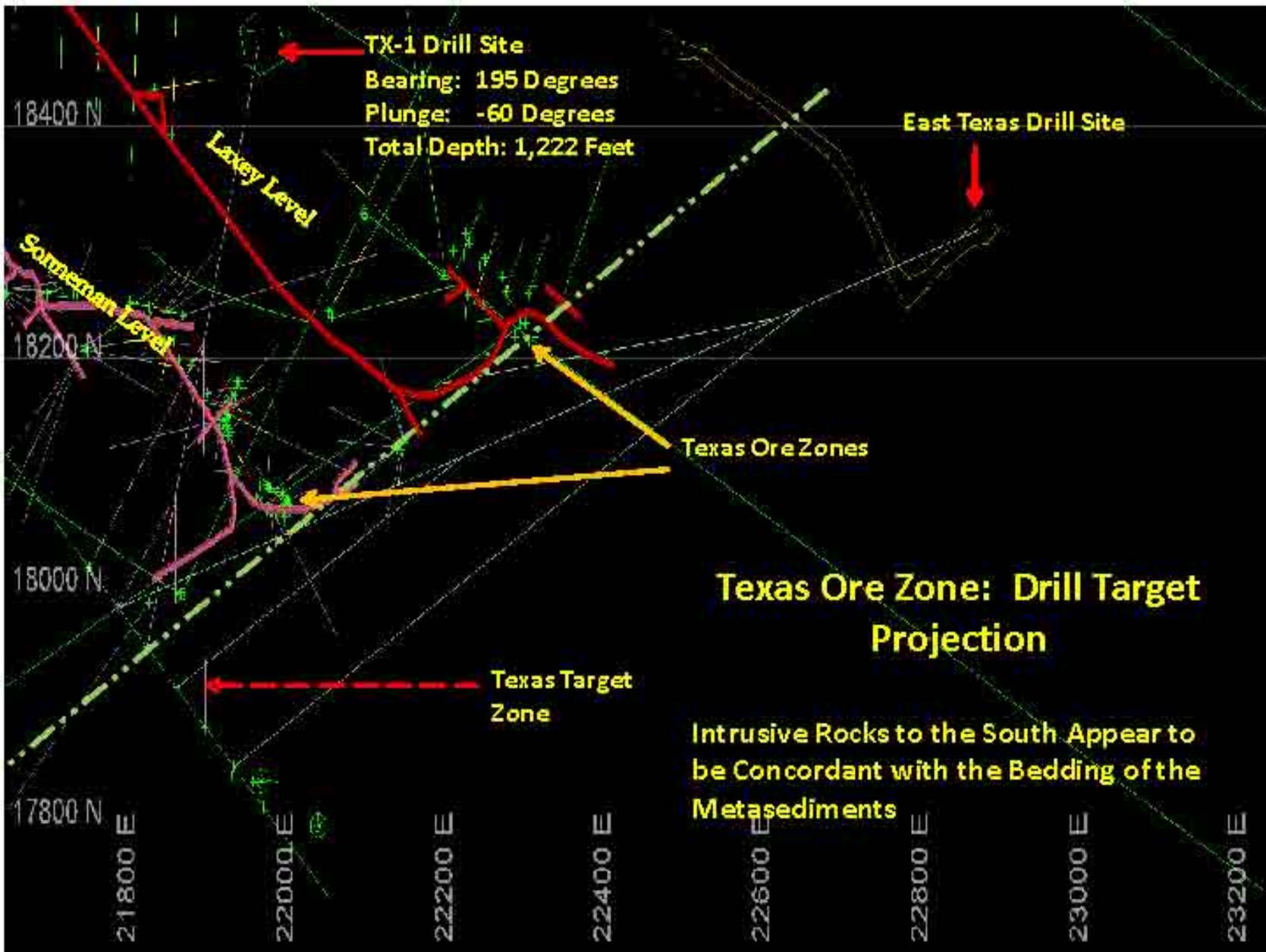
0.066 opt Au: 1.46 opt Ag: 7.76% Zn: 0.276% Cu: 0.306% Pb

DMEA-2: 687'-704.5' (17.5')



DMEA 2: BOX 75; 693' - 702.5'

0.129 opt Au: 1.89 opt Ag: 2.18% Zn: 0.183% Cu: 0.152% Pb



Sonneman Level - Texas Chip Channel Samples

Sample No.	Width (ft)	Gold (opt)	Silver (opt)	Copper (%)	Lead (%)	Zinc (%)
2151	6	0.19	10.00	0.28	4.16	13.47
2152	6	0.53	6.05	0.22	3.08	17.79
2153	8.4	0.16	10.34	0.13	5.11	11.48
2154	5.75	0.31	15.87	0.49	7.18	17.86
2154A	5.75	0.22	42.29	0.18	23.10	14.08
2155	7	0.33	23.16	0.24	11.94	14.68
2155A	7	0.32	9.43	0.15	5.80	17.20
2156	7.5	0.36	6.91	0.23	2.29	15.75
2156A	7.5	0.26	4.47	0.22	1.67	16.10
2157	8	0.23	1.36	0.02	0.22	17.30
2157A	8	0.18	1.78	0.11	1.02	15.60
2158	9.6	0.17	2.75	0.12	1.02	16.97
2159	9	0.13	2.00	0.10	0.79	15.40
2160	6.6	0.12	6.60	0.23	4.51	15.16
2161	4.2	0.06	1.92	0.17	1.00	11.10
2162	6	0.10	1.48	0.06	0.68	12.88
2163	5	0.16	2.80	0.16	0.47	3.00
2164	6	0.06	2.40	0.08	0.65	16.20
2165	6.4	0.06	3.56	0.09	0.95	12.48
2166	4	0.09	2.15	0.06	1.00	17.15
2177	2	0.04	4.78	0.16	2.70	16.67
2178	5	0.06	2.66	0.18	1.12	14.89
2179	5	0.00	0.93	0.05	0.14	1.70
2180	5	2.00	12.31	0.19	8.20	12.63
Average		0.26	7.42	0.16	3.70	14.06

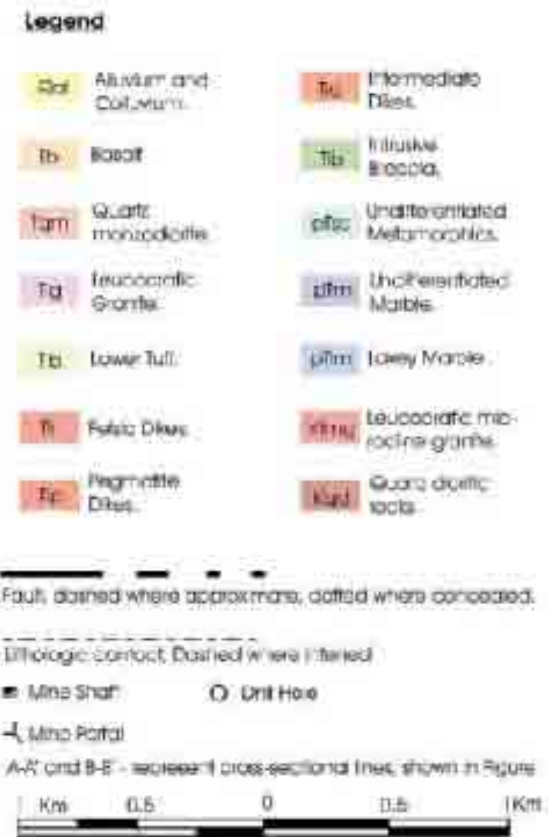
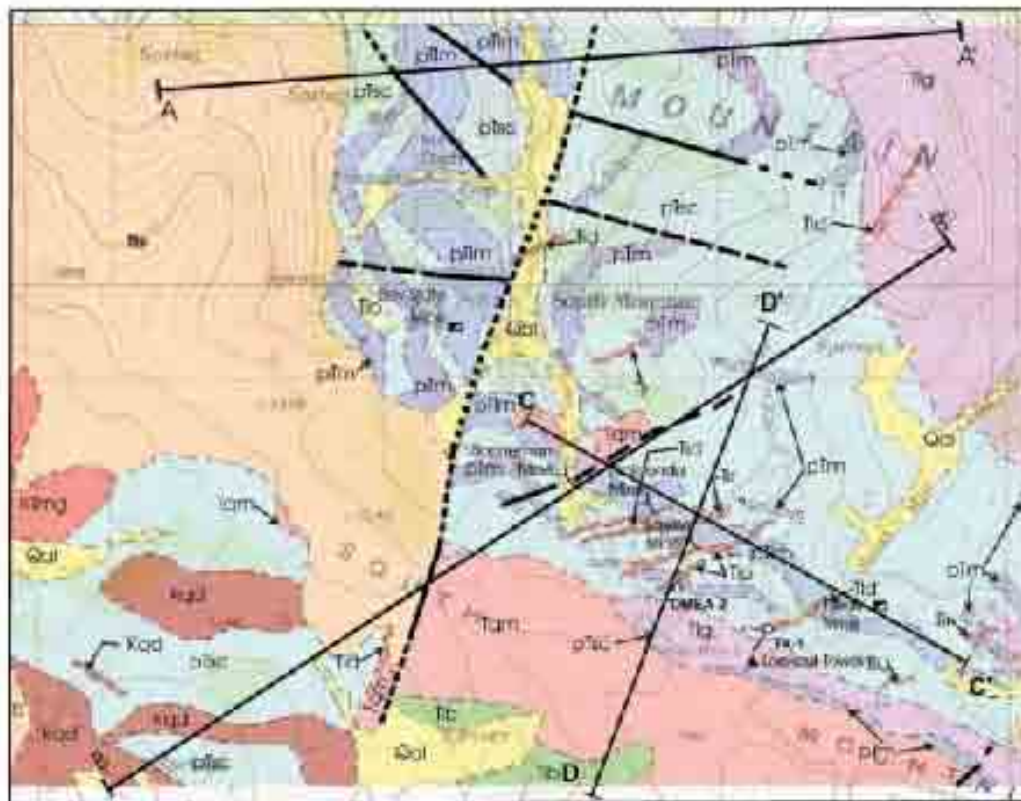
**South Mountain
Mines 1984 Channel
Sample Results from
the Texas Ore Zone
on the Sonneman
Level (~70 Feet)**

Sample Length & Assay

- 2180: 5' @ 2.0 opt Au
- 2154A: 5.75' @ 42.29 opt Ag
- 2154: 5.75' @ 0.49% Cu
- 2154A: 5.75' @ 23.1% Pb
- 2152: 6' @ 17.79% Zn

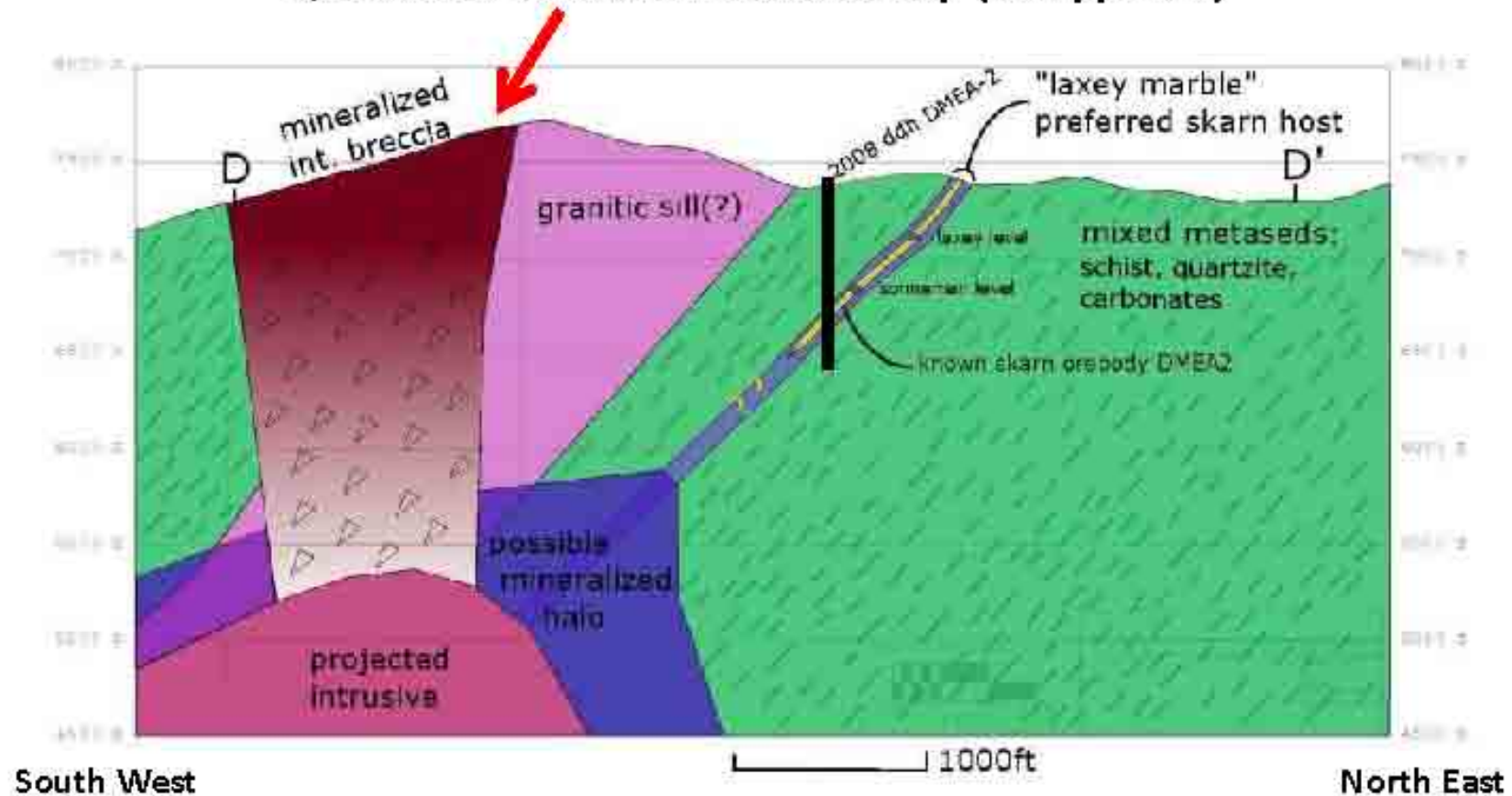
South Mountain Geology

- ❑ Isolated Exposure of Metasedimentary (Triassic?) and Intrusive Rocks
- ❑ Mineralization Occurs as Skarn-Hosted, Zinc-Rich Polymetallic Sulfide Bodies and as Silver-Lead Replacement Veins
- ❑ Massive Sulfide: Pyrrhotite+Sphalerite+Chalcopyrite+Galena
- ❑ Ore Zones Trend at 250°; -50° SW: Possible Au/Zn and Ag/Cu Correlation



South Mountain Project: Intrusive Breccia Au Target

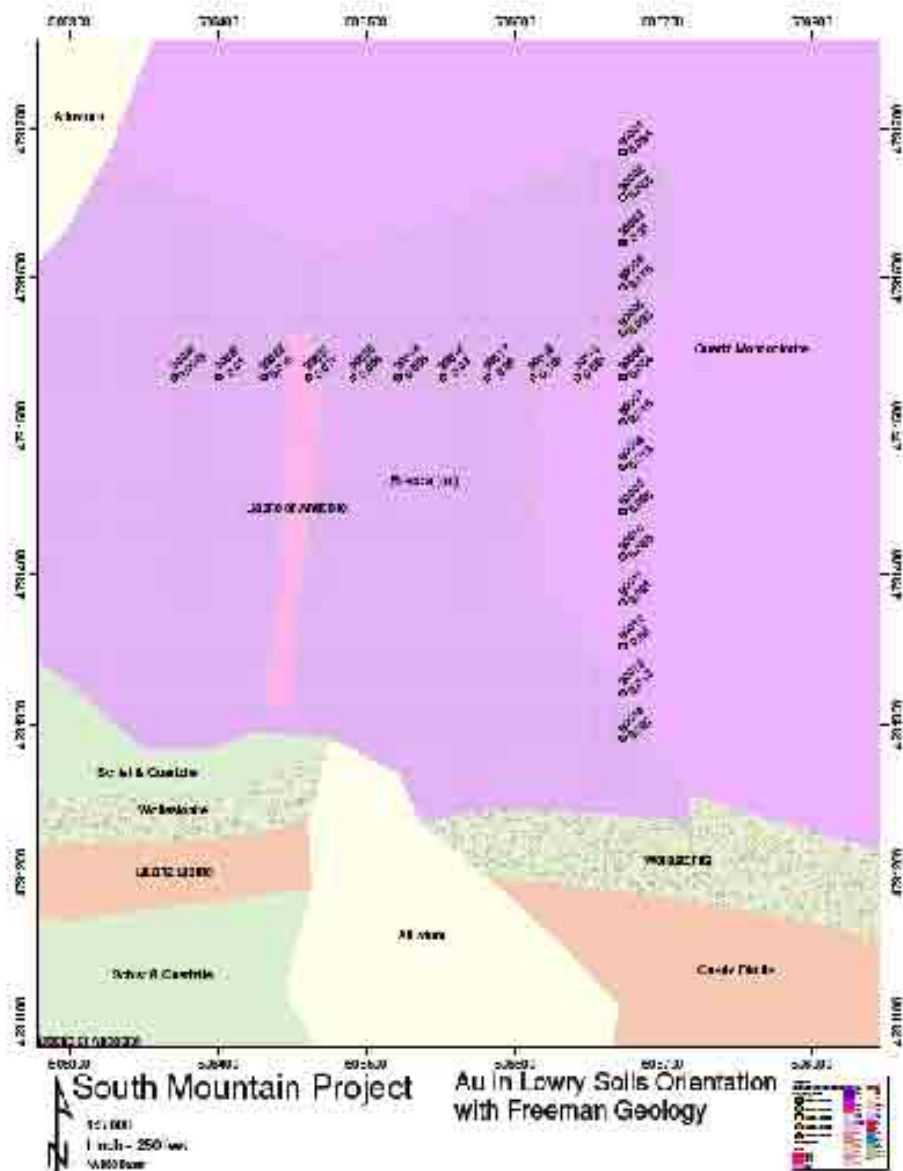
Intrusive Breccia Zone (5,000' x 1,500'): 0.49 ppm – 1.7 ppm Au Rock chips
1,000' x 800' Orientation Soil Anomaly (0.31 ppm Au)



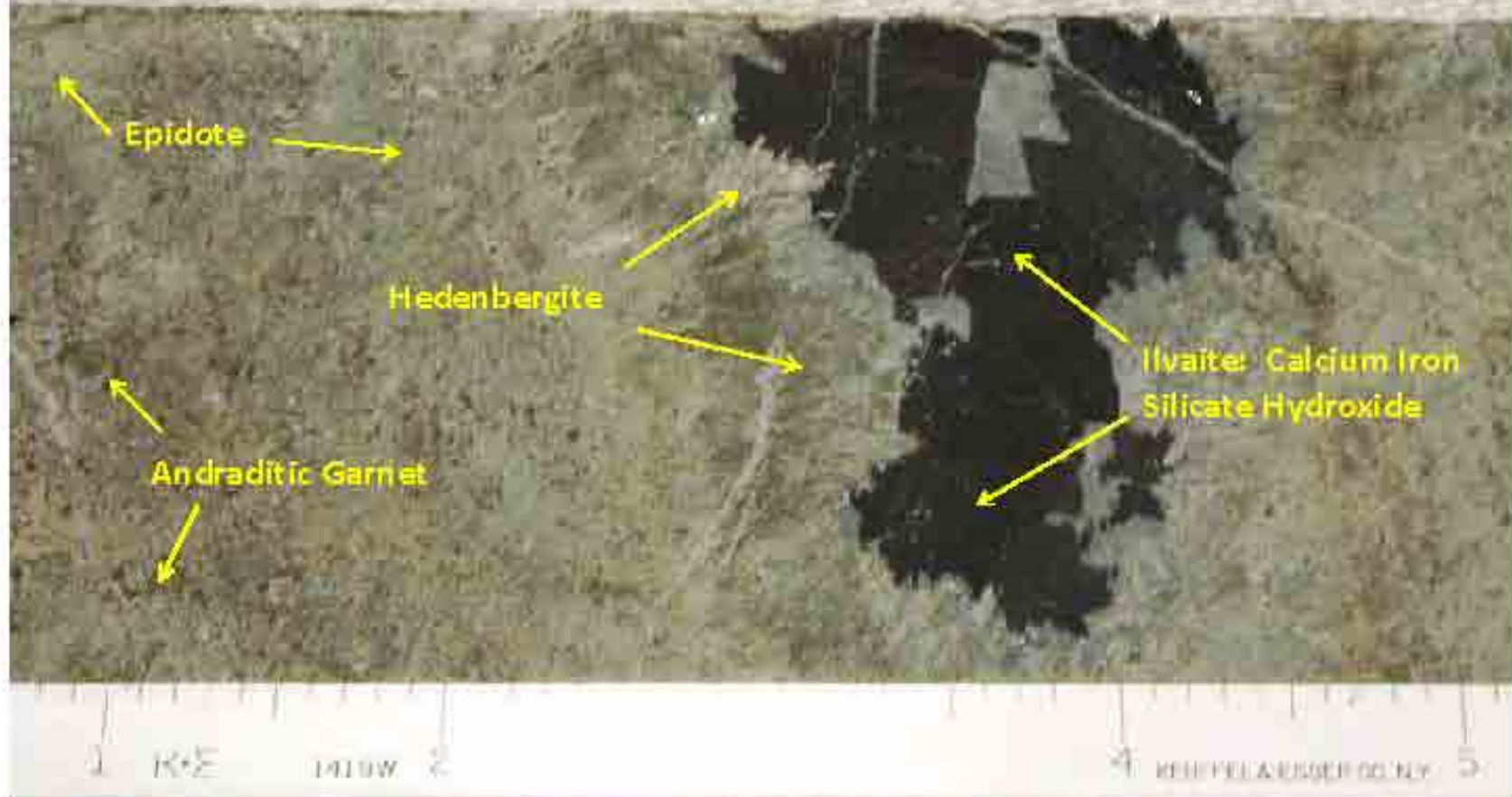
South Mountain Intrusive Breccia Au Target

Orientation Soil Survey
1,000'x 800' Au Soil
Anomaly

.012 ppm to 0.31 ppm Au

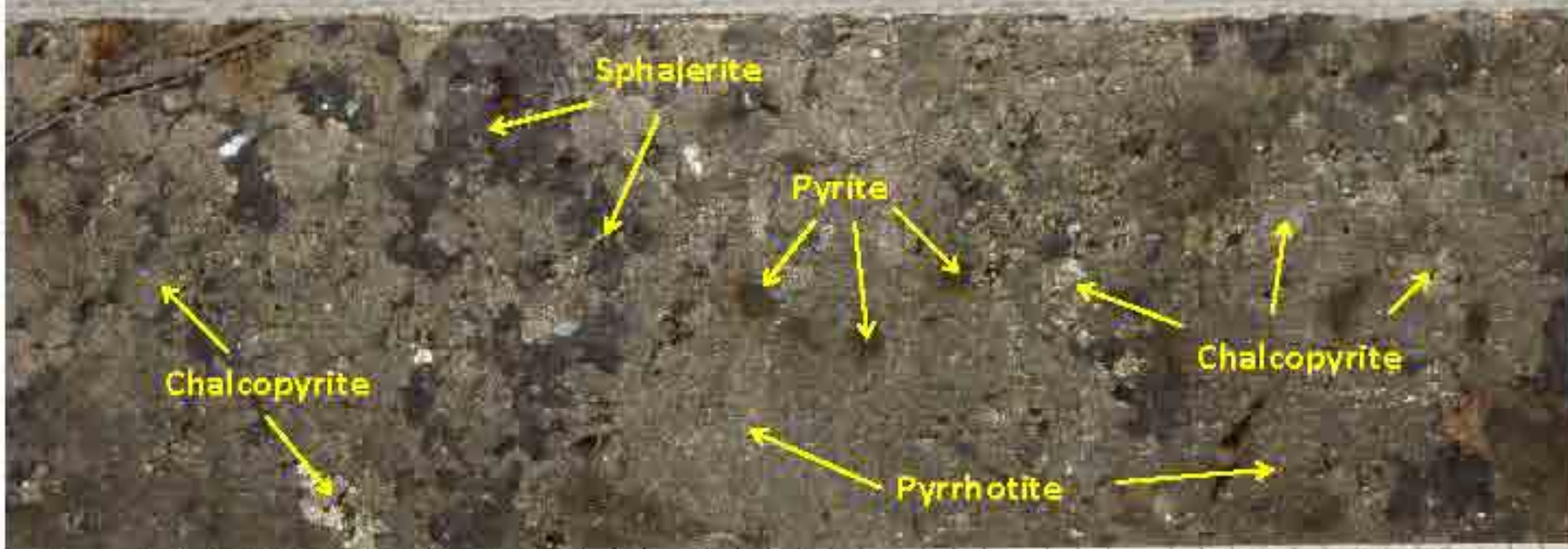


Selected Core Sample: DMEA-2 678' - 680'

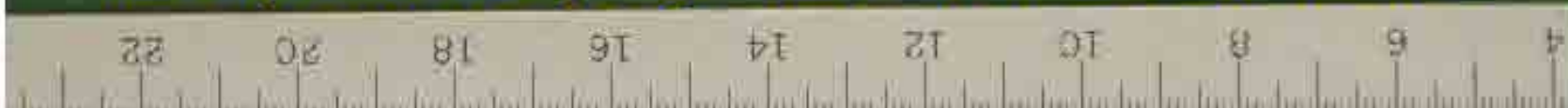


Skarn Mineralization Proximal to Ore Zones

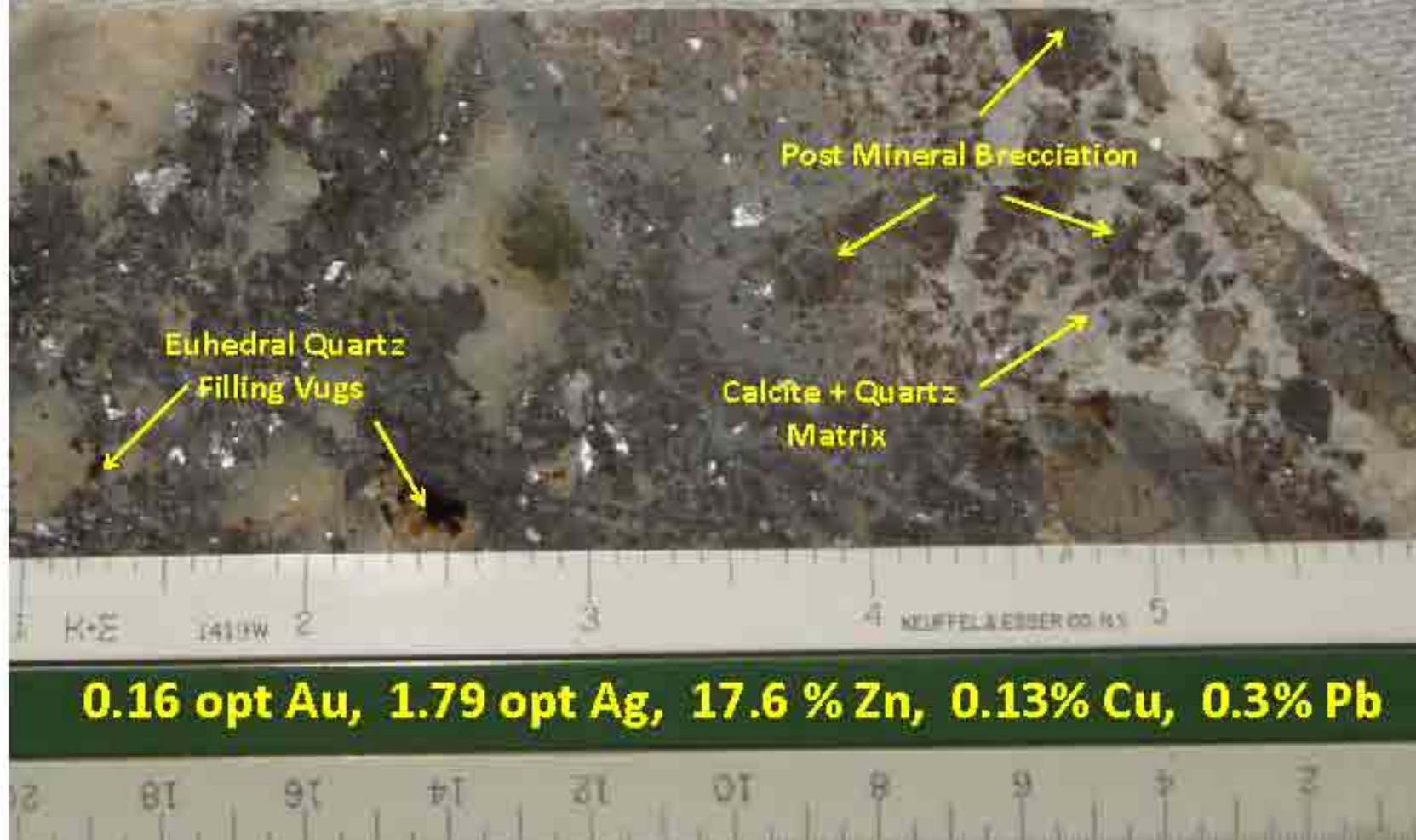
Selected Core Sample: DMEA-2 692'-693.5'



0.33 opt Au, 5.1 opt Ag, 8.1 % Zn, 0.38% Cu, 0.3% Pb



Selected Core Sample: DMEA-2 659.5' - 660.5'



Gold Bearing Intrusive Breccia

Sub-rounded Quartz
Monzonite Fragments

Silicified Schist

FeOx Rinds

Quartz Veinlets
Cutting Multiple
Lithologies

0.05 opt Au



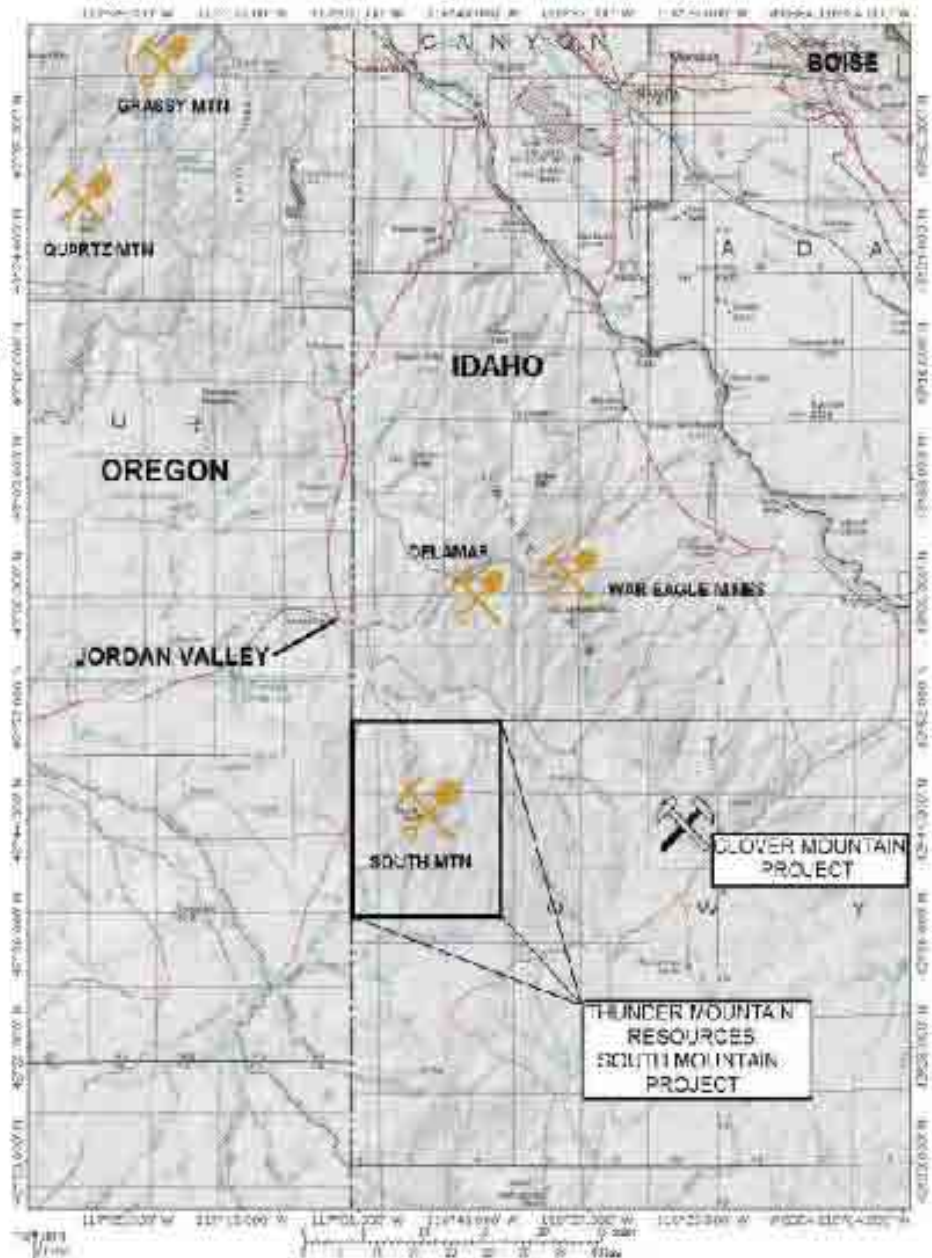
Clover Mountain Project

Located in Sections 24, 25; T.8S.;
R.1W. and Sections 19, 30;
T.8S.; R.1E. Boise Meridian, Owyhee
County, Idaho

Latitude: 42° 42' 34" North
Longitude: 116° 24' 10" West

Approximately 60 air miles SW of
Boise, Idaho and approximately 30
miles SW of Gandview, Idaho

40 unpatented mining claims (800
acres)



Clover Mountain Project

- ❑ Epithermal Gold/Silver Stock Work-Fissure Veins Hosted by Cretaceous/Tertiary Granite
- ❑ > 1 Square mile of Hydrothermally Altered Intrusive and Extrusive Rock
- ❑ 0.02-.058 opt Au in Stockwork Qtz Fracture Filling
- ❑ Anomalous Base Metal Values Ranging from a Trace to 1.25% Cu and from a Trace to 1.54% Zn
- ❑ Two Northeast Trending Au Soil Anomalies



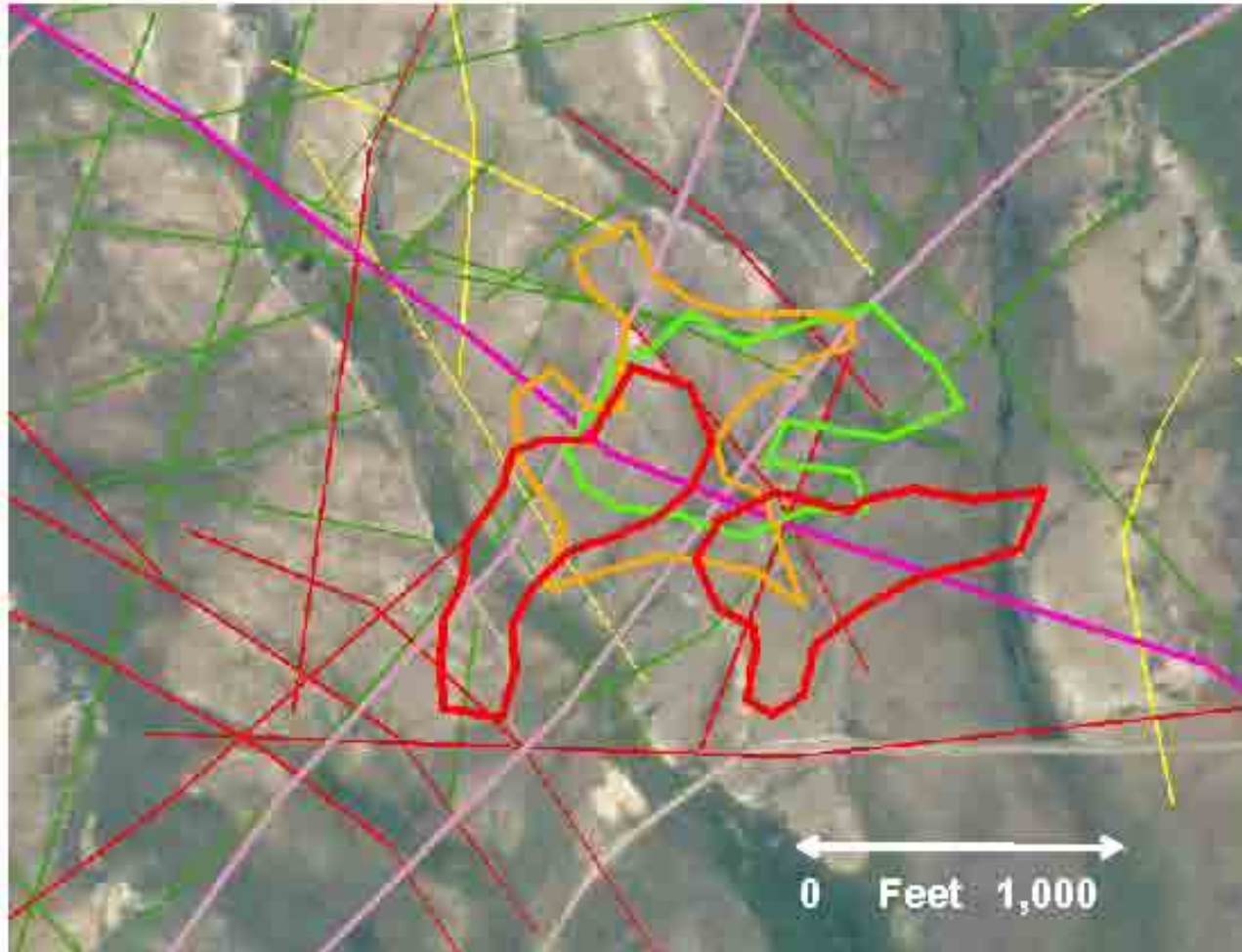
Clover Claims Au in soils (PPM)

Clover Mountain Soil Geochemistry

- ❑ 215 Samples
- ❑ Initial 1500'x600'
Grid Spacing
- ❑ 200'x200' Infill
Grid Spacing
- ❑ Anomalous Au
Values Range
from a Trace to
783 ppb

Clover Mountain Soil Geochemistry

Two Lobes of Au Mineralization Trending 040 and 060 Degrees Az



**Rough Geochem
Contours**

**Au >20ppb:
Red**

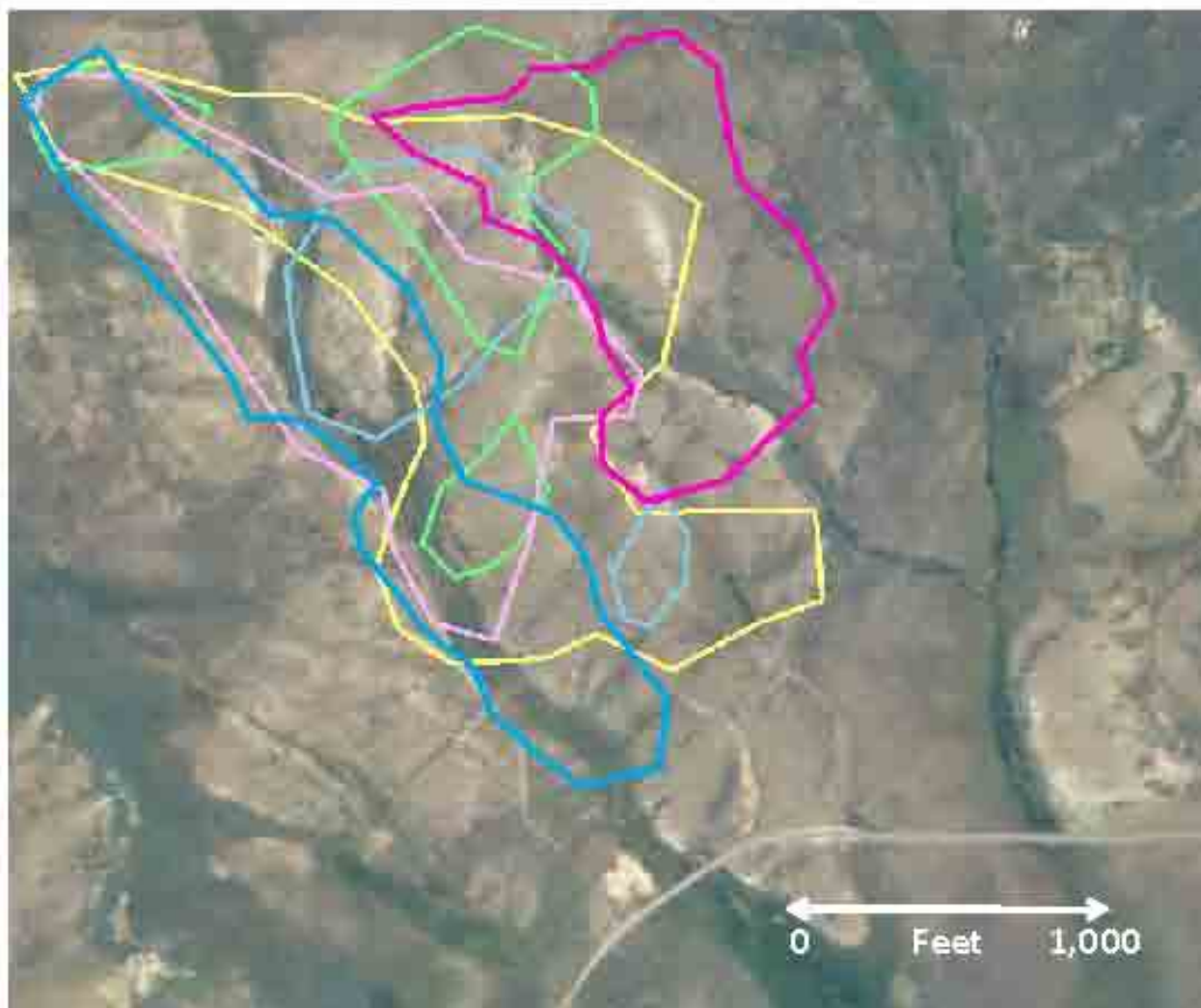
**Ag >500ppb:
Green**

**As >50ppm:
Orange**

0 Feet 1,000

Clover Mountain Soil Geochemistry

Zn and Other Pathfinder Elements Trending at 305 Degrees Az



Rough Geochem Contours

Zn >100ppm:
Dark Blue

Sb >1.0ppm:
Light Blue

S >0.05%:
Fuscia

Hf >0.3ppm:
Green

Th >5.0ppm:
Yellow

Cd >0.5ppm:
Pink

Trout Creek Project Nevada

Located in Sections 10, 11, 14, 16,
21, 22, 27; T.29N.; R.44E. Mount
Diablo Baseline & Meridian,
Esmeralda County, Nevada

Latitude: 40° 23' 36" North
Longitude: 117° 00' 58" West

Approximately 155 air miles NE of
Reno, Nevada and approximately 20
mile SW of Battle Mountain, Nevada

60 unpatented mining claims (1,200
acres)

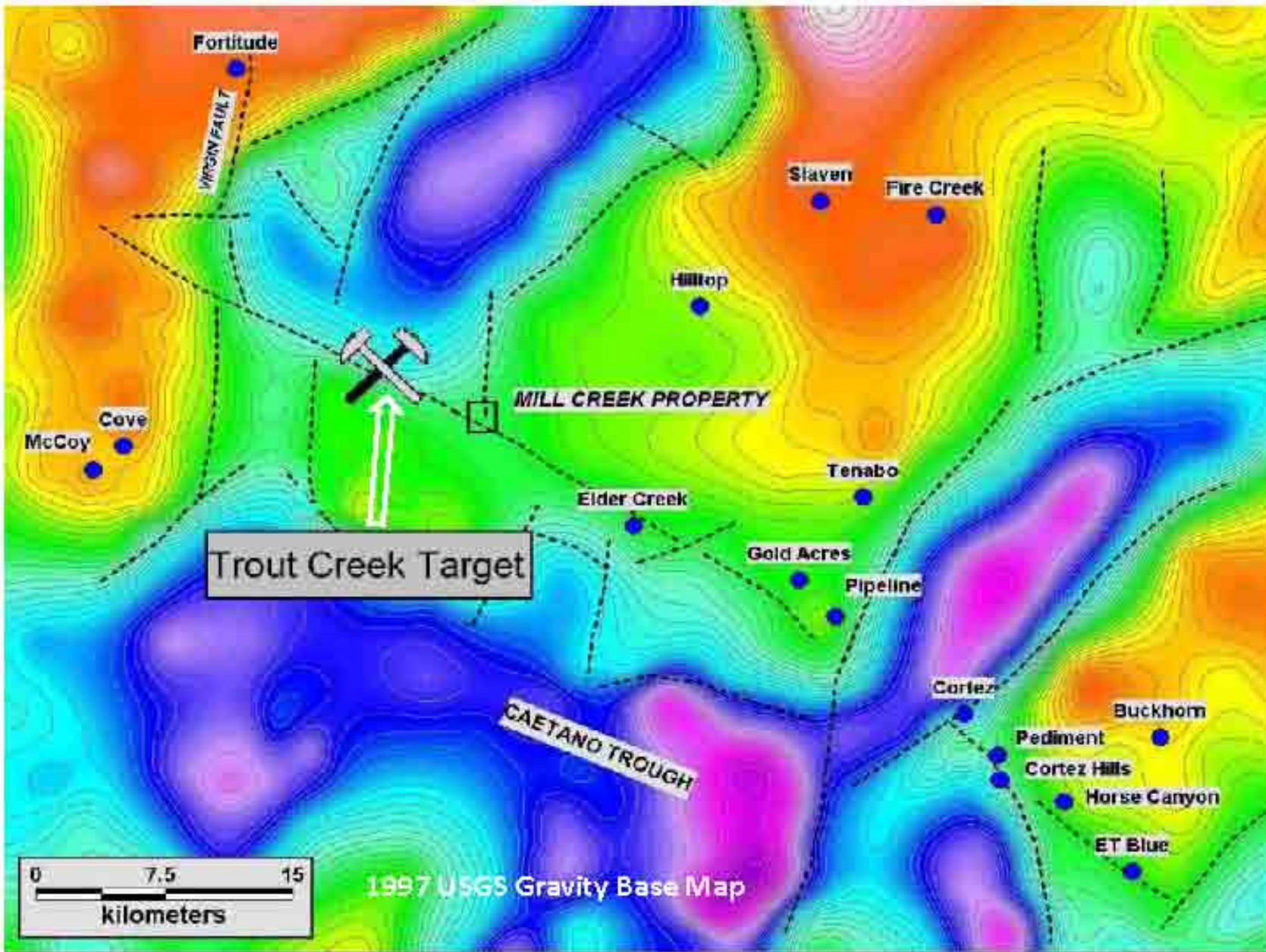




- ❑ Target Defined by Regional Gravity High-Low Flexure
- ❑ Ground Magnetic Anomaly Confirmed by THMG
- ❑ Trout Creek Target is Located at the Intersection of a Northwest Trending Mineral Belt and North-South Trending Extensional Structures

Trout Creek Target Area





West Tonopah Project Nevada

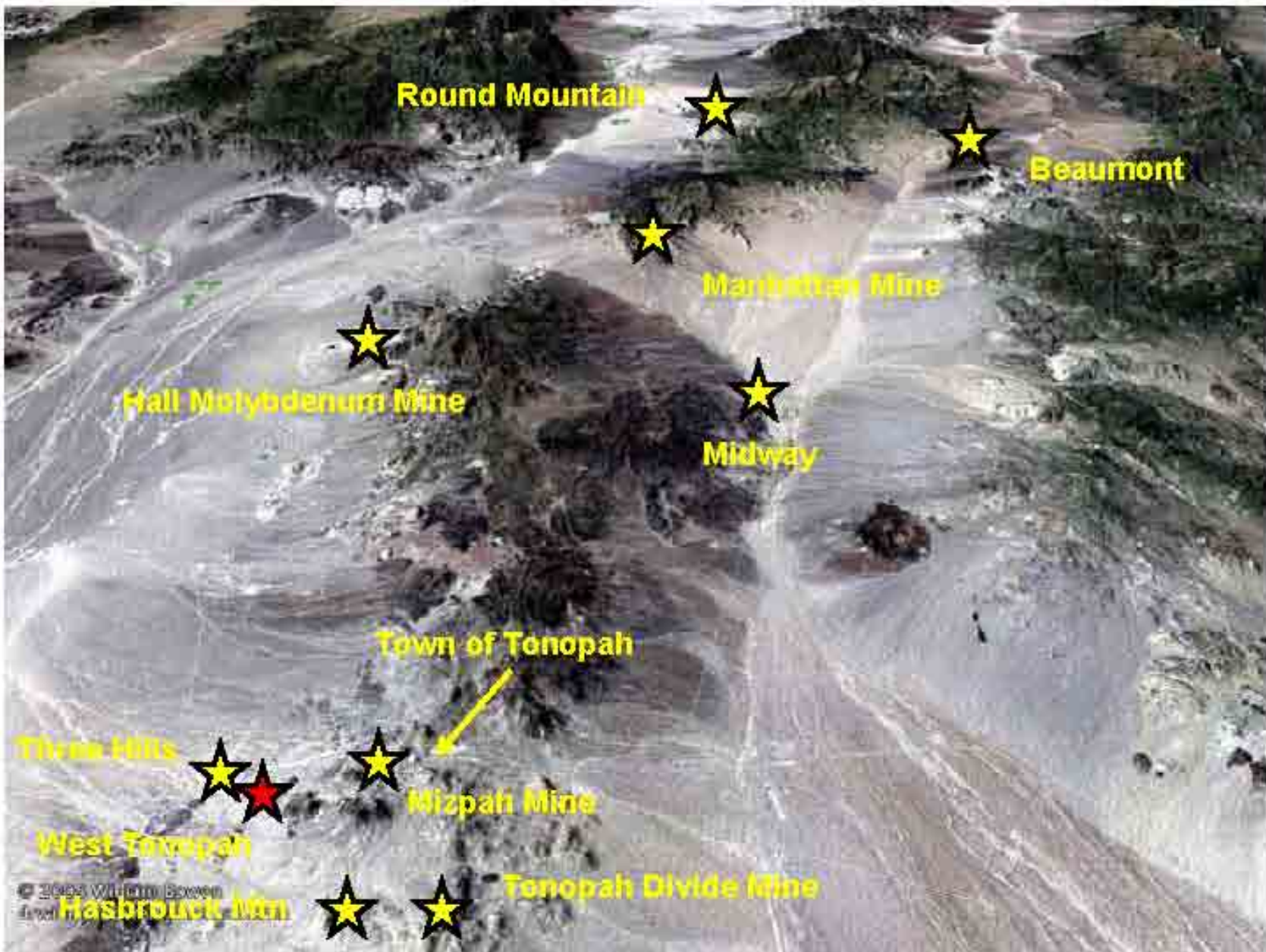
Located in Section 3; T.2N.; R.42E.
and Section 34; T.3S.; R.42E. Mount
Diablo Baseline & Meridian,
Esmeralda County, Nevada

Latitude: $38^{\circ} 03' 40''$ North
Longitude: $117^{\circ} 15' 04''$ West

Approximately 150 air miles SE of
Reno, Nevada and approximately
One mile SW of Tonopah, Nevada

Eight unpatented mining claims (160
acres)





West Tonopah Project Looking Northeast from Allied Nevada Gold's Three Hills Project

Tonopah

West Tonopah
Claim Group



Tonopah Project

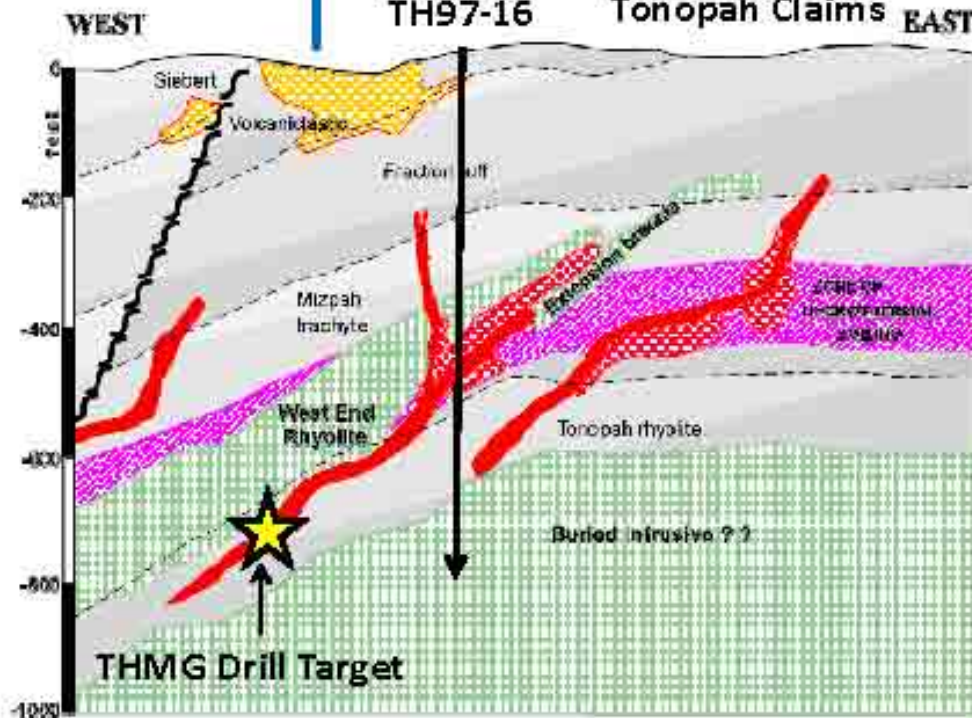
NEVADA

THMG West
Tonopah Claims

Schematic Cross Section

Eastfield Resources Ltd

TH97-16 Tonopah Claims EAST



Thunder Mountain Gold: West Tonopah Claim Group

Drill Target: South West Extension of the Ohio Vein at the Contact Between the West End and Tonopah Rhyolites

DH TH97-16: 10' (410-420')
@ 0.22 opt Au, 8.4 opt Ag Reported



Portland Claim Group

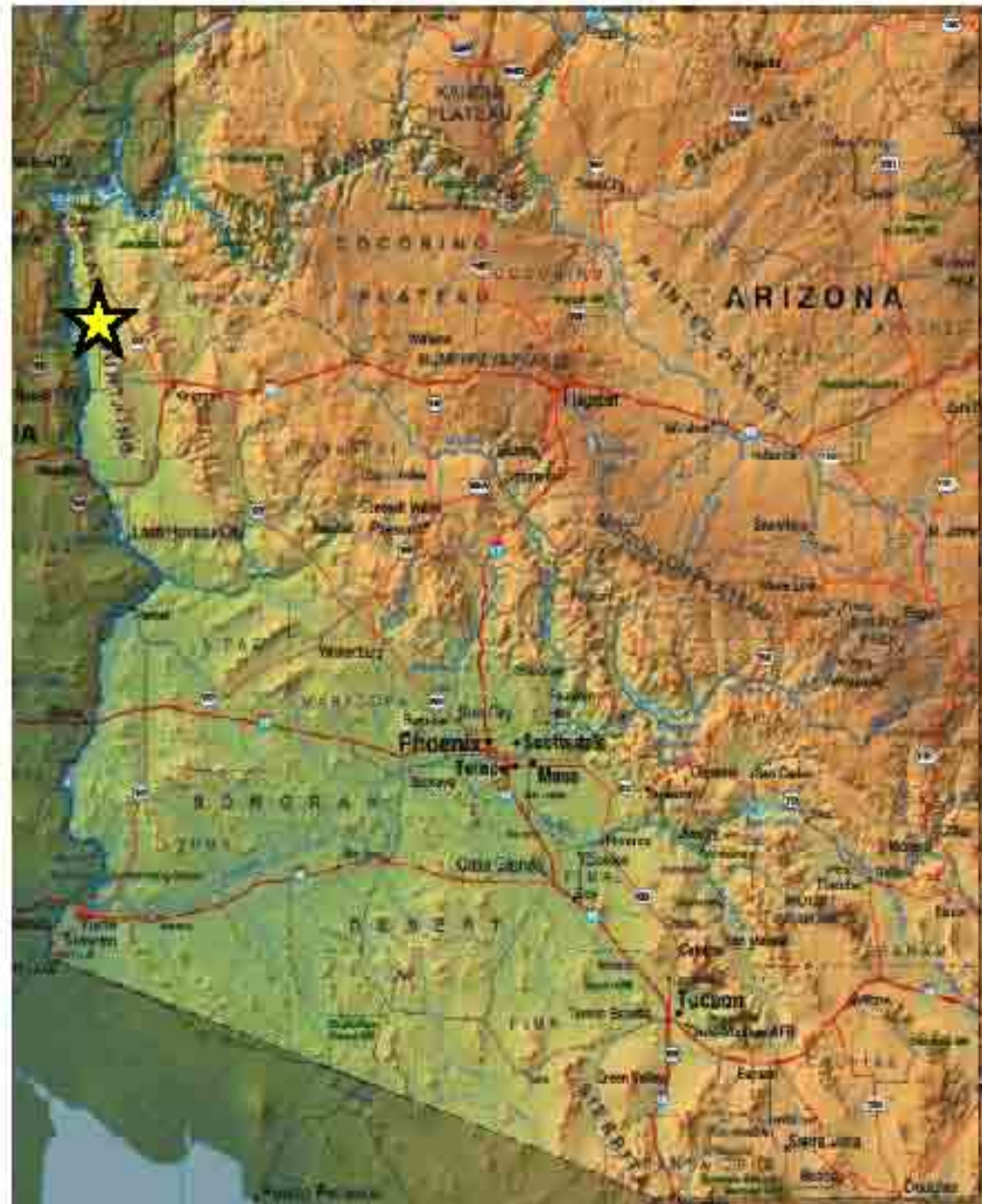
Located in Section 12, T.23N.;
R.21W. Gila Salt River Base &
Meridian, Mohave County,
Arizona


Latitude: 35° 23' 50" North
Longitude: 114° 28' 47" West

Approximately 65 air miles SE
of Las Vegas, Nevada and
approximately 30 mile NW of
Kingman, Arizona

19 unpatented mining claims
(380 acres)

Target: Low Angle Detachment
Structures Between Tertiary
Rhyolite and Precambrian
Intrusives





**Low Angle Structural Contact
Between Tertiary Volcanics and
Precambrian Gneiss**

**7.55 ppm Au in Calcite
Supported Breccia**

**Western States Portland Mine
Looking Northwest
(Approximately Three Million Tons Mined in 1982-83)**

Portland Claim Group Looking West

1.35 ppm Au in Silicified
Rhyolite Breccia



Portland Claim Group: 1.35 ppm Au in Silicified Rhyolite+Calcite
Breccia. Located 1.5 Miles NE of Portland Mine

Gold Hill Claim Group

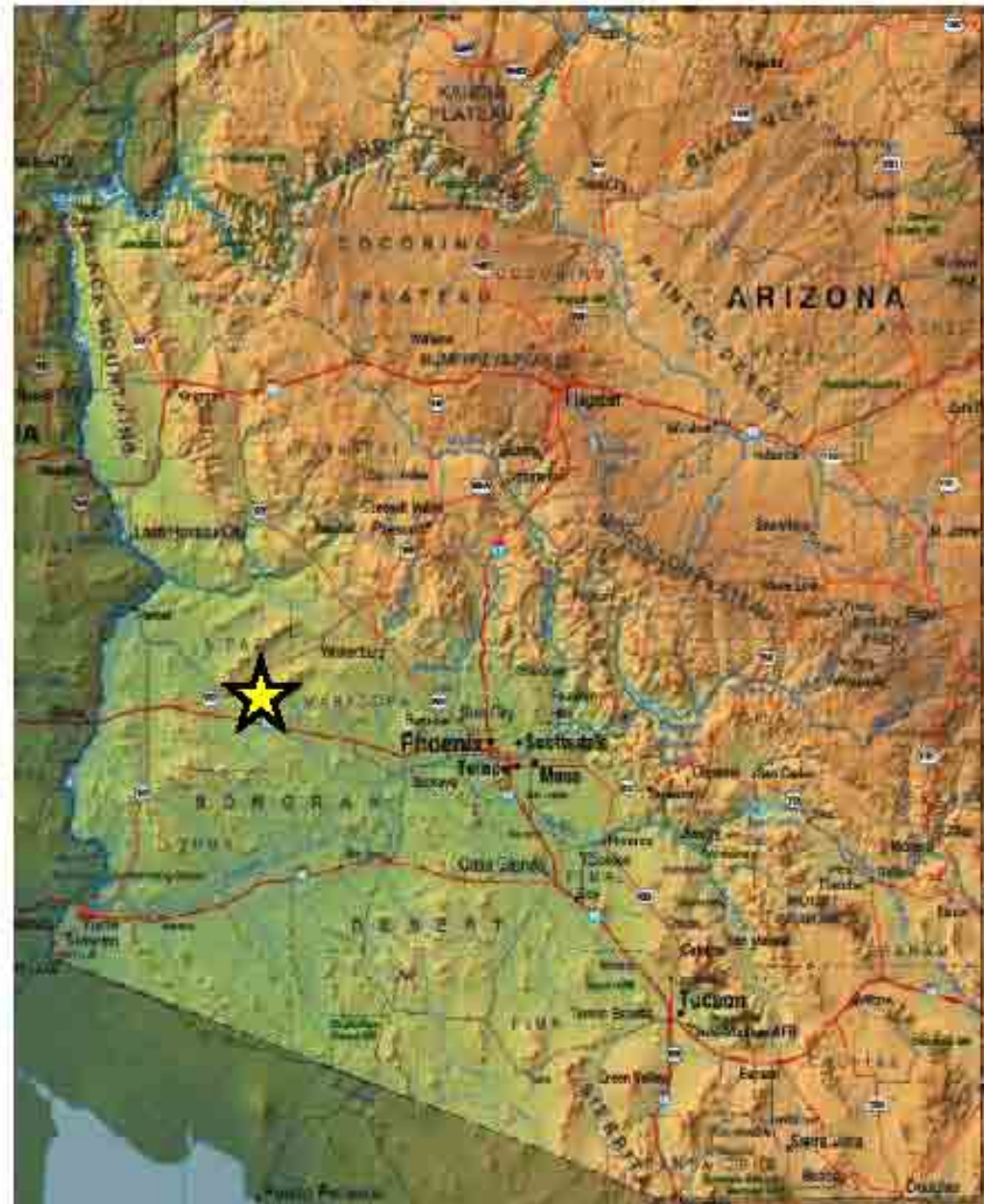
Located in Sections 1 and 12,
T.4N.; R.13W. Gila Salt River
Base & Meridian, La Paz
County, Arizona

Latitude: 33° 42' 42" North
Longitude: 113° 32' 54" West

Approximately 100 air miles
NW of Phoenix, Arizona and
approximately six mile SE of
Salome, Arizona

22 unpatented mining claims
(440 acres)

Target: Low Angle Detachment
Structures Between Paleozoic
Metasediments and
Precambrian Intrusives



Gold Hill Claim Group Looking Southwest



Gold Hill Claim Group: 5.14 ppm Au, 0.39% Cu in Silicified, FeOx Stained, Brecciated Gneiss. Located 3.5 Miles NE of the Little Harquahala Mine

Historic Prospects on the Gold Hill Claim Group

Silicified Metasediments:
5.14 ppm Au, 0.39%Cu



2009 Exploration and Development

(Level 2 Exploration Budget \$691,000)

- Complete Private Placement
- South Mountain: 10,000' RC/Core Drill Program
 - Texas Ore Zone
 - Intrusive Breccia
 - DMEA-2 Deep
 - Laxey Deep
- Open Texas Ore Zone on Sonneman Level
- Acquire Remaining Private Parcels at South Mountain
- Clover Mountain: 1,000' RC/Drill Program
- Option Trout Creek and Tonopah Properties
- Advance Gold Hill and Portland Properties
- Northwest Nevada Exploration: Magnetics/Gravity
Geochem/Precambrian Lineaments