



Analyst Meetings

Boston

July 11-12, 2006



Safe Harbor

This presentation and other Company reports and statements issued or made from time to time contain certain “forward-looking statements” concerning projected financial performance, expected plans or future operations. Southern Union Company cautions that actual results and developments may differ materially from such projections or expectations.

Investors should be aware of important factors that could cause actual results to differ materially from the forward-looking projections or expectations. These factors include, but are not limited to: cost of gas; gas sales volumes; gas throughput volumes and available sources of natural gas; discounting of transportation rates due to competition; customer growth; abnormal weather conditions in Southern Union’s service areas; impact of relations with labor unions of bargaining-unit employees; the receipt of timely and adequate rate relief and the impact of future rate cases or regulatory rulings; the outcome of pending and future litigation; the speed and degree to which competition is introduced to Southern Union’s natural gas distribution businesses; new legislation and government regulations and proceedings involving or impacting Southern Union; unanticipated environmental liabilities; ability to comply with or to challenge successfully existing or new environmental regulations; changes in business strategy and the success of new business ventures, including the risks that the business acquired and any other business or investment that Southern Union has acquired or may acquire may not be successfully integrated with the business of Southern Union; exposure to customer concentration with a significant portion of revenues realized from a relatively small number of customers and any credit risks associated with the financial position of those customers; factors affecting operations - such as maintenance or repairs, environmental incidents or gas pipeline system constraints; Southern Union’s or any of its subsidiaries’ debt security ratings; the economic climate and growth in the energy industry and service territories and competitive conditions of energy markets in general; inflationary trends; changes in gas or other energy market commodity prices and interest rates; current market conditions causing more customer contracts to be of shorter duration, which may increase revenue volatility; the possibility of war or terrorist attacks; the nature and impact of any extraordinary transactions, such as any acquisition or divestiture of a business unit or any asset.

Contact:
Southern Union Company
Jack Walsh, 800-321-7423
jack.walsh@sug.com



SUG Highlights

- NYSE listed Common Stock (ticker: SUG)
- Equity market capitalization approximately \$3.0 billion
- Total assets over \$5.8 billion
- Annual cash dividend of \$.40 per share
 - *Yield approximately 1.5%*
- Investment grade credit ratings
 - BBB - Standard & Poor's
 - Baa3 - Moody's Investor Services
 - BBB - Fitch Ratings



The Transforming Years

Southern Union entered the 21st century as the owner of four regulated gas LDC's

Five years later, Southern Union is the second-largest owner and operator of gas pipelines in the U.S. with an unprecedented number of growth opportunities

GROWING FORWARD

2001

2002

2003

2004

2005

2006

Four LDCs

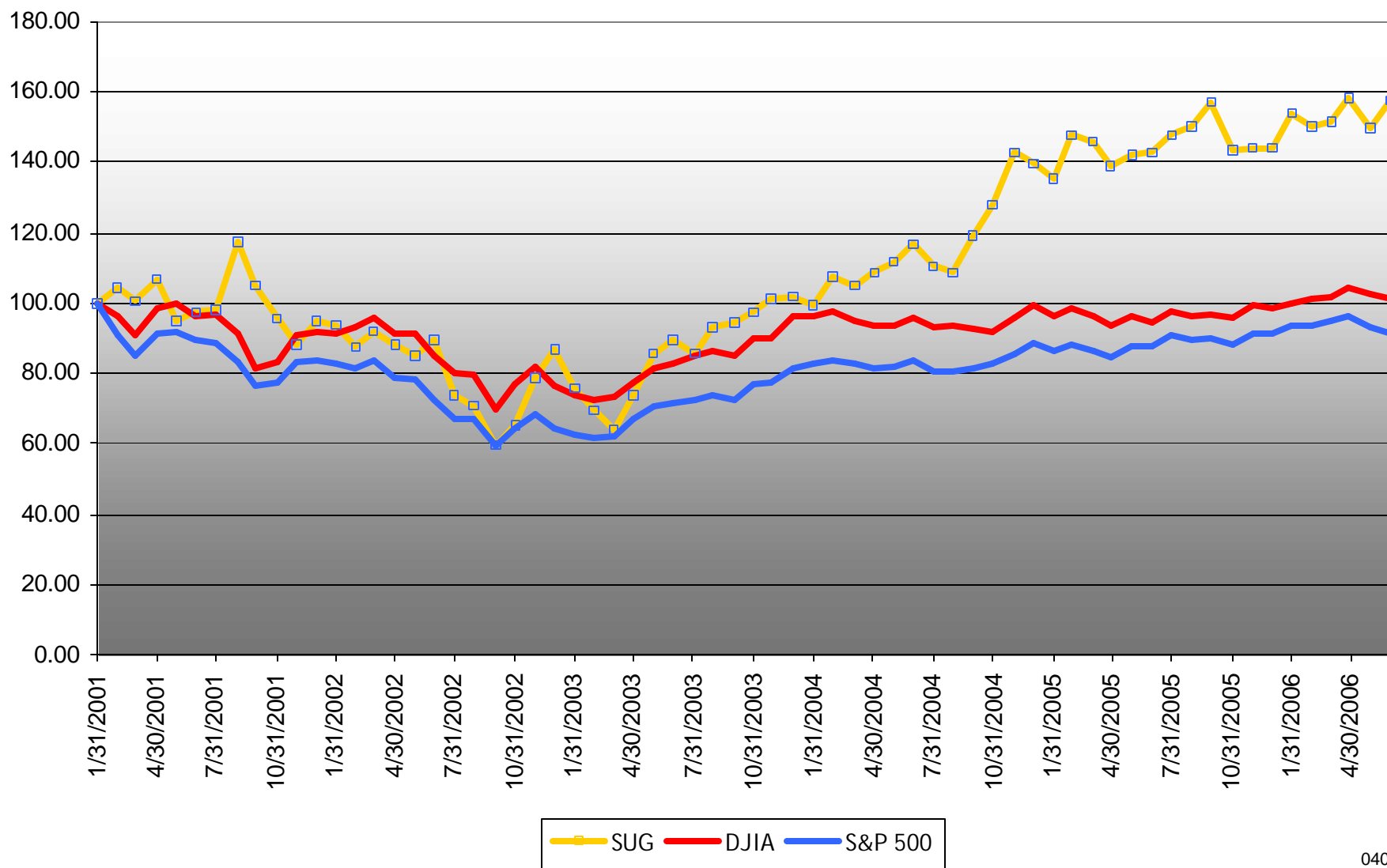
- Acquisition of Panhandle
- Sale of Texas Gas

Acquisition of CrossCountry

- Acquisition of Sid Richardson
- Sale of PG Energy
- Sale of RI LDC



Share Price Performance





Value Creation Strategy

- Move to higher returning businesses
 - 2003: Acquisition of Panhandle/Sale of Texas LDC
 - 2004: Investment in Cross Country
 - 2006: Acquisition of Sid Richardson/Sale of PA & RI LDCs
- Efficiently manage existing assets
 - Integration of Panhandle and Cross Country
 - MGE rate case
 - Shared services
- Use free cash flow to fund growth and optimize capitalization
 - Reinvest in growth projects
 - Optimize debt level - maintain ratings/maximize return
- Broaden shareholder appeal
 - Change in FY from June to December
 - Cash dividend
 - Improved transparency of disclosures



Expansive Footprint





Pipeline Assets

- **Panhandle Eastern Pipe Line (PEPL)**
 - 6,500 mile 4-line system
 - 2.8 Bcf/d capacity
 - Avg. contract life of 4 yrs
- **Trunkline Gas (TGC)**
 - 3,500 mile 2-line system
 - 1.5 Bcf/d capacity
 - Avg. contract life of 10 yrs
- **Sea Robin**
 - 450 mile offshore system
 - 1.0 Bcf/d capacity
 - Avg. contract life of 1 yr
- **Transwestern (TW) 50%**
 - 2,400 mile bi-directional flow system
 - 2.1 Bcf/d capacity (1.2 Bcf/d west; 800 MMcf/d east)
 - 1.2 Bcf/d San Juan to mainline capacity
 - Avg. contract life of 4 yrs
- **Florida Gas (FGT) 25%**
 - 5,000 mile system
 - 2.1 Bcf/d capacity
 - Avg. contract life of 10 yrs



Trunkline LNG Company



- One of North America's largest operating facilities
- Fully contracted with high credit quality counterparty- BG Group - until 2028
- 1.8 Bcf/d baseload sendout
- 9.0 Bcf storage
- Ambient air vaporization and NGL extraction to be in service by 2008

Trunkline LNG is a Leading Player in LNG Sector



Distribution Assets

Missouri Gas Energy



- Headquartered in Kansas City, MO
- Serves approximately 500,000 customers
- Serves 34 counties throughout MO
- Regulated by the Missouri PSC
- Filed for \$41.7 million rate increase

PG Energy



- Headquartered in Wilkes-Barre, PA
- Serves approximately 160,000 customers
- Serves 13 counties in northeastern and central PA
- Regulated by the Pennsylvania PUC
- Announced sale of PA assets to UGI for \$580 million

New England Gas Co.



- Headquartered in Providence, RI
- Serves approximately 300,000 customers
- Serves the state of Rhode Island and SE Massachusetts
- Regulated by the RI PUC and the Massachusetts DT&E
- Announced sale of RI assets to National Grid for \$575 million including assumed debt of \$77 million



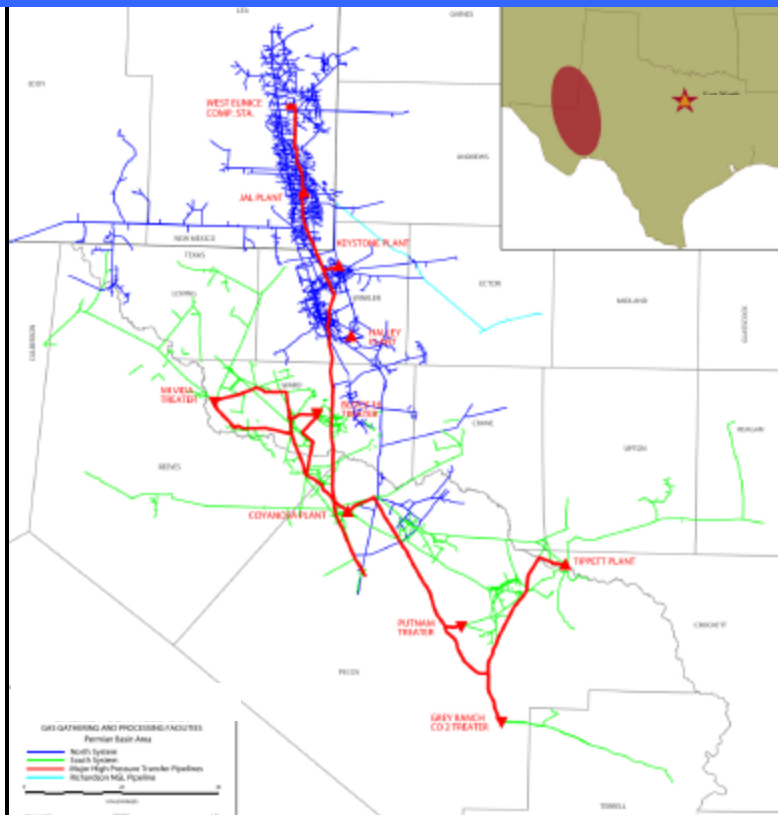
SU Gas Services Overview

- Major provider of gas gathering and processing services in the Permian Basin
- Fully integrated pipeline system
- Reliable operations
- Attractive contract structure
- Strong producer relationships



System Map & Asset Detail

SU Gas Services - Area of Operations



Pipelines

| | |
|-----------------------------------|---------------|
| Total Miles | 4,750 |
| Producer Delivery Points | 1,754 |
| Current Throughput ⁽¹⁾ | 604 Bbtu/d |
| NGL Production ⁽¹⁾ | 34,800 Bbls/d |
| Field Compression HP | 104,840 |

Gas Processing Plants

| | |
|--------------------------------------|------------|
| Active Plants ⁽²⁾ | 4 |
| Processing Capacity ⁽³⁾ | 470 MMcfd |
| Processing Throughput ⁽¹⁾ | 388 MMcf/d |
| Field Compression HP | 127,520 |

Treating Plants

| | |
|------------------------------------|------------|
| Active Plants | 6 |
| Treating Capacity | 765 MMcfd |
| Treating Throughput ⁽¹⁾ | 426 MMcf/d |
| Compression HP ⁽⁴⁾ | 7,200 |

1. As of May 2006.
2. Each of the 4 active processing plants also contain treating plants.
3. Active plants are expandable to 485 MMcf/d.
4. Represents compression HP at the Grey Ranch and Mi Vida treating plants.

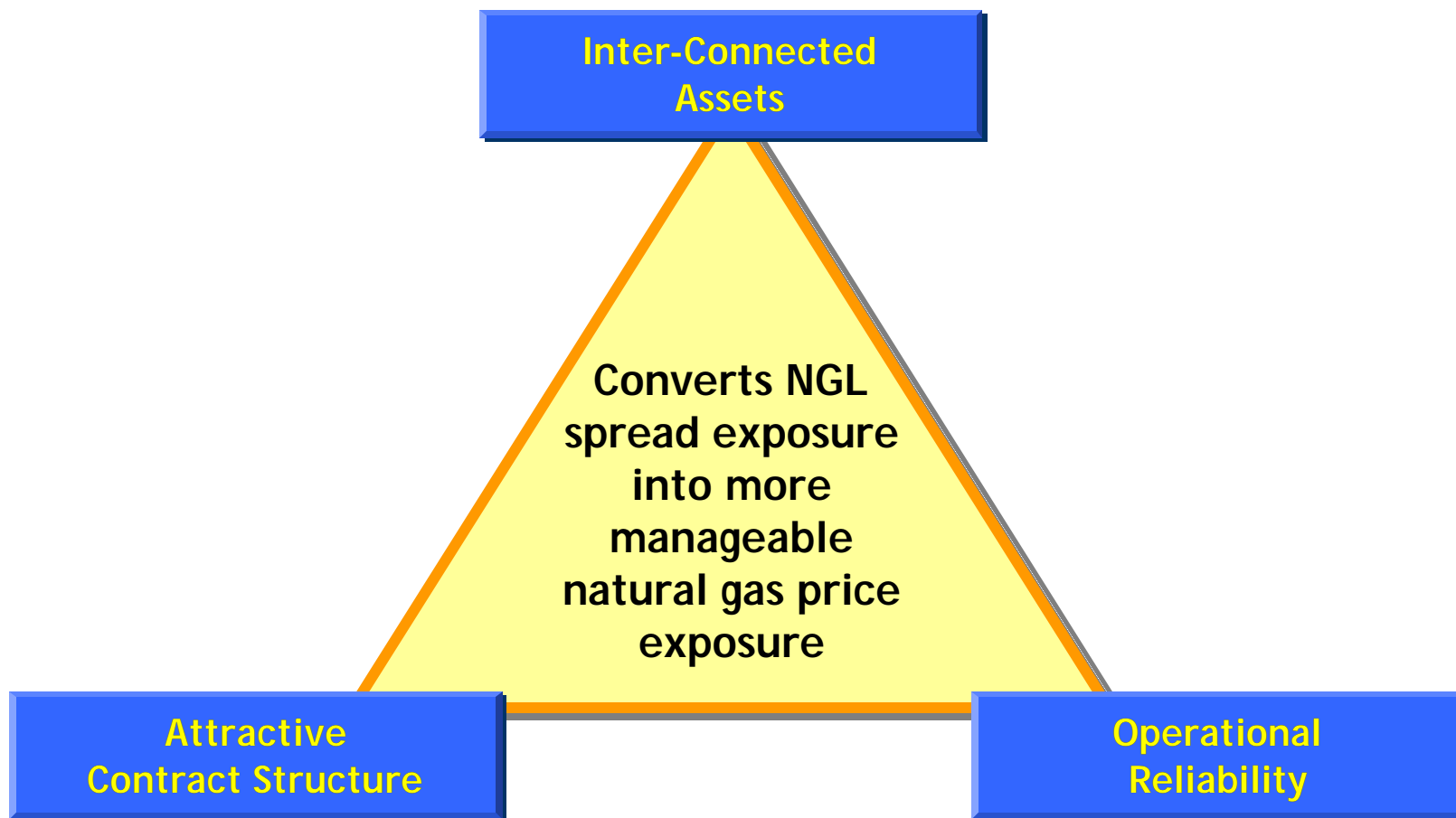


Mitigated Contract Risk

- Percent of Proceeds Contracts
 - 45% by volume
 - 80 - 85% by margin
 - Spreads price risk to both producer and pipeline
 - Fixed recovery and fuel % in contract
 - Allows pipeline and producer to hedge its interests
 - Allows pipeline to benefit from operational flexibility
 - Creates pipeline option to optimize revenue when processing is economic
 - Contract contains recovery of treating, compression and gathering services
- Fee Based / Conditioning Fee Contracts
 - 55% by volume
 - 15 - 20% by margin
 - Contracts contain fixed fees for service
 - Depending on gas quality contracts may contain upside for processing and no downside risk below base fee
 - Creates exposure to diverse producer base with no downside commodity risk

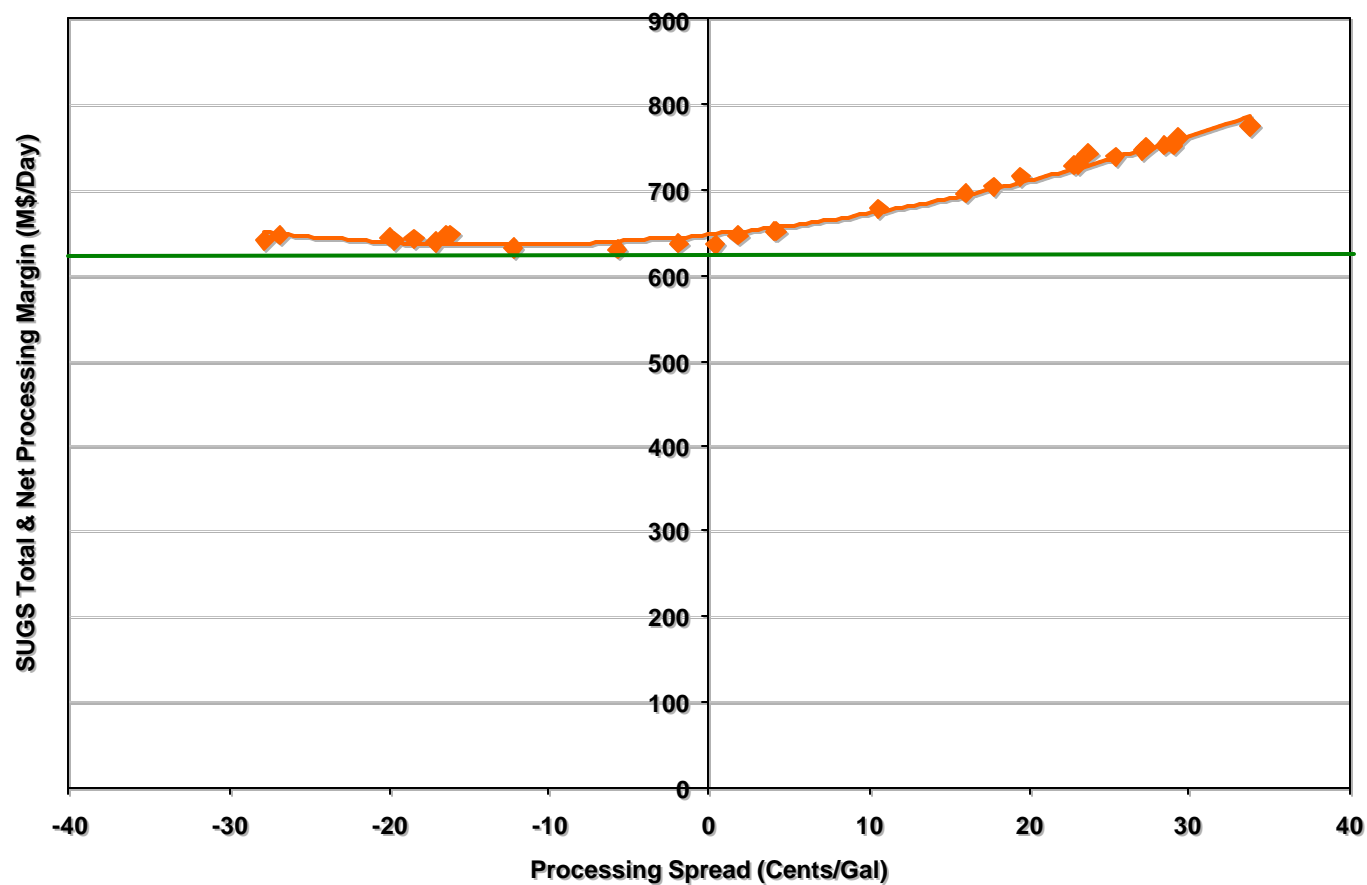


Differentiating Factors





Processing Risk Profile



Waha Avg Daily Gas Price of \$9.10/mmbtu

Data from Nov/Dec 2005 Daily Processing Model
Gas price averaged for the period



Hedging Position

- SUG purchased put options initially to limit downside
 - \$11 floor for 2006 on 45,000 MMBtu/d
 - \$10 floor for 2007 on 25,000 MMBtu/d
- We can hedge effectively on Waha natural gas due to fixed recovery contract structure; effectively eliminates exposure to NGL's and to basis risk



Growth Projects



Strong Organic Growth

| Project Name | Capacity | Est. Cost (\$MM) | Est. EBIT ⁽¹⁾ (\$MM) | In Service | SUG % | Comments |
|-------------------------|-------------------------------|------------------|---------------------------------|---------------|-------|---------------------------|
| TW - San Juan Expansion | 375 MMcf/d | \$140 | \$24 | May 1, 2005 | 50% | Complete |
| TGC LNG Lateral Loop | 1,500 MMcf/d | \$50 | \$18 ⁽²⁾ | July 22, 2005 | 100% | Complete |
| Trunkline LNG Phase I | 570 MMcf/d 2.7 Bcf storage | \$140 | \$28 | April 5, 2006 | 100% | Complete |
| Trunkline LNG Phase II | 600 MMcf/d | \$79 | \$15 - \$20 | July 8, 2006 | 100% | Complete |
| Florida Gas Phase VII | 100 - 160 MMcf/d | \$60 - \$105 | \$8 - \$14 | Mid 2007 | 25% | Received FERC Certificate |
| Trunkline LNG IEP | Vaporization & NGL extraction | \$240 - \$250 | \$30 - \$35 | Mid 2008 | 100% | Filed with FERC |
| Trunkline North Texas | 510 MMcf/d | \$150 - \$160 | \$18 - \$25 | Late 2007 | 100% | 3Q FERC Filing |

1 - Note: EBIT is equivalent to operating income under GAAP.

2 - Represents 100% of available capacity contracted to BG through 2028.

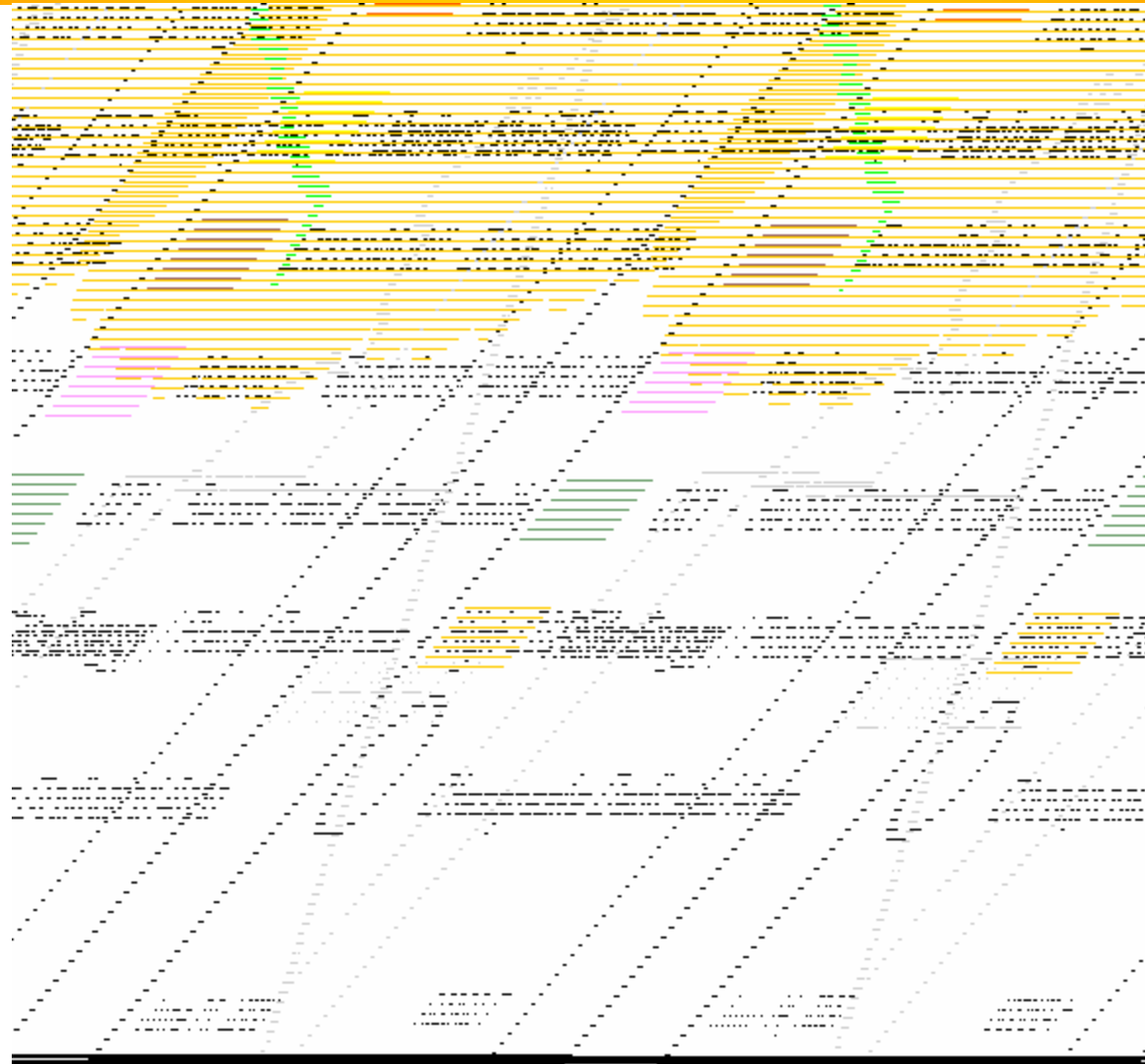


SUGS Growth Projects

- **Deep Atoka Gas Development - Loving, Winkler and Ward Counties, Texas**
 - ~200MMcf/d currently producing
 - Expect to double that by 2008 with 16 to 18 rigs
 - 5 to 30MM/d per well
- **C-Line Expansion - Eddy County, New Mexico**
 - 20 miles system expansion
 - 7 MMcf/d initially
- **Eunice Area Expansion Projects - Lea County, New Mexico**
 - 70 MMcf/d expansion
 - Expect to connect additional volumes from major active producers in 2006 and 2007
 - High margin, rich, sour, low pressure gas
- **Spraberry Trend Expansion - Reagan County, Texas**
 - 20 mile extension of system into Spraberry trend
 - Over 15 MMcf/d of 6.6 GPM gas
 - Infill drilling continues at a steady pace
- **Exxon Block 16 and Waha Area Project - Ward, Pecos and Reeves County, Texas**
 - 23 MMcf/d of existing production off competitors system
 - Facilities to be completed by August 1
- **Grey Ranch Plant High CO2 Expansion - Terrell and Pecos Counties, Texas**
 - Partner in plant is largest landowner and producer in region
 - Partner has requested plant expansion from 110MM/d to 180MM/d to accommodate growth
- **West Texas Barnett Shale - Culberson, Reeves, Pecos & Jeff Davis Counties, TX**
 - Over 2 MM acres have been leased in past 2 years in area with little infrastructure for gas or NGL's
 - Approximately 40 evaluation wells have been drilled, are drilling or are permitted
 - Chesapeake recently acquired 135,000 acres and active exploratory program with established commercial production in the area from Hallwood and Four Sevens (Alpine)
 - Additional players include, EOG, Encana, Petro-Hunt, Burlington, Quicksilver and Southwestern Energy



SUGS Index Map



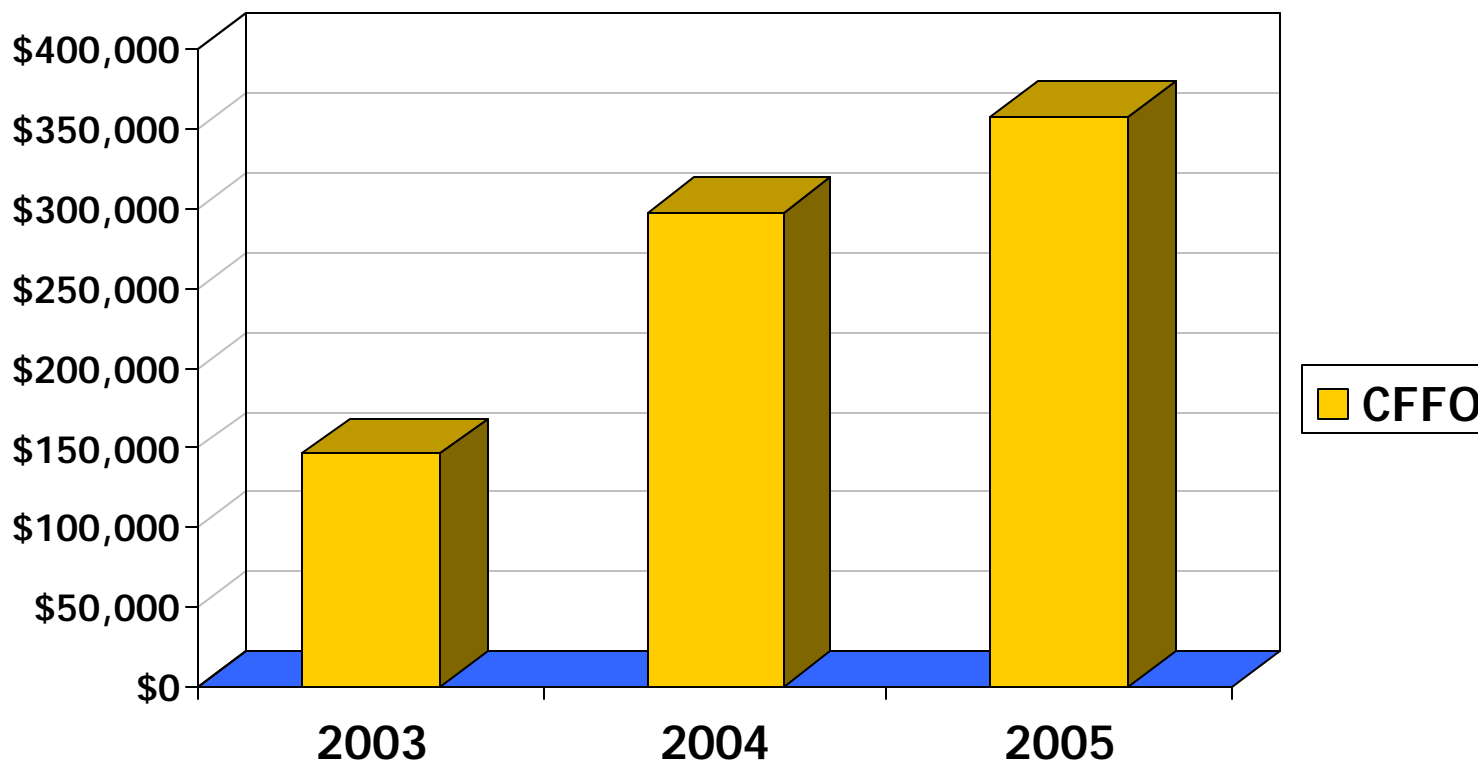


Financial Information



Strong Cash Generator

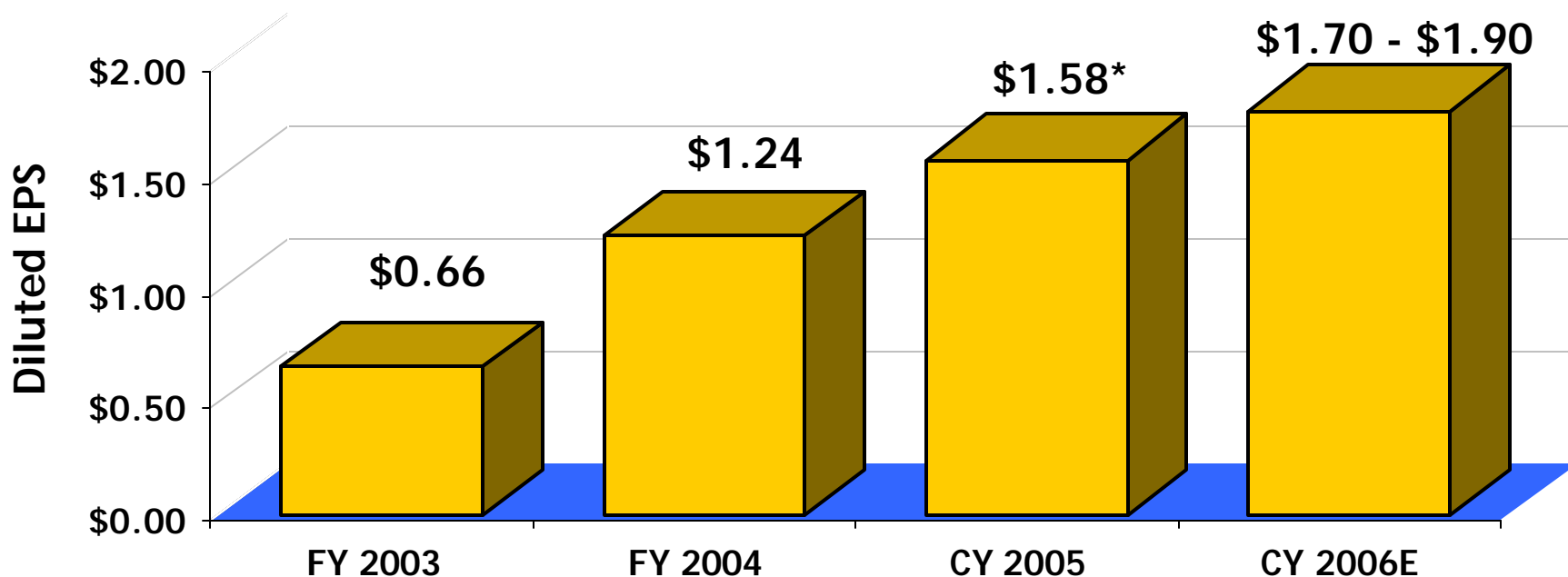
Cash Flow From Operations (Before Changes in Working Capital)



Note: Data shown represents fiscal year ended June 30, 2003 and calendar years ended December 31, 2004 and 2005.



EPS Growth Profile

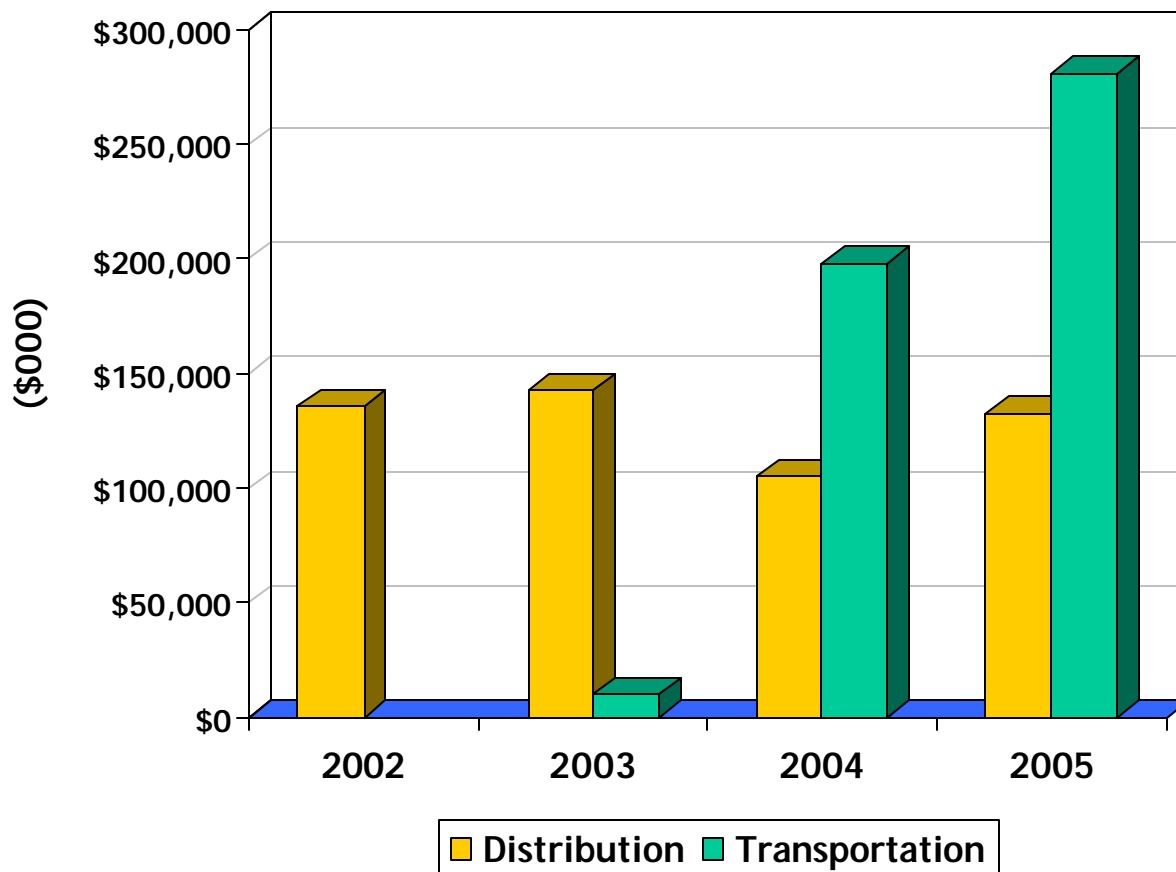


* - 2005 Diluted EPS excludes a non-cash charge of \$175 million related to the impairment of goodwill for the distribution properties expected to be sold in 2006. Reported EPS was \$.03 per share.

Note: Prior period EPS amounts have been adjusted to reflect the 5% stock dividend paid to shareholders on September 1, 2005. Previously issued 2006 GAAP guidance included contributions from SU Gas Services for ten months, closing of the LDC sales prior to the end of the third quarter, and excludes projected one-time charges related to the announced LDC sales.



Segment Operating Income

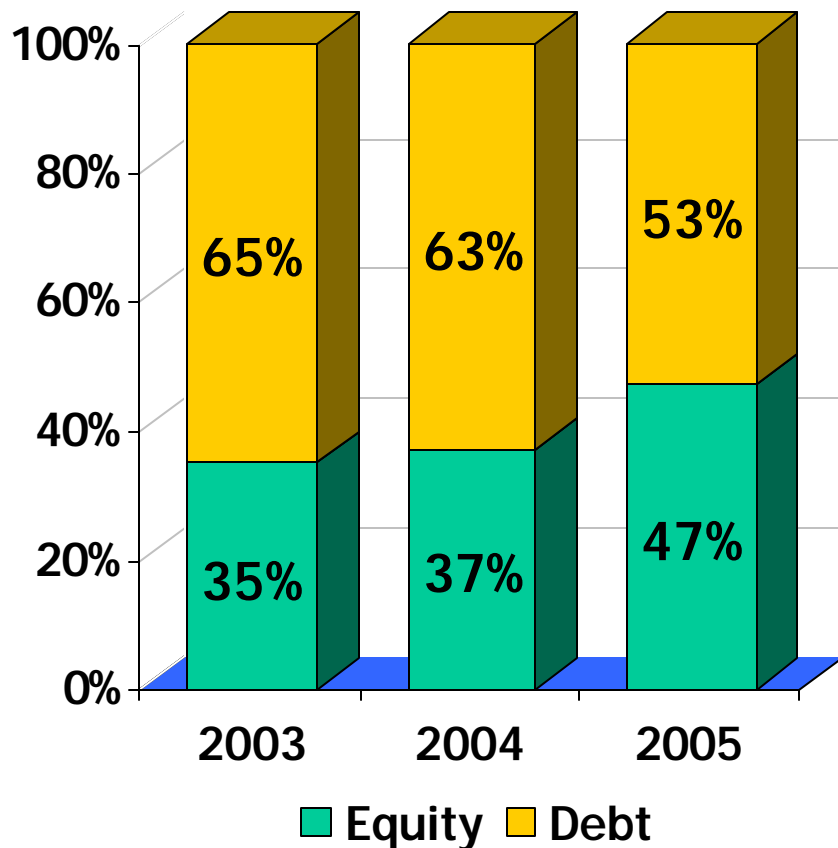


As we have changed our asset focus, we have demonstrated measured growth...

Note: Data shown represents fiscal years ended June 30, 2002 and 2003 and calendar years ended December 31, 2004 and 2005. 2005 data excludes a non-cash charge of \$175 million related to the impairment of goodwill for the Company's distribution businesses under contract to be sold in 2006. Reported operating income for the distribution segment was a loss of \$42.5 million.



Respect for the Balance Sheet



...and improved our balance sheet.

We have accomplished this with a combination of prudent financing and strong internal equity formation.

Note: Debt/Cap ratio as of December 31 for periods shown; provides 100% equity credit for preferred stock and convertible equity units.



1Q 2006 Segment Highlights (\$000s)

| Segment | EBIT | D&A | Adj. | Adj. EBITDA |
|------------------------|----------|----------|-----------------------|-------------|
| Transportation | \$86,801 | \$17,474 | \$25,818 ¹ | \$130,093 |
| Midstream ² | \$7,113 | \$5,552 | \$5,400 ³ | \$18,065 |
| Distribution | \$29,989 | \$7,583 | | \$37,572 |

1. Includes SUG's 50% of Transwestern's interest and depreciation of \$23 million plus SUG's 25% of Citrus' interest, taxes, and depreciation of \$57 million.
2. Midstream included in results from March 1 to March 31 only.
3. Includes \$6.6 million of cash settlement from March options less \$1.2 million non-cash income related to the time value portion of the hedge.



1Q EBIT Reconciliation (\$000s)

| | |
|---|----------|
| Transportation & Storage EBIT | \$86,801 |
| Gathering & Processing EBIT | \$7,113 |
| Distribution EBIT | \$29,989 |
| Corporate & Other | \$27,603 |
| Interest | \$42,221 |
| Federal & state income taxes | \$35,867 |
| Net earnings from continuing operations | \$73,418 |
| Net earnings from discontinued operations | \$24,529 |
| Preferred dividends | \$4,341 |
| Net earnings available to common shareholders | \$93,606 |



Questions