



# FARTHEST STAR SAKE

BREWERY  
AND TAPROOM  
CONCEPT

# CRAFT BREWERIES IN NEW ENGLAND

VERMONT: 65

CONNECTICUT: 85

MAINE: 127

NEW HAMPSHIRE: 78

MASSACHUSETTS: 156

RHODE ISLAND: 24



Sake breweries in New England:

**ZERO.**

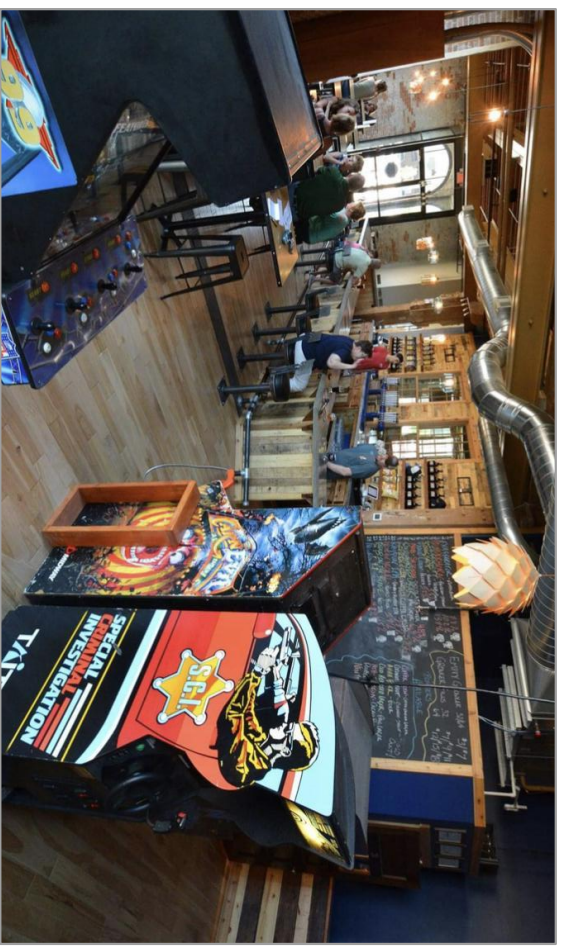
Let's change that.



# FARTHEST STAR SAKE



- ★ Fresh, local sake
- ★ Fun taproom with games and snacks
- ★ Opportunities for education to build understanding of delicious sake



# MEET TODD BELLOMY



- ★ Sake brewer with 10+ years of sake research in the US + Japan
- ★ Sole brewer for Dovetail Sake for 4 years
- ★ Experienced in brand creation + execution
- ★ Skilled at sales + sales support
- ★ Not afraid of hard work



# SAKE EDUCATOR



# COMMITTED TO SPREADING THE WORD

Todd Bellomy featured in Japanese press, Channel 5's Chronicle, and on the radio with Callie Crossley



食人気で

A photograph of Todd Bellomy in a brewery, wearing a green jacket, standing next to a large metal brewing vessel.

だっ来た米國  
私達は、本  
前のにきり  
になりまし  
ムもきご  
ムでは  
ム屋さん  
。ビルク  
もって変わ  
れどもに  
思のものが  
求ているの  
ムエが日本  
味料に風味を  
巨米酒を採

トウテイ社の日本  
原料米は米國で栽培さ  
山田錦を使っている  
かつて欧州のものだ  
イが北米、南米、中  
アムが賣つ地域で造  
よになり、世界中の  
ムで飲まれるものに  
した。日本酒が世界の  
ムで当たり前飲ま  
うになつても何の不思議  
いのです。  
のなつかしい懐疑的  
な意見がなくありますので  
秋の季節が始める  
やましのシーズン

トウテイ社のトッド・  
ベロミーさん。経営、醸造だけでなく地元スーパへの  
配達も1人でこなしている  
(米国ボストン郊外)

A photograph of a bottle of Gyorji Hicori beer.

# WE CAN MAKE SAKE THE NEXT CRAFT BEVERAGE

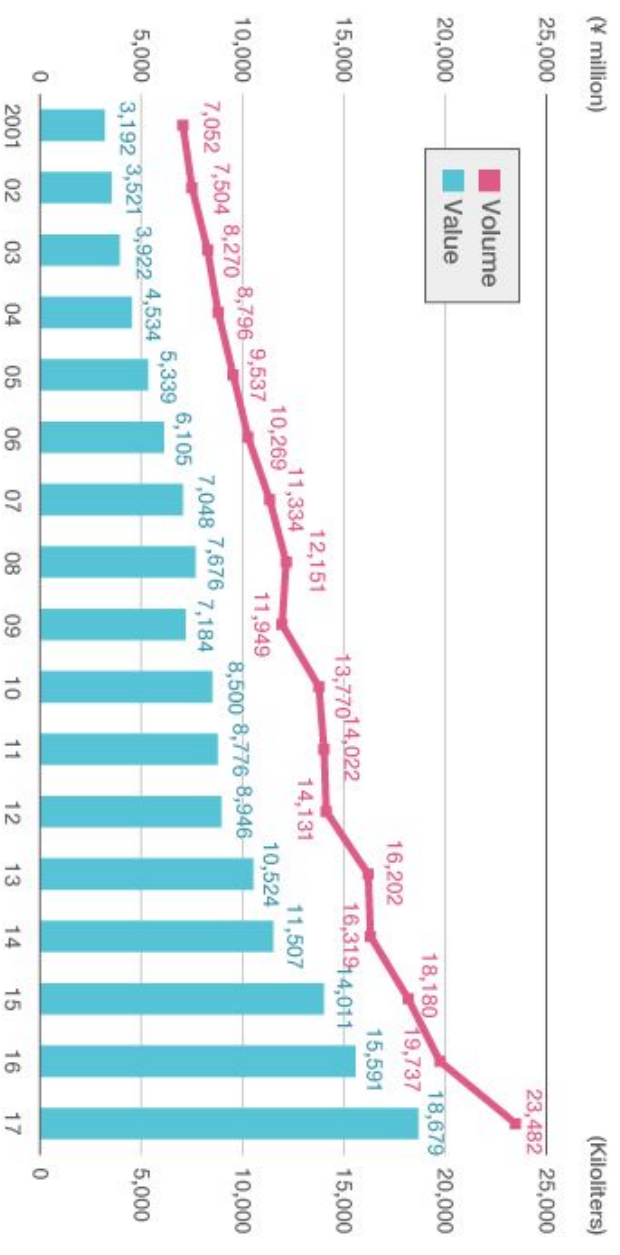
- ★ Complex & Delicious
- ★ Brewed in a Familiar Brewery Setting
- ★ 7000 Beer Breweries Crowd the US Market:  
yet only 18 Sake Breweries
- ★ Sake Draws Customers from Beer, Wine  
and Spirits Markets
- ★ Naturally Gluten-Free and Locally Made





# US = 1/3 JAPANESE SAKE EXPORTS

JAPANESE SAKE EXPORTS, 2001-2017



Source: Japan Ministry of Finance, Trade Statistics.

★2011-2016 US Sake  
Volume grew by 16%

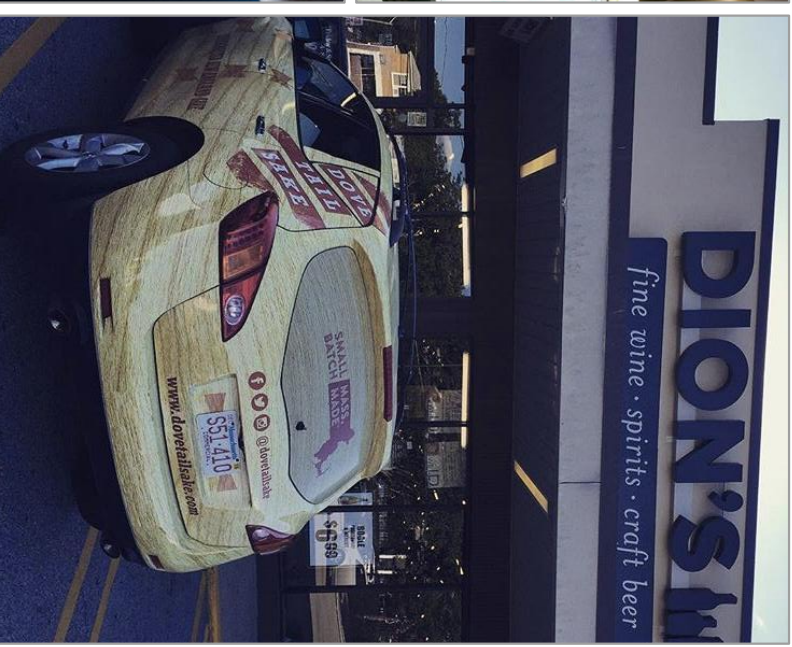
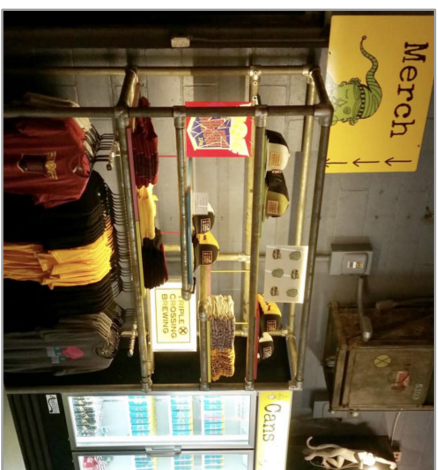
★Japanese Exports to the US  
Grew 300% over  
the past 5 Years

★1st East Coast Japanese  
Sake Brewery Set to Open  
in 2020



# A LOT OF REVENUE STREAMS

- ★ Self Distribution: Bottle & Keg
- ★ Taproom Draft Pours
- ★ Taproom Bottle Sales
- ★ Taproom Food & Fun
- ★ Merchandise
- ★ Events
- ★ Kasu (Sake Lees)



# MASSACHUSETTS DISTRIBUTION



**PHASE 1:** Metro Boston area through self-distribution

**PHASE 2 :** Reaching vacation destinations in Western Mass and on the Cape

- ★ < 15K restaurants in MA
- ★ +/- 1,600 Japanese & Chinese restaurants in MA
- ★ < 1800 liquor stores in MA
- ★ Single serving sake cup sales are up everywhere

# FUTURE OF FARTHEST STAR SAKE



Permanent  
Food Truck.

Expanded  
distribution.



Boston tasting  
experience.

Shochu distillery.

# TODD BELLOWY

todd@fartheststarsake.com

617-510-4611



Todd Bellomy is seeking investors to join him in building Farthest Star Sake brewery and taproom. Once established, it will be the only one of its kind in New England.

