

Fig.1 MYSTIC GOLDPROPERTY BC LOCATION MAP

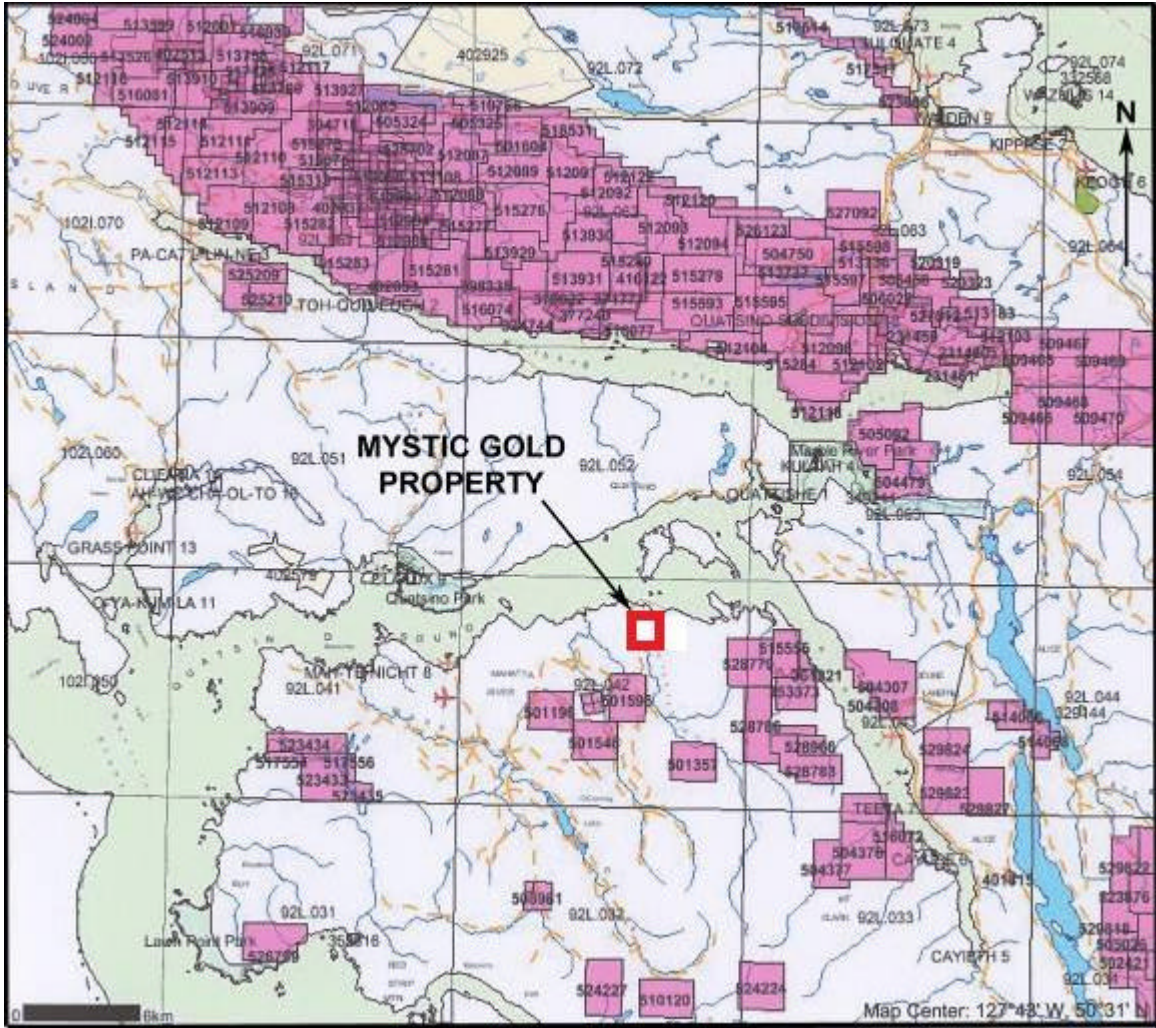


Fig. 2 MYSTIC GOLD REGIONAL LOCATION MAP

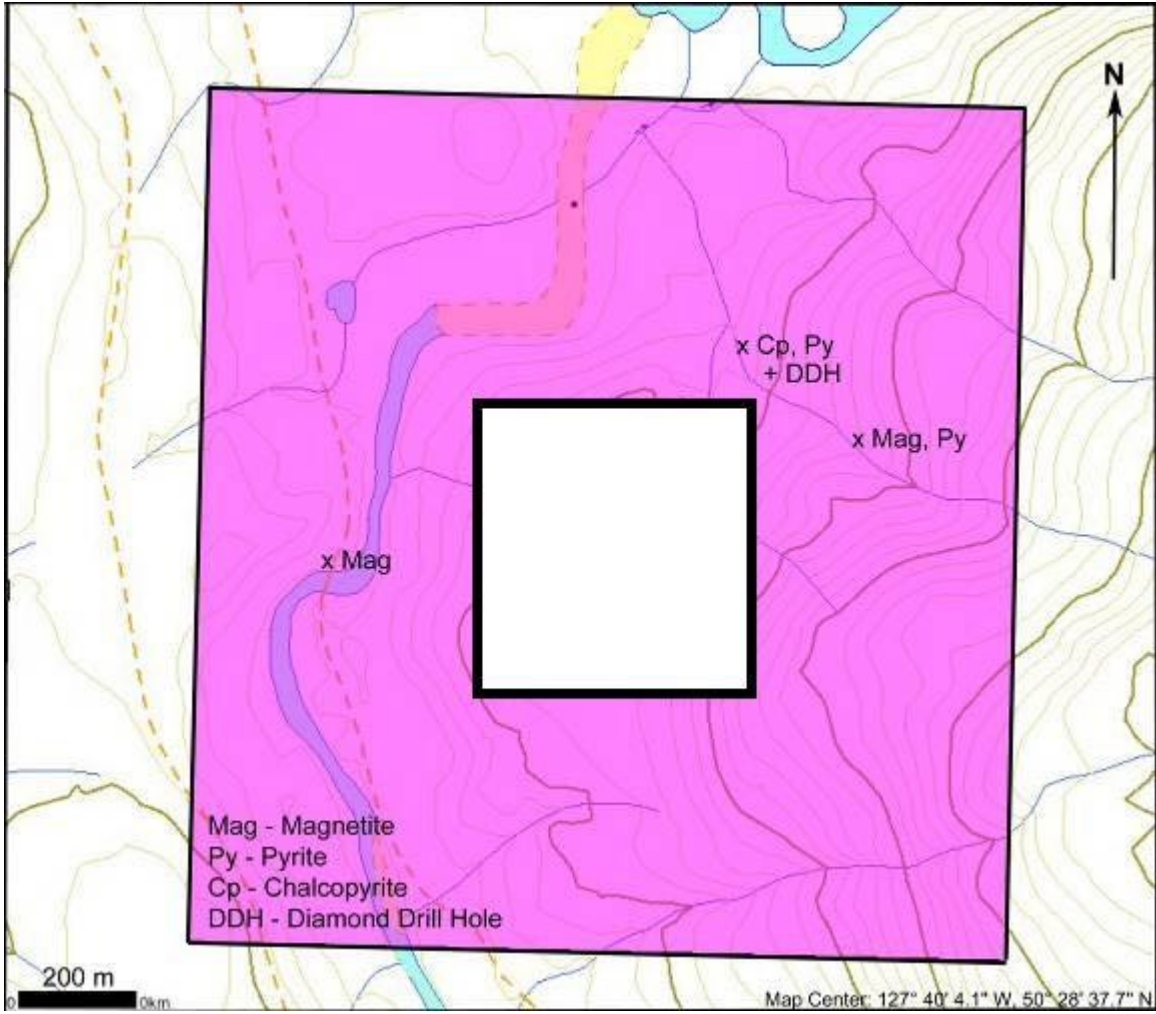


Fig. 3 MYSTIC GOLD PROPERTY MAP

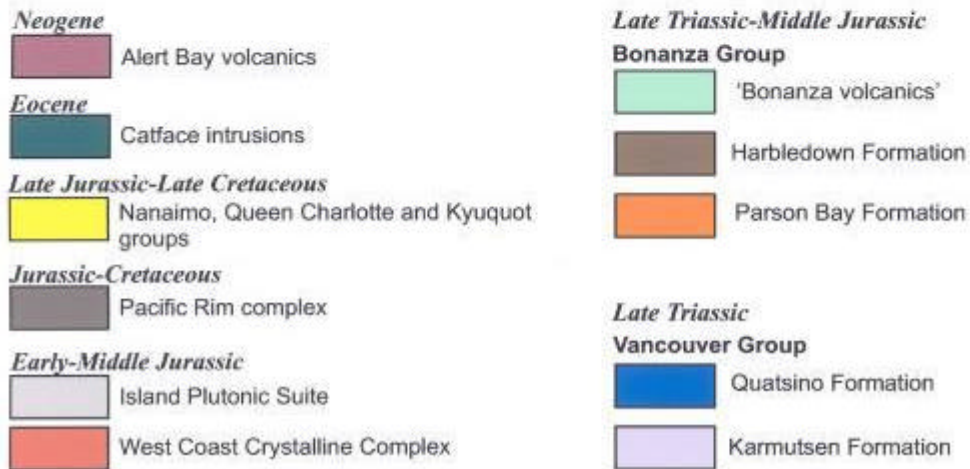
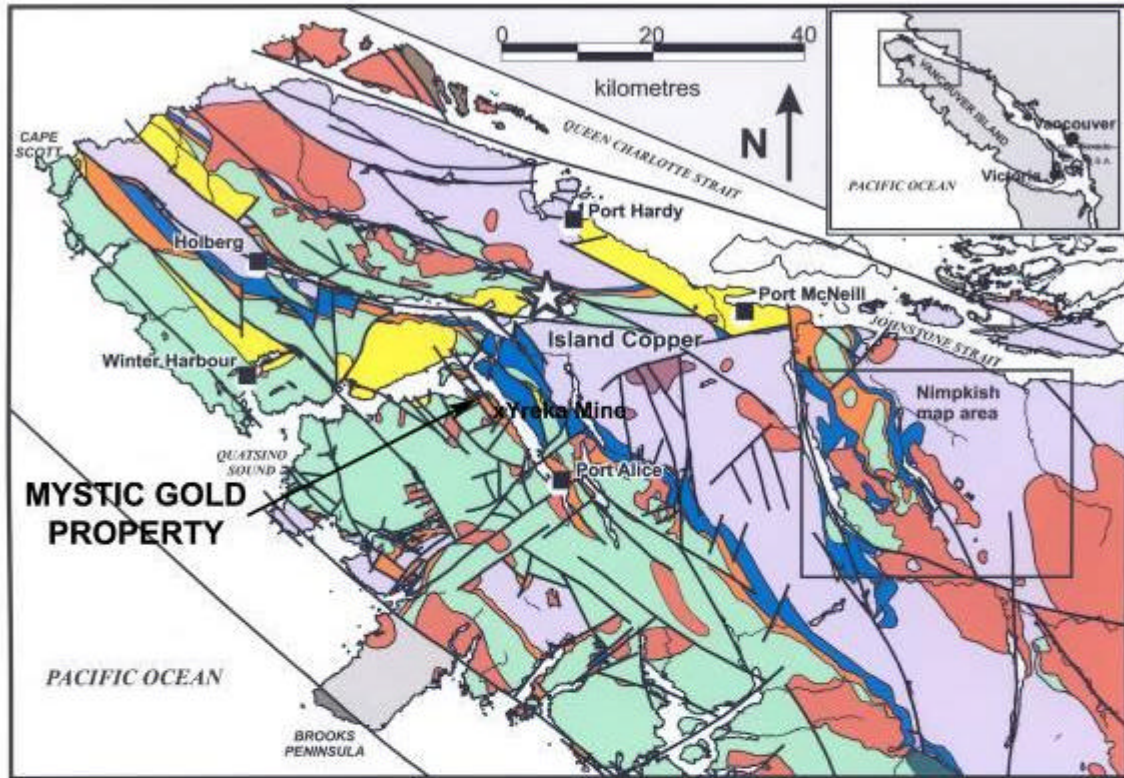


Figure 1. Regional geology of northern Vancouver Island (after Massey *et al.*, 2005), showing the location of the Nimpkish map area.

Fig. 4 MYSTIC GOLD PROPERTY REGIONAL GEOLOGY MAP

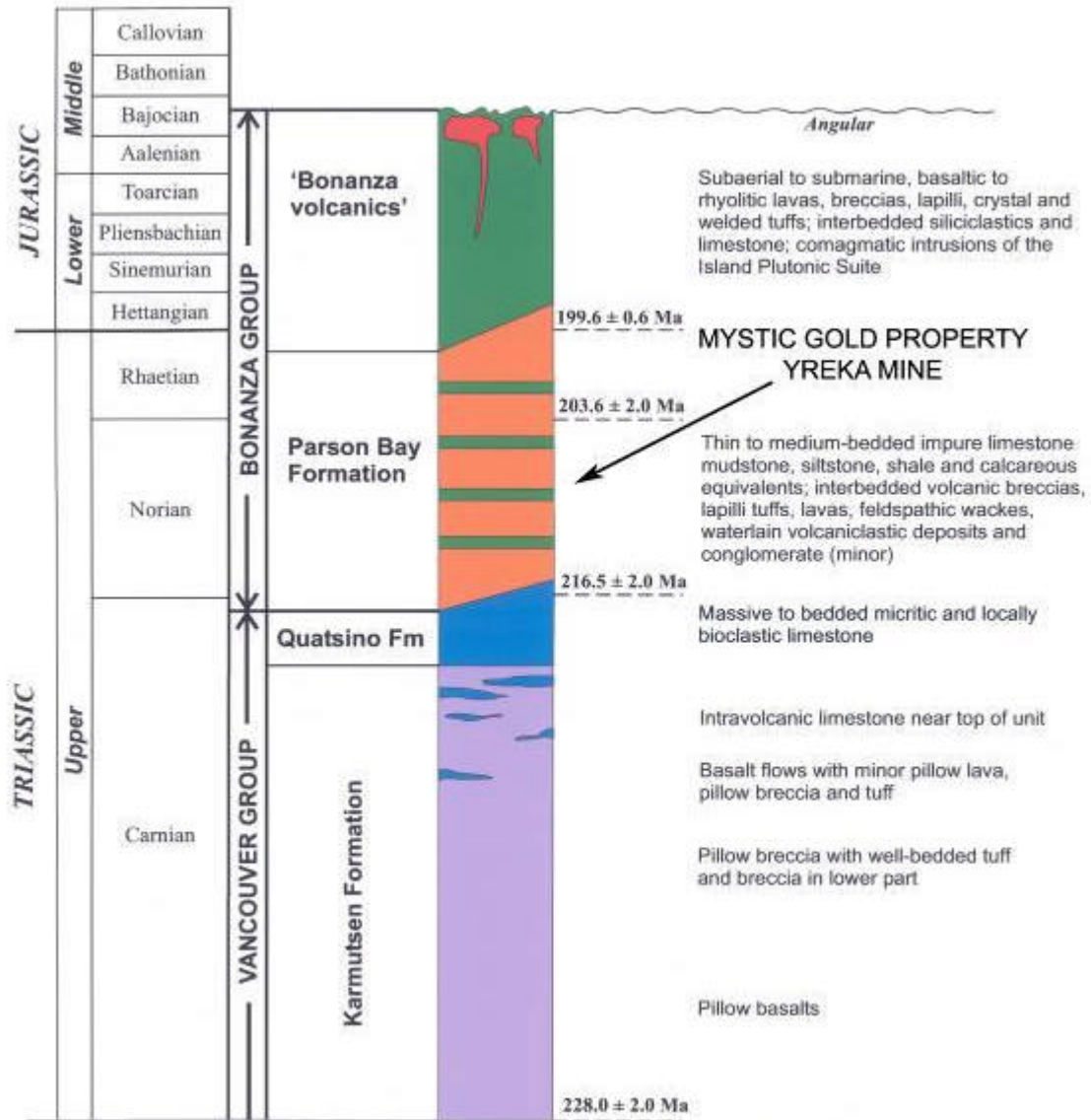


Figure 3. Revised stratigraphic nomenclature for Triassic–Jurassic lithostratigraphic units proposed in this study. The geological time scale is that of Gradstein et al. (2004).

Fig. 5 MYSTIC GOLD PROPERTY REGIONAL STRATIGRAPHY