

**June 30, 2008**

[www.myprovident.com](http://www.myprovident.com)

A decorative graphic consisting of overlapping colored squares (yellow, red, blue) and a black crosshair.

# Safe-Harbor Statement

---

This presentation contains statements that the Corporation believes are “forward-looking statements.” These statements relate to the Corporation’s financial condition, results of operations, plans, objectives, future performance or business. You should not place undue reliance on these statements, as they are subject to risks and uncertainties. When considering these forward-looking statements, you should keep in mind these risks and uncertainties, as well as any cautionary statements the Corporation may make. Moreover, you should treat these statements as speaking only as of the date they are made and based only on information then actually known to the Corporation. There are a number of important factors that could cause future results to differ materially from historical performance and these forward-looking statements. Factors which could cause actual results to differ materially include, but are not limited to, the credit risks of lending activities, including changes in the level and trend of loan delinquencies and write-offs; changes in general economic conditions, either nationally or in our market areas; changes in the levels of general interest rates, deposit interest rates, our net interest margin and funding sources; fluctuations in the demand for loans, the number of unsold homes and other properties and fluctuations in real estate values in our market areas; results of examinations of us by the Office of Thrift Supervision and our bank subsidiary by the Federal Deposit Insurance Corporation, the Office of Thrift Supervision or other regulatory authorities, including the possibility that any such regulatory authority may, among other things, require us to increase our reserve for loan losses or to write-down assets; our ability to control operating costs and expenses; our ability to implement our branch expansion strategy; our ability to successfully integrate any assets, liabilities, customers, systems, and management personnel we have acquired or may in the future acquire into our operations and our ability to realize related revenue synergies and cost savings within expected time frames and any goodwill charges related thereto; our ability to manage loan delinquency rates; our ability to retain key members of our senior management team; costs and effects of litigation, including settlements and judgments; increased competitive pressures among financial services companies; changes in consumer spending, borrowing and savings habits; legislative or regulatory changes that adversely affect our business; adverse changes in the securities markets; inability of key third-party providers to perform their obligations to us; changes in accounting policies and practices, as may be adopted by the financial institution regulatory agencies or the Financial Accounting Standards Board; war or terrorist activities; other economic, competitive, governmental, regulatory, and technological factors affecting our operations, pricing, products and services and other risks detailed in the Corporation’s reports filed with the Securities and Exchange Commission, including its Annual Report on Form 10-K for the fiscal year ended June 30, 2007, as amended.

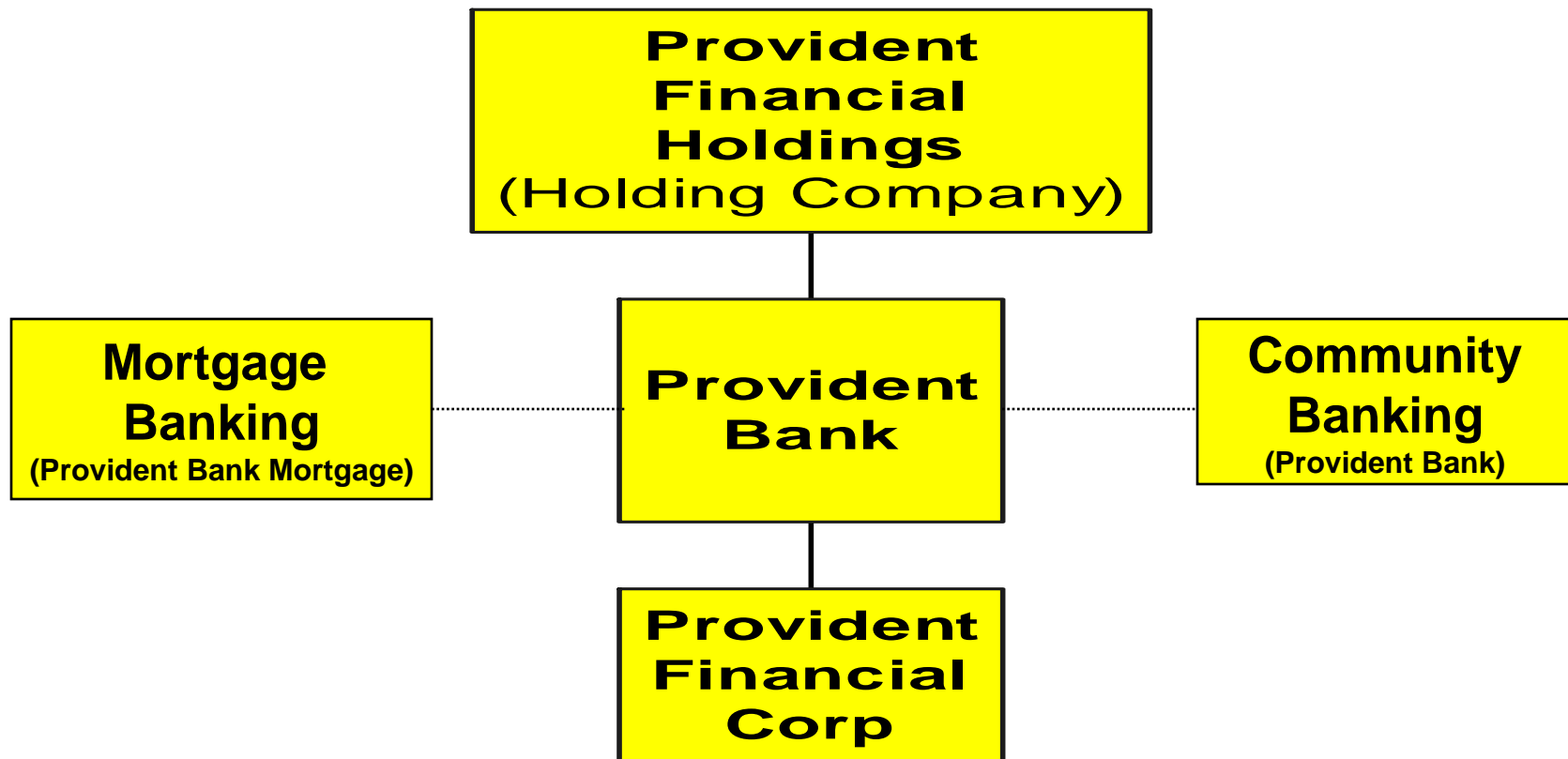


## Market Highlights

<b>Provident Financial Holdings, Inc.</b>	
Nasdaq GS:	PROV
Share price:	\$9.44
52-week range:	\$9.44 - \$25.17
Shares outstanding	6,207,719 shares
Market cap:	\$58.6 million
P/E (ttm):	39.33
EPS (ttm):	\$0.24
Annual div & yield:	\$0.40 (4.24%)
Div distribution date:	13-Jun-08
Div record date:	19-May-08
As of June 30, 2008	



# Organizational Chart





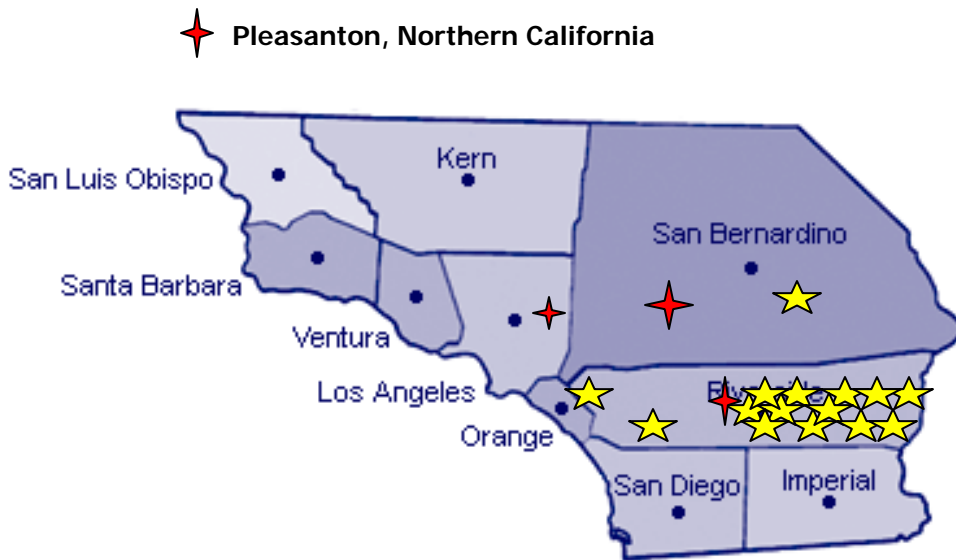
## PROV Overview

---

### **Regional Banking Services Company Based in the Inland Empire Area of Southern California**

- Expanding customer base and market
- Strong mortgage operations
- Largest independent community bank headquartered in Riverside County, California
- Fifth largest deposit market share in the Riverside-San Bernardino RMA

# Provident Locations



## Provident Bank

### Full Service Offices:

- ★ Beaumont (Spring 2009)
- ★ Blythe
- ★ Canyon Crest, Riverside
- ★ Corona
- ★ Corporate Office, Riverside
- ★ Downtown, Riverside
- ★ Hemet
- ★ La Sierra, Riverside
- ★ Moreno Valley - Heacock St.
- ★ Moreno Valley - Iris Ave. (Fall 2008)
- ★ Orangecrest, Riverside
- ★ Rancho Mirage
- ★ Redlands
- ★ Sun City
- ★ Temecula

## Provident Bank Mortgage

### Wholesale Offices:

- ◆ Pleasanton
- ◆ Rancho Cucamonga

### Retail Offices:

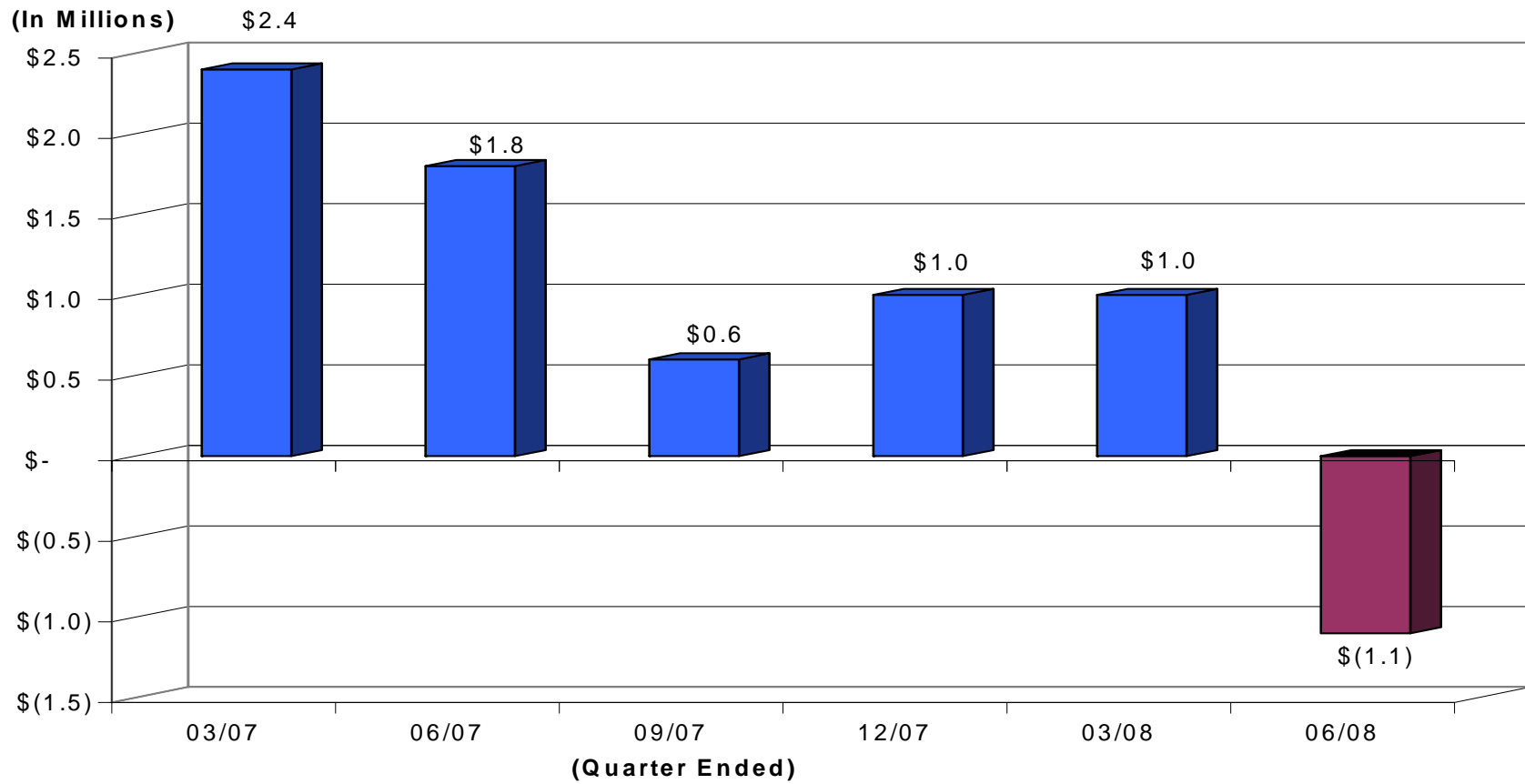
- ◆ Glendora
- ◆ Riverside

# PROV Highlights

<b>Financial Position:</b>	<b>As of 06/30/2008</b>	<b>As of 03/31/2007</b>
Total Assets .....	\$ 1.63 Billion	\$ 1.77 billion
Loans Held for Investment .....	\$ 1.37 Billion	\$ 1.39 billion
Deposits .....	\$ 1.01 Billion	\$ 982.6 million
Equity .....	\$ 124.6 Million	\$ 131.5 million
Tangible Equity .....	\$ 124.6 Million	\$ 131.5 million

<b>Financial Results:</b>	<b>Quarter Ended 06/30/2008</b>	<b>Quarter Ended 03/31/2007</b>
Net (Loss) Income .....	\$ (1.1) million	\$ 2.4 million
Return on Average Equity .....	-3.62%	7.07%
Return on Average Assets .....	-0.28%	0.54%
Net Interest Margin .....	2.93%	2.49%
Efficiency Ratio .....	63.41%	61.11%
Total Loan Originations .....	\$ 144.0 Million	\$ 386.0 million
Provident Bank .....	\$ 9.0 Million	\$ 54.7 million
Provident Bank Mortgage ....	\$ 135.0 Million	\$ 331.3 million

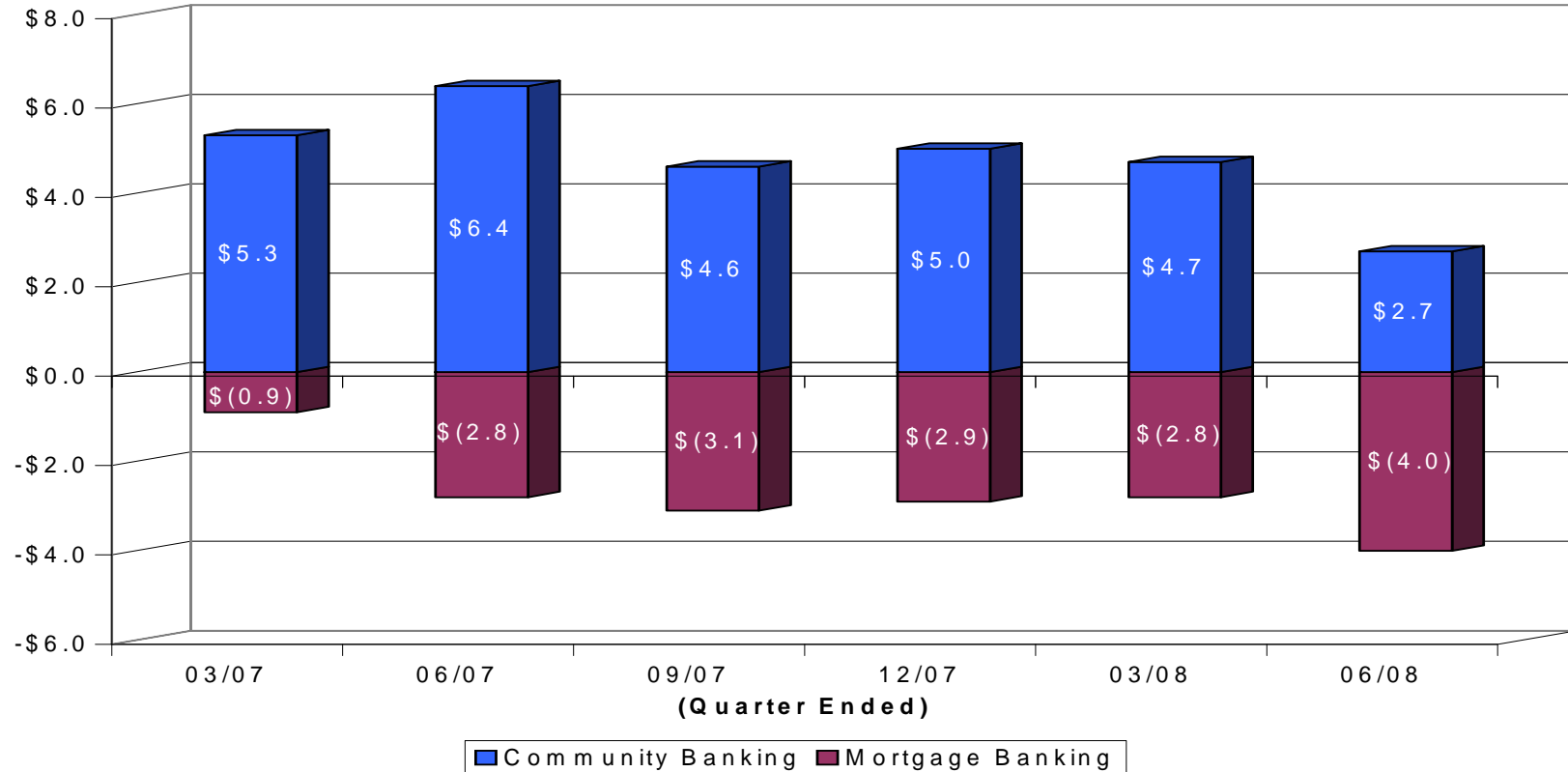
# Quarterly Net Income



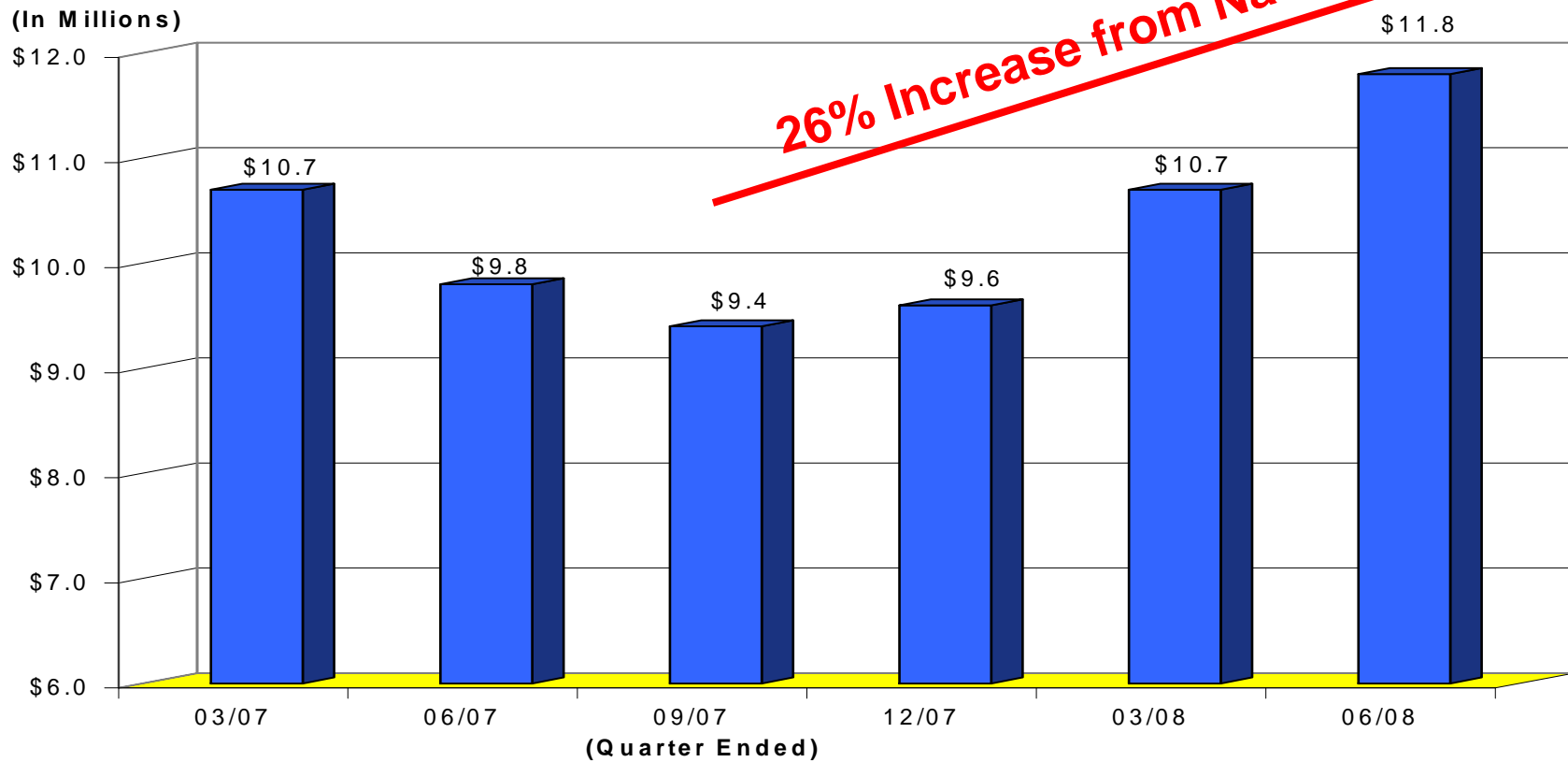


## Pre-Tax Income - Operating Segments

(In Millions)

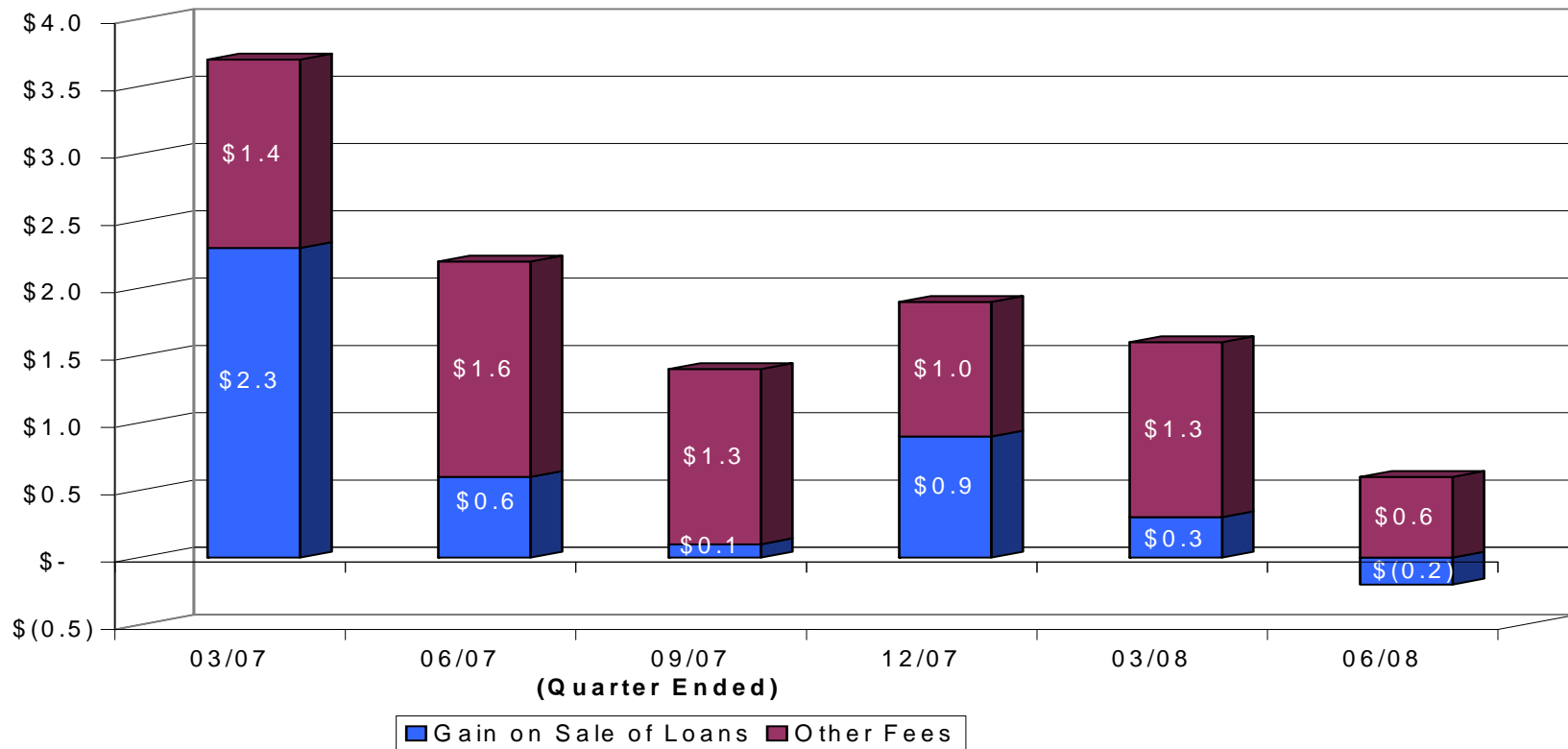


## Quarterly Net Interest Income

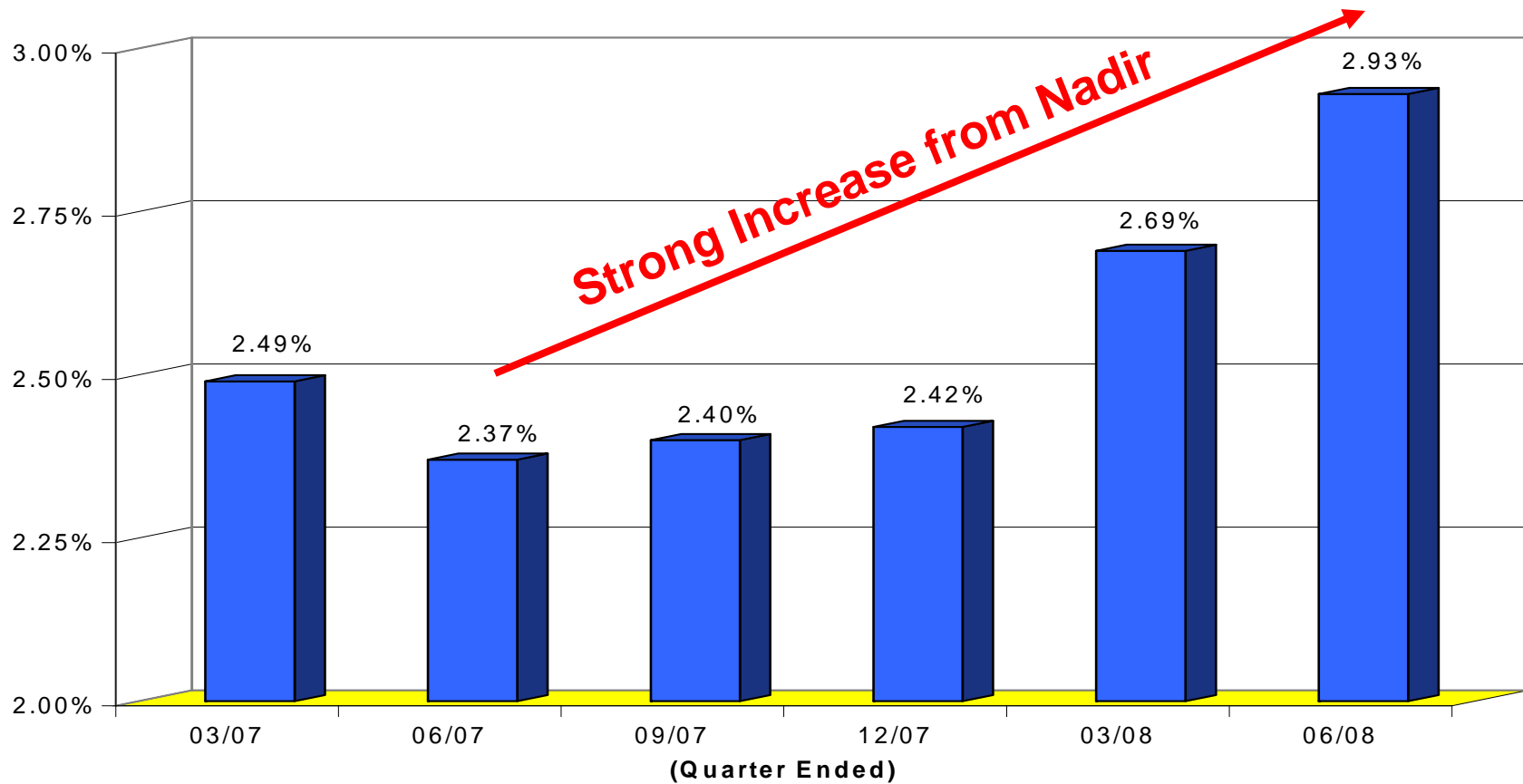


# Non-Interest Income

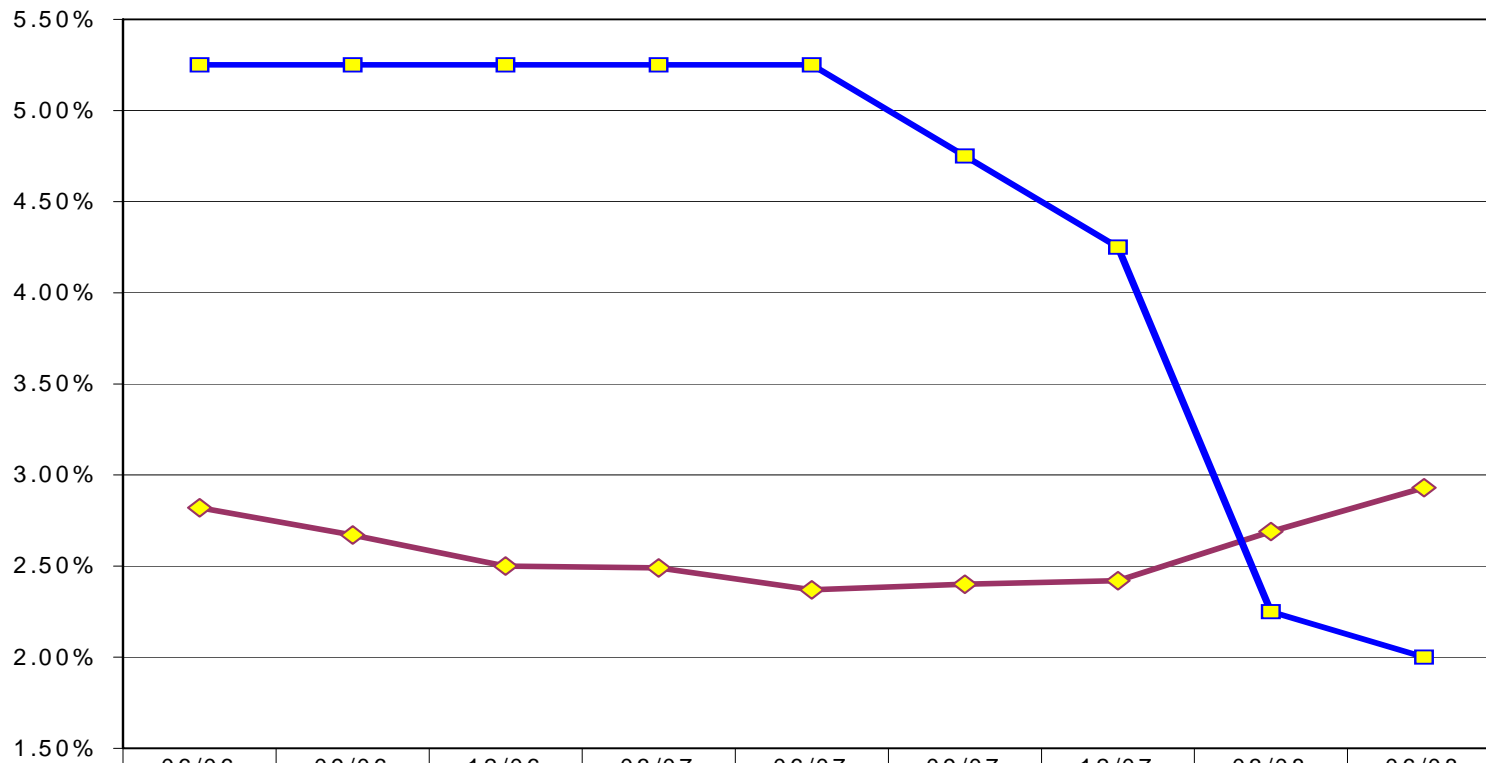
(In Millions)



# Net Interest Margin

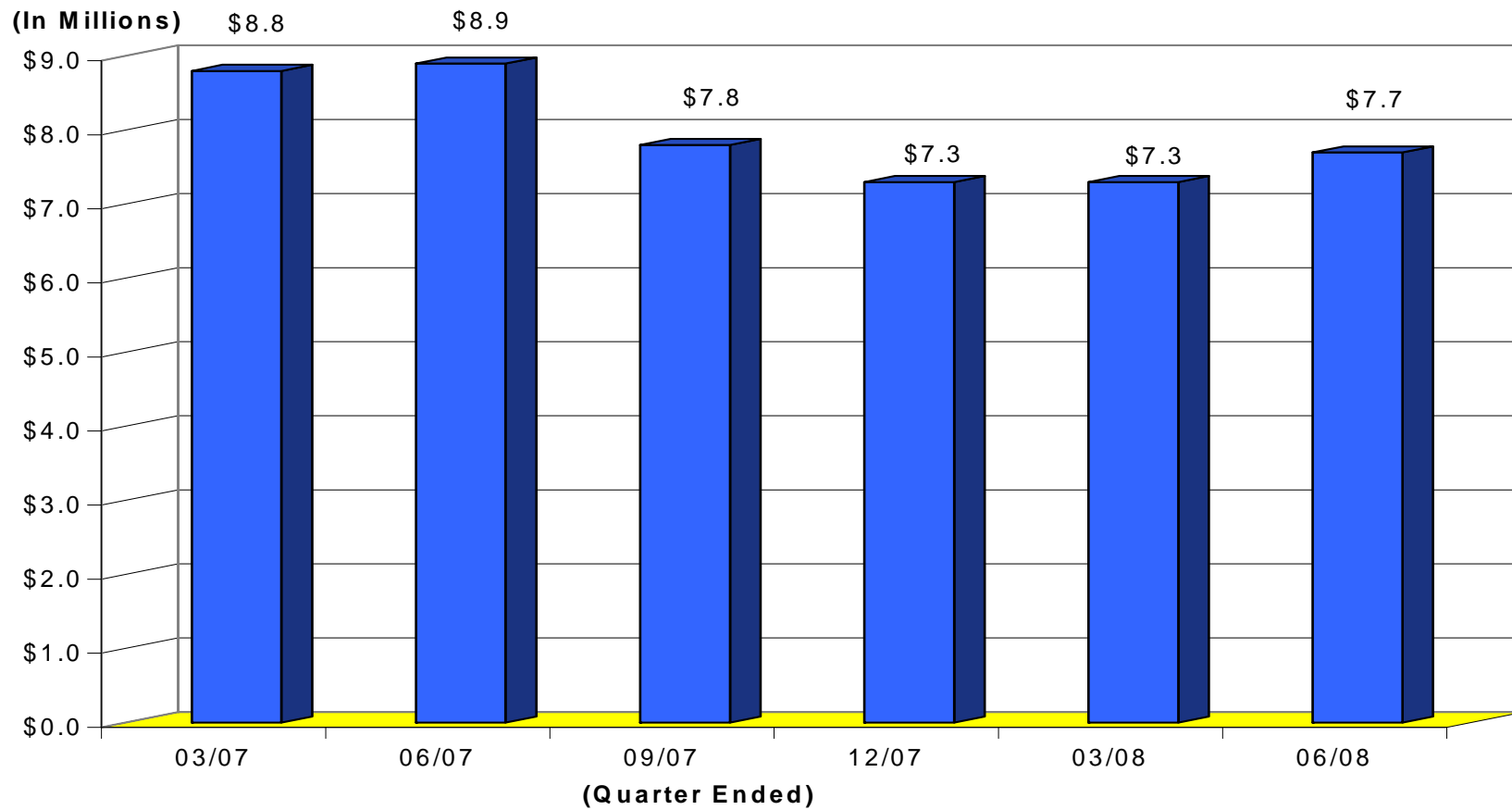


## Net Interest Margin vs. Fed Funds

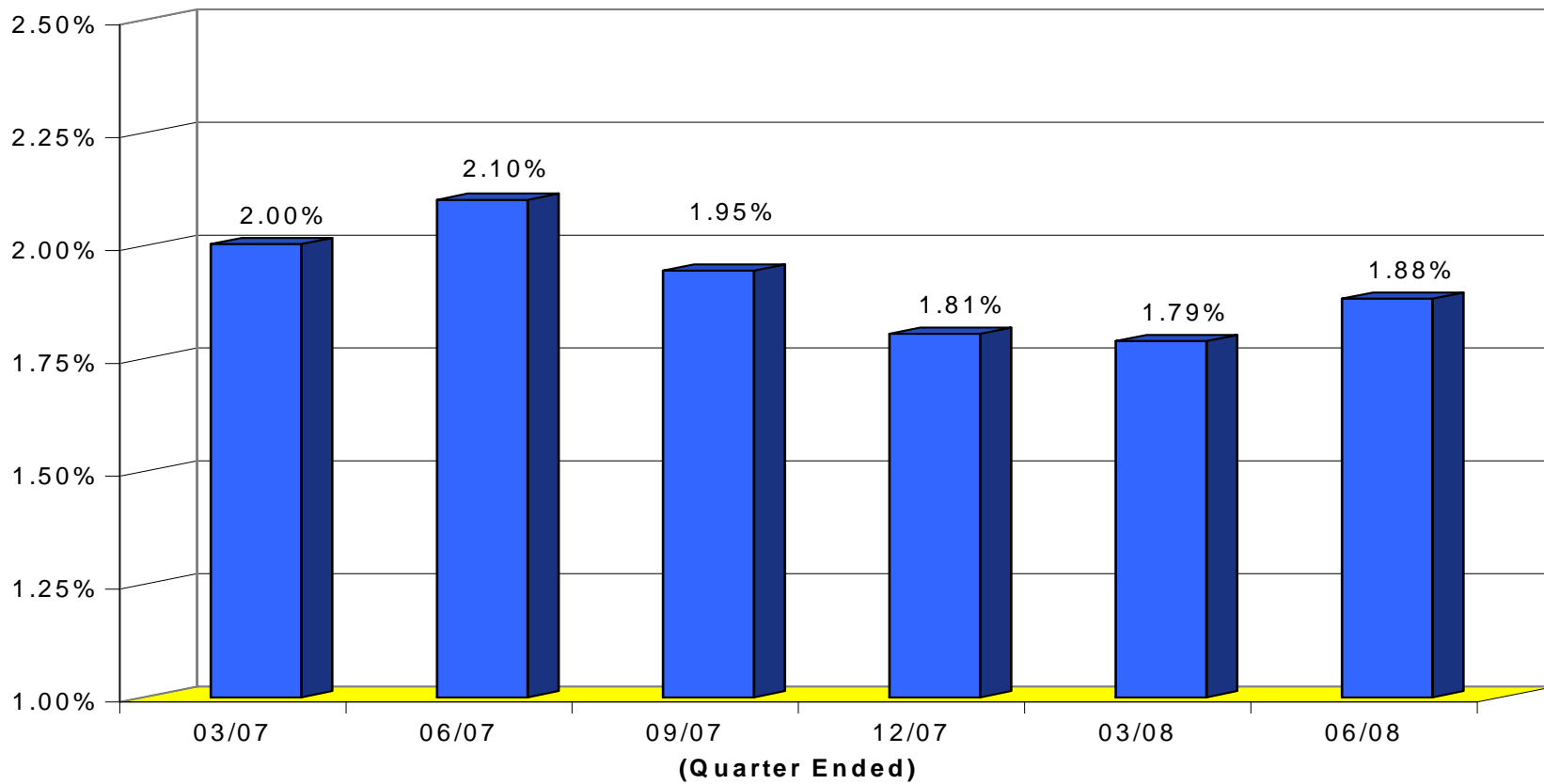


◆ NIM (%)	2.82%	2.67%	2.50%	2.49%	2.37%	2.40%	2.42%	2.69%	2.93%
■ Fed Funds (%)	5.25%	5.25%	5.25%	5.25%	5.25%	4.75%	4.25%	2.25%	2.00%

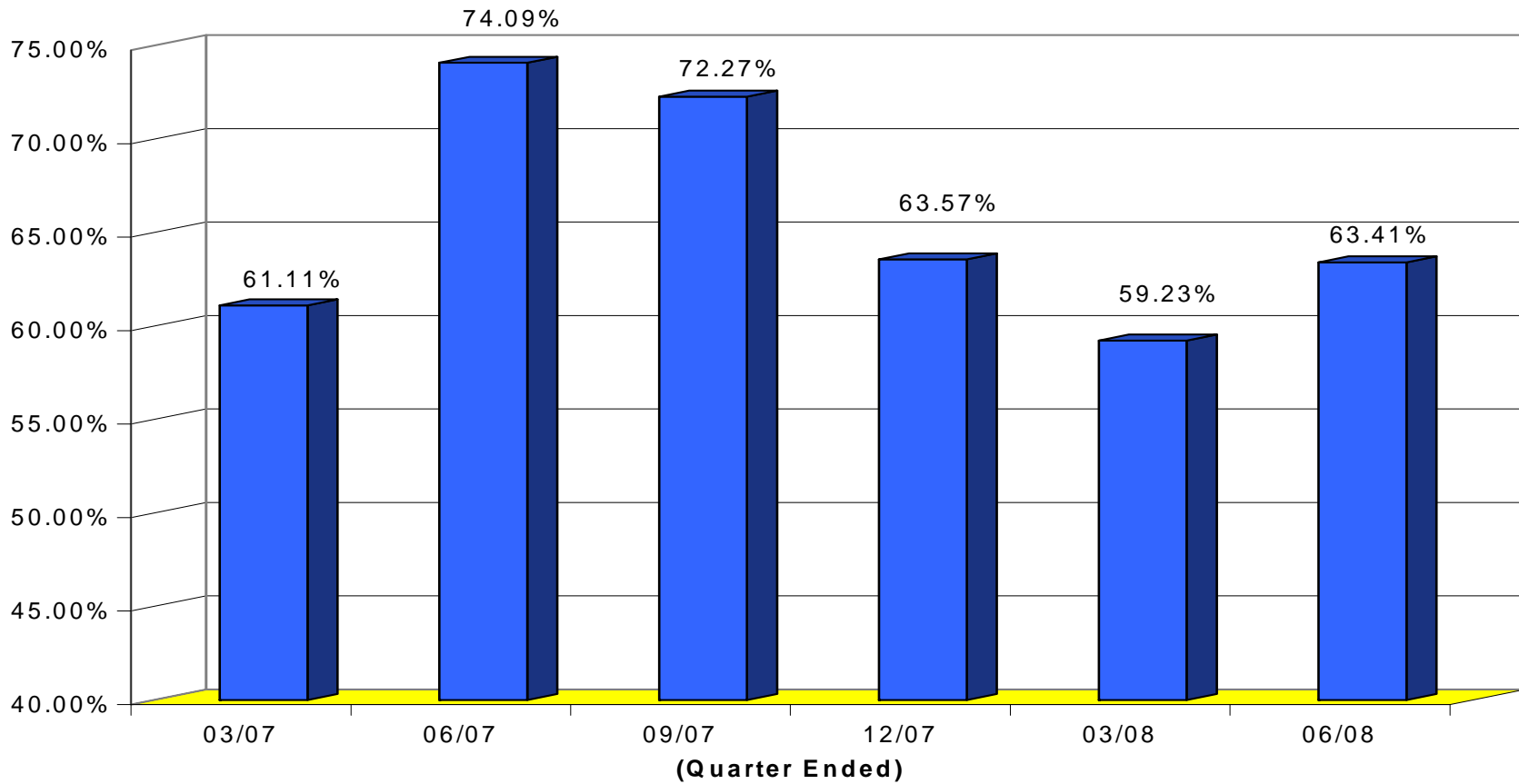
# Operating Expenses



## G&A to Average Assets

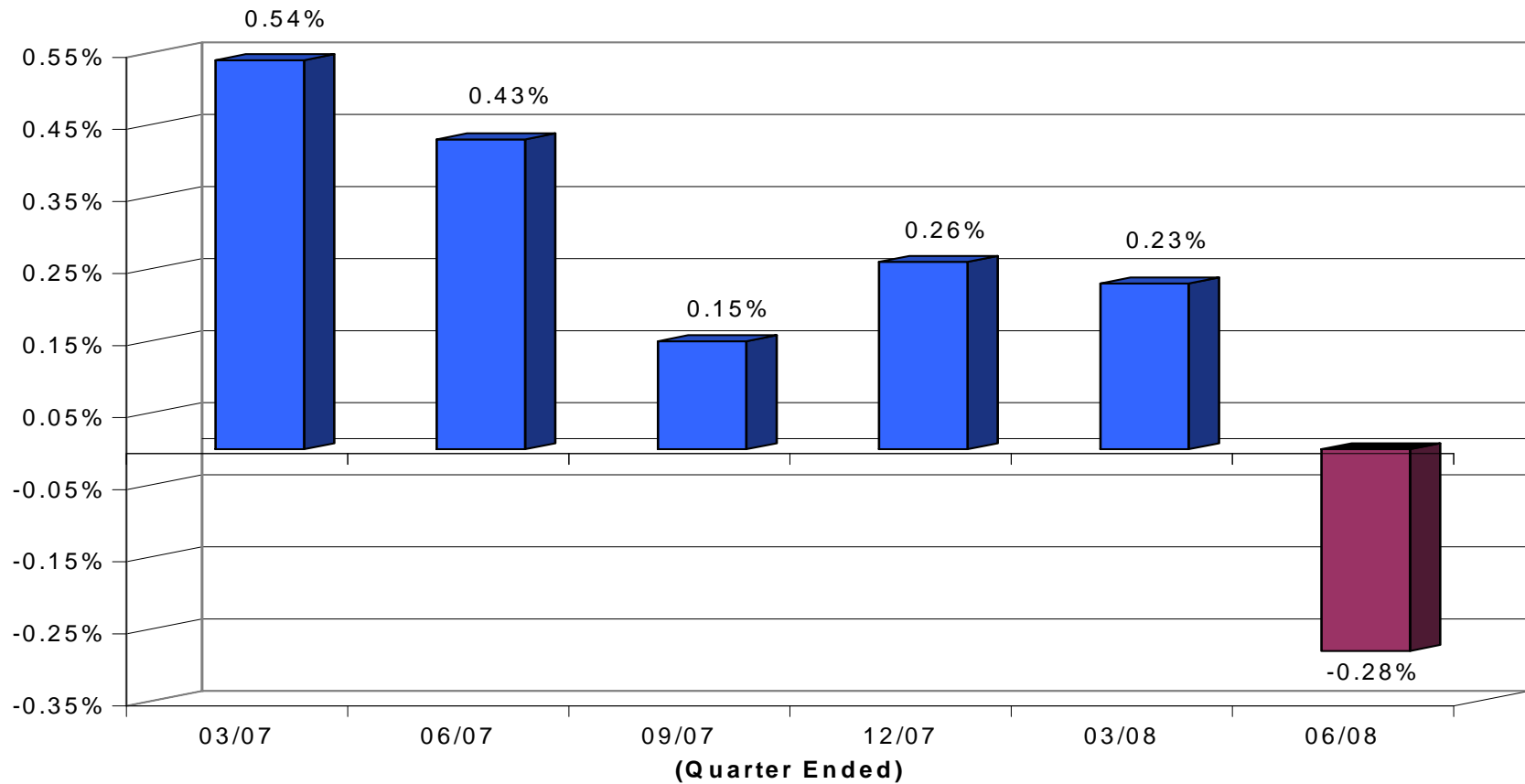


# Efficiency Ratio

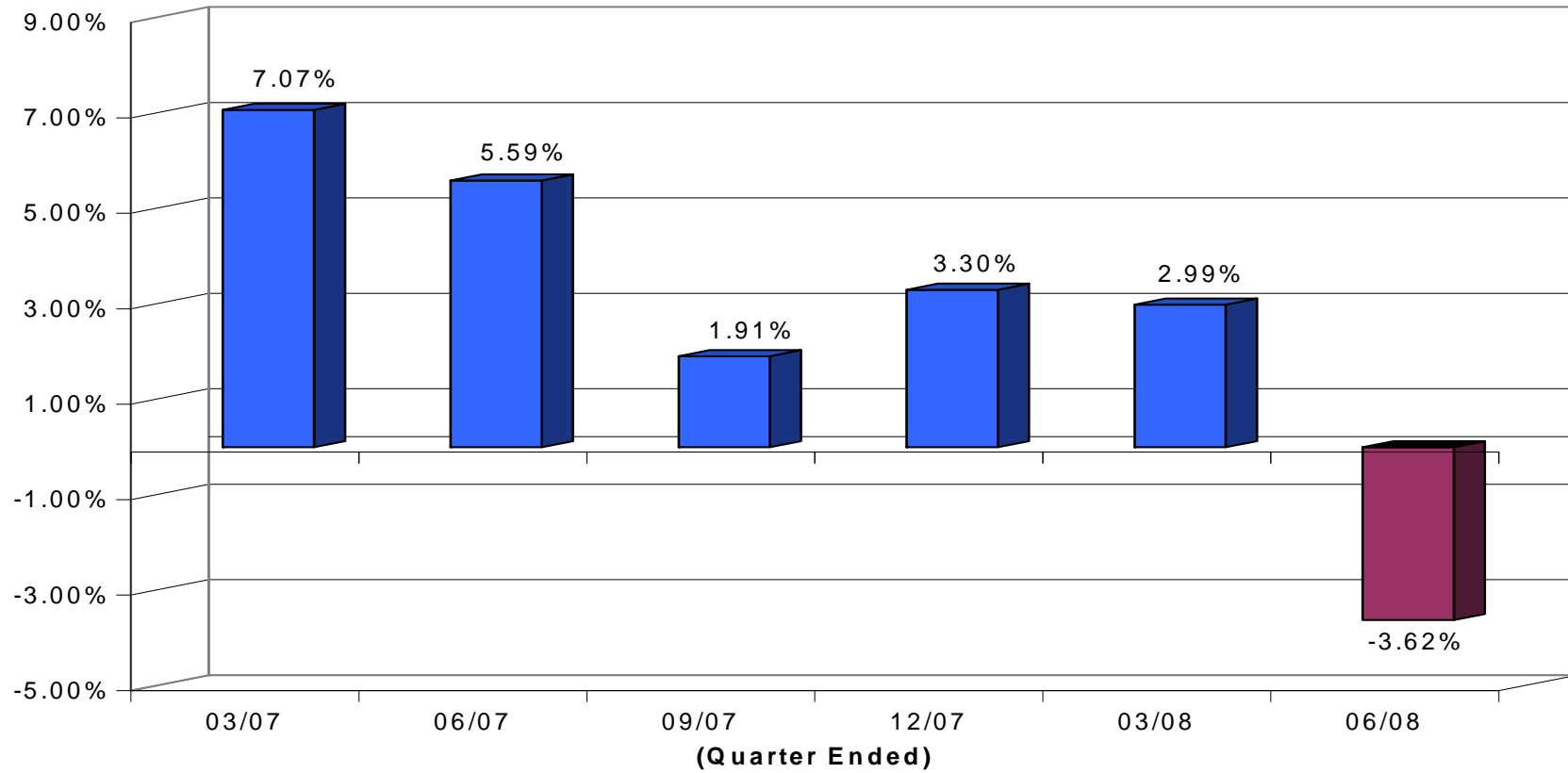




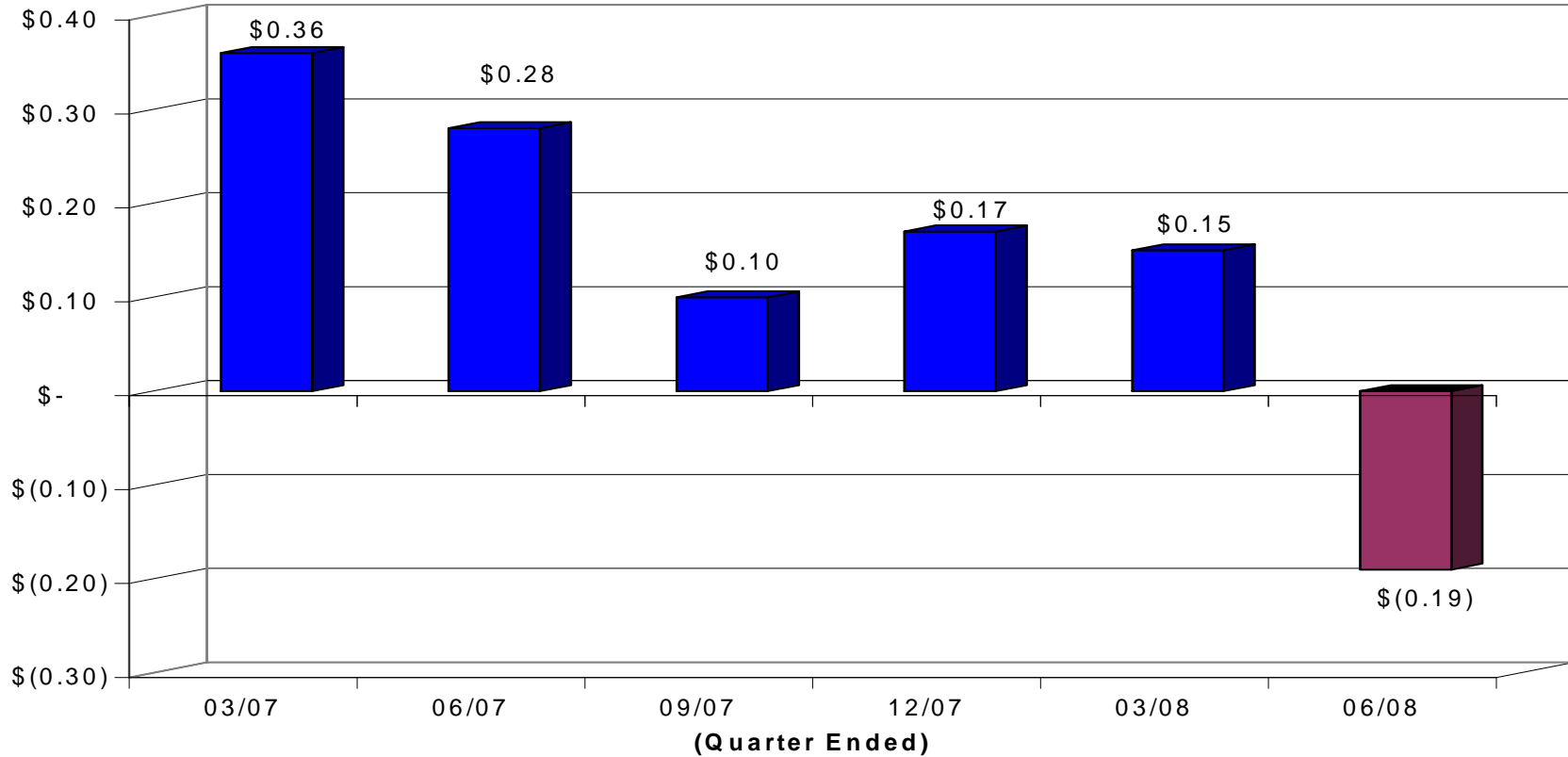
## Return on Average Assets



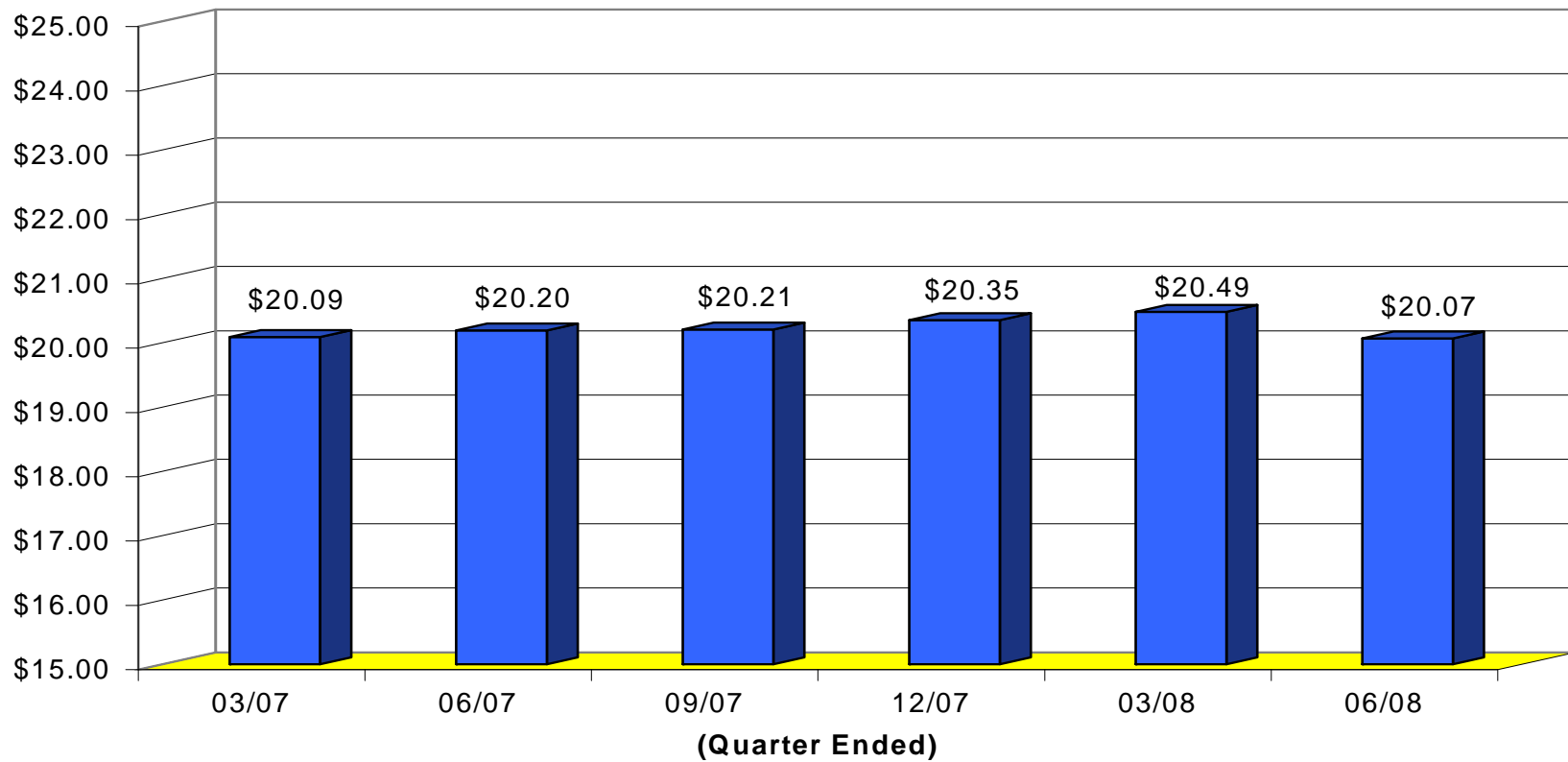
## Return on Average Equity

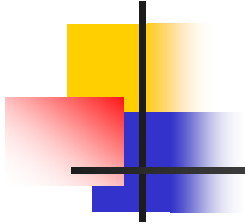


## Diluted Earnings per Share



## Book Value per Share



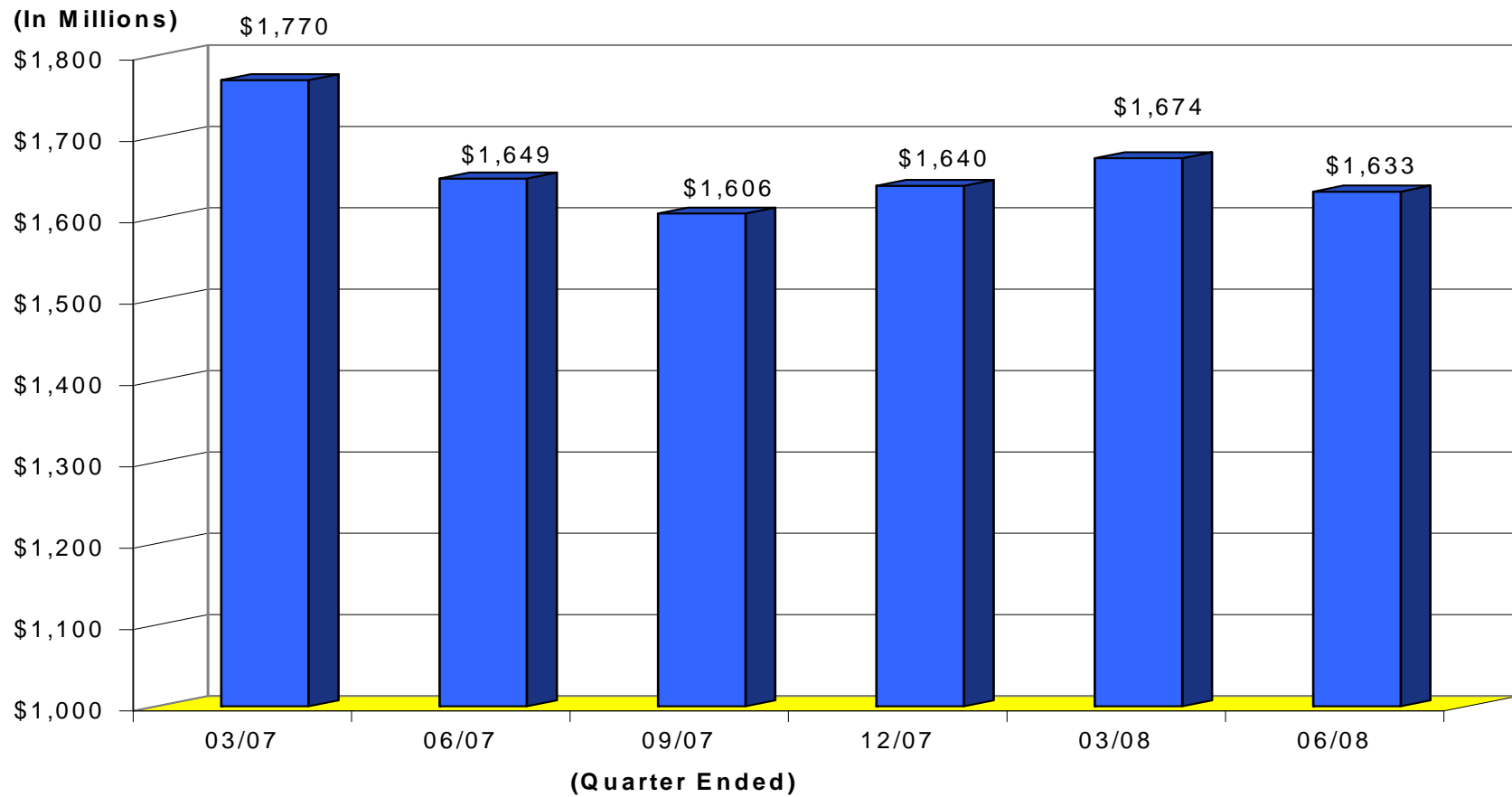


# Community Banking

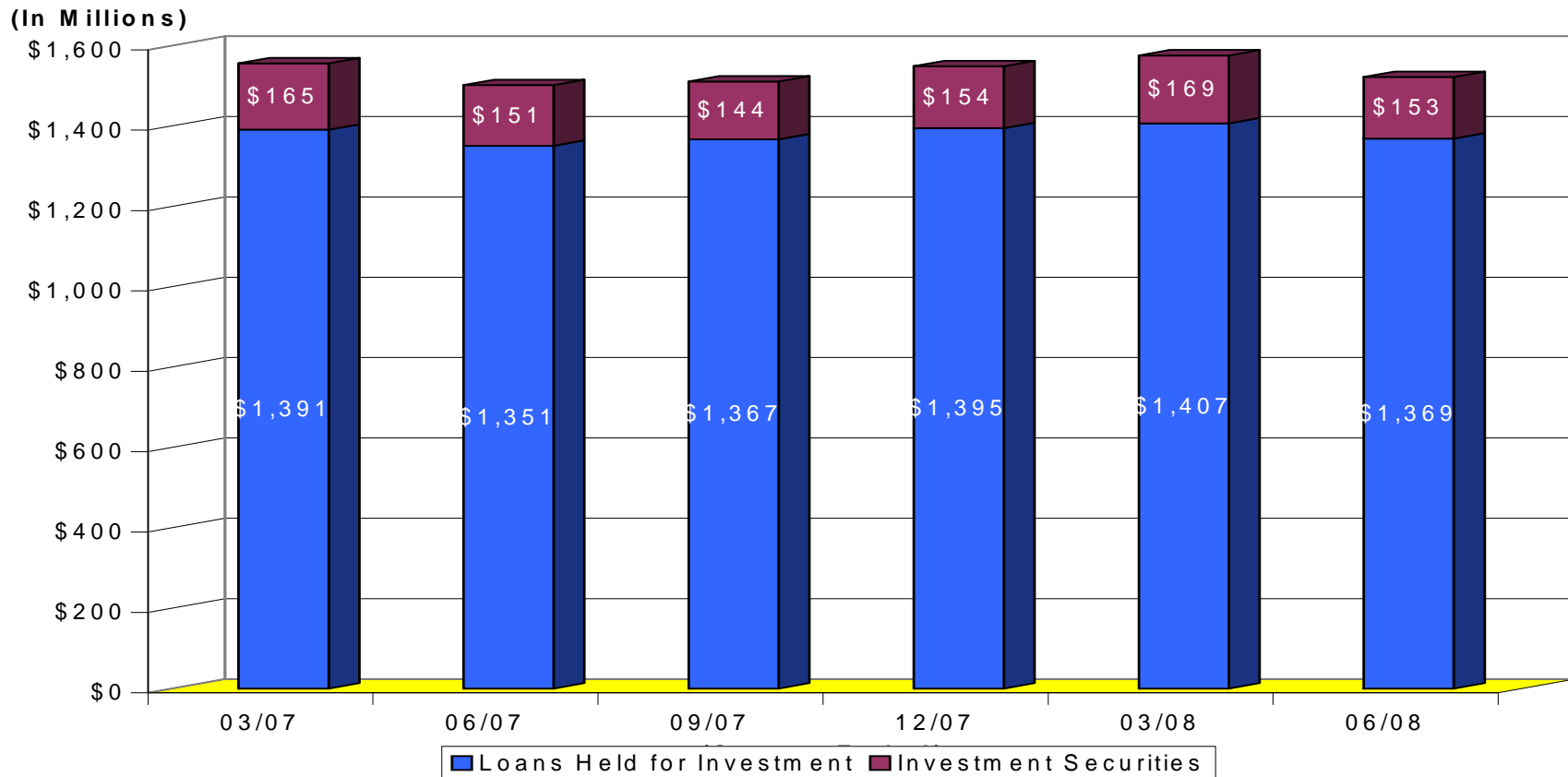


More for you everyday.

# Total Assets

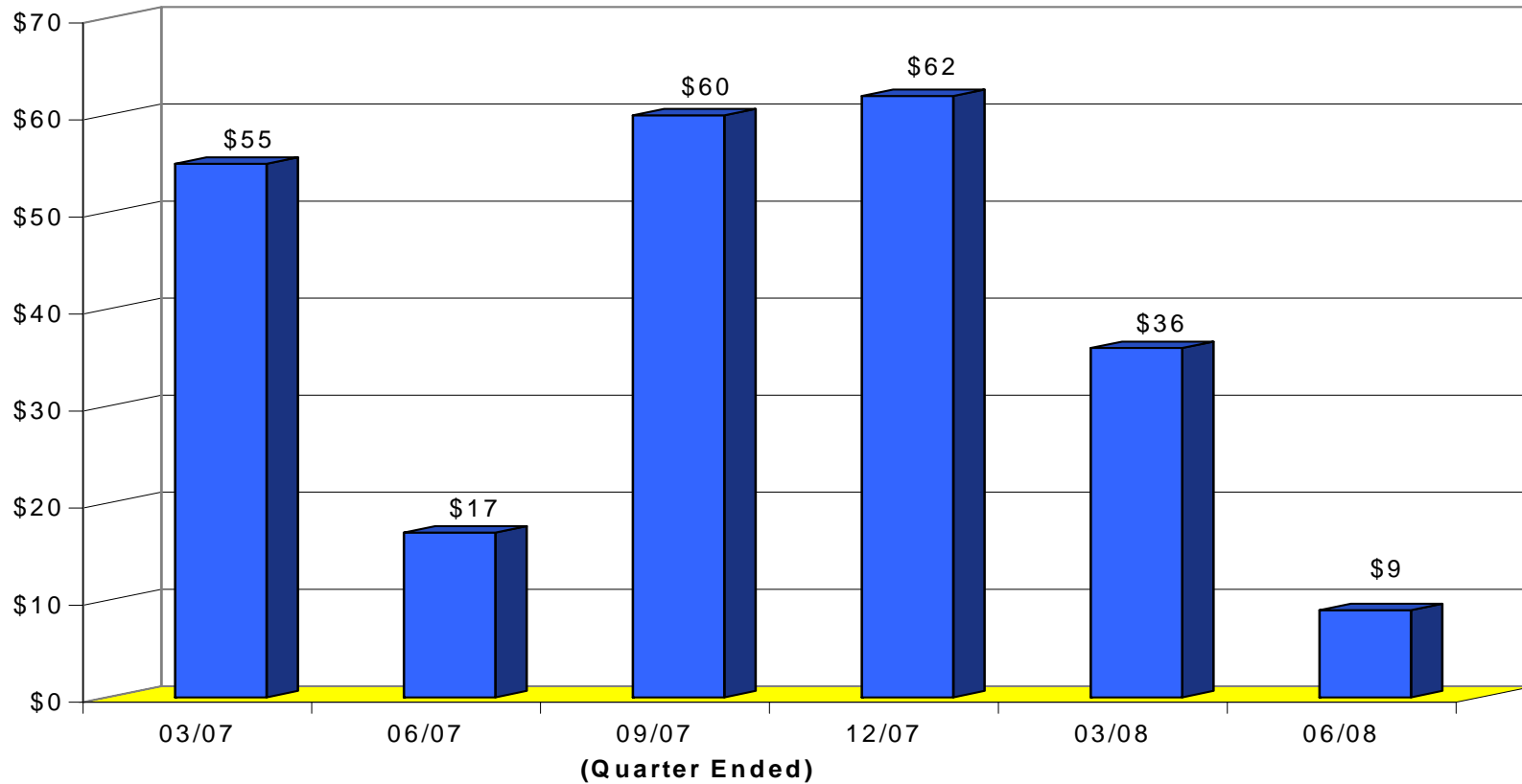


# Loan to Investment Mix



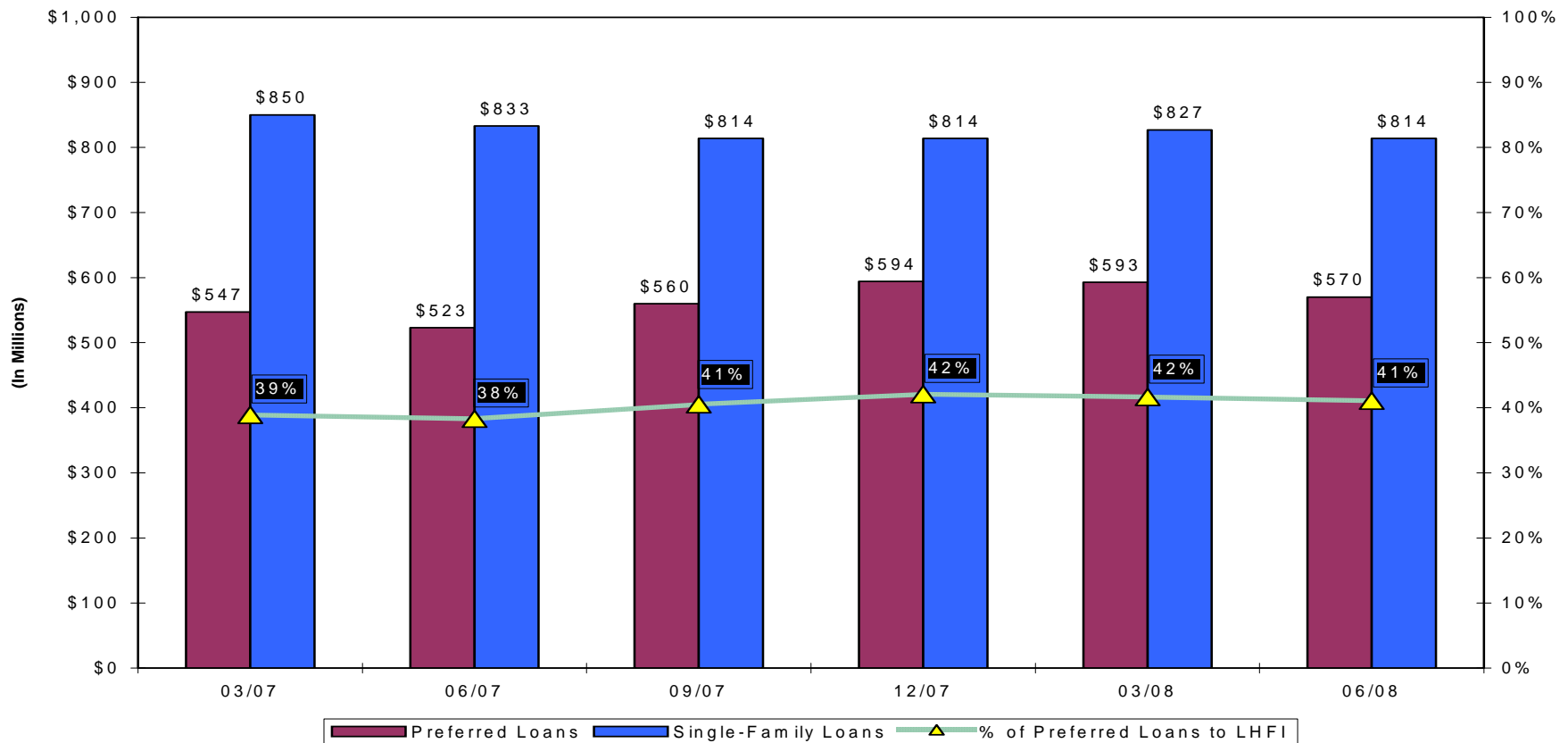
## Provident Bank Loan Originations (Primarily “Preferred Loans”)

(In Millions)





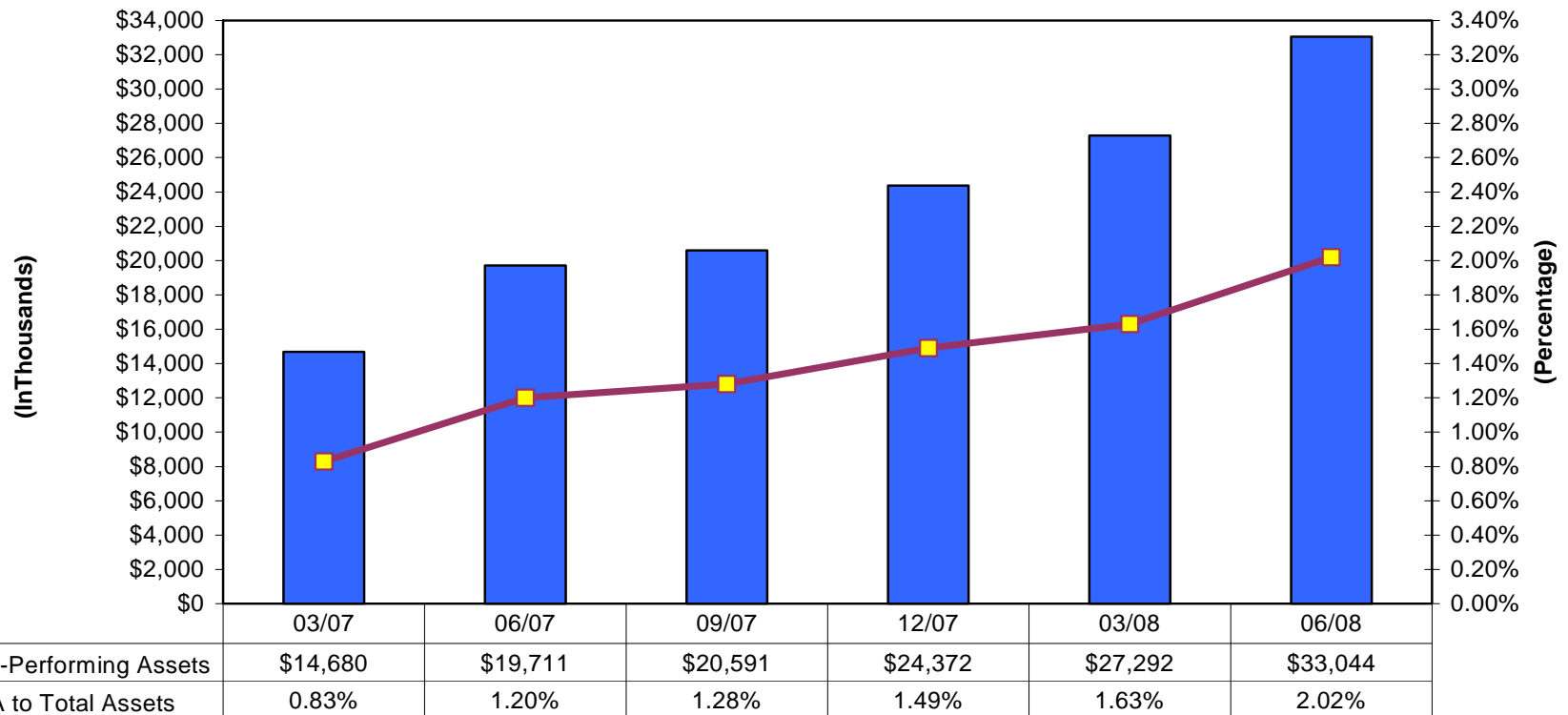
## Loan Portfolio Mix (Loans Held for Investment)



“Preferred Loans” – Multi-Family, Commercial Real Estate, Construction and Commercial Business Loans.

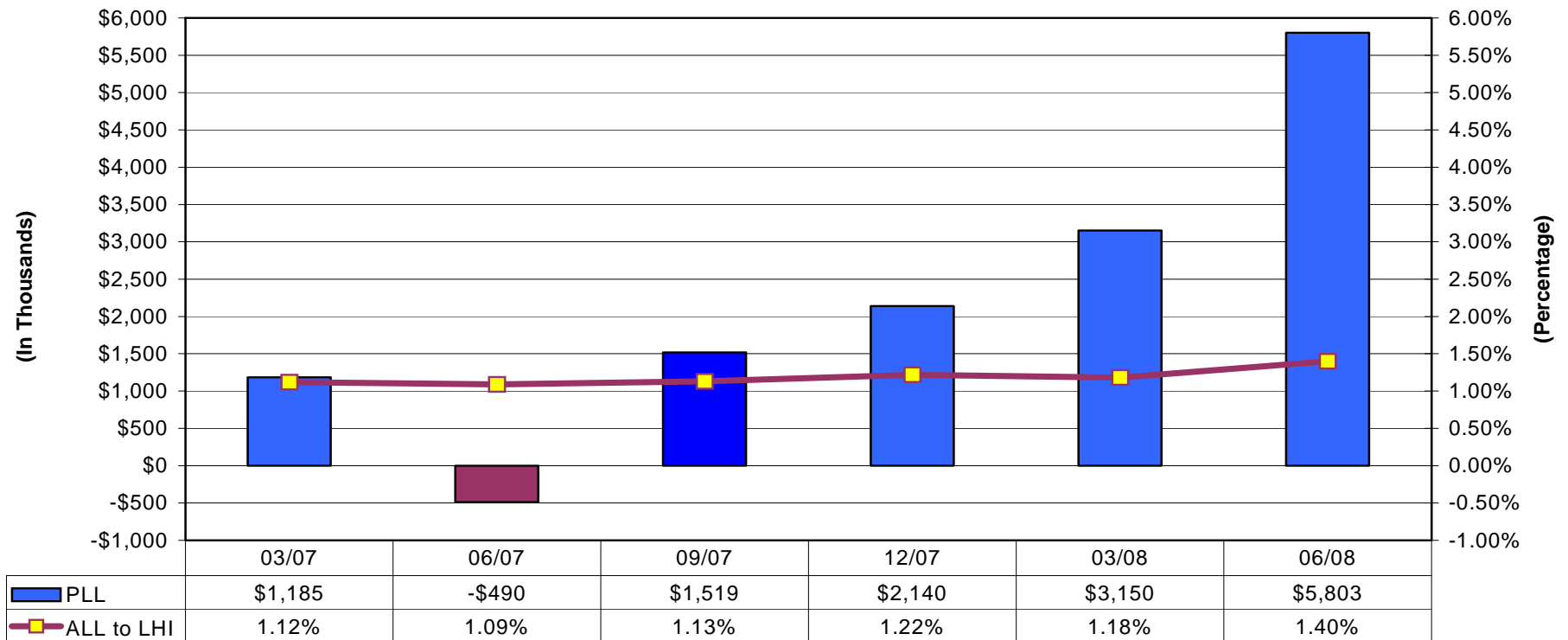
# Asset Quality

## Non-Performing Assets ("NPA") & NPA to Total Assets



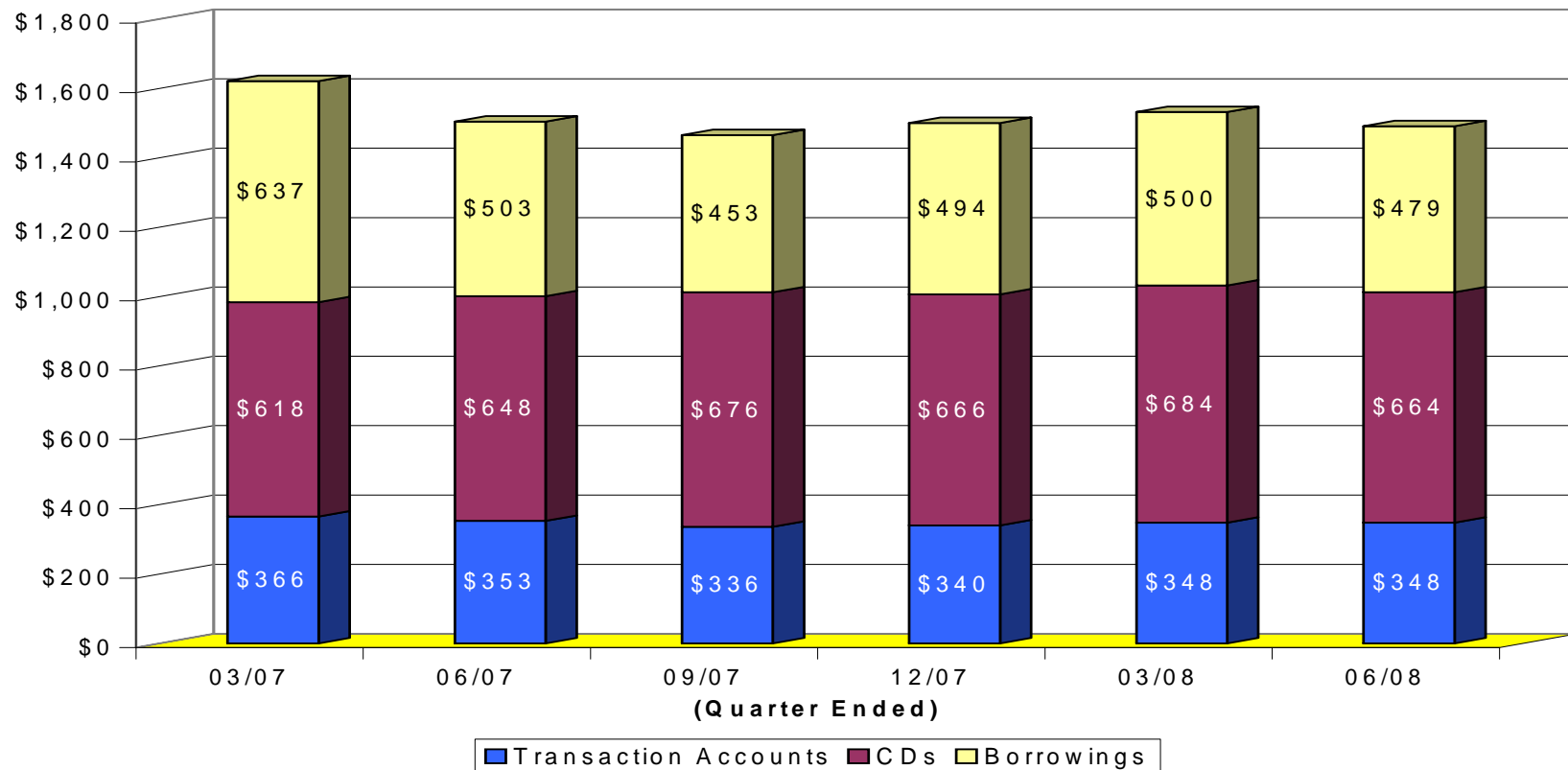
# Asset Quality

## Provision for Loan Losses (PLL) & Allowance for Loan Losses to Loans Held for Investment (ALL to LHI)

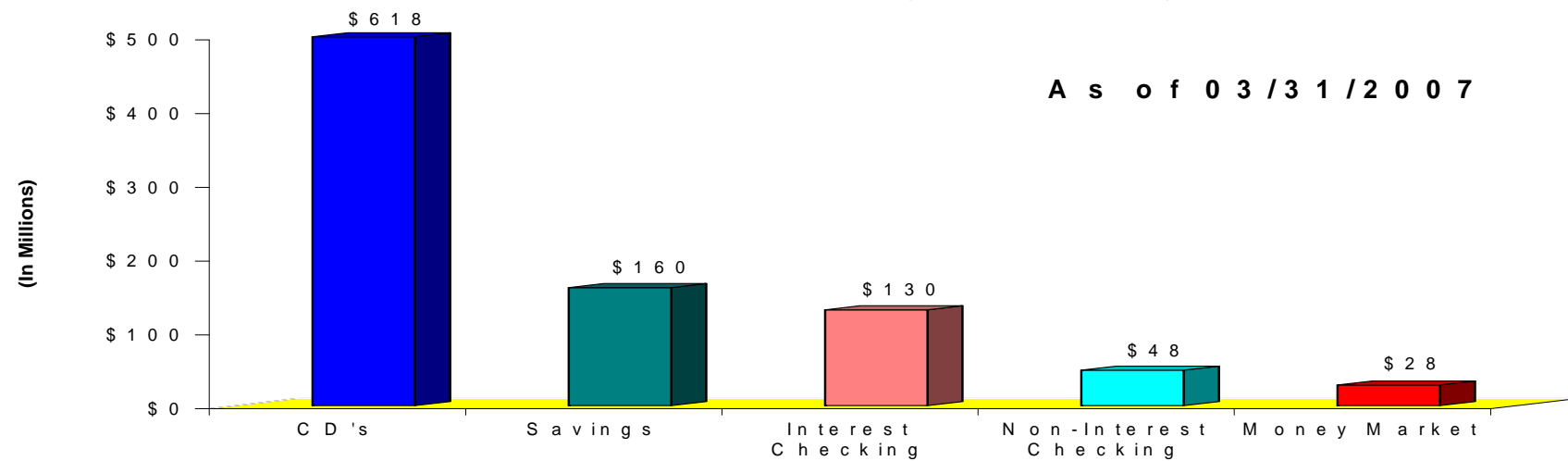
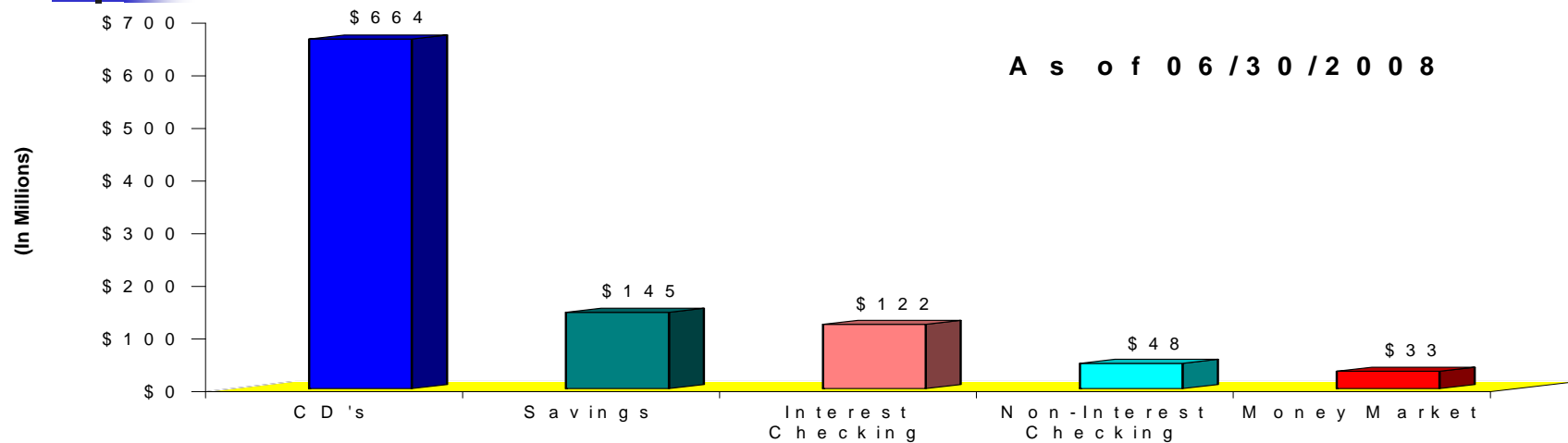


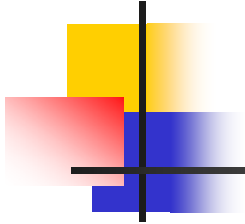
## Transaction Accounts, CDs & Borrowings

(In Millions)



# Deposit Composition





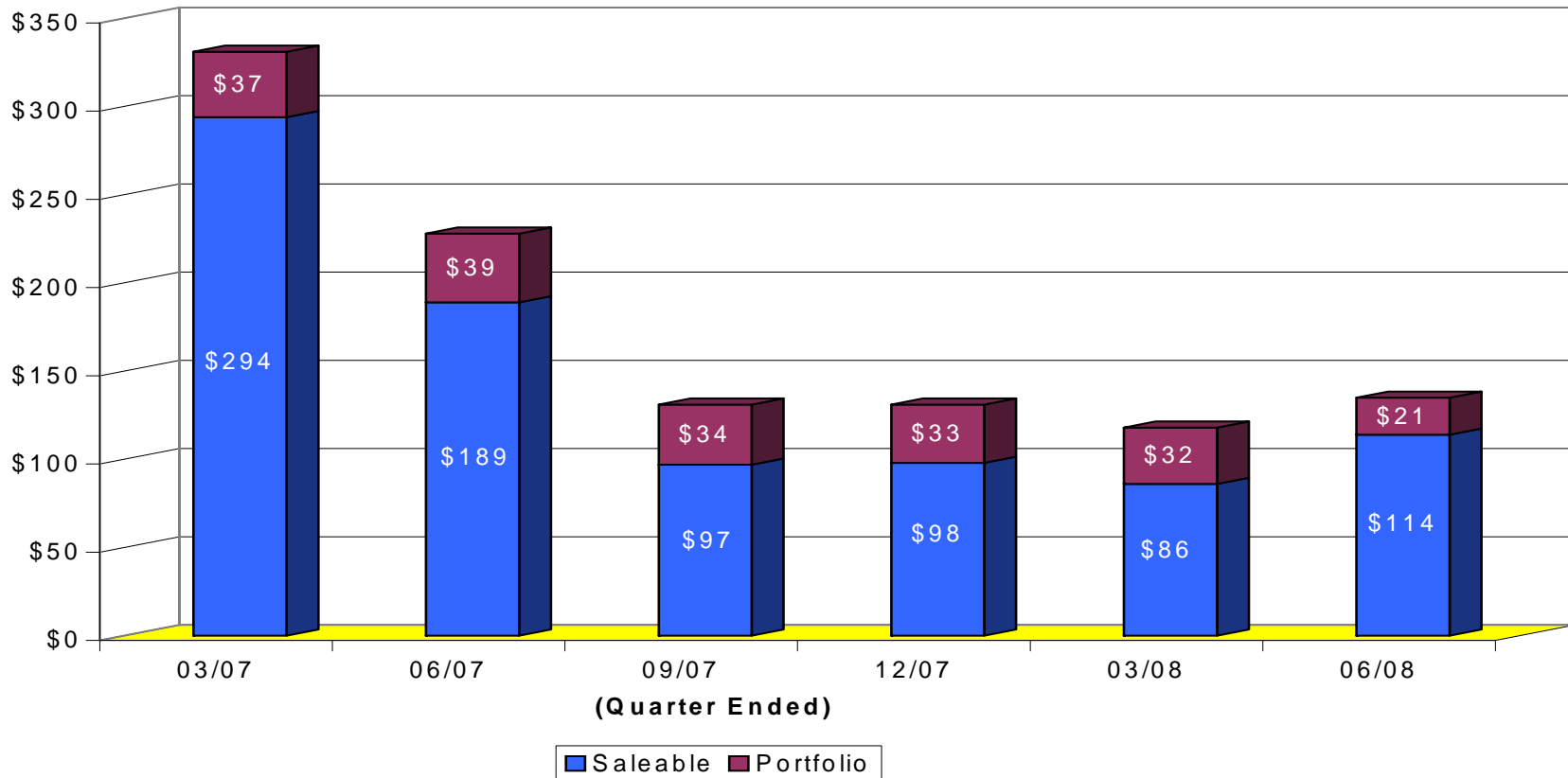
# Mortgage Banking



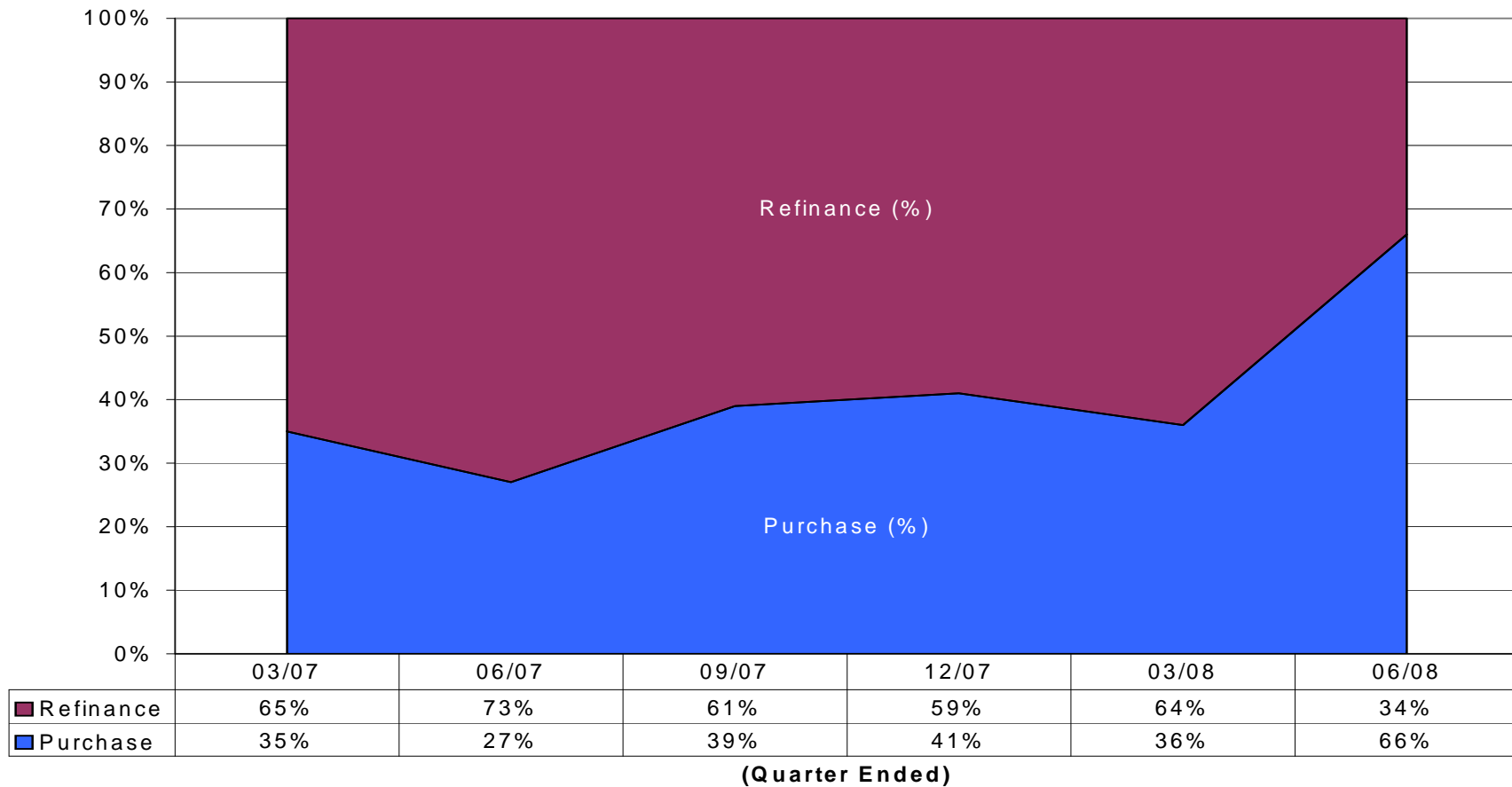
**Faster funded home loans.**

# Provident Bank Mortgage Loan Originations

(In Millions)

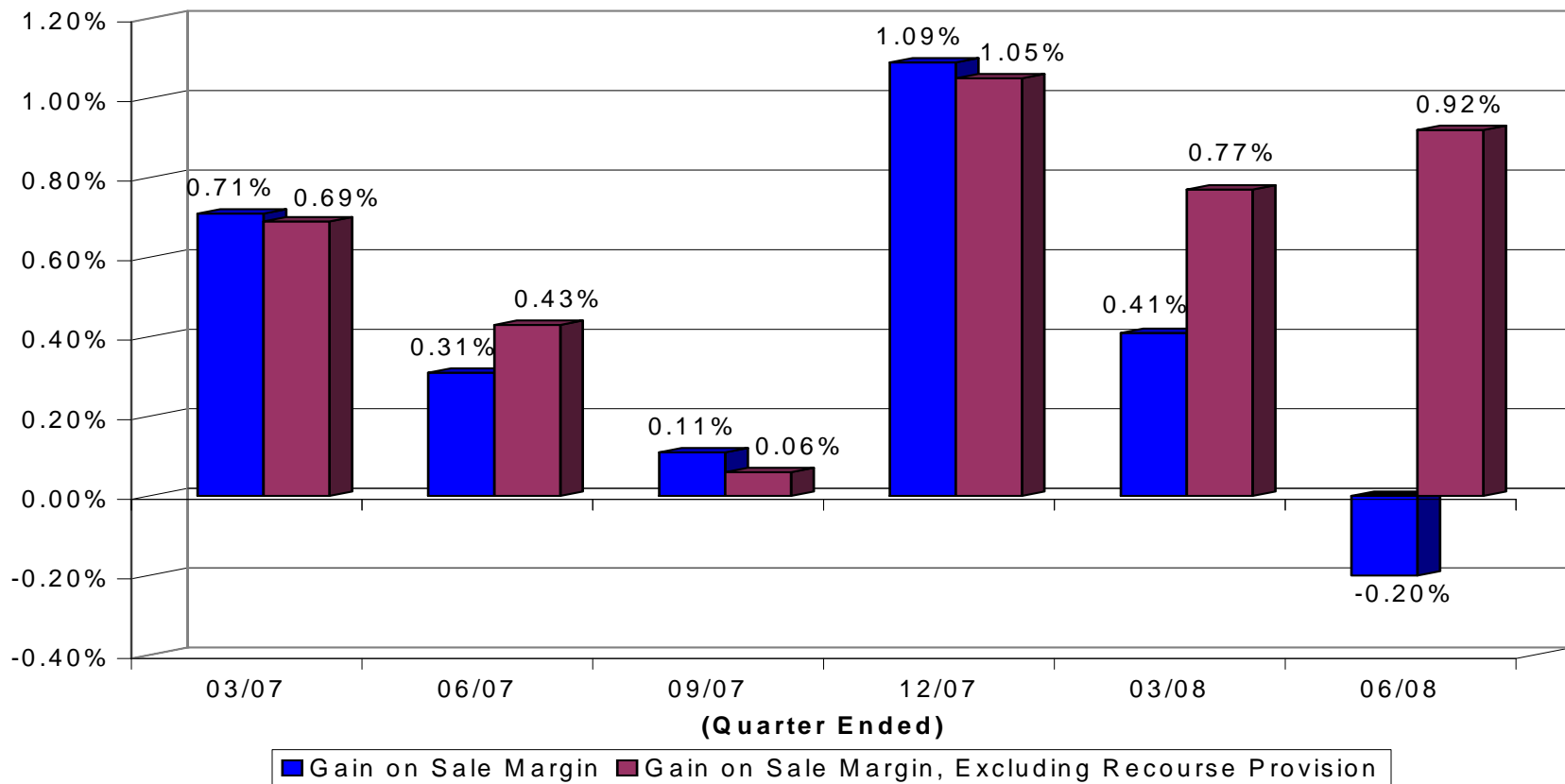


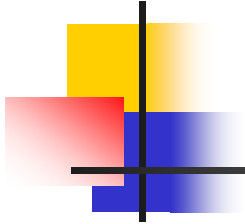
## PBM Purchase vs. Refinance





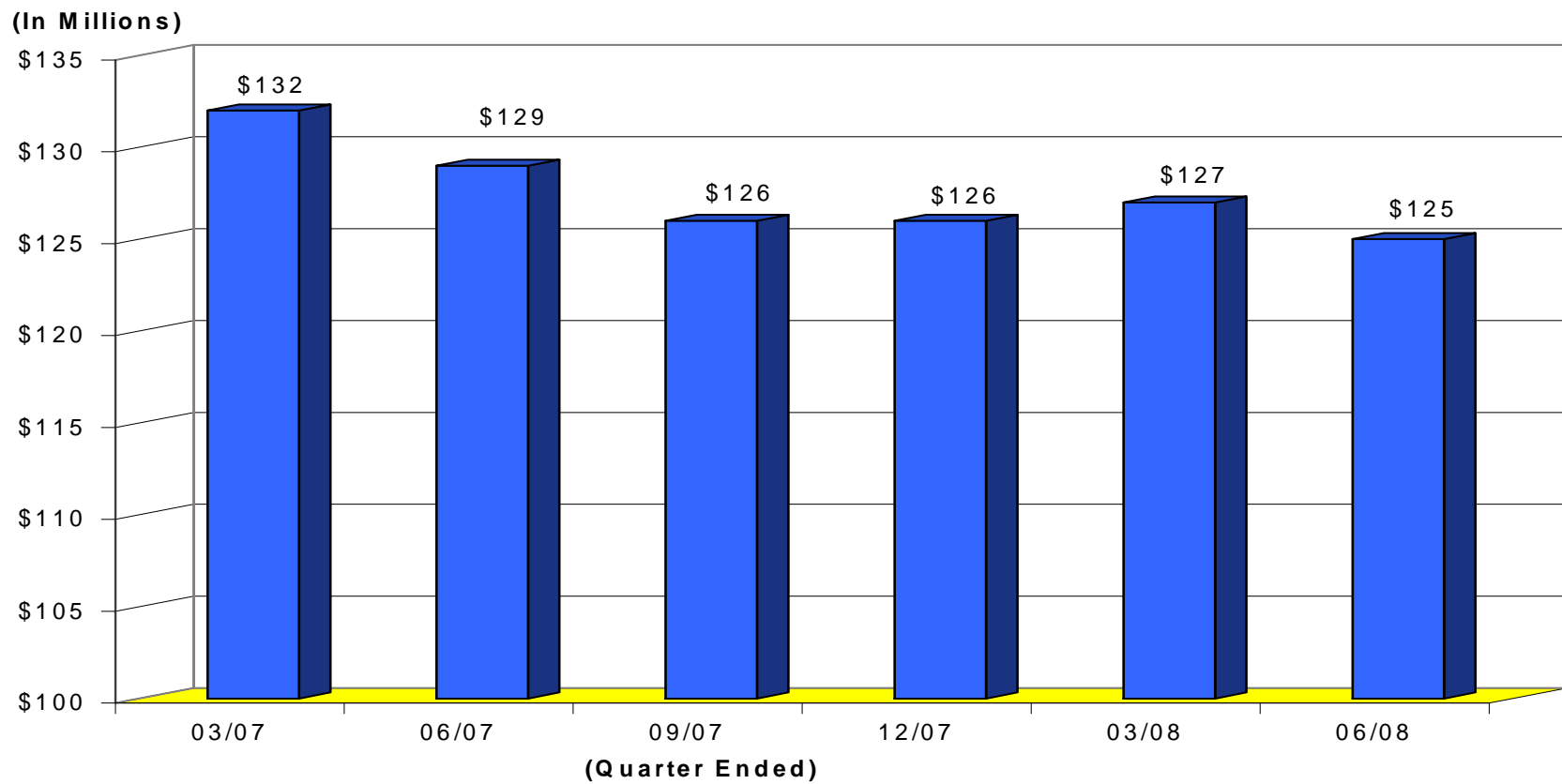
# Loan Sale Margin



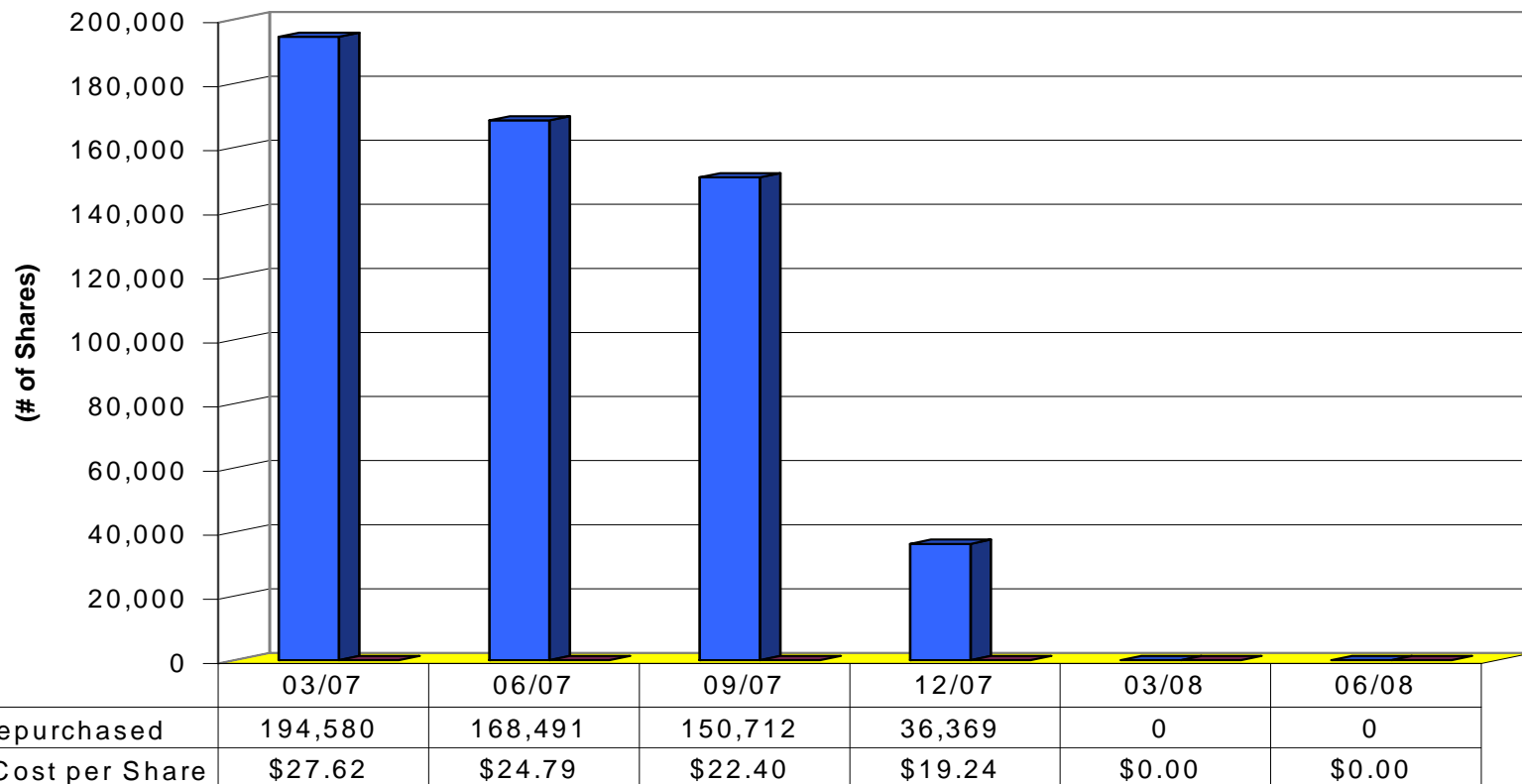


# Capital Management

# Stockholders' Equity

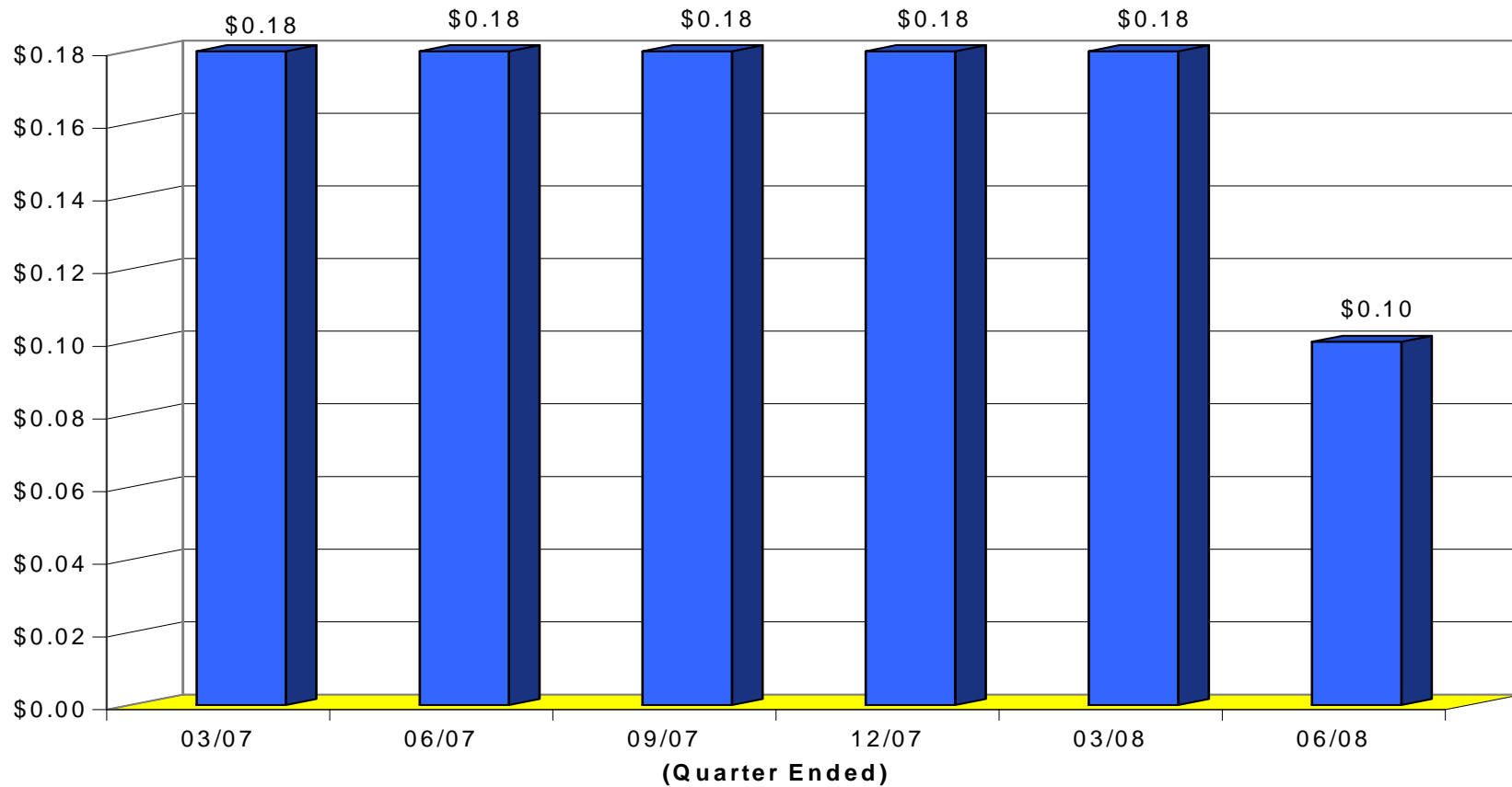


# Share Repurchase Program



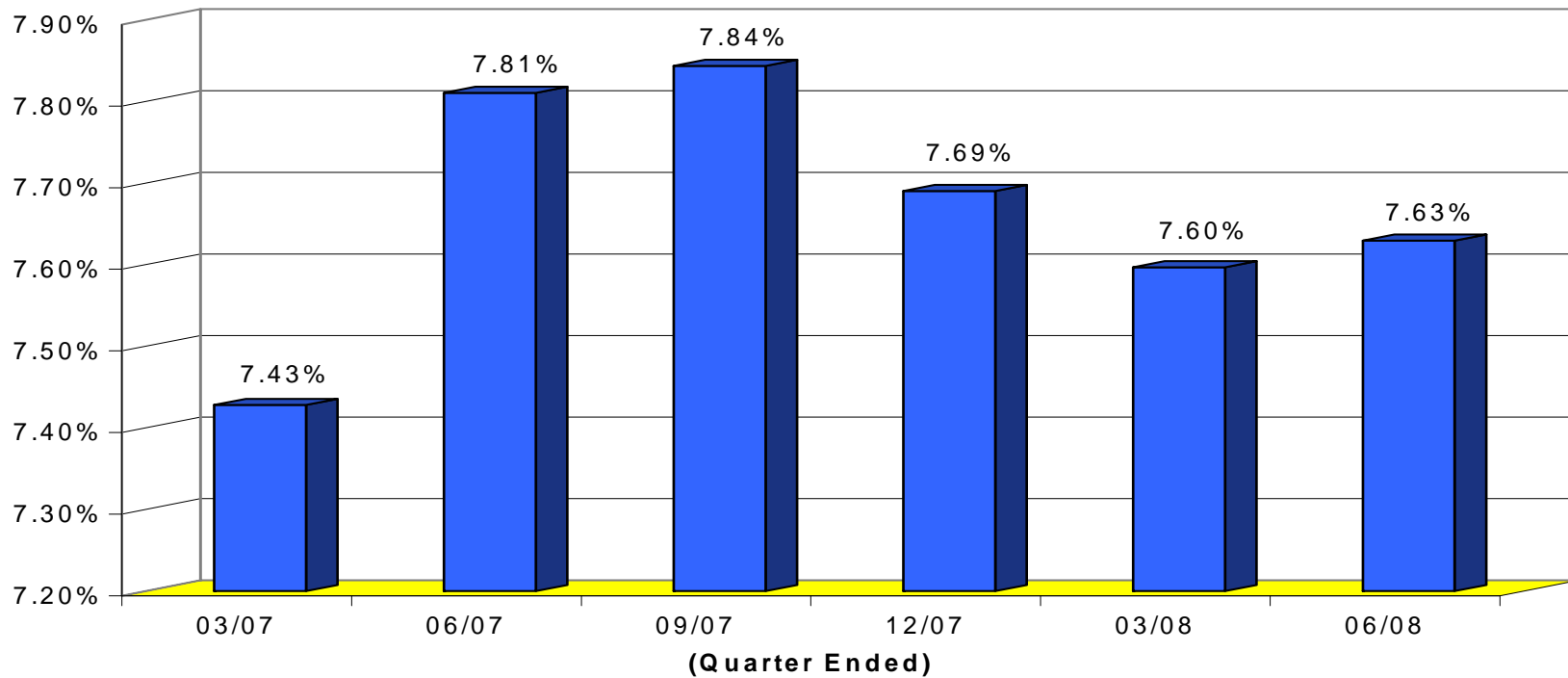
(Quarter Ended)

## Cash Dividend per Share



# Consolidated Capital Ratio

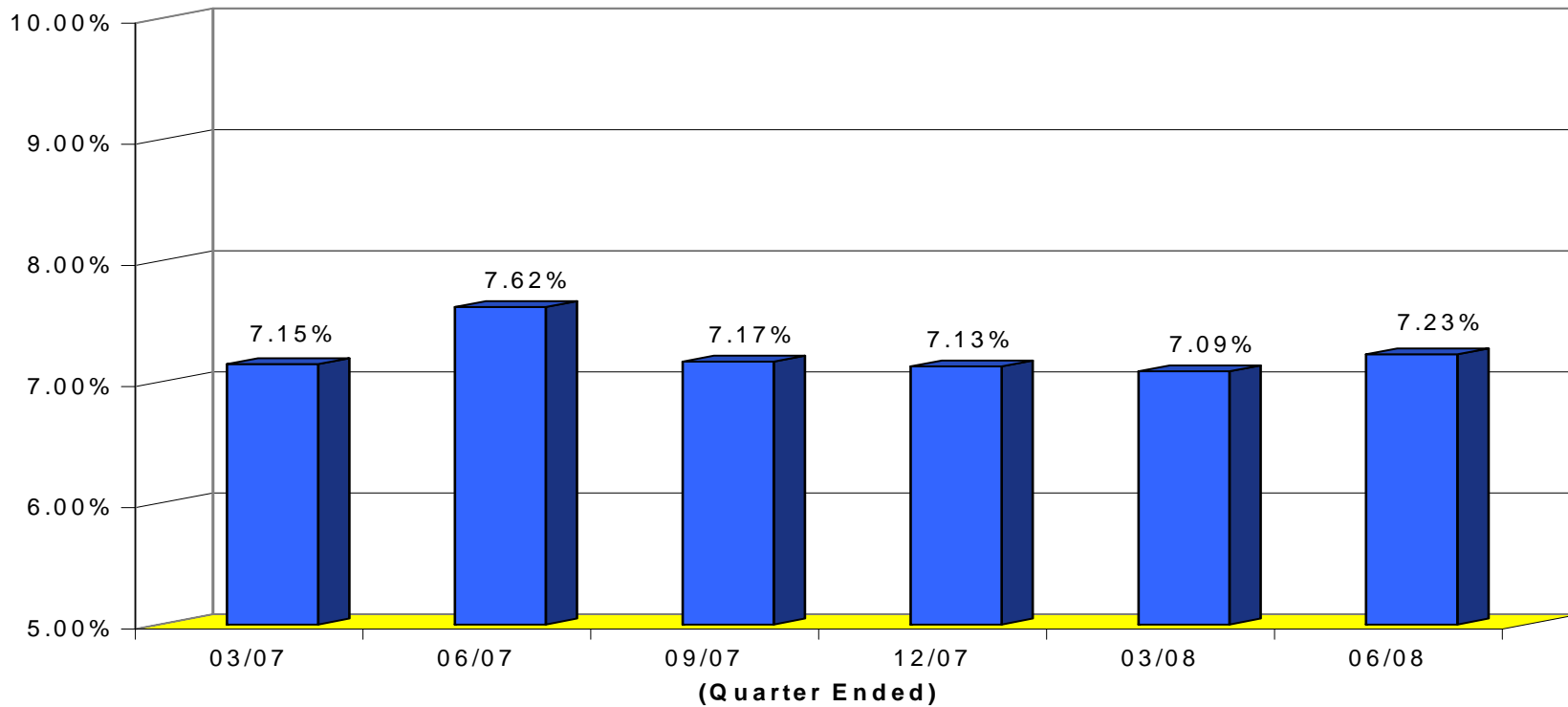
## Equity to Assets





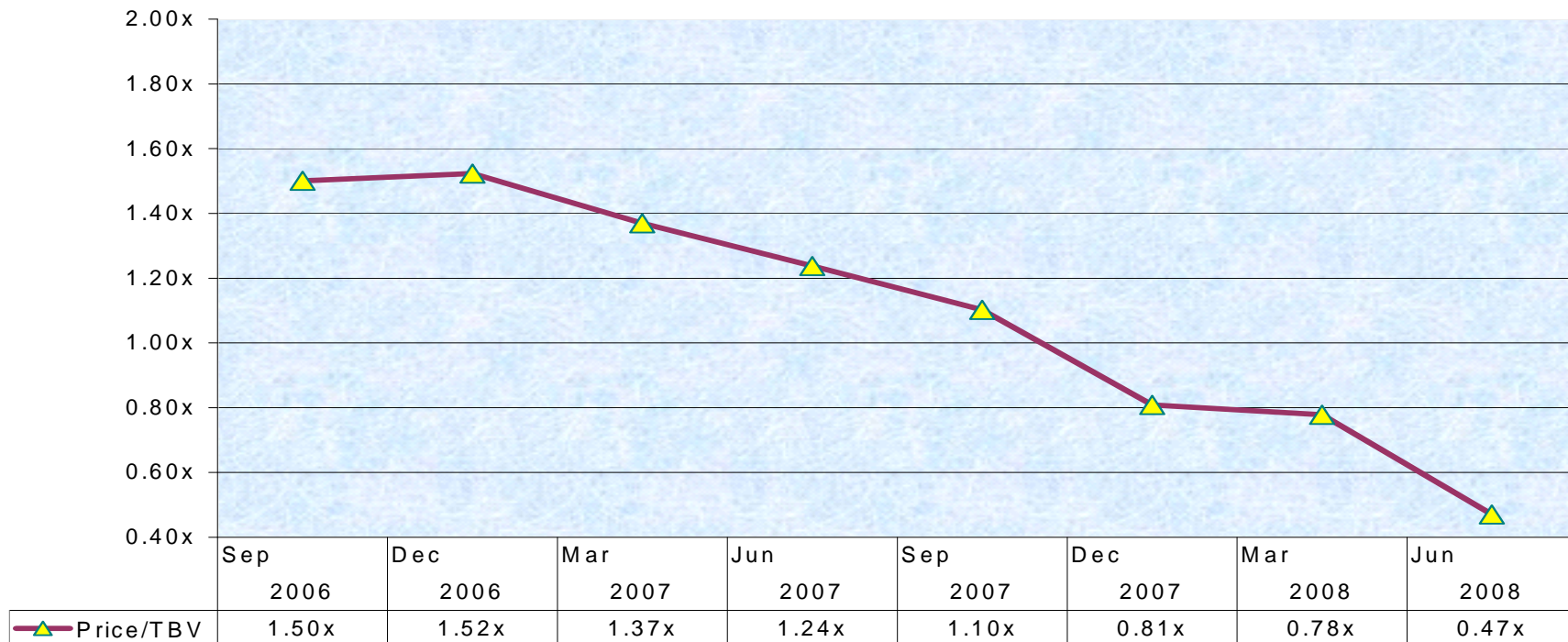
# Bank Capital Ratio

## Tier 1 Core Capital Ratio



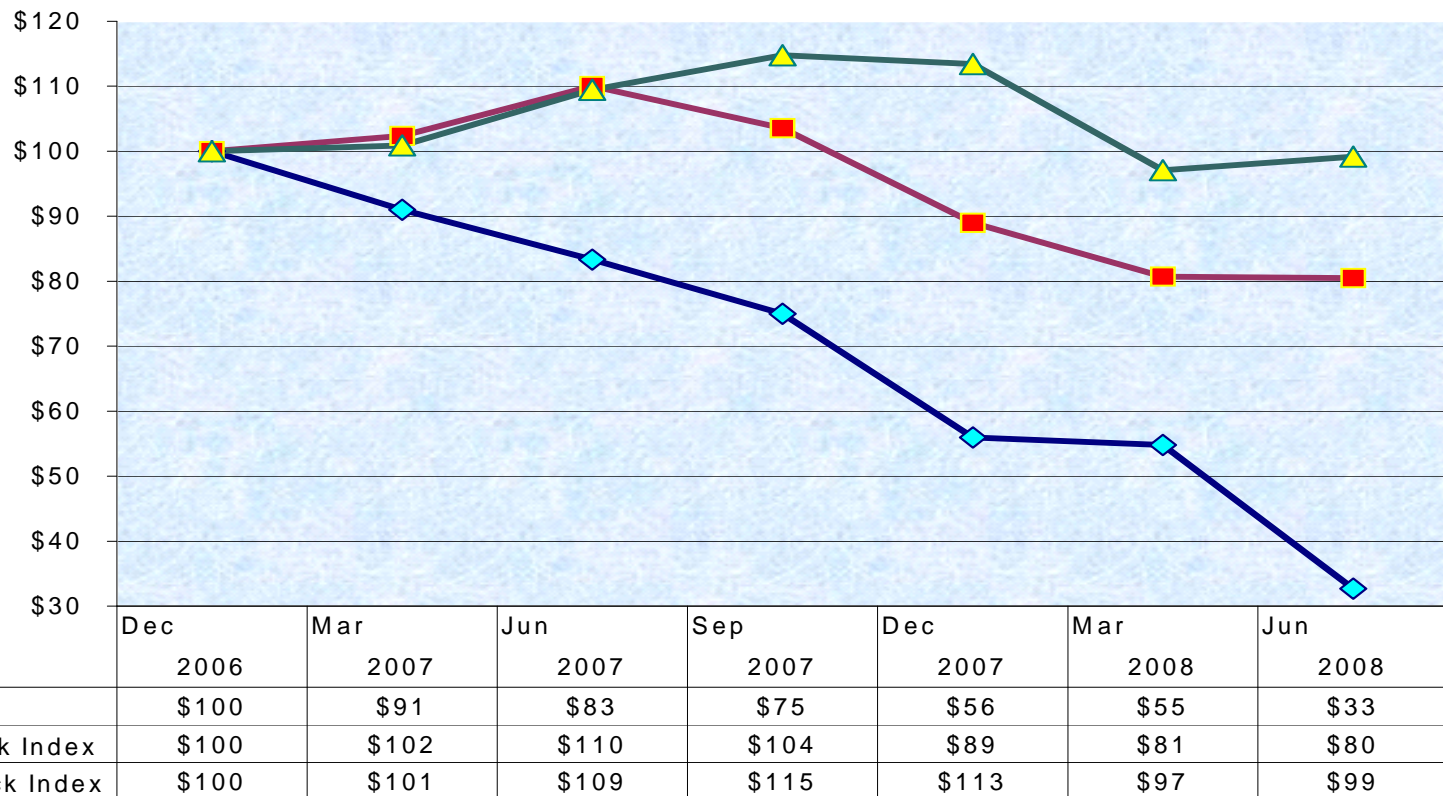
# Value Proposition

**Stock Price to Tangible Book Value Multiple**

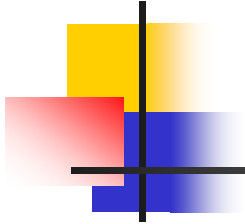




# Stock Performance



Assumes that the value of the investment in the Company's Common Stock and in each Index was \$100 on December 31, 2006 and that all dividends were reinvested.



[www.myprovident.com](http://www.myprovident.com)