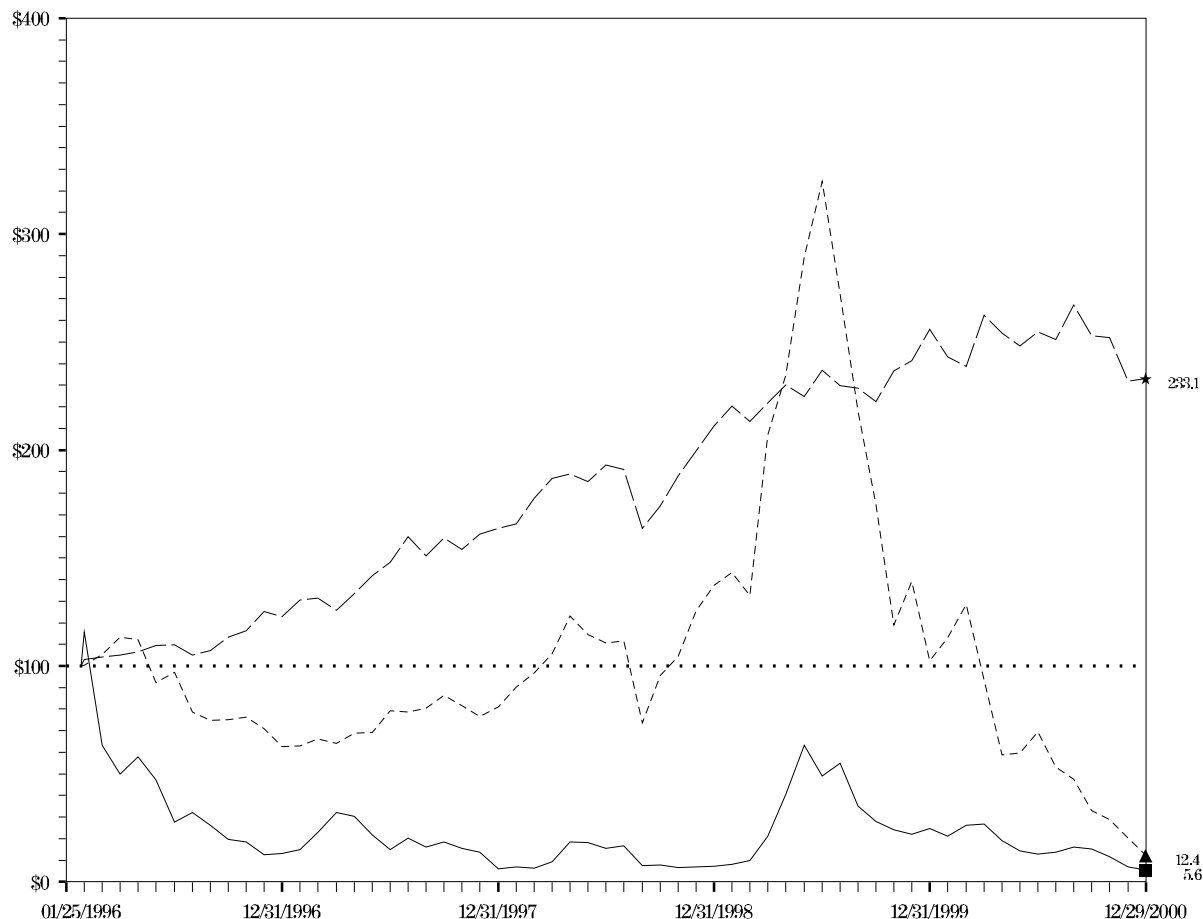


Comparison of Five-Year Cumulative Total Returns Performance Graph for LCA-Vision Inc.

Produced on 02/06/2001 including data to 12/29/2000



Legend

Symbol	CRSP Total Returns Index for:	01/1996	12/1996	12/1997	12/1998	12/1999	12/2000
—■—	LCA-Vision Inc.	100.0	13.2	5.9	7.2	24.7	5.6
---★---	S&P 500 Stocks	100.0	122.7	163.7	211.3	255.9	233.1
---▲---	Self-Determined Peer Group	100.0	62.5	81.1	137.4	102.3	12.4

Companies in the Self-Determined Peer Group

LASER VISION CENTERS INC
T L C LASER EYE CENTERS INC
VISIONAMERICA INC

NOVAMED EYECARE INC
VISION TWENTY ONE INC

Notes:

- A. The lines represent monthly index levels derived from compounded daily returns that include all dividends.
- B. The indexes are reweighted daily, using the market capitalization on the previous trading day.
- C. If the monthly interval, based on the fiscal year-end, is not a trading day, the preceding trading day is used.
- D. The index level for all series was set to \$100.0 on 01/25/1996.