



Division of Investment Management  
Analytics Office

## Money Market Fund Statistics

Form N-MFP Data, period ending August 2020

Filings Received through September 9, 2020

*This is a report of the Staff of the Division of Investment Management's Analytics Office of the U.S. Securities and Exchange Commission. The Commission has expressed no view regarding the analysis, findings, or conclusions contained herein.*

Information presented in this report reflects staff's compilation and analysis of data reported to the Commission on [Form N-MFP](#) for the reference period. The presented information does not reflect any filings or amended filings submitted after September 9, 2020. Staff works with information reported on [Form N-MFP](#) and with filers to correct possible reporting errors and may update reported information to correct what appear to be clear filer errors. Corrected data from amended filings may be published in a corrected report or in the next regular report, as determined by staff.

If you have any questions or comments about this report, please contact [Viktoriya Baklanova](#) ([baklanovav@sec.gov](mailto:baklanovav@sec.gov)), [Isaac Kuznits](#) ([kuznitsi@sec.gov](mailto:kuznitsi@sec.gov)), or [Trevor Tatum](#) ([tatumt@sec.gov](mailto:tatumt@sec.gov)) in the Division of Investment Management's Analytics Office with the subject line "Money Market Fund Statistics."

**Table 1: Number of Money Market Funds Reporting**Fund totals do not include feeder funds. See [Figure 1](#) for more details.

Category	Fund Type	2020-08	Change	2020-07
Prime	Subtotal	77	↓2	79
	Institutional Public	41	↓2	43
	Institutional Nonpublic	7	-	7
	Retail	29	-	29
Tax Exempt	Subtotal	80	-	80
	Institutional	14	-	14
	Retail	66	-	66
Government & Treasury	Subtotal	200	-	200
	Government	144	-	144
	Treasury	56	-	56
<b>Total</b>	<b>Total</b>	<b>357</b>	<b>↓2</b>	<b>359</b>

**Table 2: Money Market Fund Net Assets (\$ Billions)<sup>1</sup>**See [Figure 2](#) for more details.

Category	Fund Type	2020-08	Change	2020-07
Prime	Subtotal	1,138.4	↓7.1	1,145.5
	Institutional Public	483.6	↓1.7	485.3
	Institutional Nonpublic	221.1	↑4.8	216.3
	Retail	433.7	↓10.2	443.9
Tax Exempt	Subtotal	128.6	↓0.6	129.2
	Institutional	20.0	↑1.5	18.5
	Retail	108.6	↓2.1	110.7
Government & Treasury	Subtotal	3,713.6	↓49.3	3,762.9
	Government	2,507.7	↓14.9	2,522.6
	Treasury	1,205.9	↓34.4	1,240.3
<b>Total</b>	<b>Total</b>	<b>4,980.6</b>	<b>↓57.0</b>	<b>5,037.6</b>

<sup>1</sup>Some calculations in the change column in the tables in this report may not total as expected due to rounding. Terms used in this report are defined in [Appendix II](#), Key Definitions.

**Table 3: Asset-Weighted Seven-Day Gross Yield (Percent)**  
See [Figure 3](#) for more details.

Category	Fund Type	2020-08	Change	2020-07
Prime	Institutional	0.22	↓0.05	0.27
	Retail	0.25	↓0.06	0.31
Tax Exempt	Institutional	0.12	↓0.11	0.23
	Retail	0.22	↓0.11	0.33
Government & Treasury	Government	0.19	↓0.04	0.23
	Treasury	0.20	↓0.04	0.24

**Table 4: Asset-Weighted Seven-Day Net Yield (Percent)**  
See [Figure 4](#) for more details.

Category	Fund Type	2020-08	Change	2020-07
Prime	Institutional	0.15	↓0.04	0.19
	Retail	0.06	↓0.03	0.09
Tax Exempt	Institutional	0.04	↓0.07	0.11
	Retail	0.03	↓0.07	0.10
Government & Treasury	Government	0.03	↓0.03	0.06
	Treasury	0.03	↓0.03	0.06

**Table 5: Weighted Average Life (Days)**  
See [Figure 5](#) for more details.

Category	Fund Type	2020-08	Change	2020-07
Prime	Institutional	59.2	↓3.6	62.8
	Retail	66.5	↓1.3	67.8
Tax Exempt	Institutional	15.5	↓1.3	16.8
	Retail	35.6	↑2.2	33.4
Government & Treasury	Government	99.7	↓2.0	101.7
	Treasury	97.1	↑0.2	96.9

**Table 6: Weighted Average Maturity (Days)**See [Figure 6](#) for more details.

Category	Fund Type	2020-08	Change	2020-07
Prime	Institutional	40.0	↓2.6	42.6
	Retail	47.7	↓0.6	48.3
Tax Exempt	Institutional	14.9	↓1.0	16.0
	Retail	33.8	↑2.6	31.2
Government & Treasury	Government	39.9	↓1.3	41.2
	Treasury	46.7	↑0.7	46.0

**Table 7: Ratio of Daily Liquid Assets to Total Assets (Percent)**See [Figure 7](#) for more details.

Category	Fund Type	2020-08	Change	2020-07
Prime	Institutional	51.2	↑1.6	49.6
	Retail	46.3	↑4.6	41.7
Government & Treasury	Government	63.4	↑1.6	61.8
	Treasury	96.4	↓0.1	96.5

**Table 8: Ratio of Weekly Liquid Assets to Total Assets (Percent)**See [Figure 8](#) for more details.

Category	Fund Type	2020-08	Change	2020-07
Prime	Institutional	62.8	↑1.8	61.0
	Retail	58.6	↑7.2	51.4
Tax Exempt	Institutional	87.0	↓0.4	87.4
	Retail	74.6	↑1.6	73.0
Government & Treasury	Government	78.6	↑0.8	77.8
	Treasury	99.4	↓0.1	99.5

**Table 9: Prime Holdings of Bank-Related Securities  
by Country (\$ Billions)**  
See [Figure 9](#) for more details.

Country	2020-08	Change	2020-07
Canada	119.0	↓2.8	121.9
Japan	94.9	↓3.8	98.7
France	86.0	↓1.4	87.5
US	72.0	↓0.9	72.9
Germany	45.4	↑0.0	45.4
UK	42.4	↓0.9	43.4
Netherlands	31.0	↓2.9	33.9
Aust/NZ	21.7	↓0.9	22.6
Switzerland	18.3	↑1.0	17.3

**Table 10: Prime Holdings of Bank-Related Securities  
by Region (\$ Billions)**  
See [Figure 10](#) for more details.

Country	2020-08	Change	2020-07
Americas	191.7	↓3.7	195.4
Eurozone	171.0	↓4.1	175.1
Asia-Pacific	130.7	↓8.2	138.9
Europe (non-Euro)	105.1	↑5.6	99.5

**Table 11: Prime Money Market Fund Aggregate Product  
Exposures (\$ Billions)**  
See [Figure 11](#) for more details.

Asset Type	2020-08	Change	2020-07
Gov. and Treas.	542.5	↑29.1	513.4
CDs and Time Deposits	249.0	↓8.3	257.3
Financial Co. CP	157.8	↓6.0	163.8
Non-Financial Co. CP and Other	144.1	↓12.2	156.3
Asset-Backed	56.2	↓3.2	59.4
<b>Total</b>	<b>1,149.6</b>	<b>↓0.6</b>	<b>1,150.2</b>

**Table 12: Government & Treasury Funds Bank Repo Counterparties by Country (\$ Billions)**

See [Figure 12](#) for more details.

Month	2020-08	Change	2020-07
US	179.8	↑11.5	168.3
Canada	134.4	↑5.0	129.4
France	197.2	↑8.1	189.1
UK	78.4	↑1.7	76.7
Germany	21.0	↓6.5	27.5
Japan	132.0	↑13.4	118.6
Other	44.8	↑0.7	44.1
<b>Total</b>	<b>787.6</b>	<b>↑33.9</b>	<b>753.7</b>

**Table 13: Money Market Fund Repurchase Agreements with the Federal Reserve (\$ Billions)**

See [Figure 13](#) for more details.

	2020-08	Change	2020-07
<b>Total</b>	<b>0.0</b>	<b>↓0.2</b>	<b>0.2</b>

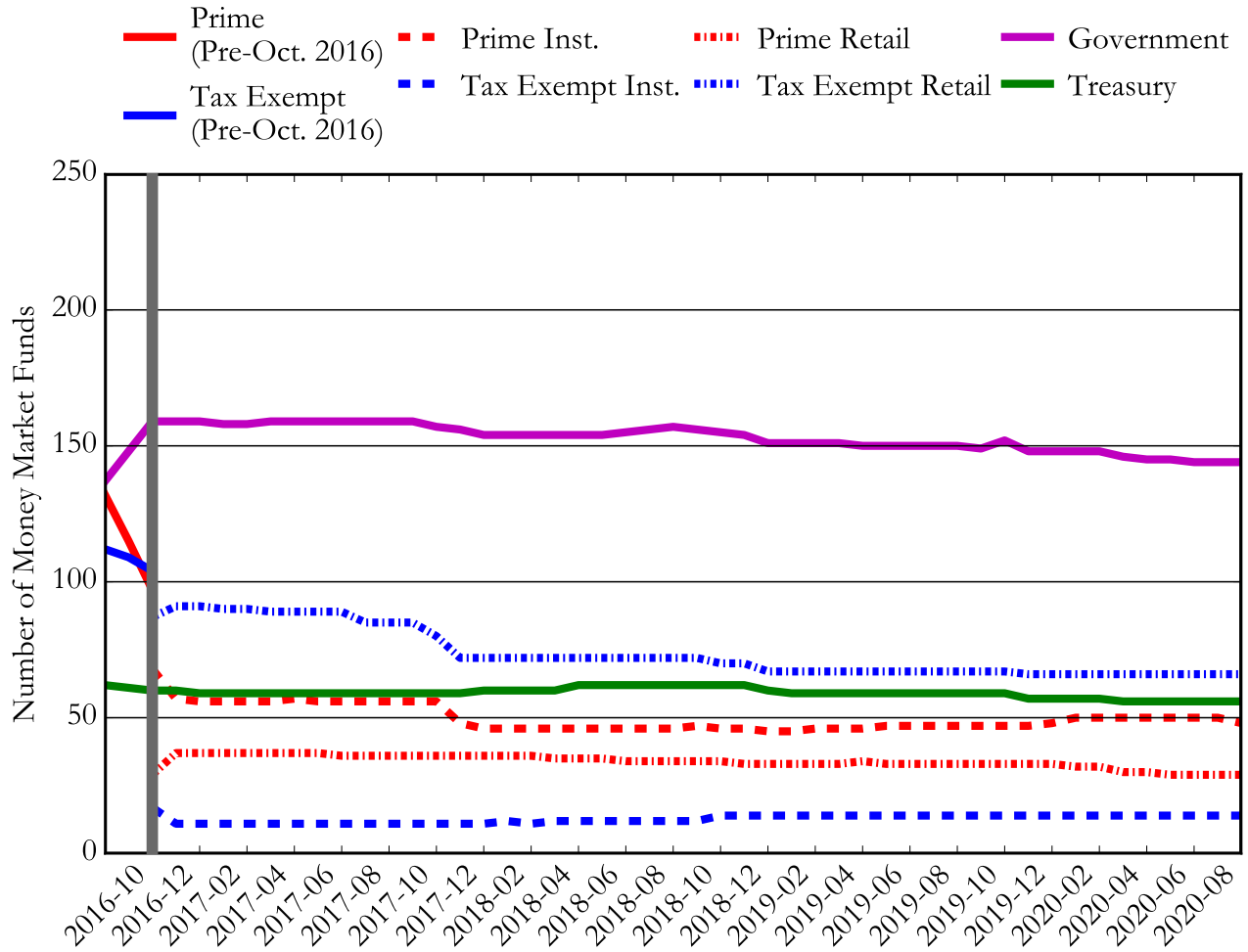
**Table 14: Securities with more than 179 Days to Maturity (Percent)**

See [Figure 14](#) for more details.

Category	Fund Type	2020-08	Change	2020-07
Prime	Institutional	7.3	↓0.9	8.2
	Retail	6.3	↓0.4	6.7
Tax Exempt	Institutional	2.6	↓0.1	2.7
	Retail	7.2	↑0.2	7.0
Government & Treasury	Government	15.9	↓0.6	16.5
	Treasury	13.8	↓1.2	15.0

**Figure 1: Number of Money Market Funds<sup>2</sup>**

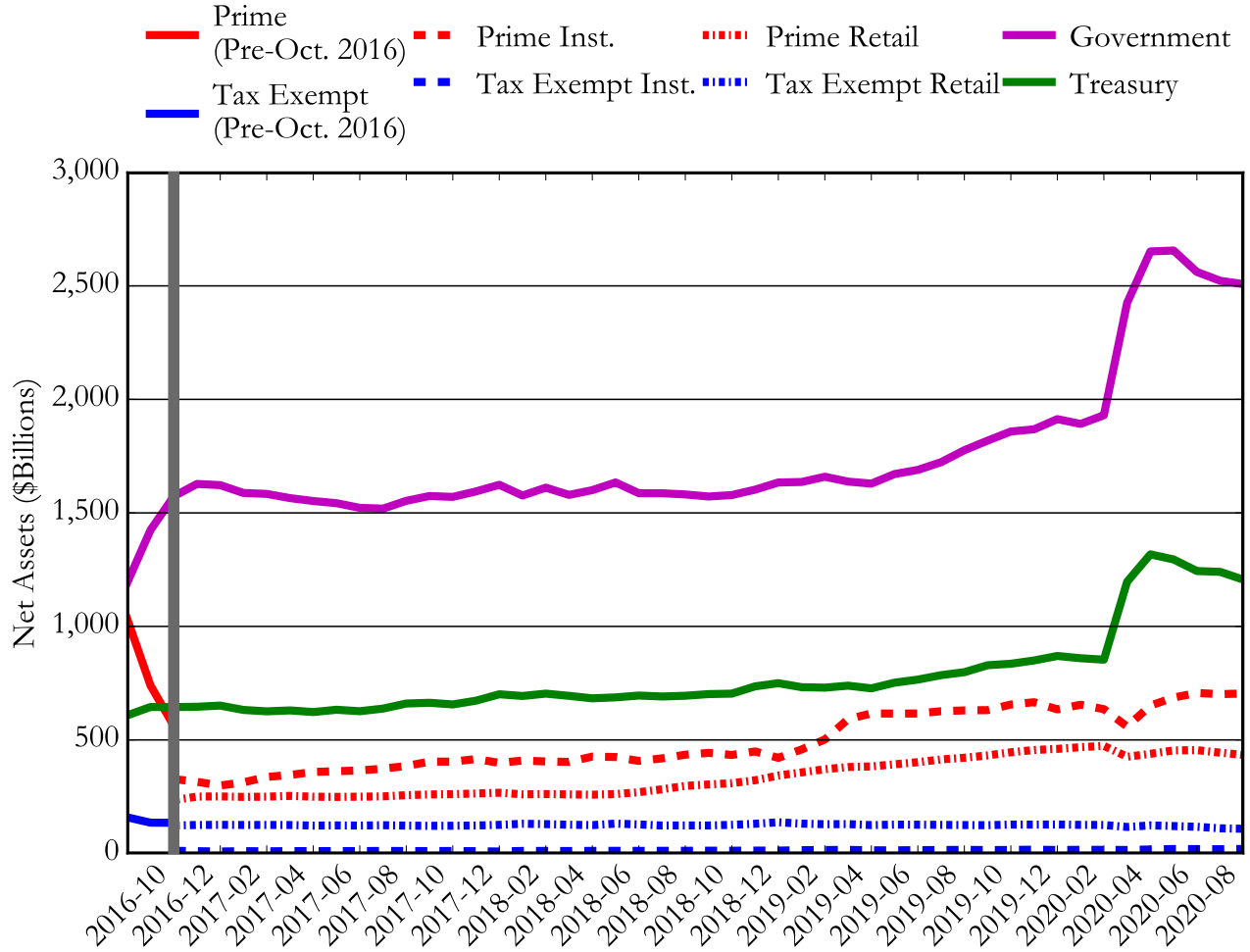
See [Table A1](#) for more details.



<sup>2</sup>Beginning in October 2016, [Form N-MFP](#) required prime and tax exempt money market funds to identify themselves as institutional or retail funds; up to that date, Funds reported without making this distinction.

**Figure 2: Money Market Fund Net Assets (\$ Billions)**

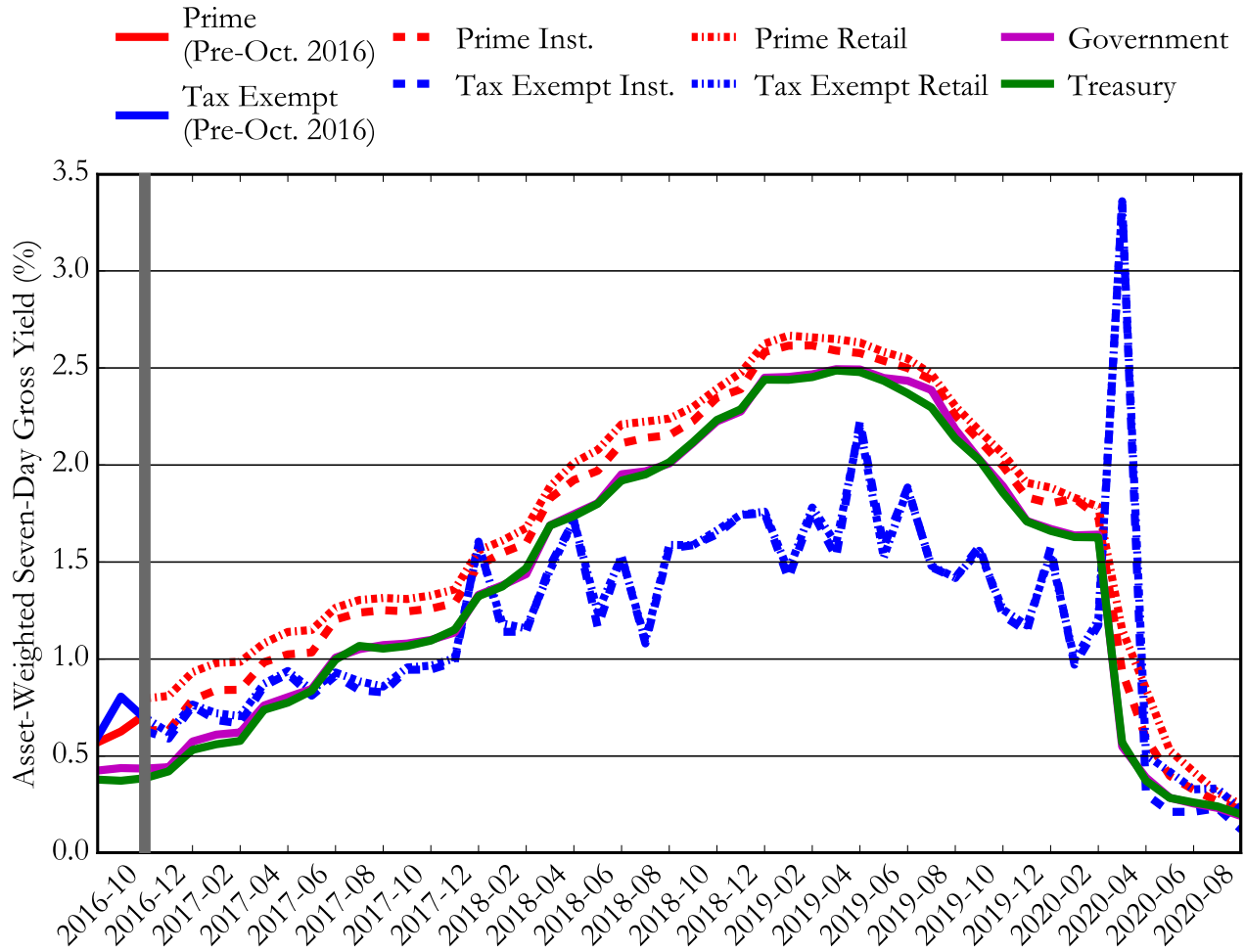
See [Table A2](#) for more details.





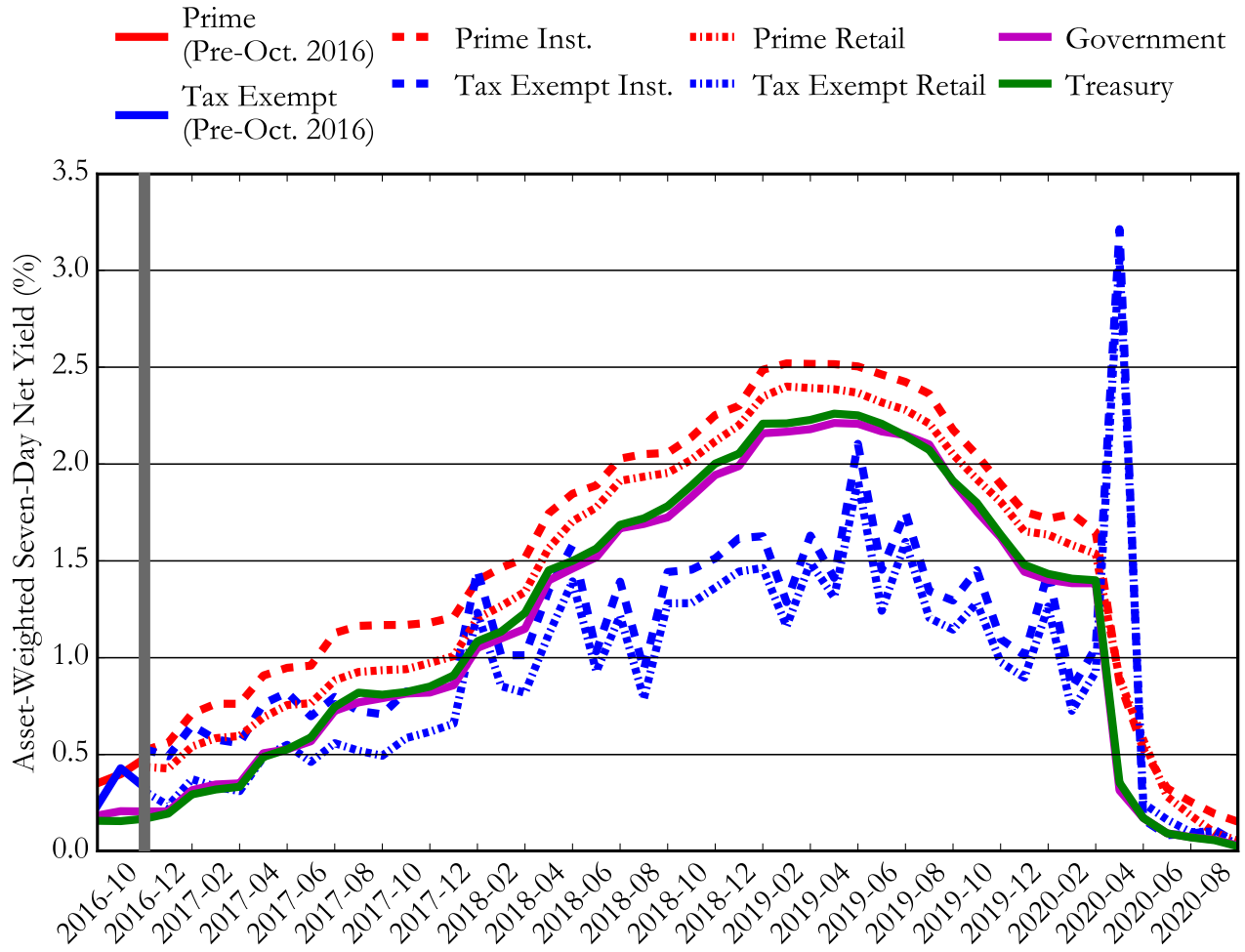
**Figure 3: Weighted 7-Day Gross Yields**

See [Table A3](#) for more details.



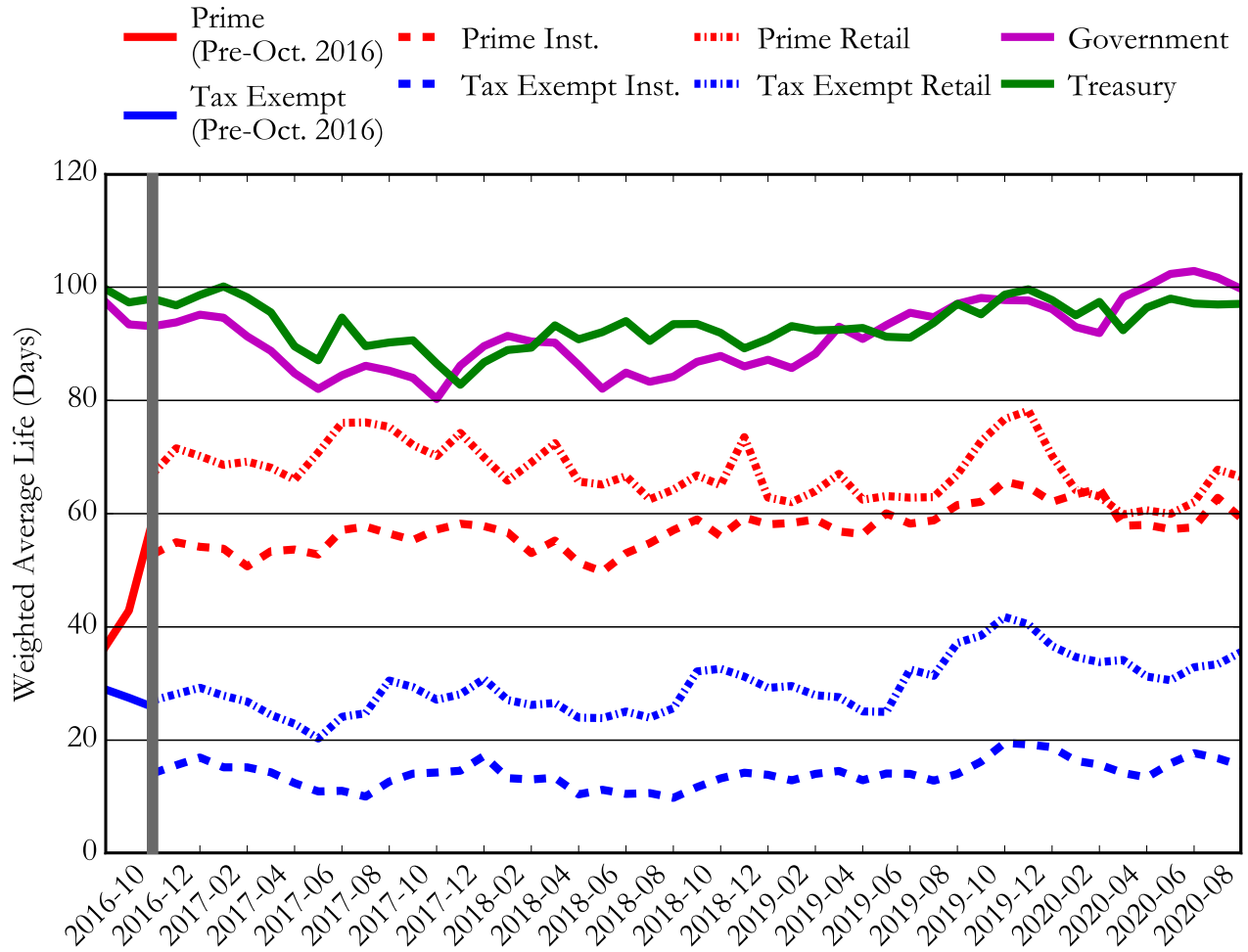
**Figure 4: Weighted 7-Day Net Yields**

See [Table A4](#) for more details.



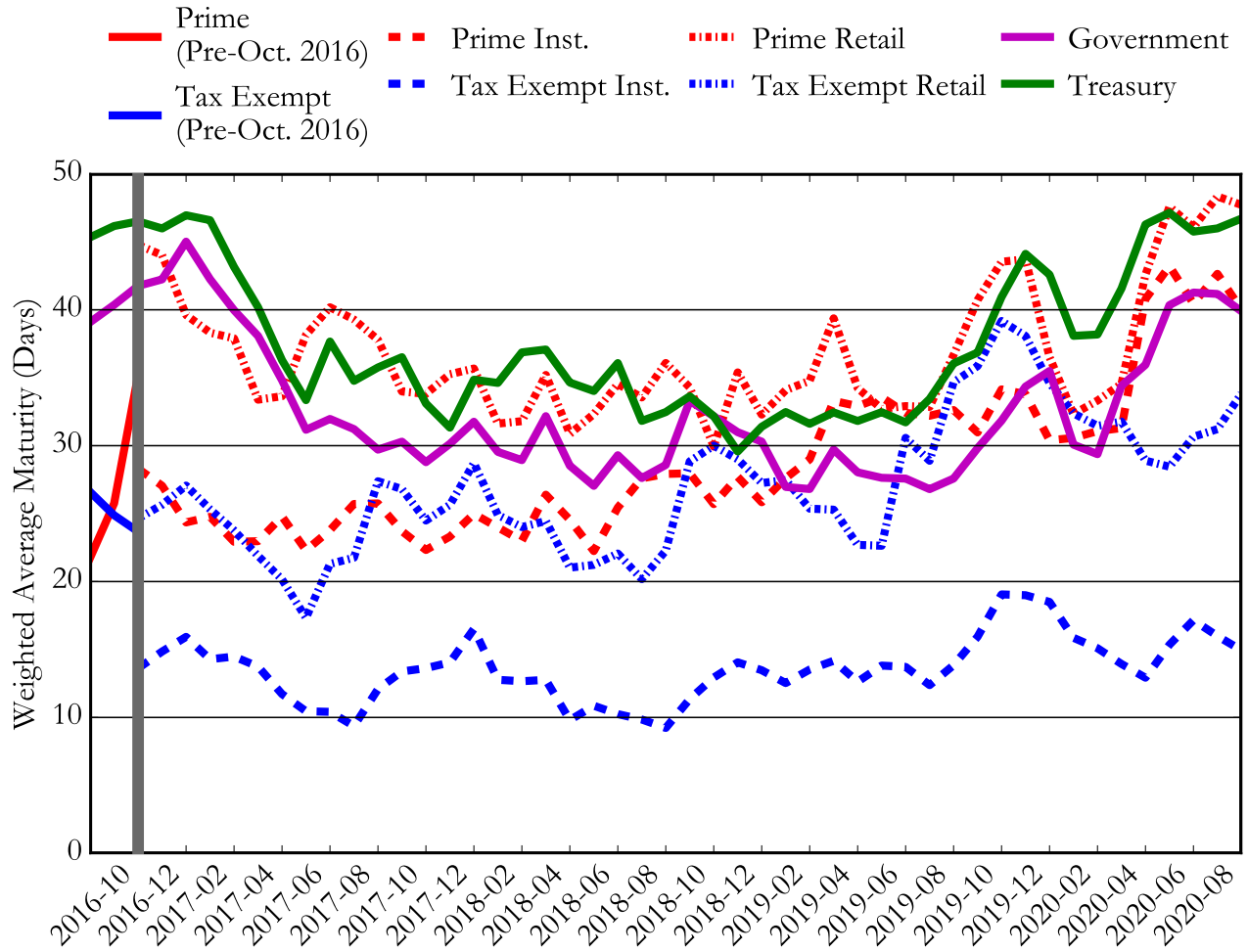
**Figure 5: Weighted Average Life (Days)**

See [Table A5](#) for more details.



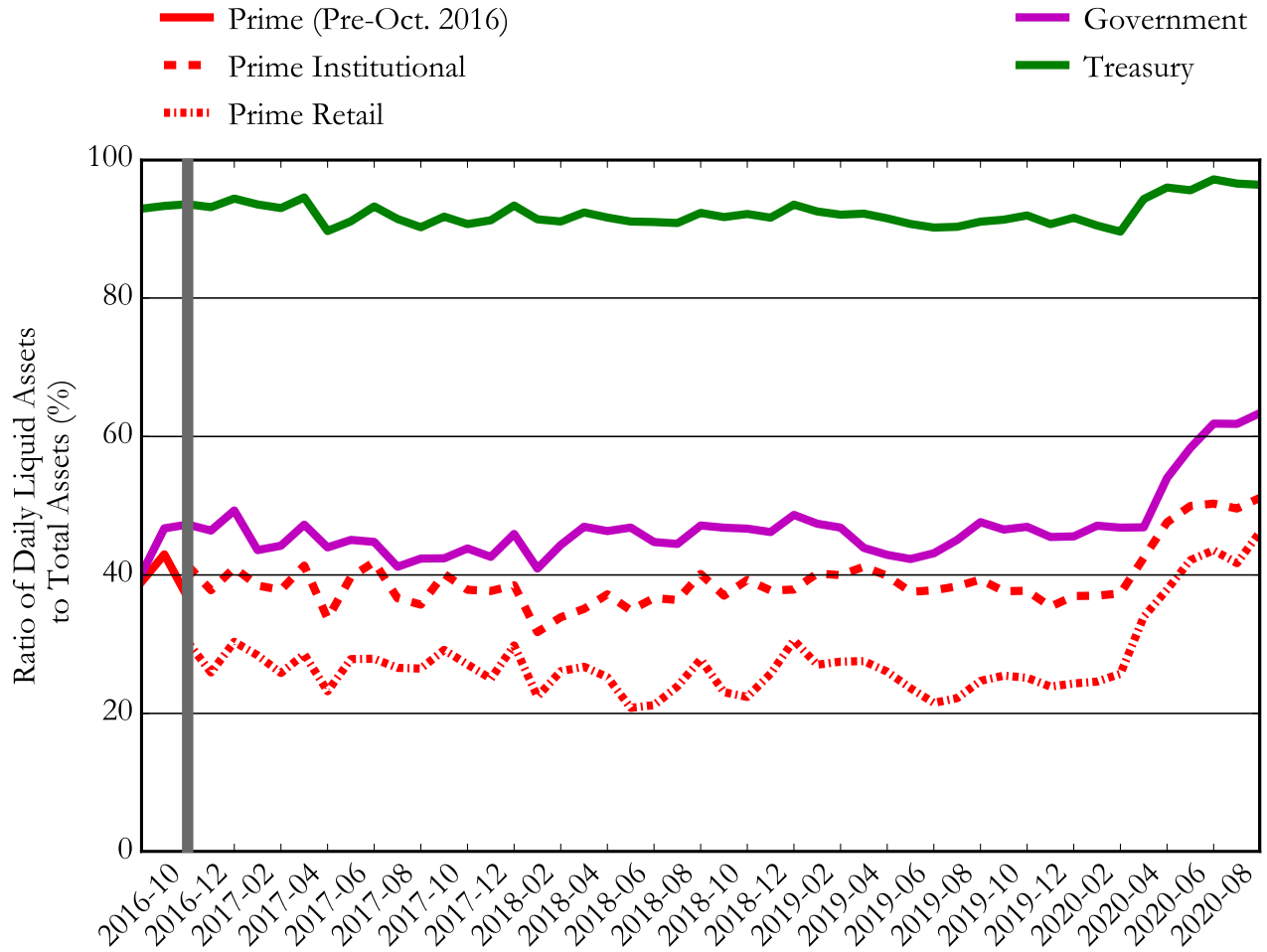
**Figure 6: Weighted Average Maturity (Days)**

See [Table A6](#) for more details.



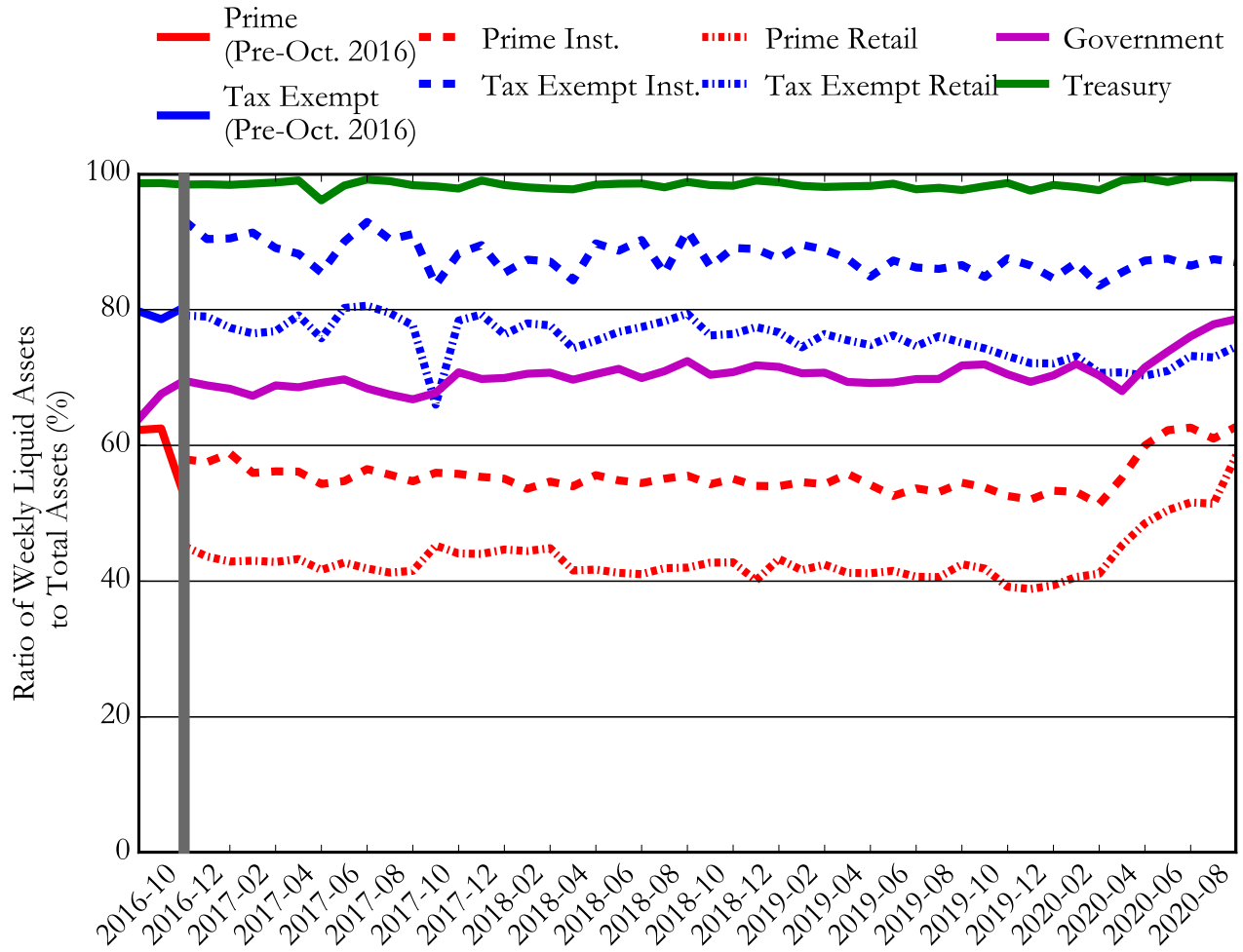
**Figure 7: Daily Liquid Assets to Total Assets (Percent)**

See [Table A7](#) for more details.



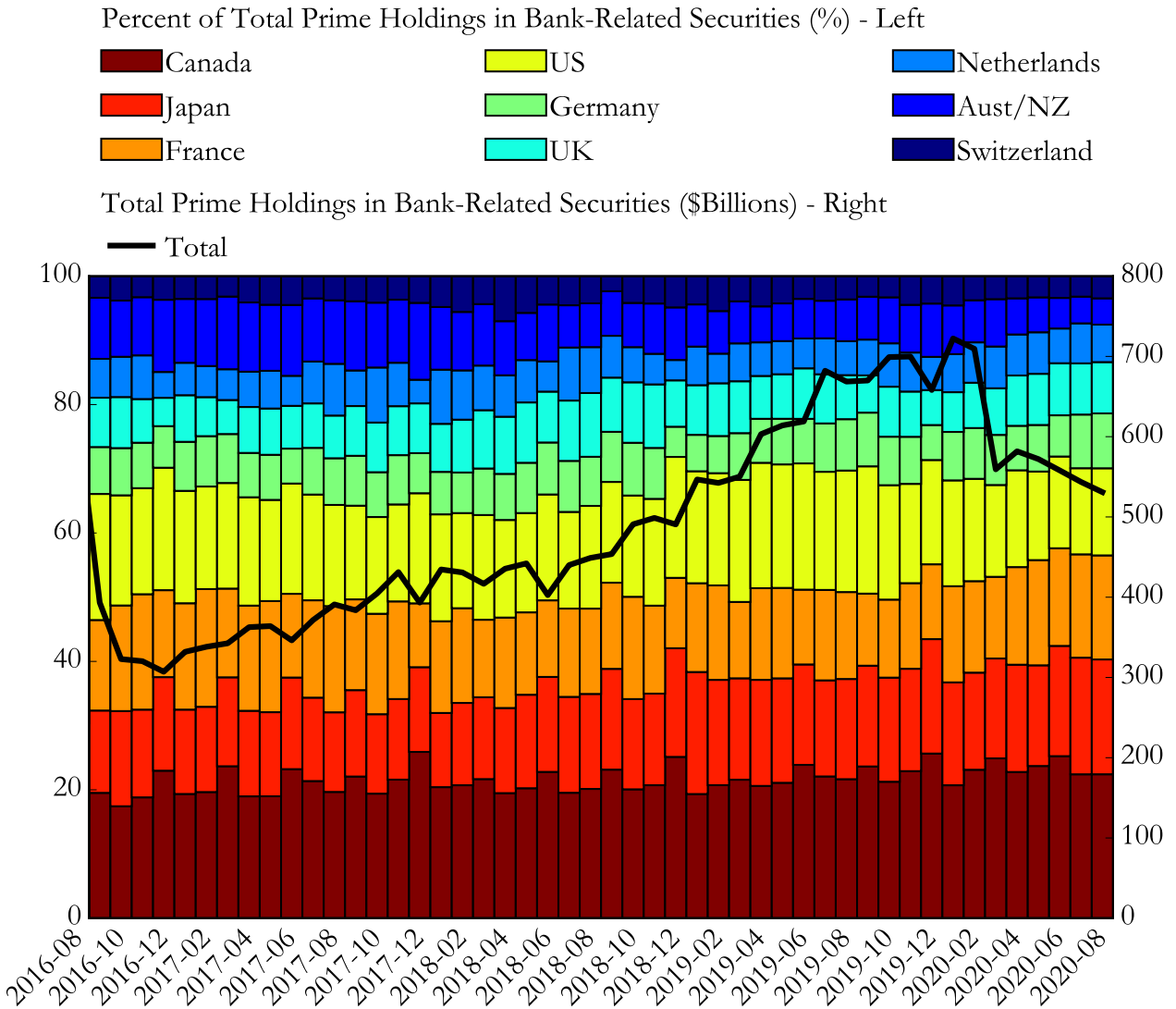
**Figure 8: Weekly Liquid Assets to Total Assets (Percent)**

See [Table A8](#) for more details.



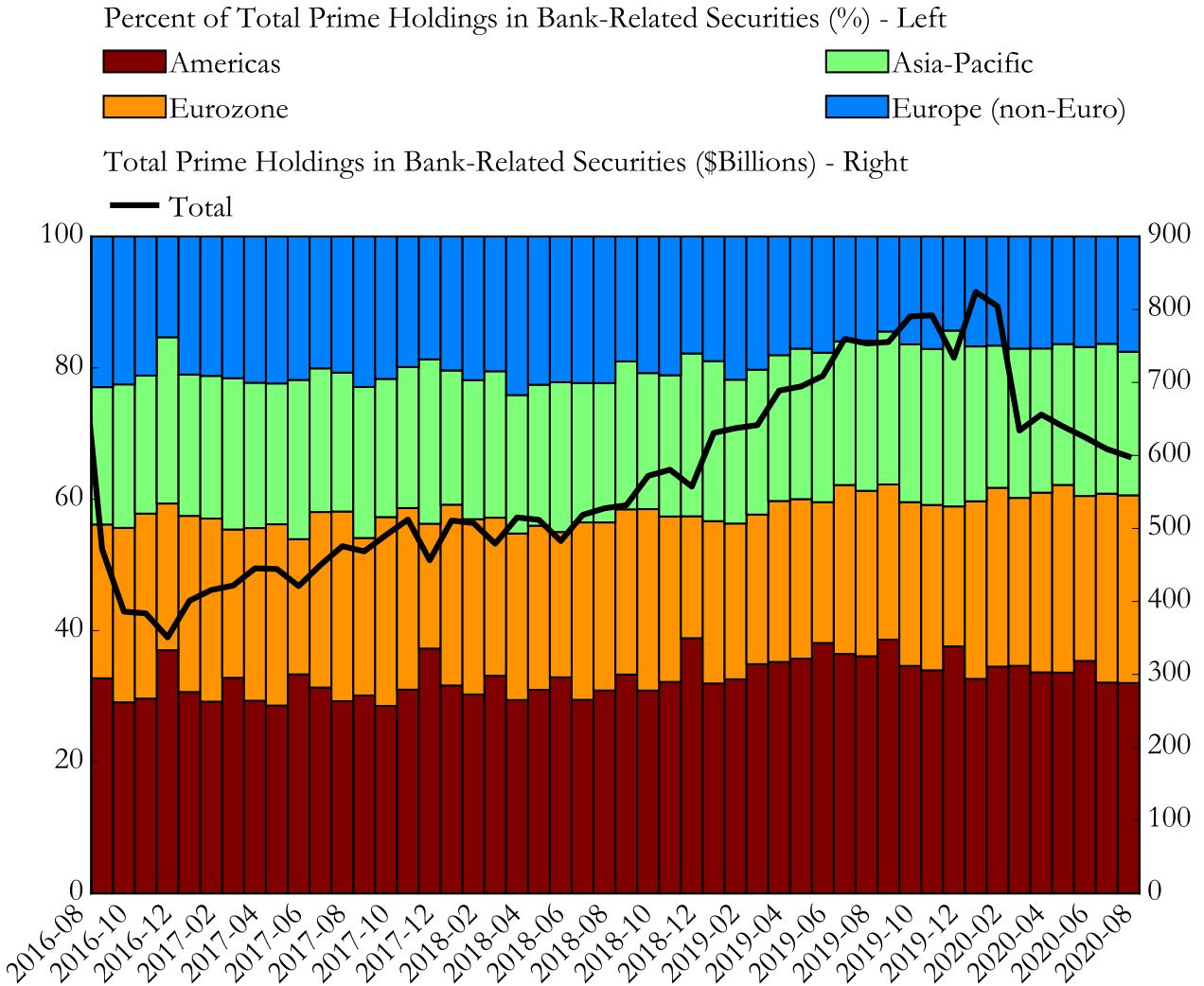
### Figure 9: Prime Holdings of Bank-Related Securities by Country

See [Table A9](#) for more details.



**Figure 10: Prime Holdings of Bank-Related Securities  
by Region**

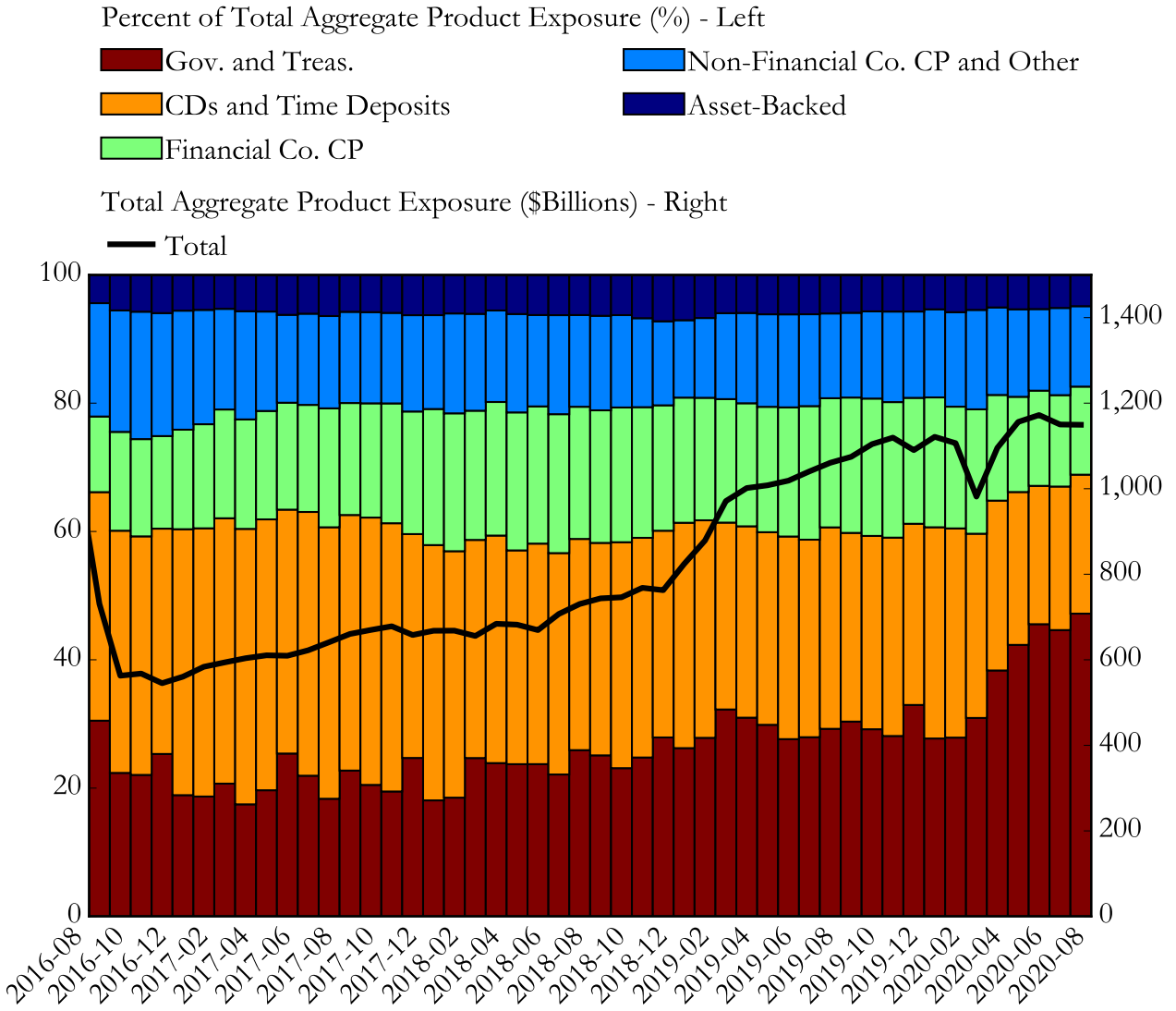
See [Table A10](#) for more details.





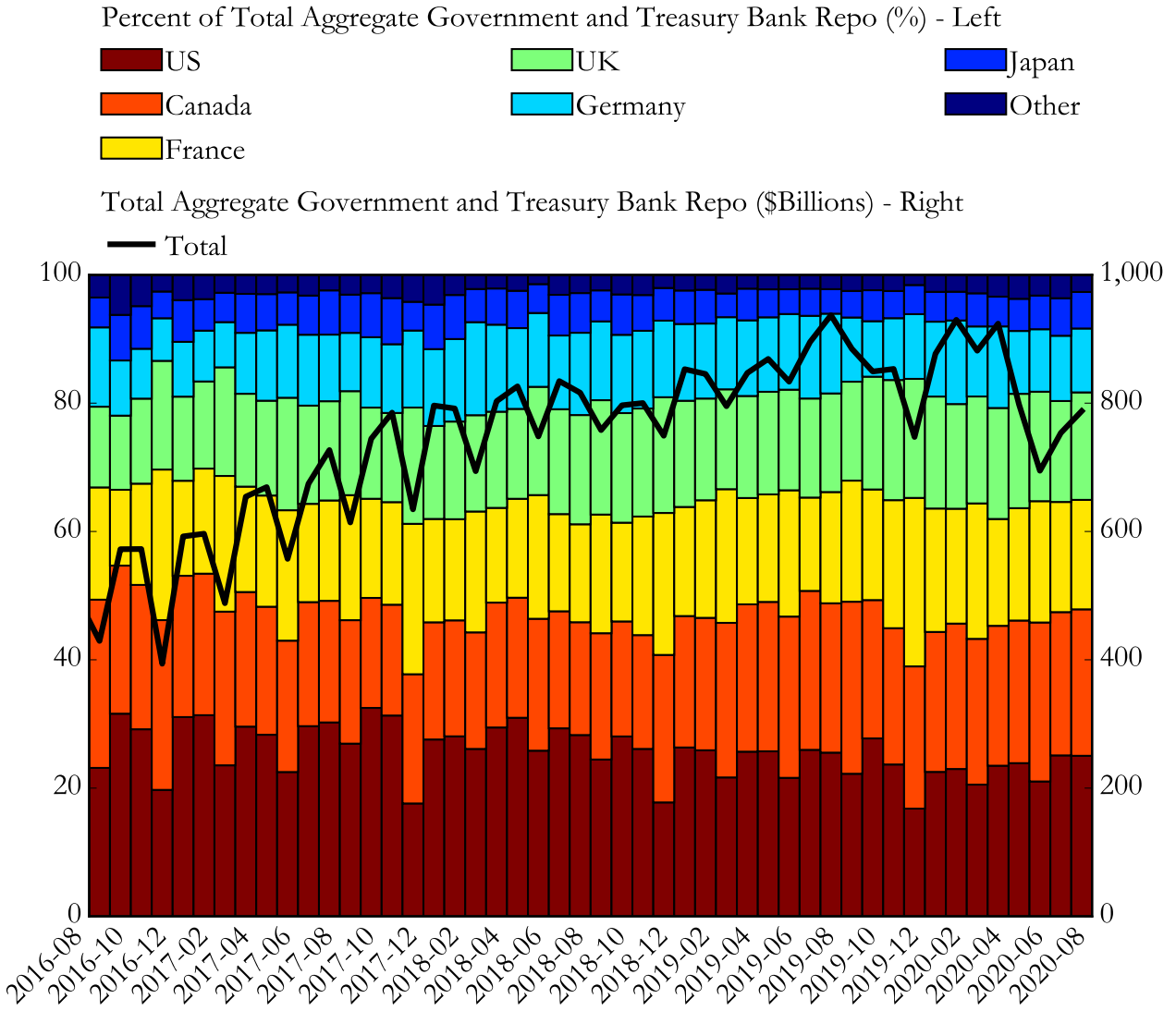
### Figure 11: Prime Money Market Fund Aggregate Product Exposures

See [Table A11](#) for more details.



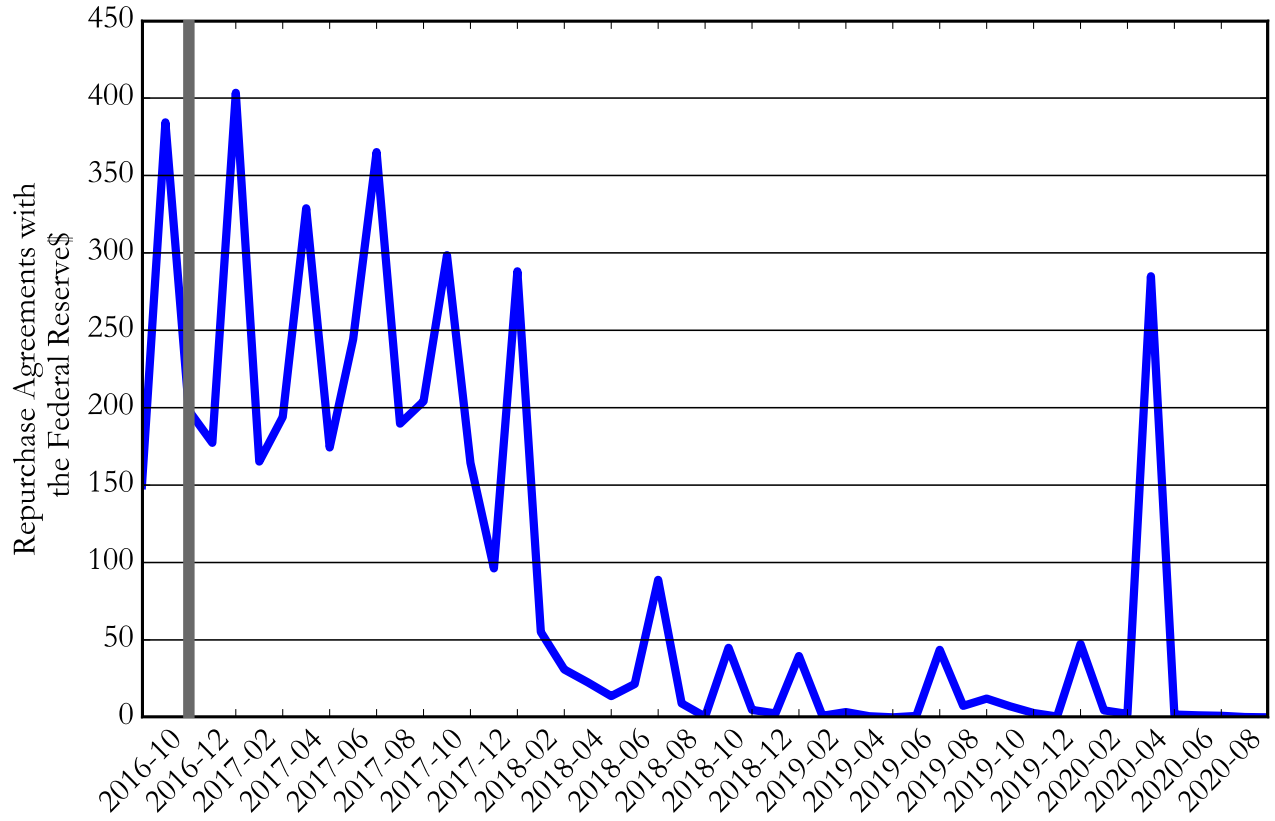
**Figure 12: Government & Treasury Funds Bank Repo Counterparties by Country**

See [Table A12](#) for more details.



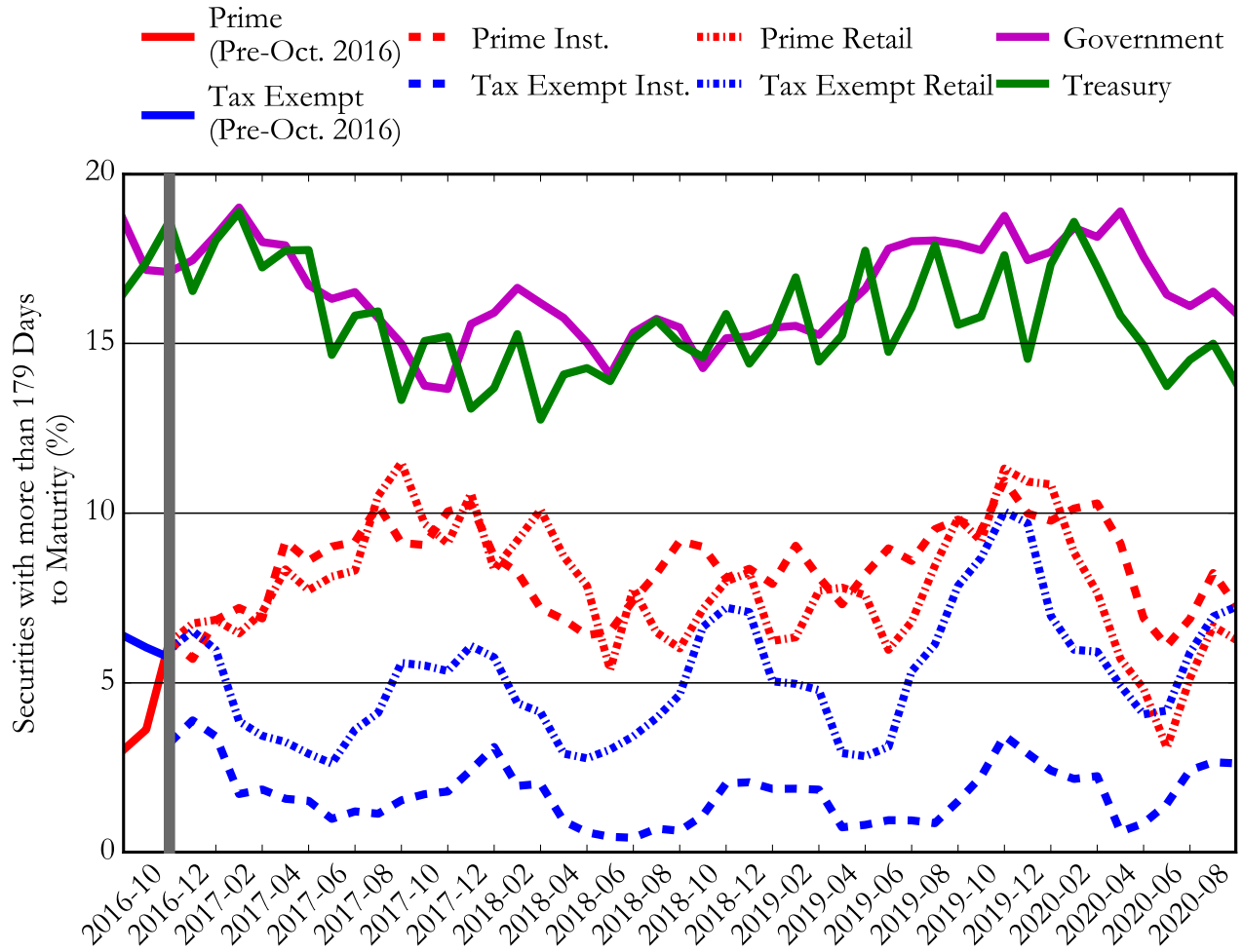
**Figure 13: Money Market Fund Repurchase Agreements with the Federal Reserve (\$ Billions)**

See [Table A13](#) for more details.



**Figure 14: Securities with more than 179 Days to Maturity  
(Percent)**

See [Table A14](#) for more details.



## I Supporting Data

**Table A1: Number of Money Market Funds Reporting**  
**Fund totals do not include feeder funds.**

Month	Prime (Pre-Oct. 2016)	Prime Institutional	Prime Retail	Tax Exempt (Pre-Oct. 2016)	Tax Exempt Institutional	Tax Exempt Retail	Government	Treasury	Total
2016-08	132	-	-	112	-	-	137	62	443
2016-09	115	-	-	109	-	-	148	61	433
2016-10	-	68	29	-	17	87	159	60	420
2016-11	-	57	37	-	11	91	159	60	415
2016-12	-	56	37	-	11	91	159	59	413
2017-01	-	56	37	-	11	90	158	59	411
2017-02	-	56	37	-	11	90	158	59	411
2017-03	-	56	37	-	11	89	159	59	411
2017-04	-	57	37	-	11	89	159	59	412
2017-05	-	56	37	-	11	89	159	59	411
2017-06	-	56	36	-	11	89	159	59	410
2017-07	-	56	36	-	11	85	159	59	406
2017-08	-	56	36	-	11	85	159	59	406
2017-09	-	56	36	-	11	85	159	59	406
2017-10	-	56	36	-	11	80	157	59	399
2017-11	-	48	36	-	11	72	156	59	382
2017-12	-	46	36	-	11	72	154	60	379
2018-01	-	46	36	-	12	72	154	60	380
2018-02	-	46	36	-	11	72	154	60	379
2018-03	-	46	35	-	12	72	154	60	379
2018-04	-	46	35	-	12	72	154	62	381
2018-05	-	46	35	-	12	72	154	62	381
2018-06	-	46	34	-	12	72	155	62	381
2018-07	-	46	34	-	12	72	156	62	382
2018-08	-	46	34	-	12	72	157	62	383
2018-09	-	47	34	-	12	72	156	62	383
2018-10	-	46	34	-	14	70	155	62	381
2018-11	-	46	33	-	14	70	154	62	379
2018-12	-	45	33	-	14	67	151	60	370
2019-01	-	45	33	-	14	67	151	59	369
2019-02	-	46	33	-	14	67	151	59	370
2019-03	-	46	33	-	14	67	151	59	370
2019-04	-	46	34	-	14	67	150	59	370
2019-05	-	47	33	-	14	67	150	59	370
2019-06	-	47	33	-	14	67	150	59	370
2019-07	-	47	33	-	14	67	150	59	370
2019-08	-	47	33	-	14	67	150	59	370
2019-09	-	47	33	-	14	67	149	59	369
2019-10	-	47	33	-	14	67	152	59	372
2019-11	-	47	33	-	14	66	148	57	365
2019-12	-	48	33	-	14	66	148	57	366
2020-01	-	50	32	-	14	66	148	57	367
2020-02	-	50	32	-	14	66	148	57	367
2020-03	-	50	30	-	14	66	146	56	362
2020-04	-	50	30	-	14	66	145	56	361
2020-05	-	50	29	-	14	66	145	56	360
2020-06	-	50	29	-	14	66	144	56	359
2020-07	-	50	29	-	14	66	144	56	359
2020-08	-	48	29	-	14	66	144	56	357

**Table A2: Money Market Fund Net Assets (\$ Billions)**

Month	Prime (Pre-Oct. 2016)	Prime Institutional	Prime Retail	Tax Exempt (Pre-Oct. 2016)	Tax Exempt Institutional	Tax Exempt Retail	Government	Treasury	Total
2016-08	1,033.1	-	-	159.1	-	-	1,192.8	608.3	2,993.3
2016-09	739.9	-	-	135.6	-	-	1,424.3	645.1	2,944.9
2016-10	-	327.6	234.8	-	11.7	123.2	1,572.8	644.6	2,914.7
2016-11	-	315.5	250.4	-	9.9	125.4	1,627.6	646.1	2,974.9
2016-12	-	299.3	251.1	-	8.5	126.0	1,622.3	651.2	2,958.4
2017-01	-	313.0	249.1	-	10.1	125.3	1,587.7	632.1	2,917.3
2017-02	-	337.1	249.9	-	9.3	125.5	1,583.7	625.9	2,931.4
2017-03	-	345.6	253.5	-	10.2	125.1	1,565.1	630.0	2,929.5
2017-04	-	359.1	249.9	-	10.3	122.6	1,552.3	622.9	2,917.1
2017-05	-	362.3	249.0	-	10.4	123.4	1,542.7	632.8	2,920.6
2017-06	-	365.4	250.0	-	10.3	122.8	1,522.2	626.5	2,897.2
2017-07	-	373.6	251.3	-	11.1	124.3	1,518.8	638.0	2,917.1
2017-08	-	385.1	256.6	-	10.5	122.5	1,553.2	660.3	2,988.2
2017-09	-	404.6	259.9	-	10.4	121.6	1,574.3	663.7	3,034.5
2017-10	-	404.4	261.1	-	10.8	121.9	1,570.5	656.3	3,025.0
2017-11	-	415.8	264.0	-	9.8	123.1	1,594.7	672.9	3,080.3
2017-12	-	398.9	267.3	-	8.5	126.0	1,623.8	701.1	3,125.6
2018-01	-	409.1	260.2	-	11.0	130.6	1,576.6	693.6	3,081.1
2018-02	-	405.1	261.5	-	11.0	129.2	1,611.1	704.0	3,121.9
2018-03	-	403.2	259.9	-	10.6	126.5	1,579.3	694.1	3,073.6
2018-04	-	426.6	258.7	-	11.2	124.7	1,600.2	683.2	3,104.6
2018-05	-	424.7	261.3	-	11.5	131.3	1,634.1	687.4	3,150.3
2018-06	-	407.4	269.7	-	11.3	127.8	1,586.8	695.4	3,098.4
2018-07	-	418.8	282.6	-	11.5	123.0	1,586.5	691.2	3,113.6
2018-08	-	435.0	297.6	-	11.7	123.4	1,581.3	694.6	3,143.6
2018-09	-	442.8	303.6	-	12.1	123.1	1,572.2	701.9	3,155.7
2018-10	-	433.8	309.5	-	12.0	126.1	1,578.5	703.9	3,163.8
2018-11	-	449.3	322.4	-	12.6	130.6	1,602.3	735.9	3,253.1
2018-12	-	420.9	343.2	-	12.4	137.2	1,634.0	750.0	3,297.7
2019-01	-	458.0	356.9	-	14.6	131.2	1,636.2	732.3	3,329.2
2019-02	-	501.9	371.0	-	15.0	128.7	1,659.3	730.3	3,406.2
2019-03	-	591.4	380.7	-	15.7	129.3	1,637.9	739.0	3,494.0
2019-04	-	616.7	383.2	-	13.9	124.7	1,629.0	727.2	3,494.7
2019-05	-	616.1	392.7	-	13.6	127.1	1,671.2	752.2	3,572.9
2019-06	-	616.4	402.0	-	14.6	126.5	1,689.4	765.8	3,614.7
2019-07	-	626.6	414.1	-	15.0	125.9	1,723.4	785.3	3,690.3
2019-08	-	630.0	421.4	-	15.8	125.0	1,776.1	798.4	3,766.7
2019-09	-	631.3	431.8	-	14.7	124.3	1,818.4	829.0	3,849.5
2019-10	-	656.0	445.5	-	15.4	127.2	1,858.5	835.5	3,938.1
2019-11	-	666.1	455.5	-	16.6	127.2	1,868.2	850.0	3,983.6
2019-12	-	634.5	460.6	-	15.2	127.6	1,913.1	869.9	4,020.9
2020-01	-	655.1	468.1	-	16.0	125.8	1,891.8	859.8	4,016.6
2020-02	-	635.6	473.7	-	15.7	125.3	1,930.1	853.5	4,033.9
2020-03	-	558.9	425.9	-	15.3	116.7	2,425.2	1,196.7	4,738.7
2020-04	-	651.2	438.8	-	17.5	123.6	2,651.7	1,317.5	5,200.3
2020-05	-	686.8	453.8	-	19.5	120.6	2,655.7	1,294.9	5,231.3
2020-06	-	706.9	455.0	-	19.2	117.4	2,561.5	1,244.0	5,104.0
2020-07	-	701.6	443.9	-	18.5	110.7	2,522.6	1,240.3	5,037.6
2020-08	-	704.7	433.7	-	20.0	108.6	2,507.7	1,205.9	4,980.6

**Table A3: Asset-Weighted Seven-Day Gross Yield (Percent)**

Month	Prime (Pre-Oct. 2016)	Prime Institutional	Prime Retail	Tax Exempt (Pre-Oct. 2016)	Tax Exempt Institutional	Tax Exempt Retail	Government	Treasury
2016-08	0.57	-	-	0.60	-	-	0.43	0.38
2016-09	0.63	-	-	0.81	-	-	0.44	0.37
2016-10	-	0.63	0.80	-	0.63	0.70	0.44	0.39
2016-11	-	0.63	0.81	-	0.59	0.62	0.44	0.42
2016-12	-	0.79	0.93	-	0.76	0.77	0.58	0.53
2017-01	-	0.84	0.98	-	0.69	0.72	0.61	0.56
2017-02	-	0.84	0.99	-	0.67	0.71	0.62	0.58
2017-03	-	0.98	1.08	-	0.86	0.87	0.76	0.74
2017-04	-	1.02	1.14	-	0.92	0.94	0.80	0.78
2017-05	-	1.03	1.15	-	0.81	0.84	0.85	0.84
2017-06	-	1.20	1.26	-	0.91	0.93	1.01	1.00
2017-07	-	1.24	1.30	-	0.84	0.89	1.05	1.07
2017-08	-	1.25	1.31	-	0.83	0.86	1.07	1.05
2017-09	-	1.25	1.31	-	0.94	0.96	1.08	1.07
2017-10	-	1.26	1.33	-	0.95	0.97	1.10	1.10
2017-11	-	1.29	1.36	-	0.98	1.00	1.14	1.15
2017-12	-	1.48	1.56	-	1.61	1.59	1.33	1.32
2018-01	-	1.55	1.61	-	1.14	1.18	1.38	1.37
2018-02	-	1.60	1.68	-	1.14	1.16	1.44	1.47
2018-03	-	1.83	1.89	-	1.48	1.46	1.69	1.69
2018-04	-	1.92	2.01	-	1.72	1.71	1.75	1.74
2018-05	-	1.97	2.08	-	1.16	1.24	1.80	1.80
2018-06	-	2.11	2.21	-	1.53	1.53	1.95	1.92
2018-07	-	2.14	2.22	-	1.08	1.10	1.97	1.95
2018-08	-	2.15	2.24	-	1.57	1.59	2.01	2.01
2018-09	-	2.23	2.30	-	1.59	1.59	2.11	2.12
2018-10	-	2.35	2.39	-	1.64	1.66	2.22	2.23
2018-11	-	2.39	2.48	-	1.74	1.74	2.28	2.29
2018-12	-	2.58	2.62	-	1.75	1.76	2.45	2.44
2019-01	-	2.61	2.67	-	1.41	1.45	2.45	2.44
2019-02	-	2.62	2.66	-	1.76	1.78	2.47	2.45
2019-03	-	2.59	2.65	-	1.53	1.59	2.49	2.49
2019-04	-	2.58	2.63	-	2.23	2.20	2.49	2.48
2019-05	-	2.54	2.58	-	1.58	1.52	2.45	2.43
2019-06	-	2.50	2.55	-	1.88	1.88	2.43	2.37
2019-07	-	2.44	2.47	-	1.47	1.48	2.39	2.30
2019-08	-	2.26	2.30	-	1.42	1.42	2.18	2.14
2019-09	-	2.13	2.18	-	1.58	1.56	2.03	2.03
2019-10	-	1.99	2.06	-	1.22	1.26	1.89	1.86
2019-11	-	1.83	1.91	-	1.14	1.17	1.71	1.71
2019-12	-	1.80	1.88	-	1.58	1.54	1.67	1.66
2020-01	-	1.83	1.83	-	0.97	1.00	1.64	1.63
2020-02	-	1.73	1.79	-	1.17	1.20	1.64	1.63
2020-03	-	0.94	1.15	-	3.36	3.35	0.55	0.57
2020-04	-	0.59	0.85	-	0.30	0.51	0.39	0.37
2020-05	-	0.40	0.53	-	0.21	0.42	0.29	0.28
2020-06	-	0.33	0.42	-	0.21	0.33	0.26	0.26
2020-07	-	0.27	0.31	-	0.23	0.33	0.23	0.24
2020-08	-	0.22	0.25	-	0.12	0.22	0.19	0.20

**Table A4: Asset-Weighted Seven-Day Net Yield (Percent)**

Month	Prime (Pre-Oct. 2016)	Prime Institutional	Prime Retail	Tax Exempt (Pre-Oct. 2016)	Tax Exempt Institutional	Tax Exempt Retail	Government	Treasury
2016-08	0.35	-	-	0.23	-	-	0.18	0.16
2016-09	0.40	-	-	0.43	-	-	0.21	0.16
2016-10	-	0.52	0.44	-	0.53	0.31	0.21	0.17
2016-11	-	0.56	0.43	-	0.49	0.24	0.21	0.20
2016-12	-	0.71	0.54	-	0.65	0.37	0.32	0.29
2017-01	-	0.76	0.58	-	0.58	0.33	0.35	0.32
2017-02	-	0.76	0.60	-	0.56	0.31	0.35	0.33
2017-03	-	0.91	0.69	-	0.76	0.49	0.51	0.49
2017-04	-	0.95	0.76	-	0.82	0.55	0.53	0.53
2017-05	-	0.96	0.77	-	0.70	0.46	0.57	0.59
2017-06	-	1.13	0.88	-	0.80	0.56	0.73	0.75
2017-07	-	1.16	0.93	-	0.73	0.52	0.77	0.82
2017-08	-	1.17	0.94	-	0.71	0.49	0.79	0.81
2017-09	-	1.17	0.94	-	0.83	0.58	0.81	0.82
2017-10	-	1.18	0.97	-	0.82	0.62	0.82	0.85
2017-11	-	1.21	1.01	-	0.87	0.66	0.86	0.91
2017-12	-	1.40	1.20	-	1.45	1.23	1.05	1.08
2018-01	-	1.46	1.27	-	1.01	0.85	1.10	1.13
2018-02	-	1.51	1.34	-	1.01	0.82	1.15	1.23
2018-03	-	1.75	1.57	-	1.35	1.12	1.40	1.45
2018-04	-	1.85	1.70	-	1.58	1.39	1.46	1.50
2018-05	-	1.89	1.78	-	1.03	0.93	1.52	1.56
2018-06	-	2.03	1.91	-	1.39	1.22	1.67	1.69
2018-07	-	2.05	1.93	-	0.94	0.79	1.69	1.72
2018-08	-	2.06	1.95	-	1.44	1.28	1.72	1.78
2018-09	-	2.14	2.02	-	1.45	1.28	1.83	1.89
2018-10	-	2.25	2.12	-	1.51	1.36	1.94	2.00
2018-11	-	2.30	2.20	-	1.62	1.44	1.99	2.05
2018-12	-	2.49	2.35	-	1.63	1.46	2.16	2.21
2019-01	-	2.52	2.40	-	1.29	1.16	2.17	2.21
2019-02	-	2.52	2.39	-	1.63	1.49	2.18	2.23
2019-03	-	2.52	2.39	-	1.41	1.31	2.21	2.26
2019-04	-	2.50	2.37	-	2.10	1.92	2.21	2.25
2019-05	-	2.46	2.32	-	1.45	1.24	2.17	2.21
2019-06	-	2.42	2.28	-	1.75	1.60	2.15	2.15
2019-07	-	2.36	2.21	-	1.34	1.21	2.10	2.07
2019-08	-	2.18	2.05	-	1.30	1.14	1.91	1.91
2019-09	-	2.05	1.92	-	1.45	1.28	1.76	1.80
2019-10	-	1.90	1.80	-	1.10	0.98	1.62	1.64
2019-11	-	1.75	1.65	-	1.01	0.90	1.44	1.48
2019-12	-	1.72	1.64	-	1.44	1.26	1.40	1.43
2020-01	-	1.74	1.58	-	0.84	0.73	1.38	1.41
2020-02	-	1.65	1.54	-	1.05	0.93	1.38	1.40
2020-03	-	0.87	0.89	-	3.21	3.07	0.32	0.35
2020-04	-	0.53	0.58	-	0.16	0.25	0.17	0.17
2020-05	-	0.33	0.28	-	0.08	0.16	0.09	0.09
2020-06	-	0.26	0.19	-	0.09	0.10	0.07	0.07
2020-07	-	0.19	0.09	-	0.11	0.10	0.06	0.06
2020-08	-	0.15	0.06	-	0.04	0.03	0.03	0.03



**Table A5: Weighted Average Life (Days)**

Month	Prime (Pre-Oct. 2016)	Prime Institutional	Prime Retail	Tax Exempt (Pre-Oct. 2016)	Tax Exempt Institutional	Tax Exempt Retail	Government	Treasury
2016-08	36.5	-	-	29.0	-	-	97.4	99.7
2016-09	42.9	-	-	27.5	-	-	93.4	97.3
2016-10	-	52.8	67.0	-	14.1	27.0	93.1	98.0
2016-11	-	55.0	71.5	-	15.6	28.1	93.8	96.8
2016-12	-	54.1	70.2	-	16.9	29.3	95.1	98.6
2017-01	-	53.8	68.6	-	15.2	27.9	94.6	100.1
2017-02	-	50.7	69.2	-	15.2	26.8	91.3	98.2
2017-03	-	53.4	68.1	-	14.3	24.5	88.7	95.5
2017-04	-	53.7	66.0	-	12.4	22.9	84.8	89.5
2017-05	-	52.8	70.8	-	10.9	20.3	82.0	87.1
2017-06	-	57.1	76.0	-	11.1	24.1	84.4	94.6
2017-07	-	57.7	76.1	-	10.0	24.7	86.1	89.6
2017-08	-	56.5	75.3	-	12.7	30.5	85.2	90.2
2017-09	-	55.3	72.1	-	14.1	29.4	84.0	90.6
2017-10	-	57.2	70.2	-	14.3	27.1	80.3	86.5
2017-11	-	58.2	74.3	-	14.6	28.1	86.2	82.8
2017-12	-	57.8	69.9	-	17.2	30.8	89.6	86.7
2018-01	-	56.7	65.8	-	13.3	27.1	91.4	88.9
2018-02	-	53.0	69.0	-	13.1	26.2	90.4	89.3
2018-03	-	55.2	72.5	-	13.4	26.6	90.2	93.3
2018-04	-	51.3	65.7	-	10.4	24.0	86.3	90.8
2018-05	-	49.8	65.1	-	11.2	23.9	82.1	92.1
2018-06	-	53.0	66.6	-	10.5	25.1	84.9	94.0
2018-07	-	54.8	62.5	-	10.7	24.0	83.3	90.5
2018-08	-	57.1	64.2	-	9.8	25.6	84.2	93.5
2018-09	-	59.0	66.8	-	11.7	32.1	86.8	93.5
2018-10	-	56.0	65.0	-	13.3	32.6	87.8	91.9
2018-11	-	59.3	73.5	-	14.3	31.2	86.0	89.2
2018-12	-	58.1	62.9	-	13.9	29.2	87.2	90.9
2019-01	-	58.4	62.0	-	12.9	29.6	85.7	93.1
2019-02	-	59.0	64.0	-	14.0	27.9	88.2	92.4
2019-03	-	56.9	67.0	-	14.6	27.6	93.0	92.5
2019-04	-	56.4	62.5	-	12.9	25.1	90.9	92.8
2019-05	-	60.1	63.1	-	14.1	25.0	93.3	91.2
2019-06	-	58.2	62.8	-	14.1	32.5	95.5	91.1
2019-07	-	58.8	62.9	-	12.8	31.4	94.7	93.7
2019-08	-	61.5	66.9	-	14.0	37.2	97.0	97.0
2019-09	-	62.1	72.8	-	16.2	38.5	98.1	95.2
2019-10	-	65.7	76.7	-	19.5	41.7	97.7	98.7
2019-11	-	64.7	78.2	-	19.2	40.5	97.6	99.6
2019-12	-	62.1	70.2	-	18.8	36.6	96.1	97.7
2020-01	-	63.4	64.1	-	16.3	34.7	93.0	95.0
2020-02	-	64.4	63.0	-	15.7	33.8	91.9	97.4
2020-03	-	57.9	59.8	-	14.2	34.2	98.3	92.4
2020-04	-	58.0	60.6	-	13.4	31.2	100.1	96.4
2020-05	-	57.2	60.0	-	15.9	30.6	102.3	98.0
2020-06	-	57.6	62.0	-	17.7	32.9	102.9	97.1
2020-07	-	62.8	67.8	-	16.8	33.4	101.7	96.9
2020-08	-	59.2	66.5	-	15.5	35.6	99.7	97.1

**Table A6: Weighted Average Maturity (Days)**

Month	Prime (Pre-Oct. 2016)	Prime Institutional	Prime Retail	Tax Exempt (Pre-Oct. 2016)	Tax Exempt Institutional	Tax Exempt Retail	Government	Treasury
2016-08	21.8	-	-	26.6	-	-	39.1	45.3
2016-09	25.8	-	-	24.9	-	-	40.4	46.2
2016-10	-	28.3	44.8	-	13.6	24.6	41.8	46.5
2016-11	-	27.1	44.0	-	14.8	25.7	42.2	46.0
2016-12	-	24.4	39.6	-	15.9	27.1	45.0	47.0
2017-01	-	24.8	38.3	-	14.3	25.3	42.3	46.6
2017-02	-	22.9	37.9	-	14.5	23.8	40.0	43.1
2017-03	-	23.0	33.4	-	13.7	21.9	38.1	40.2
2017-04	-	24.8	33.6	-	11.7	20.2	34.8	36.3
2017-05	-	22.3	38.2	-	10.5	17.3	31.2	33.3
2017-06	-	23.8	40.2	-	10.4	21.3	32.0	37.7
2017-07	-	25.7	39.3	-	9.4	21.8	31.2	34.8
2017-08	-	25.7	37.8	-	12.1	27.4	29.7	35.8
2017-09	-	23.7	34.0	-	13.4	26.8	30.3	36.5
2017-10	-	22.3	33.8	-	13.6	24.5	28.8	33.1
2017-11	-	23.3	35.3	-	14.1	25.7	30.1	31.3
2017-12	-	25.0	35.7	-	16.5	28.7	31.8	34.9
2018-01	-	24.0	31.6	-	12.8	24.9	29.5	34.6
2018-02	-	23.0	31.8	-	12.7	24.0	28.9	36.9
2018-03	-	26.4	35.2	-	12.8	24.5	32.2	37.1
2018-04	-	24.5	30.9	-	9.8	21.0	28.5	34.6
2018-05	-	22.2	32.3	-	10.9	21.2	27.0	34.0
2018-06	-	25.4	34.5	-	10.2	22.1	29.3	36.1
2018-07	-	27.6	33.5	-	9.8	20.2	27.6	31.8
2018-08	-	27.9	36.1	-	9.2	22.3	28.6	32.5
2018-09	-	28.0	34.3	-	11.4	28.8	33.3	33.6
2018-10	-	25.7	29.9	-	12.9	30.0	32.2	32.2
2018-11	-	27.7	35.4	-	14.1	29.0	31.0	29.6
2018-12	-	25.8	32.3	-	13.5	27.2	30.3	31.4
2019-01	-	27.6	34.1	-	12.5	27.5	27.0	32.5
2019-02	-	29.0	34.8	-	13.5	25.4	26.8	31.6
2019-03	-	33.3	39.4	-	14.2	25.3	29.7	32.4
2019-04	-	32.9	34.2	-	12.6	22.7	28.0	31.8
2019-05	-	33.6	32.7	-	13.8	22.6	27.6	32.5
2019-06	-	32.4	32.9	-	13.7	30.6	27.6	31.7
2019-07	-	32.2	32.9	-	12.4	28.9	26.8	33.4
2019-08	-	32.6	36.7	-	13.8	34.7	27.6	36.1
2019-09	-	31.0	40.7	-	15.9	35.9	29.8	36.9
2019-10	-	34.1	43.5	-	19.1	39.2	31.8	40.9
2019-11	-	33.8	43.7	-	19.0	38.1	34.4	44.1
2019-12	-	30.4	36.5	-	18.5	34.6	35.5	42.6
2020-01	-	30.6	32.3	-	15.9	32.4	30.1	38.1
2020-02	-	31.1	33.3	-	15.1	31.5	29.4	38.2
2020-03	-	31.3	34.5	-	13.9	31.8	34.4	41.6
2020-04	-	40.8	42.6	-	12.9	28.9	36.0	46.3
2020-05	-	43.2	47.6	-	15.4	28.4	40.3	47.1
2020-06	-	40.4	46.1	-	17.2	30.7	41.3	45.8
2020-07	-	42.6	48.3	-	16.0	31.2	41.2	46.0
2020-08	-	40.0	47.7	-	14.9	33.8	39.9	46.7

**Table A7: Ratio of Daily Liquid Assets to Total Assets  
(Percent)**

Month	Prime (Pre-Oct. 2016)	Prime Institutional	Prime Retail	Government	Treasury
2016-08	38.9	-	-	40.0	92.9
2016-09	43.0	-	-	46.7	93.3
2016-10	-	41.4	30.3	47.3	93.5
2016-11	-	37.8	25.9	46.4	93.1
2016-12	-	41.0	30.3	49.3	94.4
2017-01	-	38.5	28.4	43.6	93.5
2017-02	-	37.8	25.8	44.2	93.0
2017-03	-	41.4	28.6	47.3	94.5
2017-04	-	33.7	23.2	44.0	89.7
2017-05	-	39.7	27.8	45.1	91.1
2017-06	-	41.9	27.9	44.8	93.2
2017-07	-	36.6	26.6	41.2	91.4
2017-08	-	35.7	26.5	42.4	90.2
2017-09	-	40.1	29.2	42.4	91.8
2017-10	-	37.9	27.1	43.8	90.7
2017-11	-	37.7	25.0	42.6	91.2
2017-12	-	38.5	29.8	45.9	93.4
2018-01	-	31.7	22.4	40.9	91.4
2018-02	-	33.9	26.1	44.3	91.1
2018-03	-	35.1	26.7	47.0	92.4
2018-04	-	37.2	25.2	46.3	91.6
2018-05	-	34.9	20.8	46.8	91.0
2018-06	-	36.7	21.2	44.8	91.0
2018-07	-	36.4	23.9	44.5	90.8
2018-08	-	40.1	27.8	47.1	92.3
2018-09	-	37.0	23.1	46.8	91.7
2018-10	-	39.3	22.4	46.7	92.1
2018-11	-	37.8	25.7	46.2	91.6
2018-12	-	37.9	30.6	48.7	93.5
2019-01	-	40.2	27.0	47.4	92.5
2019-02	-	40.0	27.5	46.8	92.0
2019-03	-	41.2	27.6	43.9	92.2
2019-04	-	39.9	26.0	42.9	91.5
2019-05	-	37.6	23.6	42.3	90.7
2019-06	-	37.8	21.5	43.1	90.2
2019-07	-	38.4	22.2	45.1	90.3
2019-08	-	39.3	24.7	47.6	91.0
2019-09	-	37.6	25.5	46.6	91.3
2019-10	-	37.7	25.1	47.0	91.9
2019-11	-	35.4	23.9	45.5	90.7
2019-12	-	37.0	24.3	45.6	91.6
2020-01	-	37.0	24.6	47.1	90.5
2020-02	-	37.3	25.7	46.8	89.6
2020-03	-	42.5	33.9	46.9	94.3
2020-04	-	47.6	37.9	54.0	96.0
2020-05	-	50.0	42.1	58.3	95.6
2020-06	-	50.3	43.6	61.9	97.1
2020-07	-	49.6	41.7	61.8	96.5
2020-08	-	51.2	46.3	63.4	96.4

**Table A8: Ratio of Weekly Liquid Assets to Total Assets  
(Percent)**

Month	Prime (Pre-Oct. 2016)	Prime Institutional	Prime Retail	Tax Exempt (Pre-Oct. 2016)	Tax Exempt Institutional	Tax Exempt Retail	Government	Treasury
2016-08	62.3	-	-	79.8	-	-	63.8	98.6
2016-09	62.5	-	-	78.6	-	-	67.6	98.6
2016-10	-	58.0	45.2	-	93.1	79.1	69.5	98.4
2016-11	-	57.5	43.6	-	90.4	79.0	68.8	98.5
2016-12	-	58.8	42.9	-	90.5	77.3	68.3	98.4
2017-01	-	56.0	43.0	-	91.3	76.5	67.3	98.6
2017-02	-	56.2	42.8	-	89.1	76.8	68.8	98.7
2017-03	-	56.1	43.3	-	88.2	79.2	68.6	99.0
2017-04	-	54.3	41.6	-	85.5	75.8	69.2	96.1
2017-05	-	54.7	42.7	-	90.0	80.2	69.7	98.3
2017-06	-	56.5	41.9	-	92.9	80.6	68.4	99.2
2017-07	-	55.7	41.3	-	90.3	79.5	67.5	98.9
2017-08	-	54.7	41.5	-	91.1	77.7	66.8	98.3
2017-09	-	56.0	45.2	-	83.6	66.0	67.7	98.2
2017-10	-	55.8	44.1	-	88.3	78.4	70.8	97.8
2017-11	-	55.4	44.0	-	89.5	79.3	69.8	99.0
2017-12	-	55.1	44.7	-	85.4	76.3	69.9	98.4
2018-01	-	53.6	44.4	-	87.4	78.0	70.5	98.0
2018-02	-	54.7	44.9	-	87.1	77.7	70.7	97.8
2018-03	-	54.0	41.6	-	84.3	74.3	69.7	97.7
2018-04	-	55.6	41.7	-	89.8	75.4	70.5	98.4
2018-05	-	54.8	41.2	-	88.7	76.7	71.3	98.5
2018-06	-	54.4	41.0	-	90.3	77.4	69.9	98.6
2018-07	-	55.1	41.9	-	85.4	78.3	70.9	98.0
2018-08	-	55.5	42.0	-	91.6	79.4	72.4	98.8
2018-09	-	54.3	42.7	-	86.4	76.2	70.4	98.3
2018-10	-	55.1	42.8	-	89.1	76.4	70.8	98.2
2018-11	-	54.0	40.1	-	88.9	77.4	71.8	99.0
2018-12	-	54.0	43.3	-	87.5	76.7	71.6	98.8
2019-01	-	54.6	41.6	-	89.6	74.4	70.6	98.2
2019-02	-	54.3	42.4	-	88.8	76.4	70.7	98.1
2019-03	-	55.8	41.2	-	87.5	75.5	69.3	98.2
2019-04	-	54.2	41.2	-	84.9	74.8	69.2	98.2
2019-05	-	52.6	41.5	-	87.2	76.2	69.3	98.6
2019-06	-	53.7	40.6	-	86.2	74.6	69.8	97.7
2019-07	-	53.1	40.6	-	86.0	76.1	69.8	97.9
2019-08	-	54.5	42.5	-	86.6	75.1	71.8	97.6
2019-09	-	53.8	41.9	-	84.8	74.3	71.9	98.2
2019-10	-	52.5	39.2	-	87.5	73.2	70.5	98.6
2019-11	-	52.0	38.8	-	86.5	72.1	69.3	97.5
2019-12	-	53.3	39.4	-	84.6	72.1	70.3	98.4
2020-01	-	53.1	40.6	-	86.9	73.1	72.0	98.1
2020-02	-	51.3	41.1	-	83.5	70.7	70.3	97.6
2020-03	-	55.2	45.3	-	85.5	70.8	68.0	99.0
2020-04	-	60.0	48.5	-	87.2	70.3	71.5	99.4
2020-05	-	62.2	50.5	-	87.5	71.0	73.8	98.8
2020-06	-	62.6	51.6	-	86.5	73.2	76.1	99.5
2020-07	-	61.0	51.4	-	87.4	73.0	77.8	99.5
2020-08	-	62.8	58.6	-	87.0	74.6	78.6	99.4

**Table A9: Prime Holdings of Bank-Related Securities  
by Country (\$ Billions)**

Month	Canada	Japan	France	US	Germany	UK	Netherlands	Aust/NZ	Switzerland
2016-08	99.6	87.6	145.4	100.7	39.5	40.6	28.0	50.3	24.6
2016-09	76.8	50.4	55.4	77.2	28.7	30.2	23.8	37.4	13.2
2016-10	56.3	47.9	53.1	55.4	23.7	25.7	20.3	28.3	12.3
2016-11	60.3	43.8	57.6	52.9	22.7	21.8	21.8	29.0	10.5
2016-12	70.6	44.8	41.6	58.6	19.9	13.6	12.3	34.5	11.3
2017-01	64.2	43.6	55.0	58.1	25.3	24.1	16.8	33.0	11.8
2017-02	66.5	44.9	62.0	54.0	26.5	20.5	16.4	35.3	12.0
2017-03	81.1	47.5	47.3	56.3	26.1	18.2	16.4	38.8	10.9
2017-04	68.8	48.3	59.4	61.2	25.0	25.9	19.9	39.1	14.8
2017-05	69.1	47.7	63.0	57.4	25.6	26.2	21.4	37.4	16.2
2017-06	80.4	49.4	45.2	59.5	18.8	23.1	16.2	38.2	15.5
2017-07	79.4	48.3	56.3	61.2	27.0	25.7	24.2	36.5	12.9
2017-08	76.9	48.5	64.7	61.6	28.4	26.0	31.5	38.7	14.7
2017-09	84.7	51.6	54.2	56.0	29.8	29.7	21.3	41.3	15.0
2017-10	78.5	50.1	63.3	61.0	28.2	31.3	34.7	40.9	16.7
2017-11	93.1	54.1	65.6	65.1	33.1	32.9	29.2	42.4	15.8
2017-12	101.9	51.9	39.1	67.4	24.5	30.5	14.5	47.1	16.4
2018-01	88.7	50.2	62.1	72.4	28.7	32.5	36.6	42.4	20.9
2018-02	89.3	55.2	63.5	63.8	27.2	35.5	33.1	39.2	24.0
2018-03	90.3	53.1	50.3	67.9	30.2	37.8	29.0	39.9	18.1
2018-04	84.9	57.7	61.3	66.2	31.3	38.8	28.1	36.7	30.5
2018-05	89.5	64.4	56.7	68.4	34.6	41.6	29.2	32.5	25.3
2018-06	91.8	59.6	48.0	66.4	32.6	31.9	19.0	35.7	17.8
2018-07	86.0	65.7	60.5	66.2	35.0	41.4	36.3	28.9	19.9
2018-08	90.4	66.4	59.7	71.8	34.3	44.6	32.1	30.6	19.0
2018-09	105.0	71.2	60.9	71.2	35.4	38.3	29.6	31.4	10.7
2018-10	98.5	69.0	78.2	77.4	40.3	46.2	26.9	33.8	20.4
2018-11	103.3	71.1	68.3	83.0	39.6	49.4	23.8	39.1	21.2
2018-12	123.3	83.0	53.8	92.4	23.1	35.4	15.6	40.2	23.9
2019-01	105.7	103.9	75.6	95.3	31.0	42.3	32.8	35.9	24.0
2019-02	112.4	89.0	79.8	94.8	31.4	44.5	25.0	36.0	29.5
2019-03	118.7	86.9	65.4	104.6	40.1	44.5	32.5	36.0	21.6
2019-04	124.3	99.7	86.1	117.8	41.3	40.3	31.6	33.8	28.4
2019-05	129.5	99.9	86.5	118.1	43.6	42.6	31.7	36.1	26.0
2019-06	147.8	96.8	72.1	121.7	42.9	48.7	28.8	38.2	21.9
2019-07	150.6	102.1	96.1	125.6	51.4	52.2	38.2	39.9	26.1
2019-08	144.8	104.3	90.5	126.5	53.5	45.8	35.3	43.5	24.2
2019-09	158.4	105.1	75.2	132.8	56.0	38.8	37.4	44.7	21.4
2019-10	148.6	113.4	85.0	124.6	52.8	54.5	47.2	50.0	23.1
2019-11	160.3	111.6	93.3	108.2	51.3	49.3	42.6	52.0	31.2
2019-12	168.8	117.3	76.7	106.9	35.8	35.8	34.0	54.6	28.1
2020-01	149.6	115.7	108.2	119.1	54.5	44.7	42.8	54.8	32.9
2020-02	164.1	107.3	101.1	113.1	56.1	50.1	44.6	46.5	26.6
2020-03	139.3	87.0	71.1	80.0	43.7	40.6	36.4	41.2	20.0
2020-04	132.5	97.2	88.4	87.7	40.3	45.6	37.2	32.8	20.1
2020-05	135.6	89.7	93.8	78.9	41.5	45.6	37.0	31.1	18.9
2020-06	140.8	95.8	84.8	79.7	35.8	45.3	30.2	26.6	18.9
2020-07	121.9	98.7	87.5	72.9	45.4	43.3	33.9	22.6	17.3
2020-08	119.0	94.9	86.0	72.0	45.4	42.4	31.0	21.7	18.3

**Table A10: Prime Holdings of Bank-Related Securities  
by Region (\$ Billions)**

Month	Americas	Eurozone	Asia-Pacific	Europe (non-Euro)
2016-08	201.4	227.7	161.9	186.9
2016-09	154.5	110.4	98.6	108.2
2016-10	112.3	102.5	84.3	86.9
2016-11	113.8	108.0	80.6	81.3
2016-12	129.8	78.4	88.8	53.8
2017-01	122.9	107.5	86.2	84.3
2017-02	121.3	115.9	90.3	88.2
2017-03	138.4	95.2	97.1	91.0
2017-04	130.6	117.1	98.5	99.1
2017-05	127.1	122.7	95.3	99.4
2017-06	140.4	86.6	102.0	92.0
2017-07	141.1	120.2	98.4	90.4
2017-08	139.2	137.3	100.5	98.6
2017-09	141.2	112.3	107.7	107.4
2017-10	140.1	141.1	103.3	106.4
2017-11	158.8	141.6	109.9	101.8
2017-12	170.1	86.7	114.2	85.4
2018-01	161.7	140.6	104.4	104.2
2018-02	153.7	135.4	107.3	111.0
2018-03	158.8	115.3	106.8	98.3
2018-04	151.6	130.6	108.5	124.3
2018-05	158.6	127.9	109.8	115.5
2018-06	158.8	106.8	110.0	107.2
2018-07	152.8	140.1	110.0	115.7
2018-08	162.9	135.0	111.8	117.8
2018-09	177.2	133.7	119.7	101.2
2018-10	176.6	158.0	118.5	118.9
2018-11	186.8	146.2	124.8	122.6
2018-12	216.5	103.4	138.1	99.3
2019-01	201.6	155.8	153.6	119.7
2019-02	207.7	151.1	139.5	139.0
2019-03	223.9	146.0	141.5	130.1
2019-04	242.7	168.8	152.9	124.5
2019-05	248.3	168.6	159.1	118.6
2019-06	270.2	152.0	161.3	125.5
2019-07	277.0	195.3	166.1	121.4
2019-08	272.0	189.7	172.3	119.4
2019-09	291.8	178.4	175.8	109.3
2019-10	273.7	197.1	189.9	129.8
2019-11	269.0	199.3	188.0	135.7
2019-12	276.0	156.3	196.4	105.2
2020-01	269.1	222.8	194.3	137.9
2020-02	277.7	218.9	174.1	133.6
2020-03	219.6	162.1	144.1	108.2
2020-04	220.8	179.5	144.0	111.9
2020-05	215.0	182.7	137.2	104.8
2020-06	221.2	156.9	141.6	105.2
2020-07	195.4	175.1	138.9	99.5
2020-08	191.7	171.0	130.7	105.1

**Table A11: Prime Money Market Fund Aggregate Product Exposures (\$ Billions)**

Month	CDs and Time		Non-Financial Co.			Total
	Gov. and Treas.	Deposits	Financial Co. CP	CP and Other	Asset-Backed	
2016-08	220.1	458.6	141.5	159.0	50.5	1,029.7
2016-09	222.9	260.3	86.1	129.1	32.2	730.6
2016-10	125.9	212.5	86.7	106.5	31.2	562.8
2016-11	125.2	211.1	86.1	112.7	32.6	567.7
2016-12	138.1	191.5	78.7	104.5	32.5	545.3
2017-01	105.9	232.3	86.9	104.0	31.3	560.4
2017-02	109.1	244.0	94.7	104.0	31.9	583.7
2017-03	122.9	245.7	100.7	93.2	31.5	594.0
2017-04	105.5	259.2	103.0	101.8	34.3	603.8
2017-05	120.1	257.7	103.1	94.6	34.9	610.4
2017-06	154.7	231.7	101.6	83.5	38.0	609.5
2017-07	136.5	255.8	103.9	88.5	37.7	622.4
2017-08	117.6	271.3	118.8	92.3	41.2	641.2
2017-09	150.2	263.1	115.3	93.9	38.1	660.6
2017-10	137.3	279.1	119.3	95.2	38.9	669.8
2017-11	132.1	283.6	126.7	95.7	40.2	678.3
2017-12	162.5	229.6	125.7	98.8	41.4	658.0
2018-01	120.8	265.8	141.6	97.7	42.0	667.9
2018-02	123.7	256.6	143.6	104.0	40.2	668.1
2018-03	161.9	222.9	132.0	99.0	39.9	655.7
2018-04	163.5	242.6	142.4	97.6	38.0	684.1
2018-05	161.9	227.3	146.7	104.6	41.7	682.2
2018-06	158.9	230.1	143.2	95.3	41.9	669.4
2018-07	156.4	244.0	153.1	109.1	44.4	707.0
2018-08	189.3	240.4	150.5	104.4	45.8	730.4
2018-09	186.7	246.2	153.7	109.6	47.5	743.7
2018-10	172.4	262.8	156.7	107.4	46.8	746.1
2018-11	190.3	263.0	156.4	106.6	51.9	768.2
2018-12	212.8	245.8	149.1	99.9	55.2	762.8
2019-01	216.2	289.4	160.7	99.4	58.3	824.0
2019-02	244.6	298.0	167.8	109.3	59.1	878.8
2019-03	313.3	282.8	186.9	130.1	58.0	971.1
2019-04	310.3	298.7	192.1	140.9	59.5	1,001.5
2019-05	301.0	302.6	197.0	145.4	62.0	1,008.0
2019-06	281.6	321.8	205.1	147.7	62.7	1,018.9
2019-07	290.7	320.3	216.6	149.0	63.9	1,040.5
2019-08	310.1	333.0	213.5	140.2	63.8	1,060.6
2019-09	326.3	316.0	226.7	142.0	63.5	1,074.5
2019-10	322.1	332.7	236.4	150.0	62.9	1,104.1
2019-11	314.8	346.1	236.5	158.0	64.0	1,119.4
2019-12	359.3	307.9	214.0	146.7	62.3	1,090.2
2020-01	311.0	369.1	226.9	153.9	60.3	1,121.2
2020-02	308.4	360.8	209.9	162.9	64.4	1,106.4
2020-03	303.6	281.8	190.3	152.1	53.6	981.4
2020-04	420.0	290.0	180.4	149.4	55.7	1,095.5
2020-05	489.3	275.5	171.6	157.7	62.1	1,156.2
2020-06	534.0	252.7	174.0	149.0	62.6	1,172.3
2020-07	513.4	257.3	163.8	156.3	59.4	1,150.2
2020-08	542.5	249.0	157.8	144.1	56.2	1,149.6

**Table A12: Government & Treasury Funds Bank Repo Counterparties by Country (\$ Billions)**

Month	US	Canada	France	UK	Germany	Japan	Other
2016-08	106.0	75.8	173.6	41.9	20.0	37.8	38.4
2016-09	112.6	75.1	99.4	53.1	15.2	54.0	20.0
2016-10	132.1	67.7	180.9	49.2	35.7	66.1	40.7
2016-11	128.8	90.4	167.1	44.5	27.9	75.9	38.1
2016-12	104.2	92.4	77.7	26.1	10.2	66.7	16.4
2017-01	130.5	87.7	184.0	50.6	23.4	77.6	38.5
2017-02	131.6	97.7	187.1	47.2	22.6	81.0	29.3
2017-03	116.9	103.2	115.0	34.4	13.6	82.7	22.3
2017-04	137.3	107.5	193.5	62.1	19.4	94.7	39.7
2017-05	133.5	116.0	189.5	73.4	20.1	98.9	37.8
2017-06	114.1	113.3	125.4	63.5	15.2	97.7	28.1
2017-07	130.4	103.3	200.0	74.5	21.8	103.2	41.1
2017-08	137.8	113.7	219.8	75.5	17.6	112.4	50.1
2017-09	118.2	119.6	165.4	55.8	18.9	99.5	36.6
2017-10	127.6	115.1	242.0	81.7	21.2	105.8	51.1
2017-11	135.6	125.5	245.9	84.1	28.5	109.1	56.5
2017-12	127.8	148.8	111.7	76.2	26.7	115.0	28.4
2018-01	145.4	128.3	219.6	95.4	36.9	115.4	55.2
2018-02	143.1	124.8	222.2	101.8	24.8	120.5	54.4
2018-03	126.1	130.7	181.2	100.6	15.3	104.2	35.8
2018-04	156.3	118.5	236.5	108.9	17.1	120.4	45.3
2018-05	154.6	127.4	255.8	104.0	20.5	115.8	48.1
2018-06	153.8	144.2	193.3	86.1	10.8	126.2	33.7
2018-07	152.2	126.4	244.6	95.9	26.0	136.4	52.9
2018-08	143.5	124.6	230.8	104.7	23.2	139.0	50.5
2018-09	149.2	140.2	185.4	93.1	18.3	135.1	36.7
2018-10	142.8	122.6	223.5	97.2	24.3	136.1	50.1
2018-11	141.9	147.9	208.9	96.9	25.2	134.7	44.6
2018-12	172.2	165.8	133.1	89.4	15.3	135.1	38.1
2019-01	174.7	145.0	224.6	102.1	20.8	141.2	44.5
2019-02	174.5	154.9	218.9	98.8	19.7	134.0	44.4
2019-03	191.6	165.7	172.3	89.4	23.1	123.8	29.4
2019-04	194.5	140.4	217.5	99.9	18.2	134.7	41.8
2019-05	202.4	145.6	223.6	100.9	19.6	139.0	37.9
2019-06	209.5	164.0	180.0	98.3	18.7	130.7	32.2
2019-07	221.8	130.2	232.5	115.4	19.3	138.2	37.9
2019-08	218.1	162.5	239.3	116.5	20.9	144.0	35.8
2019-09	237.3	167.0	196.7	88.5	22.2	136.4	36.6
2019-10	183.1	146.4	235.7	73.4	20.3	149.3	41.0
2019-11	181.3	170.3	202.1	82.2	21.5	159.8	36.1
2019-12	165.6	196.2	125.6	75.4	11.8	138.6	33.9
2020-01	191.3	168.7	197.6	102.3	23.3	153.1	40.7
2020-02	210.7	166.5	213.7	121.2	24.5	151.7	41.6
2020-03	200.3	186.1	181.1	96.2	25.4	147.0	45.5
2020-04	201.4	153.9	217.1	117.5	31.4	159.8	42.9
2020-05	177.4	139.7	190.6	78.2	29.8	142.3	40.0
2020-06	172.1	131.4	146.1	67.6	22.4	118.5	36.5
2020-07	168.3	129.4	189.1	76.7	27.5	118.6	44.1
2020-08	179.8	134.4	197.2	78.4	21.0	132.0	44.8



**Table A13: Money Market Fund Repurchase Agreements  
with the Federal Reserve (\$ Billions)**

Month	Total
2016-08	149.900
2016-09	384.300
2016-10	198.100
2016-11	177.300
2016-12	403.400
2017-01	165.200
2017-02	194.000
2017-03	328.800
2017-04	174.300
2017-05	244.100
2017-06	365.100
2017-07	189.700
2017-08	204.100
2017-09	298.500
2017-10	164.400
2017-11	96.200
2017-12	288.100
2018-01	55.100
2018-02	30.900
2018-03	22.600
2018-04	13.700
2018-05	21.500
2018-06	88.800
2018-07	9.000
2018-08	0.400
2018-09	44.900
2018-10	4.800
2018-11	2.500
2018-12	39.600
2019-01	1.000
2019-02	3.400
2019-03	0.700
2019-04	0.000
2019-05	0.900
2019-06	43.600
2019-07	7.400
2019-08	12.100
2019-09	7.100
2019-10	2.800
2019-11	0.500
2019-12	47.400
2020-01	4.500
2020-02	2.200
2020-03	284.900
2020-04	1.800
2020-05	1.300
2020-06	1.000
2020-07	0.200
2020-08	0.000

**Table A14: Securities with more than 179 Days to Maturity  
(Percent)**

Month	Prime (Pre-Oct. 2016)	Prime Institutional	Prime Retail	Tax Exempt (Pre-Oct. 2016)	Tax Exempt Institutional	Tax Exempt Retail	Government	Treasury
2016-08	3.0	-	-	6.4	-	-	18.6	16.5
2016-09	3.6	-	-	6.0	-	-	17.2	17.4
2016-10	-	6.3	6.2	-	3.2	6.0	17.1	18.6
2016-11	-	5.7	6.8	-	3.9	6.5	17.5	16.5
2016-12	-	6.8	6.9	-	3.4	6.0	18.2	18.0
2017-01	-	7.2	6.5	-	1.7	3.9	19.0	18.9
2017-02	-	6.9	7.1	-	1.9	3.4	18.0	17.2
2017-03	-	9.2	8.3	-	1.6	3.3	17.9	17.7
2017-04	-	8.6	7.7	-	1.5	2.9	16.7	17.8
2017-05	-	9.0	8.1	-	1.0	2.6	16.3	14.7
2017-06	-	9.2	8.3	-	1.2	3.6	16.5	15.8
2017-07	-	10.2	10.5	-	1.1	4.1	15.7	15.9
2017-08	-	9.1	11.5	-	1.5	5.6	15.0	13.3
2017-09	-	9.1	9.7	-	1.7	5.5	13.8	15.1
2017-10	-	10.1	9.1	-	1.8	5.3	13.7	15.2
2017-11	-	10.3	10.6	-	2.4	6.1	15.6	13.1
2017-12	-	8.7	8.3	-	3.1	5.8	15.9	13.7
2018-01	-	8.3	9.2	-	2.0	4.4	16.6	15.3
2018-02	-	7.2	10.1	-	2.0	4.1	16.2	12.8
2018-03	-	6.9	8.7	-	0.9	2.9	15.8	14.1
2018-04	-	6.4	7.9	-	0.6	2.8	15.0	14.3
2018-05	-	6.5	5.4	-	0.5	3.0	14.1	13.9
2018-06	-	7.4	7.8	-	0.4	3.4	15.3	15.1
2018-07	-	8.2	6.5	-	0.7	4.0	15.7	15.7
2018-08	-	9.2	6.0	-	0.6	4.7	15.5	15.0
2018-09	-	9.0	7.2	-	1.1	6.6	14.3	14.6
2018-10	-	8.1	8.0	-	2.0	7.2	15.2	15.9
2018-11	-	8.4	8.3	-	2.1	7.1	15.2	14.4
2018-12	-	7.9	6.2	-	1.9	5.0	15.5	15.3
2019-01	-	9.0	6.3	-	1.9	5.0	15.5	16.9
2019-02	-	8.1	7.7	-	1.9	4.8	15.3	14.5
2019-03	-	7.3	7.8	-	0.7	2.9	16.0	15.2
2019-04	-	8.2	7.6	-	0.8	2.8	16.6	17.7
2019-05	-	9.0	6.0	-	1.0	3.1	17.8	14.7
2019-06	-	8.6	6.8	-	0.9	5.3	18.0	16.1
2019-07	-	9.5	8.4	-	0.9	6.1	18.0	17.9
2019-08	-	9.8	9.9	-	1.5	7.9	17.9	15.5
2019-09	-	9.5	9.2	-	2.2	8.7	17.7	15.8
2019-10	-	11.0	11.3	-	3.4	10.0	18.8	17.6
2019-11	-	10.0	10.9	-	2.9	9.7	17.5	14.5
2019-12	-	9.8	10.8	-	2.4	7.0	17.7	17.3
2020-01	-	10.1	8.8	-	2.2	6.0	18.4	18.6
2020-02	-	10.3	7.7	-	2.3	5.9	18.1	17.2
2020-03	-	9.1	5.7	-	0.6	4.9	18.9	15.8
2020-04	-	6.9	4.8	-	0.9	4.1	17.6	14.9
2020-05	-	6.1	3.1	-	1.4	4.2	16.4	13.7
2020-06	-	6.9	5.1	-	2.4	5.9	16.1	14.5
2020-07	-	8.2	6.7	-	2.7	7.0	16.5	15.0
2020-08	-	7.3	6.3	-	2.6	7.2	15.9	13.8

## II Key Definitions

*Included by reference are all definitions included in the definitions section of Form N-MFP and definitions set forth in Rule 2a-7 (17 CFR 270.2a-7).*

<i>Bank-related securities</i>	For purposes of this report, includes certificates of deposit, time deposits, sponsored ABCP, and repurchase agreements where the bank is the counterparty.
<i>Daily liquid assets</i>	Means: (i) Cash; (ii) Direct obligations of the U.S. Government; (iii) Securities that will mature (as determined without reference to the exceptions in paragraph (i) of 29 CFR 270.2a-7 regarding interest rate readjustments), or are subject to a demand feature that is exercisable and payable, within one business day; or (iv) Amounts receivable and due unconditionally within one business day on pending sales of portfolio securities.
<i>Form N-MFP</i>	Used by Money Market Funds to file reports with the Commission pursuant to rule 30b1-7 under the Act (17 CFR 270.30b1-7). The form is available <a href="#">here</a> .
<i>Fund Category</i>	A category on Item A.10 of Form N-MFP. Form N-MFP requests filers to identify each Fund from among the following categories: Treasury, Government Agency, Exempt Government, Prime, Single State and Other Tax Exempt, and further asks the filer to identify whether the Fund is an exempt Retail money market fund.
<i>Government money market fund</i>	A money market fund that invests 99.5 percent or more of its total assets in cash, government securities, and/or repurchase agreements that are collateralized fully.
<i>Institutional money market fund</i>	A Fund reported on Form N-MFP that is not identified as a Retail money market fund. Government and Treasury money market funds are not required to make this distinction.
<i>Money Market Fund (or Fund)</i>	A registered open-end management investment company, or series thereof, that is regulated as a money market fund pursuant to rule 2a-7 (17 CFR 270.2a-7) under the Investment Company Act of 1940.

<i>Prime money market fund</i>	Any Fund reported on Form N-MFP as a Prime money market fund. Prime money market funds generally hold a variety of taxable short-term obligations issued by corporations and banks, as well as repurchase agreements and assetbacked commercial paper. <sup>3</sup> <i>Nonpublic prime institutional money market fund</i> : A Fund that disclosed in its public filings with the SEC (Form N-CEN, Form N-CSR, or the fund's prospectus) that its shares are not intended to be offered to the public. Prime institutional money market funds that do not provide such disclosures are considered to be offered to the public.
<i>Retail money market fund</i>	A money market fund that has policies and procedures reasonably designed to limit all beneficial owners of the fund to natural persons. Government and Treasury money market funds are not required to make this distinction.
<i>Tax exempt fund</i>	A money market fund that holds itself out as distributing income exempt from regular federal income tax.
<i>Treasury money market fund</i>	A government money market fund that limits its holdings to only U.S. Treasury obligations or repurchase agreements collateralized by U.S. Treasury securities. <sup>4</sup>
<i>Weekly liquid assets</i>	Means: (i) Cash; (ii) Direct obligations of the U.S. Government; (iii) Government securities that are issued by a person controlled or supervised by and acting as an instrumentality of the government of the United States pursuant to authority granted by the Congress of the United States that: (A) Are issued at a discount to the principal amount to be repaid at maturity without provision for the payment of interest; and (B) Have a remaining maturity date of 60 days or less. (iv) Securities that will mature (as determined without reference to the exceptions in paragraph (i) of 29 CFR 270.2a-7 regarding interest rate readjustments), or are subject to a demand feature that is exercisable and payable, within five business days; or (v) Amounts receivable and due unconditionally within five business days on pending sales of portfolio securities.

---

<sup>3</sup>See Money Market Fund Reform; Amendments to Form PF, Investment Company Act Release No. 31166 (July 23, 2014), available [here](#).

<sup>4</sup>*Id.*