



Division of Investment Management
Analytics Office

Money Market Fund Statistics

Form N-MFP Data, period ending November 2020

Filings Received through December 8, 2020

This is a report of the Staff of the Division of Investment Management's Analytics Office of the U.S. Securities and Exchange Commission. The Commission has expressed no view regarding the analysis, findings, or conclusions contained herein.

Information presented in this report reflects staff's compilation and analysis of data reported to the Commission on [Form N-MFP](#) for the reference period. The presented information does not reflect any filings or amended filings submitted after December 8, 2020. Staff works with information reported on [Form N-MFP](#) and with filers to correct possible reporting errors and may update reported information to correct what appear to be clear filer errors. Corrected data from amended filings may be published in a corrected report or in the next regular report, as determined by staff.

If you have any questions or comments about this report, please contact [Viktoria Baklanova \(baklanovav@sec.gov\)](#), [Isaac Kuznits \(kuznitsi@sec.gov\)](#), or [Trevor Tatum \(tatunt@sec.gov\)](#) in the Division of Investment Management's Analytics Office with the subject line "Money Market Fund Statistics."

Table 1: Number of Money Market Funds ReportingFund totals do not include feeder funds. See [Figure 1](#) for more details.

Category	Fund Type	2020-11	Change	2020-10
Prime	Subtotal	74	-	74
	Institutional Public	39	-	39
	Institutional Nonpublic	7	-	7
	Retail	28	-	28
Tax Exempt	Subtotal	77	↓1	78
	Institutional	14	-	14
	Retail	63	↓1	64
Government & Treasury	Subtotal	197	↓2	199
	Government	143	↓1	144
	Treasury	54	↓1	55
Total	Total	348	↓3	351

Table 2: Money Market Fund Net Assets (\$ Billions)¹See [Figure 2](#) for more details.

Category	Fund Type	2020-11	Change	2020-10
Prime	Subtotal	956.2	↓5.8	962.0
	Institutional Public	450.2	↓13.9	464.1
	Institutional Nonpublic	219.2	↑16.3	202.9
	Retail	286.8	↓8.2	295.0
Tax Exempt	Subtotal	116.4	↓3.2	119.6
	Institutional	17.6	↓0.2	17.8
	Retail	98.8	↓3.0	101.8
Government & Treasury	Subtotal	3,735.2	↑27.7	3,707.5
	Government	2,585.8	↑17.1	2,568.7
	Treasury	1,149.4	↑10.6	1,138.8
Total	Total	4,807.8	↑18.7	4,789.1

¹Some calculations in the change column in the tables in this report may not total as expected due to rounding. Terms used in this report are defined in [Appendix II](#), Key Definitions.

Table 3: Asset-Weighted Seven-Day Gross Yield (Percent)See [Figure 3](#) for more details.

Category	Fund Type	2020-11	Change	2020-10
Prime	Institutional	0.16	↓0.01	0.17
	Retail	0.20	↓0.01	0.21
Tax Exempt	Institutional	0.15	↓0.01	0.16
	Retail	0.20	↓0.02	0.22
Government & Treasury	Government	0.14	↓0.02	0.16
	Treasury	0.14	↓0.02	0.16

Table 4: Asset-Weighted Seven-Day Net Yield (Percent)See [Figure 4](#) for more details.

Category	Fund Type	2020-11	Change	2020-10
Prime	Institutional	0.10	-	0.10
	Retail	0.03	-	0.03
Tax Exempt	Institutional	0.07	-	0.07
	Retail	0.02	↓0.01	0.03
Government & Treasury	Government	0.02	-	0.02
	Treasury	0.01	-	0.01

Table 5: Weighted Average Life (Days)See [Figure 5](#) for more details.

Category	Fund Type	2020-11	Change	2020-10
Prime	Institutional	56.6	↓3.8	60.4
	Retail	53.2	↓6.1	59.3
Tax Exempt	Institutional	16.6	↓1.6	18.2
	Retail	29.0	↓3.3	32.3
Government & Treasury	Government	99.0	↓2.1	101.1
	Treasury	97.8	↑0.0	97.8

Table 6: Weighted Average Maturity (Days)See [Figure 6](#) for more details.

Category	Fund Type	2020-11	Change	2020-10
Prime	Institutional	39.4	↓2.3	41.7
	Retail	45.5	↓5.6	51.1
Tax Exempt	Institutional	15.8	↓1.9	17.7
	Retail	27.5	↓3.4	30.9
Government & Treasury	Government	43.5	↓0.9	44.4
	Treasury	48.0	↑1.1	46.9

Table 7: Ratio of Daily Liquid Assets to Total Assets (Percent)See [Figure 7](#) for more details.

Category	Fund Type	2020-11	Change	2020-10
Prime	Institutional	55.1	↑1.5	53.6
	Retail	39.3	↑2.1	37.2
Government & Treasury	Government	65.9	↑2.5	63.4
	Treasury	95.3	↑0.5	94.8

Table 8: Ratio of Weekly Liquid Assets to Total Assets (Percent)See [Figure 8](#) for more details.

Category	Fund Type	2020-11	Change	2020-10
Prime	Institutional	67.0	↑1.4	65.6
	Retail	50.4	↑1.2	49.2
Tax Exempt	Institutional	90.3	↑1.9	88.4
	Retail	76.6	↑1.6	75.0
Government & Treasury	Government	79.1	↑1.3	77.8
	Treasury	99.0	↑0.7	98.3

Table 9: Prime Holdings of Bank-Related Securities by Country (\$ Billions)
See [Figure 9](#) for more details.

Country	2020-11	Change	2020-10
Canada	107.3	↑13.6	93.7
France	87.5	↑5.2	82.3
Japan	81.8	↓4.5	86.3
US	71.3	↑7.4	63.9
Germany	36.7	↓2.2	38.9
Netherlands	32.0	↑2.0	30.0
UK	30.0	↓5.2	35.2
Aust/NZ	22.4	↑3.8	18.6
Switzerland	18.2	↓3.6	21.8

Table 10: Prime Holdings of Bank-Related Securities by Region (\$ Billions)
See [Figure 10](#) for more details.

Country	2020-11	Change	2020-10
Americas	179.0	↑20.9	158.1
Eurozone	165.1	↑5.6	159.5
Asia-Pacific	115.7	↓1.4	117.1
Europe (non-Euro)	85.1	↓5.6	90.7

Table 11: Prime Money Market Fund Aggregate Product Exposures (\$ Billions)
See [Figure 11](#) for more details.

Asset Type	2020-11	Change	2020-10
Gov. and Treas.	410.9	↓8.3	419.2
CDs and Time Deposits	220.7	↑4.8	215.9
Financial Co. CP	150.0	↑8.8	141.2
Non-Financial Co. CP and Other	134.7	↓0.3	135.0
Asset-Backed	46.7	↓2.1	48.8
Total	963.0	↑2.9	960.1

Table 12: Government & Treasury Funds Bank Repo Counterparties by Country (\$ Billions)

See [Figure 12](#) for more details.

Month	2020-11	Change	2020-10
US	169.0	↓21.8	190.8
Canada	132.8	↑6.4	126.4
France	211.6	↑7.2	204.4
UK	83.9	↑10.8	73.1
Germany	19.6	↓0.9	20.5
Japan	135.1	↑17.3	117.8
Other	45.2	↑1.1	44.1
Total	797.2	↑20.1	777.1

Table 13: Money Market Fund Repurchase Agreements with the Federal Reserve (\$ Billions)

See [Figure 13](#) for more details.

	2020-11	Change	2020-10
Total	0.0	↑0.0	0.0

Table 14: Securities with more than 179 Days to Maturity (Percent)

See [Figure 14](#) for more details.

Category	Fund Type	2020-11	Change	2020-10
Prime	Institutional	7.0	↓0.8	7.8
	Retail	2.8	↓1.5	4.3
Tax Exempt	Institutional	3.1	↑0.0	3.1
	Retail	5.7	↓0.3	6.0
Government & Treasury	Government	14.3	↑0.0	14.3
	Treasury	12.5	↓2.4	14.9

Figure 1: Number of Money Market Funds

See [Table A1](#) for more details.

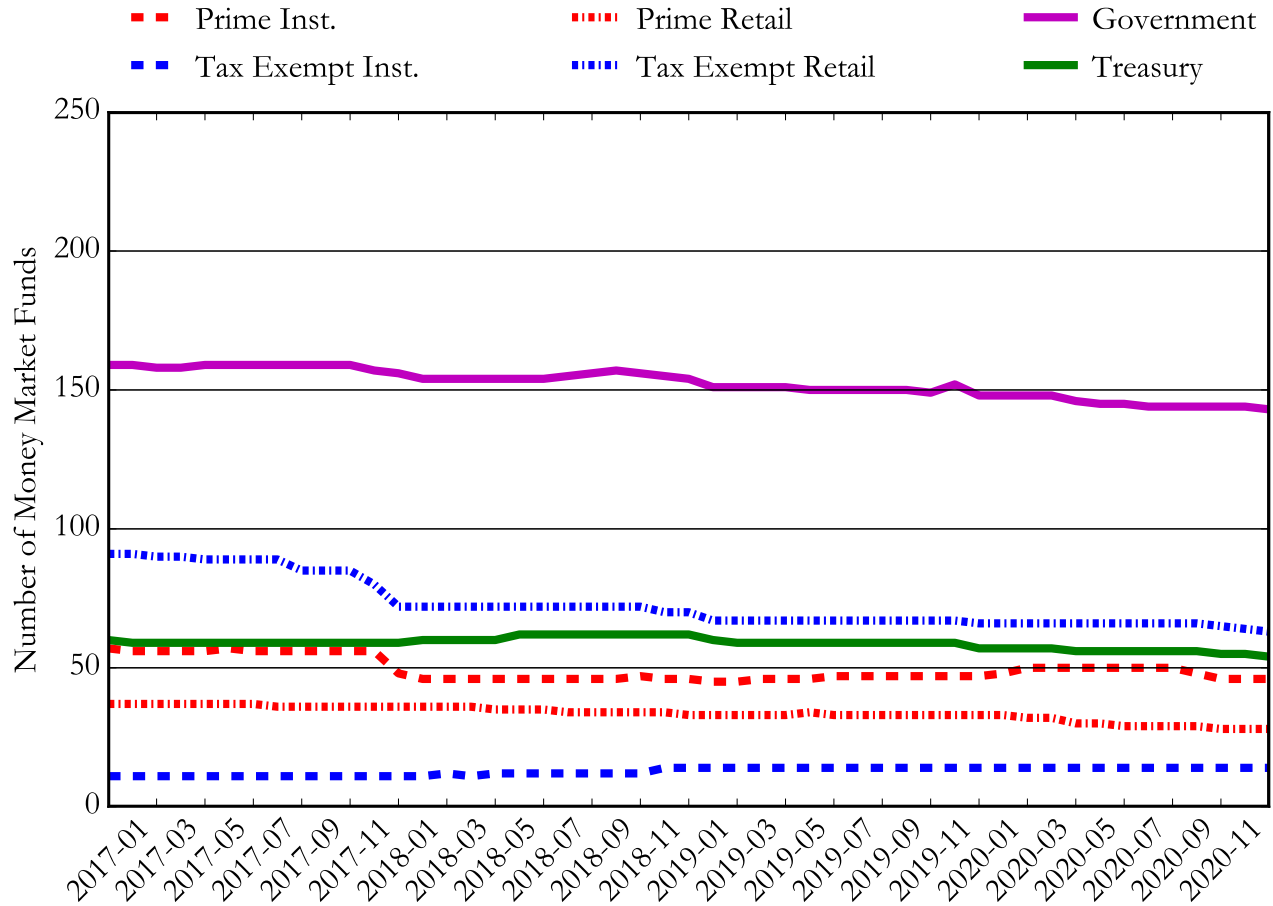


Figure 2: Money Market Fund Net Assets (\$ Billions)

See [Table A2](#) for more details.

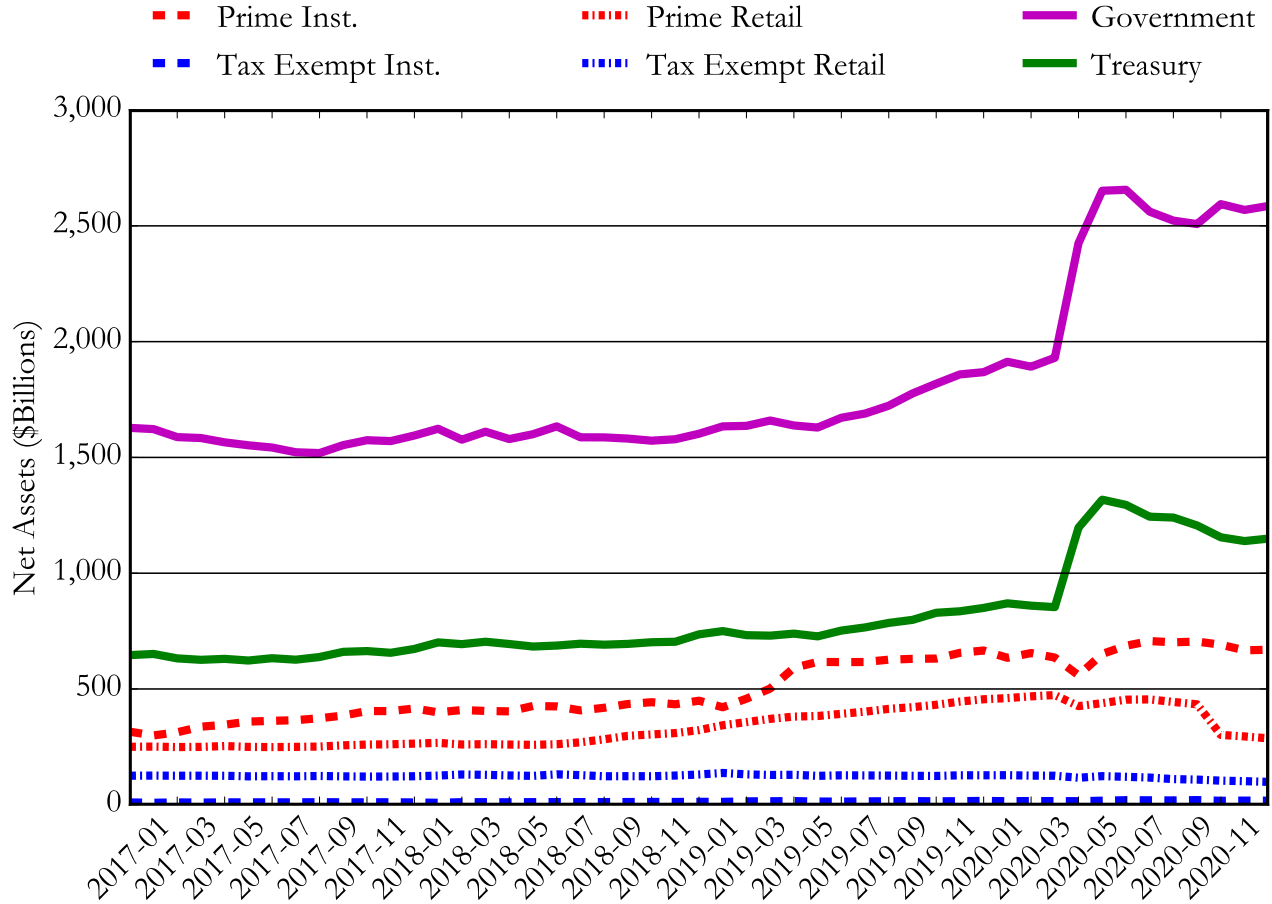


Figure 3: Weighted 7-Day Gross Yields

See [Table A3](#) for more details.

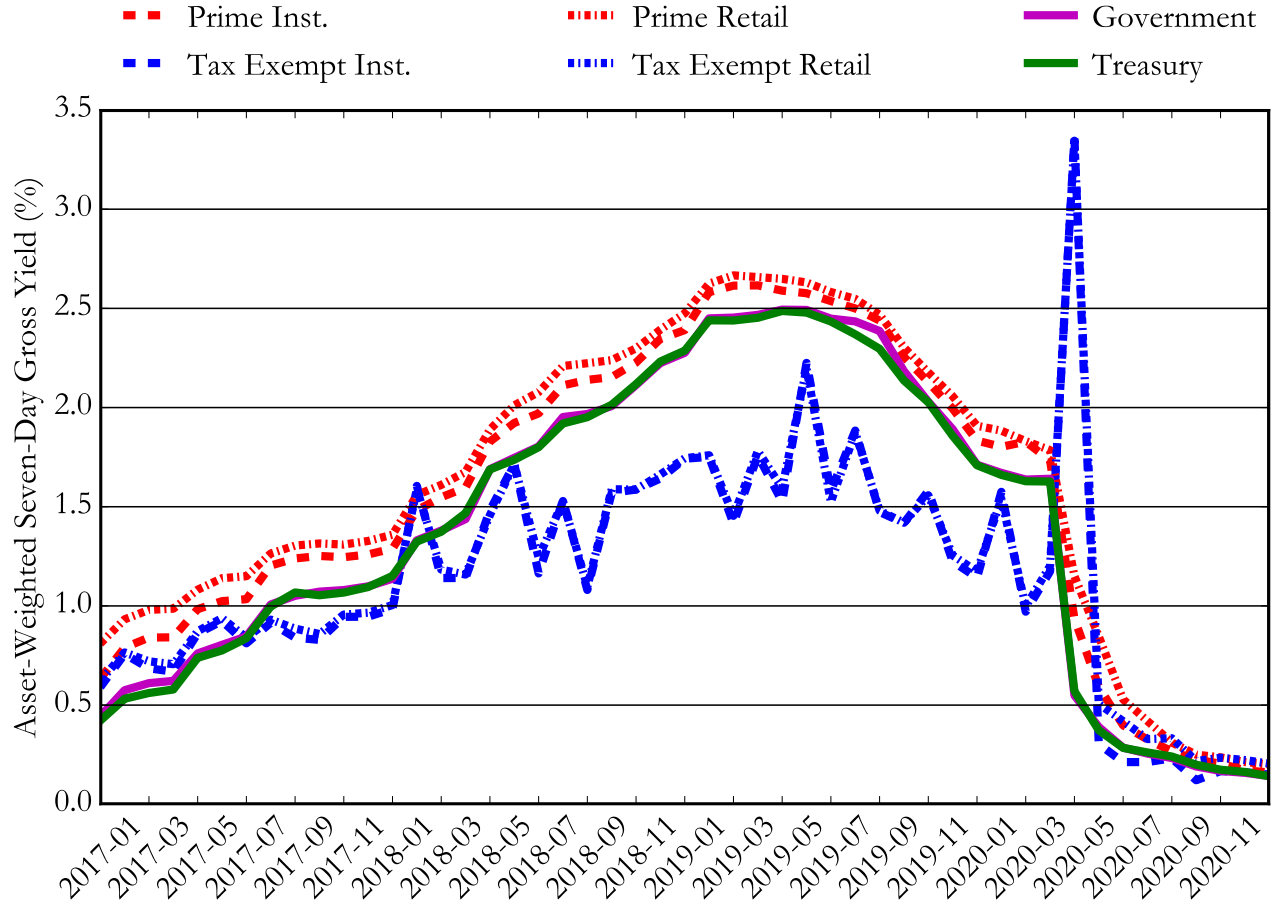


Figure 4: Weighted 7-Day Net Yields

See [Table A4](#) for more details.

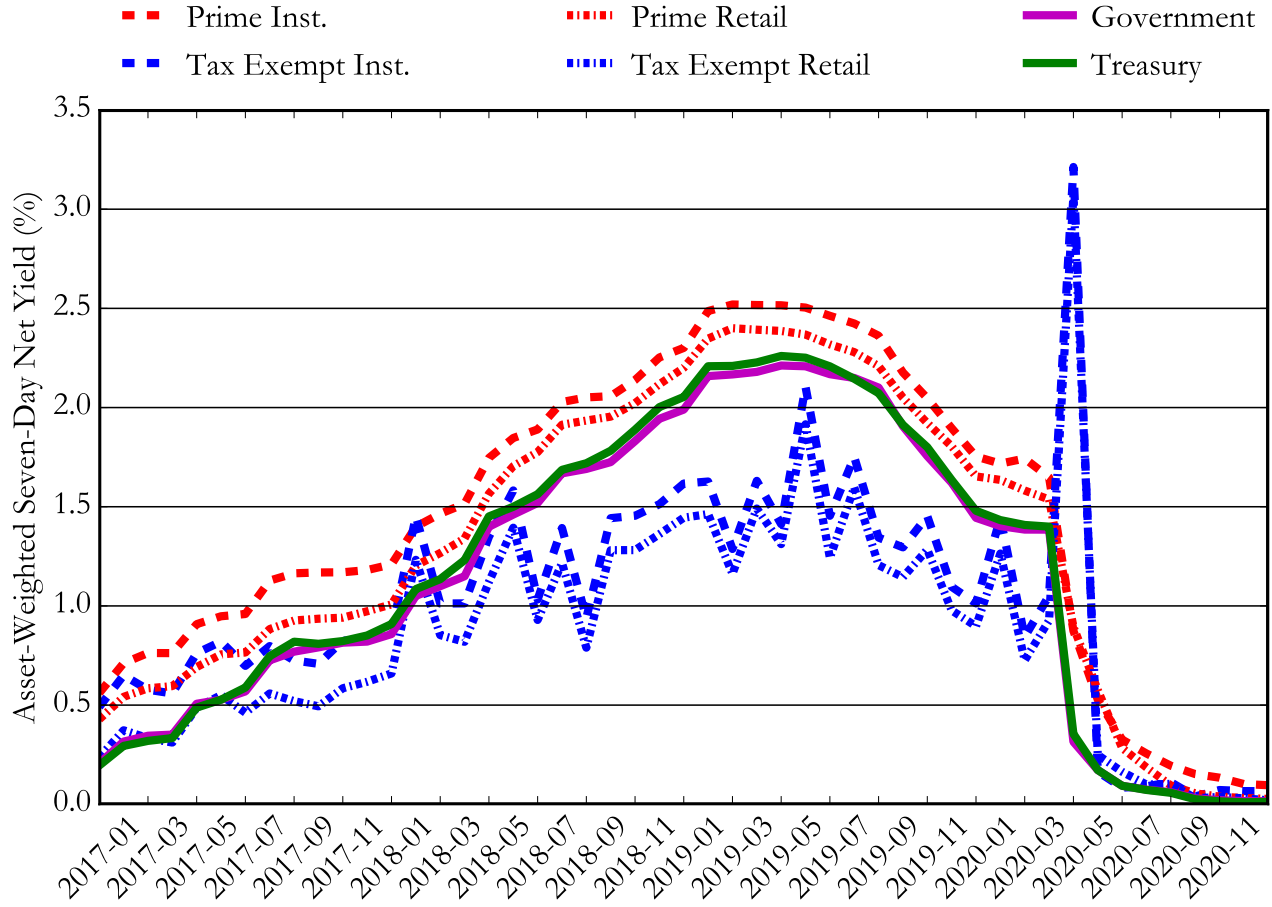


Figure 5: Weighted Average Life (Days)

See [Table A5](#) for more details.

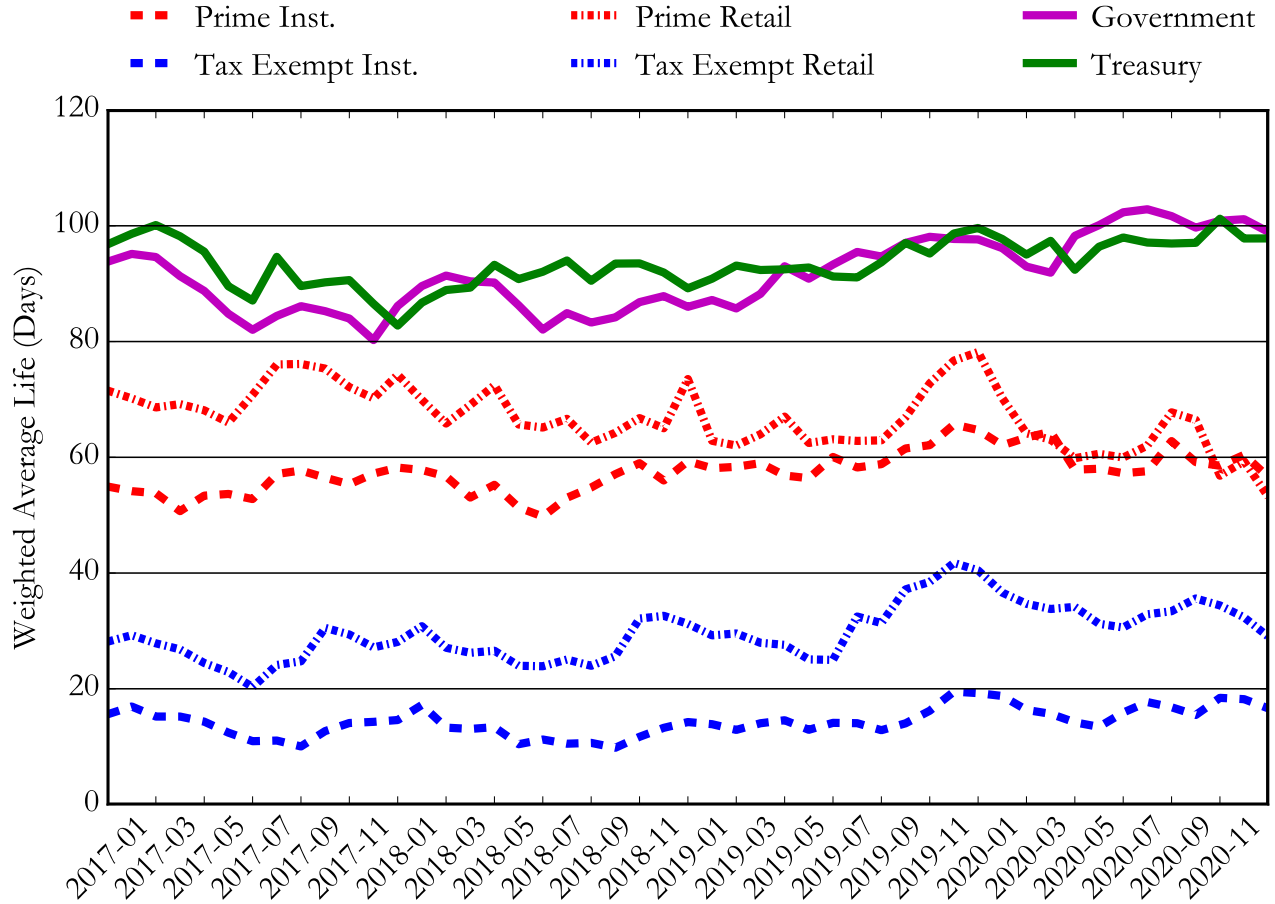


Figure 6: Weighted Average Maturity (Days)

See [Table A6](#) for more details.

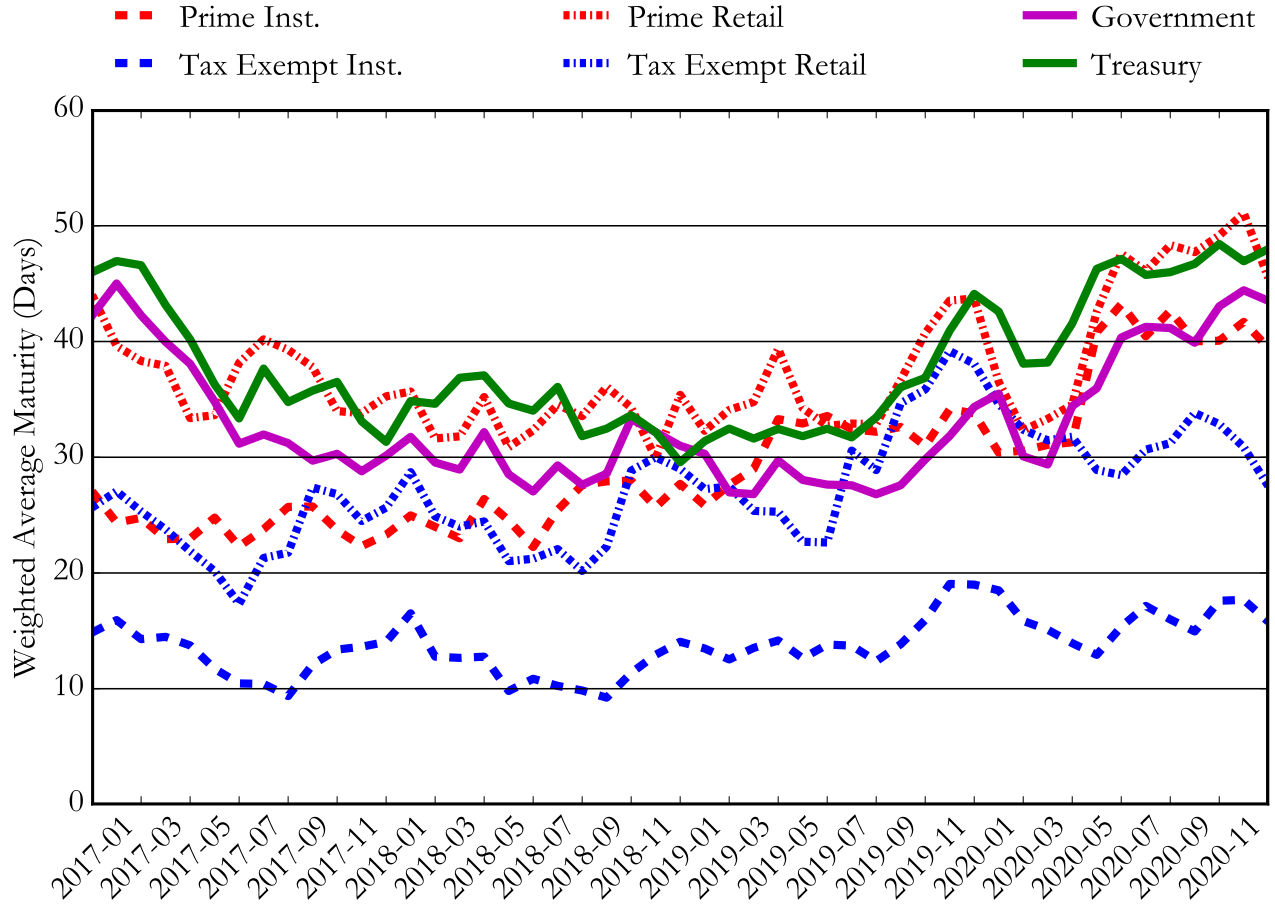


Figure 7: Daily Liquid Assets to Total Assets (Percent)

See [Table A7](#) for more details.

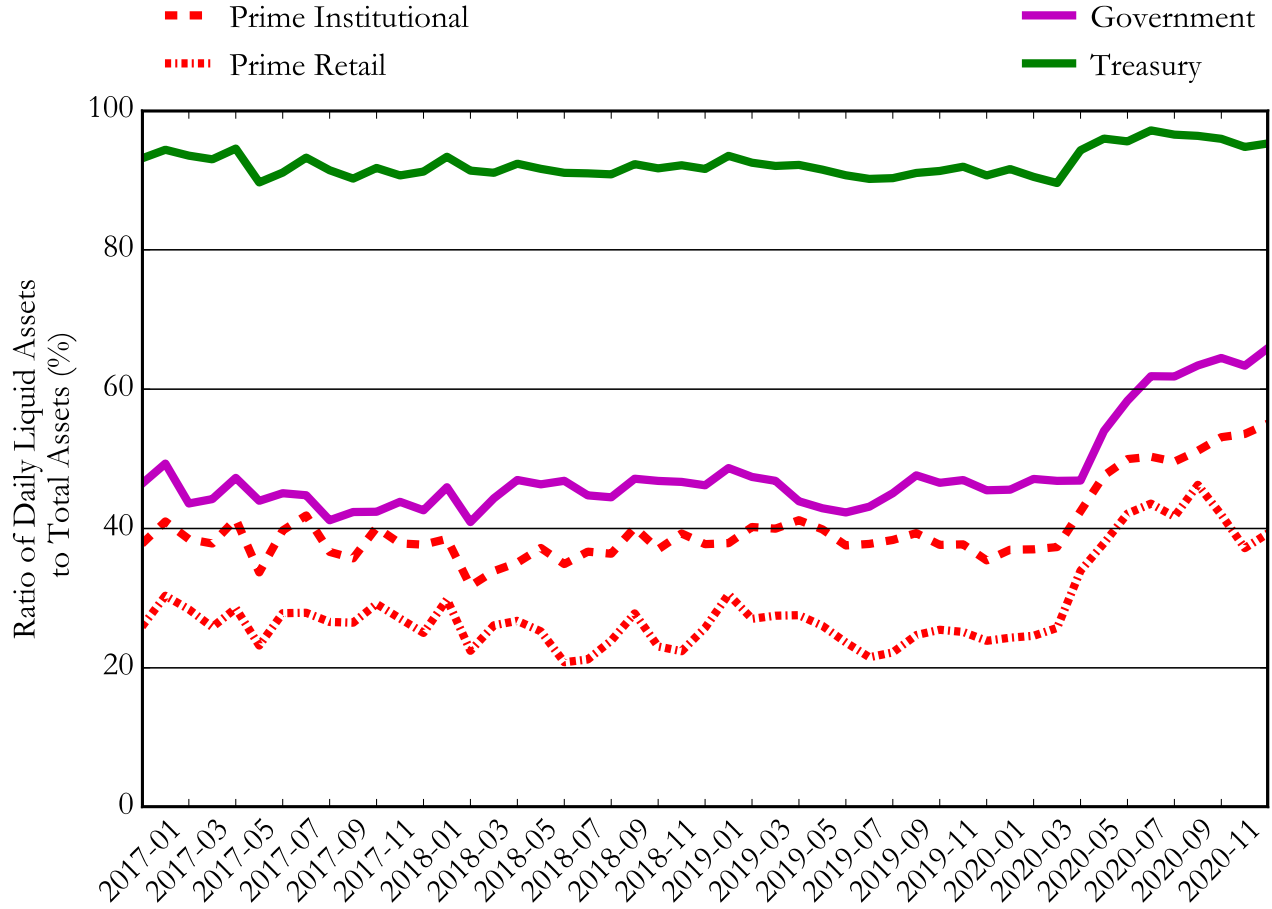


Figure 8: Weekly Liquid Assets to Total Assets (Percent)

See [Table A8](#) for more details.

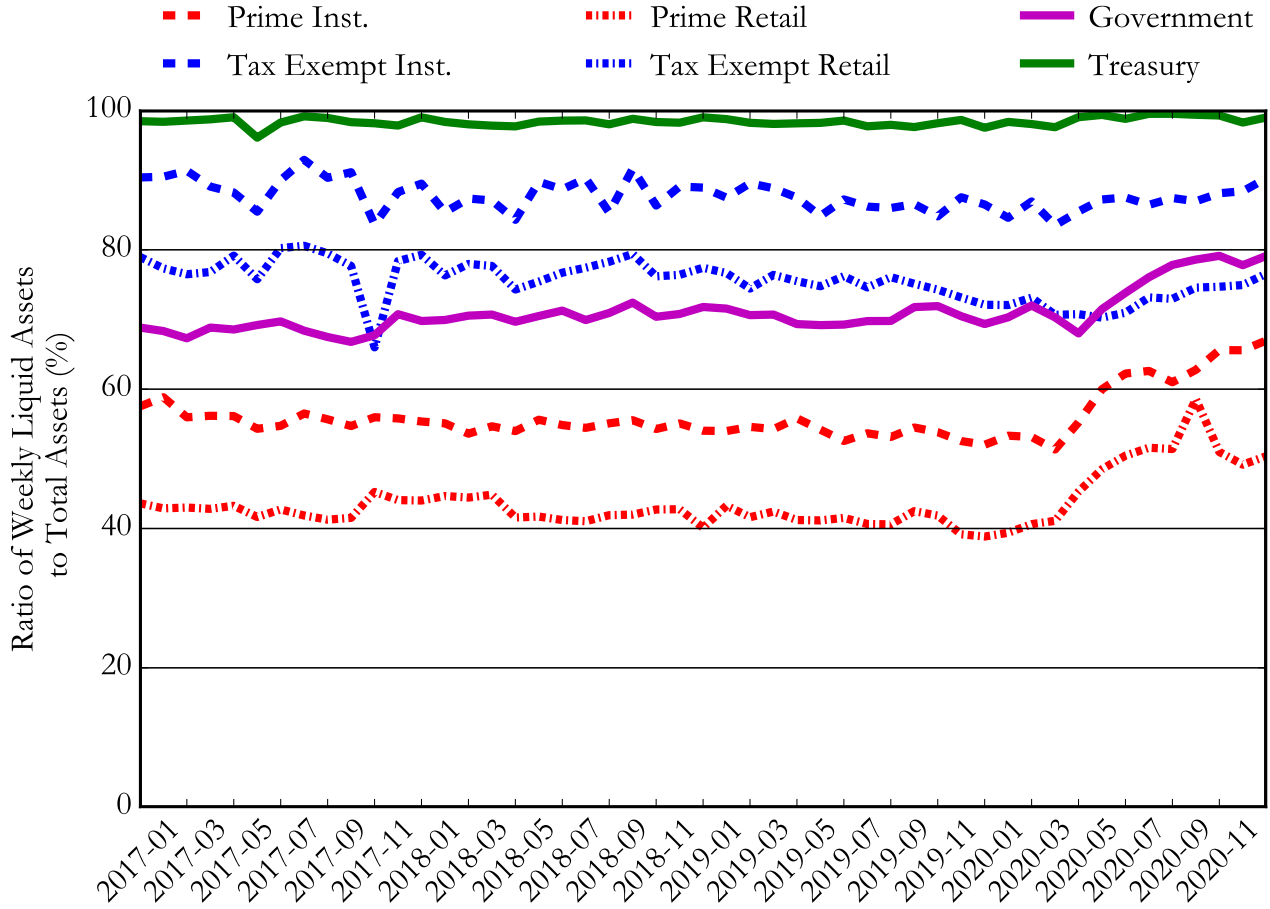
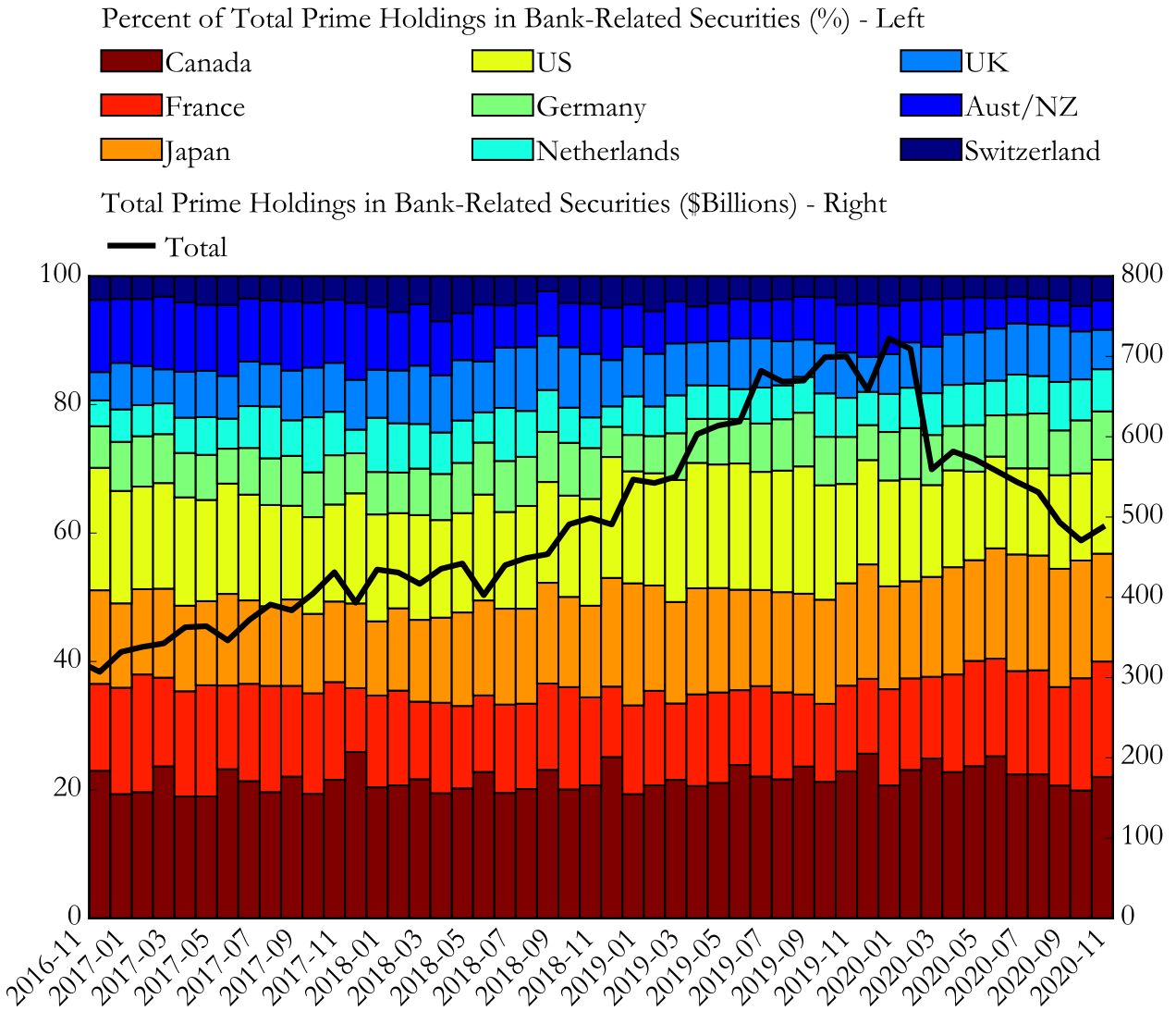


Figure 9: Prime Holdings of Bank-Related Securities by Country

See [Table A9](#) for more details.



**Figure 10: Prime Holdings of Bank-Related Securities
by Region**

See [Table A10](#) for more details.

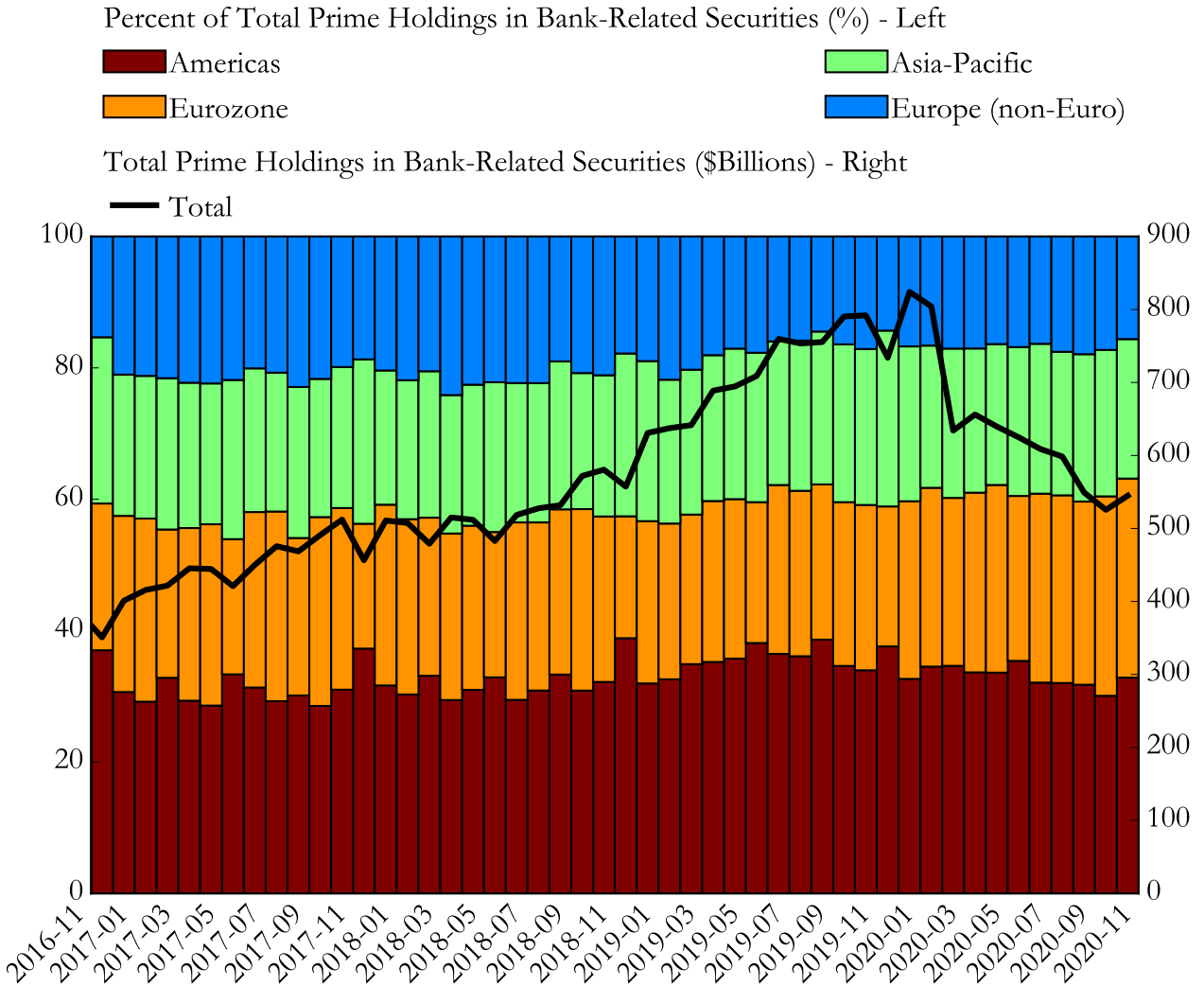


Figure 11: Prime Money Market Fund Aggregate Product Exposures

See [Table A11](#) for more details.

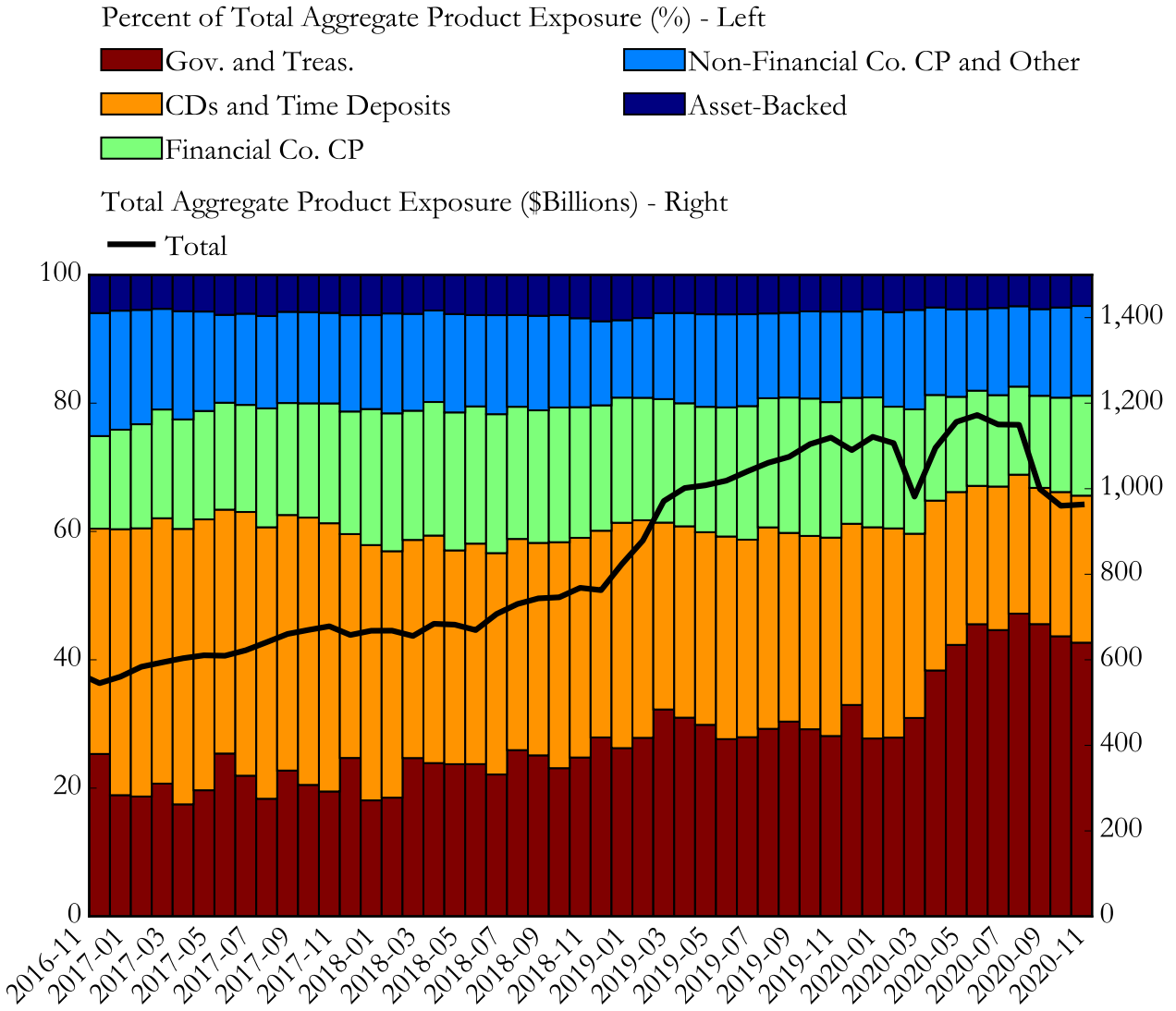


Figure 12: Government & Treasury Funds Bank Repo Counterparties by Country

See [Table A12](#) for more details.

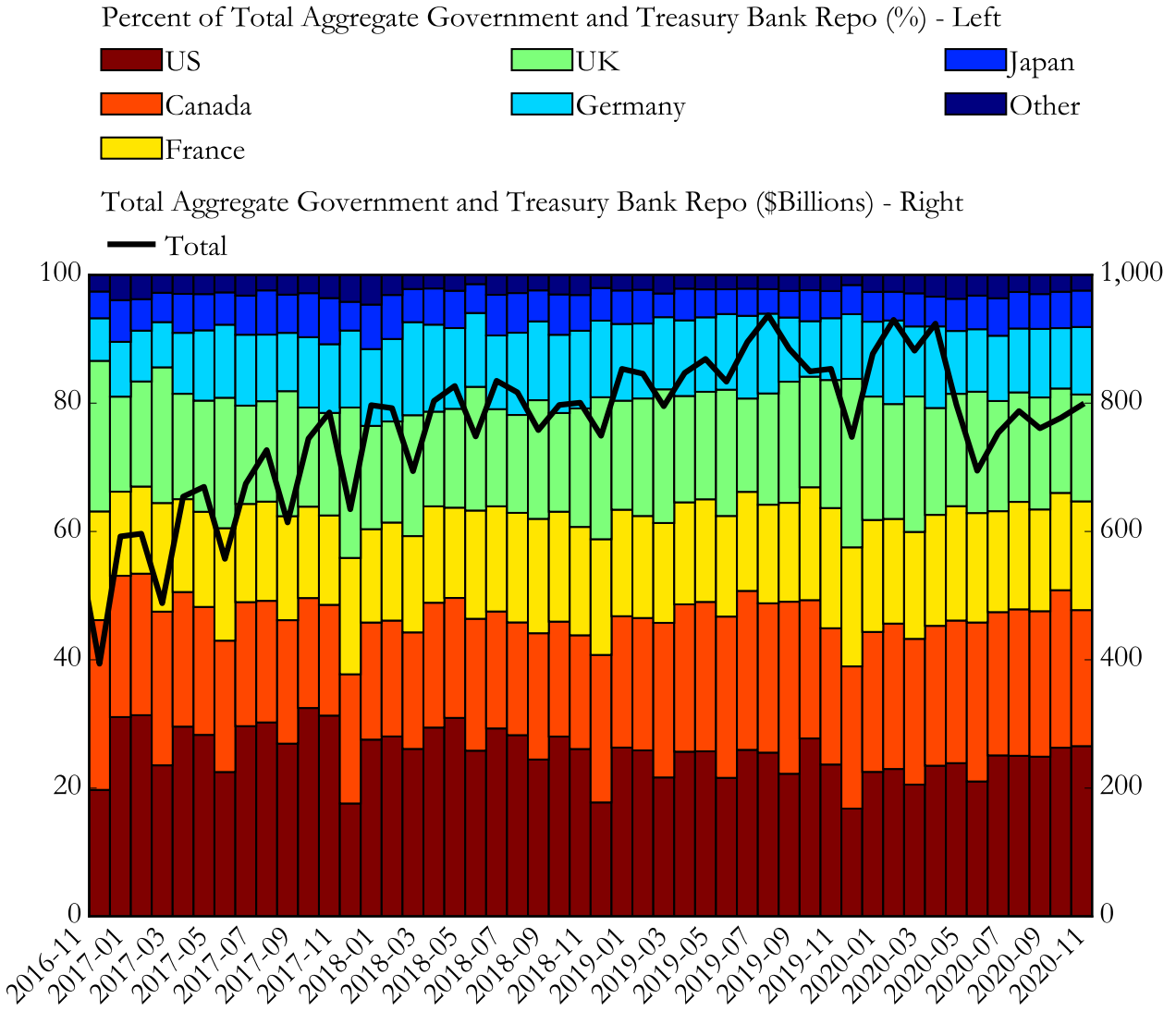
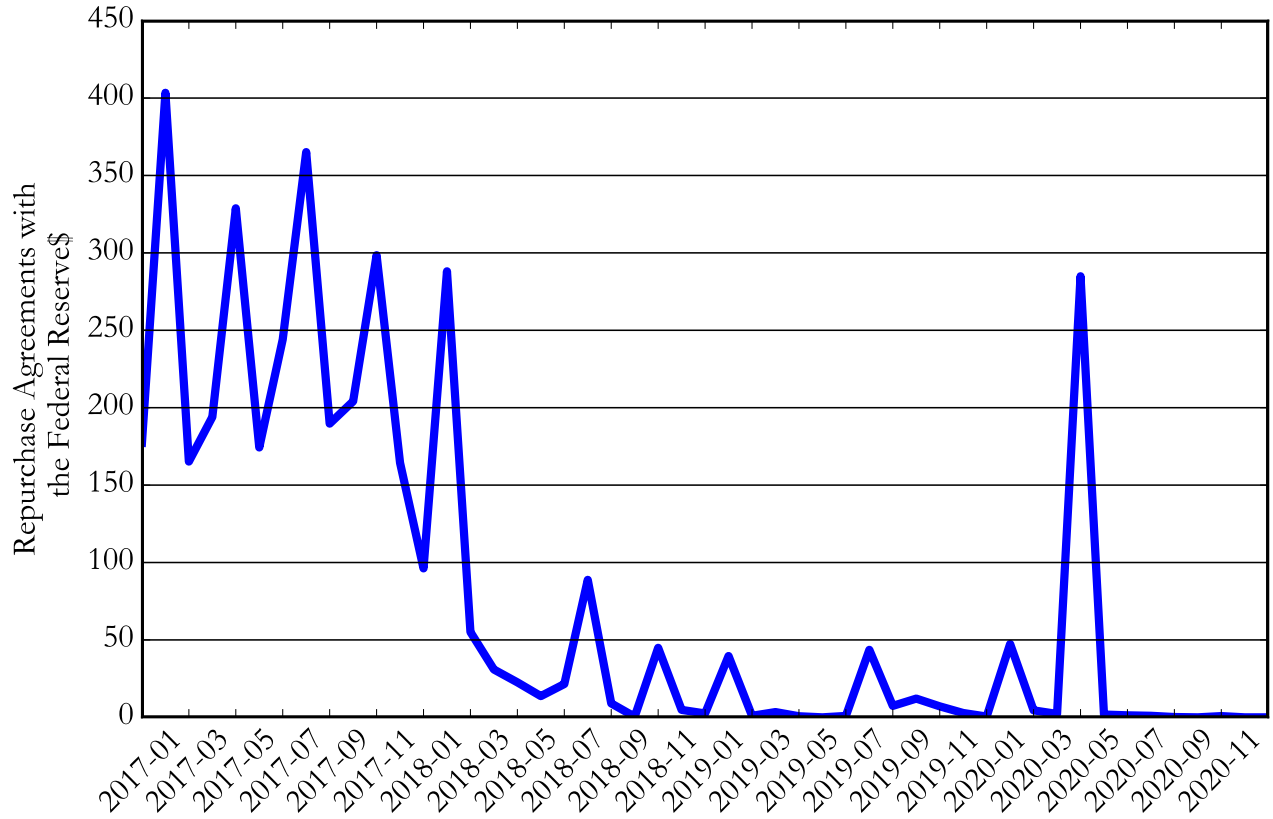


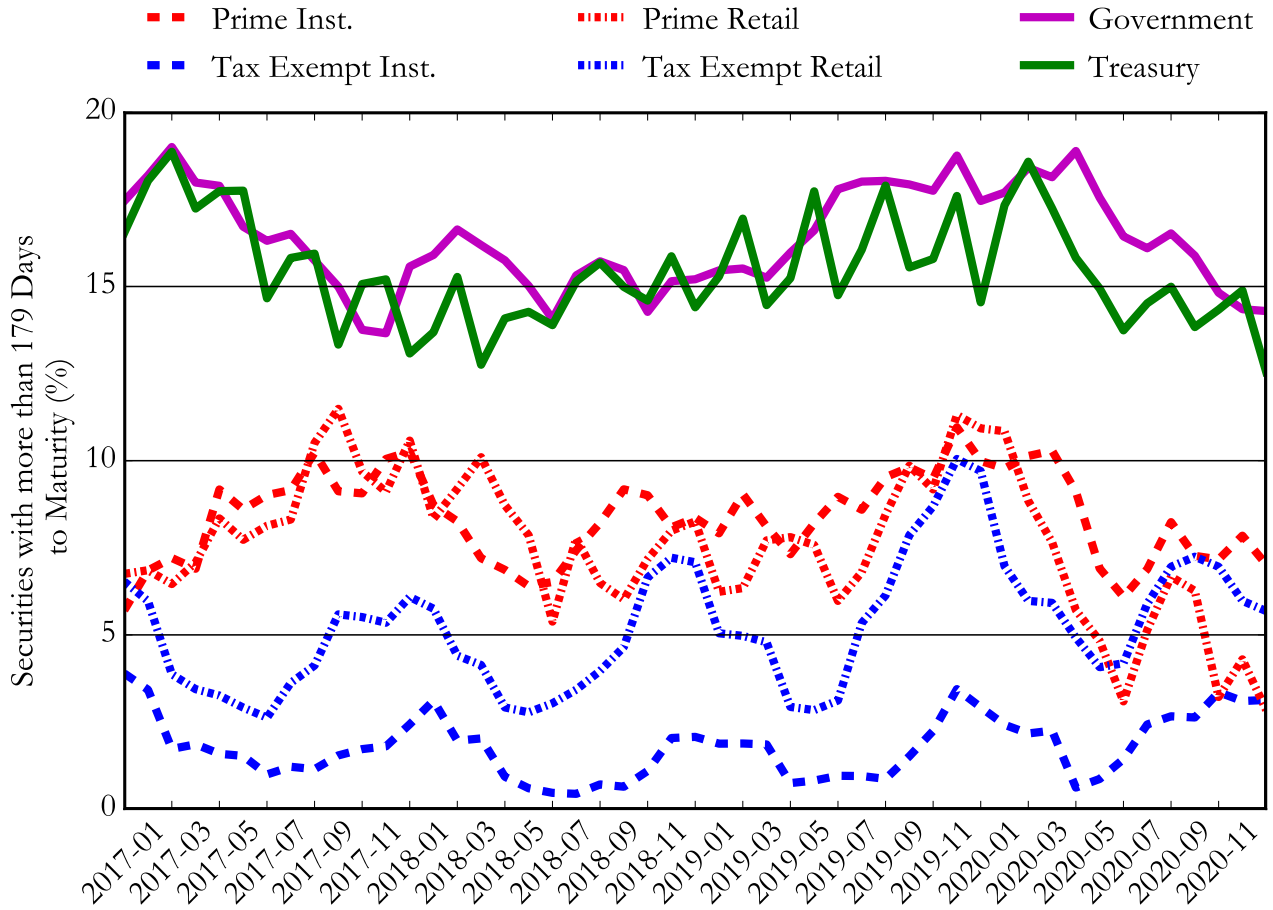
Figure 13: Money Market Fund Repurchase Agreements with the Federal Reserve (\$ Billions)

See [Table A13](#) for more details.



**Figure 14: Securities with more than 179 Days to Maturity
(Percent)**

See [Table A14](#) for more details.



I Supporting Data

Table A1: Number of Money Market Funds Reporting
Fund totals do not include feeder funds.

Month	Prime Institutional	Prime Retail	Tax Exempt Institutional	Tax Exempt Retail	Government	Treasury	Total
2016-11	57	37	11	91	159	60	415
2016-12	56	37	11	91	159	59	413
2017-01	56	37	11	90	158	59	411
2017-02	56	37	11	90	158	59	411
2017-03	56	37	11	89	159	59	411
2017-04	57	37	11	89	159	59	412
2017-05	56	37	11	89	159	59	411
2017-06	56	36	11	89	159	59	410
2017-07	56	36	11	85	159	59	406
2017-08	56	36	11	85	159	59	406
2017-09	56	36	11	85	159	59	406
2017-10	56	36	11	80	157	59	399
2017-11	48	36	11	72	156	59	382
2017-12	46	36	11	72	154	60	379
2018-01	46	36	12	72	154	60	380
2018-02	46	36	11	72	154	60	379
2018-03	46	35	12	72	154	60	379
2018-04	46	35	12	72	154	62	381
2018-05	46	35	12	72	154	62	381
2018-06	46	34	12	72	155	62	381
2018-07	46	34	12	72	156	62	382
2018-08	46	34	12	72	157	62	383
2018-09	47	34	12	72	156	62	383
2018-10	46	34	14	70	155	62	381
2018-11	46	33	14	70	154	62	379
2018-12	45	33	14	67	151	60	370
2019-01	45	33	14	67	151	59	369
2019-02	46	33	14	67	151	59	370
2019-03	46	33	14	67	151	59	370
2019-04	46	34	14	67	150	59	370
2019-05	47	33	14	67	150	59	370
2019-06	47	33	14	67	150	59	370
2019-07	47	33	14	67	150	59	370
2019-08	47	33	14	67	150	59	370
2019-09	47	33	14	67	149	59	369
2019-10	47	33	14	67	152	59	372
2019-11	47	33	14	66	148	57	365
2019-12	48	33	14	66	148	57	366
2020-01	50	32	14	66	148	57	367
2020-02	50	32	14	66	148	57	367
2020-03	50	30	14	66	146	56	362
2020-04	50	30	14	66	145	56	361
2020-05	50	29	14	66	145	56	360
2020-06	50	29	14	66	144	56	359
2020-07	50	29	14	66	144	56	359
2020-08	48	29	14	66	144	56	357
2020-09	46	28	14	65	144	55	352
2020-10	46	28	14	64	144	55	351
2020-11	46	28	14	63	143	54	348

Table A2: Money Market Fund Net Assets (\$ Billions)

Month	Prime Institutional	Prime Retail	Tax Exempt Institutional	Tax Exempt Retail	Government	Treasury	Total
2016-11	315.5	250.4	10.0	125.4	1,627.6	646.2	2,975.1
2016-12	299.3	251.1	8.5	126.0	1,622.2	651.2	2,958.3
2017-01	313.0	249.1	10.1	125.3	1,587.7	632.1	2,917.3
2017-02	337.1	249.9	9.3	125.5	1,583.7	625.9	2,931.4
2017-03	345.6	253.5	10.2	125.1	1,565.1	630.0	2,929.5
2017-04	359.0	249.9	10.3	122.6	1,552.3	622.9	2,917.0
2017-05	362.3	249.0	10.4	123.4	1,542.7	632.8	2,920.6
2017-06	365.4	250.0	10.3	122.8	1,522.2	626.5	2,897.2
2017-07	373.6	251.3	11.1	124.3	1,518.8	638.0	2,917.1
2017-08	385.1	256.6	10.5	122.5	1,553.2	660.4	2,988.3
2017-09	404.6	259.9	10.4	121.6	1,574.3	663.7	3,034.5
2017-10	404.4	261.1	10.8	121.9	1,570.5	656.3	3,025.0
2017-11	415.8	264.0	9.8	123.1	1,594.6	672.9	3,080.2
2017-12	398.9	267.3	8.5	126.0	1,623.8	701.1	3,125.6
2018-01	409.1	260.2	11.0	130.6	1,576.6	693.6	3,081.1
2018-02	405.1	261.5	11.0	129.2	1,611.1	704.0	3,121.9
2018-03	403.2	259.9	10.6	126.5	1,579.3	694.1	3,073.6
2018-04	426.6	258.7	11.2	124.7	1,600.2	683.2	3,104.6
2018-05	424.7	261.4	11.5	131.3	1,634.1	687.4	3,150.4
2018-06	407.4	269.7	11.3	127.8	1,586.8	695.4	3,098.4
2018-07	418.8	282.6	11.5	123.0	1,586.5	691.2	3,113.6
2018-08	435.0	297.6	11.7	123.4	1,581.3	694.6	3,143.6
2018-09	442.8	303.6	12.1	123.1	1,572.2	701.9	3,155.7
2018-10	433.8	309.5	12.0	126.1	1,578.5	703.9	3,163.8
2018-11	449.3	322.4	12.6	130.6	1,602.3	735.9	3,253.1
2018-12	421.0	343.2	12.4	137.2	1,634.0	750.0	3,297.8
2019-01	458.0	356.9	14.6	131.2	1,636.2	732.3	3,329.2
2019-02	501.9	371.0	15.0	128.7	1,659.3	730.3	3,406.2
2019-03	591.4	380.7	15.7	129.3	1,637.9	739.0	3,494.0
2019-04	616.8	383.2	13.8	124.8	1,629.0	727.2	3,494.8
2019-05	616.1	392.7	13.6	127.1	1,671.2	752.2	3,572.9
2019-06	616.4	402.0	14.6	126.5	1,689.4	765.8	3,614.7
2019-07	626.6	414.1	15.0	125.9	1,723.4	785.3	3,690.3
2019-08	630.0	421.4	15.8	125.0	1,776.1	798.4	3,766.7
2019-09	631.3	431.8	14.8	124.3	1,818.4	829.0	3,849.6
2019-10	656.0	445.5	15.4	127.2	1,858.5	835.5	3,938.1
2019-11	666.1	455.5	16.6	127.2	1,868.2	850.0	3,983.6
2019-12	634.5	460.6	15.2	127.6	1,913.1	869.9	4,020.9
2020-01	655.1	468.1	16.0	125.8	1,891.8	859.8	4,016.6
2020-02	635.6	473.7	15.7	125.3	1,930.1	853.5	4,033.9
2020-03	558.9	425.9	15.3	116.7	2,425.2	1,196.7	4,738.7
2020-04	651.2	438.8	17.5	123.6	2,651.7	1,317.4	5,200.2
2020-05	686.8	453.8	19.6	120.6	2,655.8	1,294.9	5,231.5
2020-06	706.9	455.0	19.2	117.4	2,561.4	1,244.0	5,103.9
2020-07	701.6	443.9	18.5	110.7	2,522.6	1,240.3	5,037.6
2020-08	704.7	433.7	20.0	108.6	2,507.7	1,205.9	4,980.6
2020-09	691.2	301.6	17.1	104.0	2,593.9	1,155.0	4,862.8
2020-10	667.0	295.0	17.8	101.8	2,568.7	1,138.8	4,789.1
2020-11	669.4	286.8	17.6	98.8	2,585.8	1,149.4	4,807.8

Table A3: Asset-Weighted Seven-Day Gross Yield (Percent)

Month	Prime Institutional	Prime Retail	Tax Exempt Institutional	Tax Exempt Retail	Government	Treasury
2016-11	0.63	0.81	0.59	0.62	0.44	0.42
2016-12	0.79	0.93	0.76	0.77	0.58	0.53
2017-01	0.84	0.98	0.69	0.72	0.61	0.56
2017-02	0.84	0.99	0.67	0.71	0.62	0.58
2017-03	0.98	1.08	0.86	0.87	0.76	0.74
2017-04	1.02	1.14	0.92	0.94	0.80	0.78
2017-05	1.03	1.15	0.81	0.84	0.85	0.84
2017-06	1.20	1.26	0.91	0.93	1.01	1.00
2017-07	1.24	1.30	0.84	0.89	1.05	1.07
2017-08	1.25	1.31	0.83	0.86	1.07	1.05
2017-09	1.25	1.31	0.94	0.96	1.08	1.07
2017-10	1.26	1.33	0.95	0.97	1.10	1.10
2017-11	1.29	1.36	0.98	1.00	1.14	1.15
2017-12	1.48	1.56	1.61	1.59	1.33	1.32
2018-01	1.55	1.61	1.14	1.18	1.38	1.37
2018-02	1.60	1.68	1.14	1.16	1.44	1.47
2018-03	1.83	1.89	1.48	1.46	1.69	1.69
2018-04	1.92	2.01	1.72	1.71	1.75	1.74
2018-05	1.97	2.08	1.16	1.24	1.80	1.80
2018-06	2.11	2.21	1.53	1.53	1.95	1.92
2018-07	2.14	2.22	1.08	1.10	1.97	1.95
2018-08	2.15	2.24	1.57	1.59	2.01	2.01
2018-09	2.23	2.30	1.59	1.59	2.11	2.12
2018-10	2.35	2.39	1.64	1.66	2.22	2.23
2018-11	2.39	2.48	1.74	1.74	2.28	2.29
2018-12	2.58	2.62	1.75	1.76	2.45	2.44
2019-01	2.61	2.67	1.41	1.45	2.45	2.44
2019-02	2.62	2.66	1.76	1.78	2.47	2.45
2019-03	2.59	2.65	1.53	1.59	2.49	2.49
2019-04	2.58	2.63	2.23	2.20	2.49	2.48
2019-05	2.54	2.58	1.58	1.52	2.45	2.43
2019-06	2.50	2.55	1.88	1.88	2.43	2.37
2019-07	2.44	2.47	1.47	1.48	2.39	2.30
2019-08	2.26	2.30	1.42	1.42	2.18	2.14
2019-09	2.13	2.18	1.58	1.56	2.03	2.03
2019-10	1.99	2.06	1.22	1.26	1.89	1.86
2019-11	1.83	1.91	1.14	1.17	1.71	1.71
2019-12	1.80	1.88	1.58	1.54	1.67	1.66
2020-01	1.83	1.83	0.97	1.00	1.64	1.63
2020-02	1.73	1.79	1.17	1.20	1.64	1.63
2020-03	0.94	1.15	3.36	3.35	0.55	0.57
2020-04	0.59	0.85	0.30	0.51	0.39	0.37
2020-05	0.40	0.53	0.21	0.42	0.29	0.28
2020-06	0.33	0.42	0.21	0.33	0.26	0.26
2020-07	0.27	0.31	0.23	0.33	0.23	0.24
2020-08	0.22	0.25	0.12	0.22	0.19	0.20
2020-09	0.20	0.24	0.17	0.23	0.17	0.17
2020-10	0.17	0.21	0.16	0.22	0.16	0.16
2020-11	0.16	0.20	0.15	0.20	0.14	0.14

Table A4: Asset-Weighted Seven-Day Net Yield (Percent)

Month	Prime Institutional	Prime Retail	Tax Exempt Institutional	Tax Exempt Retail	Government	Treasury
2016-11	0.56	0.43	0.49	0.24	0.21	0.20
2016-12	0.71	0.54	0.65	0.37	0.32	0.29
2017-01	0.76	0.58	0.58	0.33	0.35	0.32
2017-02	0.76	0.60	0.56	0.31	0.35	0.33
2017-03	0.91	0.69	0.76	0.49	0.51	0.49
2017-04	0.95	0.76	0.82	0.55	0.53	0.53
2017-05	0.96	0.77	0.70	0.46	0.57	0.59
2017-06	1.13	0.88	0.80	0.56	0.73	0.75
2017-07	1.16	0.93	0.73	0.52	0.77	0.82
2017-08	1.17	0.94	0.71	0.49	0.79	0.81
2017-09	1.17	0.94	0.83	0.58	0.81	0.82
2017-10	1.18	0.97	0.82	0.62	0.82	0.85
2017-11	1.21	1.01	0.87	0.66	0.86	0.91
2017-12	1.40	1.20	1.45	1.23	1.05	1.08
2018-01	1.46	1.27	1.01	0.85	1.10	1.13
2018-02	1.51	1.34	1.01	0.82	1.15	1.23
2018-03	1.75	1.57	1.35	1.12	1.40	1.45
2018-04	1.85	1.70	1.58	1.39	1.46	1.50
2018-05	1.89	1.78	1.03	0.93	1.52	1.56
2018-06	2.03	1.91	1.39	1.22	1.67	1.69
2018-07	2.05	1.93	0.94	0.79	1.69	1.72
2018-08	2.06	1.95	1.44	1.28	1.72	1.78
2018-09	2.14	2.02	1.45	1.28	1.83	1.89
2018-10	2.25	2.12	1.51	1.36	1.94	2.00
2018-11	2.30	2.20	1.62	1.44	1.99	2.05
2018-12	2.49	2.35	1.63	1.46	2.16	2.21
2019-01	2.52	2.40	1.29	1.16	2.17	2.21
2019-02	2.52	2.39	1.63	1.49	2.18	2.23
2019-03	2.52	2.39	1.41	1.31	2.21	2.26
2019-04	2.50	2.37	2.10	1.92	2.21	2.25
2019-05	2.46	2.32	1.45	1.24	2.17	2.21
2019-06	2.42	2.28	1.75	1.60	2.15	2.15
2019-07	2.36	2.21	1.34	1.21	2.10	2.07
2019-08	2.18	2.05	1.30	1.14	1.91	1.91
2019-09	2.05	1.92	1.45	1.28	1.76	1.80
2019-10	1.90	1.80	1.10	0.98	1.62	1.64
2019-11	1.75	1.65	1.01	0.90	1.44	1.48
2019-12	1.72	1.64	1.44	1.26	1.40	1.43
2020-01	1.74	1.58	0.84	0.73	1.38	1.41
2020-02	1.65	1.54	1.05	0.93	1.38	1.40
2020-03	0.87	0.89	3.21	3.07	0.32	0.35
2020-04	0.53	0.58	0.16	0.25	0.17	0.17
2020-05	0.33	0.28	0.08	0.16	0.09	0.09
2020-06	0.26	0.19	0.09	0.10	0.07	0.07
2020-07	0.19	0.09	0.11	0.10	0.06	0.06
2020-08	0.15	0.06	0.04	0.03	0.03	0.03
2020-09	0.13	0.04	0.07	0.04	0.02	0.01
2020-10	0.10	0.03	0.07	0.03	0.02	0.01
2020-11	0.10	0.03	0.07	0.02	0.02	0.01

Table A5: Weighted Average Life (Days)

Month	Prime Institutional	Prime Retail	Tax Exempt Institutional	Tax Exempt Retail	Government	Treasury
2016-11	55.0	71.5	15.6	28.1	93.8	96.8
2016-12	54.1	70.2	16.9	29.3	95.1	98.6
2017-01	53.8	68.6	15.2	27.9	94.6	100.1
2017-02	50.7	69.2	15.2	26.8	91.3	98.2
2017-03	53.4	68.1	14.3	24.5	88.7	95.5
2017-04	53.7	66.0	12.4	22.9	84.8	89.5
2017-05	52.8	70.8	10.9	20.3	82.0	87.1
2017-06	57.1	76.0	11.1	24.1	84.4	94.6
2017-07	57.7	76.1	10.0	24.7	86.1	89.6
2017-08	56.5	75.3	12.7	30.5	85.2	90.2
2017-09	55.3	72.1	14.1	29.4	84.0	90.6
2017-10	57.2	70.2	14.3	27.1	80.3	86.5
2017-11	58.2	74.3	14.6	28.1	86.2	82.8
2017-12	57.8	69.9	17.2	30.8	89.6	86.7
2018-01	56.7	65.8	13.3	27.1	91.4	88.9
2018-02	53.0	69.0	13.1	26.2	90.4	89.3
2018-03	55.2	72.5	13.4	26.6	90.2	93.3
2018-04	51.3	65.7	10.4	24.0	86.3	90.8
2018-05	49.8	65.1	11.2	23.9	82.1	92.1
2018-06	53.0	66.6	10.5	25.1	84.9	94.0
2018-07	54.8	62.5	10.7	24.0	83.3	90.5
2018-08	57.1	64.2	9.8	25.6	84.2	93.5
2018-09	59.0	66.8	11.7	32.1	86.8	93.5
2018-10	56.0	65.0	13.3	32.6	87.8	91.9
2018-11	59.3	73.5	14.3	31.2	86.0	89.2
2018-12	58.1	62.9	13.9	29.2	87.2	90.9
2019-01	58.4	62.0	12.9	29.6	85.7	93.1
2019-02	59.0	64.0	14.0	27.9	88.2	92.4
2019-03	56.9	67.0	14.6	27.6	93.0	92.5
2019-04	56.4	62.5	12.9	25.1	90.9	92.8
2019-05	60.1	63.1	14.1	25.0	93.3	91.2
2019-06	58.2	62.8	14.1	32.5	95.5	91.1
2019-07	58.8	62.9	12.8	31.4	94.7	93.7
2019-08	61.5	66.9	14.0	37.2	97.0	97.0
2019-09	62.1	72.8	16.2	38.5	98.1	95.2
2019-10	65.7	76.7	19.5	41.7	97.7	98.7
2019-11	64.7	78.2	19.2	40.5	97.6	99.6
2019-12	62.1	70.2	18.8	36.6	96.1	97.7
2020-01	63.4	64.1	16.3	34.7	93.0	95.0
2020-02	64.4	63.0	15.7	33.8	91.9	97.4
2020-03	57.9	59.8	14.2	34.2	98.3	92.4
2020-04	58.0	60.6	13.4	31.2	100.1	96.4
2020-05	57.2	60.0	15.9	30.6	102.3	98.0
2020-06	57.6	62.0	17.7	32.9	102.9	97.1
2020-07	62.8	67.8	16.8	33.4	101.7	96.9
2020-08	59.2	66.5	15.5	35.6	99.7	97.1
2020-09	58.5	56.8	18.4	34.4	100.9	101.2
2020-10	60.4	59.3	18.2	32.3	101.1	97.8
2020-11	56.6	53.2	16.6	29.0	99.0	97.8

Table A6: Weighted Average Maturity (Days)

Month	Prime Institutional	Prime Retail	Tax Exempt Institutional	Tax Exempt Retail	Government	Treasury
2016-11	27.1	44.0	14.8	25.7	42.2	46.0
2016-12	24.4	39.6	15.9	27.1	45.0	47.0
2017-01	24.8	38.3	14.3	25.3	42.3	46.6
2017-02	22.9	37.9	14.5	23.8	40.0	43.1
2017-03	23.0	33.4	13.7	21.9	38.1	40.2
2017-04	24.8	33.6	11.7	20.2	34.8	36.3
2017-05	22.3	38.2	10.5	17.3	31.2	33.3
2017-06	23.8	40.2	10.4	21.3	32.0	37.7
2017-07	25.7	39.3	9.4	21.8	31.2	34.8
2017-08	25.7	37.8	12.1	27.4	29.7	35.8
2017-09	23.7	34.0	13.4	26.8	30.3	36.5
2017-10	22.3	33.8	13.6	24.5	28.8	33.1
2017-11	23.3	35.3	14.1	25.7	30.1	31.3
2017-12	25.0	35.7	16.5	28.7	31.8	34.9
2018-01	24.0	31.6	12.8	24.9	29.5	34.6
2018-02	23.0	31.8	12.7	24.0	28.9	36.9
2018-03	26.4	35.2	12.8	24.5	32.2	37.1
2018-04	24.5	30.9	9.8	21.0	28.5	34.6
2018-05	22.2	32.3	10.9	21.2	27.0	34.0
2018-06	25.4	34.5	10.2	22.1	29.3	36.1
2018-07	27.6	33.5	9.8	20.2	27.6	31.8
2018-08	27.9	36.1	9.2	22.3	28.6	32.5
2018-09	28.0	34.3	11.4	28.8	33.3	33.6
2018-10	25.7	29.9	12.9	30.0	32.2	32.2
2018-11	27.7	35.4	14.1	29.0	31.0	29.6
2018-12	25.8	32.3	13.5	27.2	30.3	31.4
2019-01	27.6	34.1	12.5	27.5	27.0	32.5
2019-02	29.0	34.8	13.5	25.4	26.8	31.6
2019-03	33.3	39.4	14.2	25.3	29.7	32.4
2019-04	32.9	34.2	12.6	22.7	28.0	31.8
2019-05	33.6	32.7	13.8	22.6	27.6	32.5
2019-06	32.4	32.9	13.7	30.6	27.6	31.7
2019-07	32.2	32.9	12.4	28.9	26.8	33.4
2019-08	32.6	36.7	13.8	34.7	27.6	36.1
2019-09	31.0	40.7	15.9	35.9	29.8	36.9
2019-10	34.1	43.5	19.1	39.2	31.8	40.9
2019-11	33.8	43.7	19.0	38.1	34.4	44.1
2019-12	30.4	36.5	18.5	34.6	35.5	42.6
2020-01	30.6	32.3	15.9	32.4	30.1	38.1
2020-02	31.1	33.3	15.1	31.5	29.4	38.2
2020-03	31.3	34.5	13.9	31.8	34.4	41.6
2020-04	40.8	42.6	12.9	28.9	36.0	46.3
2020-05	43.2	47.6	15.4	28.4	40.3	47.1
2020-06	40.4	46.1	17.2	30.7	41.3	45.8
2020-07	42.6	48.3	16.0	31.2	41.2	46.0
2020-08	40.0	47.7	14.9	33.8	39.9	46.7
2020-09	40.1	49.2	17.6	32.9	43.0	48.4
2020-10	41.7	51.1	17.7	30.9	44.4	46.9
2020-11	39.4	45.5	15.8	27.5	43.5	48.0

**Table A7: Ratio of Daily Liquid Assets to Total Assets
(Percent)**

Month	Prime Institutional	Prime Retail	Government	Treasury
2016-11	37.8	25.9	46.4	93.1
2016-12	41.0	30.3	49.3	94.4
2017-01	38.5	28.4	43.6	93.5
2017-02	37.8	25.8	44.2	93.0
2017-03	41.4	28.6	47.3	94.5
2017-04	33.7	23.2	44.0	89.7
2017-05	39.7	27.8	45.1	91.1
2017-06	41.9	27.9	44.8	93.2
2017-07	36.6	26.6	41.2	91.4
2017-08	35.7	26.5	42.4	90.2
2017-09	40.1	29.2	42.4	91.8
2017-10	37.9	27.1	43.8	90.7
2017-11	37.7	25.0	42.6	91.2
2017-12	38.5	29.8	45.9	93.4
2018-01	31.7	22.4	40.9	91.4
2018-02	33.9	26.1	44.3	91.1
2018-03	35.1	26.7	47.0	92.4
2018-04	37.2	25.2	46.3	91.6
2018-05	34.9	20.8	46.8	91.0
2018-06	36.7	21.2	44.8	91.0
2018-07	36.4	23.9	44.5	90.8
2018-08	40.1	27.8	47.1	92.3
2018-09	37.0	23.1	46.8	91.7
2018-10	39.3	22.4	46.7	92.1
2018-11	37.8	25.7	46.2	91.6
2018-12	37.9	30.6	48.7	93.5
2019-01	40.2	27.0	47.4	92.5
2019-02	40.0	27.5	46.8	92.0
2019-03	41.2	27.6	43.9	92.2
2019-04	39.9	26.0	42.9	91.5
2019-05	37.6	23.6	42.3	90.7
2019-06	37.8	21.5	43.1	90.2
2019-07	38.4	22.2	45.1	90.3
2019-08	39.3	24.7	47.6	91.0
2019-09	37.6	25.5	46.6	91.3
2019-10	37.7	25.1	47.0	91.9
2019-11	35.4	23.9	45.5	90.7
2019-12	37.0	24.3	45.6	91.6
2020-01	37.0	24.6	47.1	90.5
2020-02	37.3	25.7	46.8	89.6
2020-03	42.5	33.9	46.9	94.3
2020-04	47.6	37.9	54.0	96.0
2020-05	50.0	42.1	58.3	95.6
2020-06	50.3	43.6	61.9	97.1
2020-07	49.6	41.7	61.8	96.5
2020-08	51.2	46.3	63.4	96.4
2020-09	53.1	42.0	64.5	95.9
2020-10	53.6	37.2	63.4	94.8
2020-11	55.1	39.3	65.9	95.3

**Table A8: Ratio of Weekly Liquid Assets to Total Assets
(Percent)**

Month	Prime Institutional	Prime Retail	Tax Exempt Institutional	Tax Exempt Retail	Government	Treasury
2016-11	57.5	43.6	90.4	79.0	68.8	98.5
2016-12	58.9	42.9	90.5	77.3	68.3	98.4
2017-01	56.0	43.0	91.3	76.5	67.3	98.5
2017-02	56.2	42.8	89.1	76.8	68.8	98.7
2017-03	56.1	43.3	88.2	79.2	68.6	99.0
2017-04	54.3	41.6	85.5	75.8	69.2	96.1
2017-05	54.7	42.7	90.0	80.2	69.7	98.3
2017-06	56.5	41.9	92.9	80.6	68.4	99.2
2017-07	55.7	41.3	90.3	79.5	67.5	98.9
2017-08	54.7	41.5	91.1	77.7	66.8	98.3
2017-09	56.0	45.2	83.6	66.0	67.7	98.2
2017-10	55.8	44.1	88.3	78.4	70.8	97.8
2017-11	55.4	44.0	89.5	79.3	69.8	99.0
2017-12	55.1	44.7	85.4	76.3	69.9	98.4
2018-01	53.6	44.4	87.4	78.0	70.5	98.0
2018-02	54.7	44.9	87.1	77.7	70.7	97.8
2018-03	54.0	41.6	84.3	74.3	69.7	97.7
2018-04	55.6	41.7	89.8	75.4	70.5	98.4
2018-05	54.8	41.2	88.7	76.7	71.3	98.5
2018-06	54.4	41.0	90.2	77.4	69.9	98.6
2018-07	55.1	41.9	85.4	78.3	70.9	98.0
2018-08	55.5	42.0	91.6	79.4	72.4	98.8
2018-09	54.3	42.7	86.4	76.2	70.4	98.3
2018-10	55.1	42.8	89.1	76.4	70.8	98.2
2018-11	54.0	40.1	88.9	77.4	71.8	99.0
2018-12	54.0	43.3	87.5	76.7	71.6	98.8
2019-01	54.6	41.6	89.5	74.4	70.6	98.2
2019-02	54.3	42.4	88.8	76.4	70.7	98.1
2019-03	55.8	41.2	87.5	75.5	69.3	98.2
2019-04	54.2	41.2	84.9	74.8	69.2	98.2
2019-05	52.6	41.5	87.2	76.2	69.3	98.5
2019-06	53.7	40.6	86.2	74.6	69.8	97.7
2019-07	53.1	40.6	86.0	76.1	69.8	97.9
2019-08	54.5	42.5	86.6	75.1	71.8	97.6
2019-09	53.8	41.8	84.8	74.3	71.9	98.2
2019-10	52.5	39.2	87.5	73.2	70.5	98.6
2019-11	52.0	38.9	86.5	72.1	69.3	97.5
2019-12	53.3	39.4	84.6	72.1	70.3	98.4
2020-01	53.1	40.6	86.9	73.1	72.0	98.0
2020-02	51.3	41.1	83.5	70.7	70.3	97.6
2020-03	55.2	45.3	85.5	70.8	68.0	99.0
2020-04	60.0	48.5	87.2	70.3	71.5	99.4
2020-05	62.2	50.5	87.5	71.0	73.8	98.8
2020-06	62.6	51.6	86.5	73.2	76.1	99.5
2020-07	61.0	51.4	87.4	73.0	77.8	99.5
2020-08	62.8	58.6	87.0	74.6	78.6	99.4
2020-09	65.6	51.0	88.1	74.7	79.1	99.3
2020-10	65.6	49.2	88.4	75.0	77.8	98.3
2020-11	67.0	50.4	90.3	76.6	79.1	99.0

Table A9: Prime Holdings of Bank-Related Securities by Country (\$ Billions)

Month	Canada	France	Japan	US	Germany	Netherlands	UK	Aust/NZ	Switzerland
2016-11	60.3	57.6	43.8	52.9	22.7	21.8	21.8	29.0	10.5
2016-12	70.6	41.6	44.8	58.6	19.9	12.3	13.6	34.5	11.3
2017-01	64.2	55.0	43.6	58.1	25.3	16.8	24.1	33.0	11.8
2017-02	66.5	62.0	44.9	54.0	26.5	16.4	20.5	35.3	12.0
2017-03	81.1	47.3	47.5	56.3	26.1	16.4	18.2	38.8	10.9
2017-04	68.8	59.4	48.3	61.2	25.0	19.9	25.9	39.1	14.8
2017-05	69.1	63.0	47.7	57.4	25.6	21.4	26.2	37.4	16.2
2017-06	80.4	45.2	49.4	59.5	18.8	16.2	23.1	38.2	15.5
2017-07	79.4	56.3	48.3	61.2	27.0	24.2	25.7	36.5	12.9
2017-08	76.9	64.7	48.5	61.6	28.4	31.5	26.0	38.7	14.7
2017-09	84.7	54.2	51.6	56.0	29.8	21.3	29.7	41.3	15.0
2017-10	78.5	63.3	50.1	61.0	28.2	34.7	31.3	40.9	16.7
2017-11	93.1	65.6	54.1	65.1	33.1	29.2	32.9	42.4	15.8
2017-12	101.9	39.1	51.9	67.4	24.5	14.5	30.5	47.1	16.4
2018-01	88.7	62.1	50.2	72.4	28.7	36.6	32.5	42.4	20.9
2018-02	89.3	63.5	55.2	63.8	27.2	33.1	35.5	39.2	24.0
2018-03	90.3	50.3	53.1	67.9	30.2	29.0	37.8	39.9	18.1
2018-04	84.9	61.3	57.7	66.2	31.3	28.1	38.8	36.7	30.5
2018-05	89.5	56.7	64.4	68.4	34.6	29.2	41.6	32.5	25.3
2018-06	91.8	48.0	59.6	66.4	32.6	19.0	31.9	35.7	17.8
2018-07	86.0	60.5	65.7	66.2	35.0	36.3	41.4	28.9	19.9
2018-08	90.4	59.7	66.4	71.8	34.3	32.1	44.6	30.6	19.0
2018-09	105.0	60.9	71.2	71.2	35.4	29.6	38.3	31.4	10.7
2018-10	98.5	78.2	69.0	77.4	40.3	26.9	46.2	33.8	20.4
2018-11	103.3	68.3	71.1	83.0	39.6	23.8	49.4	39.1	21.2
2018-12	123.3	53.8	83.0	92.4	23.1	15.6	35.4	40.2	23.9
2019-01	105.7	75.6	83.9	95.3	31.0	32.8	42.3	35.9	24.0
2019-02	112.4	79.8	89.0	94.8	31.4	25.0	44.5	36.0	29.5
2019-03	118.7	65.4	86.9	104.6	40.1	32.5	44.5	36.0	21.6
2019-04	124.3	86.1	99.7	117.8	41.3	31.6	40.3	33.8	28.4
2019-05	129.5	86.5	99.9	118.1	43.6	31.7	42.6	36.1	26.0
2019-06	147.8	72.1	96.8	121.7	42.9	28.8	48.7	38.2	21.9
2019-07	150.6	96.1	102.1	125.6	51.4	38.2	52.2	39.9	26.1
2019-08	144.8	90.5	104.3	126.5	53.5	35.3	45.8	43.5	24.2
2019-09	158.4	75.2	105.1	132.8	56.0	37.4	38.8	44.7	21.4
2019-10	148.6	85.0	113.4	124.6	52.8	47.2	54.5	50.0	23.1
2019-11	160.3	93.3	111.6	108.2	51.3	42.6	49.3	52.0	31.2
2019-12	168.8	76.7	117.3	106.9	35.8	34.0	35.8	54.6	28.1
2020-01	149.6	108.2	115.7	119.1	54.5	42.8	44.7	54.8	32.9
2020-02	164.1	101.1	107.3	113.1	56.1	44.6	50.1	46.5	26.6
2020-03	139.3	71.1	87.0	80.0	43.7	36.4	40.6	41.2	20.0
2020-04	132.5	88.4	97.2	87.7	40.3	37.2	45.6	32.8	20.1
2020-05	135.6	93.8	89.7	78.9	41.5	37.0	45.6	31.1	18.9
2020-06	140.8	84.8	95.8	79.7	35.8	30.2	45.3	26.6	18.9
2020-07	121.9	87.5	98.7	72.9	45.4	33.9	43.3	22.6	17.3
2020-08	119.0	86.0	94.9	72.0	45.4	31.0	42.4	21.7	18.3
2020-09	102.0	75.6	90.8	71.9	34.4	37.2	43.1	19.6	18.5
2020-10	93.7	82.3	86.3	63.9	38.9	30.0	35.2	18.6	21.8
2020-11	107.3	87.5	81.8	71.3	36.7	32.0	30.0	22.4	18.2

Table A10: Prime Holdings of Bank-Related Securities by Region (\$ Billions)

Month	Americas	Eurozone	Asia-Pacific	Europe (non-Euro)
2016-11	113.8	108.0	80.6	81.3
2016-12	129.8	78.4	88.8	53.8
2017-01	122.9	107.5	86.2	84.3
2017-02	121.3	115.9	90.3	88.2
2017-03	138.4	95.2	97.1	91.0
2017-04	130.6	117.1	98.5	99.1
2017-05	127.1	122.7	95.3	99.4
2017-06	140.4	86.6	102.0	92.0
2017-07	141.1	120.2	98.4	90.4
2017-08	139.2	137.3	100.5	98.6
2017-09	141.2	112.3	107.7	107.4
2017-10	140.1	141.1	103.3	106.4
2017-11	158.8	141.6	109.9	101.8
2017-12	170.1	86.7	114.2	85.4
2018-01	161.7	140.6	104.4	104.2
2018-02	153.7	135.4	107.3	111.0
2018-03	158.8	115.3	106.8	98.3
2018-04	151.6	130.6	108.5	124.3
2018-05	158.6	127.9	109.8	115.5
2018-06	158.8	106.8	110.0	107.2
2018-07	152.8	140.1	110.0	115.7
2018-08	162.9	135.0	111.8	117.8
2018-09	177.2	133.7	119.7	101.2
2018-10	176.6	158.0	118.5	118.9
2018-11	186.8	146.2	124.8	122.6
2018-12	216.5	103.4	138.1	99.3
2019-01	201.6	155.8	153.6	119.7
2019-02	207.7	151.1	139.5	139.0
2019-03	223.9	146.0	141.5	130.1
2019-04	242.7	168.8	152.9	124.5
2019-05	248.3	168.6	159.1	118.6
2019-06	270.2	152.0	161.3	125.5
2019-07	277.0	195.3	166.1	121.4
2019-08	272.0	189.7	172.3	119.4
2019-09	291.8	178.4	175.8	109.3
2019-10	273.7	197.1	189.9	129.8
2019-11	269.0	199.3	188.0	135.7
2019-12	276.0	156.3	196.4	105.2
2020-01	269.1	222.8	194.3	137.9
2020-02	277.7	218.9	174.1	133.6
2020-03	219.6	162.1	144.1	108.2
2020-04	220.8	179.5	144.0	111.9
2020-05	215.0	182.7	137.2	104.8
2020-06	221.2	156.9	141.6	105.2
2020-07	195.4	175.1	138.9	99.5
2020-08	191.7	171.0	130.7	105.1
2020-09	174.5	153.1	123.2	98.4
2020-10	158.1	159.5	117.1	90.7
2020-11	179.0	165.1	115.7	85.1

Table A11: Prime Money Market Fund Aggregate Product Exposures (\$ Billions)

Month	CDs and Time			Non-Financial Co.		Asset-Backed	Total
	Gov. and Treas.	Deposits	Financial Co. CP	CP and Other			
2016-11	125.2	211.1	86.1	112.7	32.6	567.7	
2016-12	138.1	191.5	78.7	104.5	32.5	545.3	
2017-01	105.9	232.3	86.9	104.0	31.3	560.4	
2017-02	109.1	244.0	94.7	104.0	31.9	583.7	
2017-03	122.9	245.7	100.7	93.2	31.5	594.0	
2017-04	105.5	259.2	103.0	101.8	34.3	603.8	
2017-05	120.1	257.7	103.1	94.6	34.9	610.4	
2017-06	154.7	231.7	101.6	83.5	38.0	609.5	
2017-07	136.5	255.8	103.9	88.5	37.7	622.4	
2017-08	117.6	271.3	118.8	92.3	41.2	641.2	
2017-09	150.2	263.1	115.3	93.9	38.1	660.6	
2017-10	137.3	279.1	119.3	95.2	38.9	669.8	
2017-11	132.1	283.6	126.7	95.7	40.2	678.3	
2017-12	162.5	229.6	125.7	98.8	41.4	658.0	
2018-01	120.8	265.8	141.6	97.7	42.0	667.9	
2018-02	123.7	256.6	143.6	104.0	40.2	668.1	
2018-03	161.9	222.9	132.0	99.0	39.9	655.7	
2018-04	163.5	242.6	142.4	97.6	38.0	684.1	
2018-05	161.9	227.3	146.7	104.6	41.7	682.2	
2018-06	158.9	230.1	143.2	95.3	41.9	669.4	
2018-07	156.4	244.0	153.1	109.1	44.4	707.0	
2018-08	189.3	240.4	150.5	104.4	45.8	730.4	
2018-09	186.7	246.2	153.7	109.6	47.5	743.7	
2018-10	172.4	262.8	156.7	107.4	46.8	746.1	
2018-11	190.3	263.0	156.4	106.6	51.9	768.2	
2018-12	212.8	245.8	149.1	99.9	55.2	762.8	
2019-01	216.2	289.4	160.7	99.4	58.3	824.0	
2019-02	244.6	298.0	167.8	109.3	59.1	878.8	
2019-03	313.3	282.8	186.9	130.1	58.0	971.1	
2019-04	310.3	298.7	192.1	140.9	59.5	1,001.5	
2019-05	301.0	302.6	197.0	145.4	62.0	1,008.0	
2019-06	281.6	321.8	205.1	147.7	62.7	1,018.9	
2019-07	290.7	320.3	216.6	149.0	63.9	1,040.5	
2019-08	310.1	333.0	213.5	140.2	63.8	1,060.6	
2019-09	326.3	316.0	226.7	142.0	63.5	1,074.5	
2019-10	322.1	332.7	236.4	150.0	62.9	1,104.1	
2019-11	314.8	346.1	236.5	158.0	64.0	1,119.4	
2019-12	359.3	307.9	214.0	146.7	62.3	1,090.2	
2020-01	311.0	369.1	226.9	153.9	60.3	1,121.2	
2020-02	308.4	360.8	209.9	162.9	64.4	1,106.4	
2020-03	303.6	281.8	190.3	152.1	53.6	981.4	
2020-04	420.0	290.0	180.4	149.4	55.7	1,095.5	
2020-05	489.3	275.5	171.6	157.7	62.1	1,156.2	
2020-06	534.0	252.7	174.0	149.0	62.6	1,172.3	
2020-07	513.4	257.3	163.8	156.3	59.4	1,150.2	
2020-08	542.5	249.0	157.8	144.1	56.2	1,149.6	
2020-09	455.2	212.1	143.4	134.9	53.4	999.0	
2020-10	419.2	215.9	141.2	135.0	48.8	960.1	
2020-11	410.9	220.7	150.0	134.7	46.7	963.0	

Table A12: Government & Treasury Funds Bank Repo Counterparties by Country (\$ Billions)

Month	US	Canada	France	UK	Germany	Japan	Other
2016-11	128.8	90.4	167.1	44.5	27.9	75.9	38.1
2016-12	104.2	92.4	77.7	26.1	10.2	66.7	16.4
2017-01	130.5	87.7	184.0	50.6	23.4	77.6	38.5
2017-02	131.6	97.7	187.1	47.2	22.6	81.0	29.3
2017-03	116.9	103.2	115.0	34.4	13.6	82.7	22.3
2017-04	137.3	107.5	193.5	62.1	19.4	94.7	39.7
2017-05	133.5	116.0	189.5	73.4	20.1	99.3	37.8
2017-06	114.1	113.3	125.4	63.5	15.2	97.7	28.1
2017-07	130.4	103.3	200.0	74.5	21.8	103.2	41.1
2017-08	137.8	113.7	219.8	75.5	17.6	112.4	50.1
2017-09	118.2	119.6	165.4	55.8	18.9	99.5	36.6
2017-10	127.6	115.1	242.0	81.7	21.2	106.1	51.1
2017-11	135.6	125.5	245.9	84.1	28.5	109.4	56.5
2017-12	127.8	148.8	111.7	76.2	26.7	115.1	28.4
2018-01	145.4	128.3	219.6	95.4	36.9	116.0	55.2
2018-02	143.1	124.8	222.2	101.8	24.8	121.0	54.4
2018-03	126.1	130.7	181.2	100.6	15.3	104.2	35.8
2018-04	156.3	118.5	236.5	108.9	17.1	120.7	45.3
2018-05	154.6	127.4	255.8	104.0	20.5	116.4	48.1
2018-06	153.8	144.2	193.3	86.1	10.8	126.2	33.7
2018-07	152.2	126.4	244.6	95.9	26.0	136.9	52.9
2018-08	143.5	124.6	230.8	104.7	23.2	139.5	50.5
2018-09	149.2	140.2	185.4	93.1	18.3	135.1	36.7
2018-10	142.8	122.6	223.5	97.2	24.3	136.6	50.1
2018-11	141.9	147.9	208.9	96.9	25.2	135.2	44.6
2018-12	172.2	165.8	133.1	89.4	15.3	135.1	38.1
2019-01	174.7	145.0	224.6	102.1	20.8	141.7	44.5
2019-02	174.5	154.9	218.9	98.8	19.7	134.5	44.4
2019-03	191.6	165.7	172.3	89.4	23.1	123.8	29.4
2019-04	194.5	140.4	217.5	99.9	18.2	134.7	41.8
2019-05	202.4	145.6	223.6	100.9	19.6	139.0	37.9
2019-06	209.5	164.0	180.0	98.3	18.7	130.7	32.2
2019-07	221.8	130.2	232.5	115.4	19.3	138.2	37.9
2019-08	218.1	162.5	239.3	116.5	20.9	144.0	35.8
2019-09	237.3	167.0	196.7	88.5	22.2	136.4	36.6
2019-10	183.1	146.4	235.7	73.4	20.3	149.5	41.0
2019-11	181.3	170.3	202.1	82.2	21.5	159.9	36.1
2019-12	165.6	196.2	125.6	75.4	11.8	138.6	33.9
2020-01	191.3	168.7	197.6	102.3	23.3	153.1	40.7
2020-02	210.7	166.5	213.7	121.2	24.5	151.7	41.6
2020-03	200.3	186.1	181.1	96.2	25.4	147.0	45.5
2020-04	201.4	153.9	217.1	117.5	31.4	159.8	42.9
2020-05	177.4	139.7	190.6	78.2	29.8	142.3	40.0
2020-06	172.1	131.4	146.1	67.6	22.4	118.5	36.5
2020-07	168.3	129.4	189.1	76.7	27.5	118.6	44.1
2020-08	179.8	134.4	197.2	78.4	21.0	132.0	44.8
2020-09	172.5	132.8	189.5	81.3	22.8	120.7	41.3
2020-10	190.8	126.4	204.4	73.1	20.5	117.8	44.1
2020-11	169.0	132.8	211.6	83.9	19.6	135.1	45.2

Table A13: Money Market Fund Repurchase Agreements with the Federal Reserve (\$ Billions)

Month	Total
2016-11	177.3
2016-12	403.4
2017-01	165.2
2017-02	194.0
2017-03	328.8
2017-04	174.3
2017-05	244.1
2017-06	365.1
2017-07	189.7
2017-08	204.1
2017-09	298.5
2017-10	164.4
2017-11	96.2
2017-12	288.1
2018-01	55.1
2018-02	30.9
2018-03	22.6
2018-04	13.7
2018-05	21.5
2018-06	88.8
2018-07	9.0
2018-08	0.4
2018-09	44.9
2018-10	4.8
2018-11	2.5
2018-12	39.6
2019-01	1.0
2019-02	3.4
2019-03	0.7
2019-04	-
2019-05	0.9
2019-06	43.6
2019-07	7.4
2019-08	12.1
2019-09	7.1
2019-10	2.8
2019-11	0.5
2019-12	47.4
2020-01	4.5
2020-02	2.2
2020-03	284.9
2020-04	1.8
2020-05	1.3
2020-06	1.0
2020-07	0.2
2020-08	-
2020-09	0.8
2020-10	-
2020-11	-

**Table A14: Securities with more than 179 Days to Maturity
(Percent)**

Month	Prime Institutional	Prime Retail	Tax Exempt Institutional	Tax Exempt Retail	Government	Treasury
2016-11	5.7	6.8	3.9	6.5	17.5	16.5
2016-12	6.8	6.9	3.4	6.0	18.2	18.0
2017-01	7.2	6.5	1.7	3.9	19.0	18.9
2017-02	6.9	7.1	1.9	3.4	18.0	17.2
2017-03	9.2	8.3	1.6	3.3	17.9	17.7
2017-04	8.6	7.7	1.5	2.9	16.7	17.8
2017-05	9.0	8.1	1.0	2.6	16.3	14.7
2017-06	9.2	8.3	1.2	3.6	16.5	15.8
2017-07	10.2	10.5	1.1	4.1	15.7	15.9
2017-08	9.1	11.5	1.5	5.6	15.0	13.3
2017-09	9.1	9.7	1.7	5.5	13.8	15.1
2017-10	10.1	9.1	1.8	5.3	13.7	15.2
2017-11	10.3	10.6	2.4	6.1	15.6	13.1
2017-12	8.7	8.3	3.1	5.8	15.9	13.7
2018-01	8.3	9.2	2.0	4.4	16.6	15.3
2018-02	7.2	10.1	2.0	4.1	16.2	12.8
2018-03	6.9	8.7	0.9	2.9	15.8	14.1
2018-04	6.4	7.9	0.6	2.8	15.0	14.3
2018-05	6.5	5.4	0.5	3.0	14.1	13.9
2018-06	7.4	7.8	0.4	3.4	15.3	15.1
2018-07	8.2	6.5	0.7	4.0	15.7	15.7
2018-08	9.2	6.0	0.6	4.7	15.5	15.0
2018-09	9.0	7.2	1.1	6.6	14.3	14.6
2018-10	8.1	8.0	2.0	7.2	15.2	15.9
2018-11	8.4	8.3	2.1	7.1	15.2	14.4
2018-12	7.9	6.2	1.9	5.0	15.5	15.3
2019-01	9.0	6.3	1.9	5.0	15.5	16.9
2019-02	8.1	7.7	1.9	4.8	15.3	14.5
2019-03	7.3	7.8	0.7	2.9	16.0	15.2
2019-04	8.2	7.6	0.8	2.8	16.6	17.7
2019-05	9.0	6.0	1.0	3.1	17.8	14.7
2019-06	8.6	6.8	0.9	5.3	18.0	16.1
2019-07	9.5	8.4	0.9	6.1	18.0	17.9
2019-08	9.8	9.9	1.5	7.9	17.9	15.5
2019-09	9.5	9.2	2.2	8.7	17.7	15.8
2019-10	11.0	11.3	3.4	10.0	18.8	17.6
2019-11	10.0	10.9	2.9	9.7	17.5	14.5
2019-12	9.8	10.8	2.4	7.0	17.7	17.3
2020-01	10.1	8.8	2.2	6.0	18.4	18.6
2020-02	10.3	7.7	2.3	5.9	18.1	17.2
2020-03	9.1	5.7	0.6	4.9	18.9	15.8
2020-04	6.9	4.8	0.9	4.1	17.6	14.9
2020-05	6.1	3.1	1.4	4.2	16.4	13.7
2020-06	6.9	5.1	2.4	5.9	16.1	14.5
2020-07	8.2	6.7	2.7	7.0	16.5	15.0
2020-08	7.3	6.3	2.6	7.2	15.9	13.8
2020-09	7.2	3.2	3.4	7.0	14.8	14.3
2020-10	7.8	4.3	3.1	6.0	14.3	14.9
2020-11	7.0	2.8	3.1	5.7	14.3	12.5

II Key Definitions

Included by reference are all definitions included in the definitions section of Form N-MFP and definitions set forth in Rule 2a-7 (17 CFR 270.2a-7).

<i>Bank-related securities</i>	For purposes of this report, includes certificates of deposit, time deposits, sponsored ABCP, and repurchase agreements where the bank is the counterparty.
<i>Daily liquid assets</i>	Means: (i) Cash; (ii) Direct obligations of the U.S. Government; (iii) Securities that will mature (as determined without reference to the exceptions in paragraph (i) of 29 CFR 270.2a-7 regarding interest rate readjustments), or are subject to a demand feature that is exercisable and payable, within one business day; or (iv) Amounts receivable and due unconditionally within one business day on pending sales of portfolio securities.
<i>Form N-MFP</i>	Used by Money Market Funds to file reports with the Commission pursuant to rule 30b1-7 under the Act (17 CFR 270.30b1-7). The form is available here .
<i>Fund Category</i>	A category on Item A.10 of Form N-MFP. Form N-MFP requests filers to identify each Fund from among the following categories: Treasury, Government Agency, Exempt Government, Prime, Single State and Other Tax Exempt, and further asks the filer to identify whether the Fund is an exempt Retail money market fund.
<i>Government money market fund</i>	A money market fund that invests 99.5 percent or more of its total assets in cash, government securities, and/or repurchase agreements that are collateralized fully.
<i>Institutional money market fund</i>	A Fund reported on Form N-MFP that is not identified as a Retail money market fund. Government and Treasury money market funds are not required to make this distinction.
<i>Money Market Fund (or Fund)</i>	A registered open-end management investment company, or series thereof, that is regulated as a money market fund pursuant to rule 2a-7 (17 CFR 270.2a-7) under the Investment Company Act of 1940.

<i>Prime money market fund</i>	Any Fund reported on Form N-MFP as a Prime money market fund. Prime money market funds generally hold a variety of taxable short-term obligations issued by corporations and banks, as well as repurchase agreements and assetbacked commercial paper. ² <i>Nonpublic prime institutional money market fund:</i> A Fund that disclosed in its public filings with the SEC (Form N-CEN, Form N-CSR, or the fund's prospectus) that its shares are not intended to be offered to the public. Prime institutional money market funds that do not provide such disclosures are considered to be offered to the public.
<i>Retail money market fund</i>	A money market fund that has policies and procedures reasonably designed to limit all beneficial owners of the fund to natural persons. Government and Treasury money market funds are not required to make this distinction.
<i>Tax exempt fund</i>	A money market fund that holds itself out as distributing income exempt from regular federal income tax.
<i>Treasury money market fund</i>	A government money market fund that limits its holdings to only U.S. Treasury obligations or repurchase agreements collateralized by U.S. Treasury securities. ³
<i>Weekly liquid assets</i>	Means: (i) Cash; (ii) Direct obligations of the U.S. Government; (iii) Government securities that are issued by a person controlled or supervised by and acting as an instrumentality of the government of the United States pursuant to authority granted by the Congress of the United States that: (A) Are issued at a discount to the principal amount to be repaid at maturity without provision for the payment of interest; and (B) Have a remaining maturity date of 60 days or less. (iv) Securities that will mature (as determined without reference to the exceptions in paragraph (i) of 29 CFR 270.2a-7 regarding interest rate readjustments), or are subject to a demand feature that is exercisable and payable, within five business days; or (v) Amounts receivable and due unconditionally within five business days on pending sales of portfolio securities.

²See Money Market Fund Reform; Amendments to Form PF, Investment Company Act Release No. 31166 (July 23, 2014), available [here](#).

³*Id.*